

KOBELCO®

SK295LC ACERA MARK 8



Operating Weight
66,800 lbs (30,300 kg)

Net Horsepower
197 hp @ 2,100 rpm
(147 kW @ 2,100 rpm)

Max Digging Depth
23' 8" (7.21 m)

Bucket Capacity
.875 to 1.875 cu yd
(.669 to 1.43 m³)

Bucket Breakout Force (SAE)
41,387 lbf (184 kN)

THE ADVANTAGE OF POWER, COMFORT AND CONTROL

The new **Kobelco SK295LC Acera Mark 8** hydraulic excavator delivers more horsepower, a superior ergonomically designed cab system, and ultra-smooth hydraulic control. This means maximum productivity for general excavation, road and bridge construction, and underground trenching operations. The SK295LC delivers a combination of leading breakout forces, fast cycle times and fine control for “finish quality” grading and leveling.

Powerfully Productive

The SK295LC leads the class in overall performance. Our proven Tier III **IVECO** by **FPT™*** engine and efficient & quiet hydraulics deliver:

- 70,732 lbf-ft (95.5 kN•m) of Swing Torque.
- 46,985 lbs. of bucket breakout force.
- 57,100 lbs. of drawbar pull force for climbing and pulling heavy loads.
- 34' 7" max. digging reach at ground level.

Proven IVECO Engine by FPT™*

- Reliable 410cu. in., 6-cylinder water-cooled, turbocharged engine from IVECO, one of the world's largest engine manufacturers.
- 673 lb-ft of engine torque (ISO14396).
- 197 (SAE) gross net engine horsepower (147kW) @ 2,100 rpm (ISO 14396).
- 10% more power with “no time limit” from our Power Boost™ system.
- 10% more power with “no time limit” from our Heavy Lift system.

Heavy-Duty by Design

- Longer, beefy X-frame offers enhanced stability and balance.
- Heavy-duty boom and arm are now standard.
- Rollers, sprockets and travel motors are sealed for long life.
- Robust lift cylinders ensure maximum rated capacity.
- Pumps, valves and piping are optimized for maximum efficiency.
- Flanged steel bucket bushings deliver long life.

Enhanced Operator Control

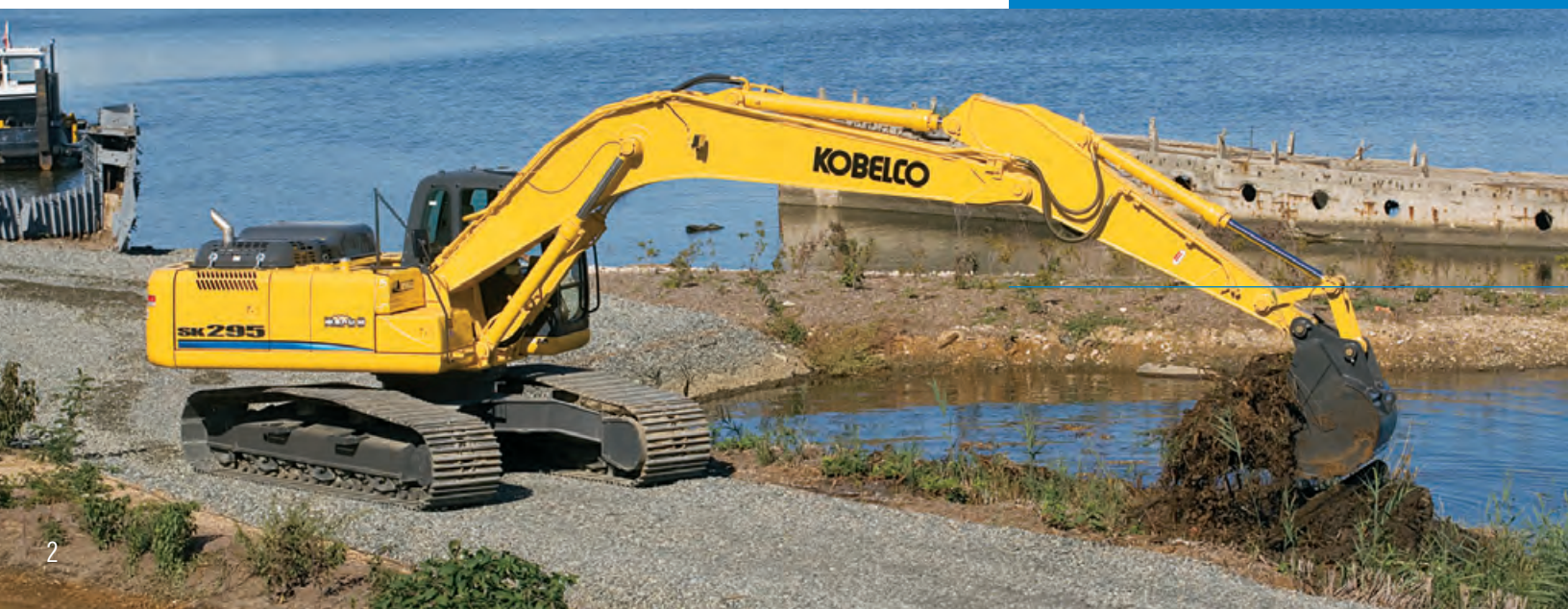
- **Intelligent Total Control System (ITCS)** recognizes your moves and assists by providing progressive power, where and when it is needed, so you stay in control.
- ITCS also provides the smooth, even movement required for fine grading and leveling.
- Auto-Accel smoothly increases engine rpms and hydraulic flow in direct proportion to the operator's movement of the control levers. This results in even, deliberate acceleration for precise applications.
- Auto-Decel reduces engine rpms after 4 seconds of operator inactivity, extending engine life and reducing fuel cost.

*FPT stands for Fiat Power Train technology and is a registered trademark of the Fiat Company.



Easy, ground-level servicing of filters, batteries and hydraulics reduces maintenance time to boost your productivity.

The SK295LC provides superior bucket and arm digging forces so you can easily handle the most demanding digging conditions.





Spacious dimensions and an unrivaled view make the Kobelco cab a comfortable and productive place to work.





The operator seat adjusts seven ways to maximize operator comfort.

Diagnostic system monitors vital functions and provides you with complete operating information.

SK295LC *Personalized Comfort*

UNPARALLELED VISIBILITY AND CONTROL

At Kobelco, we put you, the operator, first. We know you cannot perform at your best if you are not comfortable. That is why Kobelco has gone to the extremes to ensure that our cabs are the most comfortable in the industry. The SK295LC delivers complete operational control, maximum comfort, progressive hydraulic acceleration and a clear view of the job site. The best combination for the ultimate in comfort.

A Cab Designed Around You, the Operator

- Oversized cab provides ample room and numerous comfort features.
- Super-wide entry/exit area provides easy access to the roomy cab.
- 7-way adjustable seat lets you establish the level of comfort.
- Right-side located controls provide easy access to critical functions.
- Climate-controlled A/C & heating system for a constant working environment.
- AM/FM stereo with dual speakers is standard.
- 24 volt and 12 volt converter for charging cell phones and other accessories.
- Large storage area behind operator's seat.

Clear Job-Site Visibility

- Our cab provides clear visibility with minimal obstructions.
- Large glass panels provide an excellent view of the work station.
- Operator is positioned for maximum visibility of all functions and operations.
- Moveable front, top and side glass panels provide cross-flow ventilation.

Easy-to-Read Instruments

- New Monitor includes work mode selector switch, fuel and temperature gauges, and an orange backlit multi-display with large sun shade.
- Self-diagnostics with fault code memory makes it easy to monitor and adjust system pressures, engine speed, travel speed and other operating functions.
- Warning screens and audible alarms alert you to temperature and pressure status.
- Establish and review service interval reminders for engine oil, hydraulic oil, fuel and filters.

Personal Climate Control

- High efficiency/high output air conditioning & heating system.
- Programmable temperature for optimum and consistent comfort.
- Four fan speeds and LCD display let you monitor your environment.
- Redesigned vents efficiently circulate air around the operator's compartment for exceptional air flow.



Operators work with confidence, ease and with a clear view of the job site.



A personal climate control console includes an LCD display and controls for the high-output air conditioning and heating system and the four-speed fan. Just program a temperature between 61 and 91 degrees F (18 to 32 C) for optimum comfort any time of year.



SK295LC *Ultimate Performance*

POWERED FOR PERFORMANCE

The new SK295LC excavator is powered by an **IVECO by FPT™** power train that's certified to meet Tier III emissions requirements. This 6-cylinder, electronic injected diesel engine with intercooler turbocharger cranks out 197 gross horsepower and delivers 673 ft-lbs of torque. That is a significant increase in both horsepower and torque with improved fuel efficiency.

Power Mode Selection

The SK295LC provides four work modes:

- **H Mode:** Heavy-duty excavation work-gives priority to the workload at high speed (default mode).
- **S Mode:** Standard digging and loading work-provides fuel savings.
- **B Mode:** Breaker work (1-way hydraulic flow).
- **A Mode:** Demolition work with crusher/nibbler-breaker (2-way/2 pump flow).

Changing modes is fast and easily viewable on the orange, back-lit readout display

Auto Warm-up System

Kobelco's Acera Mark 8 series excavators feature a fully automatic engine and hydraulic warm-up system. This system warms up the hydraulic circuit to an optimum 126 degrees (F) and kicks in whenever ambient temperatures drop below 50 degrees (F). This feature improves system efficiency to make you more productive.

Smooth, Powerful Hydraulics

Kobelco performance features are unmatched by the competition.

- Power Boost™ provides approximately 10% more bucket breakout force - on command, *"without time limit"*.
- Heavy lift provides approximately 10% more lifting and swing capability - on command, *"without time limit"*.
- Independent travel circuit, exclusive to North American Kobelco products, provides dedicated flow for excavator travel.
- Swing priority dedicates power for trenching operations.
- Boom and arm holding valves minimize drift for accurate positioning.
- Standard high-flow valve can be switched between one-pump flow to two-pump flow from inside the cab.
- Hydraulic flow has been increased to improve overall performance.

Easy Ground Level Servicing

The SK295LC provides ground level access to:

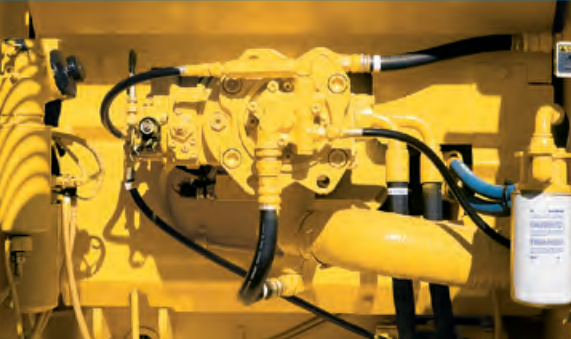
- Side-by-side radiator, oil cooler and intercooler.
- Hydraulic pump, tank, hoses and filters.
- Batteries, air filter, back-up alarm and other connections.
- Tool box for storage of tools, work boots, lunch box, etc.

Designed with Attachments in Mind

Kobelco doesn't just design excavators; we design excavators for use with attachments for the jobsite.

- High-capacity hydraulic system is adjustable from inside the cab.
- Standard one or two-way auxiliary valve makes it easy to install piping and controls for auxiliary hydraulics.
- Two auxiliary hydraulic modes permit switching between one-way and two-way flow without leaving the cab to manually switch a valve (with auxiliary hydraulics installed).
- An optional independent flow 'extra' circuit, with dedicated rotary gear pump, provides flow for multi-function attachments that include thumbs or twist buckets.

Feel the passion we've built into the new Kobelco SK295LC excavator. If you demand productivity, performance and fine control, see your nearest Kobelco dealer today, or use our dealer locator at www.kobelcoamerica.com to find the dealer nearest you.



The hydraulic feed to the main pumps is positioned to draw fluid from the side of the hydraulic tank - rather than the tank bottom like many competitors. The hydraulic system utilizes a high capacity, small particle filtration system to provide industry leading maintenance intervals.



Side-by-side radiator, oil cooler and intercooler can be accessed easily for inspection and cleaning. The side-by-side design allows the components to be removed independently. This means the radiator can be removed for service without draining the hydraulic system.



Flanged brass bucket bushings provide long life and extended maintenance intervals.



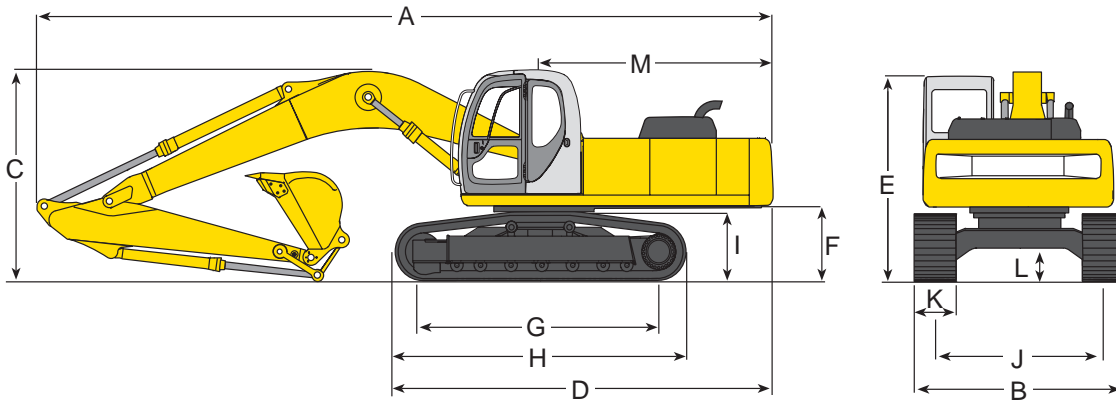
Dependable 410 cu. in. (6.72 L) 6-cylinder turbo-charged **IVECO** by **FPT™** engine puts out a maximum 673 ft-lbs (912 N•m) of torque.



The Power mode system provides four power modes to match your work operations. The monitor features a large sunshade and orange back-lit screen for easy viewing.



SK295LC DIMENSIONS, WEIGHTS & BUCKET SELECTION CHART



DIMENSIONS

ARM LENGTH	ft (m)	10' 2" (3.1m)
BOOM LENGTH		
A	Overall length	33' 8" (10.2)
B	Overall width (with 800 mm shoe)	11' 2" (3.39)
C	Overall height (to top of boom)	10' 6" (3.2)
D	Basic machine length	17' 6" (5.4)
E	Overall height (to top of cab)*	10' 5" (3.17)
F	Ground clearance of rear end*	3' 11" (1.2)
G	Center distance of tumbler	13' 2" (4.0)
H	Overall length of crawler	16' 0" (4.87)
I	Crawler height at tumbler center*	3' 5" (1.03)
J	Track gauge	8' 6" (2.59)
K	Width of crawler shoe	31.5" (800 mm)
L	Ground clearance of undercarriage*	1' 8" (500 mm)
M	Tail swing radius	9' 9" (2.97)

* Excludes height of grouser bar

WEIGHTS

SK295LC with 10'2" (3.10 m) std. HD arm, and bucket weighing 1,720 lbs (780 kg)

Bucket weight	lb (kg)	2,094 (950)
Shoe width	in (mm)	31.5 (800)
Machine overall width	ft-in (mm)	11' 2" (3,390)
Ground pressure	psi (kPa)	6.5 (45)
Operating weight w/o bucket	lb (kg)	64,706 (29,350)

HYDRAULIC SYSTEM

Pump		Tandem inline variable displacement	
Max discharge flow	US gal/min (l/min)	2x64.9	(2x246)
Operating pressure:			
Implement	psi (MPa)	4,970	(34.3)
Travel	psi (MPa)	4,970	(34.3)
Swing	psi (MPa)	4,210	(29.0)
Power Boost/Heavy lift	psi (MPa)	5,470	(37.7)
Pilot control circuit	psi (MPa)	730	(5.0)
Control valves (directional)		8-spool valves	

BUCKET SELECTION CHART

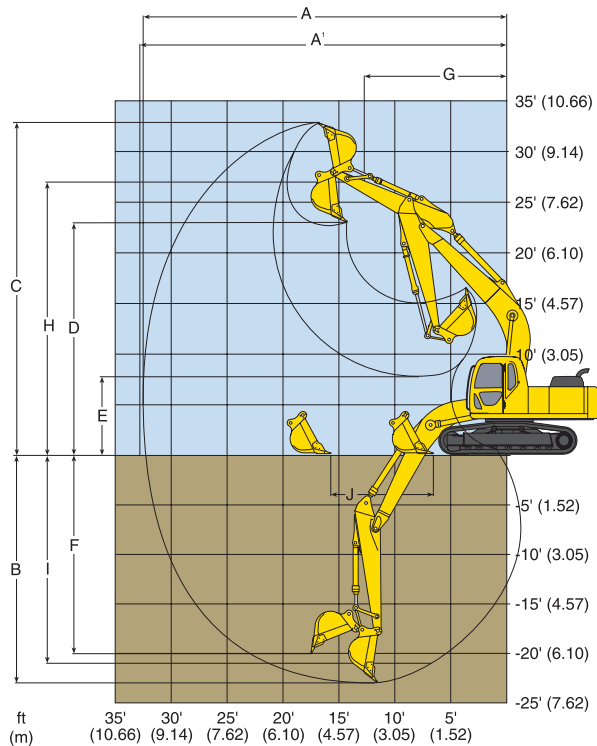
Bucket Duty	Capacity (SAE)		Width		Bucket		Arm ft-in (m)
	Cubic Yard (m3)		Inches (m)		Weight lb (kg)		10'2" (3.1)
General	.875	(.669)	24	(.609)	1,560	(708)	H
	1.125	(.860)	30	(.762)	1,710	(776)	H
	1.375	(1.051)	36	(.914)	1,860	(844)	H
	1.625	(1.242)	42	(1.066)	2,060	(934)	M
	1.875	(1.433)	48	(1.219)	2,175	(987)	L
Heavy Duty	.875	(.669)	24	(.609)	1,675	(760)	H
	1.125	(.860)	30	(.762)	1,840	(834)	H
	1.375	(1.051)	36	(.914)	2,000	(907)	M
	1.625	(1.242)	42	(1.066)	2,215	(1,004)	L
Severe Duty	.75	(.573)	27	(.685)	2,205	(1,000)	H
	1.00	(.764)	33	(.838)	2,450	(1,111)	M
	1.125	(.860)	36	(.914)	2,545	(1,154)	X

H - Used with material weight up to 3,000 lbs/cu yd (1,780 kg/m³)

M - Used with material weight up to 2,500 lbs/cu yd (1,483 kg/m³)

L - Used with material weight up to 2,000 lbs/cu yd (1,186 kg/m³)

X - Not recommended



This chart is a graphic representation of the working ranges for the SK295LC equipped with a 10' 2" (3.1 m) arm.

PERFORMANCE

Travel speed (Turtle/Rabbit)	2.2 mph (3.6 km/h) / 3.6 mph (5.8 km/h)
Swing speed	11 rpm
Gradeability	35 degrees (70%)
Drawbar pulling force	57,100 lbs (254 kN)

SPECIFICATION SUMMARY

GENERAL

Operating weight with bucket	lb (kg)	66,800	(30,300)
Bucket capacity range (SAE heaped)	cu yd (m ³)	.875 to 1.875	(.669 to 1.43)
Counterweight		14,690 lbs	(6,663 kg)

ENGINE

Make and Model	IVECO by FPT™	F4HE9684B*J1	
Type	Water-cooled, 6-Cylinder direct injection diesel engine with intercooler turbo-charger, electric common rail with EGR system		
Displacement	cu in (l)	410	(6.72)
Bore	in (mm)	4.09	(104)
Stroke	in (mm)	5.2	(132)
Fuel tank capacity	gal (l)	122	(460)
Electrical system		24 volts	(70 amp)
Horsepower SAE NET	hp (kW) @ rpm	197 @ 2,100	(147 @ 2,100)
Horsepower ISO 14396	hp (kW) @ rpm	204 @ 2,100	(152 @ 2,100)
Max torque - ISO 14396	lbf-ft (kN•m)	673 @ 1,400	(912 @ 1,400)

WORKING RANGES (Std. Arm)

Standard arm	ft-in (m)	10' 2"	(3.1)
Bucket digging force (SAE Net)	lb (kN)	41,387	(184)
Arm crowding force (SAE Net)	lb (kN)	30,060	(134)
Ground level reach (Max.)	ft-in (m)	34' 7"	(10.55)
Digging depth (Max.)	ft-in (m)	23' 8"	(7.22)
Dumping height (Min.)	ft-in (m)	8' 7"	(2.62)
Dumping height (Max.)	ft-in (m)	23' 9"	(7.23)
Vertical wall digging depth	ft-in (m)	20' 5"	(6.23)

WORKING RANGES

ATTACHMENTS – STANDARD	Standard	
	ft-in	(m)
A Max digging reach	33' 10"	(10.74)
A' Max digging reach at ground level	34' 7"	(10.55)
B Max digging depth	23' 8"	(7.22)
C Max digging height	33' 3"	(10.14)
D Max dumping clearance	23' 9"	(7.23)
E Min dumping clearance	8' 7"	(2.62)
F Max vertical wall digging depth	20' 5"	(6.23)
G Min front swing radius	13' 9"	(4.19)
H Height at min front swing radius	27' 0"	(8.23)
I Digging depth at 8' (2.4 m) level bottom	23' 9"	(7.23)
J Horiz digging stroke at ground level	16' 9"	(5.11)

Measurements shown are for machines equipped with the 1.57 cu. yd. (1.2 m³) bucket.

BREAKOUT FORCES

ARM	ft-in (m)	10' 2"	(3.1)
Arm crowding force (no PowerBoost)	SAE lbf (kN)	27,248	(121)
Arm crowding force (no PowerBoost)	ISO lbf (kN)	28,326	(126)
Arm crowding force (w/PowerBoost)	SAE lbf (kN)	30,060	(134)
Arm crowding force (w/PowerBoost)	ISO lbf* (kN*)	31,249	(139)
Bucket breakout force (no PowerBoost)	SAE lbf (kN)	37,625	(167)
Bucket breakout force (no PowerBoost)	ISO lbf (kN)	42,714	(190)
Bucket breakout force (w/PowerBoost)	SAE lbf (kN)	41,387	(184)
Bucket breakout force (w/PowerBoost)	ISO lbf* (kN*)	46,985	(209)

REFILL CAPACITIES

Fuel tank capacity	gal (l)	122	(460)
Hydraulic oil reservoir	gal (l)	45	(170)
Hydraulic system including oil reservoir	gal (l)	74	(280)
Cooling system	gal (l)	6.6	(25)
Lubrication: engine oil	gal (l)	4.8	(18.3)

HYDRAULIC SYSTEM

Hydraulic pump	No & type	2 VP + 1 FG	
Max discharge flow	US gal/min (L/min)	2 x 64.9 (2 x 246)	
Auxiliary pump output	US gal/min (L/min)	1 x 5.5 (1 x 21)	
Operating pressure:			
Implement	psi (MPa)	4,970	(34.3)
Travel	psi (MPa)	4,970	(34.3)
Swing	psi (MPa)	4,210	(29.0)
Power Boost/Heavy lift	psi (MPa)	5,470	(37.7)
Pilot control circuit	psi (MPa)	730	(5.0)

UNDERCARRIAGE

Track overall length	ft-in (m)	16' 0"	(4.87)
Track overall width w/std. shoe	ft-in (m)	11' 2"	(3.39)
Standard track shoe	in (mm)	31.5	(800)
Travel speed (Turtle)	mph (kmh)	2.2	(3.6)
Travel speed (Rabbit)	mph (kmh)	3.6	(5.8)
Drawbar pull	lb (kN)	57,100	(254)
Ground bearing pressure	psi (kPa)	6.5	(45)
Ground clearance	in (mm)	1' 8"	(500)

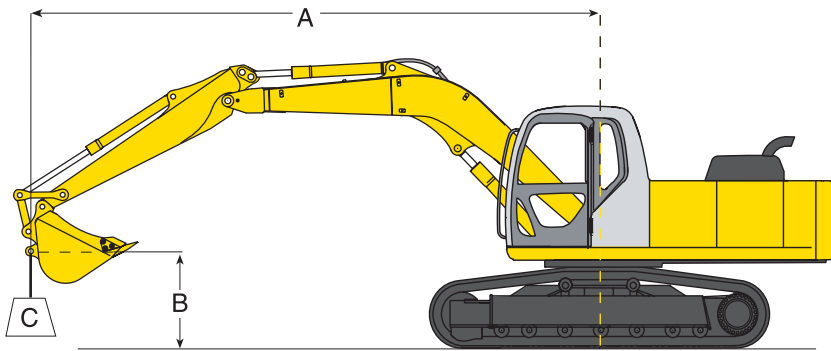
SWING SYSTEM

Max swing speed	rpm	11	
Swing torque	lbf-ft (kN • m)	70,732	(95.5)
Tail swing radius	ft-in (m)	9' 9"	(2.97)
Min front swing radius	ft-in (m)	13' 9"	(4.19)

SHIPPING DIMENSIONS

Height	ft-in (m)	10' 6"	(3.2)
Width w/std. shoe	ft-in (m)	11' 2"	(3.39)
Length	ft-in (m)	33' 8"	(10.27)

SK295LC LIFT CAPACITIES — 10' 2" Arm



- A** Reach swing centerline to bucket hook
- B** Bucket hook height above/below ground
- C** Lifting capacities in pounds and kilograms
 - Max discharge pressure: 5,480 psi (385 kg/cm²)
 - Track shoe: 31.5" (800 mm) Triple grouser
 - Boom: 20' 4" (6.2 m)
 - Bucket weight: 2,094 lbs. (950 kg)

LIFTING CAPACITY – 31.5" (800mm) triple grouser shoe

Based on machine equipped with – Arm: 10' 2" (3,100 mm) Bucket: SAE heaped 1.57 cu. yd. (1.23 m³) bucket.

A	LIFT POINT RADIUS										AT MAX. REACH			
	5' (1.5 m)		10' (3.0 m)		15' (4.6 m)		20' (6.1 m)		25' (7.6 m)		RADIUS			
B	C													
25' (7.6 m)	lb kg											6,241 2,831	*6,241 *2,831	24' 9" 7.55 m
20' (6.1 m)	lb kg									*10,950 *4,967	*10,950 *4,967	6,014 2,728	*6,014 *2,728	27' 9" (8.47 m)
15' (4.6 m)	lb kg						*12,853 *5,830	*12,853 *5,830	*11,934 *5,413	11,495 5,214	6,080 2,758	*6,080 *2,758	29' 8" (9.05 m)	
10' (3.0 m)	lb kg			*32,004 *14,517	*32,004 *14,517	*20,858 *9,461	*20,858 *9,461	*15,924 *7,223	15,607 7,079	*13,576 *6,158	10,860 4,926	6,429 2,916	*6,429 *2,916	30' 9" (9.36 m)
5' (1.5 m)	lb kg			*14,645 *6,647	*14,654 *6,647	*26,325 *11,941	22,181 10,061	*18,874 *8,561	14,489 6,572	*15,258 *6,921	10,258 4,653	7,055 3,200	*7,055 *3,200	30' 10" (9.40 m)
Ground Level	lb kg			*19,745 *8,956	*19,745 *8,956	*29,758 *13,498	20,926 9,492	*21,184 *9,609	13,691 6,210	*16,685 *7,568	9,793 4,442	8,100 3,674	7,247 3,287	30' 2" (9.19 m)
-5' (-1.5 m)	lb kg	*19,568 *8,876	*19,568 *8,876	*28,168 *12,777	*28,168 *12,777	*31,050 *14,084	20,496 9,297	*22,443 *10,180	13,298 6,032	16,585 7,523	9,553 4,333	9,877 4,480	7,796 3,536	28' 7" (8.72 m)
-10' (-3.0 m)	lb kg	*28,215 *12,798	*28,215 *12,798	*38,903 *17,646	*38,903 *17,646	*30,477 *13,824	20,620 9,353	*22,388 *10,155	13,296 6,031	16,651 7,553	9,612 4,360	13,261 6,015	9,072 4,115	26' 0" (7.94 m)
-15' (-4.6 m)	lb kg	*38,940 *17,663	*38,940 *17,663	*40,499 *18,370	*40,499 *18,370	*27,417 *12,436	21,290 9,657	*20,062 *9,100	13,781 6,251			*17,884 *8,112	12,264 5,563	21' 9" (6.63 m)
-20' (-6.1 m)	lb kg					*19,764 *8,965	*19,764 *8,965					*19,729 *8,949	19,729 8,949	15' 2" (4.61 m)



Rating over front

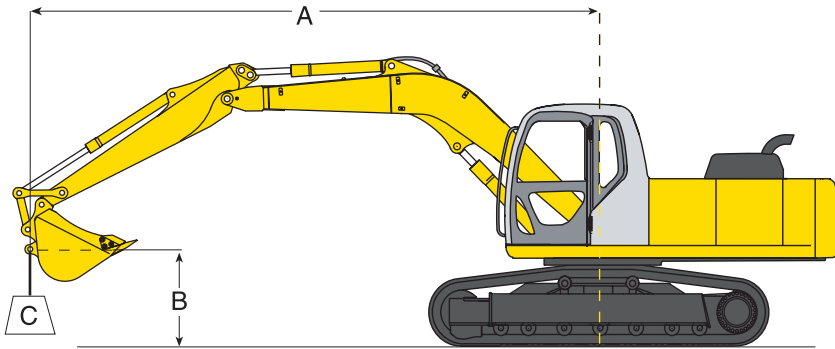


Rating over side / 360 degrees

Notes:

1. Do not attempt to lift or hold any load that exceeds these Rated values at their specified load radii and heights. Weight of all accessories must be deducted from the above lifting capacities.
2. Lifting capacities assume a machine standing on a level, firm, and uniform supporting surface. Operator must make allowance for job conditions such as soft or uneven ground, out of level conditions, side loads, sudden stopping of loads, hazardous conditions, inexperienced personnel, weight of various other buckets, lifting slings, attachments, etc.
3. Ratings at bucket lift hook.
4. The above rated loads are in compliance with SAE Hydraulic Excavator Lift Capacity Standard J 1097. They do not exceed 87% of hydraulic lifting capacity or 75% of tipping load. Rated loads marked with an asterisk (*) are limited by hydraulic capacity rather than tipping load.
5. Operator should be fully acquainted with the Operator's and Maintenance Manuals before operating this machine. Rules for safe operation of equipment should be followed at all times.
6. Capacities apply only to the machine as originally manufactured and normally equipped by KOBELCO Construction Machinery America LLC.

SK295LC LIFT CAPACITIES — 10' 2" Arm



- A** Reach swing centerline to bucket hook
- B** Bucket hook height above/below ground
- C** Lifting capacities in pounds and kilograms
 - Max discharge pressure: 5,480 psi (385 kg/cm²)
 - Track shoe: 31.5" (800 mm) Triple grouser
 - Boom: 20' 4" (6.2 m)
 - Bucket weight: 2,094 lbs. (950 kg)

LIFTING CAPACITY — 27.6" (700 mm) double grouser shoe

Based on machine equipped with - Arm: 10' 2" (3,100 mm) Bucket: SAE heaped 1.57 cu. yd. (1.23 m³) bucket

A	LIFT POINT RADIUS										AT MAX. REACH			
	5' (1.5 m)		10' (3.0 m)		15' (4.6 m)		20' (6.1 m)		25' (7.6 m)		RADIUS			
B	C		C		C		C		C					
25' (7.6 m)	lb										6,241	*6,241	24' 9"	
	kg										2,831	2,831	(7.55 m)	
20' (6.1 m)	lb								*10,950	*10,950	6,014	*6,014	27' 9"	
	kg								*4,967	*4,967	2,728	*2,728	(8.47 m)	
15' (4.6 m)	lb						*12,853	*12,853	*11,934	10,670	6,080	*6,080	29' 8"	
	kg						*5,830	*5,830	*5,413	4,840	2,758	*2,758	(9.15 m)	
10' (3.0 m)	lb		*32,004	*32,004	*20,858	*20,858	*15,924	14,520	*13,576	10,035	6,429	*6,429	30' 9"	
	kg		*14,517	*14,517	*9,461	*9,461	*7,223	6,586	*6,158	4,552	2,916	*2,916	(9.36 m)	
5' (1.5 m)	lb		*14,654	*14,654	*26,325	20,585	*18,874	13,400	*15,258	9,434	7,055	6,517	30' 10"	
	kg		*6,647	*6,647	*11,941	9,337	*8,561	6,078	*6,921	4,279	3,200	2,956	(9.40 m)	
Ground Level	lb		*19,745	*19,745	*29,758	19,330	*21,184	12,602	*16,685	8,968	8,100	6,590	30' 2"	
	kg		*8,956	*8,956	*13,498	8,768	*9,609	5,716	*7,568	4,068	3,674	2,989	(9.19 m)	
-5' (-1.5 m)	lb	*19,568	*19,568	*28,168	*28,168	*30,050	18,900	*22,443	12,209	*17,498	8,728	9,877	7,094	28' 7"
	kg	*8,876	*8,876	*12,777	*12,777	*14,084	8,573	*10,180	5,538	*7,937	3,959	4,480	3,218	(8.72 m)
-10' (-3.0 m)	lb	*28,215	*28,215	*38,903	*38,903	*30,477	19,024	*22,388	12,207	*17,207	8,788	13,261	8,289	26' 0"
	kg	*12,798	*12,798	*17,646	*17,646	*13,824	8,629	*10,155	5,537	*7,805	3,986	6,016	3,760	(7.94 m)
-15' (-4.6 m)	lb	*38,940	*38,940	*40,499	*40,499	*27,417	19,694	*20,062	12,692			*17,884	11,285	21' 9"
	kg	*17,663	*17,663	*18,370	*18,370	*12,436	8,933	*9,100	5,757			*8,112	5,119	(6.63 m)
-20' (-6.1 m)	lb					*19,764	*19,764					*19,729	19,729	15' 2"
	kg					*8,965	*8,965					*8,949	8,949	(4.61 m)



Rating over front



Rating over side / 360 degrees

Notes:

1. Do not attempt to lift or hold any load that exceeds these rated values at their specified load radii and heights. Weight of all accessories must be deducted from the above lifting capacities.
2. Lifting capacities assume a machine standing on a level, firm, and uniform supporting surface. Operator must make allowance for job conditions such as soft or uneven ground, out of level conditions, side loads, sudden stopping of loads, hazardous conditions, inexperienced personnel, weight of various other buckets, lifting slings, attachments, etc.
3. Ratings at bucket lift hook.
4. The above rated loads are in compliance with SAE Hydraulic Excavator Lift Capacity Standard J 1097. They do not exceed 87% of hydraulic lifting capacity or 75% of tipping load. Rated loads marked with an asterisk (*) are limited by hydraulic capacity rather than tipping load.
5. Operator should be fully acquainted with the Operator's and Maintenance Manuals before operating this machine. Rules for safe operation of equipment should be followed at all times.
6. Capacities apply only to the machine as originally manufactured and normally equipped by KOBELCO Construction Machinery America LLC.

SK295LC

ACERA
Mark 8



SK295LC STANDARD AND OPTIONAL EQUIPMENT

STANDARD EQUIPMENT

- AM/FM radio
- Arm, 10' 2" (3.1 m) with vertical ribbed rock guard, tapped blocks, breaker ready
- Audible warning system for high coolant temperature, low engine oil pressure, clogged air filter and oil replacement interval
- Auxiliary valve with flow control
- Automatic swing and travel parking brakes
- Automatic engine accel/decel feature
- Automatic engine & hydraulic warm up function
- Boom: 20' 4" (6.2 m)
- Boom and arm holding (anti-drift) valves
- Breaker valve with flow control
- Cab is die formed, modular steel full-vision, sound insulated, with viscous silicon-filled mounts, windshield wiper, heater and defroster, cigarette lighter, ashtray, floor mat, cab light, control lever lock, tinted skylight with damper cylinder
- Climate control air conditioning/heating system
- Counter weight 14,690 lbs (6,663kg)
- Display monitor mounted on multi-function console provides the status of following: aging of engine oil, fuel and hydraulic filters, system status, engine preheat, low engine oil pressure, engine coolant temperature, air cleaner restriction, battery charging, fuel level, CPU error and tachometer. Beneath the monitor are switches for auto-decel, windshield washer and wiper, mode selector, one/two pump auxiliary hydraulics and swing flashers
- Double pump flow for bucket
- Dual element air cleaner
- Electric horn
- Emergency electronic bypass
- Engine shuts down automatically if low oil pressure occurs
- Flanged brass bucket bushing
- Floor mat - removable, washable, replaceable
- Heavy duty batteries (2 x 12 volt 136 AH)
- Heavy Lift "without time limit"
- Hydraulic track adjusters
- Independent travel
- Lifetime lubricated track rollers, idlers and sprockets, grease cylinder track adjuster, track link disassembly mechanism, long pitch sealed and strutted track links.
- Long-life attachment bushings. Flanged bushing assembly at bucket pivot.
- **IVECO by FPT™** Engine, model F4HE9684B*J1
- Mode selection:
 - H Mode—Heavy-duty excavation work
 - S Mode—Standard digging and loading work
 - B Mode—Breaker work
 - A Mode—Demolition work with crusher/nibbler-breaker
- Heavy-Duty X-Frame undercarriage
- Power boost "without time limit"
- Power outlet, 24 volt to 12 volt converter
- Proportional auto accel system
- Removable cleanout screens for radiator & condensers
- Removable travel levers with toe tabs
- Nine (9) track rollers
- Self-lubricating bushings in boom foot and boom hoist cylinders
- Service diagnostics: Computer system displays 68 service items and 60 event fault code memory - accessible from cab
- Starting motor (24 v/5.0 KW) 70 amp alternator
- Straight travel system
- Storage compartment for manuals
- Suspension seat—7-way adjustable w/ safety belt
- Swing and travel automatic parking brakes
- Swing flashers recessed into counterweight. Off/on switch located on multi-function console in cab
- Swing priority (trenching system) functions automatically
- Swing shockless valve
- Tool box storage with side access
- Track shoes: 31.5" (800mm) semi-triple bar grouser
- Travel Alarm
- Travel—two speed with automatic shift
- Two lever control for boom, arm, bucket and swing; pilot operated wrist controls and foot pedals
- Warm up function of engine and hydraulic system, functions automatically
- Work lights—three front and two rear

OPTIONAL EQUIPMENT

- Arm: 10' 6" (3.2 m) with rock guard
- Arm: 13' 1" (4.0 m) with rock guard
- Belly pan guard
- Boom and arm load (lock) valves
- Breaker piping and controls
- Combined one-way or two way auxiliary hydraulic piping (one or two pump) with hand or foot controls
- Control pattern changer (ISO/BHL)
- Additional Counter weight 15,180 lbs (6,885 kg)
- Front rain visor
- Hydraulic oil for cold or tropical environments
- High & wide (heavy duty) lower
- Independent low-flow rotation system
- Large selection of ESCO & HENSLEY buckets
- Long reach 62' boom/arm with heavier counterweight
- Mass Excavator attachment
- One-way auxiliary hydraulics with piping and hand/foot controls (one pump)
- Single pedal travel
- Track shoe: 27.6" (700 mm) double bar grouser
- Vandalism guards

NOTE: Due to our policy of continual product improvement, all designs and specifications are subject to change without advance notice.

WORLD CLASS PRODUCTS DEMAND WORLD CLASS DEALERS

The purchase of a Kobelco excavator isn't the end, it's the beginning of our relationship together. Consider your local Kobelco dealer as your partner in productivity who will work with you to supply your business needs. Whether you need assistance in selecting the right model for your operation or developing an affordable leasing or financing plan through CNH Capital, your Kobelco dealer can offer you sound advice because he has decades of heavy equipment experience.

Downtime can happen at any time. And that's the best time to know you've got your Kobelco dealer's full service capabilities. He's the 'one stop shop' who is just down the street. Genuine Kobelco parts and all makes parts coverage, where and when you need them. Factory-trained service technicians, warranty experts and parts manager who are excavator experts. Fully equipped service vehicles which can bring responsive support to you quickly, to get you back up and running. Even customized professional maintenance programs, operator and technical training. You want your Kobelco equipment investment to be productive and keep your operation moving. **So do we.**



Your business deserves nothing less than world class product, supported by a world class business partner. That's your Kobelco dealer—your partner in productivity.

KOBELCO®

Kobelco Construction Machinery America LLC
245 E. North Avenue
Carol Stream, IL 60188-2021
866-726-3396 Toll Free
630-260-4000
630-260-4304 Fax

www.kobelcoamerica.com

Products represented in this brochure may include optional equipment.

Note: Due to our policy of continual product improvement, all design, materials and/or specifications are subject to change without advance notice and without liability therefor. Specifications are applicable to units sold in Canada, the United States, its territories and possessions, and may vary outside these areas.

Safety begins with a thorough understanding of the equipment. Always make sure you and your operators read the Operator's Manual before using the equipment. Pay close attention to all safety and operating decals and never operate machinery without all shields, protective devices and structures in place.

