

KOBELCO®

SK485LC ACERA MARK 8



Operating Weight
110,670 lbs (50,200 kg)

Net Horsepower
326 hp @ 1,850 rpm
(243 kW @ 1,850 rpm)

Max Digging Depth
25' 7" (7.81 m)

Bucket Capacity
1.5 to 4.0 cu yd
(1.15 to 3.06 m³)

Bucket Breakout Force
(SAE) 59,080 lbf (263 kN)
(ISO) 65,640 lbf (292 kN)

THE ULTIMATE BEAST OF BURDEN

The new **Kobelco SK485LC Acera Mark 8** hydraulic excavator is your best choice for fast cycle times and maximum productivity. The SK485LC delivers mega-power, ultra-smooth control and the most comfortable cab available. Kobelco technology delivers leading breakout forces and the fine control required for “finish quality” grading and leveling.

Powerfully Productive

The SK485LC leads the class in overall performance. Our proven Tier III **HINO** engine and efficient & quiet hydraulics deliver:

- 131,300 lbf-ft (178 kN•m) of Swing Torque.
- 59,080 lbs. (SAE) of bucket breakout force.
- 89,500 lbs. of drawbar pull force for climbing and pulling heavy loads.
- 38' 10" max. digging reach at ground level with standard 11' 4" (3.45 m) arm.

Proven **HINO** Engine Technology

- Efficient 642 cu. in., water-cooled, 6-cylinder direct injected diesel engine with intercooler turbo-charger.
- 1,030 lb-ft of engine torque (ISO14396).
- 326 net engine horsepower (243 kW) @ 1,850 rpm (ISO 14296).
- 10% more power with “*no time limit*” from our Power Boost™ system.
- 10% more power with “*no time limit*” from our Heavy Lift system.

Heavy-Duty by Design

- Longer, beefy X-frame offers enhanced stability and balance.
- Heavy-duty boom and arm are now standard.
- Rollers, sprockets and travel motors are sealed for long life.
- Robust lift cylinders ensure maximum rated capacity.
- Pumps, valves and piping are optimized for maximum efficiency.
- Flanged steel bucket bushing delivers long life.

Enhanced Operator Control

- **ITCS™ (Intelligent Total Control System)** recognizes your moves and assists by providing progressive power, where and when it is needed, so you stay in control.
- ITCS also provides the smooth, even movement required for fine grading and leveling.
- Auto-Accel smoothly increases engine rpms and hydraulic flow in direct proportion to the operator's movement of the control levers. This results in even, deliberate acceleration for precise applications.
- Auto-Decel reduces engine rpms after 4 seconds of operator inactivity, extending engine life and reducing fuel cost. Length of time delay is adjustable.



Easy, ground-level servicing of filters, batteries and hydraulics reduces maintenance time to boost your productivity.

The SK485LC provides superior bucket and drawbar pull forces so you can maneuver and operate in the most demanding conditions.





Spacious dimensions and an unrivaled view make the Kobelco cab the most comfortable and productive place to work.





The operator seat adjusts seven ways to maximize operator comfort.

Orange backlit monitor provides daytime visibility and system diagnostics to monitor critical functions and work modes.

SK485LC *Personalized Comfort*

UNPARALLELED VISIBILITY AND CONTROL

At Kobelco, we put you, the operator, first. We know you can't perform at your best if you're not comfortable. That is why Kobelco has gone to the extremes to ensure that our cabs are the most comfortable in the industry. The SK485LC delivers complete operational control, maximum comfort, progressive hydraulic acceleration and a clear view of the job site. The best combination for the ultimate in comfort and control.

A Cab Designed Around You, the Operator

- Oversized cab provides ample room and numerous comfort features.
- Super-wide entry/exit area provides easy access to the roomy cab.
- 7-way adjustable seat lets you personalize the level of comfort.
- Right-side located controls provide easy access to critical functions.
- Climate-controlled A/C & heating system maintains a constant working environment.
- AM/FM stereo with dual speakers is standard.
- 24 volt and 12 volt converter for charging cell phones and other accessories.
- Large storage area behind operator's seat.

Clear Job-Site Visibility

- Our cab provides clear visibility with minimal obstructions.
- Large glass panels provide an excellent view of the work station.
- Operator is positioned for maximum visibility of all functions and operations.
- Moveable front, top and side glass panels provide cross-flow ventilation.

Easy-to-Read Instruments

- New Monitor includes work mode selector switch, fuel and temperature gauges, and an orange backlit multi-display with large sun shade.
- Self-diagnostics with fault code memory makes it easy to monitor and adjust system pressures, engine speed, travel speed and other operating functions.
- Warning screens and audible alarms alert you to temperature and pressure status.
- Establish and review service interval reminders for engine oil, hydraulic oil, fuel and filters.

Personal Climate Control

- High efficiency/high output air conditioning & heating system.
- Programmable temperature for optimum and consistent comfort.
- Four fan speeds and LCD display let you monitor your environment.
- Redesigned vents efficiently circulate air around the operator's compartment for exceptional air flow.



Operators work with confidence, ease and with a clear view of the job site.



A personal climate control console includes an LCD display and controls for the high-output air conditioning and heating system and the four-speed fan. Just program a temperature between 64 and 90 degrees F (18 to 32 C) for optimum comfort any time of year.



SK485LC *Ultimate Performance*

GEAR-UP FOR PERFORMANCE

The new SK485LC excavator is powered by an **HINO** power train that's certified to meet Tier III emissions requirements. This 6-cylinder, electronic injected diesel engine with intercooler turbocharger cranks out 326 net horsepower and delivers 1,030 ft-lbs of torque. That is a significant increase in both horsepower and torque with improved fuel efficiency.

Power Mode Selection

The SK485LC provides four work modes:

- **H Mode:** Heavy-duty excavation work-gives priority to the workload at high speed (default mode).
- **S Mode:** Standard digging and loading work-provides fuel savings.
- **B Mode:** Breaker work (1-way hydraulic flow).
- **A Mode:** Demolition work with crusher/nibbler-breaker (2-way/2 pump flow).

Changing modes is fast and easily viewable on the orange, back-lit readout display

Auto Warm-up System

Kobelco's Acera Mark 8 series excavators feature a fully automatic engine and hydraulic warm-up system. This system warms up the hydraulic circuit to an optimum 126 degrees (F) and kicks in whenever ambient temperatures drop below 50 degrees (F). This feature improves system efficiency to make you more productive.

Smooth, Powerful Hydraulics

Kobelco performance features are unmatched by the competition.

- Power Boost™ provides approximately 10% more bucket breakout force - on command, *"without time limit"*.
- Heavy lift provides approximately 10% more lifting and swing capability – on command, *"without time limit"*.
- Independent travel circuit, exclusive to North American Kobelco products, provides dedicated flow for excavator travel.
- Swing priority dedicates power for trenching operations.
- Boom and arm holding valves minimize drift for accurate positioning.
- Standard high-flow valve can be switched between one-pump flow to two-pump flow from inside the cab.
- Hydraulic flow has been increased to improve overall performance.

Easy Ground Level Servicing

The SK485LC provides ground level access to:

- Side-by-side radiator, oil cooler and intercooler.
- Hydraulic pump, tank, hoses and filters.
- Batteries, air filter, back-up alarm and other connections.
- Tool box for storage of tools, work boots, lunch box, etc.

Designed with Attachments in Mind


Kobelco doesn't just design excavators; we design excavators for use with attachments for the jobsite.

- High-capacity hydraulic system is adjustable from inside the cab.
- Standard one or two-way auxiliary valve makes it easy to install piping and controls for auxiliary hydraulics.
- Two auxiliary hydraulic modes permit switching between one-way and two-way flow without leaving the cab to manually switch a valve (with auxiliary hydraulics installed).
- An optional independent flow 'extra' circuit, with dedicated rotary gear pump, provides flow for multi-function attachments that include thumbs or twist buckets.


Feel the passion we've built into the new Kobelco SK485LC excavator. If you demand productivity, performance and fine control, see your nearest Kobelco dealer today, or use our dealer locator at www.kobelcoamerica.com to find the dealer nearest you.



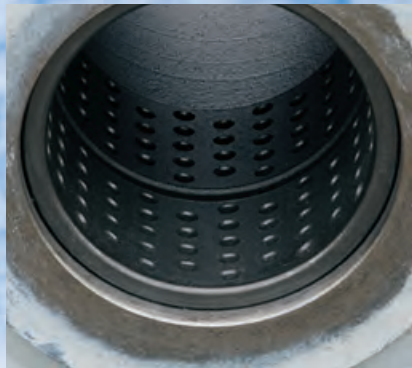
Critical maintenance checks, like inspecting the two-stage air filter can be performed from ground level.



The SK485LC uses dual, high-performance hydraulic pumps and a clean system layout for high performance and easy component access.



Side-by-side radiator, oil cooler and turbo intercooler are easily accessible for inspection and cleaning. This design allows removal of the radiator without draining the hydraulic system.



Flanged brass bucket bushing provides long life and extended maintenance intervals.

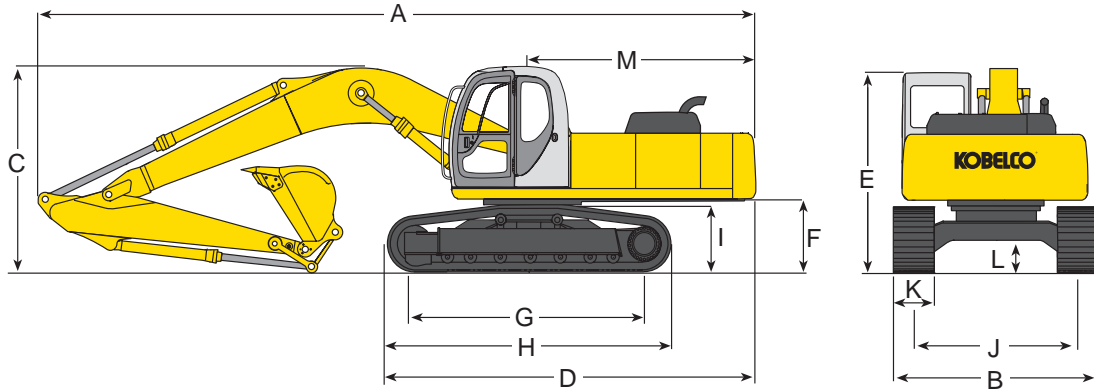


Reliable 642 cu. in. (10.52 L) water-cooled, 6-cylinder turbo-charged **HINO** engine puts out 326 hp (243 kW) and 1,030 lb-ft (1,400 Nm) of ground breaking torque.

The Power mode system provides four power modes to match your work operations. The monitor features a large sunshade and orange back-lit screen for easy daytime viewing.



SK485LC DIMENSIONS, WEIGHTS & BUCKET SELECTION CHART



DIMENSIONS

ARM LENGTH	ft (m)	11' 4"	(3.45)
BOOM LENGTH		23' 0"	(7.0)
A Overall length		39' 4"	(11.99)
B Overall width (with 900 mm shoe)		12' 0"	(3.65)
C Overall height (to top of boom)		11' 7"	(3.53)
D Basic machine length		21' 0"	(6.4)
E Overall height (to top of cab)*		10' 10"	(3.31)
F Ground clearance of rear end*		4' 5"	(1.34)
G Center distance of tumbler		14' 5"	(4.4)
H Overall length of crawler		17' 11"	(5.46)
I Crawler height at tumbler center*		3' 11"	(1.2)
J Track gauge		9' 0"	(2.75)
K Width of crawler shoe		35.4"	(0.9)
L Ground clearance of undercarriage*		1' 8"	(0.515)
M Tail swing radius		12' 0"	(3.66)

* Excludes height of grouser bar

WEIGHTS

SK485LC with 11'4" (3.45 m) std. HD arm, and 2.50 cu yd (1.91 m³) bucket weighing 3,330 lbs (1510 kg)

Bucket weight	lb (kg)	3,330 (1,510)
Shoe width	in (mm)	35.4 (900)
Machine overall width	ft-in (mm)	12' 0" (3,650)
Ground pressure	psi (kPa)	8.27 (5.73)
Operating weight with bucket	lb (kg)	110,670 (50,200)

HYDRAULIC SYSTEM

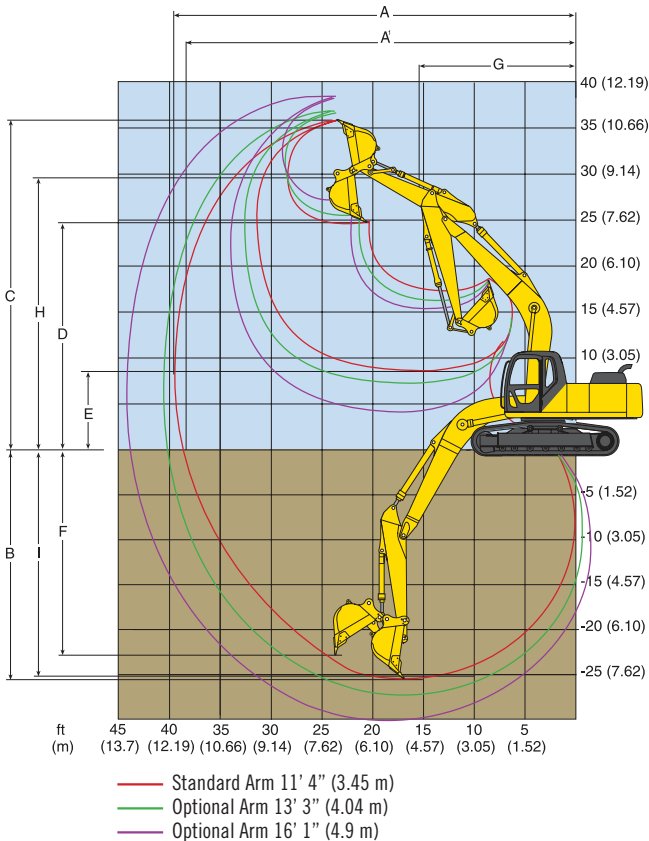
Hydraulic pump type	Variable displacement piston		
Pump	2 VP + 1 FG		
Max discharge flow	US gal/min (l/min)	2 x 97.8	(2 x 370)
Auxiliary pump output	US gal/min (l/min)	1 x 7.9	(1 x 30)
Operating pressure:			
Implement	psi (MPa)	4,970	(34.3)
Travel	psi (MPa)	4,970	(34.3)
Swing	psi (MPa)	3,630	(25.0)
Power Boost/Heavy lift	psi (MPa)	5,260	(36.3)
Pilot control circuit	psi (MPa)	725	(5.0)
Control valves (directional)	6-spool valves		

BUCKET SELECTION CHART

Bucket Duty	Capacity (SAE)		Width		Bucket		Arm ft-in (m)		
	Cubic Yard (m ³)		Inches (m)		Weight lb (kg)		11'4" (3.45)	13'3" (4.04)	16'1" (4.9)
General	1.5	(1.146)	30	(.762)	3,640	(1,651)	H	H	H
	2.0	(1.529)	36	(.914)	2,825	(1,281)	H	H	M
	2.375	(1.815)	42	(1.066)	3,035	(1,377)	H	H	L
	2.75	(2.102)	48	(1.219)	3,225	(1,463)	H	M	X
	3.125	(2.389)	54	(1.37)	3,380	(1,533)	M	L	X
	3.5	(2.675)	60	(1.52)	3,625	(1,644)	L	X	X
Heavy Duty	1.5	(1.146)	30	(.762)	2,840	(1,288)	H	H	H
	2.0	(1.529)	36	(.914)	3,040	(1,379)	H	H	M
	2.375	(1.815)	42	(1.066)	3,265	(1,481)	H	M	L
	2.75	(2.102)	48	(1.219)	3,470	(1,574)	H	L	X
	3.125	(2.389)	54	(1.37)	3,635	(1,549)	M	X	X
	3.50	(2.675)	60	(1.52)	3,895	(1,767)	L	X	X
Severe Duty	1.5	(1.146)	33	(.838)	3,155	(1,431)	H	H	M
	1.75	(1.337)	36	(.914)	3,300	(1,497)	H	M	L
	2.125	(1.624)	42	(1.066)	3,640	(1,651)	H	L	X
	2.5	(1.911)	48	(1.219)	3,950	(1,792)	M	X	X
	3.0	(2.293)	58	(1.473)	4,475	(2,030)	L	X	X

H - Used with material weight up to 3,000 lbs/cu yd (1,780 kg/m³) M - Used with material weight up to 2,500 lbs/cu yd (1,483 kg/m³) L - Used with material weight up to 2,000 lbs/cu yd (1,186 kg/m³) X - Not recommended

SK485LC SPECIFICATIONS



This chart is a graphic representation of the working ranges for the SK485LC equipped with a 11' 4" (3.45 m) arm.

Travel speed (Turtle)	2.1 mph (3.4 km/h)
Travel speed (Rabbit)	3.4 mph (5.4 km/h)
Swing speed	7.8 rpm
Gradeability	35 degrees (70%)
Drawbar pulling force	89,500 lbs (398 kN)
Ground Bearing Pressure	8.30 psi (57.2 kPa)

SPECIFICATION SUMMARY

GENERAL

w/out bucket	lb (kg)	107,340	(48,690)
Bucket capacity range (SAE heaped)	cu yd (m ³)	1.5 to 4.0	(1.15 to 3.06)
Counterweight		23,444 lbs	(10,634 kg)

ENGINE

Make and Model	HINO motors	P11C-UP
Type	Water-cooled, 6-Cylinder direct injection diesel engine with intercooler turbo-charger	
Displacement	cu in (l)	642 (10.52)
Bore	in (mm)	4.8 (122)
Stroke	in (mm)	5.91 (150)
Electrical system		24 volts (60 amp)
Horsepower SAE NET	hp (kW) @ rpm	326 @ 1,850 (243 @ 1,850)
Max torque - SAE	lbf-ft (Nm)	1,030 @ 1,400 (1,400 @ 1,400)

WORKING RANGES

ARM	ft-in (m)	Standard 11' 4" (3.45)	Optional 13' 3" (4.04)	Optional 16' 1" (4.9)
A Max digging reach		39' 7" (12.07)	41' 4" (12.59)	44' 3" (13.48)
A ¹ Max digging reach at ground level		38' 10" (11.84)	40' 7" (12.38)	43' 7" (13.28)
B Max digging depth		25' 7" (7.81)	27' 6" (8.39)	30' 4" (9.25)
C Max digging height		35' 10" (10.93)	36' 5" (11.09)	38' 5" (11.71)
D Max dumping clearance		24' 10" (7.58)	25' 5" (7.75)	27' 3" (8.31)
E Min dumping clearance		9' 1" (2.77)	7' 3" (2.20)	4' 5" (1.34)
F Max vertical wall digging depth		23' 4" (7.12)	24' 5" (7.43)	27' 7" (8.40)
G Min front swing radius		16' 10" (5.14)	17' 1" (5.20)	17' 5" (5.30)
H Height at min front swing radius		29' 7" (9.04)	29' 8" (9.05)	29' 8" (9.05)
I Digging depth at 8' (2.4 m) level bottom		25' 2" (7.66)	27' 1" (8.26)	30' 0" (9.14)

Measurements shown are for machines equipped with the 2.50 cu. yd. (1.91 m³) bucket.

BREAKOUT FORCES*

ARM	ft-in (m)	11' 4" (3.45)
Arm crowding force	SAE lbf (kN)	48,415 (215)
Arm crowding force	ISO lbf (kN)	49,910 (222)
Bucket breakout force	SAE lbf (kN)	59,080 (263)
Bucket breakout force	ISO lbf (kN)	65,640 (292)

*All forces represented are with Power Boost.

REFILL CAPACITIES

Fuel tank capacity	gal (l)	172 (650)
Hydraulic oil reservoir	gal (l)	79 (300)
Hydraulic system including oil reservoir	gal (l)	147 (555)
Cooling system	gal (l)	11 (41)
Lubrication: engine oil	gal (l)	13 (50)

UNDERCARRIAGE

Track overall length	ft-in (m)	17' 11" (5.46)
Track overall width w/std. shoe	ft-in (m)	12' 0" (3.65)
Standard track shoe	in (mm)	35.4 (900)
Ground clearance	in (mm)	1' 8" (515)

SWING SYSTEM

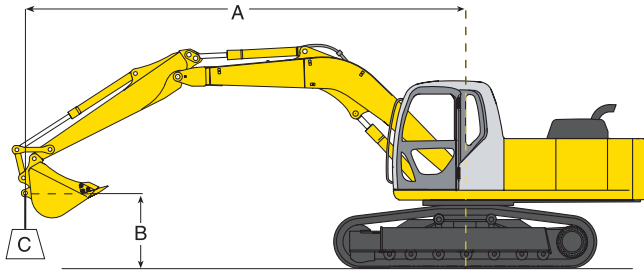
Max swing speed	rpm	7.8
Swing torque	lbf-ft (kN • m)	131,300 (178)
Tail swing radius	ft-in (m)	12' 0" (3.66)
Min front swing radius	ft-in (m)	16' 10" (5.14)

SHIPPING DIMENSIONS

Max. Height	ft-in (m)	11' 7" (3.53)
Width w/std. shoe 34.5" (900mm)	ft-in (m)	12' 0" (3.65)
Transport Length	ft-in (m)	39' 4" (11.99)



SK485LC LIFT CAPACITIES — 11' 4" Arm



- A Reach swing centerline to bucket hook
- B Bucket hook height above/below ground
- C Lifting capacities in pounds and kilograms

- Max discharge pressure: 5,260 psi (36.3 MPa)
- Boom: 23' 0" (7.0 m)
- Bucket weight: 3,330 lbs. (1,510 kg)

LIFTING CAPACITY — 35.4" (900 mm) triple grouser shoe

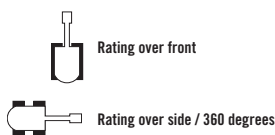
Based on machine equipped with — Arm: 11'4" (3,450 mm) Bucket: SAE heaped 2.50 cu. yd. (1.91 m³) bucket.

B	A	LIFT POINT RADIUS												AT MAX. REACH		
		5' (1.5 m)		10' (3.0 m)		15' (4.6 m)		20' (6.1 m)		25' (7.6 m)		30' (9.1 m)		RADIUS		
		C														
25' (7.6 m)	lb													16,541	*16,541	29' 7"
	kg													7,503	*7,503	(9.03 m)
20' (6.1 m)	lb															32' 0"
	kg													16,566	14,467	(9.77 m)
15' (4.6 m)	lb															33' 7"
	kg													17,097	12,932	(10.23 m)
10' (3.0 m)	lb					*42,247	*42,247	*30,455	28,735	*24,727	20,459	*21,519	15,282	18,241	12,042	34' 4"
	kg					*19,163	*19,163	*13,814	13,034	*11,216	9,280	*9,761	6,932	8,274	5,462	(10.46 m)
5' (1.5 m)	lb					*50,226	40,922	*35,135	26,932	*27,551	19,414	*23,206	14,681	19,996	11,751	34' 3"
	kg					*22,782	18,562	*15,937	12,216	*12,497	8,806	*10,526	6,659	9,070	5,330	(10.45 m)
Ground Level	lb					*21,711	*21,711	*54,018	39,569	*38,330	25,821	*29,723	18,678	*24,526	14,246	34' 6"
	kg					*9,848	*9,848	*24,502	17,948	*17,386	11,712	*13,482	8,472	*11,125	6,462	(10.51 m)
-5' (-1.5 m)	lb	*25,900	*25,900	*34,855	*34,855	*54,531	39,337	*39,681	25,375	*30,823	18,327	24,368	14,068	22,075	12,780	32' 0"
	kg	*11,748	*11,748	*15,810	*15,810	*24,735	17,843	*17,999	11,510	*13,981	8,313	11,053	6,381	10,013	5,797	(9.74 m)
-10' (-3.0 m)	lb	*38,468	*38,468	*49,866	*49,866	*52,474	39,769	*39,059	25,477	*30,433	18,382			*24,570	14,511	29' 6"
	kg	*17,449	*17,449	*22,619	*22,619	*23,802	18,039	*17,717	11,556	*13,804	8,338			*11,145	6,582	(9.00 m)
-15' (-4.6 m)	lb			*67,373	*67,373	*47,119	40,860	*35,631	26,158	*27,280	18,997			*26,270	18,360	25' 7"
	kg			*30,560	*30,560	*21,373	18,534	*16,162	11,865	*12,374	8,617			*11,916	8,328	(7.80 m)
-20' (-6.1 m)	lb					*37,348	*37,348	*27,573	27,573					*27,608	*27,608	20' 0"
	kg					*16,941	*16,941	*12,507	12,507					*12,523	*12,523	(6.10 m)

LIFTING CAPACITY — 31.5" (800 mm) triple grouser shoe

Based on machine equipped with — Arm: 11'4" (3,450 mm) Bucket: SAE heaped 2.50 cu. yd. (1.91 m³) bucket.

B	A	LIFT POINT RADIUS												AT MAX. REACH		
		5' (1.5 m)		10' (3.0 m)		15' (4.6 m)		20' (6.1 m)		25' (7.6 m)		30' (9.1 m)		RADIUS		
		C														
25' (7.6 m)	lb													16,541	*16,541	29' 7"
	kg													7,503	*7,503	(9.03 m)
20' (6.1 m)	lb															32' 0"
	kg													16,566	14,301	(9.77 m)
15' (4.6 m)	lb															33' 7"
	kg													17,097	12,774	(10.23 m)
10' (3.0 m)	lb					*42,247	*42,247	*30,455	28,437	*24,727	20,234	*21,519	15,102	18,241	11,887	34' 4"
	kg					*19,163	*19,163	*13,814	12,899	*11,216	9,178	*9,761	6,850	8,274	5,392	(10.46 m)
5' (1.5 m)	lb					*50,226	40,479	*35,135	26,634	*27,551	19,189	*23,206	14,500	19,914	11,596	34' 3"
	kg					*22,782	18,361	*15,937	12,081	*12,497	8,704	*10,526	6,577	9,033	5,260	(10.45 m)
Ground Level	lb					*21,711	*21,711	*54,018	39,125	*38,330	25,523	*29,723	18,453	24,266	14,065	34' 6"
	kg					*9,848	*9,848	*24,502	17,747	*17,386	11,577	*13,482	8,370	11,007	6,380	(10.51 m)
-5' (-1.5 m)	lb	*25,900	*25,900	*34,855	*34,855	*54,531	38,896	*39,681	25,078	*30,823	18,102	24,072	13,877	24,537	12,613	32' 0"
	kg	*11,748	*11,748	*15,810	*15,810	*24,735	17,643	*17,999	11,375	*13,981	8,211	10,919	6,299	11,130	5,721	(9.74 m)
-10' (-3.0 m)	lb	*38,468	*38,468	*49,866	*49,866	*52,474	39,328	*39,059	25,179	*30,433	18,157			26,634	14,328	29' 6"
	kg	*17,449	*17,449	*22,619	*22,619	*23,802	17,839	*17,717	11,421	*13,804	8,236			12,081	6,499	(9.00 m)
-15' (-4.6 m)	lb			*67,373	*67,373	*47,119	40,428	*35,631	25,860	*27,280	18,772			*28,307	18,142	25' 7"
	kg			*30,560	*30,560	*21,373	18,334	*16,162	11,730	*12,374	8,515			*12,840	8,229	(7.80 m)
-20' (-6.1 m)	lb					*37,348	*37,348	*27,573	27,284					*28,713	27,317	20' 0"
	kg					*16,941	*16,941	*12,507	12,376					*13,024	12,391	(6.10 m)



Notes:

1. Do not attempt to lift or hold any load that is greater than these rated values at their specified load radius and height. Weight of all accessories must be deducted from the above lifting capacities.
2. Lifting capacities are based on machine standing on level, firm and uniform ground.
3. User must make allowance for job conditions such as soft or uneven ground, out of level conditions, experience of personnel, etc.
4. Ratings at bucket lift hook.
5. The above rated loads are in compliance with ISO 10567. They do not exceed 87% of hydraulic lifting capacity or 75% of tipping load.
6. Rated loads are marked with an asterisk (*) are limited by hydraulic capacity rather than tipping load.
7. Operator should be fully acquainted with the operator's and Maintenance Instructions before operating this machine and rules for safe operation of equipment should be adhered to at all times.
8. Capacities apply to only machine as originally manufactured and normally equipped by KOBELCO Construction Machinery America LLC.

SK485LC High & Wide

DIMENSIONS

Overall length	ft-in (m)	39' 4" (11.99)
Overall width	ft-in (m)	12' 7" (3.84)
Overall height	ft-in (m)	12' 10" (3.90)
Basic machine length	ft-in (m)	20' 12" (6.40)
Width of revolving upper structure	ft-in (m)	10' 10" (3.30)
Height to top of cab	ft-in (m)	12' 1" (3.68)
Radius of rear end	ft-in (m)	12' 0" (3.67)
Ground clearance of rear end	ft-in (m)	5' 7" (1.71)
Center distance of tumbler	ft-in (m)	14' 5" (4.40)
Overall length of crawler	ft-in (m)	17' 11" (5.46)
Overall width of crawler	ft-in (m)	12' 7" (3.84)
Crawler height at tumbler center	ft-in (m)	3' 11" (1.20)
Track gauge	ft-in (m)	9' 8" (2.94)
Width of crawler shoe	ft-in (m)	2' 7" (0.80)
Ground clearance of undercarriage	ft-in (m)	2' 10" (0.85)

PERFORMANCE

Operating weight	lbs (kg)	116,889 (53,012)
Engine SAE NET horsepower	hp (kW) @ rpm	326 @ 1,850 (243 @ 1,850)
Bucket digging force	lb (kN)	60,080 (267)
Arm digging force	lb (kN)	57,670 (257)
Travel speed	mph (km/h)	3.5/2.2 (5.6/3.5)
Drawbar pull	lb (kN)	84,709 (377)
Gradability	degrees (%)	35 (70)
Swing speed	rpm	7.8
Swing torque	lb-ft (kNm)	131,300 (178)
Ground Pressure	psi (kPa)	8.78 (60.54)

SHIPPING DIMENSIONS

Max. height	ft-in (m)	12' 10" (3.90)
Width w/std. shoe	ft-in (m)	12' 7" (3.84)
Transport length	ft-in (m)	39' 4" (11.99)

LIFTING CAPACITY – 31.5" (800 mm) triple grouser shoe

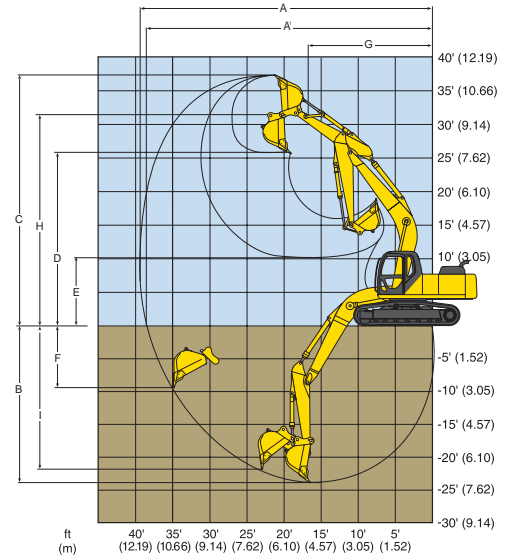
Based on machine equipped with – Arm: 11'4" (3,450 mm) Bucket: SAE heaped 2.50 cu. yd. (1.91 m³) bucket.

B	C	LIFT POINT RADIUS										AT MAX. REACH				
		5' (1.5 m)		10' (3.0 m)		15' (4.6 m)		20' (6.1 m)		25' (7.6 m)		30' (9.1 m)		RADIUS		
25'	lb															
(7.6 m)	kg															
20'	lb															
(6.1 m)	kg															
15'	lb															
(4.6 m)	kg															
10'	lb															
(3.0 m)	kg															
5'	lb															
(1.5 m)	kg															
Ground Level	lb															
	kg															
-5'	lb															
(-1.5 m)	kg															
-10'	lb															
(-3.0 m)	kg															
-15'	lb															
(-4.6 m)	kg															
-20'	lb															
(-6.1 m)	kg															

LIFTING CAPACITY – 31.5" (800 mm) triple grouser shoe

Based on machine equipped with – Arm: 13'3" (4,040 mm) Bucket: SAE heaped 1.83 cu. yd. (1.40 m³) bucket.

B	C	LIFT POINT RADIUS										AT MAX. REACH				
		5' (1.5 m)		10' (3.0 m)		15' (4.6 m)		20' (6.1 m)		25' (7.6 m)		30' (9.1 m)		RADIUS		
25'	lb															
(7.6 m)	kg															
20'	lb															
(6.1 m)	kg															
15'	lb															
(4.6 m)	kg															
10'	lb															
(3.0 m)	kg															
5'	lb															
(1.5 m)	kg															
Ground Level	lb															
	kg															
-5'	lb															
(-1.5 m)	kg															
-10'	lb															
(-3.0 m)	kg															
-15'	lb															
(-4.6 m)	kg															
-20'	lb															
(-6.1 m)	kg															

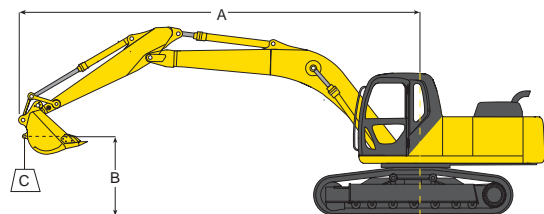


This chart is a graphic representation of the working ranges for the SK485LC equipped with a 11' 4" (3.45 m) arm.

WORKING RANGES

STANDARD 11' 4" (3.45 m) arm	ft-in	(m)
A Max digging reach	39' 7"	(12.07)
A ¹ Max digging reach at ground level	38' 10"	(11.84)
B Max digging depth	24' 5"	(7.44)
C Max digging height	37' 1"	(11.30)
D Max dumping clearance	26' 1"	(7.95)
E Min dumping clearance	10' 4"	(3.14)
F Max vertical wall digging depth	22' 2"	(6.75)
G Min front swing radius	16' 10"	(5.14)
H Height at min front swing radius	30' 10"	(9.41)
I Digging depth at 8' (2.4 m) level bottom	24' 0"	(7.32)

For (non-shipping) product dimensions see page 8 for the standard unit configuration.



- A Reach swing centerline to bucket hook
- B Bucket hook height above/below ground
- C Lifting capacities in pounds and kilograms
 - Max discharge pressure: 5,260 psi (36.3 MPa)
 - Track shoe: 35.4" (900 mm) Triple grouser

LIFTING CAPACITY – 31.5" (800 mm) triple grouser shoe

Based on machine equipped with – Arm: 16'1" (4,900 mm) Bucket: SAE heaped 1.83 cu. yd. (1.40 m³) bucket.

B	C	LIFT POINT RADIUS										AT MAX. REACH				
		5' (1.5 m)		10' (3.0 m)		15' (4.6 m)		20' (6.1 m)		25' (7.6 m)		30' (9.1 m)		RADIUS		
25'	lb															
(7.6 m)	kg															
20'	lb															
(6.1 m)	kg															
15'	lb															
(4.6 m)	kg															
10'	lb															
(3.0 m)	kg															
5'	lb															
(1.5 m)	kg															
Ground Level	lb															
	kg															
-5'	lb															
(-1.5 m)	kg															
-10'	lb															
(-3.0 m)	kg															
-15'	lb															
(-4.6 m)	kg															
-20'	lb															
(-6.1 m)	kg															

SK485LC Mass Excavator

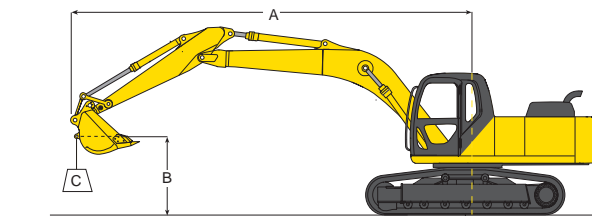
PERFORMANCE

Operating weight	lbs (kg)	112,870	(51,198)
Engine SAE NET horsepower	hp (kW) @ rpm	326 @ 1,850	(243 @1,850)
Bucket digging force	lb (kN)	60,024	(267)
Arm digging force	lb (kN)	57,776	(257)
Travel speed	mph (km/h)	3.5/2.2	(5.6/3.5)
Drawbar pull	lb (kN)	90,600	(403)
Gradability	degrees (%)	35	(70)
Swing speed	rpm	7.8	
Swing torque	lb-ft (kN•m)	131,300	(178)
Ground Pressure	psi (kPa)	8.48	(58.5)

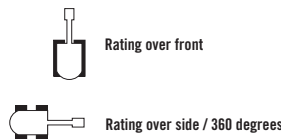
SHIPPING DIMENSIONS

Max. height	ft-in (m)	12' 8"	(3.86)
Width w/std. shoe	ft-in (m)	12' 0"	(3.65)
Transport length	ft-in (m)	37' 8"	(11.49)

For (non-shipping) product dimensions see page 8 for the standard unit configuration.



- A Reach swing centerline to bucket hook
- B Bucket hook height above/below ground
- C Lifting capacities in pounds and kilograms
 - Max discharge pressure: 5,260 psi (36.3 MPa)
 - Track shoe: 35.4" (900 mm) Triple grouser

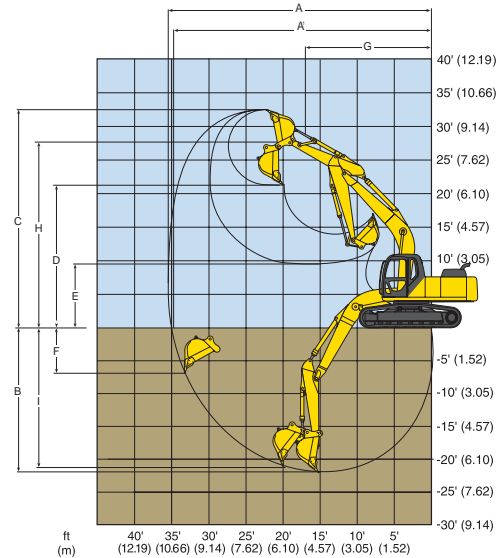


LIFTING CAPACITY – 31.5" (800 mm) triple grouser shoe

Based on machine equipped with – Arm: 7' 10.5" (2,400 mm) Bucket: SAE heaped 5.50 cu. yd. (4.21 m³) bucket.

B	C	LIFT POINT RADIUS										AT MAX. REACH		
		5' (1.5 m)		10' (3.0 m)		15' (4.6 m)		20' (6.1 m)		25' (7.6 m)		RADIUS		
		Hook	Side	Hook	Side	Hook	Side	Hook	Side	Hook	Side			
25' (7.6 m)	lb kg											14,531 6,591	*14,531 *6,591	29' 7" (9.03 m)
20' (6.1 m)	lb kg									*21,222 *9,626	*21,222 *9,626	14,542 6,596	13,607 6,172	32' 0" (9.77 m)
15' (4.6 m)	lb kg							*26,195 *11,882	*26,195 *11,882	*23,184 *10,516	21,680 9,834	15,011 6,809	12,119 5,497	33' 7" (10.23 m)
10' (3.0 m)	lb kg					*42,800 *19,414	*42,800 *19,414	*31,482 *14,280	29,141 13,218	*26,015 *11,800	20,556 9,324	15,805 7,169	11,647 5,283	34' 5" (10.48 m)
5' (1.5 m)	lb kg					*50,779 *23,033	41,747 18,936	*36,037 *16,346	27,344 12,403	*28,642 *12,992	19,568 8,876	17,372 7,880	11,343 5,145	34' 4" (10.47 m)
Ground Level	lb kg			*19,200 *8,709	*19,200 *8,709	*54,635 *24,782	40,164 18,218	*39,099 *17,735	26,189 11,879	*30,576 *13,869	18,863 8,556	*18,614 *8,443	11,530 5,230	33' 7" (10.24 m)
-5' (-1.5 m)	lb kg	*22,950 *10,410	*22,950 *10,410	31,061 *14,089	31,061 *14,089	*54,933 *24,917	39,807 18,056	*40,137 *18,206	25,719 11,666	*31,202 *14,153	18,565 8,421	*19,736 *8,952	12,302 5,580	32' 1" (9.77 m)
-10' (-3.0 m)	lb kg	*34,306 *15,561	*34,306 *15,561	*44,608 *20,234	*44,608 *20,234	*52,036 *23,603	40,265 18,264	*38,656 *17,534	25,887 11,742			*21,034 *9,541	13,951 6,328	29' 7" (9.03 m)
-15' (-4.6 m)	lb kg			*58,429 *26,503	*58,429 *26,503	*44,154 *20,028	41,650 18,892					*22,578 *10,241	17,635 7,999	25' 9" (7.84 m)

- Notes:
- Do not attempt to lift or hold any load that is greater than these rated values at their specified load radius and height. Weight of all accessories must be deducted from the above lifting capacities.
 - Lifting capacities are based on machine standing on level, firm and uniform ground.
 - User must make allowance for job conditions such as soft or uneven ground, out of level conditions, experience of personnel, etc.
 - Ratings at bucket lift hook.
 - The above rated loads are in compliance with ISO 10567. They do not exceed 87% of hydraulic lifting capacity or 75% of tipping load.
 - Rated loads are marked with an asterisk (*) are limited by hydraulic capacity rather than tipping load.
 - Operator should be fully acquainted with the operator's and Maintenance Instructions before operating this machine and rules for safe operation of equipment should be adhered to at all times.
 - Capacities apply to only machine as originally manufactured and normally equipped by KOBELCO Construction Machinery America LLC.



This chart is a graphic representation of the working ranges for the SK485LC equipped with a 11' 4" (3.1 m) arm.

WORKING RANGES

	Standard	ft-in	(m)
STANDARD 7' 10" (2.4 m) arm			
A	Max digging reach	35' 2"	(10.73)
A ¹	Max digging reach at ground level	34' 5"	(10.48)
B	Max digging depth	21' 10"	(6.65)
C	Max digging height	32' 7"	(9.93)
D	Max dumping clearance	20' 9"	(6.32)
E	Min dumping clearance	9' 9"	(2.97)
F	Max vertical wall digging depth	6' 3"	(1.91)
G	Min front swing radius	17' 0"	(5.18)
H	Height at min front swing radius	28' 0"	(8.53)
I	Digging depth at 8' (2.4 m) level bottom	21' 3"	(6.48)

ACERA Mark 8™



SK485LC STANDARD AND OPTIONAL EQUIPMENT

STANDARD EQUIPMENT

- AM/FM radio
- Arm, 11' 4" (3.45 m) with vertical ribbed rock guard, tapped blocks, breaker ready
- Audible warning system for high coolant temperature, low engine oil pressure, clogged air filter and oil replacement interval
- Auxiliary valve with flow control
- Automatic swing and travel parking brakes
- Automatic engine accel/decel feature
- Automatic engine & hydraulic warm up function
- Boom: 23' 0" (7.0 m)
- Boom and arm holding (anti-drift) valves
- 1 or 2-way auxiliary valve with flow control
- Cab is die formed, modular steel full-vision, sound insulated, with viscous silicon-filled mounts, windshield wiper, heater and defroster, cigarette lighter, ashtray, floor mat, cab light, control lever lock, tinted skylight with damper cylinder
- Climate control air conditioning/heating system
- Counter weight 23,444 lbs (10,634 kg)
- Display monitor mounted on multi-function console provides status of following: aging of engine oil, fuel and hydraulic filters, system status, engine preheat, low engine, oil pressure, engine coolant temperature, air cleaner restriction, battery charging, fuel level, CPU error and tachometer. Beneath monitor are switches for auto-decel, windshield washer and wiper, mode selector, one/two pump auxiliary hydraulics and swing flashers
- Double pump flow for bucket
- Dual element engine air cleaner
- Electric horn
- Emergency electronic bypass
- Engine shuts down automatically if low oil pressure occurs
- Flanged brass bucket bushing
- Floor mat - removable, washable, replaceable
- Fuel tank: 172 gallons (650 liters)
- Heavy duty batteries (2 x 12 volt 136 AH)
- Heavy Lift "without time limit"
- Hydraulic track adjusters
- Independent travel
- Lifetime lubricated track rollers, idlers and sprockets, grease cylinder track adjuster, track link disassembly mechanism, long pitch sealed and strutted track links.
- Long-life attachment bushings. Flanged bushing assembly at bucket pivot.
- **HINO Motors, Ltd.** Engine, model P11C-UP
- Mode selection:
 - H Mode—Heavy-duty excavation work
 - S Mode—Standard digging and loading work
 - B Mode—Breaker work
 - A Mode—Demolition work with crusher/nibbler-breaker
- Heavy-Duty X-Frame undercarriage
- Power boost "without time limit"
- Power outlet, 24 volt to 12 volt converter
- Proportional auto accel system

- Removable cleanout screens for radiator & condensers
- Removable travel levers with toe tabs
- Nine (9) track rollers, (2) upper rollers per side
- Self-lubricating bushings in boom foot and boom hoist cylinders
- Service diagnostics:
- Side-by-side radiator, oil cooler and turbocharger intercooler
- Computer system displays 68 service items and 60 event fault code memory - accessible from cab
- Starting motor (24 v/5.0 KW) 60 amp alternator
- Straight travel system
- Storage compartment for manuals
- Suspension seat—7-way adjustable w/ safety belt
- Swing and travel automatic parking brakes
- Swing flashers recessed into counterweight. Off/on switch located on multi-function console in cab
- Swing priority (trenching system) functions automatically
- Swing shockless valve
- Tool box storage with side access
- Track shoes: 35.4" (900mm) semi-triple bar grouser
- Travel Alarm
- Travel—two speed with automatic shift
- Two lever control for boom, arm, bucket and swing; pilot operated wrist controls and foot pedals
- Warm up function of engine and hydraulic system, functions automatically
- Work lights—three front and two rear

OPTIONAL EQUIPMENT

- Arm: 13' 1" (4.04 m) with rock guard
- Arm: 16' 1" (4.9 m) with rock guard
- Belly pan guard
- Boom and arm load (lock) valves
- Breaker piping and controls
- Combined one-way or two way auxiliary hydraulic piping (one or two pump) with hand or foot controls
- Control pattern changer (ISO/BHL)
- Counterweight removal system
- Front rain visor
- Hydraulic oil for cold or tropical environments
- High & Wide (heavy duty) lower undercarriage
- Independent low-flow rotation system
- Large selection of ESCO & HENSLEY buckets
- Mass Excavator attachment (incl. boom, arm, cylinder and linkage)
- 1 or 2-way auxiliary hydraulics with piping and hand/foot controls (one pump)
- Single pedal travel
- Track shoe: 31.5" (800 mm) double bar grouser
- Vandalism guards-cab

NOTE: Due to our policy of continual product improvement, all designs and specifications are subject to change without advance notice.

WORLD CLASS PRODUCTS DEMAND WORLD CLASS DEALERS

The purchase of a Kobelco excavator isn't the end, it's the beginning of our relationship together. Consider your local Kobelco dealer as your partner in productivity who will work with you to supply your business needs. Whether you need assistance in selecting the right model for your operation or developing an affordable leasing or financing plan through CNH Capital, your Kobelco dealer can offer you sound advice because he has decades of heavy equipment experience.

Downtime can happen at any time. And that's the best time to know you've got your Kobelco dealer's full service capabilities. He's the 'one stop shop' who is just down the street. Genuine Kobelco parts and all makes parts coverage, where and when you need them. Factory-trained service technicians, warranty experts and parts manager who are excavator experts. Fully equipped service vehicles which can bring responsive support to you quickly, to get you back up and running. Even customized professional maintenance programs, operator and technical training. You want your Kobelco equipment investment to be productive and keep your operation moving. **So do we.**



Your business deserves nothing less than world class product, supported by a world class business partner. That's your Kobelco dealer—your partner in productivity.

KOBELCO®

Kobelco Construction Machinery America LLC
245 E. North Avenue
Carol Stream, IL 60188-2021
866-726-3396 Toll Free
630-260-4000
630-260-4304 Fax

www.kobelcoamerica.com

Products represented in this brochure may include optional equipment.

Note: Due to our policy of continual product improvement, all design, materials and/or specifications are subject to change without advance notice and without liability therefor. Specifications are applicable to units sold in Canada, the United States, its territories and possessions, and may vary outside these areas.

Safety begins with a thorough understanding of the equipment. Always make sure you and your operators read the Operator's Manual before using the equipment. Pay close attention to all safety and operating decals and never operate machinery without all shields, protective devices and structures in place.

