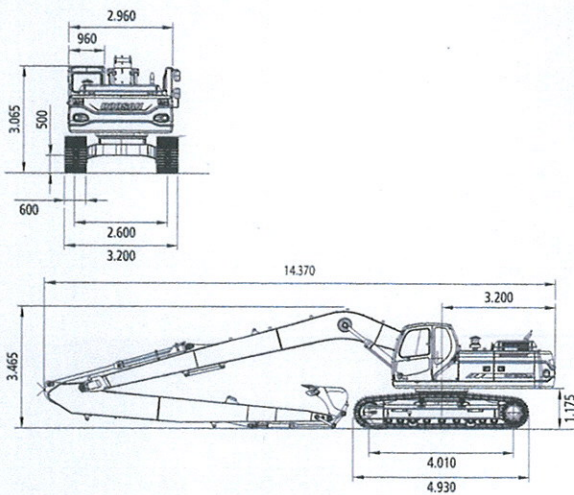


# Dimensions & working range

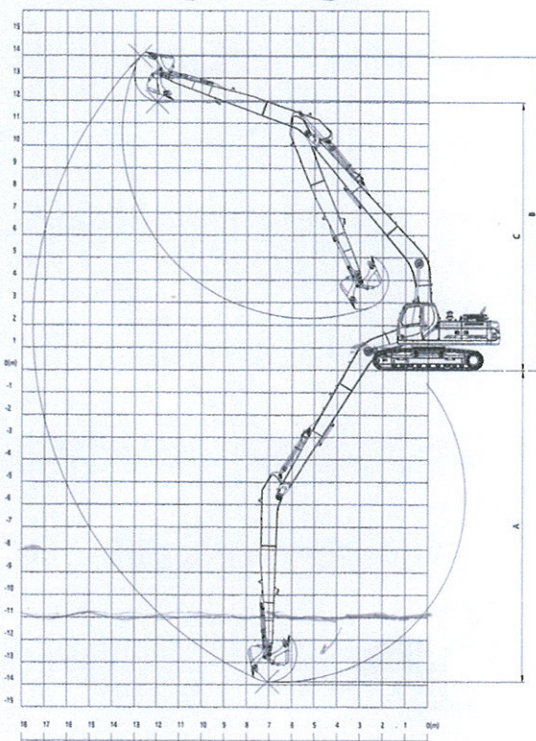
## DX300LC SLR



### Dimensions



### Working Ranges



Operating weight	kg	30.000
Bucket		
Capacity SAE	m <sup>3</sup>	0,64 1
Engine		
Model		DOOSAN DLo6
Displacement (Total dis. volume)	cc	7.640
Rated power/R. P. M.	Hp/rpm	197/1.900
	kW/rpm	147/1.900
Front		
Boom	mm	10.000
Arm	mm	7.000
Dimensions		
Shipping height (Boom)	mm	3.465
Shipping length	mm	14.370
Shipping width	mm	3.200
Working Range		
(A) Max. digging depth	mm	13.875
(B) Max. digging height	mm	14.155
(D) Max. digging reach	mm	17.520
Rear-and swing radius	mm	6.125
Performance		
Max. digging force Bucket	kgf	20.400*
* At power boost Arm	kgf	7.400*
Traveling speed	km/h	5,1/3,0
Swing speed	rpm	9,9
Hydraulics		
Pump Type		Tandem, Axial Piston
Max. flow rate	l/min	2 x 247
Main relief set pressure	kg/cm <sup>2</sup>	350 / 330
Track		
Shoe width	mm	600
Tumbler distance	mm	4.010
Control		
Lever control type		Hydraulic pilot
Lever pattern		SAE
Tank		
Fuel tank	l	500
Hydraulic tank	l	280
Ground pressure	kg/m <sup>2</sup>	0,57