

Kawasaki

70Z^{IV}



Get What You Need

70Z^{IV}

The new **70Z^{IV}** offers everything you ever wanted in a wheel loader: productivity, durability, versatility. The **70Z^{IV}** has it all ... including support you can rely on ... close to home.

More Than 30 Years of Quality Wheel Loaders

Kawasaki Construction Machinery Corp. of America, a division of Kawasaki Heavy Industries, is a leading supplier of a full range of high-quality wheel loaders. With over 30 years of proven performance history, Kawasaki wheel loaders have continuously evolved to bring you the best in equipment and support services, backed by a carefully selected dealer network.

Kawasaki articulated wheel loaders incorporate innovative design features coupled with extensive knowledge and experience gained from real-world applications. Kawasaki pioneered the Z-Link design to provide unmatched utility, high breakout force and efficiency in its machines. Powered by proven, emissions-compliant Cummins diesel engines, durability and serviceability are designed into every Kawasaki loader.

Kawasaki loaders are assembled at the company's modern manufacturing facilities in Newnan, GA. Service and support operations are headquartered in Kennesaw, GA.

A state-of-the-art parts distribution system links dealers with the main parts warehouse, allowing them to order parts directly. Qualified craftsmen rebuild components for all Kawasaki models at our fully equipped rebuild center, making component exchange easier and faster. An independent oil analysis program allows monitoring of critical systems to reduce unscheduled downtime.

The independent dealers that represent and support Kawasaki loaders are experts in their markets and are dedicated to providing you with the best service available. Together, we are committed to making your investment in a Kawasaki loader a sound business decision that will pay dividends for years to come.



In A Heavy-Duty Loader...

Improved Operator Comfort Means Greater Productivity

CAB

- Certified ROPS, FOPS
- Isolation-mounted to reduce vibration
- Doors latch back
- Side windows slide down
- Tinted windshields
- Front & rear wipers and washers

SEAT

- Best seat in the industry
- Six-way adjustable seat, lumbar support
- Heavy-duty suspension
- Side bolsters

CLIMATE CONTROL

- 25,000 BTU air conditioner available
- 40,000 BTU heater standard
- Pressurizer reduces dust
- Touch pad controls



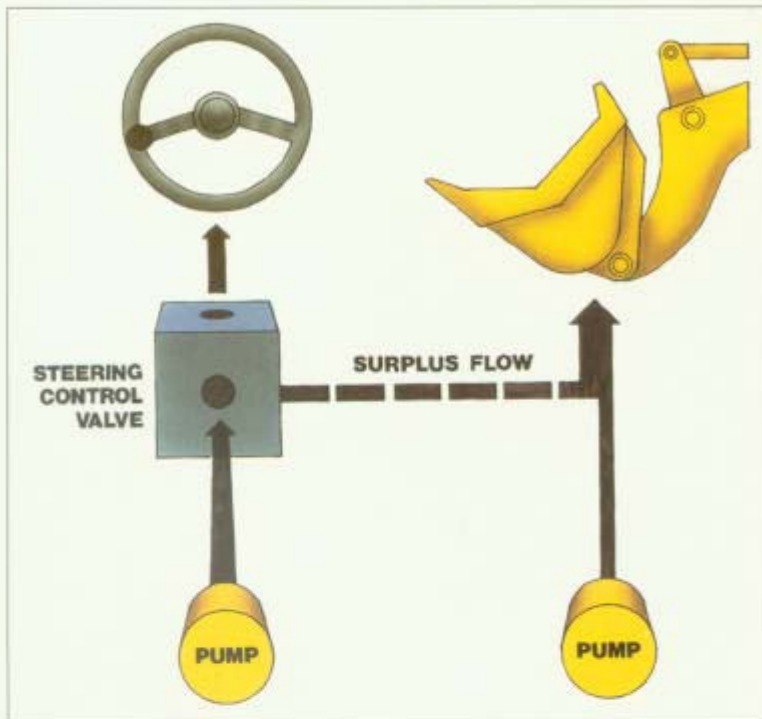
CONTROLS

- Dual, pilot-assisted hydraulic controls—fingertip control
- Single lever control available
- Adjustable wrist rest
- Low-effort steering
- Tilt steering wheel adjusts to the operator's needs
- Single, twist-grip transmission shift lever
- Low profile dash improves visibility
- Gauges include tachometer
- Systems monitored with lights and alarms
- Transmission declutch switch activates left brake pedal as declutch

Kawasaki



Kawasaki Powertrain Co

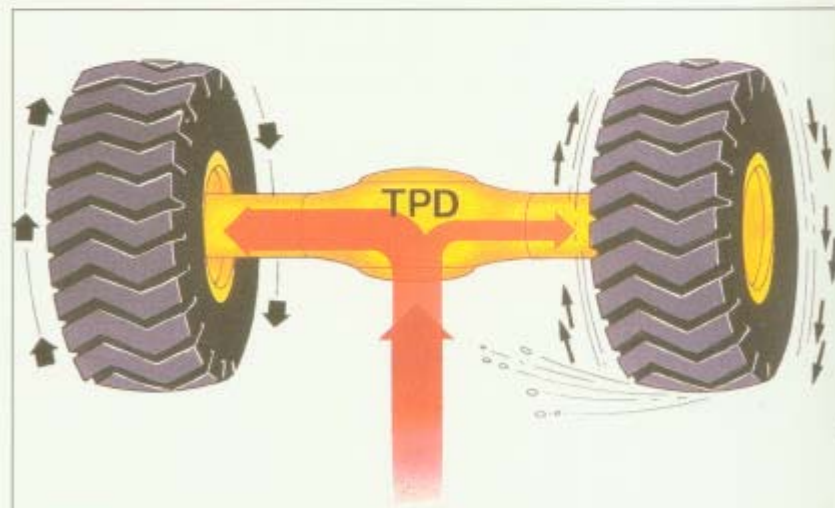


ENGINE

- Cummins B5.9-C
- 160 flywheel horsepower
- High torque, fuel efficient
- Reliable
- Worldwide distribution system

A HYDRAULIC SYSTEM DESIGNED FOR EFFICIENT PERFORMANCE

- Dry, reliable
- Cast iron gear pumps
- Energy efficient system, steering supplements main
- Easy access to two-spool control valve
- Large oil reservoir – (keeps oil cooler)
- Supplemental oil cooler standard



AXLES

- Heavy-duty torque proportioning differentials
- Outboard-mounted, final drives
- Improved rear axle trunnion sealing
- 20.5 x 25 12PR (L2) tires standard
- 23.5 x 25 L3 and radial tires available

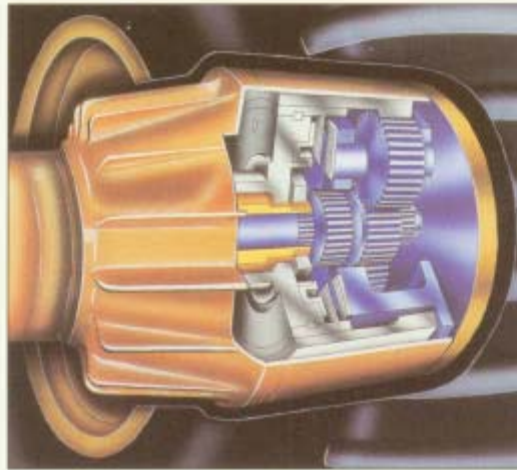
70Z 7AV

Components Offer Built-In Reliability



TRANSMISSION

- Three-speed, countershaft, powershift
- Heavy duty design increases reliability
- Large, standard SAE universal joints
- Single lever control



BRAKES

- Outboard wet disc brakes
- High capacity, dual system for safety
- Long life
- Unique design—mounted to low torque side
- Easy access—mounted directly behind planetaries
- Fewer brake discs needed
- Parking brake meets MSHA requirements

Kawasaki

Kawasaki **70Z** Loaders Are Built

FRAME

- Heavy, full box-section rear chassis
- Large center pins and bearings
- High strength loader tower

LIFT ARMS

- Heaviest in the class
- Z-linkage
- High breakout force

BUCKETS

- Rugged and durable buckets
- Box floor for rigidity
- Easy loading
- Excellent load retention
- Full assortment of edges and teeth
- Bolt-on wear plates standard



For Performance And Durability



Kawasaki Delivers Service and Support... Because You Just Don't Buy a Loader, You Live With It.

SERVICEABILITY

- Hinged radiator grille improves access
- Common key for ignition and vandalism covers
- Engine side covers open wide for better access to engine
- Donaldson & Fleetgard filters—easily accessible
- Remote engine oil drain
- Grease fittings are grouped for efficient lubrication
- Fuseable link protects against electrical surges

SUPPORT

- Economical, effective, "KLEW" oil sampling system
- Factory rebuilt component exchange program includes six month warranty
- Outstanding parts availability
- Extended powertrain warranty available
- Extensive qualified independent distribution network

Kawasaki





Operating Specificat

ENGINE

Make/Model/Fuel Type	Cummins/B5.9-C/Diesel
Type	4-cycle, watercooled, turbocharged after-cooled, direct injection
Net flywheel horsepower	160 HP/2400 RPM
Max Torque	490 lb/ft. @ 1500 RPM
Number of cylinders	6
Bore and stroke	4.02" x 4.72" (102mm x 120mm)
Total displacement	359 in ³ (5883 cm ³)
Alternator	AC24V - 1560w (65amp)
Starting motor	24V - 3.0kw (4 HP)
Battery	12V - 150Ah, 2 units
Governor	All-speed, mechanical type

TORQUE CONVERTER AND TRANSMISSION

Torque converter	3 elements, single stage	
Torque stall ratio	3.65:1	
Main clutches	Wet hydraulic, multi-disk type	
Cooling method	Forced circulation type	
Transmission	Full power shift, 4 forward, 4 reverse with automatic mode (2nd - 4th) with downshift switch for 2nd - 1st downshifting	
Speeds	Forward	1st: 4.7 MPH (7.5 km/hr) 2nd: 7.8 MPH (12.5 km/hr) 3rd: 12.7 MPH (20.5 km/hr) 3rd: 23.0 MPH (37.0 km/hr)
	Reverse	1st: 4.7 MPH (7.5 km/hr) 2nd: 7.8 MPH (12.5 km/hr) 3rd: 12.7 MPH (20.5 km/hr) 3rd: 23.0 MPH (37.0 km/hr)

SERVICE REFILL CAPACITY

LOCATION	CAPACITY:	Gallons	Liters
Engine (coolant)		9.8	(37)
Fuel tank (diesel fuel)		58.1	(220)
Engine (oil pan)		3.7	(14)
Front axle (gear oil)		12.7	(48)
Rear axle (gear oil)		13.5	(51)
Steering box		0.4	(1.5)
Torque converter and transmission (engine oil)		7.9	(30)
Hydraulic system including tank (hydraulic oil)		45.0	(170)
Brake oil tank (engine oil)		0.7	(2.5)

HYDRAULIC AND STEERING SYSTEM

Steering type	Articulated frame steering	
Steering mechanism	Hydraulic power steering unit, mechanical follow up	
Lift (boom) cylinder	Two (2) double-acting piston type: 5.5" x 29.7" (140mm x 754mm)	
Tilt (bucket) cylinder	One (1) double-acting piston type: 6.3" x 19.8" (160mm x 502mm)	
Steering cylinder	Two (2) double-acting piston type: 3.1" x 15.0" (80mm x 380mm)	
Main oil pump	Gear type: 13 GPM @ 1800 RPM (48 LPM @ 1800 RPM)	
Pilot oil pump	Gear type: 8.6 GPM @ 1800 RPM (33 LPM @ 1800 RPM)	
Relief valve set pressure	Loading	3000 psi (210 kg/cm ²)
	Steering	3000 psi (210 kg/cm ²)
HYDRAULIC CYCLE TIME*		
Lifting time (at full load)	6.2 sec.	
Lowering time (empty)	3.1 sec.	
Bucket dumping time	1.2 sec.	
TOTAL	10.5 sec.	

* Measured in accordance with SAE J732C

AXLE SYSTEM


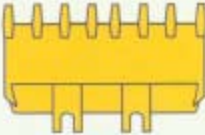
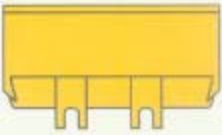
Drive system	4-wheel drive	
Front and rear axle	Full floating banjo type	
Tires	Standard	20.5 x 25-12PR (L-2)
	Optional	20.5 x 25-12PR (L-3) 23.5 x 25-12PR (L-2) (L-2)
Reduction and differential gear	Spiral bevel/gear, 1 stage reduction torque, proportioning type	
Final reduction gear	Outboard mounted, internal planetary gear	
Oscillation angle	±12° (total 24°)	

BRAKE SYSTEM

Service brakes	4 wheel air over hydraulic wet disc brake. Dual circuit.
Parking/Emergency brake	Spring applied air released type. Meets MSHA requirements.

ons and Bucket Data

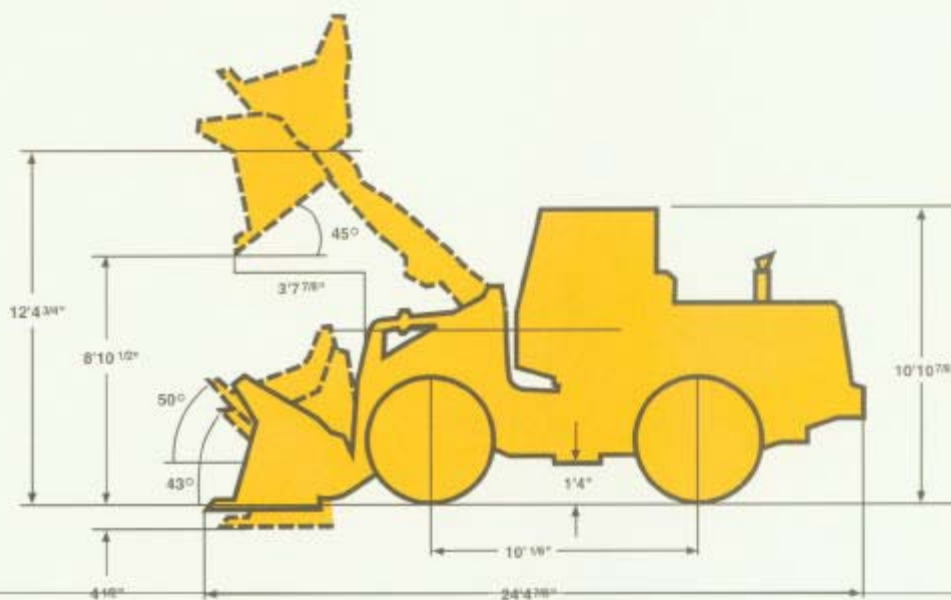


			General Purpose		Material Handling
			With Bolt-on Cutting Edge	With Teeth	With Bolt-on Cutting Edge
					
Capacity	Heaped	yd ³ (m ³)	3.25 (2.5)	3.0 (2.3)	3.5 (2.7)
	Struck	yd ³ (m ³)	2.8 (2.1)	2.6 (2.0)	3.1 (2.4)
Maximum dumping clearance		ft-in (mm)	8'10 1/2" (2705)	8'7 1/8" (2620)	8'8 1/4" (2650)
Dumping reach (to front of bucket edge or tooth)		ft-in (mm)	3'7 1/8" (1115)	3'10 1/2" (1180)	3'10" (1170)
Bucket hinge pin height		ft-in (mm)	12'4 1/4" (3780)	12'4 1/4" (3780)	12'4 1/4" (3780)
Digging depth		ft-in (mm)	4' 1/2" (115)	5' 1/8" (130)	4' 1/2" (115)
Breakout force		lb (kg)	27,775 (12,600)	30,210 (13,700)	25,795 (11,700)
Bucket tilt-back angle	at ground level		43°	43°	43°
	at carry position		50°	50°	50°
Overall	Length	ft-in (mm)	24'4 1/8" (7440)	24'9 1/8" (7565)	24'8" (7520)
	Height	ft-in (mm)	10'10 7/8" (3325)	10'10 1/8" (3325)	10'10 7/8" (3325)
Width (outside tire)		ft-in (mm)	8'5 1/4" (2585)	8'5 1/4" (2585)	8'5 1/4" (2585)
Width (outside bucket)		ft-in (mm)	8'9 1/8" (2670)	8'9 1/8" (2670)	8'9 1/8" (2670)
Wheel base		ft-in (mm)	10' 1/8" (3050)	10' 1/8" (3050)	10' 1/8" (3050)
Minimum turning radius	at outside bucket	ft-in (mm)	19'9 1/4" (6040)	19'11" (6070)	19'10 1/8" (6060)
	at center of outside tire	ft-in (mm)	17'1 1/8" (5215)	17'1 1/8" (5215)	17'1 1/8" (5215)
Minimum ground clearance		ft-in (mm)	1'4" (405)	1'4" (405)	1'4" (405)
Full articulation angle		degree	40°	40°	40°
Operating weight (with ROPS Cab)		lb (kg)	28,530 (12940)	28,330 (12850)	28,640 (12990)
Static tipping load (with ROPS Cab)	Straight	lb (kg)	22,024 (9990)	22,265 (10100)	21,935 (9950)
	Full turn	lb (kg)	18,915 (8580)	19,160 (8690)	18,830 (8540)

WEIGHTS AND DIMENSIONS (SUPPLEMENTAL DATA)

	Weight	Operating	Tipping Load			Overall Width (Outside Tire)	Tread	Vertical Dimensions	Overall Length
			Straight	Full Turn					
ROPS Canopy (Instead of ROPS Cab)	lb (kg)	-705 (-320)	-660 (-300)	-630 (-285)	in (mm)				
Remove ROPS Canopy and Cab (for transport only)	lb (kg)	-1480 (-670)			in (mm)			+1 ¹ / ₂ ' (-325)	
Counterweight	lb (kg)	+500 (+225)	+1200 (+544)	+1020 (+463)	in (mm)				
Tires: 20.5-25-12PR (L-3)	lb (kg)	+300 (+135)	+230 (+105)	+200 (+90)	in (mm)				
23.5-25-12PR (L-2)	lb (kg)	+1610 (+730)	+1235 (+560)	+1060 (+480)	in (mm)	+2 (+50)	+1 ¹ / ₈ ' (+40)	+2 ¹ / ₈ ' (+60)	-2 ¹ / ₈ ' (-55)
23.5-25-12PR (L-2)	lb (kg)	+2030 (+920)	+1555 (+705)	+1335 (+605)	in (mm)	+2 (+50)	+1 ¹ / ₈ ' (+40)	+2 ¹ / ₈ ' (+60)	-2 ¹ / ₈ ' (-55)
23.5-25-12PR (L-3) with 75% CaCl ₂	lb (kg)	+1800 (+815)	+2765 (+1250)	+2370 (+1070)	in (mm)				
Air conditioner	lb (kg)	+220 (+100)	+260 (+120)	+220 (+100)	in (mm)				
Belly Guard (rear frame)	lb (kg)	+130 (+60)	+120 (+55)	+100 (+45)	in (mm)				

Tread 6' 8¹/₄" (2050mm)
 Width (outside tire) 8' 5¹/₄" (2585mm)
 Width (outside bucket) 8' 9¹/₈" (2670mm)
 Equipped with GSC bucket with bolt on cutting edge
 20.5-25-12PR (L-2) Tire and ROPS Cab



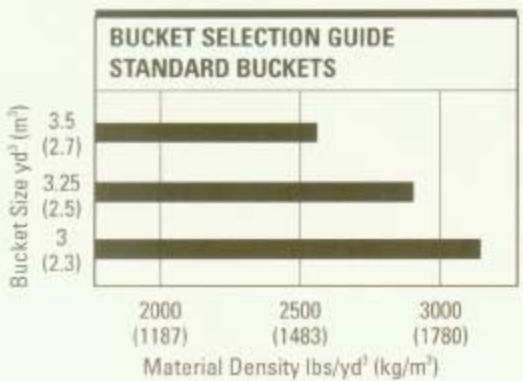
ons and Equipment Data

STANDARD EQUIPMENT

Adjustable steering column Air cleaner (Double element Donaldson) Alarms (audible): air pressure, air master overstroke, brake fluid level, engine oil pressure, transmission control Alarms (visual): air filter, air master overstroke, air pressure, battery discharge, brake fluid level, engine oil pressure, engine water temperature, parking brake, transmission control Alternator (65 amp) Brake line protection (front) Brakes (parking) Brakes (service) oil/air activation, enclosed wet disc, dual system	Bucket control lever (dual, pilot assisted) Bucket leveler Boom kickout Coat hook Cold start aid Cup holder Downshift button Drawbar Electrical system (24 volt) Engine coolant expansion tank Fenders (front and rear) Fan (blower) Fenders (front and rear) Gauges: air pressure, converter oil temperature, engine water temperature, fuel level, hour meter, hydraulic oil level, tachometer	Heater/Pressurizer (40,000 BTU) Hoodsides (hinged) Horn (electric) Indicators: high beam, parking brake, transmission shift monitor Lights: two front, two rear, two stop/tail Linkage (Z-type, sealed) Muffler Neutral safety start Operators manual box Radiator: heavy duty plate fin type Radiator grille, hinged Radio ready Reverse alarm	ROPS cab: enclosed cab with sound suppression, front lights, front and rear wipers and washers, two rear view and two side mirrors, tinted glass, sliding side windows Safety locking bar Seat (super deluxe, adjustable, suspension) Seat belt, retractable, 3' wide Shift control for automatic shift Torque proportioning differential Transmission declutch Vandalism protection Wrist rest, adjustable
--	---	---	---

OPTIONAL EQUIPMENT

Air conditioner (R134) refrigerant Air dryer AM/FM cassette player Belly guard	Bolt-on cutting edge segments Bucket teeth Counterweight Cushion dump valve Emergency steering	Engine pre-cleaner High lift arm Hydraulic system, 3 spool valve Lighting system No spin differential	Quick coupler and attachments ROPS canopy Turn signal with four-way flasher
---	--	---	---



70Z^{IV}



 **Kawasaki**
KAWASAKI CONSTRUCTION MACHINERY
CORP. OF AMERICA

2140 Barrett Park Drive, Suite 101
P.O. Box 1657
Kennesaw, GA 30144
Tel: (770) 499-7000
Fax: (770) 421-6842