

E235SR EVOLUTION



Net flywheel power **116 kW - 158 HP**

Operating weight (max) **24 900 kg**

Bucket capacity **from 0.51 to 0.93 m³**



EVOLVING TECHNOLOGY

Specifications



Tier-2 emissioned engine

Net flywheel power (ISO 14396)116 kW/158 HP
Rated rpm.....2000
Make and model.....MITSUBISHI 6D34-TLU2F
Typediesel 4-stroke, direct injection
turbocharged, intercooler
Displacement5861 cm³
Number of cylinders6
Bore x Stroke104 x 115 mm

Electronic engine rpm control dial type

“Auto-Idling” selector returns engine to minimum rpm when all controls are in neutral position.



Electrical system

Voltage24 V
Alternator35 A
Starter motor5 kW
Standard maintenance-free batteries2
Capacity136 Ah



Hydraulic system

S.H.S. (Smart Hydraulic System) and computerised hydraulic pump delivery for perfect controllability and simultaneity of all movements.

Operating mode selector: H - heavy duty
S - standard
FC - precision jobs

“Power Boost” device

Main pumps:
Two variable delivery axial piston pumps
Pumps automatically revert to zero with controls in neutral
Maximum delivery2 x 210 l/min
Pilot circuit gear type pump
Maximum delivery20 l/min

Maximum operating pressure:

Equipment34.3 MPa
Swing28.5 MPa
Travel34.3 MPa
Power Boost37.7 MPa
Pilot circuit5.0 MPa

Hydraulic cylinders	Number	Bore	Stroke
Lift	2	125 mm	1320 mm
Dipperstick	1	135 mm	1490 mm
Bucket	1	120 mm	1080 mm



Transmission

Typehydrostatic, two-speed
Travel motors2, axial piston type, double displacement
Brakes.....oil bath disc type, automatically applied
and hydraulically released

Final drivesoil bath, planetary reduction
Gradeability (continuous).....70% (35°)
Travel speeds
Lowfrom 0 to 3.3 km/h
Highfrom 0 to 5.3 km/h
“Automatic DownShift” device: to move travel motors to maximum displacement position with selector on “high speed” position when greater traction is required.



Swing

Swing motoraxial piston type
Swing brakeoil bath disc type, automatically applied
and hydraulically released
Final driveoil bath, planetary reduction
Swing Ringgrease bath type
Swing Speed11.0 rpm



Cab and controls

Transparent cab roof.
Standard automatic conditioning.
Controls.....piloted
Two cross path manipulators actuate all equipment movements and upperstructure swing
Two pedals with hand levers control all track movements, counter-rotation included.
A safety lever completely neutralizes the piloting circuit.



Undercarriage

Reinforced track chain with sealed bushings

Rollers:	NLC	LC
Track rollers (each side)	9	9
Carrier rollers (each side)	2	2
Length of track on ground	2390 mm	2590 mm
Gauge	3850 mm	3850 mm
Shoes (mm)	600 - 700 800	600 - 700 800 - 900

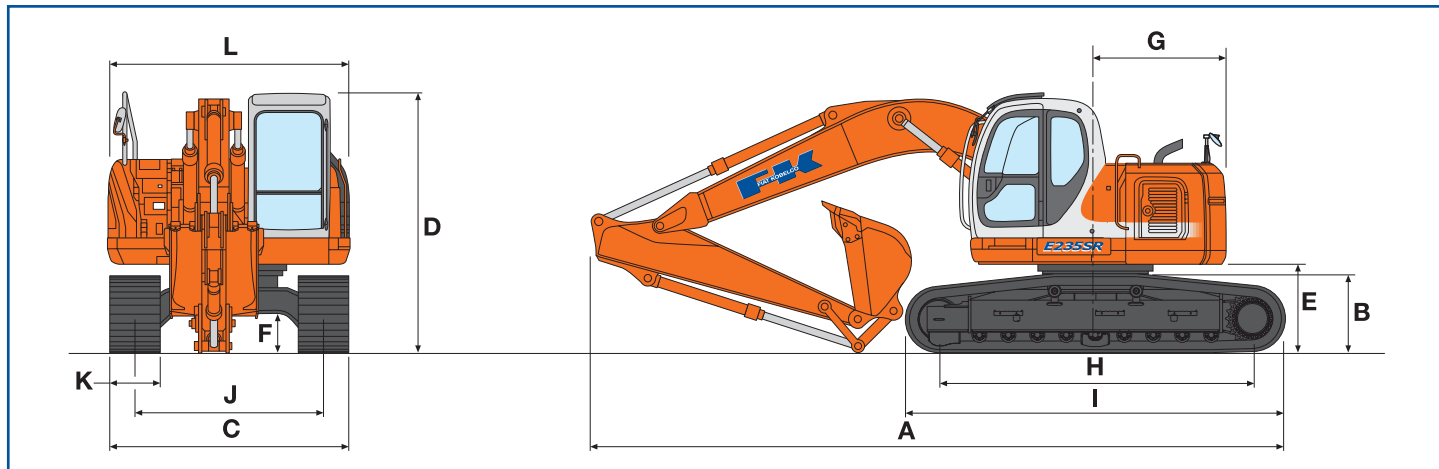


Capacities

Engine litres
Lube oil24.0
Coolant19.0
Fuel tank290.0
Hydraulic system230.0
Swing final drive7.5
Travel final drive (each).....4.7

Monobloc boom

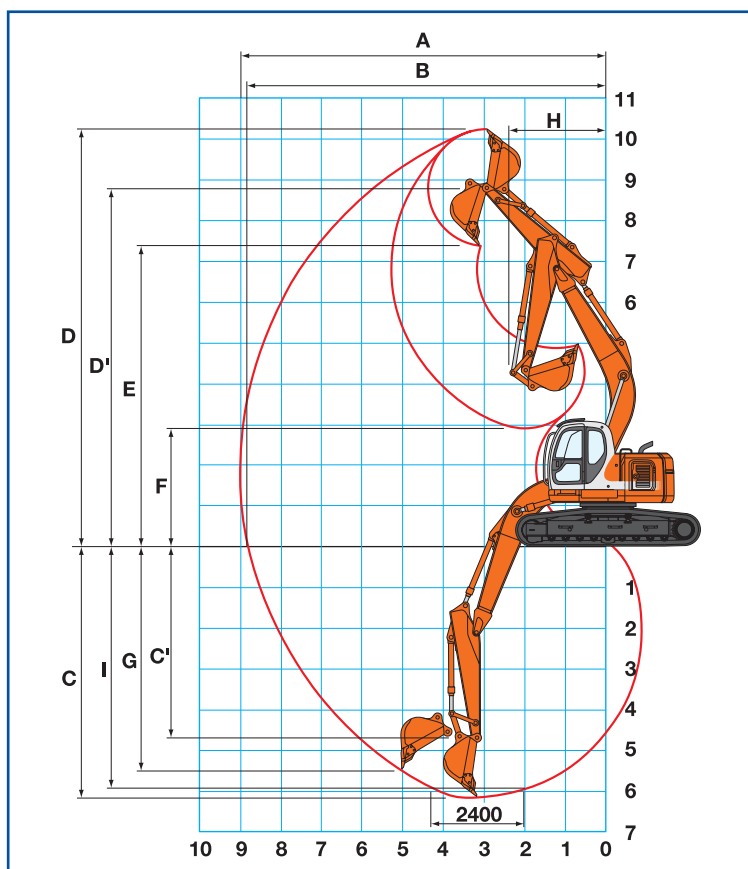
Dimensions (mm) - Operating weights



Versions		A	B	C	D	E	F	G	H	I	J	L
E235SR - NLC	mm	8890	995	2990	3090	1090	455	1680	3850	4655	2390	3000
E235SR - LC	mm	8890	995	3190	3090	1090	455	1680	3850	4655	2590	3000

		E235SR-NLC			E235SR - LC			
K - Shoe width	mm	600	700	800	600	700	800	900
C - Maximum width	mm	2990	3090	3190	3190	3290	3390	3490
Operating weight	kg	23900	24200	24500	24000	24300	24600	24900
Specific ground pressure	bar	0.48	0.42	0.37	0.48	0.42	0.37	0.33

Digging performance



Dipperstick	mm	2940	3300
A	mm	9850	10210
B	mm	9660	10030
C	mm	6700	7100
C'	mm	5260	5660
D	mm	11290	11590
D'	mm	9850	10150
E	mm	8420	8690
F	mm	3220	2980
G	mm	6060	6480
H	mm	1900	2450
I	mm	6520	6930
Breakout force:			
Bucket	daN	14300	14300
Dipperstick	daN	9710	9220
"Power Boost" on			
Bucket	daN	15700	15700
Dipperstick	daN	10700	10100

Buckets

SAE Capacity (m³)	Width (mm)
0,51	710
0,68	950
0,80	1050
0,93	1230

Lifting capacity

(Monobloc boom - 2 940 mm dipperstick)

Values are expressed in kilos



E235SR-NLC

Height	Reach									
	1.5 m		3.0 m		4.5 m		6.0 m		7.5 m	
+ 9,0 m					*3850	*3850				
+ 7,5 m					*4570	*4570	*3950	*3950		
+ 6,0 m					*4980	*4980	*4890	4670		
+ 4,5 m			*7760	*7760	*6250	*6250	*5460	4480	*4750	3020
+ 3,0 m			*12650	*12650	*8090	6700	*6320	4220	5390	2900
+ 1,5 m			*7720	*7720	*9790	6150	*7170	3950	5240	2760
0 m			*8550	*8550	*10670	5820	7310	3760	5130	2660
-1,5 m	*7370	*7370	*11830	11330	*10650	5690	7200	3670	5080	2610
-3,0 m	*11100	*11100	*13920	11500	*9740	5730	*7140	3680		
-4,5 m	*15770	*15770	*10740	*10740	*7660	5920				

E235SR-LC

Height	Reach									
	1.5 m		3.0 m		4.5 m		6.0 m		7.5 m	
+ 9,0 m					*3420	*3420				
+ 7,5 m					*4060	*4060	*3510	*3510		
+ 6,0 m					*4420	*4420	*4300	*4300		
+ 4,5 m			*6930	*6930	*5530	*5530	*4800	*4800	*4220	3320
+ 3,0 m			*11240	*11240	*7150	*7150	*5560	4650	*4740	3190
+ 1,5 m			*6940	*6940	*8640	6850	*6300	4370	*5090	3050
0 m			*7690	*7690	*9410	6500	*6780	4170	5070	2940
-1,5 m	*6610	*6610	*10670	*10670	*9370	6370	*6820	4070	5020	2900
-3,0 m	*10010	*10010	*12250	*12250	*8550	6410	*6240	4090		
-4,5 m	*14260	*14260	*9380	*9380	*6670	6610				

As per ISO 10567 with excavator equipped with bucket. The indicated load is no more than 87% of hydraulic system lift capacity or 75% of static tipping load. Values marked with an asterisk are limited by the hydraulic system.

AT YOUR OWN DEALERSHIP

The information contained in this brochure is intended to be a general nature only. The FIAT KOBELCO company may at any time and from time to time, for technical or other necessary reasons, modify any of the details or specifications of the product described in this brochure. Illustrations do not necessarily show products in standard conditions. The dimensions, weights and capacities shown herein, as well as any conversion data used, are approximate only and are subject to variations within normal manufacturing techniques.

Published by FIAT KOBELCO CONSTRUCTION MACHINERY S.p.A. - <http://www.fiatkobelco.com>
Printed in Italy - LEADER Firenze - Cod. 60086 - INB - 06/04



EVOLVING TECHNOLOGY



FIAT KOBELCO IS A BRAND OF CNH.
CNH: THE TOTAL SOLUTIONS CHOICE FOR YOUR SPECIFIC BUSINESS NEEDS.