

E265 EVOLUTION



Net flywheel power **137 kW - 186 hp**

Maximum operating weight **28 270 kg**

Bucket capacity **0.58 - 1.40 m³**



EVOLVING TECHNOLOGY

E265 *EVOLUTION*

- **Evolution in technology**
- **Evolution in productivity and consumption**
- **Evolution in comfort and safety**
- **Evolution in accessibility and service**
- **Evolution in equipment and versatility**



Engine

New generation TIER 2 CNH engine with great power and low fuel consumption for outstanding productivity
Standard cold start at -15 °C
Optional cold start at -25 °C
E.S.S.C. Engine Speed Sensing Control for complete exploitation of installed hydraulic power



EVOLVING TECHNOLOGY



Hydraulic pumps

Two variable delivery piston pumps with more than average delivery for high operating speeds.
Independent electronic control.



"HIGH SPACE" cab

Roomy, bright, silent, with perfect all-round visibility. Transparent opening roof, automatic conditioner supplied standard.
All controls are within hand reach and in ergonomic positions: more than a living room cab for maximum operator comfort



Monitor

An **E.T.U.** Easy to Use and immediately understandable multi-function monitor. Easy selection of three operating modes
W = Normal
H/M = Heavy with self-learning
A = Optional implements

Specifications



Tier 2 emissioned engine

Net flywheel power (ISO 14396) 137 kW/186 hp
 Governed 2100 rpm
 Make and model CNH F4AE0684L*D101
 Type diesel 4-stroke, direct injection, turbocharged and intercooler
 Displacement 5.9 l
 Number of cylinders 6
 Bore x stroke 102 x 120 mm
 Maximum torque at 1400 rpm 800 Nm

Remote engine oil filter for easy replacement

Electronic engine rpm control, dial type

Auto-Idling selector returns engine to minimum rpm when all controls are in neutral position

-15° outside temperature start as standard equipment (-25° optional)

The engine conforms to 97/68/CE STAGE 2 Standards



Electrical system

Voltage 24 V
 Alternator 70 A
 Starter motor 4 kW
 Standard maintenance-free batteries 2
 Capacity 160 Ah



Hydraulic system

New S.H.S. (Smart Hydraulic System) for outstanding controllability and complete simultaneous movements

New generation **A.I. (Artificial Intelligence)** on-board computer

A.P.S. (Automatic Priority System device)

Computerized pumps delivery and main control valve actuation in relation to manipulators stroke and working pressure demand

E.S.S.C. (Engine Speed Sensing Control device) for total installed hydraulic power exploitation

High definition E.T.U. (EASY TO USE) multi-function monitor

incorporating:

- Maintenance programme
- Self Diagnosis System
- Operating Data Storage (engine rpm/operating pressure and the like)

M.W.S. Mechatronic Work Selector:

- **Standard Mode (W)** - Standard operating mode
- **Heavy/Mechatronic Mode (H/M)** - Maximum hydraulic power for top productivity. In this mode, the unit “learns” the type of operation being completed after 2 cycles and automatically selects maximum efficiency/speed and operating precision with the **A.P.S. (Automatic Priority System) device**
- **Attachments Mode (A)** - Possibility of selecting and storing delivery for supplementary tooling from the operator compartment

Continuous untimed insertion **Power Boost Device**. Continuous insertion of the device when selected ensures maximum diggability and productivity in the toughest applications.

Standard double pumps flow device

Pipe pressure discharge push button to facilitate tooling changeover without piping oil leakage.

Hammer/crusher two-directional system

Main pumps:

Two variable delivery pumps with electronic delivery adjustment.

Pumps automatically revert to zero delivery with controls in neutral.

Maximum delivery 2 x 235 l/min

Piloting circuit gear type pump

Maximum delivery 21 l/min

Maximum operating pressure:

Equipment/travel 34.3 MPa

Swing 28.5 MPa

Power Boost 37.7 MPa

Hydraulic cylinders double effect

- Lift (2) - bore x stroke 135 x 1235 mm

- Penetration (1) - bore x stroke 140 x 1635 mm

- Bucket (1) - bore x stroke 125 x 1200 mm

- Positioning (only triple articulation)

bore x stroke 150 x 1200 mm

Independent hammer/positioning cylinder control



Transmission

Type hydrostatic, two-speed

Travel motors 2, axial pistons type, double displacement

Brakes automatic discs type

Final drive oil bath, planetary reduction

Gradeability (continuous) 70% (35°)

Travel speeds:

low from 0 to 4.0 km/h

high from 0 to 6.0 km/h

Automatic Down Shift device: to move travel motors to maximum displacement position with selector on “speed” position when greater traction is required.



Swing

Swing motor axial piston type

Swing brake automatic discs type

Final drive oil bath, planetary reduction

Swing ring grease bath type

Swing speed 11.0 rpm



Cab and controls

Transparent opening roof.

Standard automatic conditioning.

Controls piloted

Two cross travel levers actuate all equipment movements and superstructure swing.

Two pedals with hand levers control all track movements, counter-rotation included.

A safety lever completely neutralizes the piloting circuit



Undercarriage

X-frame undercarriage design

Reinforced track chain with sealed bushings.

	E265EL	E265LC
Track rollers (each side)	9	9
Carrier rollers (each side)	2	2
Length of track on ground (mm)	3846	3846
Gauge (mm)	2390	2590
Shoes (mm)	600-700 800-900	600-700 800-900



Capacities

Engine litres

Lube oil 17.0

Coolant 23.0

Fuel tank 447.0

Hydraulic reservoir 280.0

Triple articulation

Dimensions (mm) - Operating weights



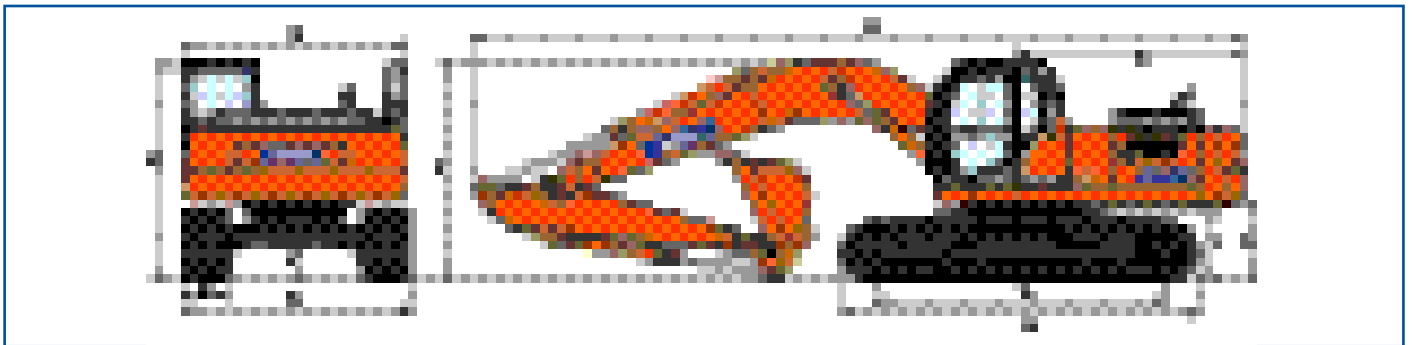
Versions	A	B	C	D	E(*)	F(*)	G	H	I	L
E385EL	3846	4660	1118	2950	(1) 10220	(1) 3220	2950	3050	970	488
					(2) 10180	(2) 3170				
					(3) 10680	(3) 3050				
					(4) 10150	(4) 3190				
E265LC	3846	4660	1118	2950	(1) 10220	(1) 3220	2950	3050	970	488
					(2) 10180	(2) 3170				
					(3) 10680	(3) 3050				
					(4) 10150	(4) 3190				

(*) Dipperstick: (1) 2160 mm, (2) 2500 mm, (3) 2980 mm, (4) 3660 mm

		E265EL				E265LC			
M - Shoe width	mm	600	700	800	900	600	700	800	900
N - maximum width	mm	2990	3090	3190	3290	3190	3290	3390	3490
Operating weight	kg	27220	27550	27880	28210	27280	27610	27940	28270
Specific ground pressure	bar	0.58	0.50	0.44	0.40	0.58	0.50	0.45	0.40

Monobloc

Dimensions (mm) - Operating weights

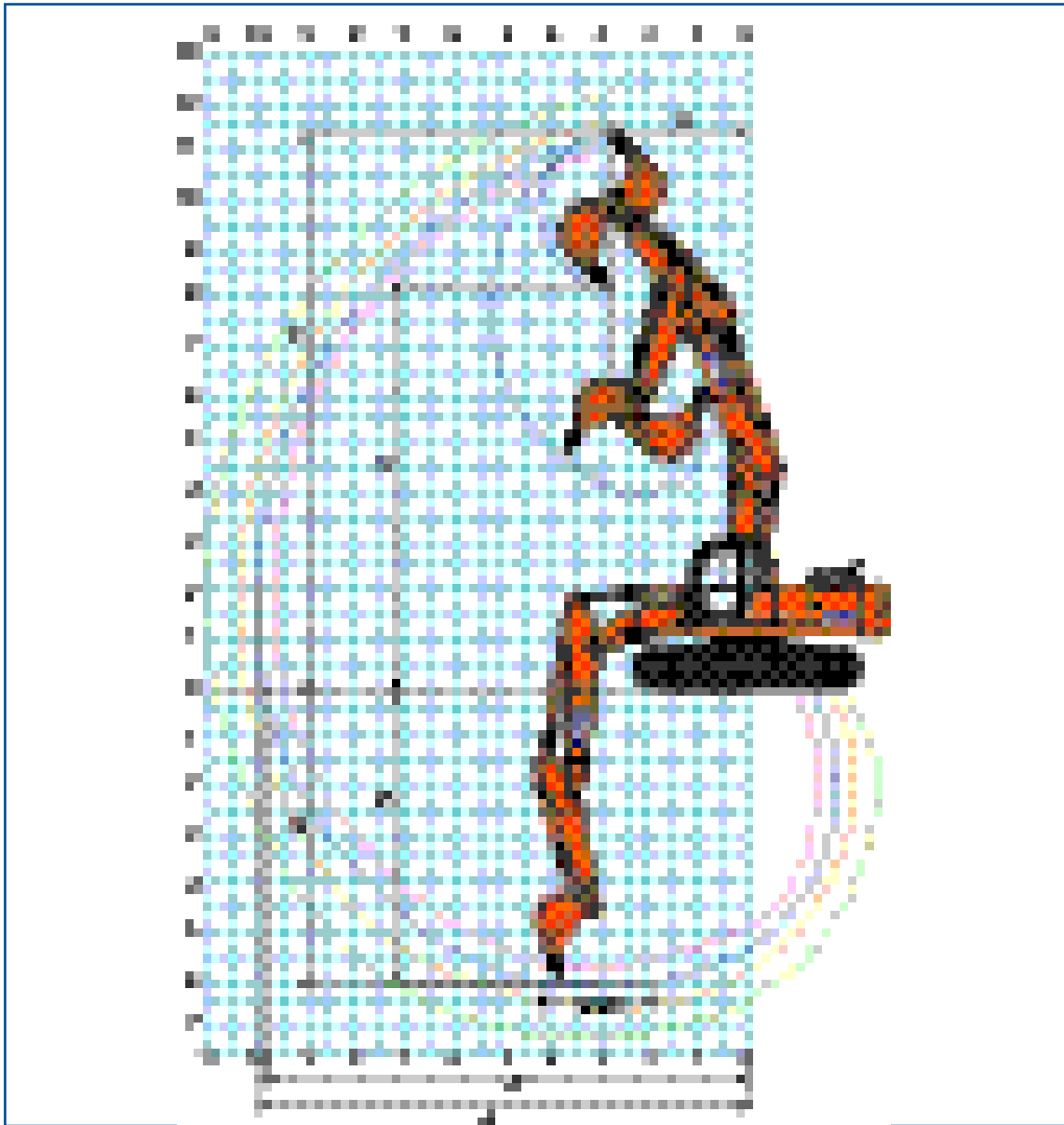


Versions	A	B	C	D	E(*)	F(*)	G	H	I	L
E265EL	3846	4660	1118	2950	(1) 10200	(1) 3390	2950	3050	970	488
					(2) 10170	(2) 3320				
					(3) 10120	(3) 3140				
					(4) 10100	(4) 3140				
E265LC	3846	4660	1118	2950	(1) 10200	(1) 3390	2950	3050	970	488
					(2) 10170	(2) 3320				
					(3) 10120	(3) 3140				
					(4) 10100	(4) 3140				

(*) Dipperstick: (1) 2160 mm, (2) 2500 mm, (3) 2980 mm, (4) 3660 mm

		E265EL				E265LC			
M - Shoe width	mm	600	700	800	900	600	700	800	900
N - maximum width	mm	2990	3090	3190	3290	3190	3290	3390	3490
Operating weight	kg	26320	26650	26980	27310	26380	26710	27040	27370
Specific ground pressure	bar	0.56	0.49	0.43	0.39	0.56	0.49	0.43	0.39





Digging performance (Triple Articulation Version)



		●	●	●	●
Dipperstick	mm	2160	2500	2980	3660
A	mm	9733	10017	10445	11118
A'	mm	9553	9842	10277	10960
B	mm	5777	6093	6554	7239
B'	mm	5685	5986	6453	7147
C	mm	11098	11302	11633	12218
D	mm	8058	8266	8595	9182
E	mm	2882	2715	2477	2463
Breakout force					
Bucket	daN	17200	17200	17200	17200
Dipperstick	daN	17500	15700	12600	10700
With "Power Boost" on:					
Bucket	daN	19000	19000	19000	19000
Dipperstick	daN	19400	17400	14200	12200

Digging performance (Monobloc Version)



					
Dipperstick	mm	2160	2500	2980	3660
A	mm	9647	9919	10335	11001
A'	mm	9465	9742	10166	10842
B	mm	6168	6508	6988	7668
B'	mm	5953	6305	6805	7520
C	mm	9579	9668	9813	10218
D	mm	6828	6818	6990	7369
E	mm	3964	3934	3985	3916
Breakout force					
Bucket	daN	17200	17200	17200	17200
Dipperstick	daN	17500	15700	12600	10700
With "Power Boost" on:					
Bucket	daN	19000	19000	19000	19000
Dipperstick	daN	19400	17400	14200	12200

E265 Evolution - Lifting capacity

EL Version

Value are expressed in tonnes.

	Radius of load														Reach m
	1.5 m		3.0 m		4.5 m		6.0 m		7.5 m		9.0 m		At max reach		
	Front	Side	Front	Side	Front	Side	Front	Side	Front	Side	Front	Side	Front	Side	

Monobloc - Dipperstick 2 160 mm

Height	1.5 m		3.0 m		4.5 m		6.0 m		7.5 m		9.0 m		At max reach		Reach m
+9.0m															
+7.5m							5.4 *	5.4 *			5.4 *	5.4 *			6.03
+6.0m							5.4 *	5.4 *			5.5 *	5.2 *			7.17
+4.5m					7.3 *	7.3 *	6.1 *	6.1 *	5.6 *	4.7	5.6 *	4.3			7.86
+3.0m					9.6 *	9.5	7.2 *	6.3	6.1 *	4.5	5.8 *	3.9			8.22
+1.5m					11.4 *	8.9	8.2 *	5.9	6.6	4.3	6.1	3.7			8.30
0m					12.3 *	8.6	8.8 *	5.7	6.9 *	4.2	6.2	3.8			8.09
-1.5m			12.8 *	12.8 *	12.3 *	8.6	9.0 *	5.7	6.9	4.2	6.8	4.1			7.58
-3.0m			16.1 *	16.1 *	11.5 *	8.7	8.6 *	5.7			7.5 *	5.0			6.70
-4.5m			13.2 *	13.2 *	9.5 *	9.1					8.0 *	7.2			5.26

Triple articulation - Dipperstick 2 160 mm

Height	1.5 m		3.0 m		4.5 m		6.0 m		7.5 m		9.0 m		At max reach		Reach m
+9.0m											6.4 *	6.4 *			4.28
+7.5m					5.8 *	5.8 *	4.7 *	4.7 *			4.7 *	4.7 *			6.17
+6.0m					6.1 *	6.1 *	4.7 *	4.7 *			4.0 *	4.0 *			7.29
+4.5m					7.2 *	7.2 *	5.1 *	5.1 *	3.9 *	3.9 *	3.7 *	3.7 *			7.97
+3.0m					9.5 *	9.4 *	5.7 *	5.7 *	4.1 *	4.1 *	3.6 *	3.6 *			8.33
+1.5m					12.1 *	8.6	6.5 *	5.8	4.4 *	4.2	3.7 *	3.6			8.40
0m					11.7 *	8.3	7.2 *	5.6	4.6 *	4.1	4.0 *	3.7			8.20
-1.5m					10.5 *	8.3	7.6 *	5.5	4.8 *	4.1	4.5 *	4.0			7.70
-3.0m					8.3 *	8.3 *	6.4 *	5.7			5.2 *	4.8			6.83
-4.5m															

Monobloc - Dipperstick 2 500 mm

Height	1.5 m		3.0 m		4.5 m		6.0 m		7.5 m		9.0 m		At max reach		Reach m
+9.0m															
+7.5m											5.0 *	5.0 *			6.56
+6.0m									5.1 *	4.8	4.9 *	4.7			7.62
+4.5m							5.8 *	5.8 *	5.3 *	4.7	5.0 *	4.0			8.27
+3.0m					9.0 *	9.0 *	6.8 *	6.4	5.9 *	4.6	5.3 *	3.7			8.61
+1.5m					10.3 *	9.1	7.9 *	6.1	6.4 *	4.4	5.7	3.5			8.68
0m			7.1 *	7.1 *	12.2 *	8.7	8.7 *	5.8	6.9 *	4.3	5.8	3.6			8.49
-1.5m	8.2 *	8.2 *	12.0 *	12.0 *	12.4 *	8.6	9.1 *	5.7	6.9	4.2	6.3	3.9			8.01
-3.0m	13.0 *	13.0 *	17.1 *	17.1 *	11.9 *	8.7	8.8 *	5.7			7.1 *	4.5			7.18
-4.5m			14.6 *	14.6 *	10.3 *	9.0					7.7 *	6.1			5.86

Triple articulation - Dipperstick 2 500 mm

Height	1.5 m		3.0 m		4.5 m		6.0 m		7.5 m		9.0 m		At max reach		Reach m
+9.0m					5.7 *	5.7 *					5.4 *	5.4 *			5.02
+7.5m					5.5 *	5.5 *	4.5 *	4.5 *			4.1 *	4.1 *			6.70
+6.0m					5.8 *	5.8 *	4.5 *	4.5 *	3.7 *	3.7 *	3.6 *	3.6 *			7.74
+4.5m			10.5 *	10.5 *	6.7 *	6.7 *	4.9 *	4.9 *	3.8 *	3.8 *	3.4 *	3.4 *			8.39
+3.0m					8.7 *	8.7 *	5.5 *	5.5 *	4.0 *	4.0 *	3.3 *	3.3 *			8.73
+1.5m					12.1 *	8.9	6.3 *	5.9	4.3 *	4.3 *	3.4 *	3.4 *			8.80
0m					12.0 *	8.5	7.1 *	5.7	4.6 *	4.2	3.6 *	3.4			8.60
-1.5m			11.4 *	11.4 *	11.1 *	8.4	7.6 *	5.6	4.8 *	4.1	4.1 *	3.7			8.60
-3.0m					9.2 *	8.6	7.1 *	5.6			5.0 *	4.3			8.13
-4.5m															

As per ISO 10567 with excavator equipped with bucket. The indicated load is no more than 87% of hydraulic system lift capacity or 75% of static tipping load. Value marked with an asterisc are limited by the hydraulic system.

E265 Evolution - Lifting capacity

EL Version

Value are expressed in tonnes.

	Radius of load														Reach m
	1.5 m		3.0 m		4.5 m		6.0 m		7.5 m		9.0 m		At max reach		
	Front	Side	Front	Side	Front	Side	Front	Side	Front	Side	Front	Side	Front	Side	

Monobloc - Dipperstick 2 980 mm

Height	1.5 m		3.0 m		4.5 m		6.0 m		7.5 m		9.0 m		At max reach		Reach m
+7.5m													3.7 *	3.7 *	7.10
+6.0m									4.5 *	4.5 *			3.6 *	3.6 *	8.09
+4.5m							5.2 *	5.2 *	4.9 *	4.7			3.6 *	3.6 *	8.70
+3.0m			13.1 *	13.1 *	8.1 *	8.1 *	6.3 *	6.3 *	5.4 *	4.5	3.9 *	3.4	3.8 *	3.3	9.03
+1.5m			6.6 *	6.6 *	10.3 *	9.1	7.4 *	6.0	6.1 *	4.3	4.7 *	3.3	4.1 *	3.2	9.10
0m			8.1 *	8.1 *	11.7 *	8.7	8.4 *	5.7	6.6 *	4.2			4.7 *	3.2	8.91
-1.5m	7.6 *	7.6 *	11.5 *	11.5 *	12.2 *	8.5	8.9 *	5.6	6.8	4.1			5.7	3.5	8.45
-3.0m	11.4 *	11.4 *	16.1 *	16.1 *	12.0 *	8.5	8.2 *	5.6	6.8 *	4.1			6.6	4.0	7.68
-4.5m	15.8 *	15.8 *	15.6 *	15.6 *	10.8 *	8.7	7.9 *	5.7					7.2 *	5.2	6.46
-6.0m													9.1 *	9.1 *	4.46

Triple articulation - Dipperstick 2 980 mm

Height	1.5 m		3.0 m		4.5 m		6.0 m		7.5 m		9.0 m		At max reach		Reach m
+9.0m					5.3 *	5.3 *							4.1 *	4.1 *	5.74
+7.5m							4.1 *	4.1 *					3.6 *	3.6 *	7.25
+6.0m					5.4 *	5.4 *	4.2 *	4.2 *	3.4 *	3.4 *			3.1 *	3.1 *	8.22
+4.5m			8.8 *	8.8 *	6.1 *	6.1 *	4.5 *	4.5 *	3.5 *	3.5 *			2.9 *	2.9 *	8.83
+3.0m			16.3 *	16.3 *	7.8 *	7.8 *	5.1 *	5.1 *	3.7 *	3.7 *	2.9 *	2.9 *	2.9 *	2.9 *	9.15
+1.5m			6.1 *	6.1 *	10.7 *	8.9	5.9 *	5.9 *	4.0 *	4.0 *	3.1 *	3.1 *	2.9 *	2.9 *	9.22
0m			7.5 *	7.5 *	12.0 *	8.4	6.7 *	5.6	4.3 *	4.1	3.2 *	3.1	3.1 *	3.1 *	9.03
-1.5m			10.9 *	10.9 *	11.4 *	8.3	7.4 *	5.5	4.6 *	4.0			3.5 *	3.3	8.58
-3.0m			12.8 *	12.8 *	9.8 *	8.4	7.4 *	5.5	4.6 *	4.0			4.2 *	3.8	7.82
-4.5m															

Monobloc - Dipperstick 3 660 mm

Height	1.5 m		3.0 m		4.5 m		6.0 m		7.5 m		9.0 m		At max reach		Reach m
+7.5m									3.6 *	3.6 *			2.6 *	2.6 *	7.98
+6.0m									3.9 *	3.9 *			2.5 *	2.5 *	8.87
+4.5m									4.3 *	4.3 *	3.8 *	3.5	2.5 *	2.5 *	9.43
+3.0m			10.1 *	10.1 *	6.9 *	6.9 *	5.6 *	5.6 *	4.9 *	4.6	4.6 *	3.4	2.6 *	2.6 *	9.73
+1.5m			10.3 *	10.3 *	9.3 *	9.3 *	6.9 *	6.2 *	5.7 *	4.4	5.0 *	3.3	2.8 *	2.8 *	9.80
0m	3.7 *	3.7 *	8.5 *	8.5 *	10.3 *	8.8	8.0	5.8	6.3 *	4.2	5.2	3.2	3.1 *	2.9	9.62
-1.5m	6.4 *	6.4 *	10.5 *	10.5 *	12.1 *	8.5	8.7 *	5.6	6.8	4.1	4.9 *	3.1	3.7 *	3.0	9.20
-3.0m	9.4 *	9.4 *	13.7 *	13.7 *	12.2 *	8.5	8.9 *	5.5	6.7	4.0			4.7 *	3.4	8.50
-4.5m	12.8 *	12.8 *	17.0 *	17.0 *	11.5	8.6	8.4 *	5.6					6.4 *	4.2	7.42
-6.0m			13.9 *	13.9 *	9.6 *	8.9							7.1 *	6.2	5.77

Triple articulation - Dipperstick 3 660 mm

Height	1.5 m		3.0 m		4.5 m		6.0 m		7.5 m		9.0 m		At max reach		Reach m
+10.5m					4.0 *	4.0 *							3.6 *	3.6 *	4.70
+9.0m							3.9 *	3.9 *					2.9 *	2.9 *	6.81
+7.5m							3.8 *	3.8 *	3.2 *	3.2 *			2.6 *	2.6 *	8.12
+6.0m							3.9 *	3.9 *	3.2 *	3.2 *			2.5 *	2.5 *	9.00
+4.5m			5.5 *	5.5 *	4.2 *	4.2 *	3.3 *	3.3 *	2.7 *	2.7 *	2.5 *	2.5 *	9.56		
+3.0m			11.6 *	11.6 *	6.7 *	6.7 *	4.7 *	4.7 *	3.5 *	3.5 *	2.8 *	2.8 *	2.5 *	2.5 *	9.86
+1.5m			10.0 *	10.0 *	9.2 *	9.2 *	5.4 *	5.4 *	3.8 *	3.8 *	2.9 *	2.9 *	2.5 *	2.5 *	9.92
0m	3.3 *	3.3 *	8.1 *	8.1 *	12.0 *	8.6	6.3 *	5.7	4.1 *	4.1	3.0 *	3.0 *	2.6 *	2.6 *	9.75
-1.5m	6.0 *	6.0 *	9.9 *	9.9 *	11.8 *	8.3	7.1 *	5.5	4.4 *	4.0	3.1 *	3.1	2.9 *	2.9	9.33
-3.0m			13.2 *	13.2 *	10.7 *	8.4	7.6 *	5.5	4.6 *	4.0			3.4 *	3.3	8.63
-4.5m					8.5 *	8.5 *	6.4 *	5.6	4.3 *	4.1			4.2 *	4.0	7.58

As per ISO 10567 with excavator equipped with bucket. The indicated load is no more than 87% of hydraulic system lift capacity or 75% of static tipping load. Value marked with an asterisk are limited by the hydraulic system.

E265 Evolution - Lifting capacity

LC Version

Value are expressed in tonnes.

	Radius of load														Reach m
	1.5 m		3.0 m		4.5 m		6.0 m		7.5 m		9.0 m		At max reach		
	Front	Side	Front	Side	Front	Side	Front	Side	Front	Side	Front	Side	Front	Side	

Monobloc - Dipperstick 2 160 mm

Height	1.5 m		3.0 m		4.5 m		6.0 m		7.5 m		9.0 m		At max reach		Reach m
+9.0m															
+7.5m							5.4 *	5.4 *					5.4 *	5.4 *	6.03
+6m							5.4 *	5.4 *					5.5 *	5.5 *	7.17
+4.5m					7.3 *	7.3 *	6.1 *	6.1 *	5.6 *	5.1			5.6 *	4.7	7.86
+3m					9.6 *	9.6 *	7.2 *	6.9	6.1 *	4.9			5.8 *	4.3	8.22
+1.5m					11.4 *	9.8	8.2 *	6.5	6.6 *	4.7			6.1	4.1	8.30
0m					12.3 *	9.5	8.8 *	6.3	6.9	4.6			6.2	4.2	8.09
-1.5m			12.8 *	12.8 *	12.3 *	9.5	9.0 *	6.2	6.9	4.6			6.8	4.5	7.58
-3m			16.1 *	16.1 *	11.5 *	9.7	8.6 *	6.3					7.5 *	5.4	6.70
-4.5m			13.2 *	13.2 *	9.5 *	9.5 *							8.0 *	7.9	5.26

Triple articulation - Dipperstick 2 160 mm

Height	1.5 m		3.0 m		4.5 m		6.0 m		7.5 m		9.0 m		At max reach		Reach m
+9.0m													6.4 *	6.4 *	4.28
+7.5m					5.8 *	5.8 *	4.7 *	4.7 *					4.7 *	4.7 *	6.17
+6.0m					6.1 *	6.1 *	4.7 *	4.7 *					4.0 *	4.0 *	7.29
+4.5m					7.2 *	7.2 *	5.1 *	5.1 *	3.9 *	3.9 *			3.7 *	3.7 *	7.97
+3.0m					9.5 *	9.5 *	5.7 *	5.7 *	4.1 *	4.1 *			3.6 *	3.6 *	8.33
+1.5m					12.1 *	9.6	6.5 *	6.4	4.4 *	4.4 *			3.7 *	3.7 *	8.40
0m					11.7 *	9.3	7.2 *	6.2	4.6 *	4.5			4.0 *	4.0 *	8.20
-1.5m					10.5 *	9.3	7.6 *	6.1	4.8 *	4.5			4.5 *	4.4	7.70
-3.0m					8.3 *	8.3 *	6.4 *	6.2					5.2 *	5.2 *	6.83
-4.5m															

Monobloc - Dipperstick 2 500 mm

Height	1.5 m		3.0 m		4.5 m		6.0 m		7.5 m		9.0 m		At max reach		Reach m
+9.0m															
+7.5m													5.0 *	5.0 *	6.56
+6.0m									5.1 *	5.1 *			4.9 *	4.9 *	7.62
+4.5m							5.8 *	5.8 *	5.3 *	5.2			5.0 *	4.4	8.27
+3.0m					9.0 *	9.0 *	6.8 *	6.8 *	5.9 *	5.0			5.3 *	4.0	8.61
+1.5m					10.3 *	10.1	7.9 *	6.6	6.4 *	4.8			5.7	3.9	8.68
0m			7.1 *	7.1 *	12.2 *	9.7	8.7 *	6.4	6.9 *	4.7			5.8	3.9	8.49
-1.5m	8.2 *	8.2 *	12.0 *	12.0 *	12.4 *	9.6	9.1 *	6.3	6.9	4.6			6.3	4.2	8.01
-3.0m	13.0 *	13.0 *	17.1 *	17.1 *	11.9 *	9.7	8.8 *	6.3					7.1 *	4.9	7.18
-4.5m			14.6 *	14.6 *	10.2 *	9.9							7.7 *	6.7	5.86

Triple articulation - Dipperstick 2 500 mm

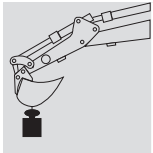
Height	1.5 m		3.0 m		4.5 m		6.0 m		7.5 m		9.0 m		At max reach		Reach m
+9.0m					5.7 *	5.7 *							5.4 *	5.4 *	5.02
+7.5m					5.5 *	5.5 *	4.5 *	4.5 *					4.1 *	4.1 *	6.70
+6.0m					5.8 *	5.8 *	4.5 *	4.5 *	3.7 *	3.7 *			3.6 *	3.6 *	7.74
+4.5m			10.5 *	10.5 *	6.7 *	6.7 *	4.9 *	4.9 *	3.8 *	3.8 *			3.4 *	3.4 *	8.39
+3.0m					8.7 *	8.7 *	5.5 *	5.5 *	4.0 *	4.0 *			3.3 *	3.3 *	8.73
+1.5m					12.1 *	9.8	6.3 *	6.3 *	4.3 *	4.3 *			3.4 *	3.4 *	8.80
0m					12.0 *	9.4	7.1 *	6.1	4.6 *	4.6 *			3.6 *	3.6 *	8.60
-1.5m			11.4 *	11.4 *	11.0 *	9.4	7.6 *	6.2	4.8 *	4.5			4.1 *	4.1	8.60
-3.0m					9.2 *	9.2 *	7.1 *	6.2					5.0 *	4.8	8.13
-4.5m															

As per ISO 10567 with excavator equipped with bucket. The indicated load is no more than 87% of hydraulic system lift capacity or 75% of static tipping load. Value marked with an asterisc are limited by the hydraulic system.

E265 Evolution - Lifting capacity

LC Version

Value are expressed in tonnes.



		Radius of load														Reach m
		1.5 m		3.0 m		4.5 m		6.0 m		7.5 m		9.0 m		At max reach		
		Front	Side	Front	Side	Front	Side	Front	Side	Front	Side	Front	Side	Front	Side	

Monobloc - Dipperstick 2 980 mm

Height																
+7.5m														3.7 *	3.7 *	7.10
+6.0m									4.5 *	4.5 *				3.6 *	3.6 *	8.09
+4.5m								5.2 *	5.2 *	4.9 *	4.9 *			3.6 *	3.6 *	8.70
+3.0m								6.3 *	6.3 *	5.4 *	5.0	3.9 *	3.7	3.8 *	3.7	9.03
+1.5m								7.4 *	6.6	6.1 *	4.7	4.7 *	3.6	4.1 *	3.5	9.10
0m								8.4 *	6.3	6.6 *	4.6			4.7 *	3.6	8.91
-1.5m	7.6 *	7.6 *	11.5 *	11.5 *	12.2 *	9.4	8.9 *	6.2	6.8	4.5				5.7 *	3.8	8.45
-3.0m	11.4 *	11.4 *	16.1 *	16.1 *	12.0 *	9.5	8.8 *	6.1	6.8 *	4.5				6.6 *	4.4	7.68
-4.5m	15.8 *	15.8 *	15.6 *	15.6 *	10.8 *	9.7	7.9 *	6.3	0 *	0 *				7.2 *	5.7	6.46
-6.0m														9.1 *	9.1 *	4.46

Triple articulation - Dipperstick 2 980 mm

Height																	
+9.0m					5.3 *	5.3 *								4.1 *	4.1 *	5.74	
+7.5m							4.1 *	4.1 *						3.6 *	3.6 *	7.25	
+6.0m					5.4 *	5.4 *	4.2 *	4.2 *	3.4 *	3.4 *				3.1 *	3.1 *	8.22	
+4.5m					8.8 *	8.8 *	6.1 *	6.1 *	4.5 *	4.5 *	3.5 *	3.5 *		2.9 *	2.9 *	8.83	
+3.0m					16.3 *	16.3 *	7.8 *	7.8 *	5.1 *	5.1 *	3.7 *	3.7 *	2.9 *	2.9 *	2.9 *	2.9 *	9.15
+1.5m					6.1 *	6.1 *	10.7 *	9.9	5.9 *	5.9 *	4.0 *	4.0 *	3.1 *	3.1 *	2.9 *	2.9 *	9.22
0m					7.5 *	7.5 *	12.0 *	9.4	6.7 *	6.2 *	4.3 *	4.3 *	3.2 *	3.2 *	3.1 *	3.1 *	9.03
-1.5m					10.9 *	10.9 *	11.4 *	9.2	7.4 *	6.1	4.6 *	4.4			3.5 *	3.5 *	8.58
-3.0m					12.8 *	12.8 *	9.8 *	9.4	7.4 *	6.1	4.6 *	4.4			4.2 *	4.2 *	7.82
-4.5m																	

Monobloc - Dipperstick 3 660 mm

Height																	
+7.5m									3.6 *	3.6 *				2.6 *	2.6 *	7.98	
+6.0m									3.9 *	3.9 *				2.5 *	2.5 *	8.87	
+4.5m									4.3 *	4.3 *	3.8 *	3.8 *	2.5 *	2.5 *	2.5 *	2.5 *	9.43
+3.0m					10.1 *	10.1 *	6.9 *	6.9 *	5.6 *	5.6 *	4.9 *	4.9 *	4.6 *	3.7	2.6 *	2.6 *	9.73
+1.5m					10.3 *	10.3 *	9.3 *	9.3 *	6.9 *	6.7	5.7 *	4.8	5.0 *	3.6	2.8 *	2.8 *	9.80
0m	3.7 *	3.7 *	8.5 *	8.5 *	10.3 *	9.8	8.0 *	6.4	6.3 *	4.6	5.2	3.5	3.1 *	3.1 *	3.1 *	3.1 *	9.62
-1.5m	6.4 *	6.4 *	10.5 *	10.5 *	12.1 *	9.5	8.7 *	6.2	6.8 *	4.5	4.9 *	3.4		3.7 *	3.3	9.20	
-3.0m	9.4 *	9.4 *	13.7 *	13.7 *	12.2 *	9.4	8.9 *	6.1	6.7	4.4				4.7 *	3.7	8.50	
-4.5m	12.8 *	12.8 *	17.0 *	17.0 *	11.5 *	9.5	8.4 *	6.2						6.4 *	4.6	7.42	
-6.0m			13.9 *	13.9 *	9.6 *	9.6 *								7.1 *	6.8	5.77	

Triple articulation - Dipperstick 3 660 mm

Height																	
+10.5m					4.0 *	4.0 *								3.6 *	3.6 *	4.70	
+9.0m							3.9 *	3.9 *						2.9 *	2.9 *	6.81	
+7.5m							3.8 *	3.8 *	3.2 *	3.2 *				2.6 *	2.6 *	8.12	
+6.0m							3.9 *	3.9 *	3.2 *	3.2 *				2.5 *	2.5 *	9.00	
+4.5m					5.5 *	5.5 *	4.2 *	4.2 *	3.3 *	3.3 *	2.7 *	2.7 *	2.5 *	2.5 *	2.5 *	2.5 *	9.56
+3.0m					11.6 *	11.6 *	6.7 *	6.7 *	4.7 *	4.7 *	3.5 *	3.5 *	2.8 *	2.8 *	2.5 *	2.5 *	9.86
+1.5m					10.0 *	10.0 *	9.2 *	9.2 *	5.4 *	5.4 *	3.8 *	3.8 *	2.9 *	2.9 *	2.5 *	2.5 *	9.92
0m	3.3 *	3.3 *	8.1 *	8.1 *	12.0 *	9.6	6.3 *	6.3	4.1 *	4.1 *	3.0 *	3.0 *	2.6 *	2.6 *	2.6 *	2.6 *	9.75
-1.5m	6.0 *	6.0 *	9.9 *	9.9 *	11.8 *	9.3	7.1 *	6.1	4.4 *	4.4	3.1 *	3.1 *	2.9 *	2.9 *	2.9 *	2.9 *	9.33
-3.0m			13.2 *	13.2 *	10.7 *	9.3	7.6 *	6.1	4.6 *	4.4				3.4 *	3.4 *	8.63	
-4.5m					8.5 *	8.5 *	6.4 *	6.2	4.3 *	4.3 *				4.2 *	4.2 *	7.58	

As per ISO 10567 with excavator equipped with bucket. The indicated load is no more than 87% of hydraulic system lift capacity or 75% of static tipping load. Value marked with an asterisc are limited by the hydraulic system.

Standard equipment

Anti-leakage device on hydraulic control valve
 Auto-Idling device
 Batteries, maintenance free
 Cell phone holder with recharge socket
 Centralised boom lubrication
 Cyclone pre-filter
 Double pumps flow device
 Engine rpm electronic control
 E.T.U. (Easy To Use) multi-function electronic instrument panel
 Foot pedal or lever travel control
 Fuel transfer electrical pump
 Grease bath swing ring
 Hammer/crusher system predisposition
 HD chains
 Horn
 Hydraulic piping and connections with front seals

Hydraulic travel end cylinders
 Hydraulically suspended cab with transparent opening roof and automatic air conditioning system
 M.W.S. (Mechatronic Work Selector)
 One-piece boom or triple articulation
 Power Boost device
 Radio set
 Seat, heated mechanical suspended
 Shoes 600 mm
 S.H.S. (Smart Hydraulic System)
 Swing and travel motors with automatic disc type brakes
 Tier 2 emissioned diesel engine
 Tool kit
 Two-speed intermittent windshield wiper
 Two travel speeds with "Automatic Down Shift device"

Optional equipment

2160 mm Dipperstick
 2500 mm Dipperstick
 2980 mm Dipperstick
 3660 mm Dipperstick
 Air suspended heated seat
 Boom anti-drop valves on lift cylinders
 Boom anti-drop valves on dipperstick cylinder
 Hydraulic quick disconnect predisposition
 Mechanical quick coupler

Multi-purpose, rock and heavy duty buckets with boom/bucket adjustment device
 Northern countries equipment
 Overhead load handling
 Piping on booms for supplementary low flow function
 Shoes 700 - 800 - 900 mm
 Supplementary cab lights
 Supplementary hydraulic function predisposition

Note: standard and optional equipment may vary by country. Consult your FIAT KOBELCO dealer for specific.

Buckets

SAE Capacity	CECE heaped capacity	Width	Weight
0.58 m ³	0.50 m ³	750 mm	585 kg
0.68 m ³	0.59 m ³	850 mm	650 kg
0.85 m ³	0.73 m ³	1000 mm	710 kg
1.10 m ³	0.95 m ³	1200 mm	810 kg
1.20 m ³	1.03 m ³	1300 mm	830 kg
1.40 m ³	1.20 m ³	1500 mm	920 kg

At your own dealership

The information contained in this brochure is intended to be a general nature only. The FIAT KOBELCO company may at any time and from time to time, for technical or other necessary reasons, modify any of the details or specifications of the product described in this brochure. Illustrations do not necessarily show products in standard conditions. The dimensions, weights and capacities shown herein, as well as any conversion data used, are approximate only and are subject to variations within normal manufacturing techniques.

Published by FIAT KOBELCO CONSTRUCTION MACHINERY S.p.A. - <http://www.fiatkobelco.com>
 Printed in Italy - LEADER Firenze - Cod. 60078 - INB Printed 05/04



EVOLVING TECHNOLOGY



FIAT KOBELCO IS A BRAND OF CNH.
 CNH: THE TOTAL SOLUTIONS CHOICE FOR YOUR SPECIFIC BUSINESS NEEDS.