



L-950



SPECIFICATIONS

Engine	1050 hp (783 kW)
Payload	
Standard	54,000 lbs (24,494 kgs)
High lift	48,000 lbs (21,772 kgs)
Bucket capacity	sized to material density
Truck match	75-100 ton



LeTourneau
TECHNOLOGIES™
| MINING
PRODUCTS

POWER MODULE

DIESEL POWER OPTIONS

DETROIT DIESEL ENGINE

	Tier One	Tier Two
Model	16V Series 2000	16V Series 2000
Type	4-cycle turbocharged	4-cycle turbocharged
Rated Power	1050 HP (783 kW) @ 1900 rpm	1050 HP (783 kW) @ 1800 rpm
Bore and Stroke	5.12 in x 5.91 in (130 mm x 150 mm)	5.12 in x 5.91 in (130 mm x 150 mm)
Displacement	1944 cu in (31.86 l)	1944 cu in (31.86 l)

CUMMINS DIESEL ENGINE

	Tier One	Tier Two
Standard Model	QST 30	QST 30
Type	4-Cycle turbocharged	4-Cycle turbocharged
Rated Power	1050 HP (783 kW) @ 1900 rpm	1050 HP (783 kW) @ 1800 rpm
Bore and Stroke	5.51 in x 6.5 in (140 mm x 165 mm)	5.51 in x 6.5 in (140 mm x 165 mm)
Displacement	1861 cu in (30.5 l)	1861 cu in (30.5 l)

RADIATOR/OIL COOLER MODULE

- Split flow side by side
- Thermostatically controlled
- Independent hydraulic motor-driven, radiator-mounted fan
- Variable-speed fan

AIR FILTRATION

- **LeTourneau Self Cleaning KLENZ™ System**
- **99.9% Efficiency removing +0.3 microns**

Supply filtered air for:

- Engine air
- Drive system cooling
- Pressurized cab
- Longest filter maintenance interval in industry

EXHAUST SYSTEM

Dual low restriction muffers with vertical, mid-hood discharge

CONTROL SYSTEM-LINCS™

LeTourneau Integrated Network Control System-LINCS™

Microprocessor Based Full Digital Control and Monitoring

Hydraulics • Electrics • Engine • Traction Drive

- Modular design
- Built-in diagnostics
- Dash display and keypad

LINCS LOAD WEIGH

Integrated microprocessor based data logging and storage system
Displays real time load per pass, per truck and total loads

- Alerts operator if overload occurs
- Stores several months of production information
- Interfaces with radio dispatch systems for real-time monitoring

PROPULSION SYSTEM

Switched Reluctance (SR) Propulsion System

- Solid-state controlled traction drive
- SR drive advantages include:
 - No contactors or power switch gear
 - No commutator or brushes on traction motors

TRAVEL SPEED

INFINITELY VARIABLE

Forward and reverse 0-15 mph (0-24.1 kph)

GENERATOR

- LeTourneau 6-R generator
- Alternating-current, 3-phase, 4-pole
- Solid-state controlled

TRACTION MOTORS

- LeTourneau B40
- SR all wheel drive

DRIVE GEARING

Model LeTourneau 35A

- In-line gear train mounted within the rim of the tire, transmitting power from the traction motor to the tire/rim assembly.
- Each drive unit consists of a three-stage planetary
- Total reduction 95.6:1

PRIMARY BRAKING SYSTEM

Electric braking (retarding) is designed as the primary braking system which can be controlled from the accelerator or retard/brake pedal. This solid-state, non-wearing braking system will bring the loader to a full stop without application of the air operated disc brakes.

SECONDARY AND PARKING BRAKE SYSTEM

Motor speed disc brakes, air applied/spring-released automatic actuation on all four wheels in the event of pressure loss.

FRAME

The unique LeTourneau frames are fabricated from high strength, low-alloy steel with excellent weld characteristics and low temperature properties. The front axle is an integral, fixed part of the frame. The rear axle oscillates a total of +/- 11 degrees.

The independent power module mounting system is cradled within the rear frame by a three-point isolation system.

STEERING AND HOISTING SYSTEM

STEERING

Articulating frame, joystick controlled power steering. The LeTourneau loader, with its constant-rated engine RPM, provides full steering response regardless of vehicle speed.

- Operating pressure 2500 PSI (17,238 kPa)
- Articulation angle 42°
- Rear axle oscillation +/-11°
- Turning radius
 - Standard lift 32 ft 3 in (9.84 m)
 - High lift 35 ft 3 in (10.75 m)

HOIST AND BUCKET CONTROL

Both hoist and bucket control functions are incorporated into a simple joystick control. The proportional electro-hydraulic controlled hoist and bucket system is independent of the steering system utilizing single stage, double-acting cylinders.

Standard/High Lift Cycle Times:

Hoist	10 Seconds
Dump	2 Seconds
Float	5 Seconds
Total Time	17 Seconds

HYDRAULIC SYSTEM

HPD GEAR BOX

- Wet spline design with pressurized, cooled and filtered lubrication
- Ratio 1:1

PUMPS

Main Pumps	(2) Piston Pump	250 GPM	(946 l/min)
Steering	Vane Pump	90 GPM	(340 l/min)
Fan/Blower Drive	Tandem Piston Pump	45/45 GPM	(170/170 l/min)
Cooling System Circulating	Vane	110 GPM	(416 l/min)
Gearbox Lube		17 GPM	(64 l/min)

VALVES

Main	Relief Pressure	3700 PSI (25,511 kPa)
Steering	Relief Pressure	2500 PSI (17,238 kPa)

CYLINDERS

Double-acting, single-stage, diameter and stroke, (standard and high lift)

- Hoist 10 in x 64.5 in (254 mm x 1638 mm)
- Bucket 10 in x 25.5 in (254 mm x 648 mm)
- Steering 7.5 in x 30 in (190 mm x 762 mm)

GENERAL SERVICE DATA

FLUID CAPACITIES

- | | | |
|--------------------------------|----------|-----------|
| • Fuel tank | 565 gals | (2,138 l) |
| • Hydraulic tank | 260 gals | (984 l) |
| • Cooling system | 50 gals | (190 l) |
| • Crankcase (includes filters) | | |
| Cummins | 35 gals | (132 l) |
| Detroit Diesel | 25 gals | (94 l) |
| • Gearbox | 5 gals | (19 l) |
| • Drivers (each) | 6.1 gals | (23 l) |

STANDARD FEATURES

TIRES/RIMS

- Tires 45/65-45 Bias Ply 46 PR L-5 tread
- Rims 36-45

GAUGES AND INDICATORS

- Engine Coolant Temperature Gauge
- Engine Lube-Oil Pressure Gauge
- Fuel Level Gauge
- Hour Meter
- Speedometer
- System Air Pressure Gauge

INDICATOR LIGHTS AND AUDIBLE ALARMS

The operator is informed of a potential problem by audible alarm and indicator lights in addition to text messages on an in-dash display. The digital display provides repair technicians with operational data and fault messages in the event of mechanical, electrical or electronic malfunction.

Three warning lights immediately advise the operator of the severity/condition of various engine, hydraulic, electrical and electronic systems of the loader. (RED, AMBER and BLUE).

STANDARD EQUIPMENT

- Access Ladder Light
- Air Clean-Out Hose In cab
- Air Conditioning / Heater-defroster Filtered and Pressurized
- Air Dryer System
- Air Horn
- Air Tank Bleed System
- Automatic Adjustable Lift Height Cut Off
- Automatic Bucket Leveling Control
- Automatic Electrical Cabinet Lights
- Automatic Lubrication System
- Back-up Alarm, Audible
- Battery Disconnect Switch
- Brake Lights
- Cigar / Cigarette Lighter
- Door Interlock on Electrical Cabinet
- Drawbar with Tow Hitch

- Emergency Exit - Removable Safety Window
- Emergency Stop Buttons - Cab and Remote Mounted
- Engine Compartment Light
- Fire Extinguisher, Manual, 21 lbs (9.53 kgs)
- FOPS - Falling Object Protection System
- Ground Fault Electrics
- HID Headlights
- High, Low Idle Control Switch
- Idle Timer
- Illuminated Instrument Panel
- Interior Lights
- Joystick Hoist and Bucket Controls
- Joystick Steering
- Ladder Walkway - Rear Access
- LINC'S Alarms
- LINC'S - LeTourneau Integrated Network Control System with Load Weigh & Full Vehicle Monitoring
- Maintenance Lock-Out Switch
- Mirrors, Rearview (Parabolic)(2)
- Operator Seat - 9-Way Adjustable w/ Retractable Seat Belt
- Overspeed Alarm
- Parking Brake
- Rock Deflectors (Bucket)
- ROPS - Rollover Protection Structure
- Sun Visor
- Tinted Safety Glass Throughout (Thermopane)
- Turn Signals
- Twelve (12) Volt Power Supply
- Windshield Washer Reservoir (5 gallons)
- Windshield Wiper and Washer, Front & Rear
- Work Lights, 110 Volt - 500 Watt (4) Front (2) Rear

OPTIONAL FEATURES

- Video Camera, Rear Mounted
- Tires 45/65-R45 Radials
- Auxiliary Steering
- Central Service with Fast Fuel
- Engine Heating System, Oil and Water
- Fast Fuel
- Fluid Sampling Kit
- Grease Reservoir Heater
- Hydraulic Tank and Battery Heater
- Jump Start Kit
- L&M Mesabi Radiator
- Manual Fire Detection and Suppression System
- Remote Monitoring System

OPTIONAL QUICK CHANGE BUCKET SYSTEM

STANDARD LIFT, SAE-RATED CAPACITY: 48,000 LBS (21,769 KGS)

ROCK / COAL

Bucket sized to material density

HIGH LIFT, SAE-RATED CAPACITY: 45,000 LBS (20,409 KGS)

ROCK / COAL

Bucket sized to material density

The quick-change bucket has three hooks and two ears on the back of the bucket and a quick-change coupling system with hydraulic cylinders and a control valve on the coupler assembly. An experienced operator can change the bucket in less than five minutes.

BUCKET HARDWARE OPTIONS

- Skid Plates - replaceable
- Lip wear protection
- Wear liner kits

For actual bucket configuration and sizing, consult your dealer representative.

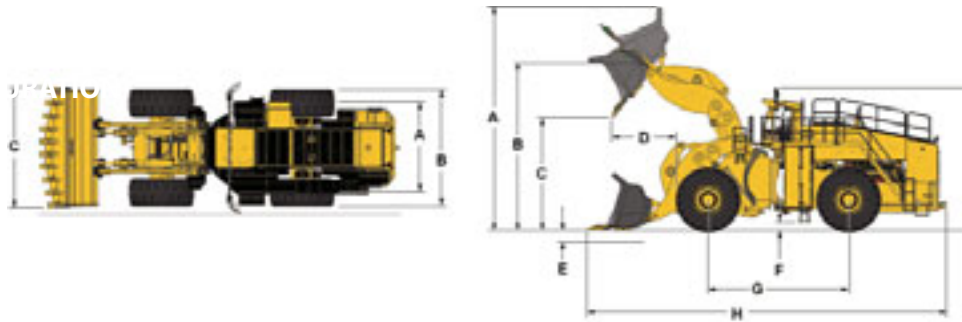
OPERATING CAPACITIES, WEIGHTS AND DIMENSIONS

STANDARD LIFT

HIGH LIFT

Bucket Capacity	18 yd ³	(13.76 m ³)	16 yd ³	(12.23 m ³)
Operating Payload	54,000 lbs	(24,494 kgs)	48,000 lbs	(21,772 kgs)
Bucket Width with Deflectors	17 ft 10 in	(5.44 m)	17 ft 10 in	(5.44 m)
Bucket Width without Deflectors	16 ft 7.25 in	(5.06 m)	16 ft 7.25 in	(5.06 m)
Hinge-Pin Height	22 ft 7.5 in	(6.90 m)	24 ft 5 in	(7.44 m)
Dump Clearance	15 ft 0.75 in	(4.76 m)	17 ft 2.5 in	(5.25 m)
Reach @ Full Lift	7 ft 9.25 in	(2.37 m)	7 ft 6.25 in	(2.29 m)
Digging Depth	0 ft 8.5 in	(0.22 m)	0 ft 9.25 in	(0.23 m)
Height - Bucket Fully Raised	30 ft 2.75 in	(9.21 m)	31 ft 8 in	(9.65 m)
Ground Clearance	1 ft 9.5 in	(0.55 m)	1 ft 9.5 in	(0.55 m)
Overall Length Bucket Down	49 ft 10.25 in	(15.19 m)	50 ft 10.75 in	(15.51 m)
Overall Length Carry Position	48 ft 9 in	(14.86 m)	50 ft 5 in	(15.25 m)
Wheelbase	19 ft 6 in	(5.94 m)	19 ft 6 in	(5.94 m)
Tread	12 ft 3 in	(3.73 m)	12 ft 3 in	(3.73 m)
Width Outside Tires	16 ft	(4.88 m)	16 ft	(4.88 m)
Height Over Cab	18 ft 5 in	(5.61 m)	18 ft 5 in	(5.61 m)
Static Tipping Loads:				
Straight	153,000 lbs	(69,400 kgs)	148,000 lbs	(67,132 kgs)
Full 42° Turn	135,000 lbs	(61,235 kgs)	131,000 lbs	(59,421 kgs)
Breakout Force	160,000 lbs	(72,575 kgs)	165,000 lbs	(74,843 kgs)
Operating Weight	235,000 lbs	(106,595 kgs)	240,000 lbs	(108,863 kgs)

STANDARD CONFIGURATION



TOP VIEW

(A)	12 ft 3 in	(3.73 m)
(B)	16 ft 0 in	(4.87 m)
(C)	16 ft 7.25 in	(5.06 m)

SIDE VIEW

	STANDARD LIFT	HIGH LIFT
Bucket	18 yd ³	(13.76 m ³)
(A)	30 ft 2.75 in	(9.21 m)
(B)	22 ft 7.5 in	(6.90 m)
(C)	15 ft 0.75 in	(4.76 m)
(D)	7 ft 9.25 in	(2.37 m)
(E)	0 ft 8.5 in	(0.22 m)
(F)	1 ft 9.5 in	(0.55 m)
(G)	19 ft 6 in	(5.94 m)
(H)	49 ft 10.25 in	(15.19 m)
(I)	18 ft 5 in	(5.61 m)

All dimensions calculated with teeth on bucket.



P.O. Box 2307 • Longview, TX 75606 • (903) 236-6598 • fax (903) 236-6552 • www.letourneautechnologies.com

Meets the following MSHA, SAE and ISO Safety Standards:

Brake Performance Test SAE J1473 / ISO 3450 • Capacity Rating - Loader Bucket SAE J742 • Exterior Sound Level SAE J88 • FOPS SAE J231 / ISO 3449
Interior Sound Level SAE J919 • Rated Operating Load for Loaders SAE J818 • ROPS SAE J1040 / ISO 3471 • Steering Test SAE J1511 / ISO 5010

Please Note: Standard/Optional Equipment, Features and Performance conform to U.S. and International Codes as Required. LeTourneau Technologies, Inc. has made every effort to make these specifications as accurate as possible at the time of printing. However, we reserve the right to make changes and improvements at any time without notice, in equipment, materials and specifications. To ensure the most current information, please contact your dealer representative.

LeTourneau Equipment Group is now known as LeTourneau Technologies™ Mining Products. LeTourneau, KLENZ, and LINC'S are registered trademarks of LeTourneau Technologies, Inc. ©2007