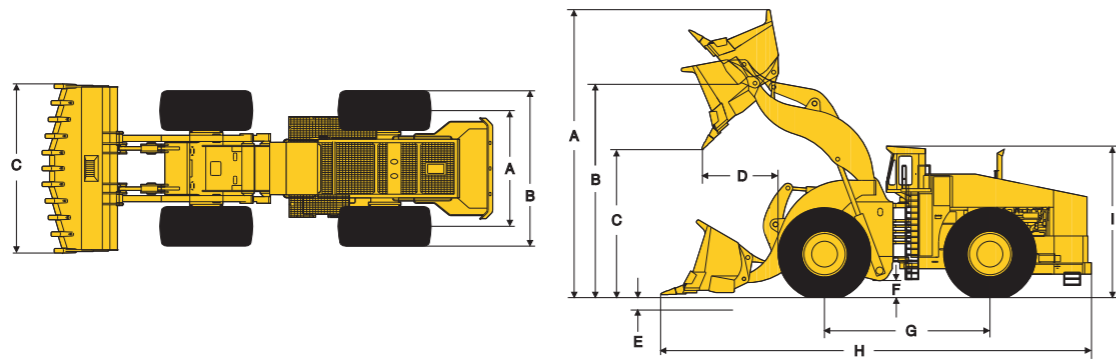


OPERATING CAPACITIES, WEIGHTS, AND DIMENSIONS

	STANDARD LIFT		HIGH LIFT	
Bucket Capacity	53 yd ³	(40.52 m ³)	50 yd ³	(38.23 m ³)
Operating Payload	160,000 lbs	(72,574 kgs)	150,000 lbs	(68,039 kgs)
Bucket Width with Deflectors	24 ft 10 in	(7.58 m)	24 ft 10 in	(7.58 m)
Bucket Width without Deflectors	23 ft 0 in	(7.01 m)	23 ft 0 in	(7.01 m)
Hinge-Pin Height	32 ft 6 in	(9.91 m)	34 ft 9 in	(10.59 m)
Dump Clearance	23 ft 1 in	(7.03 m)	26 ft 4 in	(8.01 m)
Reach @ Full Lift	10 ft 5 in	(3.18 m)	11 ft 5 in	(3.49 m)
Digging Depth	0 ft 10 in	(.25 m)	0 ft 10 in	(.25 m)
Height - Bucket Fully Raised	43 ft 11 in	(13.39 m)	45 ft 7 in	(13.89 m)
Ground Clearance	1 ft 8 in	(.50 m)	1 ft 8 in	(.50 m)
Overall Length Bucket Down	66 ft 6 in	(20.3 m)	68 ft 7 in	(20.9 m)
Overall Length Carry Position	65 ft 2 in	(19.87 m)	65 ft 10 in	(20.07 m)
Wheelbase	25 ft 10 in	(7.88 m)	25 ft 10 in	(7.88 m)
Tread	16 ft 5 in	(5.0 m)	16 ft 5 in	(5.0 m)
Width Outside Tires	22 ft 2 in	(6.76 m)	22 ft 2 in	(6.76 m)
Height Over Cab	21 ft 2 in	(6.45 m)	21 ft 2 in	(6.45 m)
Static Tipping Loads				
Straight	406,300 lbs	(184,300 kgs)	362,000 lbs	(164,200 kgs)
Full 42° Turn	379,400 lbs	(172,100 kgs)	338,000 lbs	(153,300 kgs)
Breakout Force	263,702 lbs	(119,613 kgs)	289,900 lbs	(131,500 kgs)
Operating Weight	586,000 lbs	(265,805 kgs)	598,000 lbs	(271,250 kgs)

STANDARD CONFIGURATION



TOP VIEW

(A)	16 ft 5 in	(5.0 m)
(B)	22 ft 2 in	(6.76 m)
(C)	24 ft 10 in	(7.58 m)

SIDE VIEW

	STANDARD LIFT		HIGH LIFT	
Bucket	53 yd ³	(40.52 m ³)	50 yd ³	(38.23 m ³)
(A)	43 ft 11 in	(13.39 m)	45 ft 7 in	(13.89 m)
(B)	32 ft 6 in	(9.91 m)	34 ft 9 in	(10.59 m)
(C)	23 ft 0 in	(7.02 m)	26 ft 4 in	(8.01 m)
(D)	10 ft 5 in	(3.18 m)	11 ft 5 in	(3.49 m)
(E)	0 ft 10 in	(.25 m)	0 ft 10 in	(.25 m)
(F)	1 ft 8 in	(.50 m)	1 ft 8 in	(.50 m)
(G)	25 ft 10 in	(7.88 m)	25 ft 10 in	(7.88 m)
(H)	66 ft 6 in	(20.28 m)	68 ft 7 in	(20.9 m)
(I)	21 ft 2 in	(6.45 m)	21 ft 2 in	(6.45 m)



P.O. Box 2307 • Longview, TX 75606 • (903) 236-6598 • fax (903) 236-6552 • www.letourneautechnologies.com

Meets the following MSHA, SAE and ISO Safety Standards:

Brake Performance Test SAE J1473 / ISO 3450 • Capacity Rating - Loader Bucket SAE J742 • Exterior Sound Level SAE J88 • FOPS SAE J231 / ISO 3449
Interior Sound Level SAE J919 • Rated Operating Load for Loaders SAE J818 • ROPS SAE J1040 / ISO 3471 • Steering Test SAE J1511 / ISO 5010

Please Note: Standard/Optional Equipment, Features and Performance conform to U.S. and International Codes as Required. LeTourneau Technologies, Inc. has made every effort to make these specifications as accurate as possible at the time of printing. However, we reserve the right to make changes and improvements at any time without notice, in equipment, materials and specifications. To ensure the most current information, please contact your dealer representative.

LeTourneau Equipment Group is now known as LeTourneau Technologies™ Mining Products. LeTourneau, KLENZ and LINC are registered trademarks of LeTourneau Technologies, Inc. ©2007



L-2350

SPECIFICATIONS

Engine	2300 hp (1715 kW)
Payload	
Standard	160,000 lbs (72,574 kgs)
High lift	150,000 lbs (68,039 kgs)
Bucket capacity	sized to material density
Truck match	240-400 + tons

POWER MODULE

DIESEL POWER OPTIONS

DETROIT DIESEL ENGINE

	Tier One	Tier Two
Model	16V Series 4000	16V Series 4000
Type	4-cycle turbocharged	4-cycle turbocharged
Rated Power	2300 HP (1715 kW) @ 1900 rpm	2300 HP (1715 kW) @ 1800 rpm
Bore and Stroke	6.5 in x 7.5 in (165 mm x 190 mm)	6.69 in x 8.27 in (170 mm x 210 mm)
Displacement	3967 cu in (65.0 l)	4656 cu in (76.3 l)

CUMMINS DIESEL ENGINE

Model	QSK 60
Type	4-cycle turbocharged
Rated Power	2300 HP (1715 kW) @ 1800 rpm
Bore and Stroke	6.26 in x 7.48 in (159 mm x 190 mm)
Displacement	3661 cu in (60 l)

RADIATOR/OIL COOLER MODULE

- Replaceable tube type, side-by-side split flow
- Thermostatically controlled variable speed hydraulic motor-driven, radiator-mounted fan
- Auxiliary oil cooler available for high ambient conditions

EXHAUST SYSTEM

Low restriction mufflers with vertical mid-hood discharge

AIR FILTRATION

PRIMARY

LeTourneau Self Cleaning KLENZ™ Filtration System 99.9% Efficiency Removing to 0.3 Microns (nominal)

- Extends maintenance intervals
- Filtered air for engine, drive systems cooling and pressurized cab

SECONDARY

Dual safety filters for engine

EXHAUST SYSTEMS

Dual low restriction mufflers with top hood discharge

CONTROL SYSTEM-LINCS™

LeTourneau Integrated Network Control System - LINCS™

Microprocessor Based Full Digital Control and Monitoring

Hydraulics • Electrics • Engine • Traction Drive

- Modular design
- Built-in diagnostics
- Dash display and keypad
- Three levels of warning lights with audible alarm

LINCS™ LOAD WEIGH

- Integrated microprocessor based data logging and storage system
- Displays real time load per pass, per truck and total loads
- Alerts operator if overload occurs
- Stores several month's of production information
- Interfaces with radio dispatch systems for real-time monitoring

GAUGES AND INDICATORS

- Engine Coolant Temperature Gauge
- Engine Lube-Oil Pressure Gauge
- Fuel Level Gauge
- Hour Meter
- Speedometer
- System Air Pressure Gauge

PROPULSION SYSTEM

- Solid-AC-DC Phase Controlled Traction Drive
- No Contactors or Power Switch Gear
- Infinitely Variable Speed Control

TRAVELING SPEED

INFINITELY VARIABLE

Forward and reverse 0-10.5 mph (0-16.9 kph)

GENERATOR

- LeTourneau 12C generator
- Alternating-current, 3-phase, 4-pole
- Solid-state controlled
- Standby power capability

TRACTION MOTORS

- LeTourneau J2 traction motor four (4)
- Direct-current, 4-pole, shunt-wound

DRIVE GEARING

Model	LeTourneau 57
<ul style="list-style-type: none">In-line gear train mounted within the rim of the tire, transmitting power from the traction motor to the tire/rim assemblyA four-stage planetary drive unit in each positionTotal Reduction 99:1	

BRAKING SYSTEM

PRIMARY BRAKE SYSTEM

Electric dynamic braking system may be controlled from the accelerator and/or brake pedal. Braking system brings the loader to a full stop without application of mechanical brakes.

SECONDARY BRAKE SYSTEM

Air modulated motor speed disc brakes.

- Single disc and caliper per position
- Emergency fail safe brake mode is spring applied in the event of pressure loss.

PARKING BRAKE SYSTEM

Spring applied, air release motor speed disc brakes.

FRAME

The unique LeTourneau frames are fabricated from high-strength, low-alloy steel with excellent weld characteristics and low temperature properties. The front axle is an integral, fixed part of the frame. The rear axle oscillates a total of +/-6.5 degrees.

The independent power module mounting system is cradled within the rear frame by a three-point isolation system.

STEERING AND HOISTING SYSTEM

STEERING

Joystick controlled articulating frame, power steering. LeTourneau's constant engine rated RPM assures full hydraulic steering response regardless of the vehicle speed and operation.

<ul style="list-style-type: none">Operating pressure 3400 PSI (23,426 kPa)Articulation angle R-42°, L-41°Rear axle oscillation +/- 6.5°Turning radius	
Standard lift	51 ft 2 in (15.60 m)
High lift	51 ft 7 in (15.72 m)

HOIST AND BUCKET CONTROL

Hoist and bucket control functions are incorporated into a simple joystick control. The proportional electro-hydraulic controlled hoist and bucket system is independent of the steering system utilizing single stage, double-acting cylinders.

Hydraulic Cycle Times Standard/High Lift:

• Hoist	16 Seconds
• Dump	3 Seconds
• Float	6 Seconds

HYDRAULIC SYSTEM

HPD GEAR BOX

- Wet spline design with pressurized, cooled, and filtered lubrication
- Ratio 1:1

PUMPS

Main	Piston (4)	500 GPM	(1419 l/min)
Steering	Piston	90 GPM	(341 l/min)
Fan Drive	Piston	45 GPM	(170 l/min)
Blower	Piston	45 GPM	(170 l/min)
Accessory	Piston	14 GPM	(64 l/min)
Cooling System			
Circulating Pump	Vane	110 GPM	(417 l/min)

VALVES

Main	Three (3)	185 GPM	(700 l/min)
	Relief Pressure	4000 PSI	(27,579 kPa)
Steering	One (1)	90 GPM	(341 l/min)
	Relief Pressure	3400 PSI	(23,426 kPa)

CYLINDERS

Double-acting, single-stage, diameter and stroke, (standard and high lift)

• Hoist	16 in x 83 in (406 mm x 2108 mm)
• Bucket	12.5 in x 42.75 in (317.5 mm x 1085 mm)
• Steering	7.5 in x 30.0 in (191 mm x 762 mm)

GENERAL SERVICE DATA

FLUID CAPACITIES

• Fuel tank	1050 gals	(3975 l)
• Hydraulic tank	382 gals	(1,446 l)
• Cooling system	130 gals	(492 l)
• Crankcase (includes filters)		
Detroit Diesel	66 gals	(250 l)
Cummins Engine	54 gals	(204 l)
• Gearbox	7 gals	(27 l)
• Drivers (each)	25 gals	(95 l)

STANDARD FEATURES

TIRES/RIMS

- Tires - 70/70-57 82 PR
- Rims - 60X57

STANDARD EQUIPMENT

- Access Ladder Light Kit
- Air Cleanout Hose in Cab
- Air Conditioning/Heater-Defroster Filtered and Pressurized
- Air Dryer System
- Air Horn
- Air Tank Bleed Kit
- Automatic Adjustable Lift Height Cut Off
- Automatic Bucket Leveling Device
- Automatic Electrical Cabinet Lights
- Automatic Lubrication System
- Backup Alarm, Audible
- Battery Disconnect Switch
- Cigar/Cigarette Lighter
- Dual Door Interlock Kit
- Drawbar with Tow Hitch
- Emergency Exit – Removable Safety Window
- Emergency Stop - Cab and Remote Mounted
- Engine Compartment Light
- Five (5) Gallon Windshield Washer Reservoir
- FOPS, Falling Object Protection System
- Ground Fault Electrics
- HID Headlights
- High, Low Idle Switch
- HID Work Lights (10 Forward, 2 Rear)

- Idle Timer
- Illuminated Instrument Panel
- Interior Lights
- Joystick Hoist and Bucket Controls
- Joystick Steering
- Ladder Walkway-Rear Access with Retracting Ladder
- LINCS Alarm
- LINCS - LeTourneau Integrated Network Control System
- Manual Fire Extinguisher, 20 lbs (9.07 kgs)
- Maintenance Lock-Out Switch
- Mirror, Rearview (Parabolic) (2)
- Operator Seat (9-way Adjustable)
- Over Speed Alarm
- Parking Brake
- Retractable Seat Belt and Shoulder Harness
- Rock Deflectors (Bucket)
- ROPS, Rollover Protective Structure
- Standby Power Capability
- Sun Visor
- Tinted Safety GlassThroughout (Thermopane)
- Turn Signals
- Twelve (12) Volt Power Supply (Cab)
- Windshield Wiper and Washer, Front and Rear

OPTIONAL FEATURES

- Auxiliary Oil Cooler
- Auxiliary Steering
- Beacon Light Kit (Amber)
- Central Service with Fast Fuel
- Engine Heating System (Oil and Water)
- Fast Fuel
- Fire Detection and Suppression System (Manual)
- Fluid Sampling Kit
- Grease Reservoir Heater
- High Lift
- Hydraulic Tank and Battery Heater
- Jump Start Kit
- Remote Monitoring System
- Standby Power
- Tires-70/70-57 82 PR
- Training Seat (w/Lapbelt)
- Video Camera, Rear-Mounted

BUCKETS

- STANDARD, SAE-RATED CAPACITY: 160,000 LBS (72,574 KGS)**
- HIGH LIFT, SAE-RATED CAPACITY: 150,000 LBS (68,039 KGS)**

Rock / Coal / Iron Ore
Bucket sized to material density

BUCKET HARDWARE OPTIONS

- Teeth and Lip Options Available
- Lip Wear Protection and Teeth
- Skid Plates - Replaceable
- Wear Liner Kits

For additional bucket sizes and hardware options consult your dealer representative.