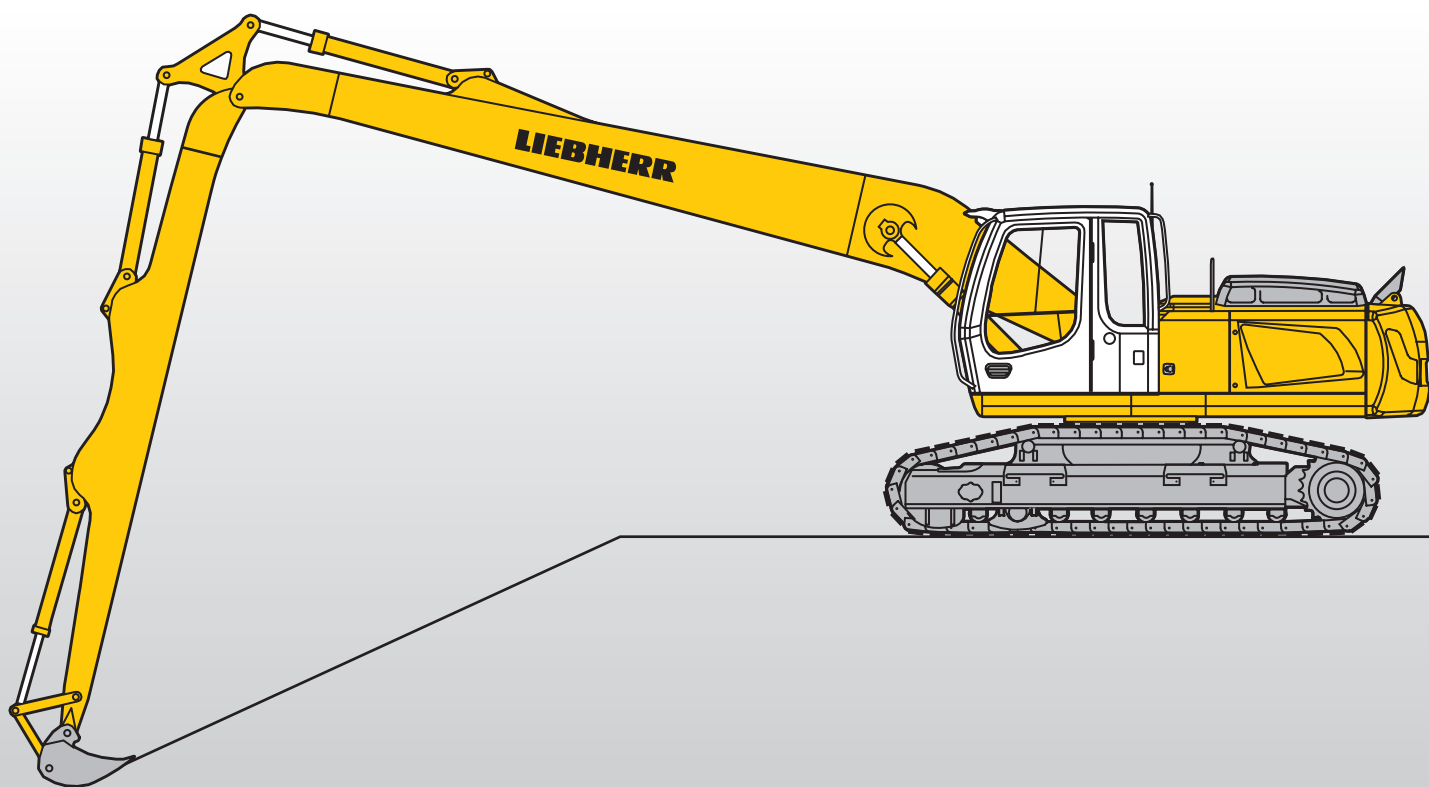


Crawler Excavator

R 924 C
Litronic®

Attachment Information

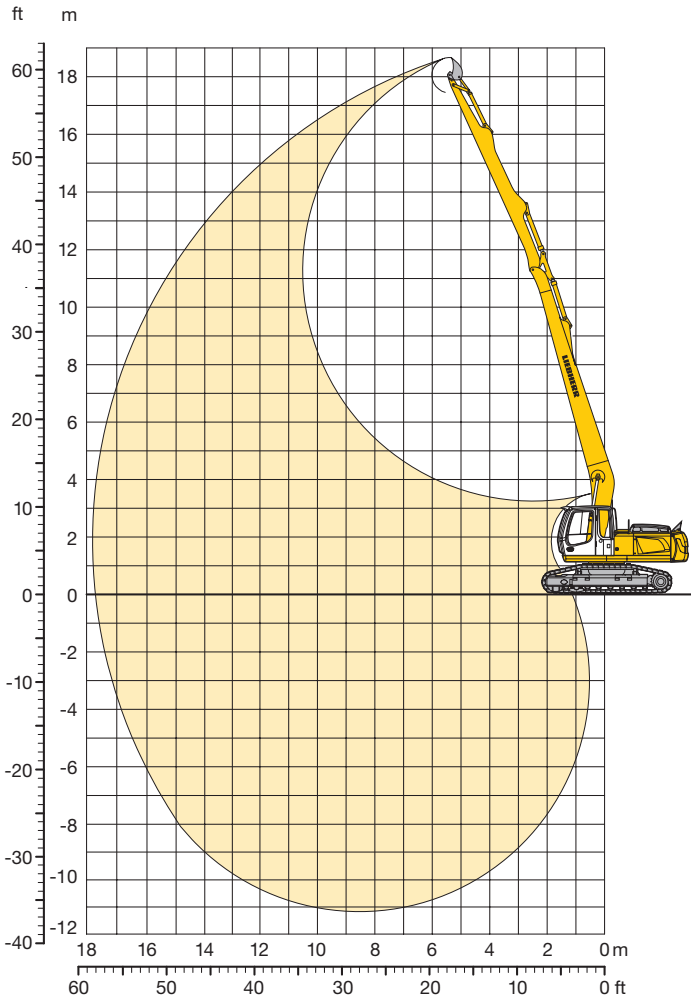
Liebherr Crawler Excavator
with Ditchcleaning Attachment



LIEBHERR

Ditchcleaning Attachment

with Gooseneck Boom 9,70 m for Ditchcleaning Attachment and HD-SL-Undercarriage



Digging Envelope for Ditchcleaning Bucket

Stick length	m	7,40
Max. digging depth	m	11,05
Max. reach at ground level	m	17,75
Max. dump height	m	17,45
Max. teeth height	m	18,70
Digging force ISO	kN	37,60
	t	3,83
Breakout force ISO	kN	88,60
	t	9,03

Operating Weight and Ground Pressure

Operating weight includes basic machine with gooseneck boom 9,70 m for ditchcleaning attachment, stick 7,40 m for ditchcleaning attachment and ditchcleaning bucket 0,45 m³.

Undercarriage		HD-SL	
Pad width	mm	600	750
Weight	kg	26195	26620
Ground pressure	kg/cm ²	0,53	0,43

Ditchcleaning Bucket for Ditchcleaning Attachment

Cutting width SAE	mm	2000	2000 ¹⁾
Capacity ISO 7451	m ³	0,45	0,45
Weight	kg	210	370

¹⁾ Ditchcleaning bucket 2 x 45° tiltable

Lift Capacities

with Gooseneck Boom 9,70 m for Ditchcleaning Attachment and HD-SL-Undercarriage

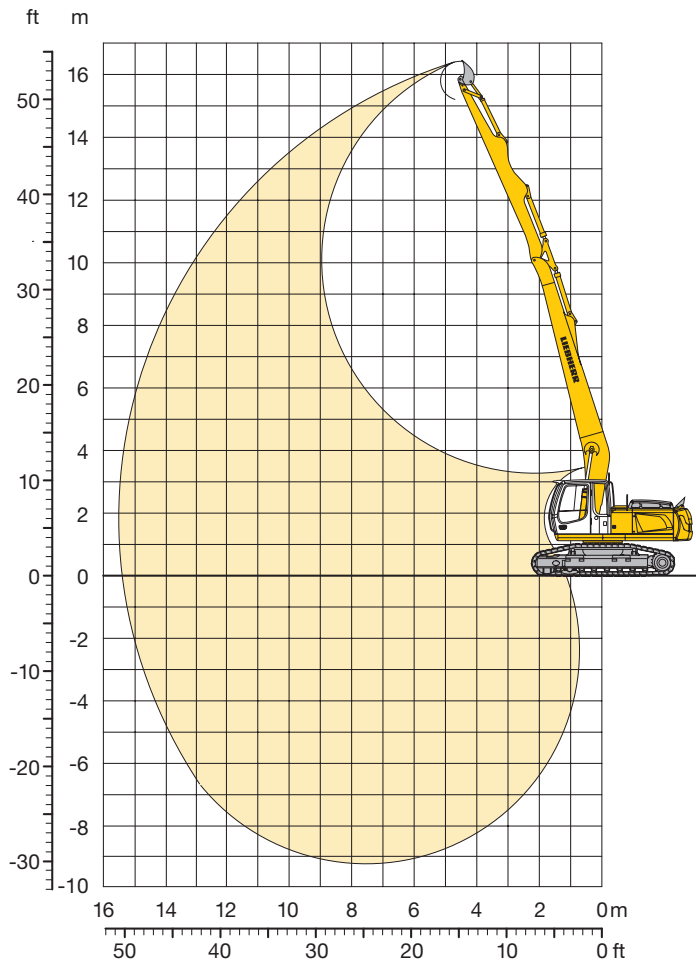
Stick for Ditchcleaning Attachment 7,40 m

Height (m)	Under-carriage	Radius of load from centerline of machine (m)									
		4,5	6,0	7,5	9,0	10,5	12,0	13,5	15,0	16,5	
15,0	HD-SL				1,8# (1,8#)	1,8# (1,8#)					
13,5	HD-SL					1,6# (1,6#)	1,5# (1,5#)				
12,0	HD-SL					1,5# (1,5#)	1,5# (1,5#)	1,4# (1,4#)			
10,5	HD-SL					1,5# (1,5#)	1,5# (1,5#)	1,4# (1,4#)			
9,0	HD-SL					1,6# (1,6#)	1,5# (1,5#)	1,5# (1,5#)	1,3# (1,3#)		
7,5	HD-SL				1,8# (1,8#)	1,7# (1,7#)	1,7# (1,7#)	1,6# (1,6#)	1,3 (1,4#)		
6,0	HD-SL				2,1# (2,1#)	2,0# (2,0#)	1,9# (1,9#)	1,7# (1,7#)	1,3 (1,5#)	1,0 (1,1#)	
4,5	HD-SL		3,8# (3,8#)	3,2# (3,2#)	2,8# (2,8#)	2,5# (2,5#)	2,1 (2,2#)	1,6 (1,9#)	1,3 (1,6#)	1,0 (1,3#)	
3,0	HD-SL	9,0# (9,0#)	6,0 (6,5#)	4,3 (5,2#)	3,2 (4,2#)	2,5 (3,2#)	2,0 (2,6#)	1,6 (2,2#)	1,2 (1,8#)	1,0 (1,4#)	
1,5	HD-SL	7,3# (7,3#)	5,3 (7,3#)	3,9 (5,6#)	3,0 (4,6#)	2,3 (3,9)	1,8 (3,1)	1,5 (2,5#)	1,2 (2,0#)	0,9 (1,5#)	
0	HD-SL	4,5# (4,5#)	4,8 (7,8#)	3,6 (6,0#)	2,7 (4,7)	2,2 (3,7)	1,7 (3,0)	1,4 (2,5)	1,1 (2,1)	0,9 (1,5#)	
- 1,5	HD-SL	4,0# (4,0#)	4,5 (7,0#)	3,3 (5,8)	2,6 (4,5)	2,0 (3,6)	1,6 (2,9)	1,3 (2,4)	1,1 (2,0)	0,9 (1,5#)	
- 3,0	HD-SL	4,0# (4,0#)	4,3 (6,2#)	3,2 (5,6)	2,4 (4,3)	1,9 (3,5)	1,6 (2,8)	1,3 (2,4)	1,1 (2,0)	0,9 (1,1#)	
- 4,5	HD-SL	4,2# (4,2#)	4,3 (6,2#)	3,1 (5,6)	2,4 (4,3)	1,9 (3,4)	1,5 (2,8)	1,3 (2,4)	1,1 (2,0)		
- 6,0	HD-SL	4,6# (4,6#)	4,3 (6,6#)	3,1 (5,4#)	2,4 (4,2)	1,9 (3,4)	1,5 (2,8)	1,3 (2,4)	1,1 (1,8#)		
- 7,5	HD-SL	5,2# (5,2#)	4,3 (5,7#)	3,1 (4,7#)	2,4 (3,9#)	1,9 (3,2#)	1,5 (2,6#)	1,3 (1,9#)			
- 9,0	HD-SL	5,4# (5,4#)	4,5 (4,6#)	3,2 (3,8#)	2,4 (3,2#)	2,0 (2,5#)	1,6 (1,9#)				

The lift capacities are stated in metric tonnes (t) on the articulation stick/bucket (bucket's weight included) and can be lifted 360° on firm, level supporting surface. Values quoted in brackets are valid for the undercarriage when in longitudinal position. Capacities are valid for 600 mm wide triple grouser pads. Indicated loads are based on ISO 10567 standard and do not exceed 75 % of tipping or 87 % of hydraulic capacity (indicated via #). Without bucket (0,45 m³), the lift capacities will increase by 210 kg, without bucket cylinder, link and lever they increase by an additional 100 kg. Lifting capacity of the excavator is limited by machine stability, hydraulic capacity and maximum permissible load of the load hook. According to European Standard, EN 474-5: In the European Union excavators have to be equipped with an overload warning device, a load diagram and automatic check valves on the hoist cylinders, when they are used for lifting operations which require the use of lifting accessories.

Ditchcleaning Attachment

with Gooseneck Boom 8,50 m for Ditchcleaning Attachment and HD-SL-Undercarriage



Digging Envelope for Ditchcleaning Bucket

Stick length	m	6,20
Max. digging depth	m	9,20
Max. reach at ground level	m	15,35
Max. dump height	m	15,20
Max. teeth height	m	16,45
Digging force ISO	kN	44,20
Breakout force ISO	t	4,51
	kN	88,60
	t	9,03

Operating Weight and Ground Pressure

Operating weight includes basic machine with gooseneck boom 8,50 m for ditchcleaning attachment, stick 6,20 m for ditchcleaning attachment and ditchcleaning bucket 0,45 m³.

Undercarriage		HD-SL	
Pad width	mm	600	750
Weight	kg	25905	26330
Ground pressure	kg/cm ²	0,53	0,43

Ditchcleaning Bucket for Ditchcleaning Attachment

Cutting width SAE	mm	2000	2000 ¹⁾
Capacity ISO 7451	m ³	0,45	0,45
Weight	kg	210	370

¹⁾ Ditchcleaning bucket 2 x 45° tiltable

Lift Capacities

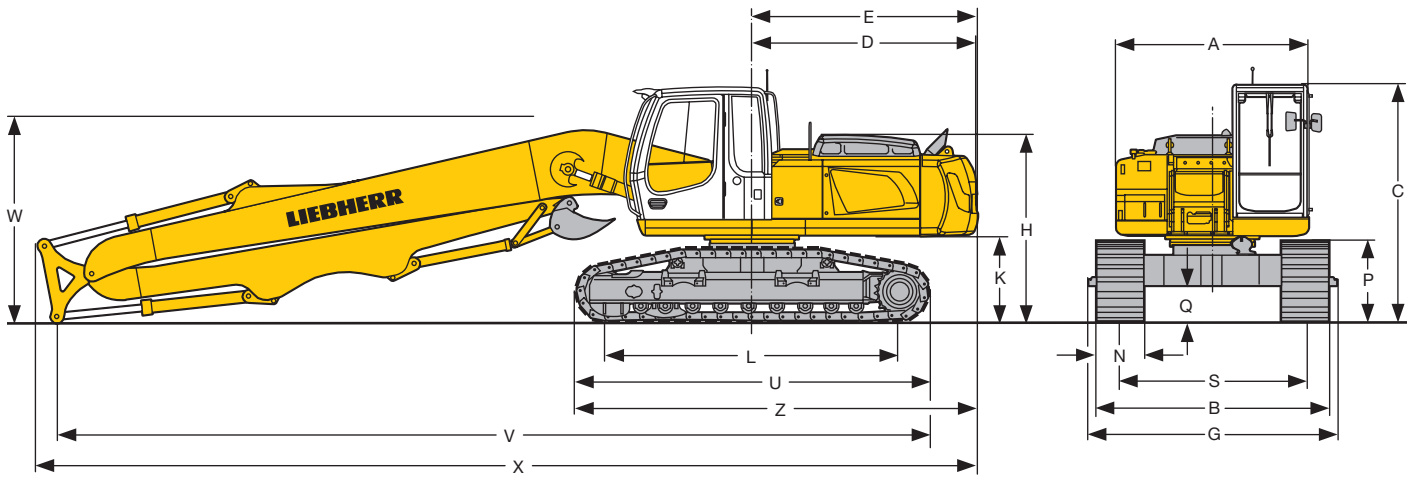
with Gooseneck Boom 8,50 m for Ditchcleaning Attachment and HD-SL-Undercarriage

Stick for Ditchcleaning Attachment 6,20 m

Height (m)	Under-carriage	Radius of load from centerline of machine (m)								
		4,5	6,0	7,5	9,0	10,5	12,0	13,5	15,0	16,5
15,0	HD-SL		3,1# (3,1#)							
13,5	HD-SL			2,3# (2,3#)	2,3# (2,3#)					
12,0	HD-SL				2,0# (2,0#)	2,0# (2,0#)				
10,5	HD-SL				2,0# (2,0#)	1,9# (1,9#)	1,7# (1,7#)			
9,0	HD-SL				2,0# (2,0#)	1,9# (1,9#)	1,8# (1,8#)			
7,5	HD-SL				2,1# (2,1#)	2,1# (2,1#)	1,9# (1,9#)	1,6# (1,6#)		
6,0	HD-SL			2,6# (2,6#)	2,5# (2,5#)	2,3# (2,3#)	2,1# (2,1#)	1,7 (1,8#)		
4,5	HD-SL		4,2# (4,2#)	3,5# (3,5#)	3,1# (3,1#)	2,7# (2,7#)	2,1 (2,3#)	1,7 (1,9#)		
3,0	HD-SL	9,4 (9,6#)	6,2 (7,1#)	4,4 (5,7#)	3,3 (4,2#)	2,6 (3,3#)	2,0 (2,6#)	1,6 (2,1#)		
1,5	HD-SL	8,4 (10,0#)	5,6 (7,9#)	4,1 (6,2#)	3,1 (5,1)	2,5 (4,0)	2,0 (3,1#)	1,6 (2,3#)		
0	HD-SL	6,2# (6,2#)	5,2 (8,4#)	3,9 (6,4)	3,0 (4,9)	2,4 (3,9)	1,9 (3,2)	1,5 (2,5#)		
- 1,5	HD-SL	5,4# (5,4#)	5,0 (8,5#)	3,7 (6,2)	2,8 (4,7)	2,3 (3,8)	1,8 (3,1)	1,5 (2,5#)		
- 3,0	HD-SL	5,5# (5,5#)	4,9 (8,2#)	3,6 (6,1)	2,8 (4,7)	2,2 (3,7)	1,8 (3,1)	1,5 (2,3#)		
- 4,5	HD-SL	6,1# (6,1#)	4,8 (7,5#)	3,5 (6,0)	2,7 (4,6)	2,2 (3,7)	1,8 (3,1)			
- 6,0	HD-SL	6,8# (6,8#)	4,9 (6,6#)	3,5 (5,3#)	2,7 (4,3#)	2,2 (3,5#)	1,8 (2,5#)			
- 7,5	HD-SL	6,2# (6,2#)	5,0 (5,2#)	3,6 (4,3#)	2,8 (3,4#)	2,3 (2,4#)				
- 9,0	HD-SL									

The lift capacities are stated in metric tonnes (t) on the articulation stick/bucket (bucket's weight included) and can be lifted 360° on firm, level supporting surface. Values quoted in brackets are valid for the undercarriage when in longitudinal position. Capacities are valid for 600 mm wide triple grouser pads. Indicated loads are based on ISO 10567 standard and do not exceed 75 % of tipping or 87 % of hydraulic capacity (indicated via #). Without bucket (0,45 m³), the lift capacities will increase by 210 kg, without bucket cylinder, link and lever they increase by an additional 100 kg. Lifting capacity of the excavator is limited by machine stability, hydraulic capacity and maximum permissible load of the load hook. According to European Standard, EN 474-5: In the European Union excavators have to be equipped with an overload warning device, a load diagram and automatic check valves on the hoist cylinders, when they are used for lifting operations which require the use of lifting accessories.

Dimensions



	mm
A	2500
C	3070
D	2920
E	2940
H	2425
K	1100
L	3830
P	995
Q	470
S	2400
N	600 750
B	3000 3150
G	3160 3160
U	4635
Z	5250

Gooseneck Boom 8,50 m for Ditchcleaning Attachment, Stick 6,20 m for Ditchcleaning Attachment and HD-SL-Undercarriage

V	11400
W	2700
X	12300

Gooseneck Boom 9,70 m for Ditchcleaning Attachment, Stick 7,40 m for Ditchcleaning Attachment and HD-SL-Undercarriage

V	12600
W	2750
X	13500

Liebherr-France SAS

2, avenue Joseph Rey, B.P. 90287, F-68005 Colmar Cedex

+33 389 21 30 30, Fax +33 389 21 37 93

www.liebherr.com, E-Mail: info.lfr@liebherr.com