

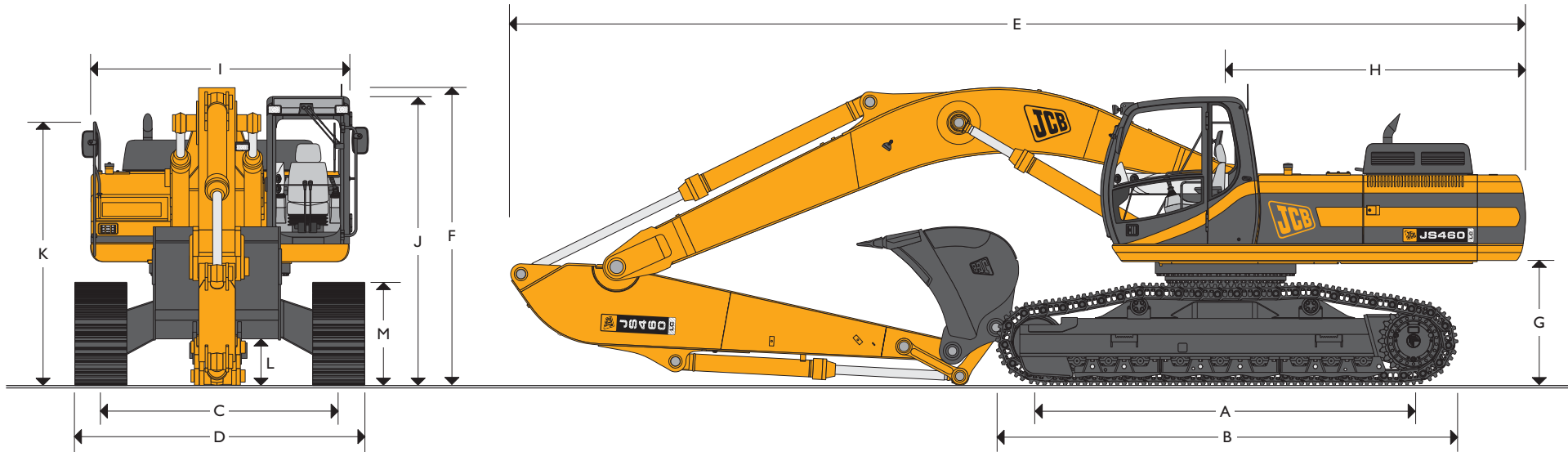


JCB TRACKED EXCAVATOR | JS 460L



MAX. OPERATING WEIGHT: 46820kg (103220lb)

NETT ENGINE POWER: 228kW (305hp)



STATIC DIMENSIONS

		m (ft-in)					m (ft-in)	
A	Track length on ground	4.40 (14-14)			G	Counterweight clearance	1.38 (4-5)	
B	Undercarriage overall length	5.38 (17-6)			H	Tail swing radius	3.47 (11-4)	
C	Track gauge	2.75 (9-0)			I	Width of superstructure	2.99 (9-8)	
D	Width of tracks 24" (600mm) shoes	3.35 (10-10)			J	Height over cab	3.29 (10-8)	
D	Width of tracks 27.5" (700mm) shoes	3.45 (11-3)			K	Height over grabrail	2.59 (8-6)	
D	Width of tracks 800mm (31"5") shoes	3.55 (11-6)			L	Ground clearance	0.60 (2-0)	
D	Width of tracks 900mm (35"5") shoes	3.65 (11-9)			M	Track height	1.20 (3-9)	
Dipper lengths		2.5m (8ft 2in)	3.36m (11ft 0in)	4.0m (13ft 1in)	4.76m (15ft 6in)			
E	Transport length	11.86 (38-9)	11.84 (38-8)	11.87 (38-9)	11.94 (39-1)			
F	Transport height	3.56 (11-6)	3.51 (11-5)	3.59 (11-7)	3.90 (12-7)			



JCB TRACKED EXCAVATOR | JS 460L



ENGINE

Model	Isuzu AA-6SD1TC
Type	Water cooled, 4-stroke, 6-cylinder overhead cam vertical in-line, direct injection, turbocharged diesel.
	Tier II low emission with air to air intercooling.
Net power (ISO 3046-INF)	228 kW (305 HP) @ 2000 rpm
Displacement	9.839 Litres (600.4 cu.in.)
Bore/stroke	120mm x 145mm (4.72in x 5.7in)
Air filtration	Dry element with secondary safety element and in-cab warning indicator.
Starting system	24 volt.
Batteries	2 x 12 volt.
Alternator	24 volt, 50 amp.

SWING SYSTEM

Swing motor	Twin axial piston type.
Swing brake	Hydraulic shock-free braking plus automatic spring applied disc type parking brake.
Final drive	Twin gearbox planetary reduction.
Swing speed	9.2 rpm
Swing gear	Large diameter, internally toothed fully sealed grease bath lubricated.
Swing lock	Multi position switchable brake.

UNDERCARRIAGE

Carriage options:	Long carriage fixed track gauge.
Construction:	Fully welded, 'X' type frame with central belly guarding and sloping sidemembers.
Recovery point	Front and rear.
Track shoe options	600mm (24 in), 700mm (27.5 in), 800mm (31.5 in), 900mm (35.5 in).
Track chain	Heavy duty sealed and greased type.
Upper & lower rollers	Heat treated, lubricated and sealed.
Track adjustment	Grease cylinder type.
Track idler	Lubricated and sealed, with spring cushioned recoil.
Quantity of lower rollers	9 per side
Quantity of upper rollers	2 per side
Quantity of track shoes	52 per side
Track guides	Twin or full length. Fitted to both sides of bottom rollers.

HYDRAULIC SYSTEM

A variable flow load sensing system with flow on demand, variable power output and servo operated, multi-function open centre control.

Pumps

Main pumps	2 variable displacement axial piston type.
Maximum flow	2 x 340 L/min (2 x 75 gal/min).
Servo pump	Gear type.
Maximum flow	31 L/min (6.8 gal/min).
Auxiliary pump	40 L/min (8.8 gal/min).

Control valve

A combined four and five spool control valve with auxiliary service spool is standard. When required, twin pump flow is combined to boom, dipper and bucket services for greater speed and efficiency.

Relief valve settings

Boom/Arm/Bucket	325 bar (4712 psi)
With power boost	355 bar (5147 psi)
Swing circuit	300 bar (4347 psi)
Travel circuit	325 bar (4712 psi)
Pilot control	45 bar (652 psi)

Hydraulic cylinders

Double acting type, with bolt-up end caps and hardened steel bearing bushes. End cushioning is fitted as standard on boom, dipper and bucket rams.

Dimensions

Boom	
Bore	160mm (6.3in)
Rod	110mm (4.3in)
Stroke	1580mm (52.2in)
Dipper	
Bore	180mm (7.1in)
Rod	130mm (5.1in)
Stroke	1910mm (75.2in)
Bucket	
Bore	160mm (6.3in)
Rod	110mm (4.3in)
Stroke	1306mm (51.4in)

Filtration

The hydraulic components are protected by the highest standard of filtration to ensure long hydraulic fluid and component life.

In tank	150 micron, suction strainer
Main return line	10 micron, fibreform element
Plexus bypass line	1.5 micron, paper element
Pilot line	10 micron, paper element
Hydraulic hammer return	10 micron, reinforced microform element

Cooling

Cooling is provided via a full return line air blast cooler with anti-block wavy cooling fins and separate easy clean fine mesh grill.



JCB TRACKED EXCAVATOR | JS 460L



TRACK DRIVE

Type	Fully hydrostatic, epicyclic gearbox, three speed with autoshift.
Service brake	Hydraulic counter balance valve to prevent overspeeding on gradients.
Park brake	Disc type, spring applied, automatic hydraulic release.
Gradeability	70% (35 degree) continuous.
Travel speed – high	4.0 km/h (2.4 mph)
Travel speed – mid	2.7 km/h (1.6 mph)
Travel speed – low	2.0 km/h (1.2 mph)
Tractive effort	38,700 kgf (85318 lbf)

EXCAVATOR END

Fitted with low maintenance bushes throughout the boom and dipper increasing service intervals up to 1000 hours. Monoboomb is standard on the JS460 along with a choice of 4 dipper lengths to suit the requirements of reach, dig-depth, loadover height and tearout. Reserve strength is built into the fully welded structures for hydraulic hammer and other tough operations. Heavy duty reinforced bucket tipping links are provided as standard.

OPERATOR STATION

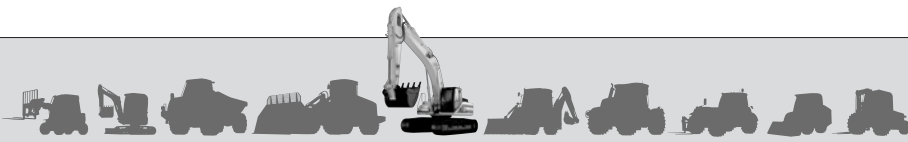
Press steel with high strength rolled section frame. All tinted safety glass window with fully opening two piece windshield and in shield stowage. Gas strut assisted. Parallelogram wash/wiper. Opening door windows. Air conditioning and heater with windshield defogger. Fully adjustable deluxe suspension seat with headrest, armrest and backrest recline. Seat and servo hand controls are trolley mounted for combined or independent adjustment – hand controls are forward and back adjustable. Radio cassette player with digital tuning. Cigarette lighter, digital clock, cup holder and storage area are standard.

AMS – ADVANCED MANAGEMENT SYSTEM

The JCB Advanced Management System matches engine power and pump output to optimize machine performance in each of the four selectable work modes –

H (Heavy)	100% engine and hydraulic power for maximum output
S (Standard)	90% engine and hydraulic power for economical output
L (Light)	70% engine and hydraulic power for precision grading and low fuel consumption
F (Fine)	70% power with permanent power boost for maximum lifting ability

The monitor and service tool can be used to check the function of pressure switches, solenoids and actual values on monitor gauges. It is easy to amend the preset languages shown on the monitor. Using a service tool additional languages can be made available. A maintenance indicator illuminates at the required service interval to make the operator aware of an imminent service. All servicing and basic checks can be carried out using the cab monitor display. A service tool connected to the monitor can be used for more detailed diagnostics and machine history analysis.



JCB TRACKED EXCAVATOR | JS 460L



CONTROLS

Excavator	All servo lever operated to ISO control pattern, independently adjustable to the seat.
Tracks	Individually servo operated by foot pedal or hand lever. Speed selection via foot operated switch with autoshift override.
Auxiliary	Via servo operated foot pedal.
Control isolation	Via gate lock lever at cab entrance or panel switch.
Engine speed	Dial type throttle control plus servo lever mounted one-touch control and separate selectable auto-idle.
Engine stop	Ignition key operated and separate shut-down button.
Power boost	Via servo lever mounted button.
Horn	Operated via servo lever mounted button.

SERVICE CAPACITIES

	litres (gallons)
Fuel tank	650 (143)
Engine coolant	48 (10.5)
Swing reduction gearbox (each)	8.5 (1.8)
Track reduction gearbox (each side)	9 (2.0)
Hydraulic system	450 (99)
Hydraulic tank	210 (46.5)

WEIGHTS & GROUND BEARING PRESSURES

Equipped with 7.10m (23ft 4in) boom, 3.36m (11ft 0in) dipper, standard duty bucket 2.2 cu.m (2.91 cu.yd), operator and full fuel tank.

Shoe width	Operating weight	Ground bearing pressure
600mm (24in)	45050kg (99318lb)	0.85kgf/sq.cm (12.09lbf/sq.in)
700mm (27.5in)	45560kg (100442lb)	0.74kgf/sq.cm (10.52lbf/sq.in)
800mm (31.5in)	46070kg (101567lb)	0.65kgf/sq.cm (9.24lbf/sq.in)
900mm (35.5in)	46820kg (103220lb)	0.59kgf/sq.cm (8.39lbf/sq.in)

BUCKETS

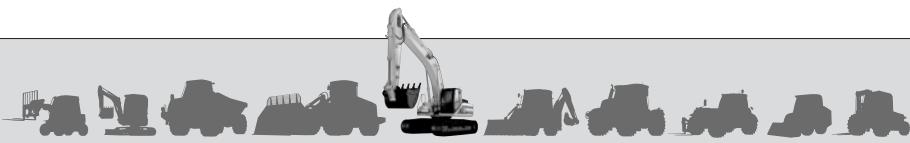
All buckets are JCB – ESCO fully welded steel, with sealed, hardened pivot pins and replaceable wear parts.

Max width	Capacity – SAE heaped
1200mm GP	1.39 cu.m (1.81 cu.yd)
1350mm GP	1.59 cu.m (2.07 cu.yd)
1500mm GP	1.84 cu.m (2.40 cu.yd)
1750mm GP	2.00 cu.m (2.61 cu.yd)
1900mm GP	2.25 cu.m (2.94 cu.yd)

STANDARD / OPTIONAL EQUIPMENT

Standard Equipment: Engine fan guard; Cold start pre-heat; Auto engine warm up; Double element air cleaner; Radiator fine mesh grille; Electric refuelling pump; Heavy duty alternator; Electrics isolator; Heavy duty batteries; Cab & engine soundproofing; Cab heater & screen demister; Air conditioning; Tinted glass; Radio & cassette player; Interior light; Coat hook; Cigarette lighter; Operator's storage box; Removable floor mat; Windscreen wash/wipe; Plug-in power socket; Power boost; Auto-idle; One-touch engine speed control; Boom/swing priority switch; Hydraulic cushion control; Plexus hydraulic oil filtration; HSP pressure test points; Auxiliary pipework mounting brackets; Work lights – boom & mainframe mounted; Undercarriage belly guarding; Upper structure under covers; Swing system cover; External mirrors; Handrail & nonslip pads.

Optional Equipment: Hose burst check valves & overload warning system; Tipping link mounted lift points; General purpose and heavy duty buckets; Quickhitch buckets; Hydraulic hammers; Auxiliary pipework (full and low flow); Cab guarding FOPS level II; Cab mounted & rear work lights; Rotating beacon; Rain guard; Biodegradeable oil; Sun visor; Air suspension seat. Full length track guides.

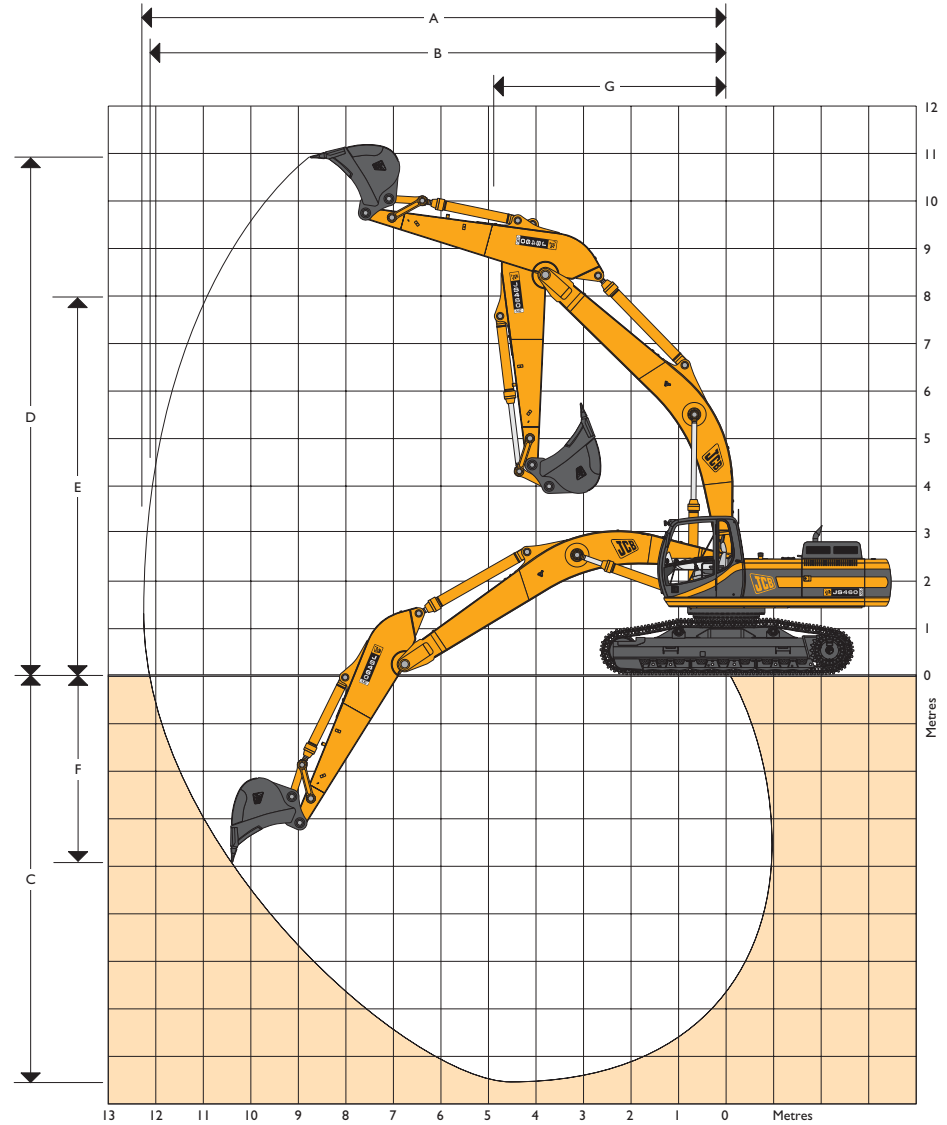


JCB TRACKED EXCAVATOR | JS 460L



WORKING RANGE

	4.76m (15ft 6in) Dipper arm	4.00m (13ft 1in) Dipper arm
A Maximum digging reach	13.13m (43ft 1in)	12.50m (41ft 0in)
B Maximum reach on ground	12.91m (42ft 4in)	12.28m (40ft 3in)
C Maximum digging depth	9.00m (29ft 6in)	8.37m (27ft 6in)
D Maximum digging height	11.55m (37ft 11in)	11.24m (36ft 11in)
E Maximum dumping height	8.46m (27ft 9in)	7.97m (26ft 2in)
F Maximum vertical cut depth	7.36m (24ft 2in)	6.94m (22ft 9in)
G Minimum swing radius	5.07m (16ft 8in)	5.01m (16ft 5in)
Bucket rotation	182 deg	182 deg
Dipper tearout	kgf (lbf) 14600 (32190)	16600 (36600)
Dipper tearout with boost	kgf (lbf) 15900 (35050)	18100 (39900)
Bucket tearout	kgf (lbf) 25100 (55340)	25100 (55340)
Bucket tearout with boost	kgf (lbf) 27500 (60630)	27500 (60630)
	3.36m (11ft 0in) Dipper arm	2.50m (8ft 2in) Dipper arm
A Maximum digging reach	11.94m (39ft 2in)	11.19m (36ft 8in)
B Maximum reach on ground	11.71m (38ft 5in)	10.94m (35ft 11in)
C Maximum digging depth	7.73m (25ft 4in)	6.87m (22ft 6in)
D Maximum digging height	11.08m (36ft 4in)	10.82m (35ft 6in)
E Maximum dumping height	7.80m (25ft 7in)	7.55m (24ft 9in)
F Maximum vertical cut depth	6.35m (20ft 10in)	5.55m (18ft 3in)
G Minimum swing radius	5.02m (16ft 6in)	5.23m (17ft 2in)
Bucket rotation	182 deg	182 deg
Dipper tearout	kgf (lbf) 18800 (41450)	22800 (50270)
Dipper tearout with boost	kgf (lbf) 20500 (45190)	24900 (54890)
Bucket tearout	kgf (lbf) 25100 (55340)	25100 (55340)
Bucket tearout with boost	kgf (lbf) 27500 (60630)	27500 (60630)





JCB TRACKED EXCAVATOR | JS 460L

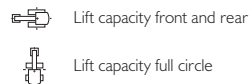


LIFT CAPACITIES – 4.76m (15' 6") Arm, 900mm (35.5") Shoes, Bucket – 1649kg (3635 lbs)

Load point	Reach from swing centre																	
	3m (9ft 10in.)		4m (13ft 1in.)		5m (16ft 5in.)		6m (19ft 8in.)		7m (23ft 0in.)		8m (26ft 2in.)		9m (29ft 6in.)		10m (32ft 10in.)		11m (36ft)	
	kg (lbs.)	kg (lbs.)	kg (lbs.)	kg (lbs.)	kg (lbs.)	kg (lbs.)	kg (lbs.)	kg (lbs.)	kg (lbs.)	kg (lbs.)	kg (lbs.)	kg (lbs.)	kg (lbs.)	kg (lbs.)	kg (lbs.)	kg (lbs.)	kg (lbs.)	kg (lbs.)
7m (23ft)												*6523 (14380)	6220 (13713)	*5220 (11508)	4974 (10966)			
6m (19.8ft)												*6883 (15174)	6100 (13448)	*6108 (13465)	4908 (10820)			
5m (16.5ft)																		
4m (13.1ft)																		
3m (9.10ft)																		
2m (6.6ft)																		
1m (3.3ft)																		
0m																		
- 1m (- 3.3ft)																		
- 2m (- 6.6ft)																		
- 3m (- 9.10ft)																		
- 4m (- 13.1ft)																		
- 5m (- 16.5ft)																		
- 6m (- 19.8ft)																		
- 7m (- 23ft)																		

LIFT CAPACITIES – 4.00m (13' 1") Arm, 900mm (35.5") Shoes, Bucket – 1649kg (3635 lbs)

Load point	Reach from swing centre																	
	3m (9ft 10in.)		4m (13ft 1in.)		5m (16ft 5in.)		6m (19ft 8in.)		7m (23ft 0in.)		8m (26ft 2in.)		9m (29ft 6in.)		10m (32ft 10in.)			
	kg (lbs.)	kg (lbs.)	kg (lbs.)	kg (lbs.)	kg (lbs.)	kg (lbs.)	kg (lbs.)	kg (lbs.)	kg (lbs.)	kg (lbs.)	kg (lbs.)	kg (lbs.)	kg (lbs.)	kg (lbs.)	kg (lbs.)	kg (lbs.)	kg (lbs.)	kg (lbs.)
7m (23ft)																		
6m (19.8ft)																		
5m (16.5ft)																		
4m (13.1ft)																		
3m (9.10ft)																		
2m (6.6ft)																		
1m (3.3ft)																		
0m																		
- 1m (- 3.3ft)																		
- 2m (- 6.6ft)																		
- 3m (- 9.10ft)																		
- 4m (- 13.1ft)																		
- 5m (- 16.5ft)																		
- 6m (- 19.8ft)																		
- 7m (- 23ft)																		



Notes: 1. Lift capacities are based on ISO 10567, that is 75% of minimum tipping load or 87% of hydraulic lift capacity, whichever is less.
Lift capacities marked * are based on hydraulic capacity.
2. Lift capacities assume that the machine is on firm, level ground and equipped with an approved lifting point and bucket.
3. Lift capacities may be limited by local regulations. Please refer to your dealer.



JCB TRACKED EXCAVATOR | JS 460L

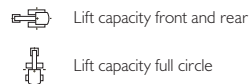


LIFT CAPACITIES – 3.36m (11' 0") Arm, 900mm (35.5") Shoes, Bucket – 1649kg (3635 lbs)

Load point	Reach from swing centre															
	3m (9ft 10in.)		4m (13ft 1in.)		5m (16ft 5in.)		6m (19ft 8in.)		7m (23ft 0in.)		8m (26ft 2in.)		9m (29ft 6in.)		10m (32ft 10in)	
	kg (lbs.)	kg (lbs.)	kg (lbs.)	kg (lbs.)	kg (lbs.)	kg (lbs.)	kg (lbs.)	kg (lbs.)	kg (lbs.)	kg (lbs.)	kg (lbs.)	kg (lbs.)	kg (lbs.)	kg (lbs.)	kg (lbs.)	kg (lbs.)
7m (23ft)																
6m (19.8ft)																
5m (16.5ft)																
4m (13.1ft)																
3m (9.10ft)																
2m (6.6ft)																
1m (3.3ft)																
0m																
- 1m (- 3.3ft)																
- 2m (- 6.6ft)																
- 3m (- 9.10ft)																
- 4m (- 13.1ft)																
- 5m (- 16.5ft)																
- 6m (- 19.8ft)																
- 7m (- 23ft)																

LIFT CAPACITIES – 2.50m (8' 2") Arm, 900mm (35.5") Shoes, Bucket – 1649kg (3635 lbs)

Load point	Reach from swing centre															
	3m (9ft 10in.)		4m (13ft 1in.)		5m (16ft 5in.)		6m (19ft 8in.)		7m (23ft 0in.)		8m (26ft 2in.)		9m (29ft 6in.)		10m (32ft 10in)	
	kg (lbs.)	kg (lbs.)	kg (lbs.)	kg (lbs.)	kg (lbs.)	kg (lbs.)	kg (lbs.)	kg (lbs.)	kg (lbs.)	kg (lbs.)	kg (lbs.)	kg (lbs.)	kg (lbs.)	kg (lbs.)	kg (lbs.)	kg (lbs.)
7m (23ft)																
6m (19.8ft)																
5m (16.5ft)																
4m (13.1ft)																
3m (9.10ft)																
2m (6.6ft)																
1m (3.3ft)																
0m																
- 1m (- 3.3ft)																
- 2m (- 6.6ft)																
- 3m (- 9.10ft)																
- 4m (- 13.1ft)																
- 5m (- 16.5ft)																
- 6m (- 19.8ft)																
- 7m (- 23ft)																



- Notes:** 1. Lift capacities are based on ISO 10567, that is 75% of minimum tipping load or 87% of hydraulic lift capacity, whichever is less.
Lift capacities marked * are based on hydraulic capacity.
2. Lift capacities assume that the machine is on firm, level ground and equipped with an approved lifting point and bucket.
3. Lift capacities may be limited by local regulations. Please refer to your dealer.



A GLOBAL COMMITMENT TO QUALITY

JCB's total commitment to its products and customers has helped it grow from a one-man business into Britain's largest privately owned manufacturer of backhoe loaders, crawler excavators, wheeled excavators, telescopic handlers, wheeled loaders, dump trucks, rough terrain fork lifts, industrial fork lifts, mini/midi excavators, skid steer loaders and tractors.

By making constant and massive investments in the latest production technology, the JCB factories have become some of the most advanced in Europe.

By leading the field in innovative research and design, extensive testing and stringent quality control, JCB machines have become renowned all over the world for performance, value and reliability.

And with a global sales and service network of over 400 distributors and agents, the company exports over 70% of its production to all five continents.

Through setting the standards by which others are judged, JCB has become one of Britain's most impressive success stories.

