

BM-VOLVO

TERRAIN CHASSIS TC 860

**the answer
to your off-road
hauling**



Now . . .

A new, multi-purpose vehicle . . . BM-VOLVO TC 860

Developed from the time-proven and field tested BM-VOLVO dumper DR 860. Designed and built for your kind off-road hauling. For heavy equipment and materials hauling in terrains where other vehicles won't go.

With an amazing range of application areas.

Mount a water tank to help stop forest fires. Or use it for log hauling. Or forest fertilization. Or cable laying. Use it as a drilling unit. Or rescue vehicle. And much, much more.

Roads?

Forget them. Because the TC 860 doesn't need them. It goes anywhere, everywhere. With peak performance, versatility and mobility all year around.

Result?

A nice solution to your off-road hauling. A vehicle with the performance to provide your returns all year around.

Loaded with features you'll like

Loading capacity more than 18 tons. Four-wheel drive. Differential locks. Six-wheel ground contact at all times. 15 SAE hp six-cyl. turbo-charged Volvo diesel. 7.5 m (24 ft) turning radius. Excellent oscillation. 45 degree articulated steering. An exclusive tandem axle bogie design. Big wheels for maximum traction and flotation. Power steering and brakes (disk front). Four-speed Power Shift, forward and reverse. Wide stance. High axle clearance. A completely insulated safety cab.

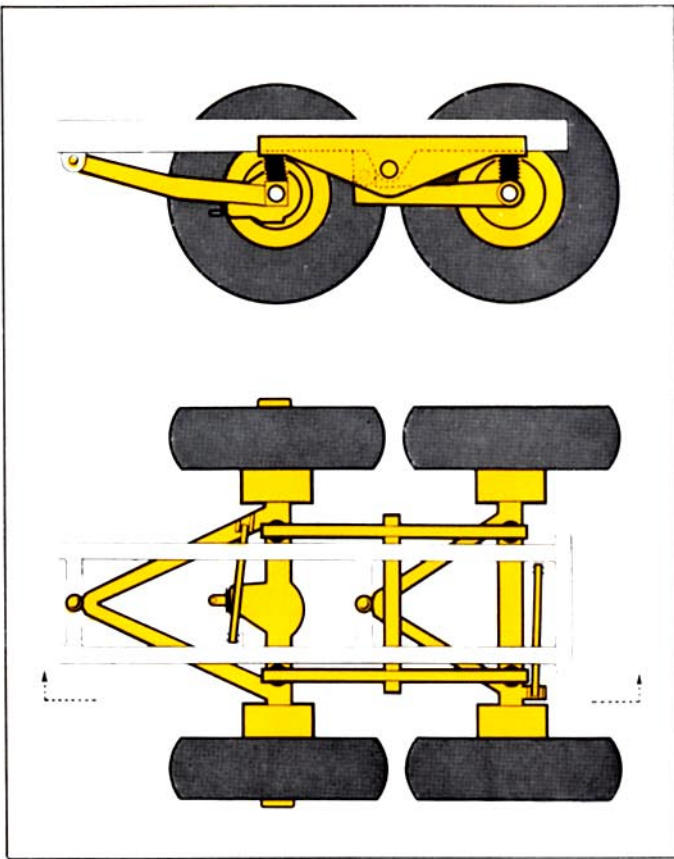
Features that provide easy driving or duck-walking through deep mud or snow. Over logs and rocks. Uphill, downhill and sidehill.

All in one machine. The BM-VOLVO TC 860.

One machine?

See for yourself.



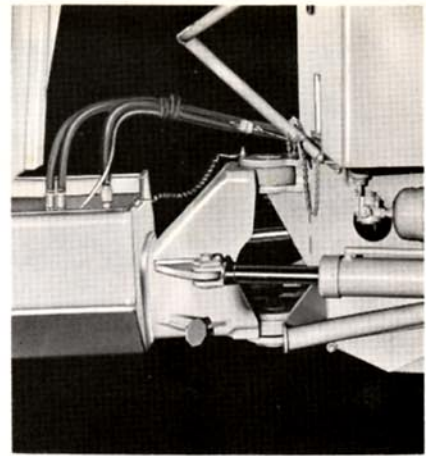
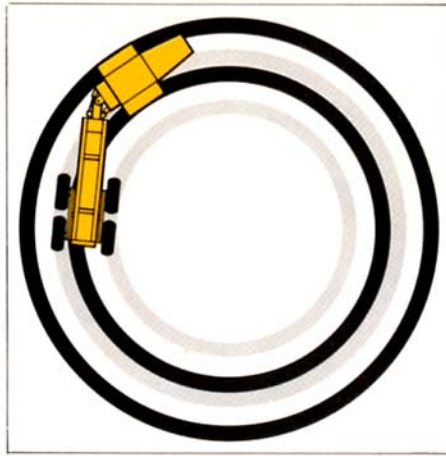


**Loaded
with features
that spell productivity
in any terrain**

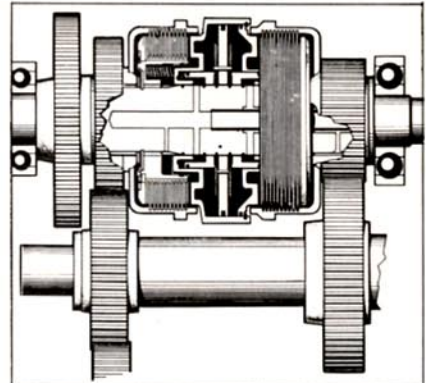
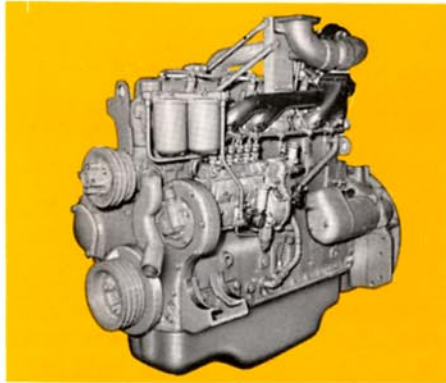
A unique tandem axle bogie. It's the key to unsurpassed off-road performance. Provides six-wheel ground contact at all times. There's no direct suspension between the chassis and the axles. Instead, two pivoting bars equalize the load on the axles. Each bogie axle has independent oscillation and is mounted on the A-frame center in ball joint. Cross rods maintain the right axle angles.



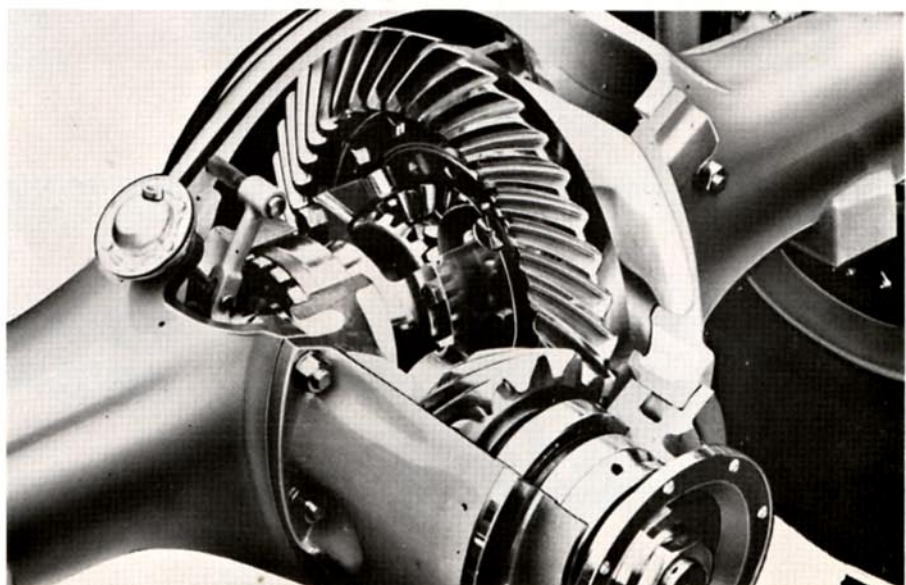
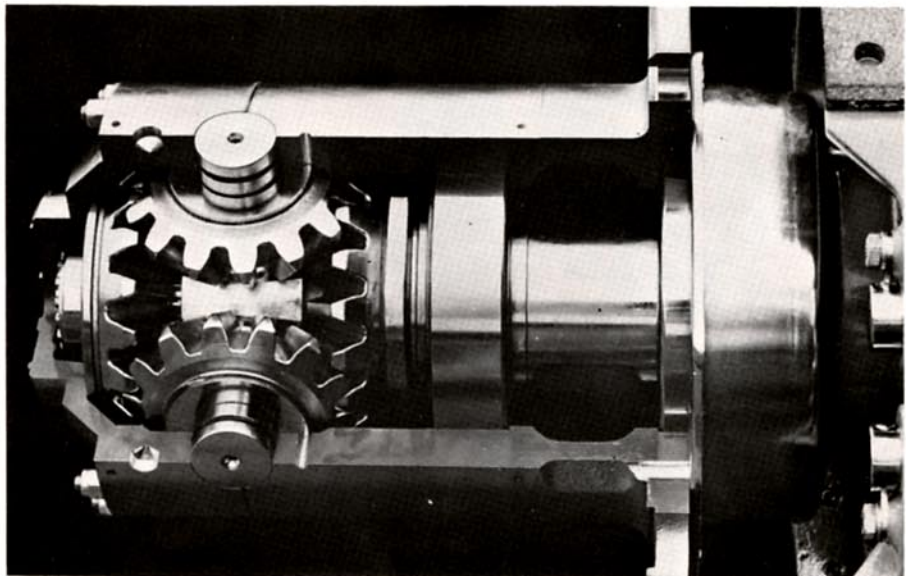
45 degree articulated power steering. Combine power steering, differential locks and 45 degree articulation and duck-walk out of deep mud or up a steep hill. The articulated steering provides full tractive power also in turns. And, it provides an extremely tight turning radius: 7,5 m (24 ft) with full visibility.



150 hp turbo-charged Volvo diesel engine.. A true Volvo engine with fuel injection, built for turbo-charging. Result? Efficient combustion of the fuel. Higher engine output. Lower fuel consumption. Cleaner exhaust. It all adds up to an engine that responds quicker, runs smoother, lugs better and lasts longer. The torque converter and Power Shift make the TC 860 a fast machine with effortless, on-the-go controls.



4-wheel drive, differential locks and hub reducing gearing. Features that provide the go-anywhere mobility. Exclusive feature: the 4-wheel drive can be engaged on-the-go in low speed gears. Disengaging for high speed driving is just as easy. This eliminates unnecessary transmission stress. Both power axles feature differential locks. The locks can be engaged individually or simultaneously. The hub reduction gearing reduces speed by half at the driving wheels at the same time as it increases the torque by two. The hub reduction gearing is combined with very rugged hypoid gearing. Since it need only take care of half the speed reduction, a large pinion could be fitted, thereby distributing the load over a large gear wheel area.





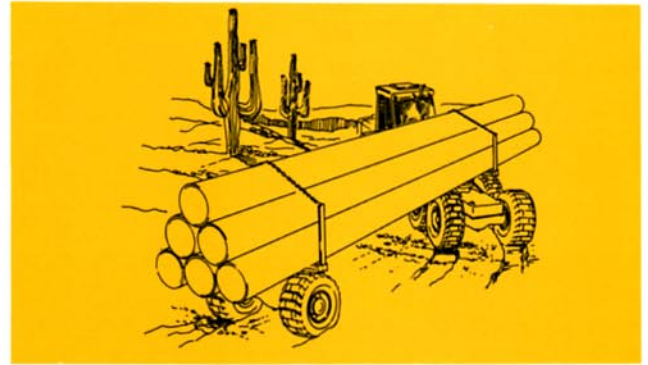
15,000 l (4,000 gallon) tank for forest fire fighting or other liquid transports.



Equipped for log or pulpwood hauling with crane and stakes.



TC 860 for heavy log hauling with bunks, stakes and winch.



Dolly with turn-table for hauling of pipes, rails, poles, logs etc.



Equipped with forest fertilizer unit.



Different types of bodies for sugar canes, pine apple, wood chips etc.



Equipped with concrete mixer.



Drilling rig for prospecting purposes.



Equipped with dual cable laying rolls.

YOUR OFF-ROAD HAULING?

Your BM-VOLVO dealer will be happy to help. Write or call him now.

And comfort and ease of operation you'll like

Big, comfortable R.O.P.* safety cab
The cab is completely insulated

from the engine compartment and the frame. This keeps the noise level at a minimum.

Safety? The cab is R.O.P. tested to meet the most rigid standards. The rear window has a sturdy mesh guard.

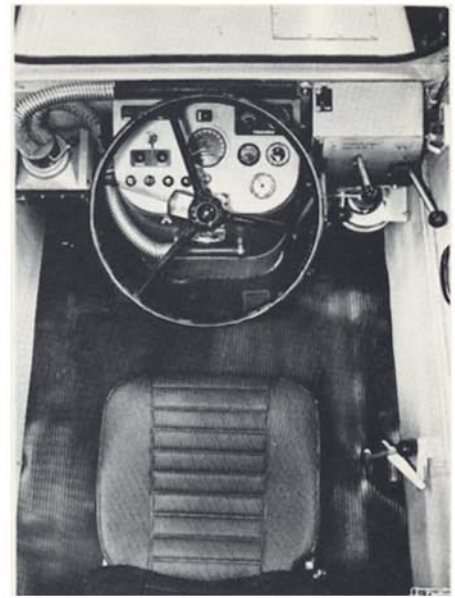
Inside the cab, a flat floor with plenty of stretch-out room. 360 degree visibility. Controls in easy and natural reach. Gauges you see at a glance. And a seat that

can be adjusted to fit any driver. Seat features parallel linkage suspension and hydraulic shock absorbers.

And more. Man-sized grips and step for easy-on, easy-off. Doors that can be locked in open position and that have sliding ventilating windows.

There's only one way you can appreciate the cab. By trying it yourself.

* R.O.P. (Roll Over Protected)



BM-VOLVO TC 860 Specifications

OVERALL DESIGN 6-wheel unit with 4-wheel drive, unique bogie with independent axles, articulated steering and oscillation.

HORSEPOWER (SAE at 2500 rpm) 6-cyl turbo-charged Volvo diesel 150 hp.

ELECTRICAL SYSTEM 12 volt swing-out battery. 12 volt AC alternator, 475 W.

TRANSMISSION Power Shift and torque converter; four forward and four reverse speeds hydraulically shifted by a single lever. Hydraulically activated wet-disk clutches. 4-wheel drive engaged and disengaged by pneumatic/mechanical control. Air operated differential locks on both power axles.

TRAVEL SPEEDS Forward and reverse; High-Low; 30 km/h (18.6 mph).

TIRES Front std.: 18x25/16. Optional: 18x25* XR. Rear std.: 16x24/16. Optional: 20.5x25* XR.

STEERING Articulated Power Steering with two double-acting hydraulic cylinders. Turning radius 7,5 m (24 ft). Full tractive power also in curves.

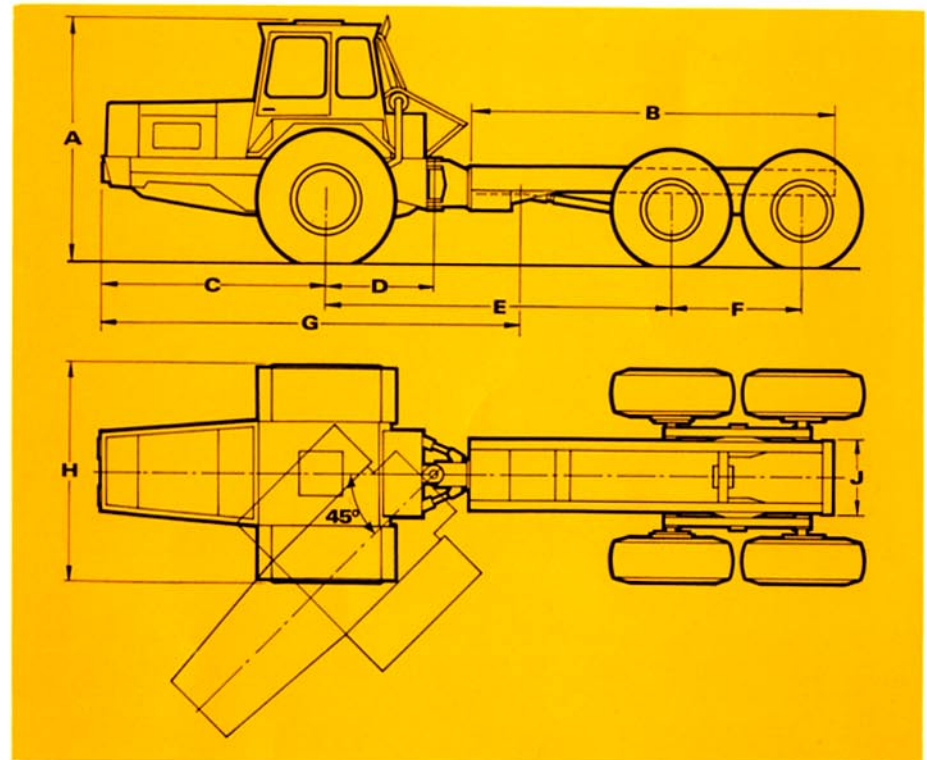
BRAKES 6-wheel power brakes (disk front). 4-wheel parking brake. Automatic emergency brake on rear power axle. Exhaust brake optional.

HYDRAULICS Vane pump 140 l/m (37 gpm) at 2500 rpm. 1,700 psi operating pressure.

WEIGHTS Total chassi 9,700 kg (21,400 lbs). Payload incl. built-on equipment, 18,800 kg (41,000 lbs).

Design, materials and/or specifications are subject to change without notice and without liability therefor.

A	2830	mm	(111 in)
B	4270	..	(168 in)
C	2636	..	(103 in)
D	1283	..	(50 in)
E	4053	..	(154 in)
F	1540	..	(60 in)
G	4900	..	(192 in)
H	2500	..	(48 in)
J	935	..	(37 in)



For more information about TC 860 and how it may fit your needs, call or write your local BM-VOLVO dealer.



BOLINDER-MUNKTELL

— a member of the Volvo Corporation,
Eskilstuna, Sweden