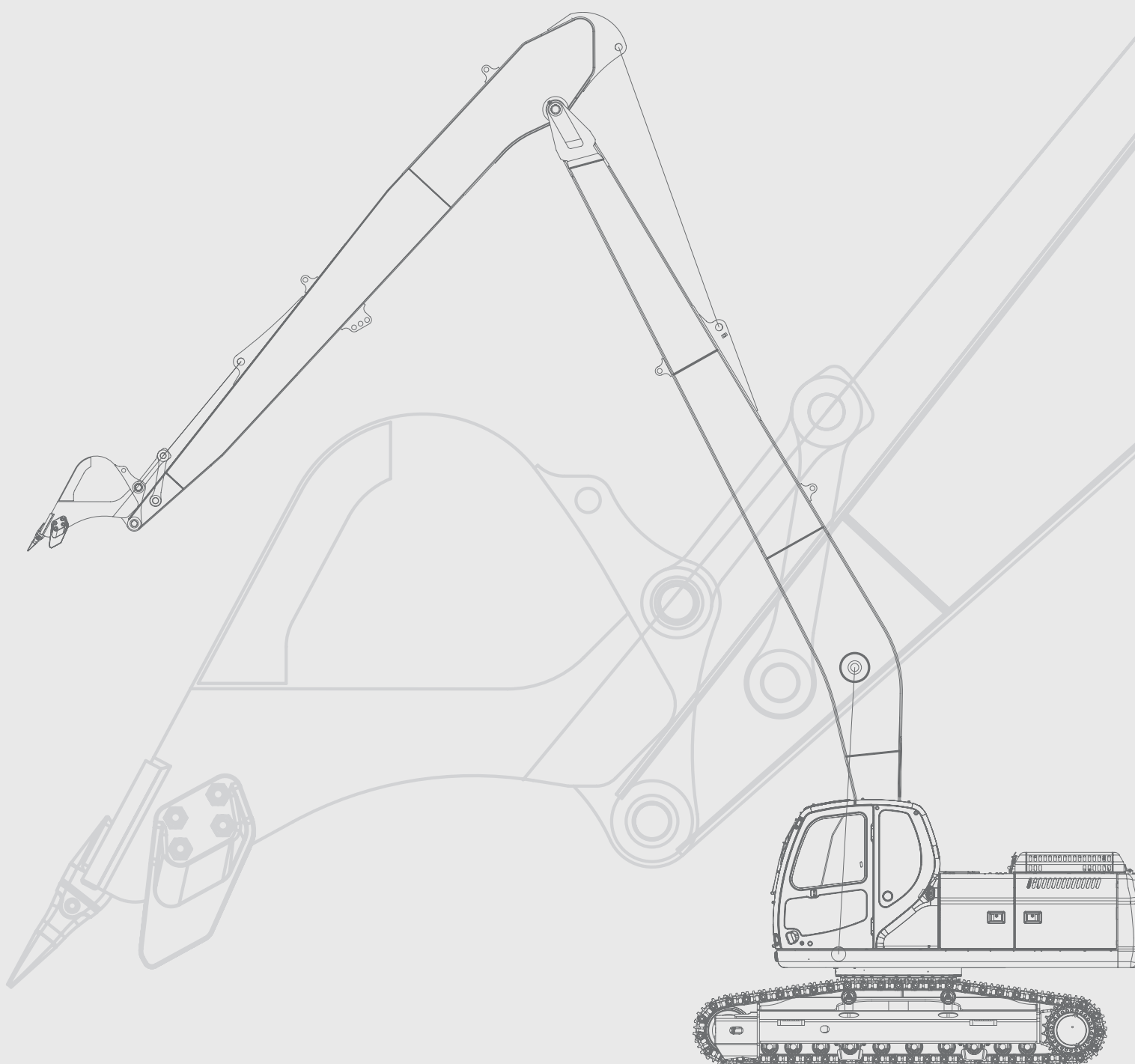


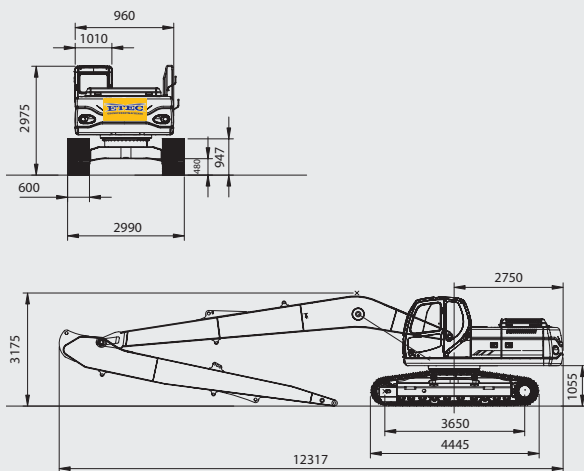
Engine power:	822-II SLR 110 kW / 148 Hp at 1.900 rpm	826-II SLR 129 kW / 173 Hp at 1.900 rpm	830-II SLR 147 kW / 197 Hp at 1.900 rpm	850-II SLR 245 kW / 328 Hp at 1.800 rpm
Operational weight:	22.860 kg	27.250 kg	30.000 kg	50.200 ~ 50.800 kg
Bucket capacity (SAE):	0,39 m ³	0,50 m ³	0,64 m ³	0,93 ~ 1,27 m ³



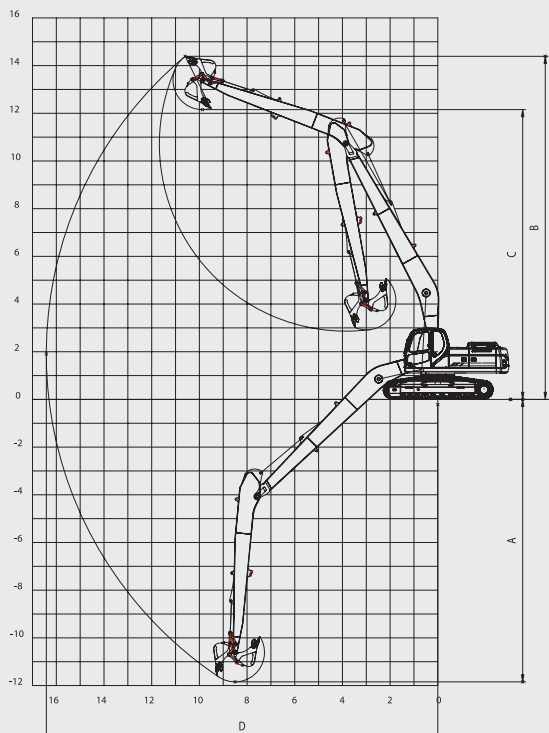
Dimensions & working range

ETEC 822-II SLR

Dimensions



Working Ranges



Operating weight	kg	22.860
Bucket		
Capacity SAE	m ³	0,39
Engine		
Model		DOOSAN DLo6
Displacement (Total dis. volume)	cc	5.890
Rated power/R. P. M.	Hp/rpm	148/1.900
	kW/rpm	110/1.900
Front		
Boom	mm	8.500
Arm	mm	6.200
Dimensions		
Shipping height (Boom)	mm	3.175
Shipping length	mm	12.317
Shipping width	mm	2.990
Working Range		
(A) Max. digging depth	mm	11.661
(B) Max. digging height	mm	13.403
(D) Max. digging reach	mm	15.379
Rear-and swing radius	mm	4.714
Performance		
Max. digging force Bucket	kgf	8.600
* At power boost Arm	kgf	5.890
Traveling speed	km/h	5,5/3,0
Swing speed	rpm	11
Hydraulics		
Pump Type		Variable, Axial Piston
Max. flow rate	l/min	2 x 211
Main relief set pressure	kg/cm ²	350 / 330
Track		
Shoe width	mm	600
Tumbler distance	mm	3.650
Control		
Lever control type		Hydraulic pilot
Lever pattern		ISO
Tank		
Fuel tank	l	400
Hydraulic tank	l	240
Ground pressure	kg/m ²	0,48