

E175W EVOLUTION



PRELIMINARY

Net flywheel power **112 kW – 152 HP**

Max operating weight **18050 kg**

Bucket capacity **da 0,25 a 0,93 m³**



EVOLVING TECHNOLOGY

Technical features



Tier 2 emissioned engine

Net flywheel power (ISO 14396).....	112 kW/152 HP
Rated rpm	2000
Make and model	IVECO F4BE0684B
Type.....	diesel, 4 stroke, direct injection, supercharged with aftercooler
Total displacement	5.9 l
Number of cylinders	6
Bore x stroke	102 x 120 mm

Fuel and engine oil filters located remote for easy replacement

Engine rpm electronic control

Automatic idling return switch with controls in neutral - auto idling

Engine rpm storage device

Standard electronic anti-theft device

Start at -20 ° external temperature supplied as standard equipment (optional start at -25 °)

The engine conforms to EEC 97/98 STAGE 2 and USA CARB and EPA TIER 2 standards.



Electrical system

Operating voltage	24 V
Maintenance-free batteries supplied standard	2
Capacity	100 Ah
Alternator	70 A
Starter motor	4 kW



Hydraulic system

New Smart Hydraulic System for improved controllability and all simultaneous movements. Closed circuit Load Sensing.

Automatic Priority System device.

Engine Speed Sensing Control device and hydraulic pump electronic control for total installed power use.

Swing Pressure Control device for outstanding controllability and high operating comfort during superstructure acceleration/stop.

Flow Pump Saving and Shock Less System circuits to minimise oil at discharge and ensure perfectly homogeneous movements.

Easy To Use multi-function monitor incorporating:

- clock
- maintenance program
- Self Diagnosis system
- travel speed
- engine rpm

Hammer/2-directional pincer system supplied standard

Independent hammer/pincer and positioner cylinder (triple articulation version).

Main pump – maximum delivery:

implement/travel circuit	252 l/min
superstructure slewing circuit	125 l/min

Maximum operating pressure:

implement/travel circuit	350 MPa
superstructure slewing circuit	200 MPa

Hydraulic cylinders

- lift

- bore x stroke (monobloc)

- bore x stroke (triple articulation)

- dipper stick

- bore x stroke

- bucket

- bore x stroke

- dipper stick (only triple articulation)

- bore x stroke

Hydraulic travel end cylinders. Less implement stress and increased operator comfort.



Transmission

Automatic or manual control with variable displacement hydraulic motor and 2-speed synchronised gearshift (work and travel) for speed control with excavator on the move. Gear shifting consent from travel to to operating speed is managed by the on-board computer, to ensure maximum operator comfort and safety.

Lower travel speeds can be selected with a lever. The transmission is

provided with a **Travel Motor Displacement Control device**, to minimise service brake use in downhill travel.

Speeds	km/h	Max (%) slope
Operating:		
fast	0 ÷ 8,9	65
slow	0 ÷ 3,6	
Travel:		
fast	0 ÷ 37,2	13
slow	0 ÷ 13,9	

Creep Speed (optional). 0 ÷ 1.7 km/h for maximum hydraulic pump delivery at low travel speeds.



Superstructure slewing

Slewing motor

Slewing brake

Final drive

Circle

Slewing speed



Axles

New axles complete with oil bath disc brakes mounted directly on wheel hubs. Rigid rear axle.

Oscillating front axles: oscillation

The front axle can be locked hydraulically in any position:

safety valves lock the axle in case of a breakdown.



Braking system

Service brakes: oil bath disc type acting on all four wheels.

Operating brake: acting on service brakes plus front axle oscillation lock.

Parking brake: mechanical spring type acting on the transmission.

Emergency brake: double braking circuit and automatic parking brake insertion with engine cut out.



Steering system

Type

Pump

Double stem cylinder

Steering with engine cut out and excavator on the move.

Steering radius

Minimum steering radius with twinned tyres



Tyres

Twinned wheels

Single wheels

600/40 – 22.5



Supplies

Engine litres

Lube oil

Antifreeze

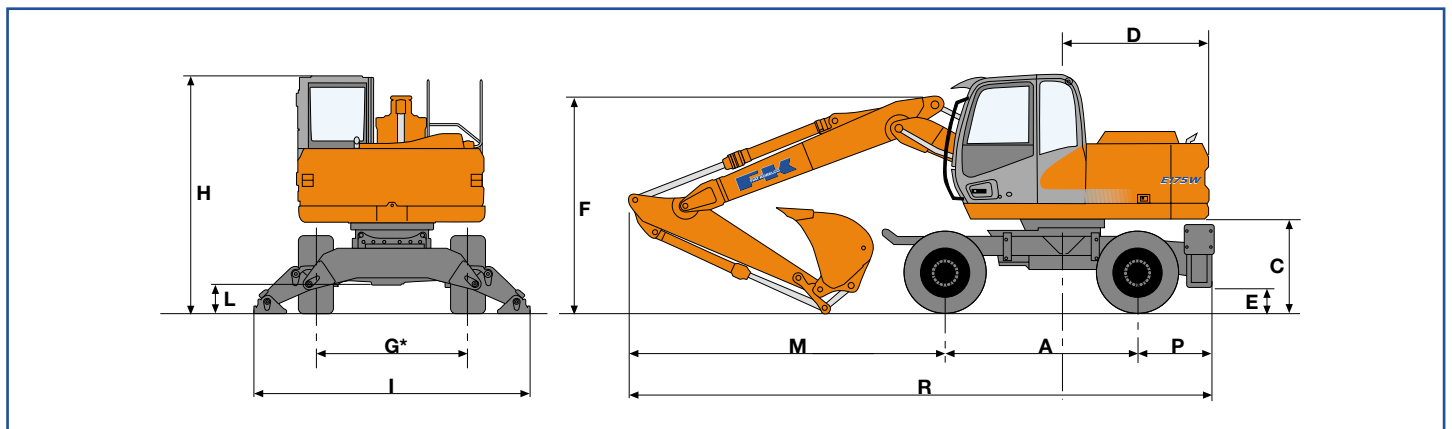
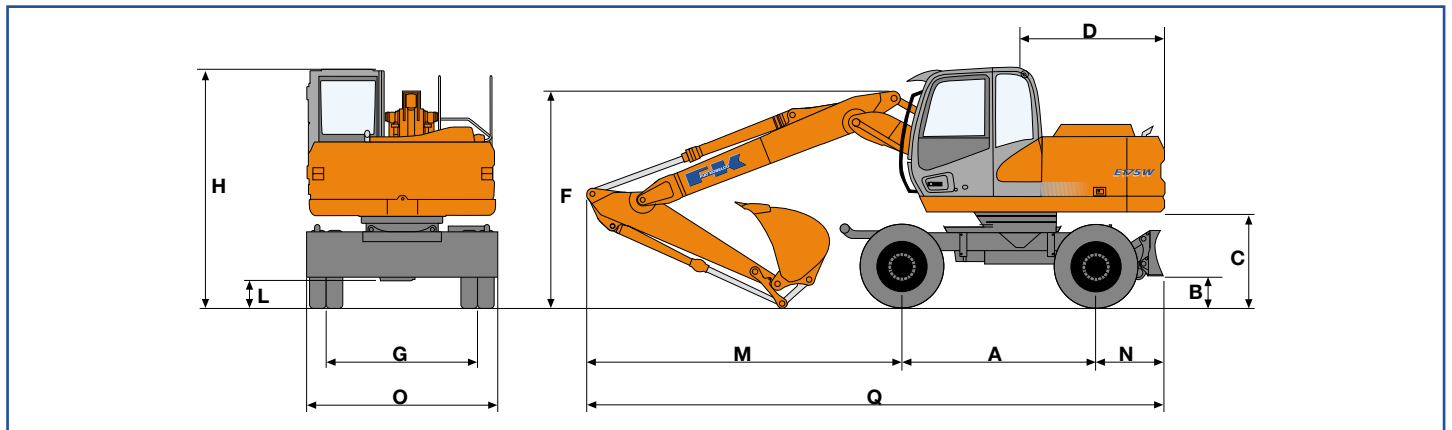
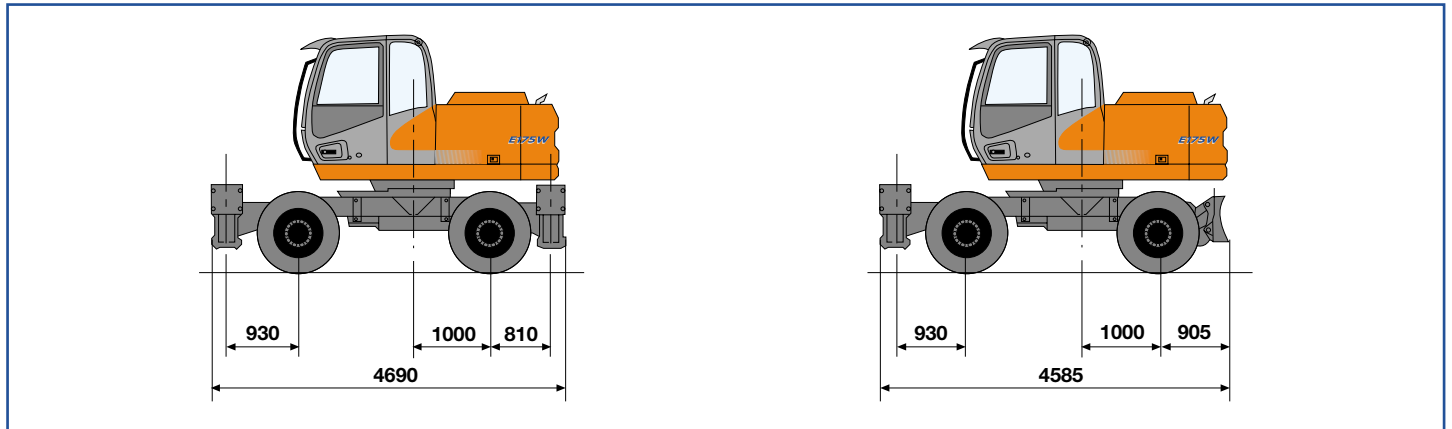
Fuel

Hydraulic system

Triple articulation

Equipped with twinned 10.00 - 20 tyres

Dimensions (mm)



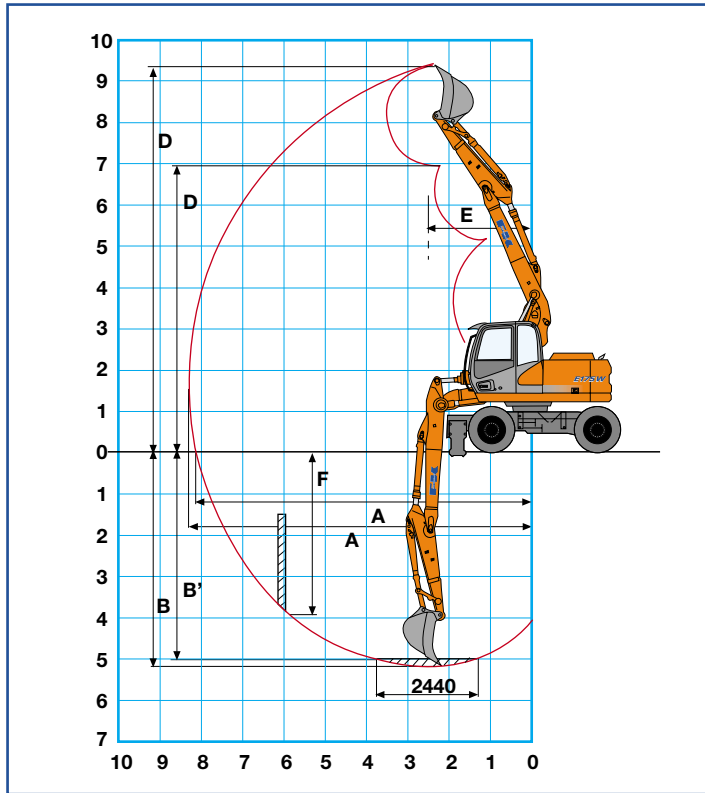
Dipper stick	A	B	C	D	E	F	G*	H	I	L	M	N	O	P	Q	R
2200(1)	2550	415	1220	2145	320	3075	2000	3140	3625	340	4370	905	2530	1005	7825	7925
2400 (2)	2550	415	1220	2145	320	3040	2000	3140	3625	340	4390	905	2530	1005	7845	7945
2700	2550	415	1220	2145	320	3100	2000	3140	3625	340	4390	905	2530	1005	7845	7945
3100	2550	415	1220	2145	320	3400	2000	3140	3625	340	4385	905	2530	1005	7840	7940

(1) (2) Booms approved for unescorted road travel

* With single 18R 19.5 XF TL tyres:2000 mm
 single 600/40 - 22.5:1950 mm

Triple articulation

Diggability



Dipper stick	mm	2200*	2400*	2700	3100
A	mm	8670	8870	9130	9440
A'	mm	8490	8695	8960	9275
B	mm	5510	5710	6000	6350
B'	mm	5330	5540	5830	6185
C	mm	9390	9565	9710	9870
D	mm	6495	6670	6825	6990
E	mm	3165	3195	3340	3220
F	mm	4535	4755	5020	5315

Breakout force:					
bucket	kg	9900	9900	9900	9900
dipper stick	kg	8500	7700	6900	6050

* Approved for unescorted road travel

Operating weights

Equipped with twinned 10.00 - 20 tyres

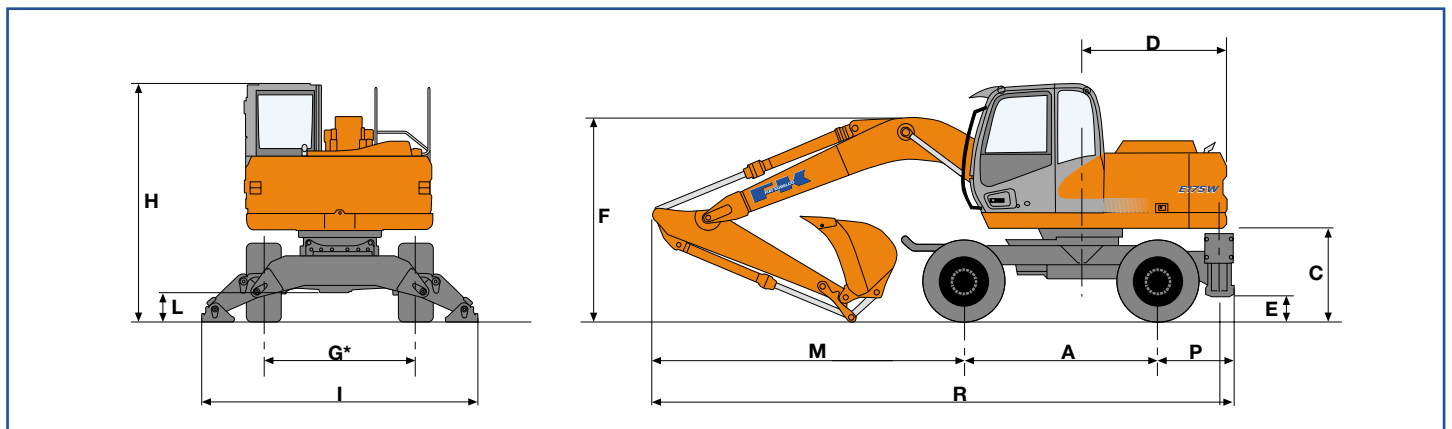
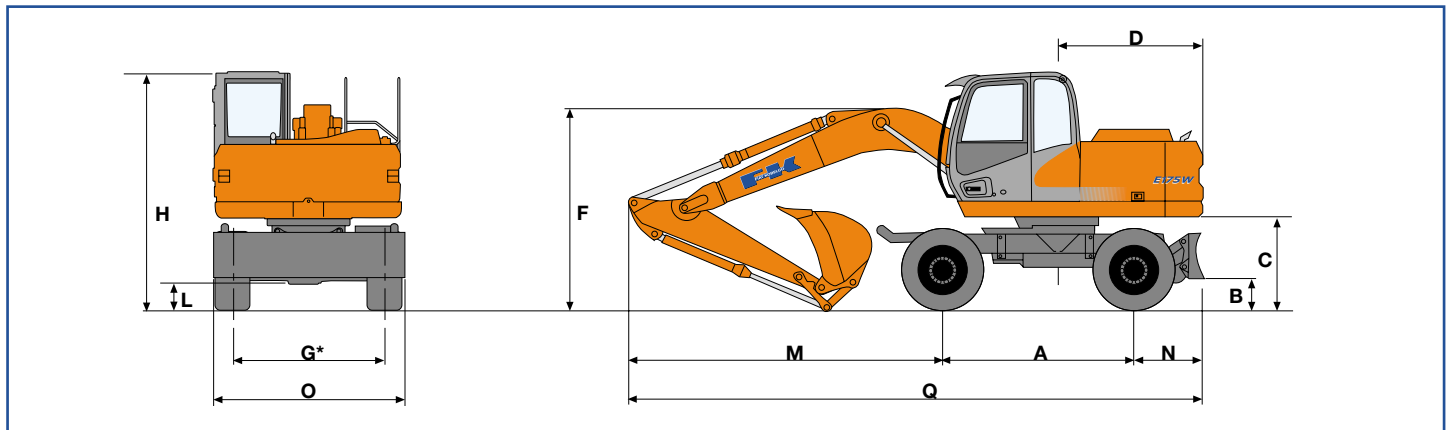
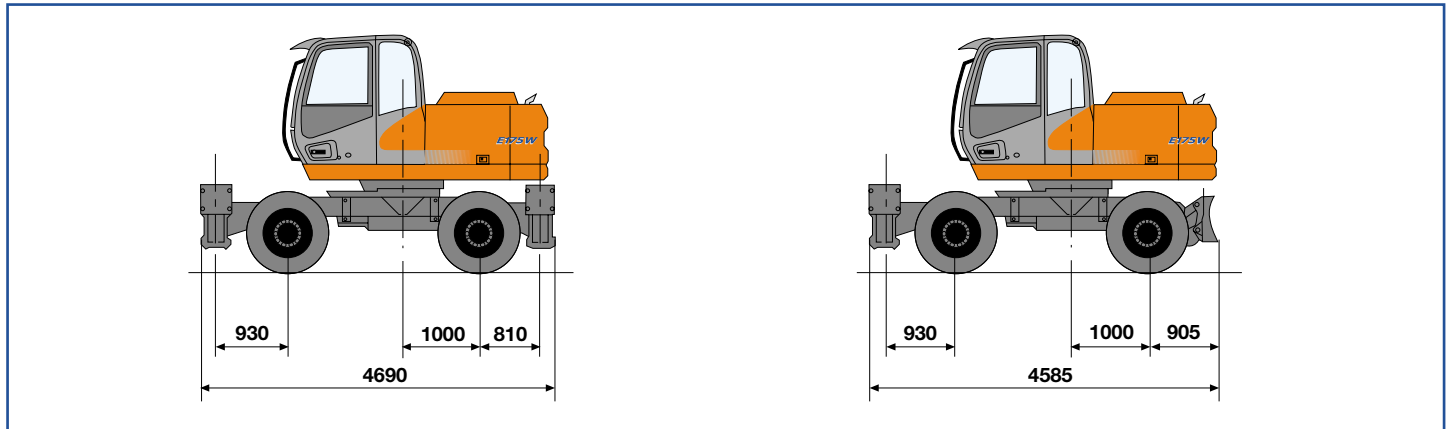
Dipper stick (mm)	Two stabilisers (kg)	Four stabilisers (kg)	Blade (kg)	Blade and stabilisers (kg)
2200	16800	17900	16400	17500
2400	16850	17950	16450	17550
2700	16900	18000	16500	17600
3100	16950	18050	16550	17650



Monobloc

Equipped with single 18 - 19.5 tyres

Dimensions (mm)

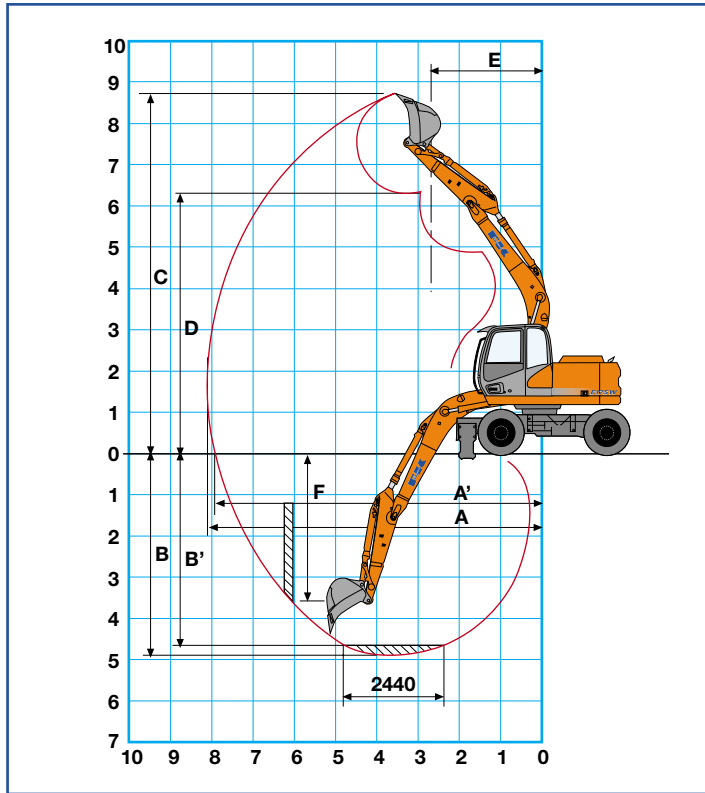


Dipper stick	A	B	C	D	E	F	G*	H	I	L	M	N	O	P	Q	R
2200	2550	415	1220	2145	320	2995	2000	3140	3625	340	4735	905	2530	1005	8190	8290
2400	2550	415	1220	2145	320	3060	2000	3140	3625	340	4725	905	2530	1005	8180	8280
2700	2550	415	1220	2145	320	3230	2000	3140	3625	340	4695	905	2530	1005	8150	8250
3100	2550	415	1220	2145	320	3590	2000	3140	3625	340	4465	905	2530	1005	7920	8025

* With twinned 10.00 - 20 tyres:2000 mm
 twinned 600/40 - 22.5:1950 mm

Monobloc

Diggability



Dipper stick	mm	2200	2400	2700	3100
A	mm	8825	9020	9270	9560
A'	mm	8645	8850	9100	9395
B	mm	5505	5705	6005	6180
B'	mm	5275	5495	5805	9110
C	mm	8840	8990	9055	6410
D	mm	6085	6230	6325	3205
E	mm	3395	3365	3440	5130
F	mm	4490	4705	4860	5820

Breakout force:					
bucket	kg	9900	9900	9900	9900
dipper stick	kg	8500	7700	6900	6050

Operating weights

Equipped with twinned 10.00 - 20 tyres

Dipper stick (mm)	Two stabilisers (kg)	Four stabilisers (kg)	Blade (kg)	Blade and stabilisers (kg)
2200	16350	17450	15950	17050
2400	16400	17500	16000	17100
2700	16450	17550	16050	17150
3100	16500	17600	16100	17200



Standard equipment

Electronic accelerator complete with engine rpm storage push button
 Immobiliser electronic anti-theft device
 Maintenance toolkit
 Horn
 Maintenance-free batteries
 Triple articulation monobloc boom
 2200 mm dipper stick
 Cab complete with transparent canopy, rain protection, front and rear sunshield, parallelogram windshield wiper
 Hydraulic cylinders with hydraulic travel end device
 Electrical vertical adjustment instrument panel
 Centralised pressure control
 Auto-Idling device
 Fuel electrical pump
 Cab lights
 Cyclone pre-filter dry air filter
 Remote location engine fuel/oil filter
 Oil bath disc brakes in wheel hubs
 Lift hook on bucket levers
 24V electrical system

Load Sensing hydraulic system with hydraulic power electronic control
 Centralised boom lubrication
 Multi-function manipulators
 Easy To Use multi-function monitor
 Travel and slewing motor with automatic disc brakes
 Road travel certification
 Mechanical lock/unlock brake pedal
 Cell phone holder
 Operator compartment with automatic conditioning
 Pedal control hammer /pincer predisposition
 Travel motor protection predisposition
 Grapple bucket swing predisposition
 Radio with load speakers
 Grease bath circle
 10.00 - 20 twinned wheels
 Heated mechanical control seat
 Automatic or manual shift hydrostatic transmission
 Lift, penetration anti-drop valve with integrated spool

Optional equipment

-25 °C cold start
 Multi-use, rock and heavy duty buckets
 2400 mm dipper stick
 2900 mm dipper stick
 3100 mm dipper stick
 Left toolkit
 Creeper speed (1.7 km/h)
 Front blade and rear stabilisers
 Rear blade

Gearshift protection
 18 - 19.5 single wheels
 600 - 40 - 22.5 single wheels
 Left ladder
 Heated compressed air seat
 Front and rear stabilisers
 Rear stabilisers
 Hammer/pincer hydraulic piping
 Grapple bucket hoses

Buckets

SAE capacity	CECE capacity	Width	Weight
0,25 m ³	0,23 m ³	500 mm	280 kg
0,45 m ³	0,41 m ³	750 mm	350 kg
0,54 m ³	0,48 m ³	850 mm	400 kg
0,67 m ³	0,61m ³	1000 mm	480 kg
0,84 m ³	0,74 m ³	1200 mm	530 kg
0,93 m ³	0,81 m ³	1300 mm	580 kg

At your dealership

The information contained in this catalog is supplied for information only. The manufacturer may introduce changes to the models described herein at any time for technical or commercial reasons. The illustrations of this document do not necessarily show the product in the standard version. For further information Customers are kindly required to refer to the closest Dealership.

Published by FIAT KOBELCO CONSTRUCTION MACHINERY S.p.A. - <http://www.fiatkobelco.com>
LEADER Firenze - Printed in Italy - SatizMSX (Turin - Italy) - Printed n. 60055 - INB 04/03



EVOLVING TECHNOLOGY