

WX

SERIES

WHEELED EXCAVATORS

WX145

CASE



P R O F E S S I O N A L P A R T N E R

NEW GENERATION... NEW

MAINTENANCE

- Latest generation CASE Family III engine
- Compact upperstructure with catwalk for better service access
- Self diagnosis integrated into the electronic management system
- Longer service intervals (500 hrs oil change interval)
- Easy and simple service point access
- Ecological engine oil drainage cap

COMFORT

- Air suspension seat
- Fully glazed cab for outstanding all-round visibility
- Full up and over front windscreen
- Automatically operating brake system
- Automatic front axle lock
- Forward/reverse control on joystick
- Dozer blade and stabilisers fine control on joystick
- Simple to select operating modes
- "DIGIPOWER" management control of all hydraulic functions
- Transparent roof
- Tilttable steering column
- Fine grading control mode
- Swing brake modes
- Electric refuel pump
- One key for all locking functions



DESIGN... CASE CONTINUITY

PERFORMANCE

- Compact upperstructure
- Lifting capacity equivalent to conventional design models
- 30 km/h top speed
- PowerShift gear box, on the move gear shifting
- Superior engine power
- High swing torque
- Improved tractive effort
- PowerBoost
- Hydraulic tool pressure and flow pre-setting
- Hydraulically driven fan with thermostatic regulation
- Full stabiliser and blade independence
- Total chassis versatility
- Independent swing hydraulic circuit
- Mechanically lockable large section stabiliser pads
- Buckets interchangeable with CASE CX range
- Quick couplers for previous WX range buckets
- Quick connectors on hydraulic option circuits

SAFETY

- Unique CASE Inching and extra slow speed
- Integrated anti theft device
- Engine safe warm up control
- Road travel mode with swing and attachment circuit cut out
- Automatic battery cut off
- Stabiliser cylinder protection



ENGINE

Make	CASE - Family III
Model	659TA-M2
Type	4 cyl. turbo charged, direct injection, intercooler
Displacement	3.9 l
Bore x stroke	102 x 120 mm
Output power (ISO 14396)	87 kW/117 hp
Rated speed	2000 rpm

The latest generation CASE Family III engines comply with the EU Tier II directive.

Modern, quiet, with low fuel consumption and designed for reliability, the CASE engine reduces owning and operating costs. Engine auto idle can be de-activated manually.



HYDRAULIC CIRCUIT

Main pumps	3 variable displacement, axial piston
Total maximum flow	2 x 125 + 80 l/min
Attachment maximum pressure/PowerBoost	345/370 bar
Travel maximum pressure	370 bar
Swing maximum pressure	390 bar

The "DIGIPOWER" hydraulic control system monitors the two main pumps, the separated "closed circuit swing pump", and regulates engine power according to demand. It offers 7 selectable power levels (4 digging and 3 lifting), including levelling mode for fine grading operations. PowerBoost is automatic in lifting mode and can be activated for 8 seconds in the other modes).

UNDERCARRIAGE

The CASE WX range features a new PowerShift transmission with a two gear range, and with "on the move" shifting. The maximum travel speed is increased up to 30 km/h, to reduce on road down time.

The typical CASE "Inching" associated with the "creeper" position allows safe and accurate movements, for loading on to a trailer.

Modular frame allows the assembly of all possible chassis configurations, according to customer requests.

The stabilisers and blade are fully independent, (front/rear and left/right), controlled by the dipper joystick and easily selectable by switches.

The large section stab pads are lockable to ensure the best dynamic stability to the machine in soft ground condition, keeping the articulation for hard surface applications.

The "City" stabilisers, with their numerous possible pad positions, are the most versatile solution, giving excellent stability and ability to work in confined areas, or alongside pavements.

Right hand side spacious tool box under the steps is standard.

Maximum travel speed (field range)	8 km/h
Maximum travel speed (road range)	20 or 30 km/h
Maximum drawbar pull (field range)	87 kNm

As on previous range the front axle lock is automatic.



CAB

The cab has been designed with the operator in mind:

- Spacious and ergonomic environment with tinted safety glass offering outstanding all-round visibility
- Modular total or partial opening windscreen with transparent rain shield
- Large roof window with sunshade
- Fully adjustable air suspension seat
- Steering column with continuously adjustable inclination
- Exceptionally quiet cab
- Easy to operate joystick controls and pedals

Large LCD display integrating the working mode information, auto diagnostic function and working status.

For operator convenience, all the major operating controls are located on the joysticks:

- Forward/reverse/neutral travel
- Attachment/Blade-Stabiliser selection
- Levelling mode
- PowerBoost
- Hydraulic options

NOISE LEVELS

LwA	103 dBA
LpA	76 dBA



ELECTRICAL CIRCUIT

Voltage	24 V
Batteries	2 x 12 V - 100 Ah
Alternator	70 A

Automatic isolator switch and 12 V power supply in cab as standard.



BRAKE SYSTEM

In order to keep the operator focussed on his own work, the travel brake is automatically activated when the pedal is released. The brakes are a multi-disc design for smooth operation.

TYRES

4 Wheels	18 - 19.5XF
8 Wheels with twinning rings	10.00 - 20

SWING

The swing function is operated by a hydraulic closed circuit coupled with a mechanical reducer integrating an automatic static brake. The hydro-static swing brake is adjustable with 3 settings.

Swing speed	9 rpm
Swing torque	36 kNm

CAPACITIES

Engine oil	16 l
Cooling circuit	26 l
Fuel tank	210 l
Hydraulic tank	110 l
Swing gear	5.5 l

UPPERSTRUCTURE

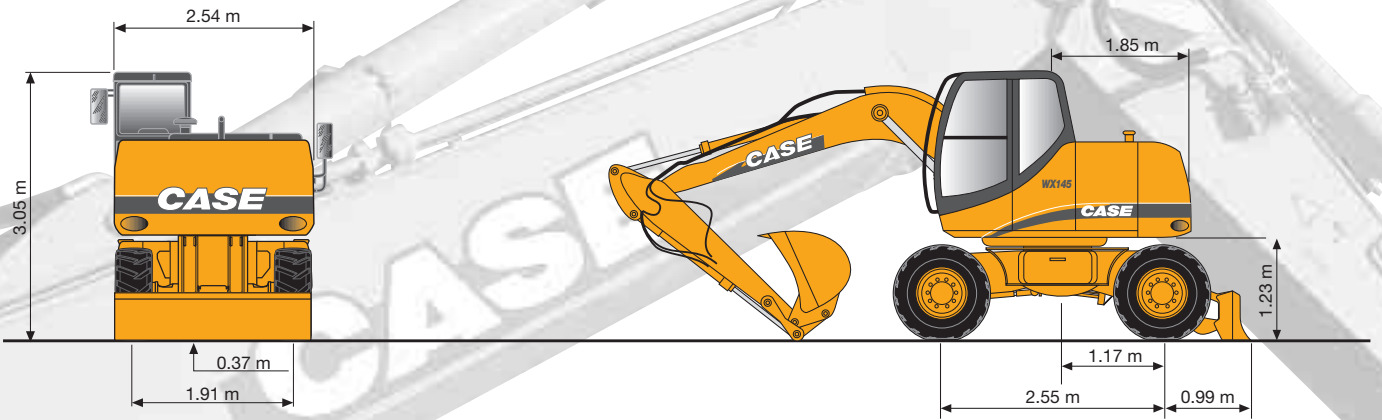
The new CASE WX offers as standard a compact upperstructure, integrating a transversal engine position. Even with a reduced tail radius, the service point accessibility is maintained and the catwalk remains the best access location for servicing.

Tail swing radius	1.85 m
--------------------------	--------

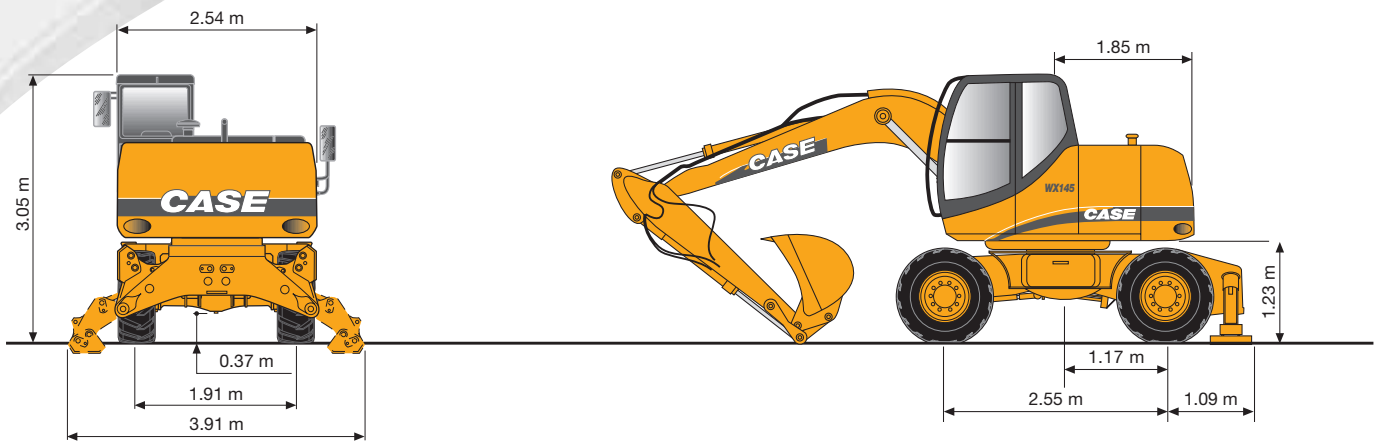


OVERALL DIMENSIONS

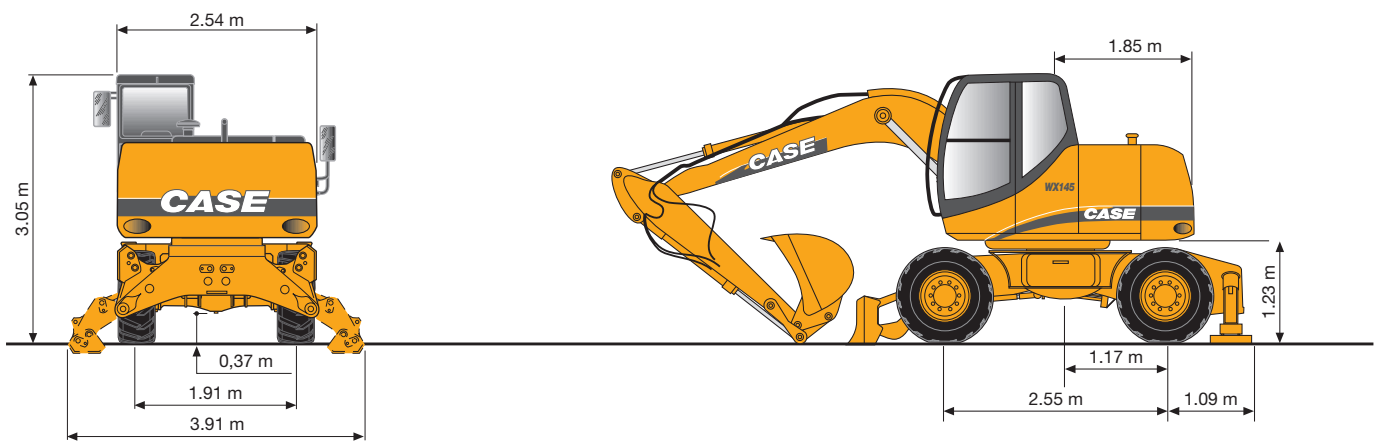
PL



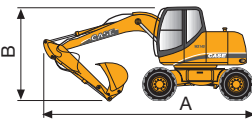
P2A






P2AL



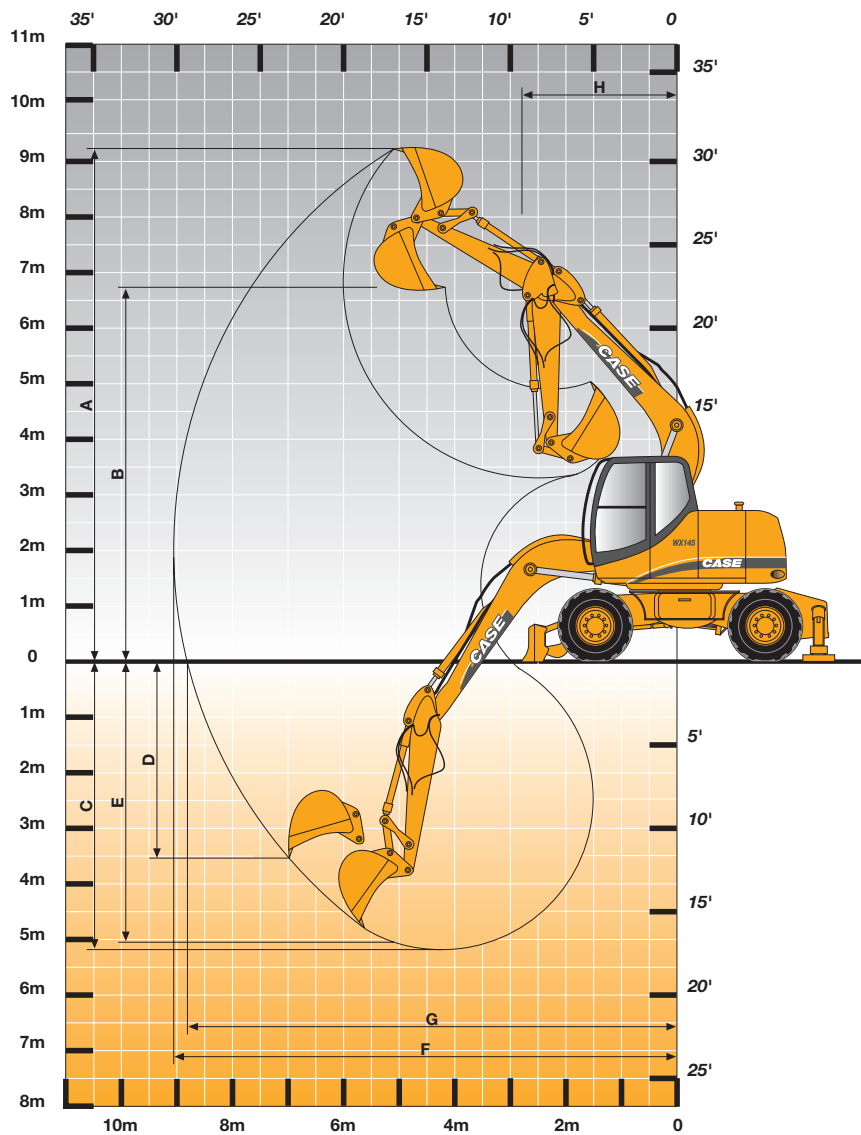
SHIPPING / DIMENSIONS / WEIGHT



	PL			P2A			P2AL			
	A mm	B mm	 kg	A mm	B mm	 kg	A mm	B mm	 kg	
MONO BOOM	Dipper 2.00 m	7672	2847	13 798	7672	2847	14 269	7672	2847	14 740
	Dipper 2.30 m	7706	2977	13 848	7706	2977	14 319	7706	2977	14 790
	Dipper 2.65 m	7678	3235	13 898	7678	3235	14 369	7678	3235	14 840
ARTICULATED BOOM	Dipper 2.00 m	7773	2842	14 295	7773	2842	14 766	7773	2842	15 237
	Dipper 2.30 m	7775	2828	14 345	7775	2828	14 816	7775	2828	15 287
	Dipper 2.65 m	7737	3034	14 395	7737	3034	14 866	7737	3034	15 337

Weights are indicated fitted with a 480 kg bucket





WORKING RANGE

		MONO BOOM 4.65 m			ARTICULATED BOOM 4.70 m		
		DIPPER			DIPPER		
		2.00	2.30	2.65	2.00	2.30	2.65
A Max. digging height	m	8.4	8.4	8.6	9.3	9.4	9.6
B Max. loading height	m	6.0	6.0	6.2	6.8	6.9	7.1
C Max. digging depth	m	4.8	5.1	5.5	4.8	5.1	5.4
D Max. vert. wall digging depth	m	3.6	3.5	3.9	3.7	4.0	4.3
E Max. depth of cut for 8° level bottom	m	4.6	4.9	5.2	4.7	5.0	5.3
F Max. digging reach	m	8.2	8.4	8.7	8.4	8.6	8.9
G Max. digging reach at ground level	m	8.0	8.2	8.5	8.1	8.4	8.7
H Min. front swing radius	m	3.0	3.0	3.0	2.6	2.5	2.6
Bucket breakout force (370 bar)	kNm	91.4	91.2	91.2	91.4	91.2	91.2
Stick crowd force (370 bar)	kNm	67.0	61.3	55.8	67.0	61.3	55.8

BUCKETS

General purpose

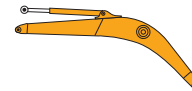
Capacity SAE	l	270	390	570	660	750	850	950
Width	mm	500	600	800	900	1000	1100	1200
Weight	kg	350	385	455	495	525	550	590

Heavy duty

Capacity SAE	l				660	750	850	950
Width	mm				900	1000	1100	1200
Weight	kg				555	590	625	665

LIFTING CAPACITY MONO BOOM

MONO BOOM: 4.65 m
BUCKET (CECE): 0.64 m³



Height	Reach										Max reach
	3.0 m		4.5 m		6.0 m		7.5 m		Front	360°	
	Front	360°	Front	360°	Front	360°	Front	360°			
9.0 m											
7.5 m											
6.0 m									1,4*	1,4*	5,7
4.5 m									1,4*	1,4*	6,6
3.0 m	8,4*	6,1	5,2*	3,2	4,1*	2,0			1,4*	1,4*	7,1
1.5 m	4,0*	4,0*	6,4*	2,9	4,6*	1,9			1,6*	1,4	7,2
0.0 m	5,6*	5,1	7,0*	2,7	4,7	1,8			2,0*	1,4	7,0
-1.5 m	8,9*	5,1	6,8*	2,7	4,6	1,7			2,8*	1,6	6,3
-3.0 m	8,3*	5,3	5,6*	2,8					4,5*	2,2	5,2
-4.5 m											

Height	Reach										Max reach
	3.0 m		4.5 m		6.0 m		7.5 m		Front	360°	
	Front	360°	Front	360°	Front	360°	Front	360°			
9.0 m											
7.5 m											
6.0 m											
4.5 m									1,2*	1,2*	6,0
3.0 m						2,7*	2,1		1,1*	1,1*	6,8
1.5 m	7,6*	6,3	4,9*	3,3	3,9*	2,0			1,2*	1,2*	7,3
0.0 m	5,8*	5,4	6,2*	2,9	4,5*	1,9			1,4*	1,3	7,4
-1.5 m	6,0*	5,1	6,9*	2,7	4,7	1,8			1,7*	1,3	7,1
-3.0 m	8,6*	5,1	6,9*	2,6	4,6	1,7			2,5*	1,5	6,5
-4.5 m	8,9*	5,2	5,9*	2,7					4,5*	2,0	5,4

Height	Reach										Max reach
	3.0 m		4.5 m		6.0 m		7.5 m		Front	360°	
	Front	360°	Front	360°	Front	360°	Front	360°			
9.0 m											
7.5 m											
6.0 m						1,5*	1,5*		0,9*	0,9*	6,4
4.5 m						2,5*	2,1		0,9*	0,9*	7,2
3.0 m	6,5*	6,5	4,5*	3,3	3,5*	2,0	1,3*	1,3*	0,9*	0,9*	7,6
1.5 m	7,5*	5,5	5,8*	3,0	4,3*	1,9	1,7*	1,2	1,1*	1,1*	7,7
0.0 m	6,1*	5,1	6,7*	2,7	4,7	1,7			1,3*	1,2	7,5
-1.5 m	7,9*	5,0	6,9*	2,6	4,6	1,7			1,8*	1,3	6,9
-3.0 m	9,5*	5,1	6,2*	2,6					3,2*	1,7	5,9
-4.5 m	6,1*	5,4							4,4*	3,3	4,0

Height	Reach										Max reach
	3.0 m		4.5 m		6.0 m		7.5 m		Front	360°	
	Front	360°	Front	360°	Front	360°	Front	360°			
9.0 m											
7.5 m											
6.0 m											
4.5 m									1,4*	1,4*	5,7
3.0 m			4,1*	4,1*	3,0*	3,0*			1,4*	1,4*	6,6
1.5 m	8,4*	8,4*	5,2*	5,2*	4,1*	3,5			1,4*	1,4*	7,1
0.0 m	4,0*	4,0*	6,4*	5,3	4,6*	3,3			1,6*	1,6*	7,2
-1.5 m	5,6*	5,6*	7,0*	5,0	4,9*	3,2			2,0*	2,0*	7,0
-3.0 m	8,9*	8,9*	6,8*	5,0	4,7*	3,2			2,8*	2,8*	6,3
-4.5 m	8,3*	8,3*	5,6*	5,1					4,5*	4,1	5,2

Height	Reach										Max reach
	3.0 m		4.5 m		6.0 m		7.5 m		Front	360°	
	Front	360°	Front	360°	Front	360°	Front	360°			
9.0 m											
7.5 m											
6.0 m									1,2*	1,2*	6,0
4.5 m						2,7*	2,7*		1,1*	1,1*	6,8
3.0 m	7,6*	7,6*	4,9*	4,9*	3,9*	3,5			1,2*	1,2*	7,3
1.5 m	5,8*	5,8*	6,2*	5,3	4,5*	3,3			1,4*	1,4*	7,4
0.0 m	6,0*	6,0*	6,9*	5,0	4,9*	3,2			1,7*	1,7*	7,1
-1.5 m	8,6*	8,6*	6,9*	4,9	4,8*	3,1			2,5*	2,5*	6,5
-3.0 m	8,9*	8,9*	5,9*	5,0					4,5*	3,7	5,4
-4.5 m											

Height	Reach										Max reach
	3.0 m		4.5 m		6.0 m		7.5 m		Front	360°	
	Front	360°	Front	360°	Front	360°	Front	360°			
9.0 m											
7.5 m											
6.0 m						1,5*	1,5*		0,9*	0,9*	6,4
4.5 m						2,5*	2,5*		0,9*	0,9*	7,2
3.0 m	6,5*	6,5*	4,5*	4,5*	3,5*	3,5	1,3*	1,3*	0,9*	0,9*	7,6
1.5 m	7,5*	7,5*	5,8*	5,3	4,3*	3,3	1,7*	1,7*	1,1*	1,1*	7,7
0.0 m	6,1*	6,1*	6,7*	5,0	4,7*	3,2			1,3*	1,3*	7,5
-1.5 m	7,9*	7,9*	6,9*	4,9	4,8*	3,1			1,8*	1,8*	6,9
-3.0 m	9,5*	9,5*	6,2*	4,9					3,2*	3,2	5,9
-4.5 m	6,1*	6,1*							4,4*	4,4*	4,0

Height	Reach										Max reach
	3.0 m		4.5 m		6.0 m		7.5 m		Front	360°	
	Front	360°	Front	360°	Front	360°	Front	360°			
9.0 m											
7.5 m											
6.0 m									1,4*	1,4*	5,7
4.5 m									1,4*	1,4*	6,6
3.0 m	8,4*	8,4*	5,2*	4,4	4,1*	2,7			1,4*	1,4*	7,1
1.5 m	4,0*	4,0*	6,4*	4,1	4,6	2,6			1,6*	1,6*	7,2
0.0 m	5,6*	5,6*	7,0*	3,9	4,5	2,5			2,0*	2,0	7,0
-1.5 m	8,9*	7,6	6,8*	3,8	4,4	2,5			2,8*	2,3	6,3
-3.0 m	8,3*	7,8	5,6*	3,9					4,5*	3,2	5,2
-4.5 m											

Height	Reach										Max reach
	3.0 m		4.5 m		6.0 m		7.5 m		Front	360°	
	Front	360°	Front	360°	Front	360°	Front	360°			
9.0 m											
7.5 m											
6.0 m											
4.5 m						2,7*	2,7*		1,2*	1,2*	6,0
3.0 m	7,6*	7,6*	4,9*	4,4	3,9*	2,7			1,1*	1,1*	6,8
1.5 m	5,8*	5,8*	6,2*	4,1	4,5*	2,6			1,2*	1,2*	7,3
0.0 m	6,0*	6,0*	6,9*	3,9	4,5	2,5			1,4*	1,4*	7,4
-1.5 m	6,0*	6,0*	6,9*	3,9	4,5	2,5			1,7*	1,7*	7,1
-3.0 m	8,6*	7,6	6,9*	3,8	4,4	2,4			2,5*	2,1	6,5
-4.5 m	8,9*	7,7	5,9*	3,8					4,5*	2,9	5,4

Height	Reach										Max reach
	3.0 m		4.5 m		6.0 m		7.5 m		Front	360°	
	Front	360°	Front	360°	Front	360°	Front	360°			
9.0 m											
7.5 m											
6.0 m						1,5*	1,5*		0,9*	0,9*	6,4
4.5 m						2,5*	2,5*		0,9*	0,9*	7,2
3.0 m	6,5*	6,5*	4,5*	4,5	3,5*	2,8	1,3*	1,3*	0,9*	0,9*	7,6
1.5 m	7,5*	7,5*	5,8*	4,1	4,3*	2,6	1,7*	1,7*	1,1*	1,1*	7,7
0.0 m	6,1*	6,1*	6,7*	3,9	4,5	2,5			1,3*	1,3*	7,5
-1.5 m	7,9*	7,5	6,9*	3,7	4,4	2,4			1,8*	1,8*	6,9
-3.0 m	9,5*	7,6	6,2*	3,8					3,2*	2,5	5,9
-4.5 m	6,1*	6,1*							4,4*	4,4*	4,0

- Lift capacities are taken in accordance with SAE J 1097/ISO 10567/ DIN 15019-2.

- Lift capacities shown in kg do not exceed 75% of the tipping load or 87% of the hydraulic lift capacity.

- Capacities that are marked with an asterisk are hydraulic limited.

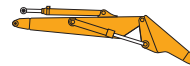
- Reach is computed using the horizontal distance from the swing centreline of the machine to the load hitching point. If the load is hitched at the tip of the dipperstick. The load raised must be increased by 550 kg after removing the bucket, bucket cylinder, yoke and connecting rod.

- If the machine is equipped with a quick coupler, subtract the weight of the quick coupler from the load shown in the tables to calculate the real lifting capacity.

- The machine must be parked on firm, level ground, with stabilisers and/or blade on the ground.

LIFTING CAPACITY

ARTICULATED BOOM



BASE BOOM: 2.01 m
TOP BOOM: 3.00 m
BUCKET (CECE): 0.64 m³

Height	Reach										Max reach	
	3.0 m		4.5 m		6.0 m		7.5 m					
	Front	360°	Front	360°	Front	360°	Front	360°	Front	360°		
9.0 m												
7.5 m			3,3*	3,3*					2,0*	2,0*	4,3	
6.0 m			4,1*	3,6	3,2*	2,2			1,6*	1,6*	5,9	
4.5 m	9,6*	6,7	5,9*	3,6	4,2*	2,2			1,6*	1,4	7,3	
3.0 m	11,3*	6,5	7,5*	3,5	5,0	2,1			1,7*	1,3	7,4	
1.5 m	13,1*	6,2	8,2	3,3	4,9	1,9			2,0*	1,3	7,1	
0.0 m	14,9*	5,9	8,3	3,0	4,7	1,8			2,7*	1,5	6,5	
-1.5 m	14,6*	5,7	8,0*	2,9					4,5*	2,1	5,4	
-3.0 m												
-4.5 m												

Height	Reach										Max reach	
	3.0 m		4.5 m		6.0 m		7.5 m					
	Front	360°	Front	360°	Front	360°	Front	360°	Front	360°		
9.0 m												
7.5 m			1,9*	1,9*					1,6*	1,6*	4,7	
6.0 m			2,9*	2,9*	1,8*	1,8*			1,3*	1,3*	6,2	
4.5 m			3,5*	3,5*	3,0*	2,2			1,3*	1,3*	7,0	
3.0 m	8,6*	6,7	5,7*	3,5	3,9*	2,2			1,3*	1,3	7,5	
1.5 m	11,3*	6,5	7,1*	3,5	5,0	2,1	1,7*	1,2	1,5*	1,2	7,6	
0.0 m	12,8*	6,3	8,1	3,3	4,8	1,9			1,7*	1,2	7,3	
-1.5 m	14,7*	5,9	8,3	3,0	4,7	1,8			2,3*	1,4	6,8	
-3.0 m	15,0*	5,6	8,0	2,8					3,9*	1,9	5,7	
-4.5 m												

Height	Reach										Max reach	
	3.0 m		4.5 m		6.0 m		7.5 m					
	Front	360°	Front	360°	Front	360°	Front	360°	Front	360°		
9.0 m												
7.5 m			2,1*	2,1*					1,3*	1,3*	5,2	
6.0 m			4,1*	4,1*	2,0*	2,0*			1,1*	1,1*	6,6	
4.5 m			2,8*	2,8*	2,6*	2,2			1,0*	1,0*	7,4	
3.0 m	7,7*	6,7	4,8*	3,5	3,5*	2,2	1,8*	1,3	1,0*	1,0*	7,8	
1.5 m	11,2*	6,5	6,7*	3,4	4,7*	2,1	2,3*	1,3	1,2*	1,1	7,9	
0.0 m	12,3*	6,4	8,1	3,3	4,9	2,0	2,1*	1,2	1,4*	1,1	7,7	
-1.5 m	14,3*	5,9	8,2	3,1	4,7	1,8			1,8*	1,3	7,1	
-3.0 m	15,1*	5,7	8,0	2,8	4,1*	1,7			2,8*	1,6	6,2	
-4.5 m									11,4*	6,4	2,8	

Height	Reach										Max reach	
	3.0 m		4.5 m		6.0 m		7.5 m					
	Front	360°	Front	360°	Front	360°	Front	360°	Front	360°		
9.0 m												
7.5 m									2,0*	2,0*	4,3	
6.0 m			3,3*	3,3*					1,6*	1,6*	5,9	
4.5 m			4,1*	4,1*	3,2*	3,2*			1,5*	1,5*	6,8	
3.0 m	9,6*	9,6*	5,9*	5,8	4,2*	3,6			1,6*	1,6*	7,3	
1.5 m	11,3*	11,3*	7,5*	5,7	5,3*	3,5			1,7*	1,7*	7,4	
0.0 m	13,1*	11,6	8,8*	5,7	6,0*	3,4			2,0*	2,0*	7,1	
-1.5 m	14,9*	11,6	9,0*	5,4	5,8*	3,3			2,7*	2,7*	6,5	
-3.0 m	14,6*	11,3	8,0*	5,2					4,5*	3,8	5,4	
-4.5 m												

Height	Reach										Max reach	
	3.0 m		4.5 m		6.0 m		7.5 m					
	Front	360°	Front	360°	Front	360°	Front	360°	Front	360°		
9.0 m												
7.5 m			1,9*	1,9*					1,6*	1,6*	4,7	
6.0 m			2,9*	2,9*	1,8*	1,8*			1,3*	1,3*	6,2	
4.5 m			3,5*	3,5*	3,0*	3,0*			1,3*	1,3*	7,0	
3.0 m	8,6*	8,6*	5,7*	5,7*	3,9*	3,6			1,3*	1,3*	7,5	
1.5 m	11,3*	11,3*	7,1*	5,7	5,1*	3,5	1,7*	1,7*	1,5*	1,5*	7,6	
0.0 m	12,8*	11,5	8,6*	5,8	5,9*	3,4			1,7*	1,7*	7,3	
-1.5 m	14,7*	11,6	8,9*	5,4	6,0*	3,3			2,3*	2,3*	6,8	
-3.0 m	15,0*	11,2	8,5*	5,2					3,9*	3,5	5,7	
-4.5 m												

Height	Reach										Max reach	
	3.0 m		4.5 m		6.0 m		7.5 m					
	Front	360°	Front	360°	Front	360°	Front	360°	Front	360°		
9.0 m												
7.5 m			2,1*	2,1*					1,3*	1,3*	5,2	
6.0 m			4,1*	4,1*	2,0*	2,0*			1,1*	1,1*	6,6	
4.5 m			2,8*	2,8*	2,6*	2,6*			1,0*	1,0*	7,4	
3.0 m	7,7*	7,7*	4,8*	4,8*	3,5*	3,5	1,8*	1,8*	1,0*	1,0*	7,8	
1.5 m	11,2*	11,2*	6,7*	5,6	4,7*	3,5	2,3*	2,3	1,2*	1,2*	7,9	
0.0 m	12,3*	11,4	8,3*	5,7	5,6*	3,4	2,1*	2,1*	1,4*	1,4*	7,7	
-1.5 m	14,3*	11,6	8,8*	5,5	6,1*	3,3			1,8*	1,8*	7,1	
-3.0 m	15,1*	11,3	8,9*	5,2	4,1*	3,2			2,8*	2,8*	6,2	
-4.5 m									11,4*	11,4*	2,8	

Height	Reach										Max reach		
	3.0 m		4.5 m		6.0 m		7.5 m						
	Front	360°	Front	360°	Front	360°	Front	360°	Front	360°			
9.0 m													
7.5 m											2,0*	2,0*	4,3
6.0 m			3,3*	3,3*							1,6*	1,6*	5,9
4.5 m			4,1*	4,1*	3,2*	2,9			1,5*	1,5*	6,8		
3.0 m	9,6*	9,0	5,9*	4,7	4,2*	2,9			1,6*	1,6*	7,3		
1.5 m	11,3*	8,9	7,5*	4,6	4,8	2,8			1,7*	1,7*	7,4		
0.0 m	13,1*	8,9	7,9	4,5	4,7	2,7			2,0*	1,9	7,1		
-1.5 m	14,9*	8,6	7,9	4,2	4,5	2,5			2,7*	2,2	6,5		
-3.0 m	14,6*	8,3	7,7	4,0					4,5*	3,0	5,4		
-4.5 m													

Height	Reach										Max reach	
	3.0 m		4.5 m		6.0 m		7.5 m					
	Front	360°	Front	360°	Front	360°	Front	360°	Front	360°		
9.0 m												
7.5 m			1,9*	1,9*					1,6*	1,6*	4,7	
6.0 m			2,9*	2,9*	1,8*	1,8*			1,3*	1,3*	6,2	
4.5 m			3,5*	3,5*	3,0*	2,9			1,3*	1,3*	7,0	
3.0 m	8,6*	8,6*	5,7*	4,7	3,9*	2,9			1,3*	1,3*	7,5	
1.5 m	11,3*	8,9	7,1*	4,6	4,8	2,8	1,7*	1,7*	1,5*	1,5*	7,6	
0.0 m	12,8*	8,9	7,8	4,5	4,7	2,7			1,7*	1,7*	7,3	
-1.5 m	14,7*	8,6	7,9	4,2	4,5	2,5			2,3*	2,0	6,8	
-3.0 m	15,0*	8,2	7,6	4,0					3,9*	2,7	5,7	
-4.5 m												

Height	Reach										Max reach	
	3.0 m		4.5 m		6.0 m		7.5 m					
	Front	360°	Front	360°	Front	360°	Front	360°	Front	360°		
9.0 m												
7.5 m			2,1*	2,1*					1,3*	1,3*	5,2	
6.0 m			4,1*	4,1*	2,0*	2,0*			1,1*	1,1*	6,6	
4.5 m			2,8*	2,8*	2,6*	2,6*			1,0*	1,0*	7,4	
3.0 m	7,7*	7,7*	4,8*	4,6	3,5*	2,9	1,8*	1,8	1,0*	1,0*	7,8	
1.5 m	11,2*	8,9	6,7*	4,6	4,7	2,8	2,3*	1,8	1,2*	1,2*	7,9	
0.0 m	12,3*	8,8	7,7	4,6	4,7	2,7	2,1*	1,7	1,4*	1,4*	7,7	
-1.5 m	14,3*	8,6	7,9	4,3	4,5	2,5			1,8*	1,8*	7,1	
-3.0 m	15,1*	8,3	7,6	4,0	4,1*	2,4			2,8*	2,4	6,2	
-4.5 m									11,4*	9,6	2,8	

- Lift capacities are taken in accordance with SAE J 1097/ISO 10567/ DIN 15019-2.

- Lift capacities shown in kg do not exceed 75% of the tipping load or 87% of the hydraulic lift capacity.

- Capacities that are marked with an asterisk are hydraulic limited.

- Reach is computed using the horizontal distance from the swing centreline of the machine to the load hitching point. If the load is hitched at the tip of the dipperstick. The load raised must be increased by 550 kg after removing the bucket, bucket cylinder, yoke and connecting rod.

- If the machine is equipped with a quick coupler, subtract the weight of the quick coupler from the load shown in the tables to calculate the real lifting capacity.

- The machine must be parked on firm, level ground, with stabilisers and/or blade on the ground.

WX145

BASIC EQUIPMENT

- Robust, shielded arc-welded, modular chassis in box section design
- Patented disc brakes for jolt-free work
- PowerShift gear box
- Large toolbox under the step
- Latest generation CASE Family III Tier II diesel engines, compliant with European emissions standards
- Direct injection with turbo charger and charge air cooling
- Water-cooled, low-consumption and low-exhaust compliant to EU directive
- Automatic battery main switch (coupled to ignition key)
- Electronic immobiliser
- Pump Management System
- Electrohydraulic servo control
- Triple-pump-hydraulic system with two service pumps and separate swing pump
- Engine and pump monitoring by power limit control
- 8 selectable power stages
- Automatic power increase in DRIVE stage
- Comfortable Inching control
- Encased ball bearing slew ring with long-life lubrication
- Swing drive with low-wearing disc brake
- Noise-insulated and flexibly mounted cabin in soft design
- Tinted safety glazing all around, full up and over windscreen
- Sun blinds, large roof window, transparent rain protection
- LCD with integrated error diagnosis function
- Steering column incline infinitely variable
- Ergonomic design of arm rests and foot pedals
- Driver air suspension seat individually adjustable for height and incline
- Consoles adjustable for height and length
- 12 V electrical auxiliary supply in cab
- Forward/Reverse shifting on joystick
- Independent control of blade and each stabiliser
- Automatic axle locking system
- Automatic working brake
- Travel and swing hydrostatic braking
- Cab headlights
- Air conditioning
- Electric diesel filling system
- PowerBoost system
- Centralised control of blade and stabilisers on left joystick

POSSIBLE ADDITIONAL OPTIONS

- 30 km/h forward speed
- Single or twin tyres
- Dozer blade with hydraulic parallel guidance
- Stabilisers with large, lockable pads for secure grip on uneven ground
- City stabilisers
- Transport holder for clamshell grab
- Intermediate bearing for prop shaft
- Central lubrication
- Cooling box
- Radio
- Additional working lights
- Auxiliary heating
- Front and roof guards
- FOPS protection for cab
- Armoured glass for front window
- Safety load hook on coupler
- Safety valves for hoist mode
- Hydraulic system for hammer, grab, shears



SERVICE & SUPPORT THE CASE DEALER YOUR PROFESSIONAL PARTNER

World-class construction equipment is just the start with Case. Your local Case dealer is a total solutions provider. Look to Case dealers to help find the right size machine, attachments and options to meet the demands of your job.

Case dealers help you maximise machine uptime and profitability. That means you can focus on the job, knowing your Case dealer is never far away.

Case dealers stand behind the equipment they sell, with skilled service technicians fully equipped to resolve your maintenance and repair issues and, the support of a global parts network, recognised as second to none in the industry. But it doesn't stop there. Through CNH Capital, your local Case dealer offers flexible financing options, leasing packages and insurance services to protect your investment.

When you need more than just equipment, Case dealers deliver. More.



WORLDWIDE CASE CONSTRUCTION EQUIPMENT CONTACT INFORMATION

EUROPE/AFRICA/MIDDLE EAST:
CENTRE D'AFFAIRES EGB
5, AVENUE GEORGES BATAILLE - BP 40401
60671 PLESSIS BELLEVILLE - FRANCE

NORTH AMERICA/MEXICO:
700 STATE STREET
RACINE, WI 53404 U.S.A.

LATIN AMERICA:
AV. GENERAL DAVID SARNOFF 2237
32210 - 900 CONTAGEM - MG
BELO HORIZONTE BRAZIL

ASIA PACIFIC:
31 - 67 KURRAJONG AVENUE ST. MARY'S
NEW SOUTH WALES 2760 AUSTRALIA

CHINA:
No. 29, INDUSTRIAL PREMISES, No. 376,
DE BAO ROAD, WAIGAOQIAO FTZ, PUDONG,
SHANGHAI, 200131, P.R.C.

NOTE: Standard and optional fittings can vary according to the demands and specific regulations of each country. The illustrations may include optional rather than standard fittings - consult your Case dealer. Furthermore, CNH reserves the right to modify machine specifications without incurring any obligation relating to such changes.

CASE CONSTRUCTION EQUIPMENT
CNH France, S.A.
Centre d'Affaires EGB
5, avenue Georges Bataille
BP 40401
60671 Plessis Belleville Cedex - FRANCE
Tel. 33 (0)3 44742100
Fax 33 (0)3 44742335

Conforms to directive 98/37/CE 

www.casece.com

CASE
PROFESSIONAL PARTNER



CASE IS A BRAND OF CNH.
CNH: THE TOTAL SOLUTIONS CHOICE FOR YOUR SPECIFIC BUSINESS NEEDS.