

CASE

Wheeled Excavator

Case Tier 2 engine: 117 hp - 87 kW
Operating weight 13.6 to 16.5 t (Maxi 17.75 t)
Backhoe buckets 370 to 820 L

WX150



C O M M I T T E D T O Y O U R N E E D S

ENGINE

CASE 439TA/M2 engine 4 cylinders, Turbo water-cooled, displacement 3920 cm³
Bore x stroke 102 x 120 mm
Engine speed 2000 rpm
Net EEC 80/1269 power output 117 hp (87 kW)
Automatic computer controlled preheating system
On board system that does not allow the machine to be operated if the engine temperature is too low.
Manual or automatic engine idle after 5 seconds of non-use of hydraulic functions
Performance maintained up to 3000 m altitude and a temperature of 25°C.
Heavy-duty dust filtration
Tier 2 low emission engine conforming to current European norms.
Electric diesel-oil filling pump*
Fuel tank capacity: 249 l.

HYDRAULIC SYSTEM

Load sensing hydraulic system enabling independent and simultaneous movements.
Electronic hydraulic power regulation by the “**ECOPOWER**” system enabling optimal use of engine power.

3 regulation modes:

MAX mode for full use of installed power.

ECO mode for normal working operations (reduction in noise, fuel economy).

LIFT mode for precision and load handling work.

LOW position enabling a return to idle before shutting down the machine.

1 double-body variable displacement pump for supplying travel motors and attachments, flow 210 l/min.

1 fixed displacement pump for supplying the upperstructure swing, flow 44 l/min.

Working pressure 350/380 bar.

Automatic powerboost for 8 seconds, pressure 380 bar.

Parallel, closed centre type attachment control valve system; flows adapted to each function whatever the pressure level.

Cooling system fan is independent of the engine, driven by an hydraulic motor, controlled by

“**ECOPOWER**” electronics (speed depending on the temperature of the engine and hydraulic system).

ELECTRICAL CIRCUIT

Power circuit 24 V

Maintenance-free batteries 2 x 12 V – 100 A/h

Voltage converter 12 V 10 A/h DC (cab electrical power point).

Watertight cabinet integrated into the cab containing the machine’s electrical safety systems (fuses, relays), linked by “**CAN-BUS**” with all pressure, temperature and speed sensors of the control console, and the “**ECOPOWER**” electronic circuit.

UPPERSTRUCTURE

Fabricated modular structure.

Transverse walkway over the entire width of the machine providing easy access to all components (engine, filters, hydraulic components).

Soundproofed lockable cowlings.

Toolbox lockable from the front RH side.

Anti-overflow diesel tank filling plug.

SWING

Hydraulic motor with reduction gear and automatic static brake controlled by “**ECOPOWER**”.

Upperstructure swing speed 7.7 rpm.

Turntable bearing with alternate rollers and inner ring gear teeth, centralised lubrication.

CAB

Removable, on 4 flexible mounting blocks (insulating vibrations).

Up and over adjustable windshield (with assistance) (cab roof) lockable in the raised and lowered positions.

Cab covered with wide glass panes fitted with a transparent roof with sun-shield.

Transparent shatterproof cab visor (polycarbonate) with integrated working lights.

Tinted windshield, safety glass, cab door sliding window.

OPERATION

Super comfort seat, adjustable in several positions.

Pneumatic suspension seat.

Adjustable steering wheel.

Servo-assisted controls using manipulators fitted with several electrical sensors (optional controls).

Timed windshield wiper, windshield washer 2-speed heating, defrosting and ventilation air conditioning*, fire extinguisher, roof light, cab light, cigar lighter and sun shield.

Hydraulic safety on LH manipulator bracket (cancellation of hydraulic function controls).

Mechanical locking of the upperstructure in the transport position.

Locking of the hydraulic function controls (attachment/ swing) during travel (safety)

Overload indicator.

Quick coupler unlocking control with buzzer.

Attachment lowering control when the engine is shut down.

LCD instrument panel (multi-language) and indicators enabling continuous control of the machine functions and providing an on-line diagnostic in case of a defect.

Checking the engine temperature, hydraulic oil temperature, fuel level, Alarm indicator with buzzer, for battery charging, engine oil pressure, hydraulic pilot pressure, steering system, brake circuit. Front axle locking position indicator, direction of travel indicator, parking brake.

Password protected anti-theft device (instrument panel buttons) neutralising the hydraulic functions of the machine (swing, travel).

UNDERCARRIAGE

Modular design enabling the assembly of blade or stabilisers in front as well as behind.

Choice of 2 types of stabilisers “**BUTTERFLY**” or “**CITY**”.

Front axle swivel by + or – 7°, lockable, automatically or manually depending on the operation of the machine.

Dozer blade, used in filling or stability mode.

Automatically lockable blade and stabilisers (non-return check valves).

Independent dozer blade control from the cab

Toolboxes “steps” with locks.

TYRES

4-wheel version 18-19.5 XF

8-wheel version 10.00 x 20 (with coupling rings)

Multiple disc oil bath brakes, dual circuit service brake FWD – REV, controlled by foot (pedal), “automatic or manual” parking and work brake controlled by the switch on the console acting on the 4 wheels.

Hydro-mechanical transmission with variable displacement hydraulic motor and range selector, enabling continuous variation of the speed:

0 to 7.5 km/h in work site range,

0 to 25 km/h in road range.

Changing the range on the instrument panel and by operating the brake pedal

Speed and travel direction control by the “Inching” reverser (travel speed independent of the engine rpm and the ascent, descent, flat terrain configuration).

Option of reversing the direction of travel using the RH control lever.

Gradeability - continuous 40 %

Outer turning radius 6.50 m

ATTACHMENTS

Choice of 4 types of booms, 3 types of dippers and several tools (buckets, clamshells, grapples, quick couplers etc...).

Working light on boom.

Greasing of all linkages from the ground, watertight linkages, double action cylinders with end of stroke retarders and shock absorbers, bucket linkage with side play take-up system.

Safety valve with a valve for locking the boom function during travel.

Auxiliary “breaker” system*.

Auxiliary “clamshell swing” system*.

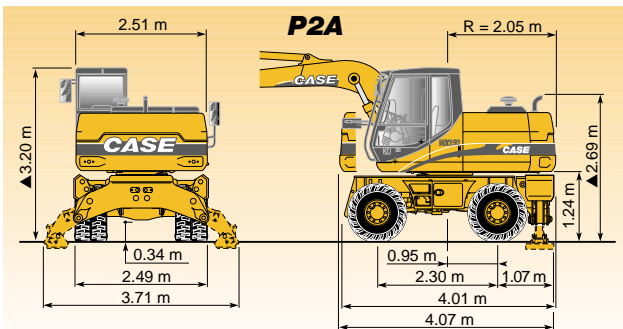
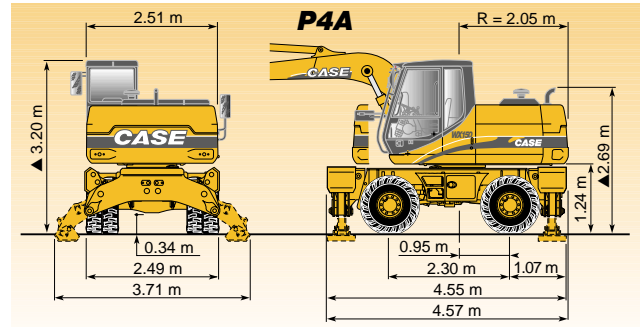
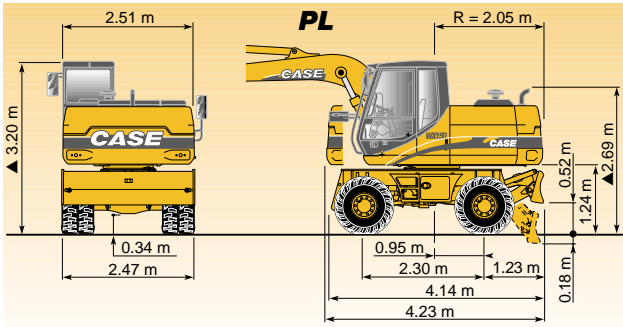
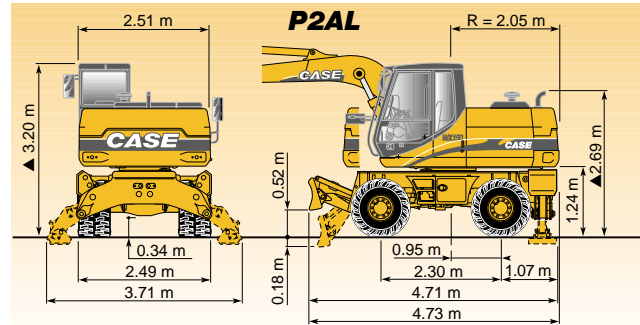
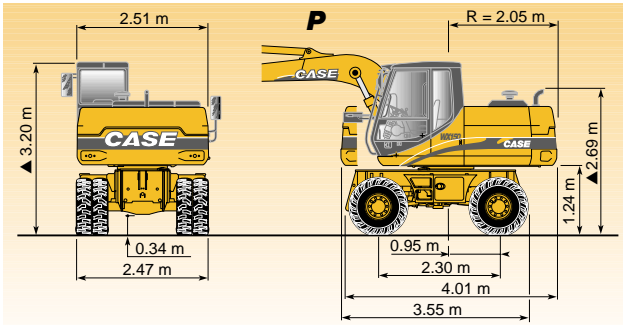
Auxiliary “backhoe clamshell” system*.

Mechanical or hydraulic quick coupler*.

** Standard and optional equipment can vary from country to country*

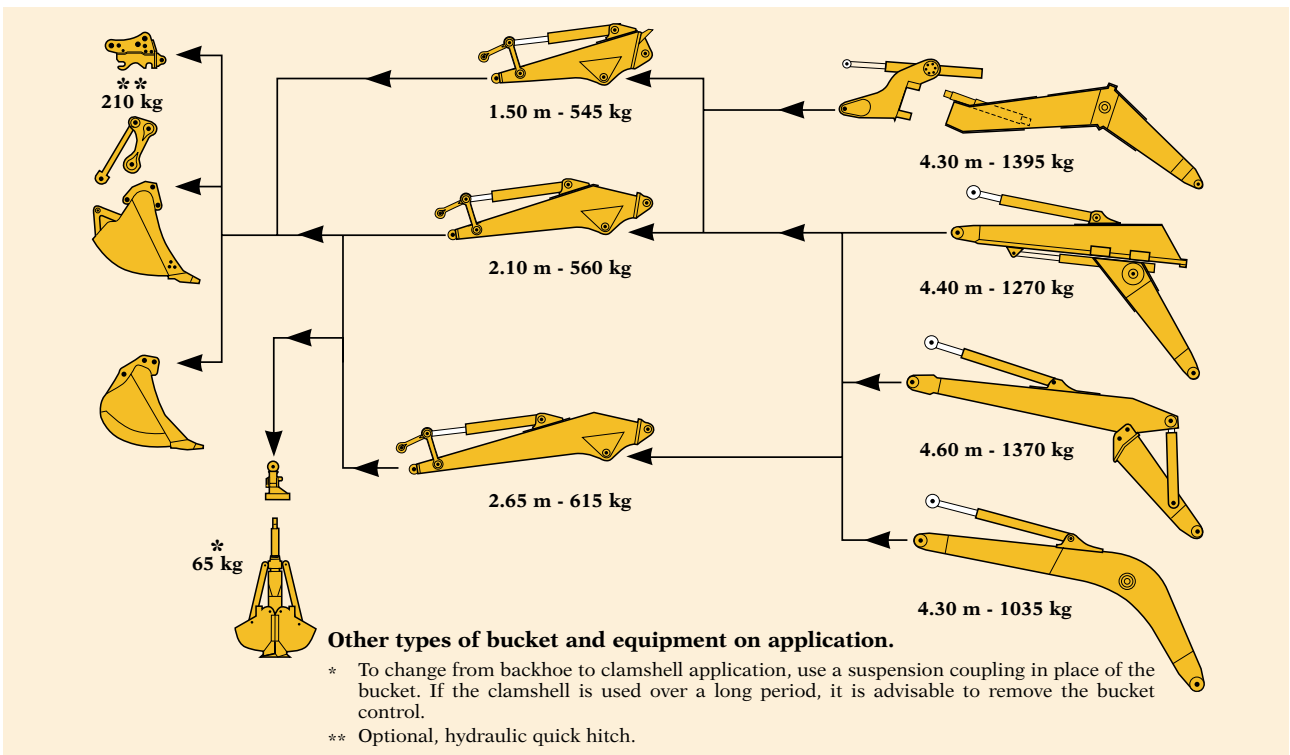


OVERALL DIMENSIONS

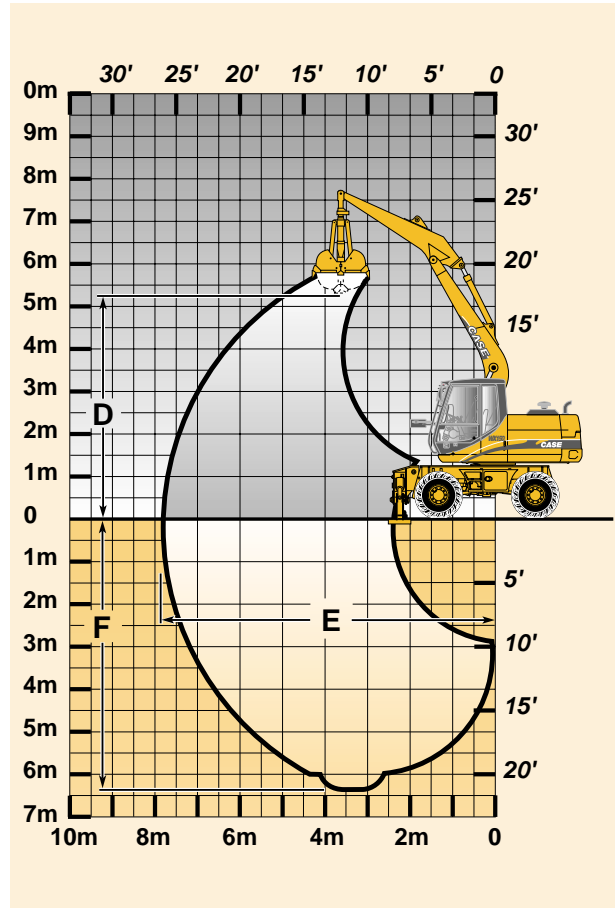
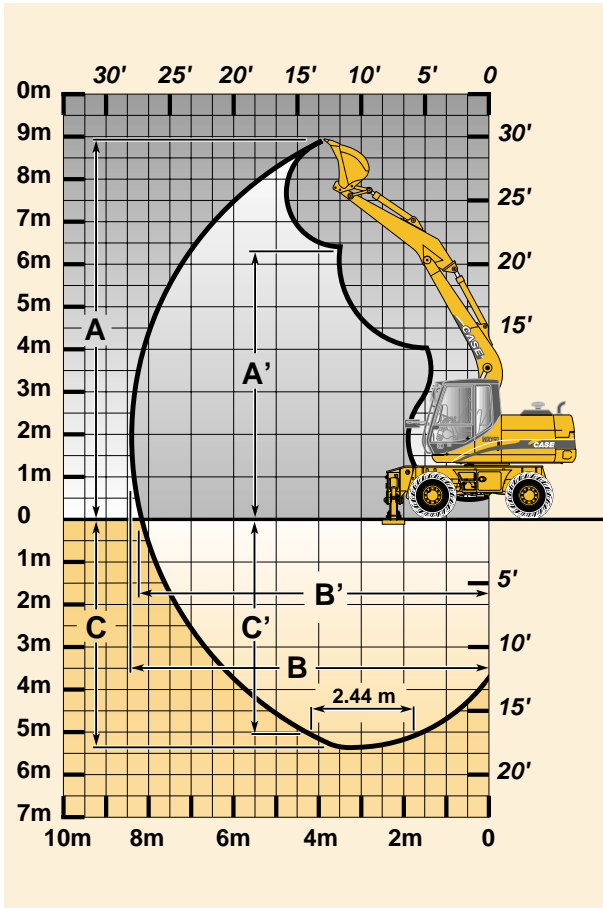


▲ wheels 18 x 19.5 + 2 cm

MOUNTING AND WEIGHT OF ATTACHMENTS



BACKHOE EQUIPMENT - CLAMSHELL ATTACHMENT

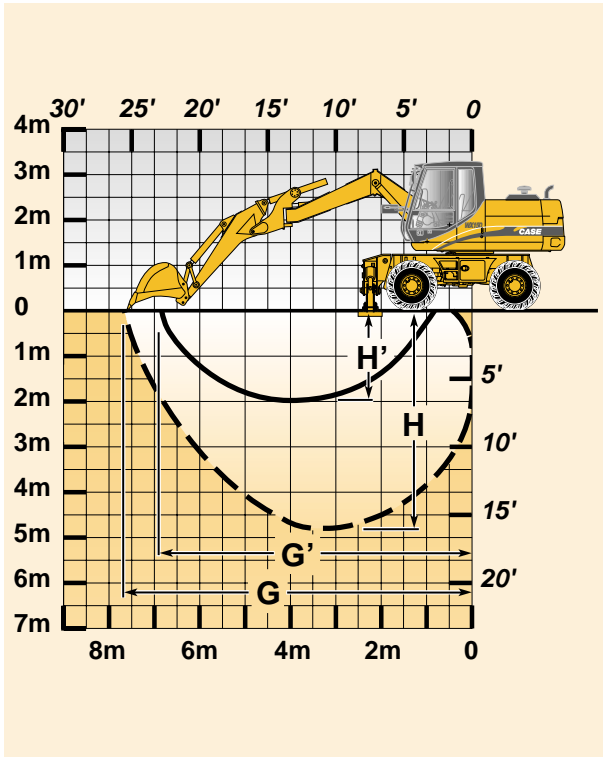


	4.30 m								
	1.50 m	2.10 m	2.65 m	1.50 m	2.10 m	2.65 m	1.50 m	2.10 m	2.65 m
A m	8.20	8.60	8.90	8.05	8.35	8.65	8.70	9.10	9.45
A' m	5.60	6.00	6.30	5.60	5.85	6.10	6.05	6.45	6.80
B m	7.40	7.95	8.45	7.40	7.90	8.35	7.70	8.20	8.70
B' m	7.15	7.70	8.25	7.15	7.65	8.15	7.50	8.05	8.55
C m	4.15	4.75	5.30	4.20	4.80	5.35	4.40	5.00	5.50
C' m	3.80	4.45	5.05	3.80	4.45	5.00	4.30	4.90	5.40
daN *	7 300	5 800	4 900	7 300	5 800	4 900	7 300	5 800	4 900
**	8 000	6300	5 300	8000	6 300	5 300	8 000	6 300	5 300
daN *	9 700	9 700	9 700	9 700	9 700	9 700	9 700	9 700	9 700
**	10 600	10 600	10 600	10 600	10 600	10 600	10 600	10 600	10 600
D m	-	4.85	5.20	-	4.70	5.00	-	4.35	5.70
E m	-	7.25	7.80	-	7.20	7.70	-	7.60	8.10
F m	-	5.85	6.40	-	5.90	6.45	-	6.15	6.65

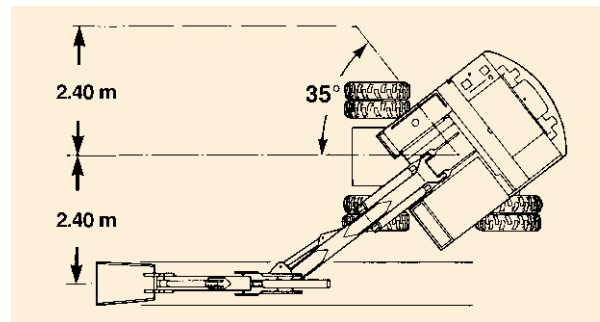
* 350 bar

** 380 bar (Mode LIFT)

OFFSET BACKHOE EQUIPMENT



		1.50 m	2.10 m
G	m	7.25	7.80
G'	m	6.40	6.90
H	m	4.15	4.75
H'	m	1.35	1.95



- Trench with vertical walls (maximum offset)
- - - Maximum working range (zero offset)

SHIPPING - DIMENSIONS - WEIGHT

 A B	* 560 L		● kg		● kg		● kg	
	A	B	WX150 P	WX150 PL	WX150 P2A	WX150 P2AL	WX150 P4A	
 4.30 m	1.50 m	2.75	7.70	13575	14240	14830	15490	16080
	2.10 m	3.05	7.55	13590	14250	14840	15505	16090
	2.65 m	3.40	7.55	13645	14305	14895	15560	16145
 Adjustable	1.50 m	3.00	7.80	13810	14470	15060	15725	16310
	2.10 m	3.30	7.65	13825	14485	15075	15735	16325
	2.65 m	3.60	7.65	13880	14540	15130	15790	16380
 Articulated	1.50 m	2.95	7.90	13910	14570	15160	15825	16410
	2.10 m	3.10	7.85	13925	14585	15175	15835	16425
	2.65 m	3.35	7.85	13980	14640	15230	15890	16480
 Offset backhoe	1.50 m	2.80	7.70	13940	14600	15190	15850	16440
	2.10 m	3.00	7.55	13950	14615	15200	15865	16455
	2.65 m	3.45	7.55	14005	14670	15255	15920	16510

● Wheels 10.00 - 20 + 355 kg

■ Attention : Height ground/cab 3.25 m



LIFTING CAPACITY

WX150 P - 4.30 m BOOM

1.50 m dipperstick and 560 l GP bucket

Reach Height	3 m		4.50 m		6 m	
	Front	360°	Front	360°	Front	360°
6.0 m						
4.5 m	5050*		3250			
3.0 m			3050		1900	
1.5 m			2850		1850	
0	5050		2750			
-1.5 m	5150		2800	2750		
-3.0 m	4150*					
-4.5 m						
Max. reach	6.15 m		(Font) 1800		(360°) 1750	

WX150 P - ADJUSTABLE BOOM

1.50 m dipperstick and 560 l GP bucket

Reach Height	3 m		4.50 m		6 m	
	Front	360°	Front	360°	Front	360°
6.0 m						
4.5 m	5000*		3250			
3.0 m			3000			
1.5 m			2750		1800	
0	4800		2650			
-1.5 m	4900		2650			
-3.0 m	4350*					
-4.5 m						
Max. reach	6.10 m		(Font) 1750		(360°) 1750	

WX150 P - ARTICULATED BOOM

1.50 m dipperstick and 560 l GP bucket

Reach Height	3 m		4.50 m		6 m	
	Front	360°	Front	360°	Front	360°
6.0 m						
4.5 m	4450*		3350			
3.0 m	6050*		3250		1900	
1.5 m			2750		1800	
0			2650		1750	
-1.5 m	5000		2700	2650		
-3.0 m						
-4.5 m						
Max. reach	6.45 m		(Font) 1650		(360°) 1600	

2.10 m dipperstick and 560 l GP bucket

Reach Height	3 m		4.50 m		6 m	
	Front	360°	Front	360°	Front	360°
6.0 m			2900*			
4.5 m			3350		2000	
3.0 m	5900		3150		1950	
1.5 m			2900		1900	1850
0	5050		2800	2750	1800	
-1.5 m	5100		2750			
-3.0 m	5250					
-4.5 m						
Max. reach	6.70 m		(360°) 1550			

2.10 m dipperstick and 560 l GP bucket

Reach Height	3 m		4.50 m		6 m	
	Front	360°	Front	360°	Front	360°
6.0 m			2850*			
4.5 m			3350*		2000	
3.0 m	5850		3100		1950	1900
1.5 m	4450*		2850		1800	
0	4850		2650		1750	1700
-1.5 m	4850		2600			
-3.0 m	5000					
-4.5 m						
Max. reach	6.65 m		(360°) 1550			

2.10 m dipperstick and 560 l GP bucket

Reach Height	3 m		4.50 m		6 m	
	Front	360°	Front	360°	Front	360°
6.0 m			3100*			
4.5 m	3700*		3350		2050	2000
3.0 m			3100		1950	
1.5 m			2850	2850	1850	
0	4150*		2700		1750	
-1.5 m	4950		2650		1750	1700
-3.0 m	4750*		2750	2700		
-4.5 m						
Max. reach	6.95 m		(Font) 1450		(360°) 1400	

2.65 m dipperstick and 560 l GP bucket

Reach Height	3 m		4.50 m		6 m	
	Axe	360°	Axe	360°	Axe	360°
6.0 m			2350*			
4.5 m			2600*		2050	
3.0 m	5350*		3200		2000	1950
1.5 m	5400		2950		1900	1850
0	5050		2750		1800	1750
-1.5 m	5050		2700		1750	
-3.0 m	5150		2750			
-4.5 m						
Max. reach	7.25 m		(360°) 1350			

2.65 m dipperstick and 560 l GP bucket

Reach Height	3 m		4.50 m		6 m	
	Front	360°	Front	360°	Front	360°
6.0 m			2350*			
4.5 m			2750*		2050	
3.0 m	5350*		3200		1950	
1.5 m	5250		2900		1850	1800
0	4850		2650		1700	
-1.5 m	4800		2600	2550	1650	
-3.0 m	4900		2600			
-4.5 m						
Max. reach	7.15 m		(360°) 1350			

2.65 m dipperstick and 560 l GP bucket

Reach Height	3 m		4.50 m		6 m	
	Front	360°	Front	360°	Front	360°
6.0 m			2400*		1850*	
4.5 m			2700*		2050	
3.0 m	6050		3200		1950	
1.5 m			2900		1850	
0	4250*		2700		1750	
-1.5 m	4850		2600		1700	
-3.0 m	4950		2650			
-4.5 m						
Max. reach	7.50 m		(360°) 1250			

WX150 PL - 4.30 m BOOM

1.50 m dipperstick and 560 l GP bucket

Reach Height	3 m		4.50 m		6 m	
	Front	360°	Front	360°	Front	360°
6.0 m						
4.5 m	5150*		4000*	3650		
3.0 m			4750*	3450	3700*	2200
1.5 m			5450*	3250	3950*	2100
0	5800*		5500*	3150		
-1.5 m	7000*	6050	4750*	3200		
-3.0 m						
-4.5 m						
Max. reach	6.15 m		(Font) 3800*		(360°) 2050	

WX150 PL - ADJUSTABLE BOOM

1.50 m dipperstick and 560 l GP bucket

Reach Height	3 m		4.50 m		6 m	
	Front	360°	Front	360°	Front	360°
6.0 m						
4.5 m	5100*		3850*	3700		
3.0 m			4650*	3400	3600*	2150
1.5 m			5300*	3150	3800*	2050
0	5850*	5700	5400*	3050		
-1.5 m	6900*	5800	4700*	3050		
-3.0 m	4200*					
-4.5 m						
Max. reach	6.10 m		(Font) 3700*		(360°) 2000	

WX150 PL - ARTICULATED BOOM

1.50 m dipperstick and 560 l GP bucket

Reach Height	3 m		4.50 m		6 m	
	Front	360°	Front	360°	Front	360°
6.0 m			4500*	3900*	3750	
4.5 m			6150*	4300*	3700	
3.0 m				5050*	3400	3750*
1.5 m				5500*	3200	3900*
0				5250*	3050	3650*
-1.5 m				4350*	3100	2000
-3.0 m						
-4.5 m						
Max. reach	6.45 m		(Font) 3550*		(360°) 1850	

- Lift capacities are taken in accordance with SAEJ1097.

- Lift capacities shown in kg do not exceed 75 % of the tipping load or 87 % of the hydraulic lift capacity.

- Capacities that are marked with an asterisk are hydraulic limited.

- Machine in "LIFT" mode.

- Reach is computed using the horizontal distance from the swing centreline of the machine to the load hitching point. The machine must be parked on firm, level ground. If the load is hitched at the tip of the dipperstick, the load raised must be increased by 625 kg after removing the bucket, bucket cylinder, yoke and connecting rod.

- If the machine is equipped with a quick coupler, subtract the weight of the quick coupler from the load shown in the tables to calculate the real lifting capacity.



LIFTING CAPACITY

WX150 PL - 4.30 m BOOM

2.10 m dipperstick and 560 l GP bucket

Reach Height	3 m		4.50 m		6 m	
	Front	360°	Front	360°	Front	360°
6.0 m	2950*					
4.5 m			3450*	2500*		2300
3.0 m	6750*		4350*	3550	3450*	2200
1.5 m			5200*	3300	3800*	2150
0	5600*		5600*	3200	3900*	2050
-1.5 m	7950*	6000	5200*	3150		
-3.0 m	5650*					
-4.5 m						
Max. reach	6.70 m		(Font) 2550*		(360°) 1800	

WX150 PL - ADJUSTABLE BOOM

2.10 m dipperstick and 560 l GP bucket

Reach Height	3 m		4.50 m		6 m	
	Front	360°	Front	360°	Front	360°
6.0 m	2900*					
4.5 m			3350*		2450*	2300
3.0 m	6700*		4250*	3550	3350*	2200
1.5 m			4400*	5100*	3250	2100
0	5700*		5450*	3050	3800*	2000
-1.5 m	7800*	5750	5100*	3000		
-3.0 m	5700*					
-4.5 m						
Max. reach	6.65 m		(Font) 2800*		(360°) 1750	

WX150 PL - ARTICULATED BOOM

2.10 m dipperstick and 560 l GP bucket

Reach Height	3 m		4.50 m		6 m	
	Front	360°	Front	360°	Front	360°
6.0 m	3100*					
4.5 m			3850*	3750	3050*	2300
3.0 m			4700*	3500	3550*	2200
1.5 m			5350*	3250	3800*	2100
0	4250*		5450*	3100	3800*	2000
-1.5 m	6950*	5850	4800*	3050	3250*	2000
-3.0 m	4600*		3200*		3150	
-4.5 m						
Max. reach	7.00 m		(Font) 2700*		(360°) 1650	

2.65 m dipperstick and 560 l GP bucket

Reach Height	3 m		4.50 m		6 m	
	Front	360°	Front	360°	Front	360°
6.0 m	2350*					
4.5 m			2600*	2400*		2300
3.0 m	5500*		3850*	3600	3150*	2250
1.5 m	6950*	6250	4900*	3350	3600*	2150
0	5600*		5450*	3150	3850*	2050
-1.5 m	7950*	5900	5400*	3100	3700*	2000
-3.0 m	6750*	6000	4300*	3150		
-4.5 m						
Max. reach	7.25 m		(Font) 1850*		(360°) 1550	

2.65 m dipperstick and 560 l GP bucket

Reach Height	3 m		4.50 m		6 m	
	Front	360°	Front	360°	Front	360°
6.0 m	2350*					
4.5 m			2750*		2350*	2350
3.0 m	5500*		3750*	3600	3050*	2250
1.5 m	6700*	6150	4750*	3300	3500*	2100
0	5700*		5350*	3050	3750*	2000
-1.5 m	7800*	5650	5250*	3000	3600*	1950
-3.0 m	6750*	5750	4350*	3000		
-4.5 m						
Max. reach	7.15 m		(Font) 2050*		(360°) 1550	

2.65 m dipperstick and 560 l GP bucket

Reach Height	3 m		4.50 m		6 m	
	Front	360°	Front	360°	Front	360°
6.0 m			2400*		1900*	
4.5 m			2750*		2550*	2350
3.0 m	6650*		4300*	3600	3350*	2250
1.5 m			5100*	3300	3700*	2100
0	4300*		5450*	3100	3800*	2000
-1.5 m	6500*	5750	5100*	3000	3500*	1950
-3.0 m	5750*		3900*		3050	
-4.5 m						
Max. reach	7.50 m		(Font) 1950*		(360°) 1450	

WX150 P2A - 4.30 m BOOM

1.50 m dipperstick and 560 l GP bucket

Reach Height	3 m		4.50 m		6 m	
	Front	360°	Front	360°	Front	360°
6.0 m						
4.5 m	5150*		4000*			
3.0 m			4750*	4450	3700*	2800
1.5 m			5450*	4200	3950*	2750
0	5800*		5550*	4100		
-1.5 m	7000*		4750*	4150		
-3.0 m						
-4.5 m						
Max. reach	6.15 m		(Font) 3800*		(360°) 2650	

WX150 P2A - ADJUSTABLE BOOM

1.50 m dipperstick and 560 l GP bucket

Reach Height	3 m		4.50 m		6 m	
	Front	360°	Front	360°	Front	360°
6.0 m						
4.5 m	5100*		3850*			
3.0 m			4650*	4400	3600*	2750
1.5 m			5300*	4150	3800*	2650
0	5850*		5400*	4000		
-1.5 m	6900*		4700*	4000		
-3.0 m	4200*					
-4.5 m						
Max. reach	6.10 m		(Font) 3700*		(360°) 2600	

WX150 P2A - ARTICULATED BOOM

1.50 m dipperstick and 560 l GP bucket

Reach Height	3 m		4.50 m		6 m	
	Front	360°	Front	360°	Front	360°
6.0 m	3900*					
4.5 m	4500*		3900*			
3.0 m	6100*		5050*	4400	3750*	2800
1.5 m			5500*	4150	3900*	2700
0			5250*	4050	3650*	2650
-1.5 m	5750*		4350*	4050		
-3.0 m						
-4.5 m						
Max. reach	6.45 m		(Font) 3550*		(360°) 2450	

2.10 m dipperstick and 560 l GP bucket

Reach Height	3 m		4.50 m		6 m	
	Front	360°	Front	360°	Front	360°
6.0 m	2950*					
4.5 m			3450*	2500*		
3.0 m	6750*		4350*	3450*	2850	
1.5 m			5200*	4300	3800*	2750
0	5600*		5600*	4150	3900*	2700
-1.5 m	7950*		5200*	4100		
-3.0 m	5650*					
-4.5 m						
Max. reach	6.70 m		(Font) 2550*		(360°) 2300	

2.10 m dipperstick and 560 l GP bucket

Reach Height	3 m		4.50 m		6 m	
	Front	360°	Front	360°	Front	360°
6.0 m	2900*					
4.5 m			3350*		2450*	
3.0 m	6700*		4200*	3350*	2800	
1.5 m			4400*	5100*	4200	2700
0	5700*		5450*	4050	3800*	2600
-1.5 m	7800*	7800	5100*	4000		
-3.0 m	5750*					
-4.5 m						
Max. reach	6.65 m		(Font) 2800*		(360°) 2300	

2.10 m dipperstick and 560 l GP bucket

Reach Height	3 m		4.50 m		6 m	
	Front	360°	Front	360°	Front	360°
6.0 m	3100*					
4.5 m	3800*		3850*		3050*	2950
3.0 m			4700*	4500	3550*	2850
1.5 m			5350*	4250	3800*	2700
0	4250*		5450*	4050	3800*	2650
-1.5 m	7000*		4800*	4050	3250*	2600
-3.0 m	4600*		3200*			
-4.5 m						
Max. reach	6.95 m		(Font) 2700*		(360°) 2150	

- Lift capacities are taken in accordance with SAEJ1097.

- Lift capacities shown in kg do not exceed 75 % of the tipping load or 87 % of the hydraulic lift capacity.

- Capacities that are marked with an asterisk are hydraulic limited.

- Machine in "LIFT" mode.

- Reach is computed using the horizontal distance from the swing centreline of the machine to the load hitching point. The machine must be parked on firm, level ground. If the load is hitched at the tip of the dipperstick, the load raised must be increased by 625 kg after removing the bucket, bucket cylinder, yoke and connecting rod.

- If the machine is equipped with a quick coupler, subtract the weight of the quick coupler from the load shown in the tables to calculate the real lifting capacity.



LIFTING CAPACITY

WX150 P2A - 4.30 m BOOM

2.65 m dipperstick and 560 l GP bucket

Reach Height	3 m		4.50 m		6 m	
	Front	360°	Front	360°	Front	360°
6.0 m			2350*			
4.5 m			2600*		2400*	
3.0 m	5500*		3850*		3150*	2850
1.5 m	7000*		4850*	4300	3600*	2750
0	5600*		5450*	4150	3850*	2650
-1.5 m	7950*	7950	5400*	4050	3700*	2650
-3.0 m	6800*		4350*	4100		
-4.5 m						
Max. reach	7.25 m		(360°) 1850*			

WX150 P2A - ADJUSTABLE BOOM

2.65 m dipperstick and 560 l GP bucket

Reach Height	3 m		4.50 m		6 m	
	Front	360°	Front	360°	Front	360°
6.0 m			2350*			
4.5 m			2750*		2350*	
3.0 m	5500*		3750*		3050*	2850
1.5 m	6700*		4750*	4250	3500*	2700
0	5700*		5350*	4050	3750*	2600
-1.5 m	7850*	7700	5250*	3950	3600*	2550
-3.0 m	6750*		4350*	3950		
-4.5 m						
Max. reach	7.15 m		(360°) 2050*			

WX150 P2A - ARTICULATED BOOM

2.65 m dipperstick and 560 l GP bucket

Reach Height	3 m		4.50 m		6 m	
	Front	360°	Front	360°	Front	360°
6.0 m			2400*		1900*	
4.5 m			2750*		2550*	
3.0 m	6600*		4250*		3550*	2850
1.5 m			5100*	4250	3700*	2750
0	4300*		5450*	4050	3800*	2600
-1.5 m	6500*		5100*	4000	3500*	2550
-3.0 m	5800*		3900*			
-4.5 m						
Max. reach	7.50 m		(Font) 1950*		(360°) 1900	

WX150 P2AL - 4.30 m BOOM

1.50 m dipperstick and 560 l GP bucket

Reach Height	3 m		4.50 m		6 m	
	Front	360°	Front	360°	Front	360°
6.0 m						
4.5 m	5250*		4000*			
3.0 m			4800*		3750*	3600
1.5 m			5500*	5450	3950*	3550
0	6100*		5500*	5450		
-1.5 m	6850*		4650*			
-3.0 m						
-4.5 m						
Max. reach	6.15 m		(Font) 3800*		(360°) 3400	

WX150 P2AL - ADJUSTABLE BOOM

1.50 m dipperstick and 560 l GP bucket

Reach Height	3 m		4.50 m		6 m	
	Front	360°	Front	360°	Front	360°
6.0 m						
4.5 m	5200*		3900*			
3.0 m			4700*		3600*	3600
1.5 m			5350*	5350	3800*	3500
0	6150*		5400*	5350		
-1.5 m	6800*		4650*			
-3.0 m						
-4.5 m						
Max. reach	6.10 m		(Font) 3700*		(360°) 3400	

WX150 P2AL - ARTICULATED BOOM

1.50 m dipperstick and 560 l GP bucket

Reach Height	3 m		4.50 m		6 m	
	Front	360°	Front	360°	Front	360°
6.0 m			4500*		4000*	
4.5 m			6250*		4350*	
3.0 m			5100*		3750*	3600
1.5 m			5500*	5500	3900*	3500
0	4300*		5250*	5450	3650*	3450
-1.5 m	5650*		4250*			
-3.0 m						
-4.5 m						
Max. reach	6.45 m		(Font) 3550*		(360°) 3200	

2.10 m dipperstick and 560 l GP bucket

Reach Height	3 m		4.50 m		6 m	
	Front	360°	Front	360°	Front	360°
6.0 m			3000*			
4.5 m			3500*		2600*	
3.0 m	6950*		4400*		3500*	
1.5 m			5250*	5450	3800*	3550
0	5800*		5600*	5450	3900*	3500
-1.5 m	7850*		5150*			
-3.0 m	5450*					
-4.5 m						
Max. reach	6.70 m		(360°) 2550*			

2.10 m dipperstick and 560 l GP bucket

Reach Height	3 m		4.50 m		6 m	
	Front	360°	Front	360°	Front	360°
6.0 m			2950*			
4.5 m			3400*		2550*	
3.0 m	6900*		4300*		3350*	
1.5 m	4350*		5150*	5350	3700*	3500
0	5850*		5450*	5350	3800*	3400
-1.5 m	7750*		5050*			
-3.0 m	5550*					
-4.5 m						
Max. reach	6.65 m		(360°) 2800*			

2.10 m dipperstick and 560 l GP bucket

Reach Height	3 m		4.50 m		6 m	
	Front	360°	Front	360°	Front	360°
6.0 m			3150*			
4.5 m	4050*		3900*		3100*	
3.0 m			4750*		3600*	
1.5 m			5400*	5400	3850*	3550
0	4400*		5400*	5400	3800*	3450
-1.5 m	6850*		4750*			
-3.0 m	4400*		3000*			
-4.5 m						
Max. reach	6.95 m		(360°) 2700*			

2.65 m dipperstick and 560 l GP bucket

Reach Height	3 m		4.50 m		6 m	
	Front	360°	Front	360°	Front	360°
6.0 m			2350*			
4.5 m			2650*		2400*	
3.0 m	5700*		3900*		3200*	
1.5 m	6550*		4950*	5450	3600*	3550
0	5700*		5500*	5450	3850*	3450
-1.5 m	8200*		5350*	5450	3650*	3450
-3.0 m	6600*		4200*			
-4.5 m						
Max. reach	7.25 m		(360°) 1850*			

2.65 m dipperstick and 560 l GP bucket

Reach Height	3 m		4.50 m		6 m	
	Front	360°	Front	360°	Front	360°
6.0 m			2350*			
4.5 m			2800*		2400*	
3.0 m	5700*		3800*		3100*	
1.5 m	6400*		4800*	5350	3500*	
0	5750*		5350*	5350	3750*	3400
-1.5 m	8050*		5250*	5350	3600*	3350
-3.0 m	6600*		4250*			
-4.5 m						
Max. reach	7.15 m		(360°) 2050*			

2.65 m dipperstick and 560 l GP bucket

Reach Height	3 m		4.50 m		6 m	
	Front	360°	Front	360°	Front	360°
6.0 m			2400*		1950*	
4.5 m			2800*		2600*	
3.0 m	6800*		4350*		3350*	
1.5 m			5150*	5400	3700*	3550
0	4400*		5450*	5400	3800*	3450
-1.5 m	6700*		5050*	5400	3450*	3400
-3.0 m	5600*		3800*			
-4.5 m						
Max. reach	7.50 m		(360°) 1950*			

- Lift capacities are taken in accordance with SAEJ1097.

- Lift capacities shown in kg do not exceed 75 % of the tipping load or 87 % of the hydraulic lift capacity.

- Capacities that are marked with an asterisk are hydraulic limited.

- Machine in "LIFT" mode.

- Reach is computed using the horizontal distance from the swing centreline of the machine to the load hitching point. The machine must be parked on firm, level ground. If the load is hitched at the tip of the dipperstick, the load raised must be increased by 625 kg after removing the bucket, bucket cylinder, yoke and connecting rod.

- If the machine is equipped with a quick coupler, subtract the weight of the quick coupler from the load shown in the tables to calculate the real lifting capacity.



LIFTING CAPACITY

WX150 P4A - 4.30 m BOOM

1.50 m dipperstick and 560 l GP bucket

Reach Height	3 m		4.50 m		6 m	
	Front	360°	Front	360°	Front	360°
6.0 m						
4.5 m		5250*		4000*		
3.0 m				4800*		3750*
1.5 m				5500*		3950*
0		6100*		5500*		
-1.5 m		6900*		4650*		
-3.0 m						
-4.5 m						
Max. reach	6.15 m		(360°) 3800*			

WX150 P4A - ADJUSTABLE BOOM

1.50 m dipperstick and 560 l GP bucket

Reach Height	3 m		4.50 m		6 m	
	Front	360°	Front	360°	Front	360°
6.0 m						
4.5 m		5200*		3900*		
3.0 m				4700*		3600*
1.5 m				5350*		3800*
0		6150*		5400*		
-1.5 m		6800*		4650*		
-3.0 m						
-4.5 m						
Max. reach	6.10 m		(360°) 3700*			

WX150 P4A - ARTICULATED BOOM

1.50 m dipperstick and 560 l GP bucket

Reach Height	3 m		4.50 m		6 m	
	Front	360°	Front	360°	Front	360°
6.0 m						
4.5 m		4500*		4000*		
3.0 m		6250*		4350*		3750*
1.5 m				5500*		3900*
0		4300*		5250*		3650*
-1.5 m		5650*		4250*		
-3.0 m						
-4.5 m						
Max. reach	6.45 m		(360°) 3550*			

2.10 m dipperstick and 560 l GP bucket

Reach Height	3 m		4.50 m		6 m	
	Front	360°	Front	360°	Front	360°
6.0 m				3000*		
4.5 m				3500*		2600*
3.0 m		6950*		4400*		3500*
1.5 m				5250*		3800*
0		5750*		5600*		3900*
-1.5 m		7900*		5150*		
-3.0 m		5450*				
-4.5 m						
Max. reach	6.70 m		(360°) 2550*			

2.10 m dipperstick and 560 l GP bucket

Reach Height	3 m		4.50 m		6 m	
	Front	360°	Front	360°	Front	360°
6.0 m				2950*		
4.5 m				3400*		2550*
3.0 m		6900*		4300*		3350*
1.5 m				4350*		3700*
0		5850*		5450*		3800*
-1.5 m		7750*		5050*		
-3.0 m		5550*				
-4.5 m						
Max. reach	6.65 m		(360°) 2800*			

2.10 m dipperstick and 560 l GP bucket

Reach Height	3 m		4.50 m		6 m	
	Front	360°	Front	360°	Front	360°
6.0 m				3100*		
4.5 m				3900*		3100*
3.0 m		4050*		3900*		3100*
1.5 m				5400*		3850*
0		4400*		5400*		3800*
-1.5 m		6850*		4750*		
-3.0 m		4400*		3000*		
-4.5 m						
Max. reach	6.95 m		(360°) 2700*			

2.65 m dipperstick and 560 l GP bucket

Reach Height	3 m		4.50 m		6 m	
	Front	360°	Front	360°	Front	360°
6.0 m				2350*		
4.5 m				2650*		2400*
3.0 m		5700*		3900*		3200*
1.5 m		6600*		4950*		3600*
0		5700*		5500*		3850*
-1.5 m		8150*		5350*		3650*
-3.0 m		6600*		4200*		
-4.5 m						
Max. reach	7.25 m		(360°) 1850*			

2.65 m dipperstick and 560 l GP bucket

Reach Height	3 m		4.50 m		6 m	
	Front	360°	Front	360°	Front	360°
6.0 m				2350*		
4.5 m				2800*		2400*
3.0 m		5700*		3800*		3100*
1.5 m		6400*		4800*		3500*
0		5750*		5350*		3750*
-1.5 m		8050*		5250*		3600*
-3.0 m		6600*		4250*		
-4.5 m						
Max. reach	7.15 m		(360°) 2050*			

2.65 m dipperstick and 560 l GP bucket

Reach Height	3 m		4.50 m		6 m	
	Front	360°	Front	360°	Front	360°
6.0 m				2400*		1950*
4.5 m				2800*		2600*
3.0 m		6800*		4350*		3350*
1.5 m				5150*		3700*
0		4400*		5400*		3800*
-1.5 m		6650*		5050*		3450*
-3.0 m		5600*		3800*		
-4.5 m						
Max. reach	7.50 m		(360°) 1950*			

- Lift capacities are taken in accordance with SAEJ1097.

- Lift capacities shown in kg do not exceed 75 % of the tipping load or 87 % of the hydraulic lift capacity.

- Capacities that are marked with an asterisk are hydraulic limited.

- Machine in "LIFT" mode.

- Reach is computed using the horizontal distance from the swing centreline of the machine to the load hitching point. The machine must be parked on firm, level ground. If the load is hitched at the tip of the dipperstick, the load raised must be increased by 625 kg after removing the bucket, bucket cylinder, yoke and connecting rod.

- If the machine is equipped with a quick coupler, subtract the weight of the quick coupler from the load shown in the tables to calculate the real lifting capacity.



LIFTING CAPACITY

WX150 P - OFFSET BACKHOE BOOM 1.50 m dipperstick and 560 l GP bucket

Reach Height	3 m		4.50 m		6 m	
	Front	360°	Front	360°	Front	360°
6.0 m						
4.5 m						
3.0 m		4700*		3100		1750
1.5 m				2600	1700	1650
0		4600		2500		
-1.5 m		4750	2550	2500		
-3.0 m		4100*				
-4.5 m						
Max. reach 6.15 m		(360°) 1600				

WX150 P - OFFSET BACKHOE BOOM 2.10 m dipperstick and 560 l GP bucket

Reach Height	3 m		4.50 m		6 m	
	Front	360°	Front	360°	Front	360°
6.0 m				2950*		
4.5 m				3200*		1900
3.0 m		5650		3000		1800
1.5 m				2700		1700
0		4600		2500		1600
-1.5 m		4650	2500	2450		
-3.0 m		4900				
-4.5 m						
Max. reach 6.70 m		(360°) 1400				

WX150 PL - OFFSET BACKHOE BOOM 1.50 m dipperstick and 560 l GP bucket

Reach Height	3 m		4.50 m		6 m	
	Front	360°	Front	360°	Front	360°
6.0 m						
4.5 m		4800*	3700*	3550		
3.0 m			4450*	3250	3500*	2000
1.5 m			5100*	3000	3700*	1950
0	6150*	5450	5250*	2900		
-1.5 m	6750*	5600	4550*	2950		
-3.0 m						
-4.5 m						
Max. reach 6.15 m		(Font) 3550*		(360°) 1850		

WX150 PL - OFFSET BACKHOE BOOM 2.10 m dipperstick and 560 l GP bucket

Reach Height	3 m		4.50 m		6 m	
	Front	360°	Front	360°	Front	360°
6.0 m				2900*		
4.5 m				3200*		2450*
3.0 m		6300*	4050*	3400	3250*	2100
1.5 m			4900*	3100	3550*	1950
0	5850*	5450	5250*	2900	3700*	1900
-1.5 m	7650*	5500	4950*	2900		
-3.0 m		5500*				
-4.5 m						
Max. reach 6.70 m		(Font) 2350*		(360°) 1600		

WX150 P2A - OFFSET BACKHOE BOOM 1.50 m dipperstick and 560 l GP bucket

Reach Height	3 m		4.50 m		6 m	
	Front	360°	Front	360°	Front	360°
6.0 m						
4.5 m		4800*		3700*		
3.0 m			4450*	4250	3500*	2650
1.5 m			5100*	3950	3700*	2550
0	6150*	5450	5250*	3850		
-1.5 m	6750*	5600	4550*	3900		
-3.0 m						
-4.5 m						
Max. reach 6.15 m		(Font) 3550*		(360°) 2450		

WX150 P2A - OFFSET BACKHOE BOOM 2.10 m dipperstick and 560 l GP bucket

Reach Height	3 m		4.50 m		6 m	
	Front	360°	Front	360°	Front	360°
6.0 m				2900*		
4.5 m				3200*		2450*
3.0 m		6300*	4050*	4050	3250*	2700
1.5 m			4900*	4050	3550*	2600
0	5850*	5450	5250*	3850	3700*	2500
-1.5 m	7650*	5500	4950*	3850		
-3.0 m		5500*				
-4.5 m						
Max. reach 6.70 m		(Font) 2350*		(360°) 2150		

WX150 P2AL - OFFSET BACKHOE BOOM 1.50 m dipperstick and 560 l GP bucket

Reach Height	3 m		4.50 m		6 m	
	Front	360°	Front	360°	Front	360°
6.0 m						
4.5 m		4900*		3750*		
3.0 m			4500*	3500*	3450	
1.5 m			5150*	3700*	3350	
0	6400*	5200*	5150			
-1.5 m	6650*		4550*			
-3.0 m						
-4.5 m						
Max. reach 6.15 m		(Font) 3550*		(360°) 3250		

WX150 P2AL - OFFSET BACKHOE BOOM 2.10 m dipperstick and 560 l GP bucket

Reach Height	3 m		4.50 m		6 m	
	Front	360°	Front	360°	Front	360°
6.0 m				2900*		
4.5 m				3250*		2550*
3.0 m		6450*	4100*	4100*	3250*	
1.5 m			4900*		3550*	3400
0	6000*	5200*	5200	5200	3700*	3300
-1.5 m	7550*		4900*			
-3.0 m		5300*				
-4.5 m						
Max. reach 6.70 m		(360°) 2350*				

WX150 P4A - OFFSET BACKHOE BOOM 1.50 m dipperstick and 560 l GP bucket

Reach Height	3 m		4.50 m		6 m	
	Front	360°	Front	360°	Front	360°
6.0 m						
4.5 m		4900*		3750*		
3.0 m			4500*		3500*	
1.5 m			5150*		3750*	
0	6400*	5200*	5200*			
-1.5 m	6650*		4500*			
-3.0 m						
-4.5 m						
Max. reach 6.15 m		(360°) 3550*				

WX150 P4A - OFFSET BACKHOE BOOM 2.10 m dipperstick and 560 l GP bucket

Reach Height	3 m		4.50 m		6 m	
	Front	360°	Front	360°	Front	360°
6.0 m				2900*		
4.5 m				3250*		2550*
3.0 m		6450*	4100*	4100*	3250*	
1.5 m			4900*		3550*	3400
0	6000*	5200*	5200*	5200	3700*	3300
-1.5 m	7550*		4900*			
-3.0 m		5300*				
-4.5 m						
Max. reach 6.70 m		(360°) 2350*				

- Lift capacities are taken in accordance with SAEJ1097.

- Lift capacities shown in kg do not exceed 75 % of the tipping load or 87 % of the hydraulic lift capacity.

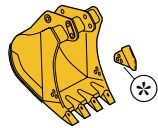
- Capacities that are marked with an asterisk are hydraulic limited.

- Machine in "LIFT" mode.

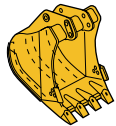
- Reach is computed using the horizontal distance from the swing centreline of the machine to the load hitching point. The machine must be parked on firm, level ground. If the load is hitched at the tip of the dipperstick, the load raised must be increased by 625 kg after removing the bucket, bucket cylinder, yoke and connecting rod.

- If the machine is equipped with a quick coupler, subtract the weight of the quick coupler from the load shown in the tables to calculate the real lifting capacity.

BUCKET CAPACITIES



1 earthmoving
general purpose

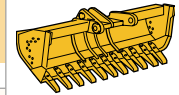


2 earthmoving
heavy duty

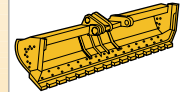


3 trench
with ejector

	CECE	CAPACITY		WIDTH	RADIUS	WEIGHT
		SAE				
		heaped	struck			
		L		m	m	kg
1*	370	380	310	0.60 - 0.68*	1.32	390
	480	505	400	0.75 - 0.83*	1.32	420
	560	590	460	0.85 - 0.93	1.32	445
	630	675	520	0.95 - 1.03*	1.32	475
	710	765	580	1.05 - 1.13*	1.32	520
	820	900	670	1.20 - 1.28*	1.32	600
2	370	380	310	0.60	1.32	415
	480	505	400	0.75	1.32	450
	560	590	460	0.85	1.32	480
	630	675	520	0.95	1.32	520
	710	765	580	1.05	1.32	560
	820	900	670	1.20	1.32	650
3	200	195	170	0.35 - 0.43*	1.34	375
	265	270	230	0.45 - 0.53*	1.34	410
4	280	-	-	2.40	0.71	400
	420	-	-	1.25	1.00	350
	620	-	-	1.80	1.00	465
5	260	-	-	2.20	0.68	485
	280	-	-	2.40	0.68	455
	420	-	-	1.25	0.97	385
	620	-	-	1.80	0.97	510
6	340	-	-	0.35 - 2.10	1.04	335
	400	-	-	0.50 - 2.60	1.04	400



4 ditch
cleaning
with teeth



5 ditch cleaning
with reversible
blade
(smooth or
serrated)

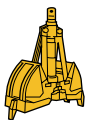


6 V-line bucket

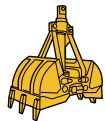


An hydraulic quick hitch is available as an option (consult Case).
Earthmoving buckets are fitted with special pins to eliminate side play.
Standard buckets are fitted with teeth with replaceable tips. * Option : Side cutter

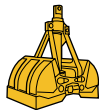
CLAMSHELLS CAPACITIES



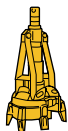
1 trench
with ejector



2 earthmoving

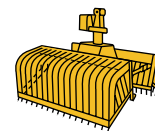


3 rehandling



4 boring

	CAPACITY		WIDTH	WEIGHT
	L		m	kg
1	100		0.32	435
	145		0.47	495
	210		0.65	665
2	250		0.79	545
	400		0.96	640
3	400		0.97	535
	550		1.08	540
	800		1.22	610
4	175		Ø 1.23	575
	70		0.43	435
	130		0.60	475
5	1450		1.33	1205
6	-		Ø 1.55	830
	-		Ø 1.56	950
7	0.1 - 0.9 m ²		0.72	675

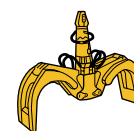


5 sugarbeet

5 scrap



6 stone*



7 wood grab

* Detachable tine points ▲ Heart shaped tines

NOTE: The standard and optional fittings can vary according to the demands and specific regulations of each country. The illustrations may include optional fittings or fittings not mentioned above. Moreover, CNH France S.A. reserves the right to modify without prior notice its machine specifications, and without incurring any obligations relating to such changes.

Conforms to directive 98/37/CE

