

CASE

CONSTRUCTION

WHEELED EXCAVATORS **WX185 - Series 2**

PRELIMINARY



Engine Horsepower
Max Operating weight
Bucket

118 kW - 158 hp
20450 kg
0.27 m³ to 0.95 m³

P R O F E S S I O N A L P A R T N E R

MAINTENANCE

- Latest generation CASE Family III engine
- Compact upperstructure with catwalk for better service access
- Self diagnosis integrated in the electronic management system
- Longer service intervals (500 hrs oil change interval)
- Easy and simple service point access
- Ecological engine oil draining cap



COMFORT

- Air suspension seat
- Fully glazed cab for outstanding all round visibility
- Full up and over front windscreen
- Automatically operating brake system
- Automatic front axle lock
- Forward/reverse control on joystick
- Dozer blade and stabilisers fine control on joystick
- Simple to select operating modes
- "DIGIPOWER" management control of all hydraulic functions
- Transparent roof
- Tilttable steering column
- Fine grading control mode
- Swing brake modes
- Electric refuel pump
- One key for all locking functions

PERFORMANCE

- Compact upperstructure
- Lifting capacity equivalent to conventional design models
- 30 km/h top speed
- PowerShift gear box, on the move gear shifting
- Superior engine power
- High swing torque
- Best in class tractive effort
- Powerboost
- Hydraulic tool pressure and flow pre-setting
- Hydraulically driven fan with thermostatic regulation
- Full stabilisers and blade independence
- Total chassis versatility
- Independent swing hydraulic circuit
- Mechanically lockable large section stabilisers pads
- Common fitting buckets with CASE CX range
- Quick couplers for previous WX range buckets
- Quick connectors on hydraulic options



SAFETY

- Unique CASE Inching and extra slow speed
- Integrated anti theft device
- Engine safe warm up control
- Road travel mode with swing and attachment circuit cut out
- Automatic battery cut off
- Stabiliser cylinder protection

ENGINE

Make	CASE - Family III
Model	659TA-M2
Type	6 cyl. turbo charged, direct injection intercooler
Displacement	5.9 l
Bore x stroke	102 x 120 mm
Output power (ISO 14396)	118 kW/158 hp
Rated speed	2150 rpm

The latest generation of CASE Family III engines are in accordance with the EU Tier 3 directive. Modern, quiet with low fuel consumption and designed for reliability the CASE engine reduces owning and operating costs. Engine auto idle can be deactivated manually.



HYDRAULIC CIRCUIT

Main pumps	3 variable displacement, axial piston
Total maximum flow	2 x 175 + 100 l/min
Attachment maximum pressure/Powerboost	350/370 bar
Travel maximum pressure	350 bar
Swing maximum pressure	390 bar

The "DIGIPOWER" hydraulic control system monitors the two main pumps, the separated "closed circuit swing pump", and regulates engine power according to demand. It offers 7 selectable power levels (4 digging and 3 lifting), including levelling mode for fine grading operations. Power boost is automatic in lifting mode and can be activated for 8 seconds in the other modes).

UNDERCARRIAGE

The CASE WX range features a new PowerShift transmission with a two gear range, and with "on the move" shifting. The maximum travel speed is increased up to 30 km/h, to reduce on road down time.

The typical CASE "Inching" associated with the "creeper" position allows safe and accurate movements, for truck trailer loading for instance.

Modular frame allows the assembly of all possible chassis configuration, according to the customer request. Either pin-on fitted or welded on the main structure, the stabilisers beams design is outstandingly rigidity.

The stabilisers and blade are fully independent, (front/rear and left/right), controlled by the dipper joystick and easily selectable by switches.

The large section stab pads are lockable to ensure the best dynamic stability to the machine, in soft ground condition, keeping the articulation for hard surface applications.

Right hand side capacious tool box under the steps is as standard.

Maximum travel speed (field range)	8 km/h
Maximum travel speed (road range)	20 or 30 km/h
Maximum drawbar pull (field range)	115 kN

As on previous range the front axle lock is automatic.



CAB

The cab has been designed with the operator in mind:

- Spacious and ergonomic environment with tinted safety glass offering an outstanding all round visibility
- Modular total or partial opening windscreen with transparent rain shield
- Large roof window with sunshade
- Fully adjustable air suspension seat
- Steering column with continuously adjustable inclination
- Exceptionally quiet cab
- Easy to operate joystick controls and pedals

Large LCD display integrating working mode information, auto diagnostic function and the working status.

For operator convenience, all the major operating controls are located on the joysticks:

- Forward/reverse/neutral travel
- Attachment/Blade-Stabilisers selection
- Levelling mode
- Power boost
- Hydraulic options

NOISE LEVELS

LwA	106 dBA
LpA	76 dBA



BRAKE SYSTEM

In order to keep the operator focussed on his work, the travel brake is automatically activated when the pedal is released. The brakes are multi-disc design for smooth operation.

TYRES

4 Wheels	18 - 19.5XF
8 Wheels with twinning rings	10.00 - 20

SWING

The swing function is operated by a hydraulic closed circuit coupled with a mechanical reducer integrating an automatic static brake. The hydro-static swing brake is adjustable with 3 settings.

Swing speed	9 rpm
Swing torque	48 kNm

CAPACITIES

Engine oil	16 l
Cooling circuit	30 l
Fuel tank	360 l
Hydraulic tank	140 l
Swing gear	3.5 l

UPPERSTRUCTURE

The new CASE WX offers as standard a compact upperstructure, integrating a transversal engine position. Even with a reduced tail radius, the service point accessibility has been maintained and the catwalk remains the best access location for servicing.

Tail swing radius	2.15 m
--------------------------	--------



ELECTRICAL CIRCUIT

Voltage output	24 V
Batteries	2 x 12 V - 100 Ah
Alternator	70 A

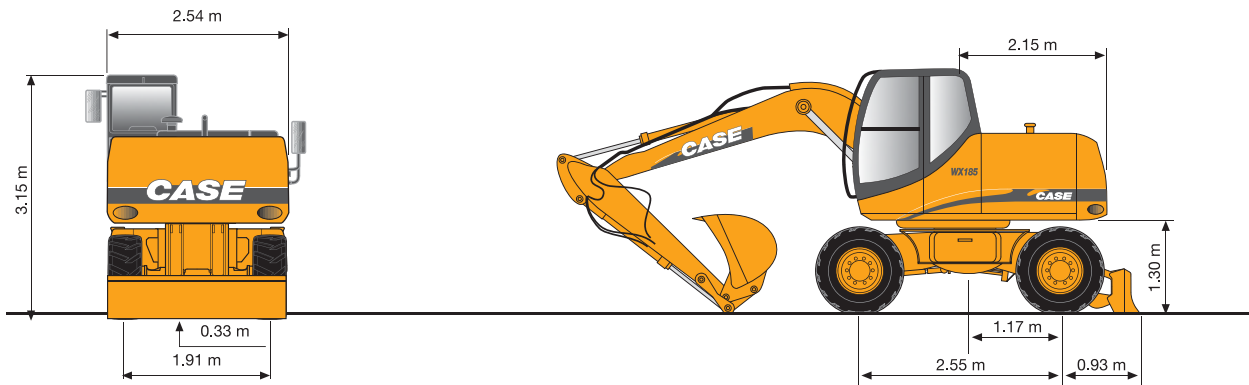
Automatic isolator switch and 12 V power supply in cab are as standard.



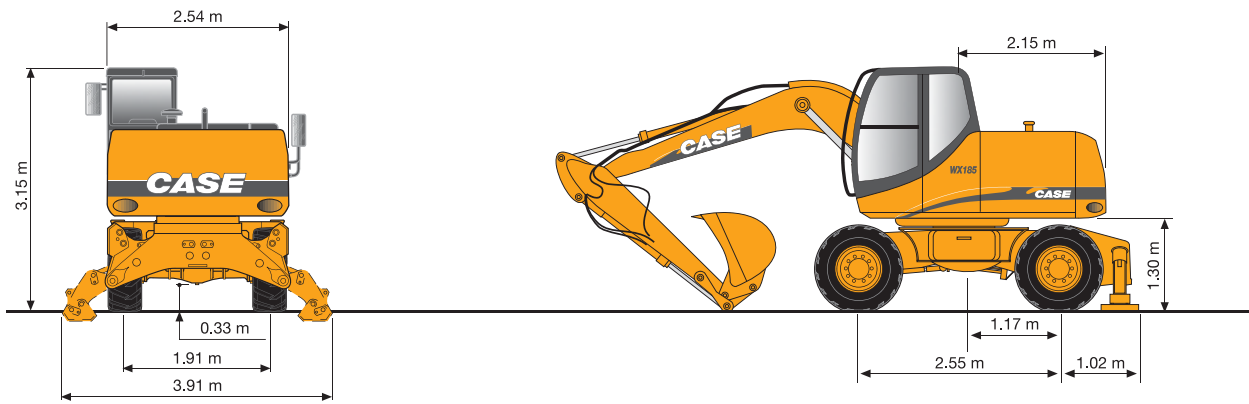


OVERALL DIMENSIONS

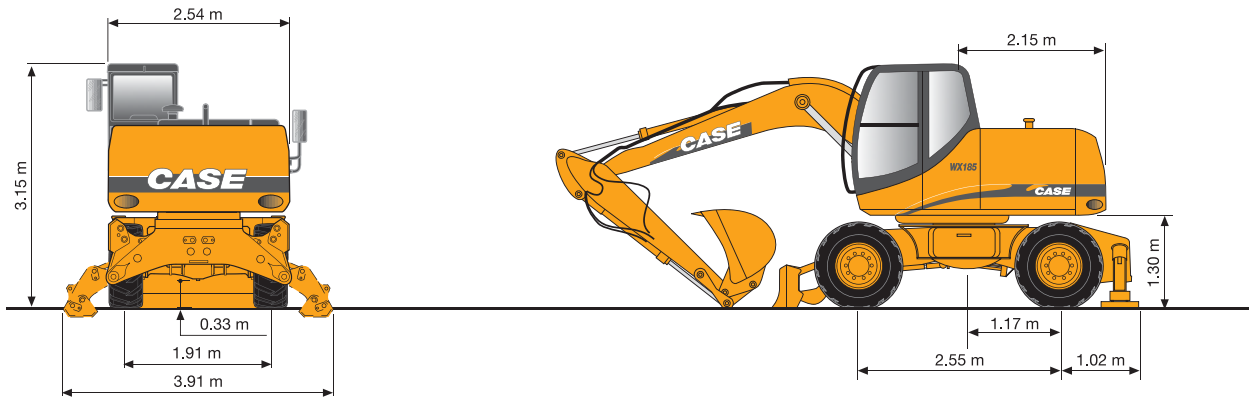
PL



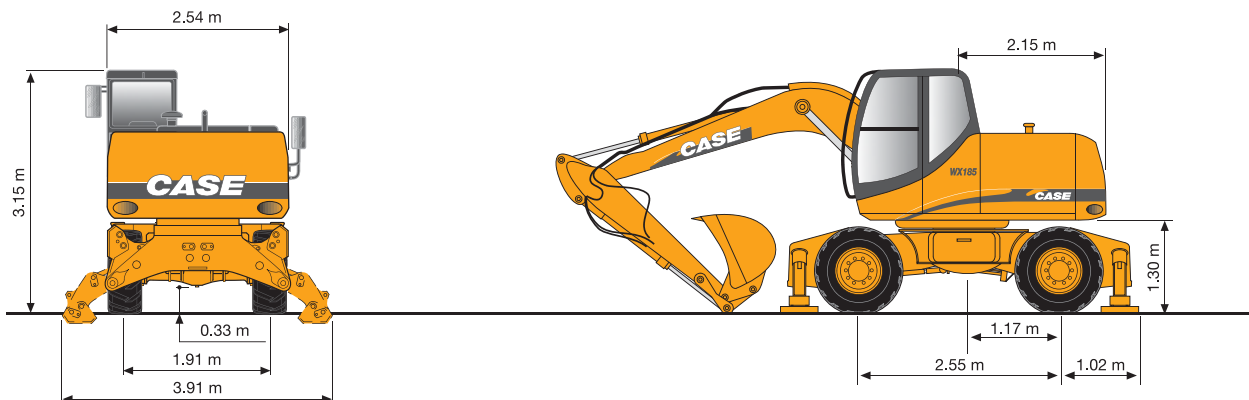
P2A



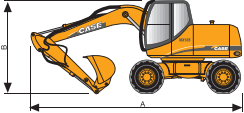
P2AL







P4A



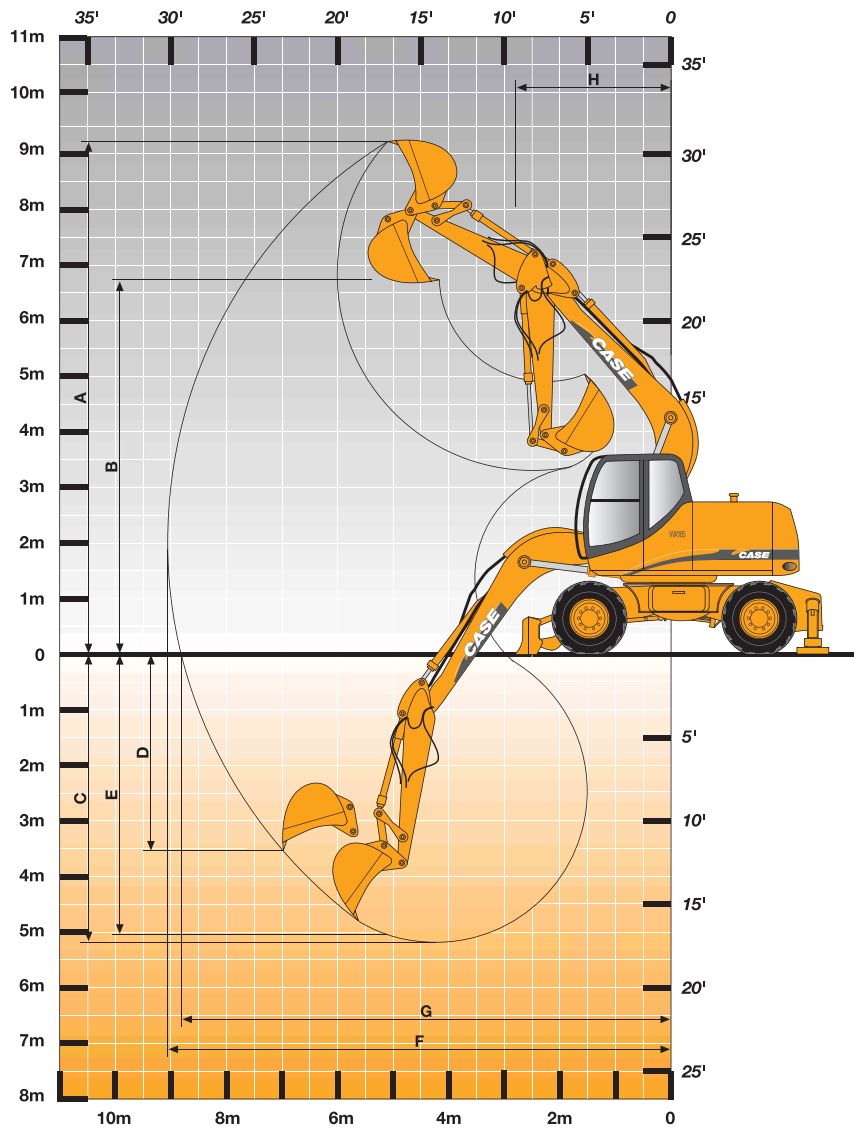
SHIPPING DIMENSIONS / WEIGHT



	PL			P2A			P2AL			P4A			
	Rear blade			Rear stabilisers			Front blade + rear stab.			4 Stabilisers			
	A mm	B mm	 kg	A mm	B mm	 kg	A mm	B mm	 kg	A mm	B mm	 kg	
MONO BOOM	Dipper 2.00 m	8573	2905	17 866	8573	2905	18 416	8573	2905	18 996	8573	2905	19 456
	Dipper 2.40 m	8603	2983	17 926	8603	2983	18 476	8603	2983	19 066	8603	2983	19 526
	Dipper 2.80 m	8631	3173	18 016	8631	3173	18 576	8631	3173	19 156	8631	3173	19 616
ARTICULATED BOOM	Dipper 2.00 m	8724	3020	18 680	8724	3020	19 230	8724	3020	19 810	8724	3020	20 270
	Dipper 2.40 m	8687	3001	18 740	8687	3001	19 290	8687	3001	19 880	8687	3001	20 340
	Dipper 2.80 m	8676	3081	18 830	8676	3081	19 390	8676	3081	19 970	8676	3081	20 430

Weights are indicated fitted with 495 Kg bucket





WORKING RANGE

	m	MONO BOOM 5.20 m			ARTICULATED BOOM 5.30 m		
		DIPPER			DIPPER		
		2.0 m	2.4 m	2.8 m	2.0 m	2.4 m	2.8 m
A Max. digging height		9.0	9.2	9.5	9.9	10.2	10.5
B Max. loading height		6.4	6.6	6.8	7.2	7.5	7.8
C Max. digging depth		5.2	5.6	6.0	5.2	5.6	6.0
D Max. vert. wall digging depth		3.6	3.9	4.3	3.7	4.0	4.4
E Max. depth of cut for 8' level bottom		4.9	5.4	5.8	5.1	5.5	5.9
F Max. digging reach		8.8	9.2	9.6	9.0	9.3	9.7
G Max. digging reach at ground level		8.6	9.0	9.4	8.8	9.2	9.6
H Min. front swing radius		3.2	3.3	3.3	2.7	2.9	3.0
Bucket breakout force (370 bar)	kN	134	134	134	134	134	134
Stick crowd force (370 bar)	kN	108	99	87	108	99	87

BUCKETS

General purpose

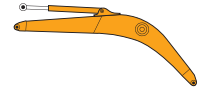
Capacity SAE	l	270	380	505	660	750	850	950
Width	mm	500	600	750	900	1000	1100	1200
Weight	kg	350	380	440	495	525	550	590

Heavy duty

Capacity SAE	l					750	850	950
Width	mm					1000	1100	1200
Weight	kg					590	625	665

LIFTING CAPACITIES

MONO BOOM



MONO BOOM: 5.20 m
BUCKET (CECE): 0.66 m³

Height	Reach								At max reach		
	3.0 m		4.5 m		6.0 m		7.5 m		Front	360°	Max reach
	Front	360°	Front	360°	Front	360°	Front	360°	Front	360°	Max reach
9.0 m											
7.5 m									3.0*	3.0*	4.8
6.0 m					3.9*	2.9			2.7*	2.7	6.3
4.5 m			6.5*	4.6	5.5*	2.8			2.7*	2.0	7.1
3.0 m			8.1*	4.1	6.1*	2.6	3.2*	1.8	2.8*	1.7	7.6
1.5 m			9.4*	3.7	6.7*	2.4	4.5*	1.7	3.2*	1.6	7.6
0.0 m	6.8*	6.6	9.7*	3.5	6.6	2.3			3.9*	1.6	7.4
-1.5 m	11.9*	6.7	9.0*	3.5	6.5	2.3			5.3	1.9	6.8
-3.0 m	10.1*	6.9	7.4*	3.6					5.3*	2.4	5.8
-4.5 m											

Height	Reach								At max reach		
	3.0 m		4.5 m		6.0 m		7.5 m		Front	360°	Max reach
	Front	360°	Front	360°	Front	360°	Front	360°	Front	360°	Max reach
9.0 m											
7.5 m									2.4*	2.4*	5.4
6.0 m					4.2*	3.0			2.1*	2.1*	6.8
4.5 m					5.1*	2.8	2.3*	1.8	2.1*	1.8	7.5
3.0 m	12.8*	7.8	7.6*	4.2	5.8*	2.6	4.4*	1.8	2.2*	1.6	7.9
1.5 m			9.1*	3.7	6.5*	2.4	4.6	1.7	2.3*	1.5	8.0
0.0 m	7.0*	6.5	9.7*	3.5	6.6	2.3	4.5	1.6	3.0*	1.5	7.8
-1.5 m	10.7*	6.5	9.2*	3.4	6.5	2.2			3.9*	1.6	7.3
-3.0 m	11.2*	6.7	7.9*	3.5	5.5*	2.2			5.0*	2.1	6.3
-4.5 m			4.7*	3.7					4.5*	3.5	4.6

Height	Reach								At max reach		
	3.0 m		4.5 m		6.0 m		7.5 m		Front	360°	Max reach
	Front	360°	Front	360°	Front	360°	Front	360°	Front	360°	Max reach
9.0 m											
7.5 m					2.0*	2.0*			1.9*	1.9*	6.0
6.0 m					4.0*	3.0			1.7*	1.7*	7.2
4.5 m					4.7*	2.9	3.2*	1.8	1.7*	1.6	8.0
3.0 m	11.2*	8.2	7.0*	4.3	5.4*	2.7	4.6*	1.7	1.8*	1.4	8.3
1.5 m	6.6*	6.6*	8.7*	3.8	6.2*	2.4	4.6	1.6	2.0*	1.3	8.4
0.0 m	7.1*	6.4	9.5*	3.4	6.5	2.2	4.5	1.5	2.3*	1.3	8.2
-1.5 m	9.9*	6.4	9.3*	3.3	6.4	2.1	4.5	1.5	3.0*	1.4	7.7
-3.0 m	12.1*	6.5	8.3*	3.3	5.8*	2.1			4.4*	1.8	6.8
-4.5 m	8.3*	6.8	5.8*	3.5					4.5*	2.8	5.3

Height	Reach								At max reach		
	3.0 m		4.5 m		6.0 m		7.5 m		Front	360°	Max reach
	Front	360°	Front	360°	Front	360°	Front	360°	Front	360°	Max reach
9.0 m											
7.5 m									3.0*	3.0*	4.8
6.0 m					3.9*	3.9*			2.7*	2.7*	6.3
4.5 m			6.5*	6.5*	5.5*	5.0			2.7*	2.7*	7.1
3.0 m			8.1*	7.7	6.1*	4.8	3.2*	3.2*	2.8*	2.8*	7.6
1.5 m			9.4*	7.2	6.7*	4.6	4.5*	3.2	3.2*	3.1	7.6
0.0 m	6.8*	6.8*	9.7*	6.9	6.9*	4.4			3.9*	3.2	7.4
-1.5 m	11.9*	11.9*	9.0*	6.9	6.5*	4.4			5.3*	3.6	6.8
-3.0 m	10.1*	10.1*	7.4*	7.0					5.3*	4.7	5.8
-4.5 m											

Height	Reach								At max reach		
	3.0 m		4.5 m		6.0 m		7.5 m		Front	360°	Max reach
	Front	360°	Front	360°	Front	360°	Front	360°	Front	360°	Max reach
9.0 m											
7.5 m									2.4*	2.4*	5.4
6.0 m					4.2*	4.2*			2.1*	2.1*	6.8
4.5 m					5.1*	5.0	2.3*	2.3*	2.1*	2.1*	7.5
3.0 m	12.8*	12.8*	7.6*	7.6*	5.8*	4.8	4.4*	3.3	2.2*	2.2*	7.9
1.5 m			9.1*	7.2	6.5*	4.6	5.1*	3.2	2.5*	2.5*	8.0
0.0 m	7.0*	7.0*	9.7*	6.9	6.8*	4.4	5.2*	3.1	3.0*	2.9	7.8
-1.5 m	10.7*	10.7*	9.2*	6.8	6.6*	4.3			3.9*	3.2	7.3
-3.0 m	11.2*	11.2*	7.9*	6.9	5.5*	4.4			5.0*	4.0	6.3
-4.5 m			4.7*	4.7*					4.5*	4.5*	4.6

Height	Reach								At max reach		
	3.0 m		4.5 m		6.0 m		7.5 m		Front	360°	Max reach
	Front	360°	Front	360°	Front	360°	Front	360°	Front	360°	Max reach
9.0 m											
7.5 m					2.0*	2.0*			1.9*	1.9*	6.0
6.0 m					4.0*	4.0*			1.7*	1.7*	7.2
4.5 m					4.7*	4.7*	3.2*	3.2*	1.7*	1.7*	8.0
3.0 m	11.2*	11.2*	7.0*	7.0*	5.4*	4.8	4.6*	3.3	1.8*	1.8*	8.3
1.5 m	6.6*	6.6*	8.7*	7.2	6.2*	4.6	4.9*	3.2	2.0*	2.0*	8.4
0.0 m	7.1*	7.1*	9.5*	6.9	6.7*	4.3	5.1*	3.1	2.3*	2.3*	8.2
-1.5 m	9.9*	9.9*	9.3*	6.7	6.6*	4.2	4.6*	3.0	3.0*	2.9	7.7
-3.0 m	12.1*	12.1*	8.3*	6.7	5.8*	4.3			4.4*	3.5	6.8
-4.5 m	8.3*	8.3*	5.8*	5.8*					4.5*	4.5*	5.3

Height	Reach								At max reach		
	3.0 m		4.5 m		6.0 m		7.5 m		Front	360°	Max reach
	Front	360°	Front	360°	Front	360°	Front	360°	Front	360°	Max reach
9.0 m											
7.5 m									3.0*	3.0*	4.8
6.0 m									2.7*	2.7*	6.3
4.5 m			6.5*	6.3	5.5*	3.9			2.7*	2.7*	7.1
3.0 m			8.1*	5.8	6.1*	3.7	3.2*	2.5	2.8*	2.5	7.6
1.5 m			9.4*	5.3	6.1	3.5	4.2	2.4	3.2*	2.3	7.6
0.0 m	6.8*	6.8*	9.7	5.1	5.9	3.3			3.9*	2.4	7.4
-1.5 m	11.9*	10.2	9.0*	5.1	5.9	3.3			4.8	2.7	6.8
-3.0 m	10.1*	10.1*	7.4*	5.2					5.3*	3.5	5.8
-4.5 m											

Height	Reach								At max reach		
	3.0 m		4.5 m		6.0 m		7.5 m		Front	360°	Max reach
	Front	360°	Front	360°	Front	360°	Front	360°	Front	360°	Max reach
9.0 m											
7.5 m									2.4*	2.4*	5.4
6.0 m					4.2*	4.0			2.1*	2.1*	6.8
4.5 m					5.1*	3.9	2.3*	2.3*	2.1*	2.1*	7.5
3.0 m	12.8*	11.6	7.6*	5.9	5.8*	3.7	4.3	2.5	2.2*	2.2	7.9
1.5 m			9.1*	5.4	6.1	3.5	4.2	2.4	2.3*	2.1	8.0
0.0 m	7.0*	7.0*	9.7*	5.1	5.9	3.3	4.1	2.3	3.0*	2.2	7.8
-1.5 m	10.7*	10.1	9.2*	5.0	5.8	3.2			3.9*	2.4	7.3
-3.0 m	11.2*	10.3	7.9*	5.1	5.5*	3.3			5.0*	3.0	6.3
-4.5 m			4.7*	4.7*					4.5*	4.5*	4.6

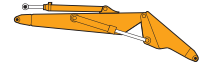
Height	Reach								At max reach		
	3.0 m		4.5 m		6.0 m		7.5 m		Front	360°	Max reach
	Front	360°	Front	360°	Front	360°	Front	360°	Front	360°	Max reach
9.0 m											
7.5 m					2.0*	2.0*			1.9*	1.9*	6.0
6.0 m					4.0*	4.0*			1.7*	1.7*	7.2
4.5 m					4.7*	3.9	3.2*	2.6	1.7*	1.7*	8.0
3.0 m	11.2*	11.2*	7.0*	6.0	5.4*	3.7	4.3	2.5	1.8*	1.8*	8.3
1.5 m	6.6*	6.6*	8.7*	5.4	6.1	3.4	4.2	2.4	2.0*	1.9	8.4
0.0 m	7.1*	7.1*	9.5*	5.1	5.9	3.2	4.1	2.3	2.3*	2.0	8.2
-1.5 m	9.9*	9.9	9.3*	4.9	5.8	3.1	4.0	2.2	3.0*	2.1	7.7
-3.0 m	12.1*	10.1	8.3*	4.9	5.8	3.2			4.4*	2.6	6.8
-4.5 m	8.3*	8.3*	5.8*	5.1					4.5*	4.0	5.3

Height	Reach								At max reach		
	3.0 m		4.5 m		6.0 m		7.5 m		Front	360°	Max reach
	Front	360°	Front	360°	Front	360°	Front	360°	Front	360°	Max reach
9.0 m											
7.5 m									3.0*	3.0*	4.8
6.0 m					3.9*	3.9*			2.7*	2.7*	6.3
4.5 m			6.5*	6.5*	5.5*	5.5*			2.7*	2.7*	7.1
3.0 m			8.1*	8.1*	6.1*	6.1	3.2*	3.2*	2.8*	2.8*	7.6
1.5 m			9.4*	9.4	6.7*	5.9	4.5*	4.1	3.2*	3.2*	7.6
0.0 m	6.8*	6.8*	9.7*	9.1	6.9*	5.7			3.9*	3.9*	7.4
-1.5 m	11.9*	11.9*	9.0*	9.0	6.5*	5.6			5.3*	4.6	6.8
-3.0 m	10.1*	10.1*	7.4*	7.4*					5.3*	5.3*	5.8
-4.5 m											

Height	Reach								At max reach		
	3.0 m		4.5 m		6.0 m		7.5 m		Front	360°	Max reach
	Front	360°	Front	360°	Front	360°	Front	360°	Front	360°	Max reach
9.0 m											
7.5 m									2.4*	2.4*	5.4
6.0 m					4.2*	4.2*			2.1*	2.1*	6.8
4.5 m					5.1*	5.1*	2.3*	2.3*	2.1*	2.1*	7.5
3.0 m	12.8*	12.8*	7.6*	7.6*	5.8*	5.8*	4.4*	4.2	2.2*	2.2*	7.9
1.5 m			9.1*	9.1*	6.5*	5.9	5.1*	4.1	2.5*	2.5*	8.0
0.0 m	7.0*	7.0*	9.7*	9.1	6.8*	5.7	5.2*	4.0	3.0*	3.0*	7.8
-1.5 m	10.7*	10.7*	9.2*	9.0	6.6*						

LIFTING CAPACITIES

ARTICULATED BOOM



ARTICULATED BOOM: 2.00 m
TOP BOOM: 3.60 m
BUCKET (CECE): 0.66 m³

Height	Reach						At max reach				
	3.0 m		4.5 m		6.0 m		7.5 m		Max reach		
	Front	360°	Front	360°	Front	360°	Front	360°			
9.0 m											
7.5 m			5.0*	4.9				3.1*	3.1*	5.1	
6.0 m			5.5*	5.0	4.5*	3.0		2.7*	2.5	6.5	
4.5 m	8.7*	8.7*	6.3*	4.9	5.1*	3.1		2.7*	1.9	7.3	
3.0 m	11.9*	8.7	7.5*	4.7	5.6*	3.0	3.9*	1.8	2.8*	1.6	7.7
1.5 m	12.5*	8.5	9.1*	4.7	6.3*	2.9	4.3*	1.7	3.1*	1.5	7.8
0.0 m	15.0*	8.3	9.5*	4.5	6.8	2.6	4.0*	1.6	3.6*	1.5	7.6
-1.5 m	16.2*	7.8	9.8*	4.1	6.9	2.4			4.7*	1.7	7.1
-3.0 m	16.7*	7.5	9.6*	3.8	4.8*	2.3			4.7*	2.3	6.1
-4.5 m											

Height	Reach						At max reach				
	3.0 m		4.5 m		6.0 m		7.5 m		Max reach		
	Front	360°	Front	360°	Front	360°	Front	360°			
9.0 m											
7.5 m			5.0*	5.0*					3.1*	3.1*	5.1
6.0 m			5.5*	5.5*	4.5*	4.1			2.7*	2.7*	6.5
4.5 m	8.7*	8.7*	6.3*	6.3*	5.1*	4.1			2.7*	2.7*	7.3
3.0 m	11.9*	11.8	7.5*	6.2	5.6*	4.1	3.9*	2.6	2.8*	2.4	7.7
1.5 m	12.5*	11.7	9.1*	6.1	6.3	4.0	4.3	2.5	3.1*	2.2	7.8
0.0 m	15.0*	11.8	9.6*	6.2	6.3	3.7	4.0*	2.4	3.6*	2.3	7.6
-1.5 m	16.2*	11.7	9.8*	5.9	6.2	3.5			4.6	2.6	7.1
-3.0 m	16.7*	11.3	9.6*	5.4	4.8*	3.3			4.7*	3.3	6.1
-4.5 m											

Height	Reach						At max reach				
	3.0 m		4.5 m		6.0 m		7.5 m		Max reach		
	Front	360°	Front	360°	Front	360°	Front	360°			
9.0 m											
7.5 m			4.8*	4.8*					2.5*	2.5*	5.7
6.0 m			5.2*	5.0	4.5*	3.1			2.2*	2.2	7.0
4.5 m			5.7*	4.9	4.7*	3.1	3.3*	1.9	2.2*	1.7	7.8
3.0 m	12.4*	8.6	7.0*	4.7	5.3*	3.1	4.2*	1.8	2.2*	1.5	8.1
1.5 m	12.2*	8.4	8.6*	4.6	6.0*	3.0	4.8	1.8	2.4*	1.4	8.2
0.0 m	14.2*	8.4	9.5*	4.5	6.6*	2.7	4.6	1.6	2.8*	1.4	8.0
-1.5 m	16.0*	7.8	9.6*	4.2	6.8	2.4			3.5*	1.5	7.5
-3.0 m	16.6*	7.7	10.0*	3.8	6.1*	2.3			4.5*	1.9	6.6
-4.5 m	12.5*	7.3							9.4*	5.3	3.6

Height	Reach						At max reach				
	3.0 m		4.5 m		6.0 m		7.5 m		Max reach		
	Front	360°	Front	360°	Front	360°	Front	360°			
9.0 m											
7.5 m			4.8*	4.8*					2.5*	2.5*	5.7
6.0 m			5.2*	5.2*	4.5*	4.1			2.2*	2.2*	7.0
4.5 m			5.7*	5.7*	4.7*	4.1	3.3	2.6	2.2*	2.2*	7.8
3.0 m	12.4*	11.8	7.0*	6.2	5.3*	4.0	4.2	2.6	2.2*	2.2	8.1
1.5 m	12.2*	11.5*	8.6*	6.1	6.0*	4.0	4.4	2.5	2.4*	2.0	8.2
0.0 m	14.2*	11.6	9.5*	6.1	6.2	3.8	4.2	2.4	2.8*	2.1	8.0
-1.5 m	16.0*	11.7	9.6*	5.9	6.2	3.5			3.5*	2.3	7.5
-3.0 m	16.6*	11.5	10.0*	5.5	6.0	3.3			4.5*	2.8	6.6
-4.5 m	12.5*	11.0							9.4*	7.9	3.6

Height	Reach						At max reach				
	3.0 m		4.5 m		6.0 m		7.5 m		Max reach		
	Front	360°	Front	360°	Front	360°	Front	360°			
9.0 m									2.7*	2.7*	4.3
7.5 m					2.9*	2.9*			2.0*	2.0*	6.3
6.0 m					4.1*	3.1			1.8*	1.8*	7.5
4.5 m			5.3*	4.9	4.4*	3.1	3.5*	1.9	1.7*	1.5	8.2
3.0 m	10.8*	8.7	6.6*	4.7	5.0*	3.0	4.3*	1.9	1.8*	1.3	8.5
1.5 m	12.0*	8.3	8.1*	4.5	5.7*	3.0	4.6*	1.8	1.9*	1.2	8.6
0.0 m	13.5*	8.4	9.3*	4.5	6.4*	2.8	4.7	1.7	2.2*	1.2	8.4
-1.5 m	15.5*	7.9	9.5*	4.2	6.7	2.5	4.5	1.5	2.7*	1.3	7.9
-3.0 m	16.2*	7.6	9.8*	3.9	6.6*	2.2			3.7*	1.6	7.1
-4.5 m	14.6*	7.2	7.7*	3.6					6.2*	3.1	5.0

Height	Reach						At max reach				
	3.0 m		4.5 m		6.0 m		7.5 m		Max reach		
	Front	360°	Front	360°	Front	360°	Front	360°			
9.0 m									2.7*	2.7*	4.3
7.5 m					2.9*	2.9*			2.0*	2.0*	6.3
6.0 m					4.1*	4.1			1.8*	1.8*	7.5
4.5 m			5.3*	5.3*	4.4*	4.1	3.5*	2.7	1.7*	1.7*	8.2
3.0 m	10.8*	10.8*	6.6*	6.2	5.0*	4.0	4.3*	2.7	1.8*	1.8*	8.5
1.5 m	12.0*	11.5	8.1*	6.0	5.7*	3.9	4.4	2.6	1.9*	1.8	8.6
0.0 m	13.5*	11.5	9.3*	6.0	6.1	3.9	4.2	2.4	2.2*	1.9	8.4
-1.5 m	15.5*	11.7	9.5*	5.9	6.3	3.6	4.1	2.3	2.7*	2.0	7.9
-3.0 m	16.2*	11.4	9.8*	5.6	6.0	3.3			3.7*	2.5	7.1
-4.5 m	14.6*	10.9	7.7*	5.3					6.2*	4.5	5.0

Height	Reach						At max reach				
	3.0 m		4.5 m		6.0 m		7.5 m		Max reach		
	Front	360°	Front	360°	Front	360°	Front	360°			
9.0 m											
7.5 m			5.0*	5.0*					3.1*	3.1*	5.1
6.0 m			5.5*	5.5*	4.5*	4.5*			2.7*	2.7*	6.5
4.5 m	8.7*	8.7*	6.3*	6.3*	5.1*	5.1*			2.7*	2.7*	7.3
3.0 m	11.9*	11.9*	7.5*	7.5*	5.6*	5.0	3.9*	3.3	2.8*	2.8*	7.7
1.5 m	12.5*	12.5*	9.1*	7.7	6.3*	5.0	4.3*	3.3	3.1*	3.0	7.8
0.0 m	15.0*	15.0*	9.6*	7.7	6.8*	4.9	4.0*	3.2	3.6*	3.1	7.6
-1.5 m	16.2*	15.9	9.8*	7.8	6.9*	4.6			4.7*	3.4	7.1
-3.0 m	16.7*	16.1	9.6*	7.3	4.8*	4.5			4.7*	4.4	6.1
-4.5 m											

Height	Reach						At max reach				
	3.0 m		4.5 m		6.0 m		7.5 m		Max reach		
	Front	360°	Front	360°	Front	360°	Front	360°			
9.0 m											
7.5 m			5.0*	5.0*					3.1*	3.1*	5.1
6.0 m			5.5*	5.5*	4.5*	4.5*			2.7*	2.7*	6.5
4.5 m	8.7*	8.7*	6.3*	6.3*	5.1*	5.1*			2.7*	2.7*	7.3
3.0 m	11.9*	11.9*	7.5*	7.5*	5.6*	5.6*	3.9*	3.9*	2.8*	2.8*	7.7
1.5 m	12.5*	12.5*	9.1*	9.1*	6.3*	6.1	4.3*	4.2	3.1*	3.1*	7.8
0.0 m	15.0*	15.0*	9.6*	9.5	6.8*	6.2	4.0*	4.0	3.6*	3.6*	7.6
-1.5 m	16.2*	16.2*	9.8*	9.7	6.9*	5.9			4.7*	4.4	7.1
-3.0 m	16.7*	16.7*	9.6*	9.6	4.8*	4.5*			4.7*	4.7*	6.1
-4.5 m											

Height	Reach						At max reach				
	3.0 m		4.5 m		6.0 m		7.5 m		Max reach		
	Front	360°	Front	360°	Front	360°	Front	360°			
9.0 m											
7.5 m			4.8*	4.8*					2.5*	2.5*	5.7
6.0 m			5.2*	5.2*	4.5*	4.5*			2.2*	2.2*	7.0
4.5 m			5.7*	5.7*	4.7*	4.7*	3.3*	3.3*	2.2*	2.2*	7.8
3.0 m	12.4*	12.4*	7.0*	7.0*	5.3*	5.0	4.2*	3.4	2.2*	2.2*	8.1
1.5 m	12.2*	12.2*	8.6*	7.6	6.0*	4.9	4.8*	3.3	2.4*	2.4*	8.2
0.0 m	14.2*	14.2*	9.5*	7.7	6.6*	4.9	4.8*	3.2	2.8*	2.8	8.0
-1.5 m	16.0*	15.6	9.6*	7.8	6.8*	4.6			3.5*	3.1	7.5
-3.0 m	16.6*	16.3	10.0*	7.4	6.1*	4.4			4.5*	3.8	6.6
-4.5 m	12.5*	12.5*							9.4*	9.4*	3.6

Height	Reach						At max reach				
	3.0 m		4.5 m		6.0 m		7.5 m		Max reach		
	Front	360°	Front	360°	Front	360°	Front	360°			
9.0 m											
7.5 m			4.8*	4.8*					2.5*	2.5*	5.7
6.0 m			5.2*	5.2*	4.5*	4.5*			2.2*	2.2*	7.0
4.5 m			5.7*	5.7*	4.7*	4.7*	3.3*	3.3*	2.2*	2.2*	7.8
3.0 m	12.4*	12.4*	7.0*	7.0*	5.3*	5.3*	4.2*	4.2*	2.2*	2.2*	8.1
1.5 m	12.2*	12.2*	8.6*	8.6*	6.0*	6.0	4.8*	4.2	2.4*	2.4*	8.2
0.0 m	14.2*	14.2*	9.5*	9.4	6.6*	6.0	4.8*	4.1	2.8*	2.8*	8.0
-1.5 m	16.0*	16.0*	9.6*	9.5	6.8*	5.9			3.5*	3.5*	7.5
-3.0 m	16.6*	16.6*	10.0*	9.7	6.1*	5.8			4.5*	4.5*	6.6
-4.5 m	12.5*	12.5*							9.4*	9.4*	3.6

Height	Reach						At max reach				
	3.0 m		4.5 m		6.0 m		7.5 m		Max reach		
	Front	360°	Front	360°	Front	360°	Front	360°			
9.0 m									2.7*	2.7*	4.3
7.5 m					2.9*	2.9*			2.0*	2.0*	6.3
6.0 m					4.1*	4.1*			1.8*	1.8*	7.5
4.5 m			5.3*	5.3*	4.4*	4.4*	3.5*	3.5	1.7*	1.7*	8.2
3.0 m	10.8*	10.8*	6.6*	6.6*	5.0*	5.0	4.3*	3.4	1.8*	1.8*	8.5
1.5 m	12.0*	12.0*	8.1*	7.6	5.7*	4.9	4.6*	3.4	1.9*	1.9*	8.6
0.0 m	13.5*	13.5*	9.3*	7.5	6.4*	4.9	5.0*	3.2	2.2*	2.2*	8.4
-1.5 m	15.5*	15.4									

WX 185 Series 2

STANDARD EQUIPMENT & OPTIONS

STANDARD EQUIPMENT

- Robust, shielded arc-welded, welded modular chassis in box section design
- Patented disc brakes for jolt-free work
- PowerShift gear box
- Large toolbox under the step
- Latest generation CASE Family III Tier 3 diesel engines, in accordance to European emissions standards
- Direct injection with turbo charger and charge air cooling
- Water-cooled, low-consumption and low-exhaust in accordance to EU directive
- Automatic battery main switch (coupled to ignition key)
- Electronic immobiliser
- Pump Management System
- Electrohydraulic servo control
- Triple-pump-hydraulic system with two service pumps and separate swing pump
- Engine and pump monitoring by power limit control
- 8 selectable power stages
- Automatic power increase in DRIVE stage
- Comfortable Inching control
- Encased ball bearing slew ring with long-life lubrication
- Swing drive with low-wearing disc brake
- Noise-insulated and flexibly mounted cabin in soft design
- Tinted safety glazing all around, full up and over windscreen
- Sun blinds, large roof window, transparent rain protection
- LCD with integrated error diagnosis function
- Steering column incline infinitely variable
- Ergonomic design of arm rests and foot pedals
- Driver air suspension seat individually adjustable for height and incline
- Consoles adjustable for height and length
- 12 V electrical auxiliary supply in cab
- Forward / Reverse shifting on joystick
- Independent control of blade and each stabiliser

- Automatic axle locking system
- Automatic working brake
- Travel and swing hydrostatic braking
- Cab headlights
- Electric diesel filling system
- Powerboost system
- Centralised control of blade and stabilisers on left joysticks on left joystick

OPTIONS

- Air conditioning
- 30 km/h forward speed
- Single or twin tyres
- Dozer blade with hydraulic parallel guidance
- Stabilisers with large, lockable pads for secure grip on uneven ground
- Transport holder for clamshell grab
- Intermediate bearing for prop shaft
- Central greasing nipple on boom
- Cooling box
- Radio
- Additional working lights
- Auxiliary heating
- Front and roof guards
- FOPS protection for cab
- Armoured glass for front window
- Safety load hook on coupler
- Safety valves for hoist mode
- Hydraulic system for hammer, grab, shears

Standard and optional equipment shown can vary by country.

Worldwide Case Construction Equipment Contact Information

EUROPE/AFRICA/MIDDLE EAST:

Centre D'affaires EGB
5, Avenue Georges Bataille - BP 40401
60671 Le Plessis-Belleville - FRANCE

NORTH AMERICA/MEXICO:

700 State Street
Racine, WI 53404 U.S.A.

LATIN AMERICA:

Av. General David Sarnoff 2237
32210 - 900 Contagem - MG
Belo Horizonte BRAZIL

ASIA PACIFIC:

Unit 1 - 1 Foundation Place - Prospect
New South Wales - 2148 AUSTRALIA

CHINA:

No. 29, Industrial Premises, No. 376,
De Bao Road, Waigaoqiao Ftz, Pudong,
SHANGHAI, 200131, P.R.C.

NOTE: Standard and optional fittings can vary according to the demands and specific regulations of each country. The illustrations may include optional rather than standard fittings - consult your Case dealer. Furthermore, CNH reserves the right to modify machine specifications without incurring any obligation relating to such changes.

Case Construction Equipment

CNH UK Ltd.
Armstrong House
The Finningley Estate
Hayfield Lane
Doncaster
DN9 3XA
Fax +44 (0)1302 802126

www.casece.com

CASE
CONSTRUCTION



Conforms to directive 98/37/CE