



# WHEELED EXCAVATORS

# WX240 - Series 2

PRELIMINARY



Engine Horsepower	129 kW - 173 hp
Max Operating weight	22700 kg
Bucket	0.47 m <sup>3</sup> to 1.43 m <sup>3</sup>

P R O F E S S I O N A L P A R T N E R

# NEW GENERATION... NEW

## MAINTENANCE

- Latest generation CASE Family III engine
- Compact upperstructure with catwalk for better service access
- Self diagnosis integrated into the electronic management system
- Longer service intervals (500 hrs oil change interval)
- Easy and simple service point access
- Ecological engine oil drainage cap

## COMFORT

- Air suspension seat
- Fully glazed cab for outstanding all-round visibility
- Full up and over front windscreen
- Automatically operating brake system
- Automatic front axle lock
- Forward/reverse control on joystick
- Dozer blade and stabilisers fine control on joystick
- Simple to select operating modes
- "DIGIPOWER" management control of all hydraulic functions
- Transparent roof
- Tilttable steering column
- Fine grading control mode
- Swing brake modes
- Electric refuel pump
- One key for all locking functions



# DESIGN... CASE CONTINUITY

## PERFORMANCE

---

- Compact upperstructure
- Lifting capacity equivalent to conventional design models
- 25 km/h top speed
- PowerShift gear box, on the move gear shifting
- Superior engine power
- High swing torque
- Best in class tractive effort
- Power Boost
- Hydraulic tool pressure and flow pre-setting
- Hydraulically driven fan with thermostatic regulation
- Full stabiliser and blade independence
- Total chassis versatility
- Independent swing hydraulic circuit
- Mechanically lockable large section stabiliser pads
- Quick couplers for previous WX range buckets
- Quick connectors on hydraulic option circuits

## SAFETY

---

- Unique CASE Inching and extra slow speed
- Integrated anti-theft device
- Engine safe warm up control
- Road travel mode with swing and attachment circuit cut out
- Automatic battery cut off
- Stabiliser cylinder protection



## ENGINE

<b>Make</b>	CASE - Family III
<b>Model</b>	659TA-M2
<b>Type</b>	6 cyl. turbo charged, direct injection, intercooler
<b>Displacement</b>	5.9 l
<b>Bore x stroke</b>	102 x 120 mm
<b>Output power (ISO 14396)</b>	129 kW/173 hp
<b>Rated speed</b>	2000 rpm

The latest generation CASE Family III engines comply with the EU Tier 2 directive.

Modern, quiet, with low fuel consumption and designed for reliability, the CASE engine reduces owning and operating costs. Engine auto idle can be de-activated manually.



## HYDRAULIC CIRCUIT

<b>Main pumps</b>	3 variable displacement, axial piston
<b>Total maximum flow</b>	2 x 215 + 130 l/min
<b>Attachment maximum pressure/Power Boost</b>	350/370 bar
<b>Travel maximum pressure</b>	350 bar
<b>Swing maximum pressure</b>	390 bar

The "DIGIPOWER" hydraulic system monitors the two main pumps, the separated "closed circuit swing pump", and regulates engine power according to demand. It offers 7 selectable power levels (4 digging and 3 lifting), including levelling mode for fine grading operations. Power Boost is automatic in lifting mode and can be activated for 8 seconds in the other modes).

## UNDERCARRIAGE

The CASE WX range features a new PowerShift transmission with a two gear range, and with "on the move" shifting. The maximum travel speed is increased up to 25 km/h, to reduce on road down time.

The typical CASE "Inching" associated with the "creeper" position allows safe and accurate movements, for loading on to a trailer.

Modular frame allows the assembly of all possible chassis configuration, according to customer requests. Either pin-on fitted or welded onto the main structure, the stabiliser beam design is outstandingly rigid.

The stabilisers and blade are fully independent, (front/rear and left/right), controlled by the dipper joystick and easily selectable by switches.

Right hand side spacious tool box under the steps is standard.

<b>Maximum travel speed (field range)</b>	8 km/h
<b>Maximum travel speed (road range)</b>	20 or 25 km/h
<b>Maximum drawbar pull (field range)</b>	130 kN

As on previous range the front axle lock is automatic.



## CAB

The cab has been designed with the operator in mind:

- Spacious and ergonomic environment with tinted safety glass offering outstanding all-round visibility
- Modular total or partial opening windscreen with transparent rain shield
- Large roof window with sunshade
- Fully adjustable air suspension seat
- Steering column with continuously adjustable inclination
- Exceptionally quiet cab
- Easy to operate joystick controls and pedals

Large LCD display integrating the working mode information, auto diagnostic function and working status.

For operator convenience, all the major operating controls are located on the joysticks:

- Forward/reverse/neutral travel
- Attachment/Blade-Stabiliser selection
- Levelling mode
- Power Boost
- Hydraulic options

## NOISE LEVELS

<b>LwA</b>	106 dBA
<b>LpA</b>	77 dBA



## ELECTRICAL CIRCUIT

<b>Voltage output</b>	24 V
<b>Batteries</b>	2 x 12 V - 100 Ah
<b>Alternator</b>	70 A

Automatic isolator switch and 12 V power supply in cab as standard.



## BRAKE SYSTEM

In order to keep the operator focussed on his own work, the travel brake is automatically activated when the pedal is released. The brakes are a multi-disc design for smooth operation.

## TYRES

<b>4 Wheels</b>	18 - 22.5XF
<b>8 Wheels with twinning rings</b>	10.00 - 20

## SWING

The swing function is operated by a hydraulic closed circuit coupled with a mechanical reducer integrating an automatic static brake. The hydro-static swing brake is adjustable with 3 settings.

<b>Swing speed</b>	9.5 rpm
<b>Swing torque</b>	70 kNm

## CAPACITIES

<b>Engine oil</b>	16 l
<b>Cooling circuit</b>	30 l
<b>Fuel tank</b>	325 l
<b>Hydraulic tank</b>	160 l
<b>Swing gear</b>	4 l

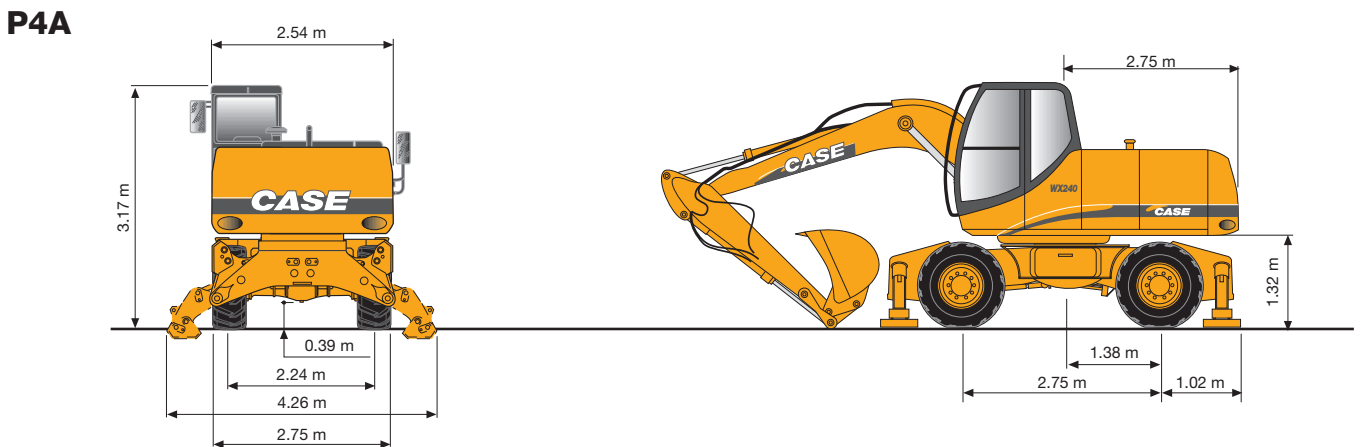
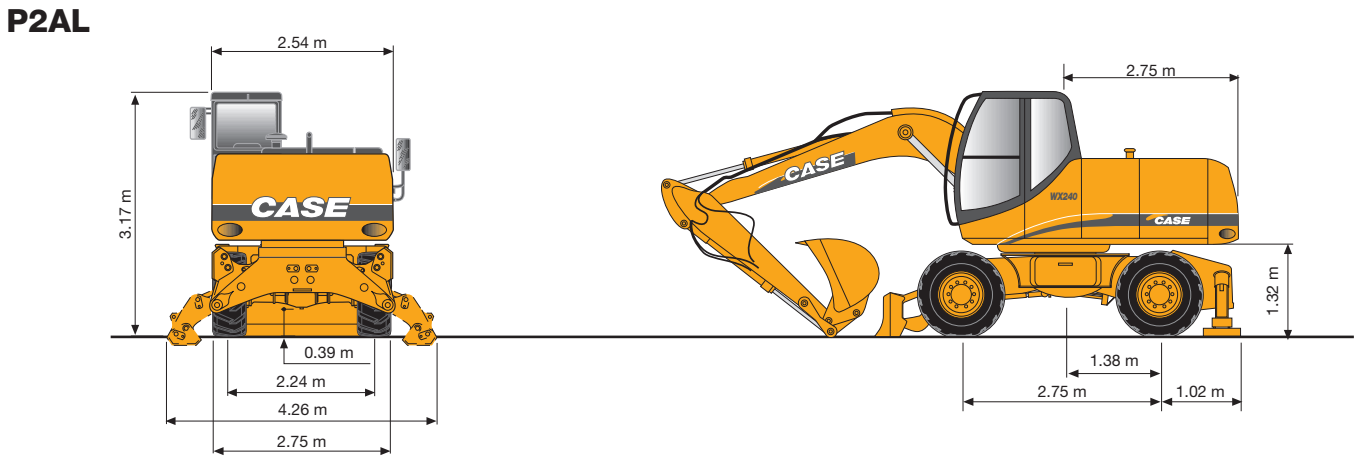
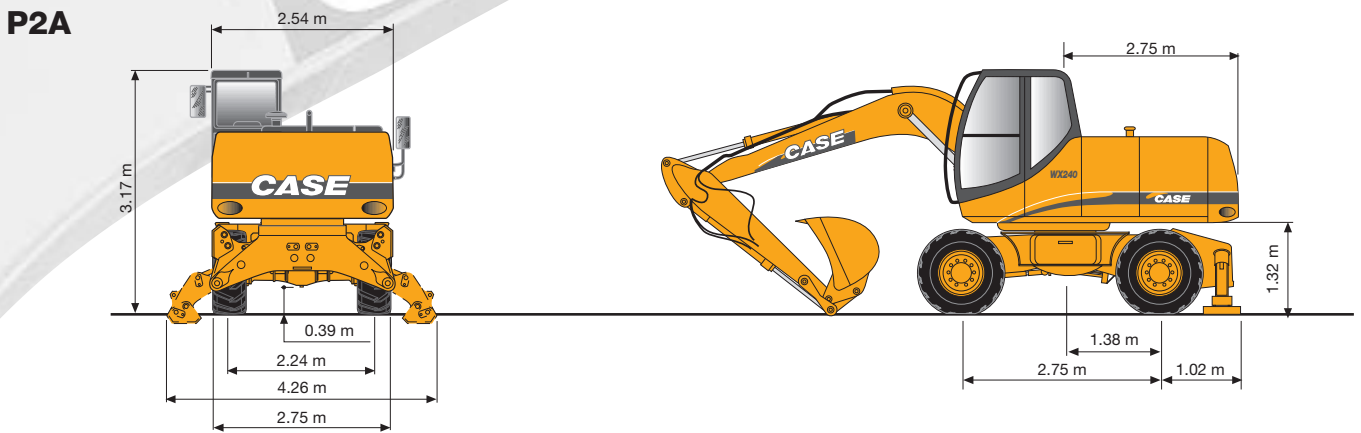
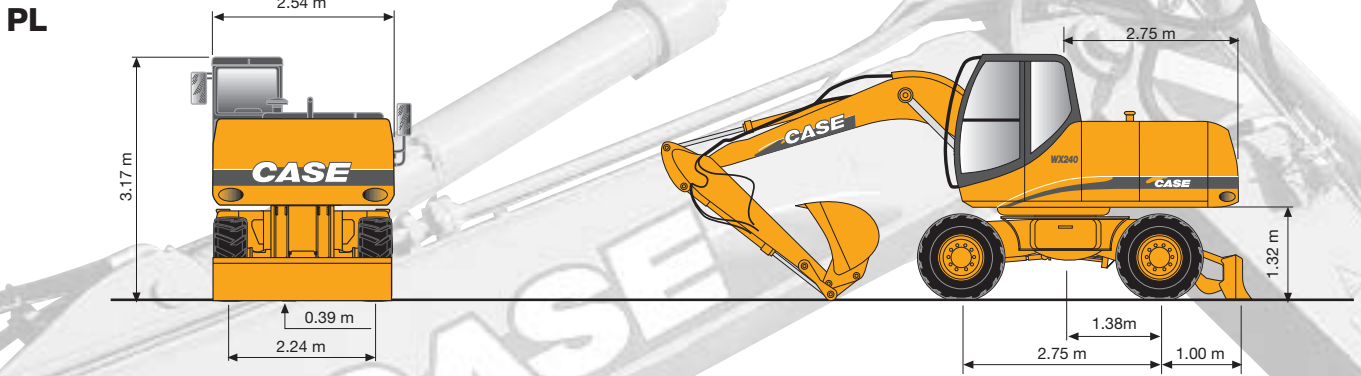
## UPPERSTRUCTURE

The new CASE WX offers as standard a compact upperstructure, integrating a transversal engine position. Even with a reduced tail radius, the service point accessibility is maintained and the catwalk remains the best access location for servicing.

<b>Tail swing radius</b>	2.75 m
--------------------------	--------




# OVERALL DIMENSIONS



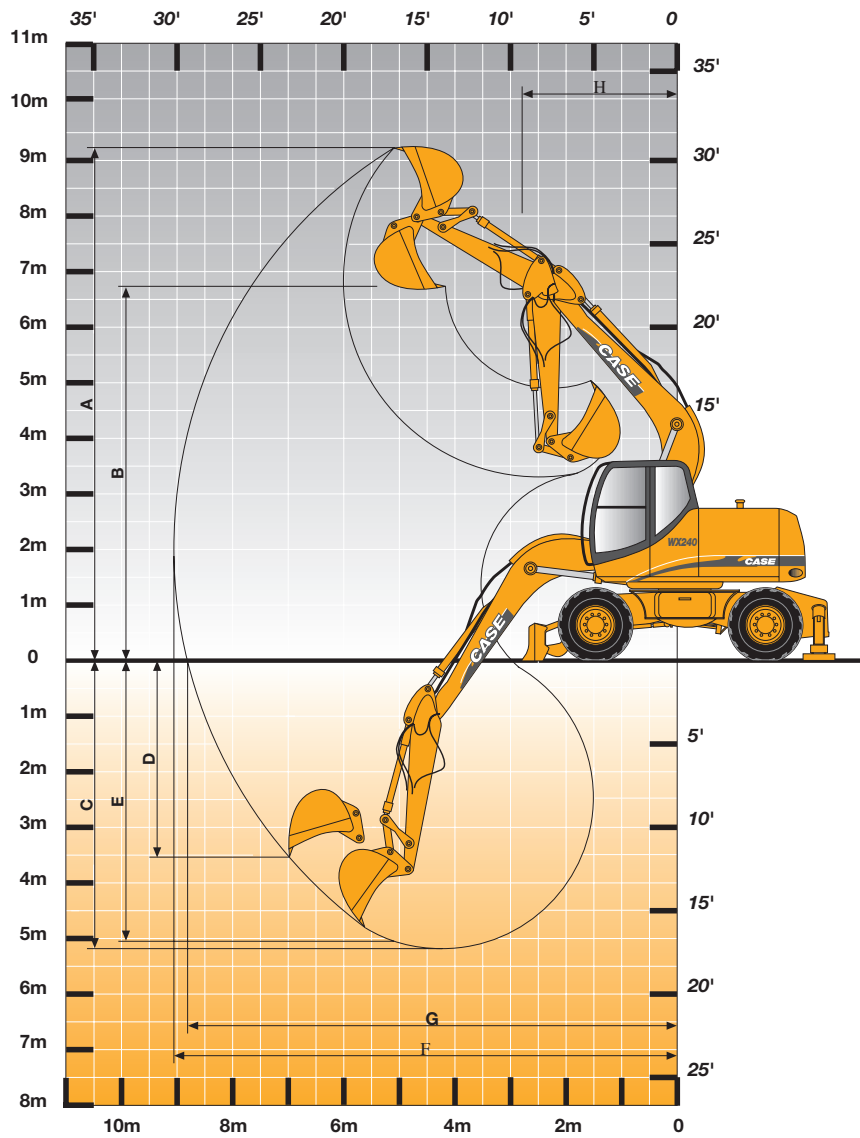
# SHIPPING DIMENSIONS / WEIGHT



	PL			P2A			P2AL			P4A			
	Rear blade			Rear stabilisers			Front blade + 2 stab.			4 stabilisers			
	A	B		A	B		A	B		A	B		
	mm	mm	kg	mm	mm	kg	mm	mm	kg	mm	mm	kg	
<b>MONO BOOM</b>	<b>Dipper 2.30 m</b>	9686	3201	19 980	9685	3219	20 650	9685	3219	21 330	9685	3219	21 740
	<b>Dipper 2.60 m</b>	9681	3183	20 020	9675	3197	20 720	9675	3197	21 420	9675	3197	21 820
	<b>Dipper 2.90 m</b>	9677	3260	20 120	9675	3279	20 820	9675	3279	21 520	9675	3279	21 920
<b>ARTICULATED BOOM</b>	<b>Dipper 2.30 m</b>	9440	3150	20 760	9434	3151	21 430	9434	3151	22 110	9434	3151	22 520
	<b>Dipper 2.60 m</b>	9432	3154	20 800	9434	3155	21 500	9434	3155	22 200	9434	3155	22 600
	<b>Dipper 2.90 m</b>	9415	3210	20 900	9415	3221	21 600	9415	3221	22 300	9415	3221	22 700

Weights are indicated fitted with a 950 kg bucket





## WORKING RANGE

		MONO BOOM 5.60 m			ARTICULATED BOOM 5.50 m		
		DIPPER			DIPPER		
		2.3 m	2.6 m	2.9 m	2.3 m	2.6 m	2.9 m
<b>A Max. digging height</b>	m	10.0	9.9	10.1	10.1	10.2	10.4
<b>B Max. loading height</b>	m	7.2	7.2	7.4	7.3	7.4	7.6
<b>C Max. digging depth</b>	m	5.7	6.0	6.3	5.7	6.0	6.3
<b>D Max. vert. wall digging depth</b>	m	4.2	4.2	4.4	4.2	4.3	4.5
<b>E Max. depth of cut for 8' level bottom</b>	m	5.5	5.8	6.1	5.6	5.9	6.2
<b>F Max. digging reach</b>	m	9.6	9.8	10.1	9.4	9.6	9.9
<b>G Max. digging reach at ground level</b>	m	9.4	9.6	9.9	9.2	9.5	9.7
<b>H Min. front swing radius</b>	m	3.3	3.2	3.2	3.2	3.1	3.2
<b>Bucket breakout force (370 bar)</b>	kN	157	157	157	157	157	157
<b>Stick crowd force (370 bar)</b>	kN	139	129	120	139	129	120

## BUCKETS

### General purpose

Capacity SAE	l	475	640	810	940	1060	1180	1300	1430
Width	mm	600	750	900	1000	1100	1200	1300	1400
Weight	kg	525	560	660	715	725	765	805	840

### Heavy duty

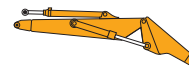
Capacity SAE	l					1060	1180	1300	1430
Width	mm					1100	1200	1300	1400
Weight	kg					820	865	905	950





# LIFTING CAPACITY

## ARTICULATED BOOM



**BASE BOOM:** 2.01 m  
**TOP BOOM:** 3.79 m  
**BUCKET (CECE):** 1.06 m<sup>3</sup>

Height	Reach								At max reach						
	3.0 m		4.5 m		6.0 m		7.5 m		Front	360°	Max reach				
	Front	360°	Front	360°	Front	360°	Front	360°							
9.0 m															
7.5 m									5.1*	4.0	5.9				
6.0 m									4.1*	2.7	7.1				
4.5 m									6.1*	3.9	5.2*	2.4	3.8*	2.1	7.8
3.0 m	14.1*	11.3	9.1*	6.0	7.0*	3.9	5.9	2.4	3.8*	1.8	8.2				
1.5 m	15.9*	10.9	11.5*	5.8	8.1*	3.9	5.8	2.2	4.2*	1.7	8.3				
0.0 m	18.8*	11.1	13.1*	5.8	8.4	3.5	5.6	2.1	4.8	1.7	8.1				
-1.5 m	21.8*	10.4	13.4*	5.4	8.5	3.1	5.4	1.9	5.4	1.9	7.5				
-3.0 m	22.6*	10.1	13.9*	4.9	8.1	2.8			6.7	2.4	6.6				
-4.5 m	19.1*	9.5							11.7*	5.4	4.1				

Height	Reach								At max reach								
	3.0 m		4.5 m		6.0 m		7.5 m		Front	360°	Max reach						
	Front	360°	Front	360°	Front	360°	Front	360°									
9.0 m																	
7.5 m									4.9*	3.9	6.1						
6.0 m									5.3*	4.0	7.3						
4.5 m									7.1*	6.3	5.9*	3.9	5.2*	2.4	3.7*	2.0	8.0
3.0 m	14.5*	11.2	8.7*	6.0	6.7*	3.8	5.7*	2.4	3.7*	1.7	8.4						
1.5 m	16.0*	11.0	11.0*	5.8	7.7*	3.8	5.8	2.3	3.9*	1.6	8.5						
0.0 m	18.3*	11.0	12.4*	5.8	8.3	3.6	5.6	2.1	4.5*	1.6	8.3						
-1.5 m	21.2*	10.4	13.2*	5.4	8.5	3.1	5.4	1.9	5.1	1.7	7.8						
-3.0 m	22.3*	10.1	13.6*	4.9	8.0	2.8			6.2	2.2	6.9						
-4.5 m	20.8*	9.4	11.0*	4.5					9.6*	4.0	4.9						

Height	Reach								At max reach								
	3.0 m		4.5 m		6.0 m		7.5 m		Front	360°	Max reach						
	Front	360°	Front	360°	Front	360°	Front	360°									
9.0 m																	
7.5 m									5.2*	4.0	6.5						
6.0 m									5.1*	4.0	4.2*	2.5	3.5*	2.3	7.7		
4.5 m									6.5*	6.3	5.5*	3.9	5.1*	2.5	3.4*	1.8	8.3
3.0 m	12.8*	11.4	8.3*	6.0	6.3*	3.8	5.5*	2.5	3.4*	1.6	8.7						
1.5 m	15.4*	10.8	10.4*	5.7	7.4*	3.7	5.8	2.3	3.5*	1.5	8.8						
0.0 m	17.8*	10.8	12.4*	5.7	8.2	3.7	5.7	2.1	4.2*	1.4	8.6						
-1.5 m	20.6*	10.4	13.1*	5.4	8.4	3.3	5.4	1.9	4.7	1.6	8.1						
-3.0 m	22.1*	10.0	13.4*	5.0	8.1	2.9			5.6	1.9	7.2						
-4.5 m	22.2*	9.5	12.4*	4.5					8.2*	3.2	5.5						

Height	Reach								At max reach								
	3.0 m		4.5 m		6.0 m		7.5 m		Front	360°	Max reach						
	Front	360°	Front	360°	Front	360°	Front	360°									
9.0 m																	
7.5 m									5.1*	5.1*	5.9						
6.0 m									4.1*	4.1*	7.1						
4.5 m									7.4*	7.4*	6.1*	4.9	5.2*	3.1	3.8*	2.8	7.8
3.0 m	14.1*	14.1*	9.1*	9.1*	7.0*	6.2	6.0*	4.2	3.8*	3.5	8.2						
1.5 m	15.9*	15.9*	11.5*	9.6	8.1*	6.2	6.6*	4.1	4.2*	3.3	8.3						
0.0 m	18.8*	18.3*	13.1*	9.7	9.1*	6.2	6.6	3.9	4.9*	3.4	8.1						
-1.5 m	21.8*	20.6	13.4*	9.8	9.5	5.8	5.7*	3.7	5.7*	3.7	7.5						
-3.0 m	22.6*	21.5	13.9*	9.2	9.1*	5.4			7.1*	4.6	6.6						
-4.5 m	19.1*	19.1*							11.7*	10.5	4.1						

Height	Reach								At max reach								
	3.0 m		4.5 m		6.0 m		7.5 m		Front	360°	Max reach						
	Front	360°	Front	360°	Front	360°	Front	360°									
9.0 m																	
7.5 m									4.9*	4.9*	6.1						
6.0 m									5.3*	5.3*	7.3						
4.5 m									7.1*	7.1*	5.9*	5.9*	5.2*	4.3	3.7*	3.7	8.0
3.0 m	14.5*	14.5*	8.7*	8.7*	6.7*	6.2	5.7*	4.3	3.7*	3.3	8.4						
1.5 m	16.0*	16.0*	11.0*	9.5	7.7*	6.1	6.3*	4.1	3.9*	3.1	8.5						
0.0 m	18.3*	18.3*	12.4*	9.5	8.8*	6.2	6.7	3.9	4.5*	3.2	8.3						
-1.5 m	21.2*	20.4	13.2*	9.8	9.4	5.8	6.4	3.7	5.3*	3.5	7.8						
-3.0 m	22.3*	21.4	13.6*	9.3	9.4*	5.4			6.8*	4.2	6.9						
-4.5 m	20.8*	20.5	11.0*	8.8					9.6*	7.7	4.9						

Height	Reach								At max reach								
	3.0 m		4.5 m		6.0 m		7.5 m		Front	360°	Max reach						
	Front	360°	Front	360°	Front	360°	Front	360°									
9.0 m																	
7.5 m									5.2*	5.2*	6.5						
6.0 m									5.1*	5.1*	4.2*	4.2*	3.5*	3.5*	7.7		
4.5 m									6.5*	6.5*	5.5*	5.5*	5.1*	4.4	3.4*	3.4*	8.3
3.0 m	12.8*	12.8*	8.3*	8.3*	6.3*	6.2	5.5*	4.3	3.4*	3.1	8.7						
1.5 m	15.4*	15.4*	10.4*	9.5	7.4*	6.1	6.0*	4.2	3.5*	2.9	8.8						
0.0 m	17.8*	17.8*	12.4*	9.5	8.5*	6.1	6.6	4.0	4.2*	3.0	8.6						
-1.5 m	20.6*	20.2	13.1*	9.6	9.2*	5.9	6.5	3.7	4.9*	3.2	8.1						
-3.0 m	22.1*	21.0	13.4*	9.4	9.6	5.4			6.2*	3.8	7.2						
-4.5 m	22.2*	20.6	12.4*	8.8					8.2*	6.1	5.5						

Height	Reach								At max reach								
	3.0 m		4.5 m		6.0 m		7.5 m		Front	360°	Max reach						
	Front	360°	Front	360°	Front	360°	Front	360°									
9.0 m																	
7.5 m									5.1*	5.1	5.9						
6.0 m									4.1*	3.5	7.1						
4.5 m									7.4*	7.4*	6.1*	4.9	5.2*	3.1	3.8*	2.8	7.8
3.0 m	14.1*	14.1*	9.1*	9.1*	7.0*	6.2	6.0*	4.2	3.8*	3.5	8.2						
1.5 m	15.9*	14.2	11.5*	7.3	8.0	4.8	5.5	3.0	4.2*	2.3	8.3						
0.0 m	18.8*	14.4	12.9	7.4	8.0	4.6	5.3	2.8	4.6	2.4	8.1						
-1.5 m	21.8*	14.3	13.1	7.1	7.9	4.2	5.1	2.6	5.1	2.6	7.5						
-3.0 m	22.6*	14.0	13.6	6.5	7.6	3.9			6.3	3.2	6.6						
-4.5 m	19.1*	13.3							11.7*	7.3	4.1						

Height	Reach								At max reach								
	3.0 m		4.5 m		6.0 m		7.5 m		Front	360°	Max reach						
	Front	360°	Front	360°	Front	360°	Front	360°									
9.0 m																	
7.5 m									4.9*	4.9	6.1						
6.0 m									5.3*	5.0	7.3						
4.5 m									7.1*	7.1*	5.9*	4.9	5.2*	3.2	3.7*	2.7	8.0
3.0 m	14.5*	14.5*	8.7*	7.4	6.7*	4.8	5.6	3.2	3.7*	2.4	8.4						
1.5 m	16.0*	14.2	11.0*	7.2	7.7*	4.7	5.5	3.0	3.9*	2.2	8.5						
0.0 m	18.3*	14.3	12.8	7.2	7.9	4.6	5.3	2.8	4.3	2.2	8.3						
-1.5 m	21.2*	14.3	13.0	7.1	8.0	4.2	5.1	2.6	4.8	2.4	7.8						
-3.0 m	22.3*	13.9	13.6	6.6	7.5	3.8			5.9	3.0	6.9						
-4.5 m	20.8*	13.2	11.0*	6.2					9.6*	5.4	4.9						

Height	Reach								At max reach								
	3.0 m		4.5 m		6.0 m		7.5 m		Front	360°	Max reach						
	Front	360°	Front	360°	Front	360°	Front	360°									
9.0 m																	
7.5 m									5.2*	5.0	6.5						
6.0 m									5.1*	5.0	4.2*	3.2	3.5*	3.1	7.7		
4.5 m									6.5*	6.5*	5.5*	4.9	5.1*	3.3	3.4*	2.5	8.3
3.0 m	12.8*	12.8*	8.3*	7.5	6.3*	4.8	5.5*	3.2	3.4*	2.2	8.7						
1.5 m	15.4*	14.1	10.4*	7.2	7.4*	4.7	5.5	3.1	3.5*	2.1	8.8						
0.0 m	17.8*	14.1	12.4*	7.2	7.9	4.7	5.4	2.9	4.1	2.1	8.6						
-1.5 m	20.6*	14.4	12.8	7.1	8.1	4.3	5.1	2.6	4.4	2.2	8.1						
-3.0 m	22.1*	13.9	13.3	6.7	7.6	3.9			5.3	2.7	7.2						
-4.5 m	22.2*	13.3	12.4*	6.2					8.2*	4.3	5.5						

Height	Reach								At max reach								
	3.0 m		4.5 m		6.0 m		7.5 m		Front	360°	Max reach						
	Front	360°	Front	360°	Front	360°	Front	360°									
9.0 m																	
7.5 m									5.1*	5.1*	5.9						
6.0 m									4.1*	4.1*	7.1						
4.5 m									7.4*	7.4*	6.1*	4.9	5.2*	3.1	3.8*	2.8	7.8
3.0 m	14.1*	14.1*	9.1*	9.1*	7.0*	6.2	6.0*	4.2	3.8*	3.5	8.2						
1.5 m	15.9*	15.9*	11.5*	11.5*	8.1*	7.8	6.5	5.5	4.2*	4.2*	8.3						
0.0 m	18.8*	18.3*	13.1*	12.5	9.1*	7.9	6.4	5.3	4.9*	4.5	8.1						
-1.5 m	21.8*	21.8*	13.4*	12.8	9.4	7.8	5.7*	5.1	5.7*	5.0	7.5						
-3.0 m	22.6*	22.6*	13.9*	12.9	9.1	7.4			7.1*	6.2	6.6						



# WX240 Series 2

## STANDARD EQUIPMENT & OPTIONS

### STANDARD EQUIPMENT

- Robust, shielded arc-welded, modular chassis in box section design
- Patented disc brakes for jolt-free work
- PowerShift gear box
- Large toolbox under the step
- Latest generation CASE Family III Tier 3 diesel engines, in accordance to European emissions standards
- Direct injection with turbo charger and charge air cooling
- Water-cooled, low-consumption and low-exhaust in accordance to EU directive
- Automatic battery main switch (coupled to ignition key)
- Electronic immobiliser
- Pump Management System
- Electrohydraulic servo control
- Triple-pump-hydraulic system with two service pumps and separate swing pump
- Engine and pump monitoring by power limit control
- 8 selectable power stages
- Automatic power increase in DRIVE stage
- Comfortable Inching control
- Encased ball bearing slew ring with long-life lubrication
- Swing drive with low-wearing disc brake
- Noise-insulated and flexibly mounted cabin in soft design
- Tinted safety glazing all around, full up and over windscreen
- Sun blinds, large roof window, transparent rain protection
- LCD with integrated error diagnosis function
- Steering column incline infinitely variable
- Ergonomic design of arm rests and foot pedals
- Driver air suspension seat individually adjustable for height and incline
- Consoles adjustable for height and length
- 12 V electrical auxiliary supply in cab
- Forward/Reverse shifting on joystick
- Independent control of blade and each stabiliser
- Automatic axle locking system

- Automatic working brake
- Travel and swing hydrostatic braking
- Cab headlights
- Electric diesel filling system
- Power Boost system
- Centralised control of blade and stabilisers on left joystick

### OPTIONS

- Air conditioning
- 25 km/h forward speed
- Single or twin tyres
- Dozer blade with hydraulic parallel guidance
- Transport holder for clamshell grab
- Intermediate bearing for prop shaft
- Central greasing nipple on boom
- Cooling box
- Radio
- Additional working lights
- Auxiliary heating
- Front and roof guards
- FOPS protection for cab
- Armoured glass for front window
- Safety load hook on coupler
- Safety valves for hoist mode
- Hydraulic system for hammer, grab, shears

Standard and optional equipment shown can vary by country.

#### Worldwide Case Construction Equipment Contact Information

**EUROPE/AFRICA/MIDDLE EAST:**  
Centre D'affaires EGB  
5, Avenue Georges Bataille - BP 40401  
60671 Le Plessis-Belleville - FRANCE

**NORTH AMERICA/MEXICO:**  
700 State Street  
Racine, WI 53404 U.S.A.

**LATIN AMERICA:**  
Av. General David Sarnoff 2237  
32210 - 900 Contagem - MG  
Belo Horizonte BRAZIL

**ASIA PACIFIC:**  
Unit 1 - 1 Foundation Place - Prospect  
New South Wales - 2148 AUSTRALIA

**CHINA:**  
No. 29, Industrial Premises, No. 376,  
De Bao Road, Waigaoqiao Ftz, Pudong,  
SHANGHAI, 200131, P.R.C.

**NOTE:** Standard and optional fittings can vary according to the demands and specific regulations of each country. The illustrations may include optional rather than standard fittings - consult your Case dealer. Furthermore, CNH reserves the right to modify machine specifications without incurring any obligation relating to such changes.

#### Case Construction Equipment

CNH UK Ltd.  
Armstrong House  
The Finningley Estate  
Hayfield Lane  
Doncaster  
DN9 3XA  
Fax +44 (0)1302 802126

[www.casece.com](http://www.casece.com)

**CASE**  
CONSTRUCTION



Conforms to directive 98/37/CE