

SPECIFICATIONS

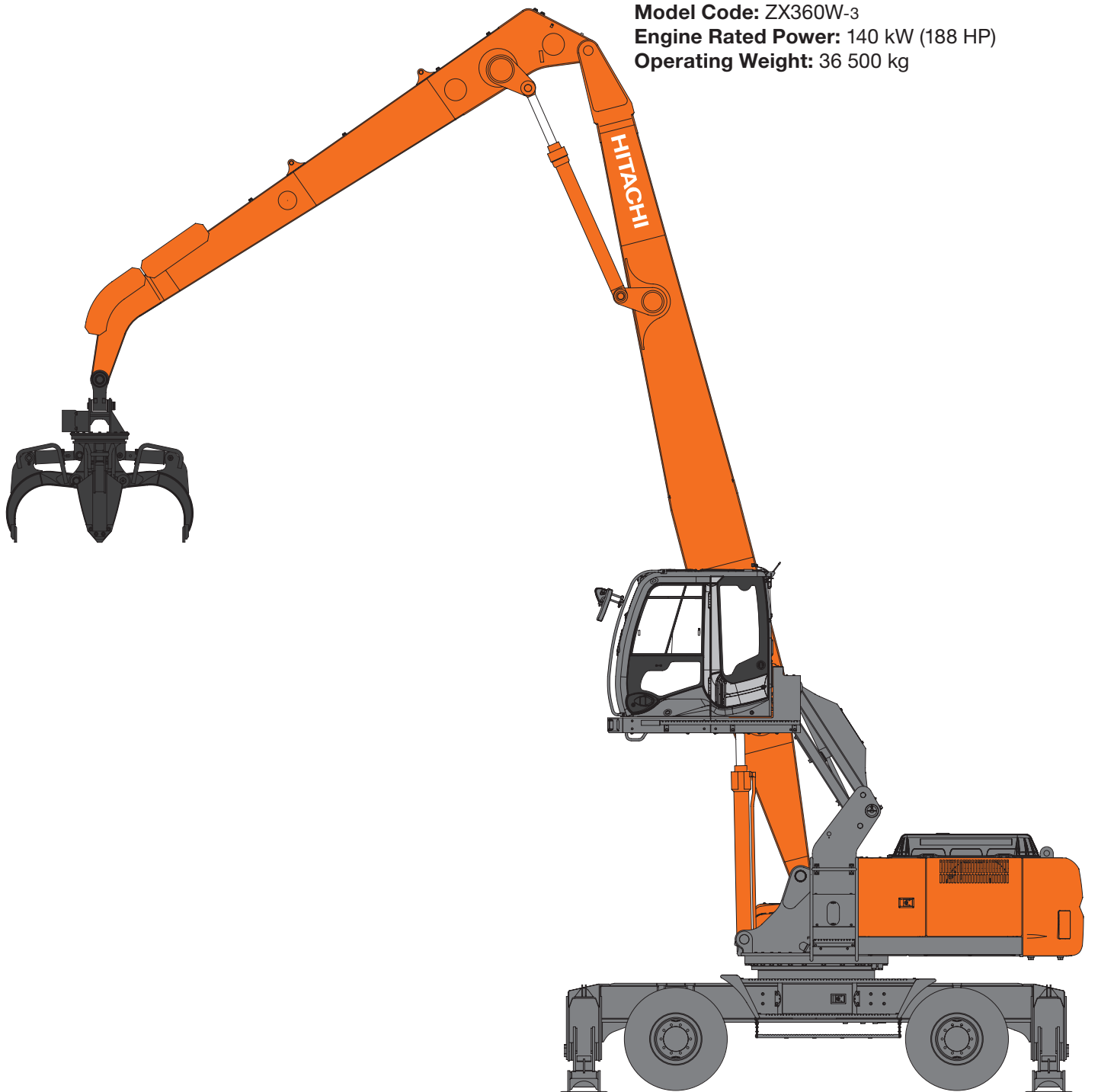
# MATERIAL HANDLING MACHINE

## ZAXIS 250W/360W

### APPLICATION & ATTACHMENT

**Model Code:** ZX250W-3  
**Engine Rated Power:** 122 kW (164 HP)  
**Operating Weight:** 28 000 kg

**Model Code:** ZX360W-3  
**Engine Rated Power:** 140 kW (188 HP)  
**Operating Weight:** 36 500 kg



# SPECIFICATIONS

## ZX250W-3

### ENGINE

Model .....	Isuzu AI-4HK1X
Type .....	4-cycle water-cooled, direct injection
Aspiration .....	Turbocharged, intercooled
No. of cylinders .....	4
Rated power	
ISO 9249, net .....	122 kW (164 HP) at 2 000 min <sup>-1</sup> (rpm)
EEC 80/1269, net ..	122 kW (164 HP) at 2 000 min <sup>-1</sup> (rpm)
SAE J1349, net .....	122 kW (164 HP) at 2 000 min <sup>-1</sup> (rpm)
Maximum torque .....	655 N·m (66.8 kgf·m) at 1 500 min <sup>-1</sup> (rpm)
Piston displacement ..	5.193 L
Bore and stroke .....	115 mm x 125 mm
Batteries .....	2 x 12 V / 88 Ah

### HYDRAULIC SYSTEM

- Work mode selector
    - Digging mode / Attachment mode
  - Engine speed sensing system
- |                     |  |
|---------------------|--|
| Main pumps .....    | 2 variable displacement axial piston pumps |
| Maximum oil flow .. | 189 + 195 L/min                            |
| Pilot pump .....    | 1 gear pump                                |
| Maximum oil flow .. | 27.7 L/min                                 |
| Steering pump ..... | 1 gear pump                                |
| Maximum oil flow .. | 27.7 L/min                                 |

### Hydraulic Motors

Travel .....	1 variable displacement axial piston motor
Swing .....	1 axial piston motor

### Relief Valve Settings

Implement circuit .....	34.3 MPa (350 kgf/cm <sup>2</sup> )
Swing circuit .....	28.9 MPa (295 kgf/cm <sup>2</sup> )
Travel circuit .....	34.3 MPa (350 kgf/cm <sup>2</sup> )
Pilot circuit .....	3.9 MPa (40 kgf/cm <sup>2</sup> )

### Hydraulic Cylinders

High-strength piston rods and tubes. Cylinder cushion mechanisms provided in boom and arm cylinders to absorb shock at stroke ends.

### Hydraulic Filters

Hydraulic circuits use high-quality hydraulic filters. A suction filter is incorporated in the suction line, and full-flow filters in the return line and swing/travel motor drain lines.

### CONTROLS

Pilot controls. Hitachi's original quick warm-up systems built-in pilot Hydraulic warm-up control systems for engine and hydraulic oil.

Implement levers .....	2
Travel pedal .....	1
Outrigger lever .....	1
Att Pedal (Optional) .....	1

### UPPERSTRUCTURE

#### Revolving Frame

Welded sturdy box construction, using heavy-gauge steel plates for ruggedness. D-section frame for resistance to deformation.

#### Swing Device

Axial piston motor with planetary reduction gear is bathed in oil. Swing circle is single-row, shear-type ball bearing with induction-hardened internal gear. Internal gear and pinion gear are immersed in lubricant. Swing parking brake is spring-set/hydraulic-released disc type.

Swing speed .....	3.7 min <sup>-1</sup> (rpm)
-------------------	-----------------------------

#### Operator's Cab

Independent spacious cab, 1 005 mm wide by 1 675 mm high, conforming to ISO\* Standards. Reinforced glass windows on 4 sides for visibility. Front windows (upper and lower) can be opened. Reclining seat with armrests; adjustable with or without control levers.

\* International Standardization Organization

### UNDERCARRIAGE

Wheeled type undercarriage. The frame is of welded, stress-relieved structure.

#### Drive system:

2 speed power shift transmission and variable displacement axial piston type travel motor.

Travel speed (forward and reverse)

Creeper speed range .....	0 to 2.8 km/h
Low speed range .....	0 to 5.5 km/h
High speed range .....	0 to 20.0 km/h
Gradeability .....	47% (25 degree)
Min. turning radius .....	7.2 m

#### Axle:

All-wheel drive

The front axle can be locked hydraulically in any position.

Oscillating front axle .....

± 7°

#### Brakes system:

Maintenance free wet-disc brakes on axle are standard.

Fully hydraulic service brake system.

#### Tire size:

Pneumatic type: 11.00 - 20

Solid type: 10.00 - 20

## WEIGHTS AND GROUND PRESSURE

### ZX250W-3:

Equipped with 7.50 m boom, 5.50 m arm and pneumatic tires.

(Without attachment)

Operating weight: 28 000 kg

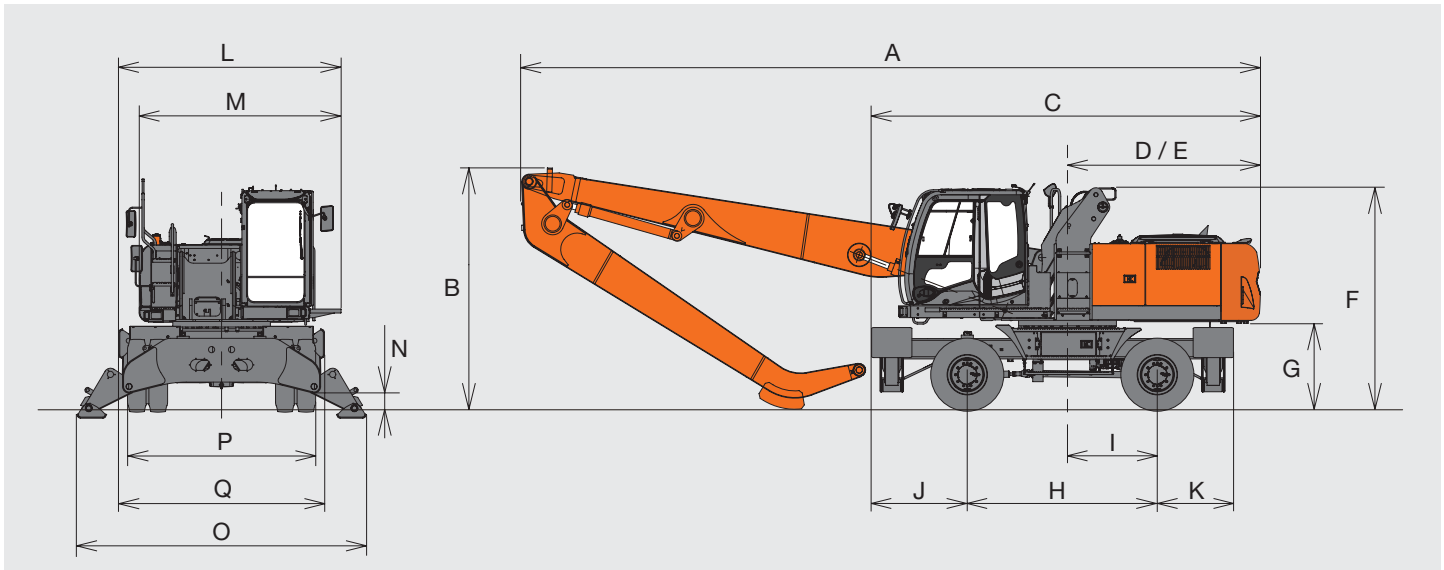
## SERVICE REFILL CAPACITIES

Fuel tank .....	355.0 L
Engine coolant .....	26.0 L
Engine oil .....	23.0 L
Swing device .....	11.7 L
Transmission .....	2.5 L
Front differential gear .....	9.6 L
Rear differential gear .....	13.1 L
Hub reduction gear	
Front axle .....	2 x 2.5 L
Rear axle .....	2 x 2.5 L
Hydraulic tank .....	130.0 L

# DIMENSIONS

## ZX250W-3

### STANDARD CAB

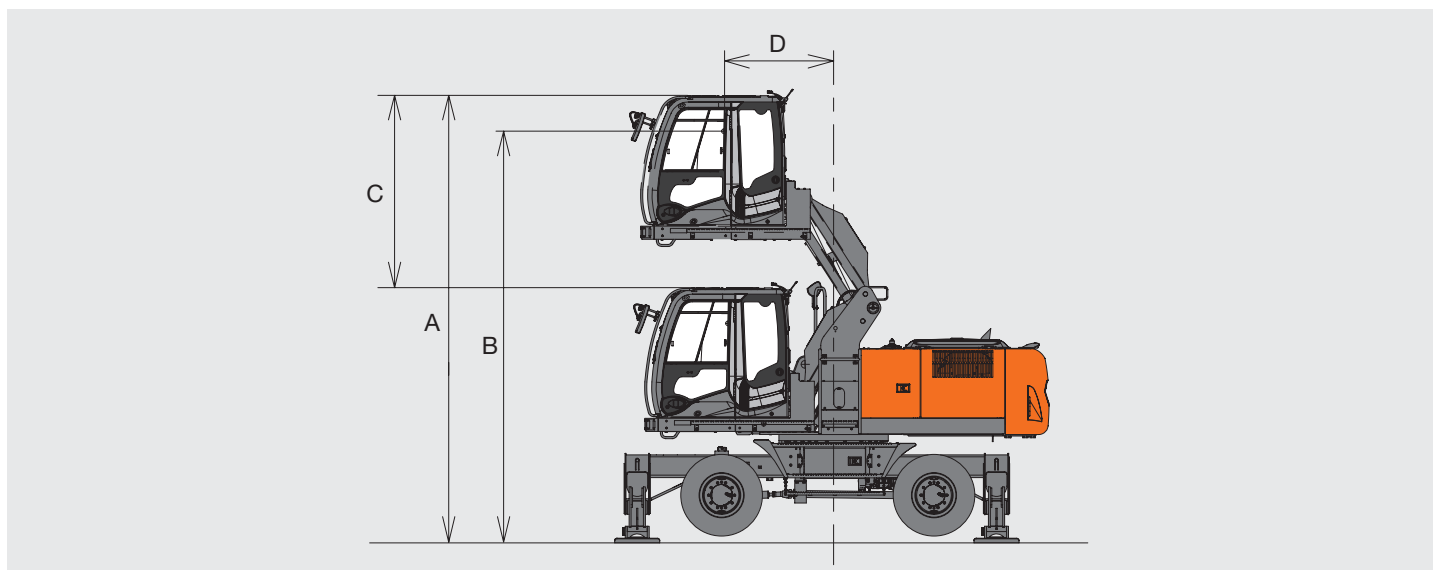


Unit: mm

	ZX250W-3
A Overall length	10 770
B Overall height of boom	3 660
C Overall length of base machine	5 630
D Rear-end swing radius	2 800
E Rear-end length	2 800
F Overall height of base machine	3 200
G Counterweight clearance	1 240
H Wheel base	2 750
I Swing-center to rear axle	1 300
J Front axle to front of chassis	1 380
K Rear axle to rear of chassis	1 110
L Overall width	3 230
M Overall width of upperstructure	2 930
N Min. ground clearance	240
O Outrigger spread	4 210
P Overall width tire	2 730
Q Overall width of O/R retract	2 990

# DIMENSIONS of CAB

## LINKAGE CAB



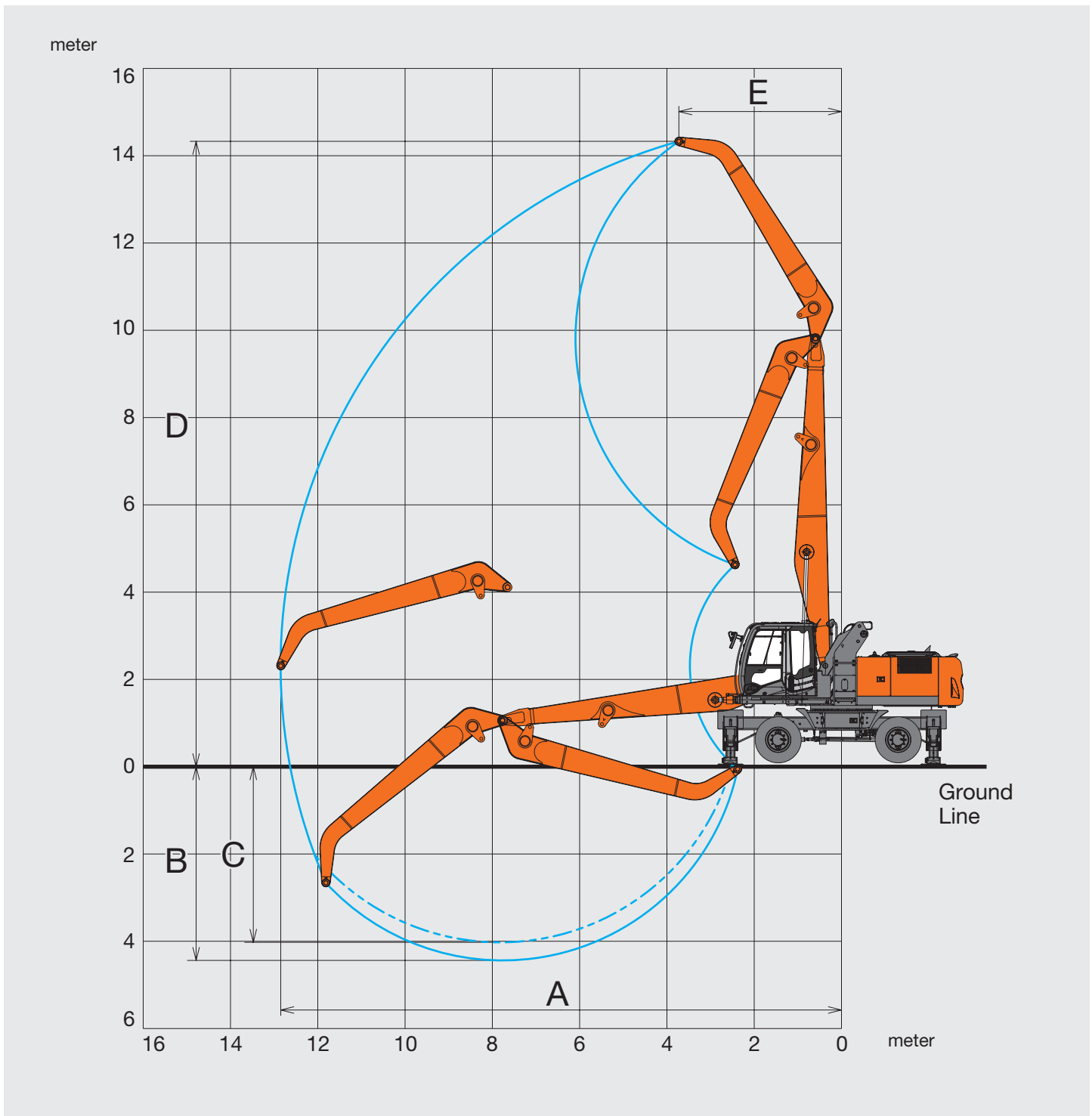
Unit: mm

	ZX250W-3
A Overall height of cab	3 290 to 5 790
B Operator's view point	2 830 to 5 330
C Lift height of cab	2 500
D Operator's view between swing center	1 370 to 1 420

# WORKING RANGES

ZX250W-3

## WORKING RANGES



Unit: mm

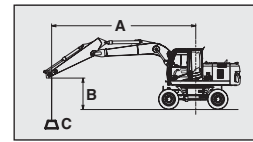
	ZX250W-3
A Max. working reach	12 850
B Max. working depth	4 440
C Max. working depth (all directions)	4 020
D Max. working height	14 330
E Min. swing radius	3 730

The front attachment may come in contact with the undercarriage depending on the front attachment operation position.

# LIFTING CAPACITIES

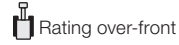
## Metric measure

- Notes: 1. Ratings are based on ISO 10567.  
 2. Lifting capacity of the ZAXIS Series does not exceed 75% of tipping load with the machine on firm, level ground or 87% full hydraulic capacity.  
 3. The load point is the center-line of the bucket pivot mounting pin on the arm.  
 4. \*Indicates load limited by hydraulic capacity.  
 5. 0 m = Ground.



A: Load radius  
 B: Load point height  
 C: Lifting capacity

### ZX250W-3



Unit: 1 000 kg

Conditions	Load point height	Load radius										At max. reach			
		4 m		6 m		8 m		10 m		12 m		meter			
Boom: 7.50 m Arm: 5.50 m Counterweight: 6 250 kg	14.0 m	4 outrigger down	*6.8	*6.8									*6.0	*6.0	4.7
		4 outrigger up	*6.8	*6.8									*6.0	*6.0	
	13.0 m	4 outrigger down			*5.8	*5.8							*4.8	*4.8	6.8
		4 outrigger up			*5.8	*5.8							*4.8	4.6	
	12.0 m	4 outrigger down			*6.4	*6.4	*4.6	*4.6					*4.3	*4.3	8.2
		4 outrigger up			*6.4	6.0	4.6	3.6					*4.3	3.4	
	11.0 m	4 outrigger down			*6.3	*6.3	*5.6	*5.6					*4.0	*4.0	9.3
		4 outrigger up			*6.3	6.1	4.7	3.7					3.6	2.8	
	10.0 m	4 outrigger down					*5.5	*5.5	*4.2	*4.2			*3.8	*3.8	10.2
		4 outrigger up					4.8	3.8	3.2	2.4			3.1	2.3	
	9.0 m	4 outrigger down					*5.4	*5.4	*5.0	*5.0			*3.7	*3.7	10.9
		4 outrigger up					4.8	3.8	3.2	2.5			2.7	2.1	
	8.0 m	4 outrigger down			*6.3	*6.3	*5.5	*5.5	*4.9	*4.9			*3.5	*3.5	11.5
		4 outrigger up			*6.3	6.0	4.7	3.7	3.2	2.5			2.5	1.8	
	7.0 m	4 outrigger down			*6.6	*6.6	*5.6	*5.6	*5.0	4.9			*3.7	*3.7	11.9
		4 outrigger up			*6.6	5.8	4.6	3.6	3.2	2.4			2.3	1.7	
	6.0 m	4 outrigger down			*7.0	*7.0	*5.8	*5.8	*5.1	4.9	4.1	3.6	*3.5	3.4	12.3
		4 outrigger up			*7.0	5.6	4.5	3.5	3.1	2.4	2.3	1.7	2.1	1.6	
	5.0 m	4 outrigger down	*7.9	*7.9	*7.6	*7.6	*6.1	*6.1	*5.2	4.8	4.1	3.6	*3.5	3.3	12.6
		4 outrigger up	*7.9	*7.9	6.9	5.4	4.4	3.4	3.1	2.3	2.2	1.6	2.0	1.5	
	4.0 m	4 outrigger down	*12.0	*12.0	*8.2	*8.2	*6.4	*6.4	*5.3	4.7	4.1	3.5	3.7	3.2	12.7
		4 outrigger up	*12.0	9.2	6.5	5.0	4.2	3.2	3.0	2.2	2.2	1.6	2.0	1.4	
	3.0 m	4 outrigger down	*12.5	*12.5	*8.8	*8.8	*6.6	6.5	5.3	4.6	4.0	3.5	3.7	3.2	12.8
		4 outrigger up	11.2	8.3	6.2	4.7	4.1	3.1	2.9	2.2	2.2	1.6	1.9	1.4	
	2.0 m	4 outrigger down	*2.2	*2.2	*9.3	*9.3	*6.9	6.3	5.2	4.5	4.0	3.5	3.6	3.1	12.8
		4 outrigger up	*2.2	*2.2	5.8	4.4	3.9	2.9	2.8	2.1	2.1	1.5	1.9	1.4	
	1.0 m	4 outrigger down	*1.4	*1.4	*9.6	9.4	*7.0	6.2	5.2	4.5	4.0	3.4	3.6	3.1	12.8
		4 outrigger up	*1.4	*1.4	5.6	4.1	3.8	2.8	2.7	2.0	2.1	1.5	1.9	1.4	
0 (Ground)	4 outrigger down	*1.5	*1.5	*8.6	*8.6	7.0	6.0	5.1	4.4	3.9	3.4	3.7	3.2	12.6	
	4 outrigger up	*1.5	*1.5	5.4	3.9	3.7	2.7	2.7	1.9	2.1	1.5	1.9	1.4		
-1.0 m	4 outrigger down	*1.7	*1.7	*6.6	*6.6	6.9	5.9	5.0	4.3	3.9	3.4	*3.7	3.2	12.4	
	4 outrigger up	*1.7	*1.7	5.2	3.8	3.6	2.6	2.6	1.9	2.1	1.5	2.0	1.4		
-2.0 m	4 outrigger down	*2.0	*2.0	*6.0	*6.0	*6.7	5.9	5.0	4.3	*3.7	3.4	*3.6	3.4	12.1	
	4 outrigger up	*2.0	*2.0	5.2	3.7	3.5	2.5	2.6	1.9	2.1	1.5	2.0	1.5		
-3.0 m	4 outrigger down	*2.4	*2.4	*6.1	*6.1	*6.3	5.9	*4.7	4.3			*3.6	*3.6	11.5	
	4 outrigger up	*2.4	*2.4	5.2	3.7	3.5	2.5	2.6	1.9			2.2	1.6		
-4.0 m	4 outrigger down			*6.5	*6.5	*5.7	*5.7					*4.2	*4.2	9.9	
	4 outrigger up			5.2	3.7	3.5	2.5					2.7	1.9		

# SPECIFICATIONS

## ZX360W-3

### ENGINE

Model .....	Isuzu AH-4HK1X
Type .....	4-cycle water-cooled, direct injection
Aspiration .....	Turbocharged, intercooled
No. of cylinders .....	4
Rated power	
ISO 9249, net .....	140 kW (188 HP) at 2 100 min <sup>-1</sup> (rpm)
EEC 80/1269, net ..	140 kW (188 HP) at 2 100 min <sup>-1</sup> (rpm)
SAE J1349, net .....	140 kW (188 HP) at 2 100 min <sup>-1</sup> (rpm)
Maximum torque .....	676 N·m (69 kgf·m) at 1 500 min <sup>-1</sup> (rpm)
Piston displacement ..	5.193 L
Bore and stroke .....	115 mm x 125 mm
Batteries .....	2 x 12 V / 88 Ah

### HYDRAULIC SYSTEM

- Work mode selector
    - Digging mode / Attachment mode
  - Engine speed sensing system
- |                     |  |
|---------------------|--|
| Main pumps .....    | 2 variable displacement axial piston pumps |
| Maximum oil flow .. | 2 x 236 L/min                              |
| Pilot pump .....    | 1 gear pump                                |
| Maximum oil flow .. | 35 L/min                                   |
| Steering pump ..... | 1 gear pump                                |
| Maximum oil flow .. | 56 L/min                                   |

### Hydraulic Motors

Travel .....	2 variable displacement axial piston motors
Swing .....	1 axial piston motor

### Relief Valve Settings

Implement circuit .....	34.3 MPa (350 kgf/cm <sup>2</sup> )
Swing circuit .....	32.4 MPa (300 kgf/cm <sup>2</sup> )
Travel circuit .....	34.3 MPa (350 kgf/cm <sup>2</sup> )
Pilot circuit .....	3.9 MPa (40 kgf/cm <sup>2</sup> )

### Hydraulic Cylinders

High-strength piston rods and tubes. Cylinder cushion mechanisms provided in boom and arm cylinders to absorb shock at stroke ends.

### Hydraulic Filters

Hydraulic circuits use high-quality hydraulic filters. A suction filter is incorporated in the suction line, and full-flow filters in the return line and swing/travel motor drain lines.

### CONTROLS

Pilot controls. Hitachi's original quick warm-up systems built-in pilot Hydraulic warm-up control systems for engine and hydraulic oil.

Implement levers .....	2
Travel pedal .....	1
Outrigger lever .....	1
Att Pedal (Optional) .....	1

### UPPERSTRUCTURE

#### Revolving Frame

Welded sturdy box construction, using heavy-gauge steel plates for ruggedness. D-section frame for resistance to deformation.

#### Swing Device

Axial piston motor with planetary reduction gear is bathed in oil. Swing circle is single-row, shear-type ball bearing with induction-hardened internal gear. Internal gear and pinion gear are immersed in lubricant. Swing parking brake is spring-set/hydraulic-released disc type.

Swing speed .....	3.7 min <sup>-1</sup> (rpm)
-------------------	-----------------------------

#### Operator's Cab

Independent spacious cab, 1 005 mm wide by 1 675 mm high, conforming to ISO\* Standards. Reinforced glass windows on 4 sides for visibility. Front windows (upper and lower) can be opened. Reclining seat with armrests; adjustable with or without control levers.

\* International Standardization Organization

### UNDERCARRIAGE

Wheeled type undercarriage. The frame is of welded, stress-relieved structure.

#### Drive system:

2 speed power shift transmission and variable displacement axial piston type travel motor.

Travel speed (forward and reverse)	
Low speed range .....	0 to 3.4 km/h
High speed range .....	0 to 14.0 km/h
Gradeability .....	32% (18 degree)
Min. turning radius .....	8.9 m

#### Axle:

- All-wheel drive
- The front axle can be locked hydraulically in any position.
- Oscillating front axle .....
- ± 7°

#### Brakes system:

- Maintenance free wet-disc brakes on axle are standard.
- Fully hydraulic service brake system.

#### Tire size:

- Pneumatic type: 12.00 - 20



## WEIGHTS AND GROUND PRESSURE

### ZX360W-3:

Equipped with 9.70 m boom, 6.70 m arm and pneumatic tires.

(Without attachment)

Operating weight: 36 500 kg

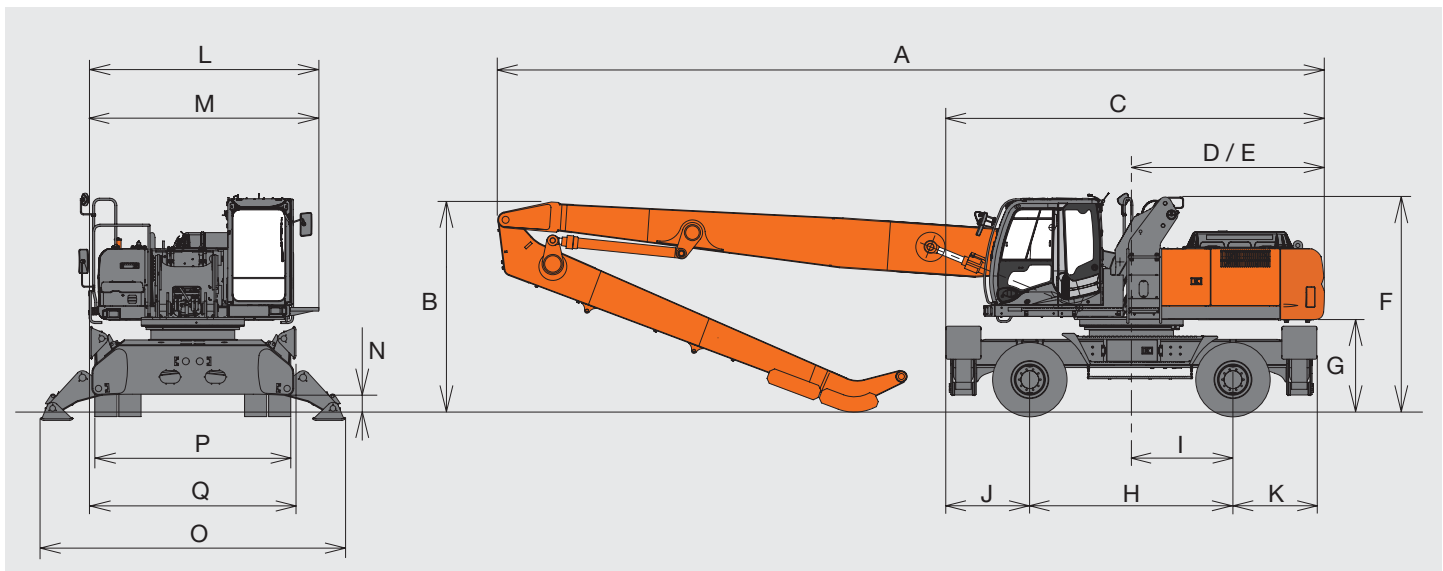
## SERVICE REFILL CAPACITIES

Fuel tank .....	500.0 L
Engine coolant .....	26.0 L
Engine oil .....	23.0 L
Swing device .....	17.0 L
Transmission .....	2.5 L
Front differential gear .....	29.0 L
Rear differential gear .....	22.0 L
Hub reduction gear	
Front axle .....	2 x 4.5 L
Rear axle .....	2 x 3.5 L
Hydraulic tank .....	180.0 L

# DIMENSIONS

## ZX360W-3

### STANDARD CAB

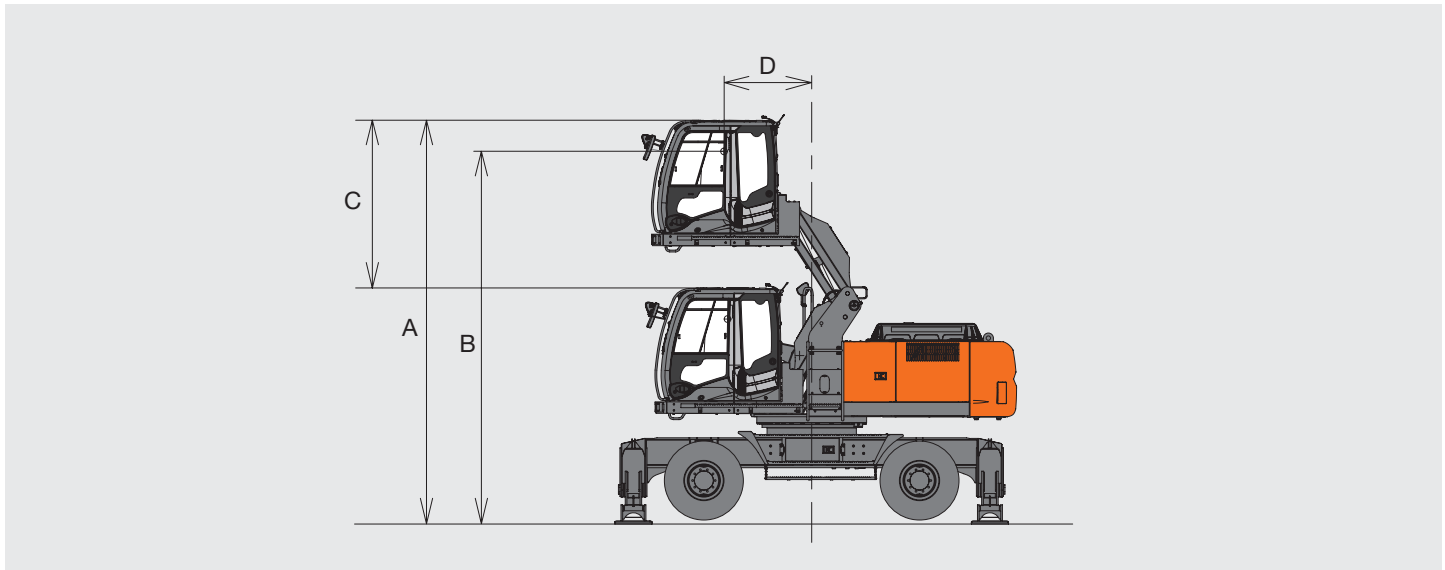


Unit: mm

	ZX360W-3
A Overall length	13 120
B Overall height of boom	3 380
C Overall length of base machine	5 960
D Rear-end swing radius	3 070
E Rear-end length	3 040
F Overall height of base machine	3 390
G Counterweight clearance	1 410
H Wheel base	3 200
I Swing-center to rear axle	1 600
J Front axle to front of chassis	1 320
K Rear axle to rear of chassis	1 320
L Overall width	3 640
M Overall width of upperstructure	3 640
N Min. ground clearance	260
O Outrigger spread	4 820
P Overall width tire	3 100
Q Overall width of O/R retract	3 260

# DIMENSIONS of CAB

## LINKAGE CAB



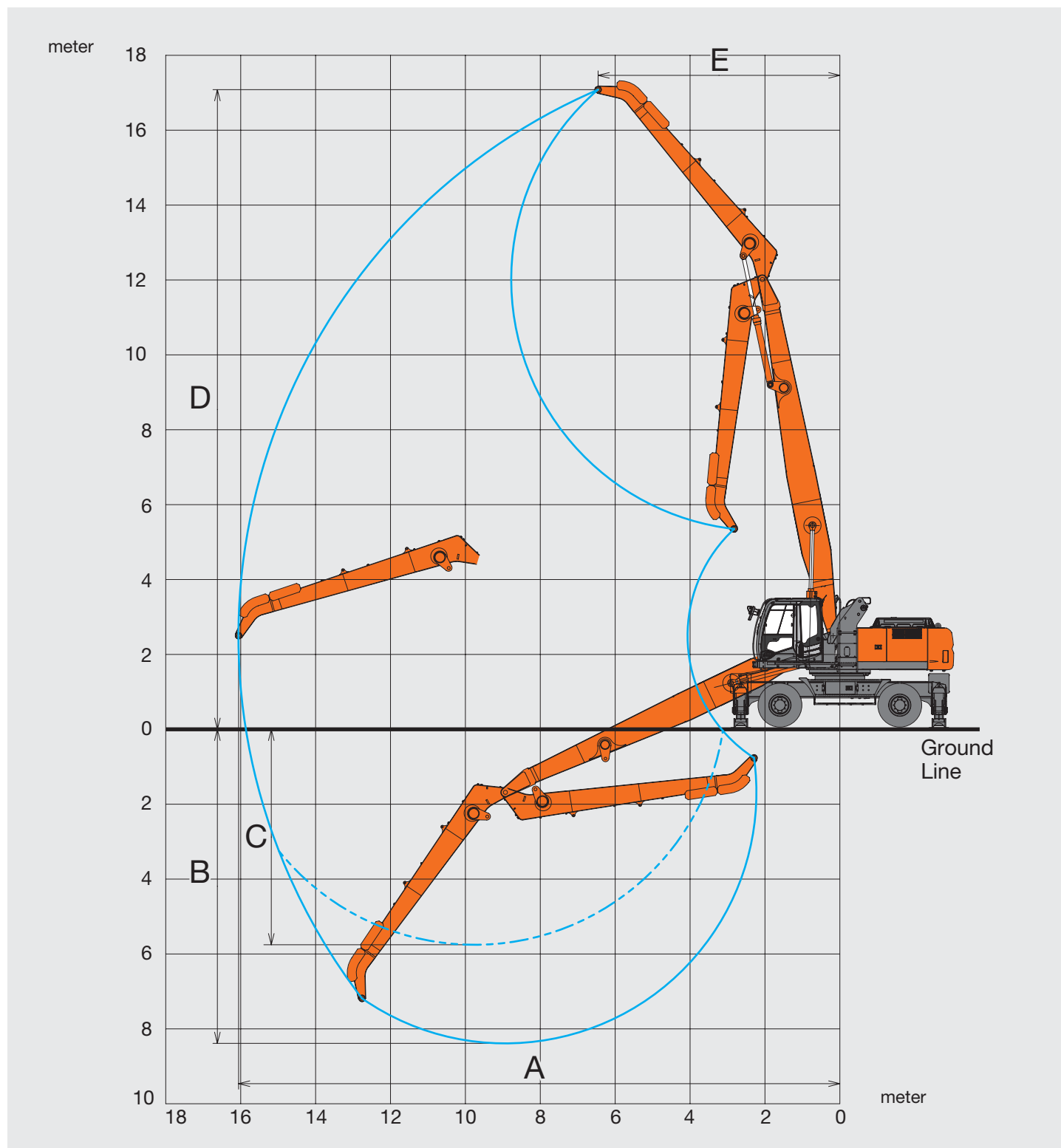
Unit: mm

	ZX360W-3
A Overall height of cab	3 490 to 5 990
B Operator's view point	3 030 to 5 530
C Lift height of cab	2 500
D Operator's view between swing center	1 250 to 1 300

# WORKING RANGES

ZX360W-3

## WORKING RANGES



Unit: mm

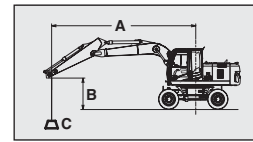
	ZX360W-3
A Max. working reach	16 050
B Max. working depth	8 380
C Max. working depth (all directions)	5 750
D Max. working height	17 080
E Min. swing radius	6 460

The front attachment may come in contact with the undercarriage depending on the front attachment operation position.

# LIFTING CAPACITIES

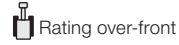
## Metric measure

- Notes: 1. Ratings are based on ISO 10567.  
 2. Lifting capacity of the ZAXIS Series does not exceed 75% of tipping load with the machine on firm, level ground or 87% full hydraulic capacity.  
 3. The load point is the center-line of the bucket pivot mounting pin on the arm.  
 4. \*Indicates load limited by hydraulic capacity.  
 5. 0 m = Ground.



A: Load radius  
 B: Load point height  
 C: Lifting capacity

### ZX360W-3



Unit: 1 000 kg

Conditions	Load point height		Load radius														At max. reach				
			4 m		6 m		8 m		10 m		12 m		14 m		16 m		meter				
			Rating over-front	Rating over-side or 360 degrees	Rating over-front	Rating over-side or 360 degrees	Rating over-front	Rating over-side or 360 degrees	Rating over-front	Rating over-side or 360 degrees	Rating over-front	Rating over-side or 360 degrees	Rating over-front	Rating over-side or 360 degrees							
Boom: 9.70 m Arm: 6.70 m Counterweight: 6 600 kg	16.0 m	4 outrigger down					*6.7	*6.7									*5.8	*5.8	8.5		
		4 outrigger up					*6.7	5.5									*5.8	4.9			
	15.0 m	4 outrigger down																*5.2	*5.2	10.0	
		4 outrigger up																*5.2	3.7		
	14.0 m	4 outrigger down									*5.9	*5.9						*5.0	*5.0	11.1	
		4 outrigger up									5.4	3.9						4.4	3.0		
	13.0 m	4 outrigger down									*5.7	*5.7	*4.9	*4.9				*4.6	*4.6	12.1	
		4 outrigger up									5.5	3.9	3.8	2.6				3.7	2.5		
	12.0 m	4 outrigger down									*5.7	*5.7	*5.2	*5.2				*4.5	*4.5	12.9	
		4 outrigger up									5.5	4.0	3.9	2.7				3.3	2.2		
	11.0 m	4 outrigger down									*5.7	*5.7	*5.1	*5.1				*4.3	*4.3	13.6	
		4 outrigger up									5.5	4.0	3.9	2.7				3.0	1.9		
	10.0 m	4 outrigger down									*5.7	*5.7	*5.1	*5.1	*4.6	4.2		*4.2	4.1	14.2	
		4 outrigger up									5.4	3.9	3.9	2.7	2.8	1.8		2.7	1.7		
	9.0 m	4 outrigger down									*5.8	*5.8	*5.2	*5.2	*4.6	4.2		*4.1	3.8	14.7	
		4 outrigger up									5.3	3.8	3.8	2.6	2.8	1.8		2.5	1.6		
	8.0 m	4 outrigger down							*6.9	*6.9	*5.9	*5.9	*5.2	*5.2	*4.6	4.2		*4.1	3.6	15.1	
		4 outrigger up							*6.9	5.5	5.2	3.7	3.8	2.6	2.8	1.8		2.4	1.5		
	7.0 m	4 outrigger down							*7.2	*7.2	*6.1	*6.1	*5.3	*5.3	*4.6	4.1		*4.2	3.4	15.4	
		4 outrigger up							*7.2	5.3	5.1	3.6	3.7	2.5	2.7	1.8		2.2	1.4		
	6.0 m	4 outrigger down									*9.6	*9.6	*7.5	*7.5	*6.2	*6.2	*5.4	5.3	*4.7	4.1	15.7
		4 outrigger up									*9.6	7.9	7.1	5.0	4.9	3.4	3.6	2.4	2.7	1.7	
	5.0 m	4 outrigger down	*15.4	*15.4	*10.3	*10.3	*7.9	*7.9	*6.4	*6.4	*5.4	5.2	*4.7	4.0				*4.0	3.2	15.9	
		4 outrigger up	*15.4	13.4	*10.3	7.3	6.7	4.7	4.7	3.2	3.5	2.3	2.6	1.7				2.1	1.2		
	4.0 m	4 outrigger down	*4.1	*4.1	*11.0	*11.0	*8.2	*8.2	*6.6	*6.6	*5.5	5.1	*4.7	4.0				*3.9	3.1	16.0	
		4 outrigger up	*4.1		9.8	6.6	6.4	4.3	4.5	3.0	3.4	2.2	2.6	1.6				2.0	1.6		
	3.0 m	4 outrigger down			*11.5	*11.5	*8.4	*8.4	*6.7	6.6	*5.5	5.0	*4.7	3.9	*3.9	3.1		*3.9	3.1	16.0	
		4 outrigger up			9.0	5.9	6.0	4.0	4.3	2.9	3.2	2.1	2.5	1.5	1.9	1.1		2.0	1.1		
	2.0 m	4 outrigger down			*7.2	*7.2	*8.6	*8.6	*6.8	6.4	*5.6	4.8	*4.7	3.8	*3.8	3.1		*3.8	3.1	16.0	
		4 outrigger up			*7.2	5.4	5.7	3.7	4.1	2.7	3.1	2.0	2.4	1.5	1.9	1.1		2.0	1.1		
	1.0 m	4 outrigger down	*0.8	*0.8	*4.9	*4.9	*8.7	8.5	*6.8	6.2	*5.6	4.7	*4.6	3.8				*3.6	3.1	16.0	
		4 outrigger up	*0.8	*0.8	*4.9	*4.9	5.4	3.5	4.0	2.5	3.0	1.9	2.4	1.4				2.0	1.1		
	0 (Ground)	4 outrigger down	*1.1	*1.1	*4.1	*4.1	*8.7	8.3	*6.8	6.0	*5.5	4.7	*4.5	3.7				*3.5	3.1	15.9	
		4 outrigger up	*1.1	*1.1	*4.1	*4.1	5.2	3.3	3.8	2.4	3.0	1.8	2.3	1.4				2.0	1.1		
	-1.0 m	4 outrigger down	*1.4	*1.4	*4.0	*4.0	*8.5	8.1	*6.7	5.9	*5.4	4.6	*4.3	3.7				*3.4	3.1	15.7	
		4 outrigger up	*1.4	*1.4	*4.0	*4.0	5.0	3.1	3.7	2.3	2.9	1.7	2.3	1.3				2.0	1.1		
	-2.0 m	4 outrigger down	*1.9	*1.9	*4.1	*4.1	*8.2	8.0	*6.5	5.8	*5.2	4.5	*4.1	3.7				*3.2	*3.2	15.4	
		4 outrigger up	*1.9	*1.9	*4.1	*4.1	4.9	3.0	3.6	2.2	2.8	1.7	2.3	1.3				2.0	1.1		
	-3.0 m	4 outrigger down	*2.3	*2.3	*4.3	*4.3	*7.8	*7.8	*6.2	5.8	*4.9	4.5	*3.8	3.6				*3.0	*3.0	15.1	
		4 outrigger up	*2.3	*2.3	*4.3	*4.3	4.9	2.9	3.6	2.2	2.8	1.7	2.3	1.3				2.1	1.2		
-4.0 m	4 outrigger down	*2.7	*2.7	*4.6	*4.6	*7.3	*7.3	*5.8	*5.8	*4.6	4.5	*3.4	*3.4				*2.8	*2.8	14.7		
	4 outrigger up	*2.7	*2.7	*4.6	4.4	4.9	2.9	3.6	2.1	2.8	1.7	2.3	1.3				2.2	1.3			
-5.0 m	4 outrigger down	*3.1	*3.1	*4.9	*4.9	*6.6	*6.6	*5.3	*5.3	*4.1	*4.1	*2.8	*2.8				*2.6	*2.6	14.2		
	4 outrigger up	*3.1	*3.1	*4.9	4.5	4.9	2.9	3.6	2.2	2.8	1.7	2.3	1.4				2.3	1.4			
-6.0 m	4 outrigger down	*3.5	*3.5	*5.4	*5.4	*5.8	*5.8	*4.6	*4.6	*3.5	*3.5						*2.3	*2.3	13.6		
	4 outrigger up	*3.5	*3.5	*5.4	4.6	4.9	3.0	3.6	2.2	2.9	1.7						*2.3	1.5			
-7.0 m	4 outrigger down			*5.6	*5.6	*4.8	*4.8	*3.8	*3.8	*2.6	*2.6						*1.9	*1.9	12.9		
	4 outrigger up			*5.6	4.7	*4.8	3.1	3.7	2.3	*2.6	1.8						*1.9	1.7			
-8.0 m	4 outrigger down					*3.6	*3.6	*2.8	*2.8								*2.1	*2.1	11.2		
	4 outrigger up					*3.6	3.2	*2.8	2.4								*2.1	*2.1			

# EQUIPMENT

## ZX250W-3 / ZX360W-3

### STANDARD EQUIPMENT

Standard equipment may vary by country, so please consult your Hitachi dealer for details.

#### ENGINE

- H/P mode control
- E mode control
- 50 A alternator
- Dry-type air filter with evacuator valve (with safety element)
- Cartridge-type engine oil filter
- Cartridge-type fuel double filters
- Air cleaner double filters
- Radiator, oil cooler and intercooler with dust protective net
- Radiator reserve tank
- Fan guard
- Isolation-mounted engine
- Auto idle system
- Fuel cooler
- Electrical fuel feed pump
- Engine oil drain coupler

#### HYDRAULIC SYSTEM

- E-P control system
- Quick warm-up system for pilot circuit
- Shockless valve in pilot circuit
- Boom-arm anti-drift valve
- Brake valves for travel circuits
- Control valve with main relief valve
- Extra port for control valve
- Suction filter
- Full-flow filter
- Pilot filter
- Swing dampener valve
- Steering filter
- Outriggers are individually controlled
- Power boost
- Auto power lift
- Hose rupture valve (boom, arm)
- Slow-return valve (boom, arm)

#### UPPERSTRUCTURE

- Undercover
- Fuel level float
- Hydraulic oil level gauge
- Rearview mirrors, left and right
- Swing parking brake
- 120 Ah batteries

#### UNDERCARRIAGE

- Parking brake
- Toolbox: left chassis
- Pattern tires (Pneumatic tire)
- Tire spacer
- 4-outrigger

#### FRONT ATTACHMENTS

- HN bushing
- Reinforced resin thrust plate
- Flanged pin
- Centralized lubrication system
- Boom damping system

#### CAB

- Cab guard
- OPG top guard fitted Level I (ISO 10262) compliant cab
- All-weather sound-suppressed steel cab
- Equipped with reinforced, tinted (green colour) glass windows
- 4 fluid-filled elastic mounts
- Windows on upper, lower-front and left side can opened
- Intermittent windshield retractable wipers
- Front window washer
- Footrest
- Electric double horn
- AM - FM radio with digital clock
- Retractable seat belt
- Drink holder
- Cigar lighter
- Ashtray
- Storage box
- Glove compartment
- Floor mat
- Short wrist control levers
- Pilot control shut-off lever with tilt-up console
- Engine shut-off switch
- Auto control air conditioner
- Rain guard
- Adjustable reclining seat with adjustable armrests
- Suspension seat with heater
- Transparent roof with slide curtain
- Sun visor
- Room lamp (delay type)
- Emergency lowering system

#### LIGHTS AND SIGNALS

- Two headlights
- Working lights
- Combination lamps
- Turn signal lamps
- Brake lamps
- Clearance lamps
- Hazard lamps

#### MONITOR SYSTEM

- Meter:
  - Speedometer, Tachometer, Hour meter, Odometer, Trip meter,
  - Engine coolant temperature gauge,
  - Hydraulic brake pressure gauge,
  - Fuel gauge, Clock
- Alarms:
  - Overheat, Engine warning,
  - Engine oil pressure, Alternator,
  - Minimum fuel level, Hydraulic filter restriction,
  - Air filter restriction, Brake oil pressure,
  - Operation signal, Operate signal is abnormal for Outrigger Blade,
  - Operate signal is abnormal for electrical lever,
  - Network, Work mode, Lock lever

#### PILOT LAMP

- Multi-monitor:
  - Digging mode, Auto-idle, Auto-acceleration,
  - Engine pre-heat, Parking brake, Working brake, Axle lock, Work light
- Column-monitor:
  - Turn signals, Head light high beam,
  - Hazard warning signals, F/N/R indication,
  - Clearance light, Pilot cut, Low speed

#### ALARM BUZZERS

- Front attachment operation while parking brake is on, Engine oil pressure, Engine overheat, Brake pressure, Overload, Error of electrical lever,
- High mounted cab operation

#### MISCELLANEOUS

- Standard tool kit
- Lockable machine covers
- Lockable fuel filling cap
- Skid-resistant tapes, plates and handrails
- Travel direction mark on chassis frame
- Onboard information controller
- Electric fuel refilling pump
- Large-capacity battery

## OPTIONAL EQUIPMENT

Optional equipment may vary by country, so please consult your Hitachi dealer for details.

### UNDERCARRIAGE

- Solid tire

### ATTACHMENTS

- Pilot accumulator

### CAB

- Air suspension seat with heater
- Laminated round glass window
- FOPS guard
- 12 V power source

### LIGHT

- Additional cab roof front light
- Additional cab roof rear light
- Rotating lamp

### OTHERS

- Pre-cleaner
- Biodegradable oil
- High-performance full flow filter (with restriction indicator)

# ZAXIS 250W/360W

These specifications are subject to change without notice.  
Illustrations and photos show the standard models, and may or may not include optional equipment, accessories, and all standard equipment with some differences in colour and features.  
Before use, read and understand the Operator's Manual for proper operation.

**Hitachi Construction Machinery**  
[www.hcme.com](http://www.hcme.com)

KA-EN059EU