

GENUINE ATTACHMENTS FOR VOLVO WHEEL LOADERS



VOLVO

We manufacture the perfect attachment for you



A genuine Volvo attachment gives you higher productivity and greater profitability due to its design and durability.

Genuine Volvo attachments are quite simply the only ones that can do your Volvo wheel loader full justice, since only Volvo knows enough about its own loaders to make the ideal attach-

ment for them. All genuine Volvo attachments are designed in detail according to the machine's lift-arm geometry, tractive effort, breakout torque and lifting force.

This guarantees that you get the quality, productivity and profitability you chose when you decided on a wheel loader from Volvo.



PENETRATION CAPACITY
LIFTFORCE
BREAKOUTFORCE

You opted once for quality and profitability – don't back away now. Don't compromise with quality and profitability by settling for anything less than genuine Volvo attachments.

It's really quite simple. An attachment that is made to fit many different wheel loader makes cannot possibly fit all of them equally well.

Furthermore, capacity tests show that genuine attachments give much higher productivity, and your investment in a Volvo wheel loader shows that you won't settle for less.

A genuine attachment weighs less and lasts longer

Genuine Volvo attachments are manufactured from the very best grades of steel. The parts of the attachment exposed to the greatest wear are made of steel with very high abrasion resistance and toughness, ensuring long life.

The less exposed parts are made of high-quality steel that permits a lighter attachment weight and therefore a heavier working load.

It is easier and more profitable to fill a genuine bucket

The key to the better load capacity and productivity of a genuine bucket lies in its geometry. It has just the right ratio between back and bottom for an easy-to-fill bucket, plus a bucket opening that enables it to be filled with a maximum heap.



New attachment bracket gives you excellent visibility

With Volvo's new hydraulic and visibility-optimized attachment bracket, you can quick-couple attachments and utilize the wheel loader in applications where special machines are otherwise often required.

The new attachment bracket is available as an option for some of Volvo's wheel loaders, and has a more open construction that gives you an excellent view of attachment and load.

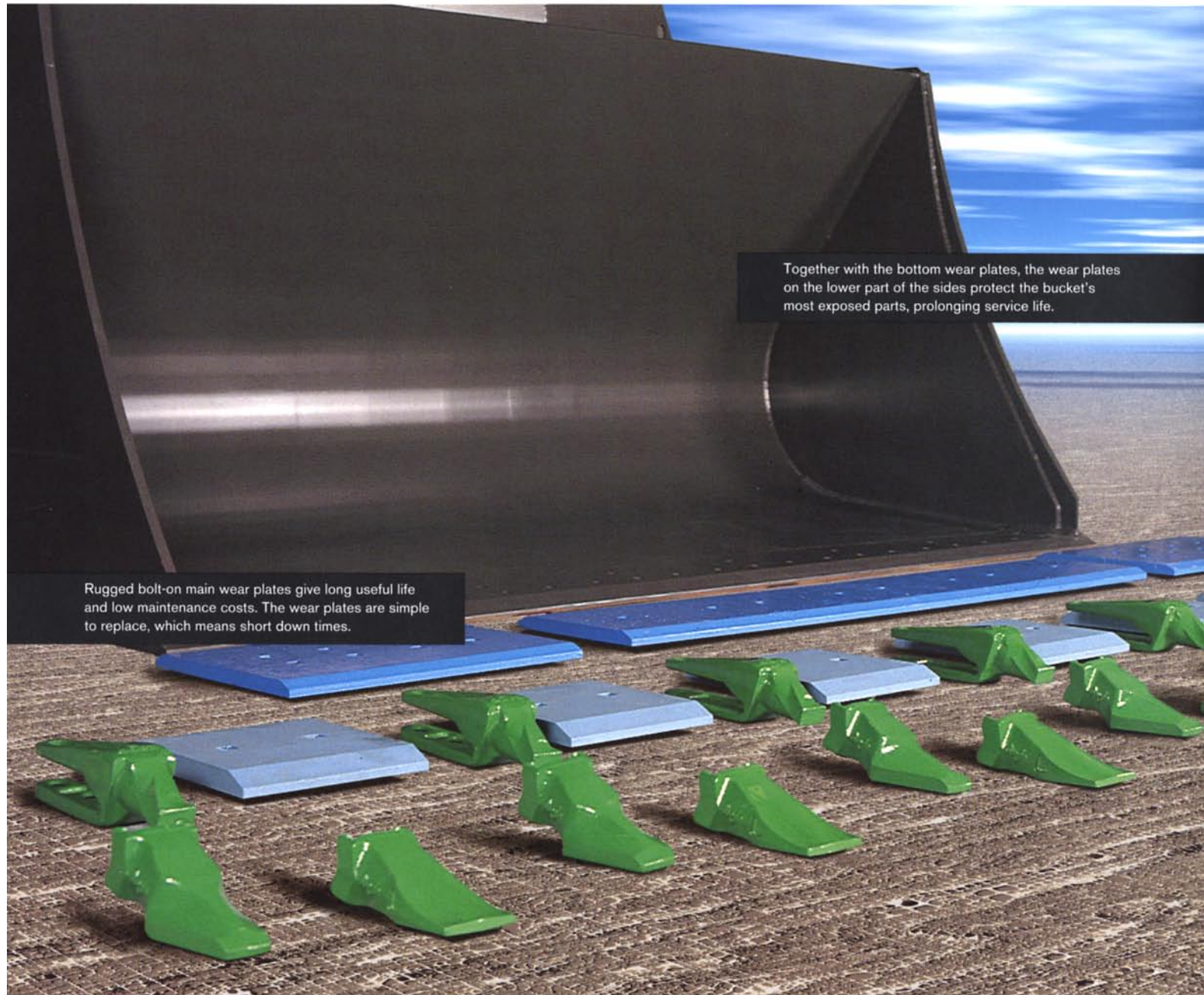
Less spill in the carry position with genuine bucket and TP Linkage

Volvo's patented TP Linkage system enables the bucket to be designed with the load located as close to the front axle as possible. This means that the bucket opening is in principle parallel to the ground.

This minimizes spillage, which has enabled us to make the bucket opening larger and permits a larger heap.



Equip your bucket to suit your needs



Together with the bottom wear plates, the wear plates on the lower part of the sides protect the bucket's most exposed parts, prolonging service life.

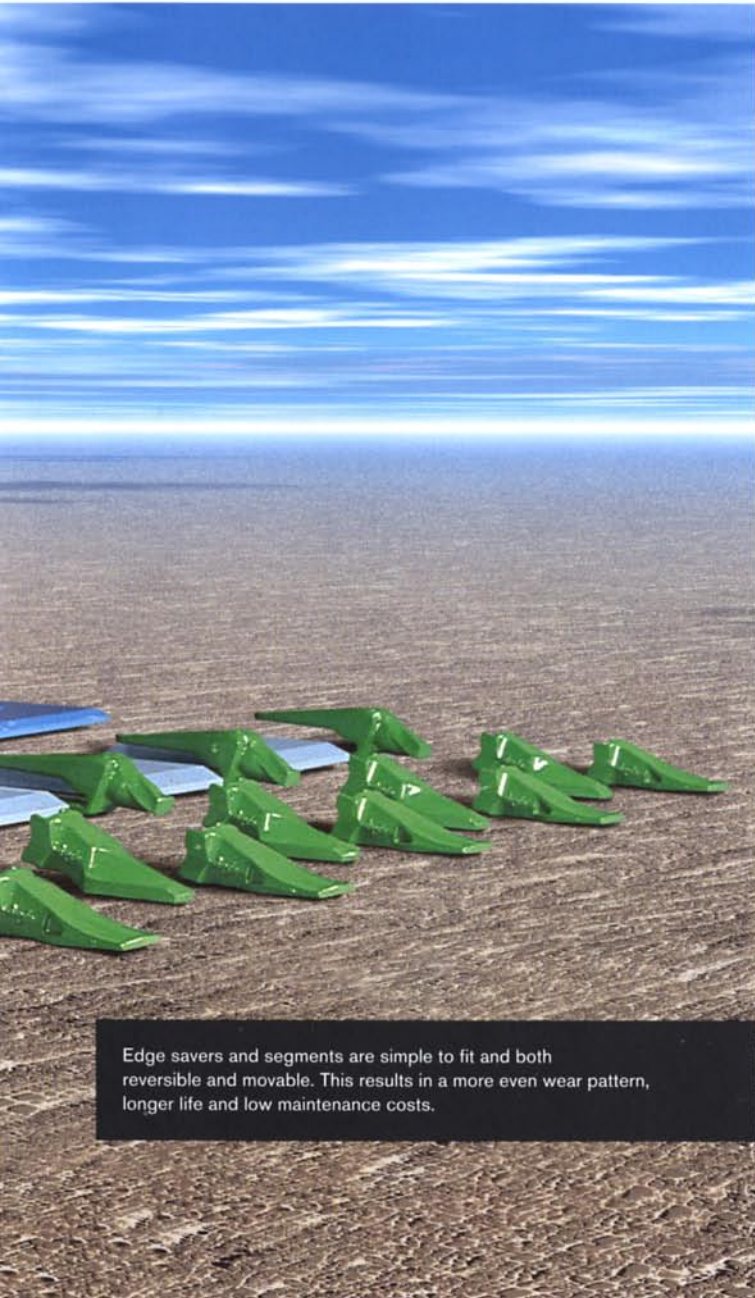
Rugged bolt-on main wear plates give long useful life and low maintenance costs. The wear plates are simple to replace, which means short down times.

To make it easier for you to customize your bucket to meet your particular needs, we are now giving you the chance to equip it yourself from Volvo's wide range of wear parts.

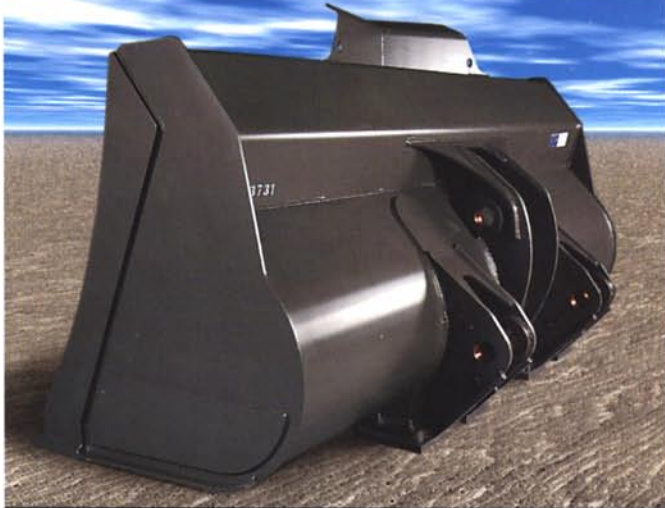
You choose yourself whether you want a bucket for hook-on or pin-on attachment, and how you want it equipped.

You can choose teeth for bolt-on or weld-on adapters, segments or edge savers, from leading manufacturers of wear parts.

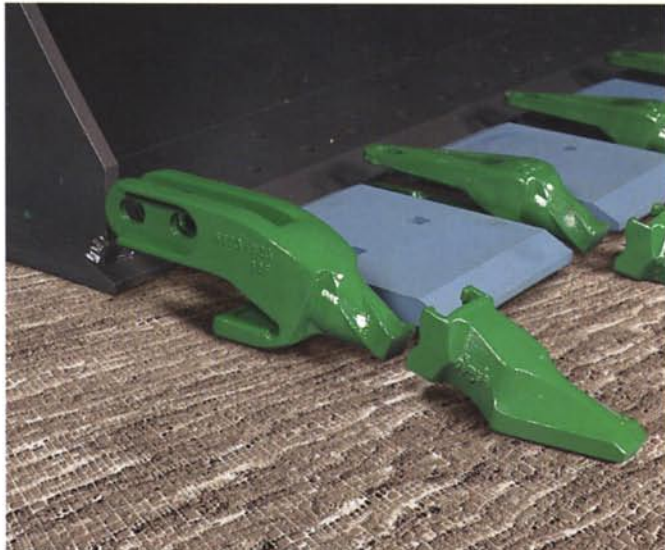
This means you get a genuine attachment equipped in just the way that is best suited for your applications.



Robust bucket hinge provides a stable and secure transmission of stress and long life.



The shape of the side cutters provides maximum abrasion resistance and minimizes side spillage.



Teeth, adapters and segments of alternative makes enable you to choose the system that suits you best.

Edge savers and segments are simple to fit and both reversible and movable. This results in a more even wear pattern, longer life and low maintenance costs.

Our flexibility is your cost effectiveness

The ability to customize the bucket to your needs makes your work more rational and profitable. Our comprehensive selection of buckets, replaceable main wear plates, and reversible segments and edge savers of alternative makes is your guarantee of optimum cost effectiveness.

The quality of the wear parts is a productivity factor

All edge savers, tooth adapters, segments and teeth have to comply with Volvo's quality requirements.

To maximize profitability and service life, all wear parts are made of hardened-and-tempered steel with high abrasion resistance and a hardness of 500 Brinell or more.

Effective wear parts boost productivity and reduce wear and tear on your wheel loader, giving you lower operating and maintenance costs.

The world's widest range of attachments



Volvo is the only manufacturer of wheel loaders that designs and manufactures a full range of attachments with buckets, log grapples, fork attachments and material handling arms.

Volvo also offers a wide selection of special attachments for various tasks that can broaden your business opportunities.

The special attachments are manufactured by selected suppliers to Volvo's quality standards.

A genuine Volvo attachment is the only kind that allows you to fully utilize the capacity of your wheel loader.

ROCK & GENERAL PURPOSE

Spade nose rock bucket that can be equipped with:

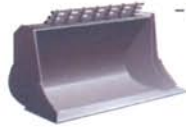
- teeth
- teeth and segments
- edge savers.



Capacity: 1.2-6.9 m³.

Straight rock bucket that can be equipped with:

- teeth
- teeth and segments



Capacity: 3.6-6.9 m³.

Straight general purpose bucket that can be equipped with:

- teeth with weld-on or bolt-on adapters
- teeth and segments
- edge savers



Capacity: 1.2-8.3 m³.

EXAMPLES OF LIGHT MATERIAL & GRADING

Light material bucket equipped with bolt-on edge saver as standard



Capacity: 2.2-14.0 m³.

High-dump light materials bucket equipped with bolt-on edge saver as standard



Capacity: 1.8-13.0 m³.

Grading bucket



Capacity: 1.6-2.1 m³.

MATERIAL HANDLING



Fork frame

Can be combined with different fork tines.



Fork tines

Can be combined with fork frame.



Vertically adjustable fork tine



Fork attachment with fixed fork tines

For handling of boulders.



Fork tine extension, 2.5 meter



Material handling arm in two or three sections.

Available in mechanical and hydraulic versions.

TIMBER HANDLING



Unloading grapple

Area: 1,0-3,7 m².



Sorting grapple

Area: 1,0-3,5 m².



General purpose grapple

Area: 0,7-2,0 m².



Tree-length grapple

Area: 1,7-2,0 m².



Heel/kick-out



Tropical timber grapple

Area: 1,1-1,6 m².



High-lift grapple

Area: 0,5-1,5-0,7-2,0 m².



Combi-fork with one-piece clamp

Area: 1,1-2,4 m².



Combi-fork with two-piece clamp

Area: 1,1-2,4 m².

EXAMPLES OF ALLIED SUPPLIES



Grass and brush removal unit



Bale clamp



Snow plough



Sweeper



Technology on Human Terms

The Volvo Construction Equipment Group is one of the world's leading manufacturers of construction machines, with a product range encompassing wheel loaders, excavators, articulated haulers, motor graders and more.

The tasks they face vary considerably, but they all share one vital feature: technology which helps man to perform better: safely, efficiently and with care of the environment. We refer to it as Technology on Human Terms.

The sheer width of the product range means it is always possible to choose exactly the right machine and attachment for the job. Each machine also comes with the quality, continuity and security which is represented

by the Volvo name. The security of the service and parts organisation. The security of always having immediate access to leading-edge research and technical development. A machine from Volvo meets the very highest demands in all kinds of jobs, under all conditions. The world over.

The Volvo Construction Equipment Group develops, manufactures and markets Volvo, Pel-Job, Champion and Samsung construction equipment. We are a Volvo company with production facilities on four continents and a market presence in over 100 countries.

For more information please visit our web site:
www.volvo.com

Under our policy of continuous improvement, we reserve the right to change specifications and design without prior notice. The illustrations do not necessarily show the standard version of the machine.

VOLVO

**Volvo Construction
Equipment Group**

Ref. No. 21 2 669 2305
 Printed in Sweden 1999.05-4.0
 Volvo, Eskilstuna

English
 WLO