

# *SOLAR* 170w-v

## DAEWOO NEW WHEEL TYPE EXCAVATOR

- Operating Weight
  - Articulated Boom : 18,200 kg (40,120 lb)
  - Mono Boom : 17,400 kg (38,360 lb)
- Bucket Capacity (PCSA) : 0.34~0.91m<sup>3</sup> (0.44~1.19cu.yd)
- Rated Engine Power : 148HP / 2,100 rpm  
110 kw / 2,100 rpm



**DAEWOO**  
DAEWOO HEAVY INDUSTRIES &  
MACHINERY LTD.

# Technical Data



## Engine

**Model** ..... DAEWOO DB58T1  
**Type** ..... Water-cooled, 4-cycle,  
 6-cylinder in line, direct  
 injection chamber type  
 diesel engine.

### Rated flywheel horse power

DIN 6271, net ..... 110KW (150PS)  
 at 2,100 rpm  
 SAE J1349, net ..... 110KW (148HP)  
 at 2,100 rpm

**Piston displacement** ..... 5,785cc (353cu.in)

**Maximum torque** ..... 55 kgf.m (540Nm,  
 398 lbf.ft) at 1,600 rpm

**Bore and stroke** ..... 102mm × 118mm  
 (4.0" × 4.6")

**Starting system** ..... 24V electric motor

**Batteries** ..... 2 × 12V × 100 AH

Auto-idle system : Engine rpm is reduced automatically to the low  
 idle rpm after a lapse of approx. 4 seconds with all control levers in  
 neutral position, thus saving energy and reducing noise.

Max. oil flow ..... 49.7 l/min  
 (13.1US gpm, 10.9 Imp gpm)  
 Pressure setting ..... 206 bar (2,987 psi, 210 kgf/cm<sup>2</sup>)

### Main relief valves

Boom/Arm/Bucket ..... 343bar  
 (4,978 psi, 350 kgf/cm<sup>2</sup>)  
 Travel circuit ..... 314bar  
 (4,551 psi, 320 kgf/cm<sup>2</sup>)

### Overload relief valves

Boom circuit ..... 353 bar  
 (5,120 psi, 360 kgf/cm<sup>2</sup>)  
 Arm circuit ..... 353 bar  
 (5,120 psi, 360 kgf/cm<sup>2</sup>)  
 Bucket circuit ..... 353 bar  
 (5,120 psi, 360 kgf/cm<sup>2</sup>)

**Swing motor relief valve** ..... 275 bar  
 (3,982 psi, 280 kgf/cm<sup>2</sup>)

## Hydraulic cylinders

High-strength piston rods and tubes are used. Cylinder cushion  
 mechanism is provided for boom, articulated boom. Arm and bucket  
 cylinders to assure shock-free operation and extend life of cylinder.

### Mono boom

Cylinders	Qty	Bore × Rod dia. × Stroke
Boom	2	115 × 80 × 1,195 mm (4.5" × 3.1" × 47")
Arm	1	125 × 90 × 1,450 mm (4.9" × 3.5" × 57")
Bucket	1	110 × 75 × 1,025 mm (4.3" × 3.0" × 40")

### Articulated boom

Cylinders	Qty	Bore × Rod dia. × Stroke
Boom	2	115 × 80 × 1,032 mm (4.5" × 3.1" × 40.6")
Arti. Boom	1	200 × 130 × 639 mm (7.9" × 5.1" × 25.2")
Arm	1	125 × 90 × 1,450 mm (4.9" × 3.5" × 57")
Bucket	1	110 × 75 × 1,025 mm (4.3" × 3.0" × 40")

## Hydraulic filters

All hydraulic circuits have high-quality hydraulic filters for  
 protection against oil contamination and longer life of hydraulic  
 components. Suction filter is built in suction line, and 10 μ full-  
 flow filter in return circuit, drain filter in drain line, brake filter in  
 brake circuit and pilot filter in pilot circuit.



## Swing mechanism

High-torque, axial piston motor with planetary reduction gear  
 bathed in oil. Swing circle is a single-row, shear type ball  
 bearing with induction-hardened internal gear. Internal gear and  
 pinion immersed in lubricant. Swing reactionless valve is  
 internally attached. Spring applied hydraulically released  
 parking brake. A swing lock clamps the superstructure for  
 transportation.

· **Swing speed** ..... 0 to 13.1 rpm (min<sup>-1</sup>)  
 · **Rear swing radius** ..... 2,450 mm (8'0")



## Hydraulic system

Daewoo's EPOS-V (Electronic Power Optimizing System) can  
 achieve maximum job efficiency and reduce fuel consumption.

- 3-power mode working system.
- 3-Working mode selection system.
- Computer aided engine pump control.
- Hydraulic system assures fully independent and combined  
 operations.
- Cross-sensing and fuel saving pump system.
- Auto idle system.
- 2 speed travel system for high traction force and travel speed.
- Travel motor brake torque-up system.
- Cruise travel system.

**Main pumps** ..... 2 variable displacement  
 axial piston pumps.

Max. oil flow ..... 2 × 184 l/min  
 (2 × 48.6 US gpm,  
 2 × 40.5 Imp gpm)

**Pilot pump** ..... Gear pump

Max. oil flow ..... 19.9 l/min (5.3 US gpm,  
 4.4 Imp gpm)

Pressure setting ..... 39 bar (569 psi, 40 kgf/cm<sup>2</sup>)

**Brake pump** ..... Gear pump

Max. oil flow ..... 17.6 l/min (4.6 US gpm,  
 3.9 Imp gpm)

Pressure setting ..... 157 bar (2,276 psi, 160 kgf/cm<sup>2</sup>)

**Steering pump** ..... Gear pump

# Technical Data



## Drive

Fully hydrostatic driven, 2 speed power shift transmission, variable displacement, high torque, axial piston motor, foot pedal controls provide smooth travel, hub reduction type front steering axle and rear rigid axle.

**Travel speed** ..... 0 to 35 km/h (22 mph)

\*A maximum speed restriction of 20 km/h is available as an option.

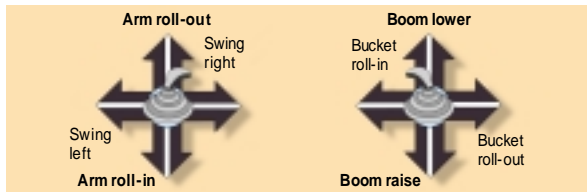
### Maximum traction

force ..... 10,510 kgf (23,171 lbf)  
Gradeability ..... 34.9° (69.8%) continuous



## Controls 3 implement levers

Pilot pressure control type. Right lever is for boom and bucket control, left lever for swing and arm control. Left rear lever is for dozer and outrigger. Left bottom pedel is for articulated boom.



## Super-structure revolving frame

A deep, full-reinforced box section. Heavy-gauge steel plates used for ruggedness.



## Operator's cab

Independent, shock and noise-free roomy ISO standard operator's cab. 4 side safety glass windows give all-round visibility. Front window slides up and stores in the roof. Left and right side windows opens for ventilation. Fully adjustable reclining seat : fwd./rev. and up/down. Cab cooler is optionally available.

### Noise Levels (dynamic valus)

**Lpw External noise** ..... **104 dB(A)** (95/27/EC)  
**Lpa Operator ear noise** ..... **77 dB(A)** (95/27/EC)



## Undercarriage

Heavy-duty frame, all-welded stress-relieved structure. Top grade materials used for toughness. Specially heat-treated connecting pins. 10.00-20-14PR(OTR) double tires with tire spacer. Front axle oscillating hydraulically. Front outrigger and rear dozer as a standard. Front dozer as an option. Rear outrigger as an option.



## Brake

Full sealed wet discs service brakes operated fully hydraulic and full sealed wet discs parking brake operated hydraulically.



## Weight

Shipping weight-includes 10% fuel,  
5,150mm(16'11") mono boom, 2,600mm(8'6") arm,  
1,140mm(3'9") backhoe, rear dozer and front outrigger  
..... 17,400 kg (38,360 lb)

## Major component weight

### Mono boom

	kg	lb
Arm : 2,200mm(7'3")	537	1,184
Arm : 2,600mm(8'6")	584	1,287
Arm : 3,100mm(10'2")	639	1,409
Mono boom : 5,150mm(16'11")	1,081	2,383
Upper structure	4,950	10,913
Counter weight	2,700	5,952

### Articulated boom

	kg	lb
Arm : 2,200mm(7'3")	537	1,184
Arm : 2,600mm(8'6")	584	1,287
Upper boom : 4,050mm(13'3")	860	1,896
Lower boom : 1,900mm(6'2")	560	1,235
Upper structure	4,950	10,913
Counter weight	2,700	5,952



## Service refill capacities

	Liters	US gal	Imp gal
<b>Fuel tank</b>	280	74.0	61.6
<b>Cooling system</b>	49	12.9	10.8
<b>Lubrication</b>			
Engine oil	20.5	5.42	4.51
Swing drive	5	1.32	1.1
Final drive (each)	2	0.53	0.44
Hydraulic tank	205	54.2	45.1



## Safety

- Swing lock for long-distance travel and transportation.
- Safety glass windows.
- Spring-engaged/hydraulic-released disc type parking brake.
- Main relief valves.
- Window protector. .... Optional.
- Lever lock.
- Preventing engine starting on gear shift.
- Monitor for operation.(Engine coolant temp., battery charge, engine oil press, air cleaner clogging, pilot oil filter clogging, brake oil filter clogging, drain filter clogging, Brake oil press, Engine speed)
- Electric double horn.
- Overload relief valves.
- Circuit breaker.

# Technical Data



## Standard equipment

All weather steel cab with all-round visibility. Safety glass windows. Wide screen wiper. Sliding, fold-in front window. Sliding side window. Lockable door. Deluxe fully adjustable reclining seat. Lever lock. Cab heater. Two room lamps.

## Backhoe attachments

Boom and arm are of all welded. Low stress, full box section design. Bucket of all welded, high-strength steel structure.



## Optional equipment

Buckets, Arm, Air conditioner, Front dozer, Rear outrigger, Articulated boom, Fuel filler pump, Additional working lamp(on the top of cabin)

## Digging forces (Maximum radial tooth forces)

	2.2m (7'3")	2.6m (8'6")	3.1m (10'2")
Bucket digging force *	19,900 kgf	11,200 kgf	11,400 kgf
	110 KN	110 KN	110 KN
	24,030 lbf	24,690 lbf	25,130 lbf
Arm digging force *	10,600 kgf	9,200 kgf	8,200 kgf
	104 KN	90 KN	80 KN
	23,370 lbf	20,280 lbf	18,080 lbf

\*At power boost

## Articulated boom

	2.2m (7'3")	2.6m (8'6")
Bucket digging force *	11,200 kgf	
	110 KN	
	24,690 lbf	
Arm digging force *	10,600 kgf	9,200 kgf
	104 KN	90 KN
	23,370 lbf	20,280 lbf

\*At power boost

## Buckets

Capacity		Width		Weight	Recommendation		
PCSA, heaped	CECE, heaped	Without side cutters	With side cutters		2.2m(7'3")Arm	2.6m(8'6")Arm	3.1m(10'2")Arm
0.34 m <sup>3</sup> (0.44 cu.yd <sup>3</sup> )	0.31m <sup>3</sup>	650mm (26")	564mm (22")	415kg (915 lb)	A	A	A
0.45 m <sup>3</sup> (0.59 cu.yd <sup>3</sup> )	0.4m <sup>3</sup>	778mm (31")	692mm (27")	456kg (1,005 lb)	A	A	A
0.57 m <sup>3</sup> (0.75 cu.yd <sup>3</sup> )	0.51m <sup>3</sup>	928mm (37")	842mm (33")	518kg (1,142 lb)	A	A	A
0.7 m <sup>3</sup> (0.92 cu.yd <sup>3</sup> )	0.61m <sup>3</sup>	1,070mm (42")	984mm (39")	584kg (1,287 lb)	A	A	B
0.76 m <sup>3</sup> (1 cu.yd <sup>3</sup> )	0.66m <sup>3</sup>	1,140mm (45")	1,054mm (41")	611kg (1,347 lb)	A	A	B
0.81 m <sup>3</sup> (1.06 cu.yd <sup>3</sup> )	0.7m <sup>3</sup>	1,168mm (46")	1,058mm (42")	692kg (1,526 lb)	A	B	C
0.91 m <sup>3</sup> (1.19 cu.yd <sup>3</sup> )	0.8m <sup>3</sup>	1,290mm (51")	1,180mm (46")	733kg (1,616 lb)	B	B	C

A. Suitable for materials with density of 1,800 kg/m<sup>3</sup> (3,030 lb/cu.yd) or less

B. Suitable for materials with density of 1,600 kg/m<sup>3</sup> (2,700 lb/cu.yd) or less

C. Suitable for materials with density of 1,100 kg/m<sup>3</sup> (1,850 lb/cu.yd) or less

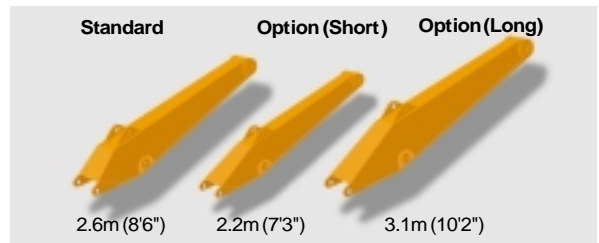
## Instrument panel

Engine coolant temperature gauge. Electric hourmeter. Fuel meter. Tachometer. Voltmeter. Hydraulic oil pump pressure gauge. Monitor for during operation(Engine oil pressure, battery charge, engine oil filter clogging, air cleaner clogging, brake filter clogging, pilot filter clogging and return filter clogging). Alarm buzzer(Engine oil pressure, engine coolant temperature and brake oil pressure). Working lights pilot lamp.

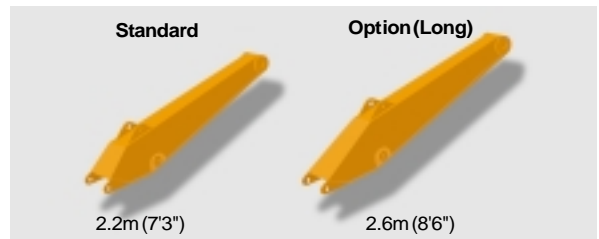
## Miscellaneous

Car stereo. Electric double horn. Cigarette lighter. Ashtray. Magazine box. Swing lock. Lockable machine cover. Radiator reserve tank. Air cleaner evacuator. Hyd. oil filters. Working lights(basic machine and boom).

## Arm Mono boom

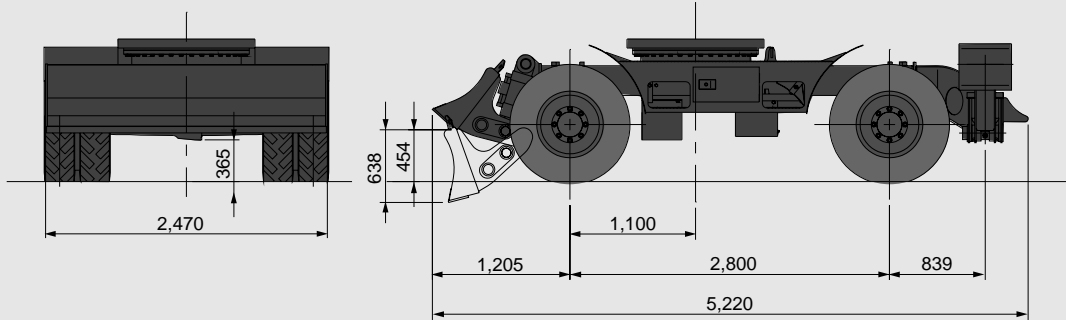


## Articulated boom

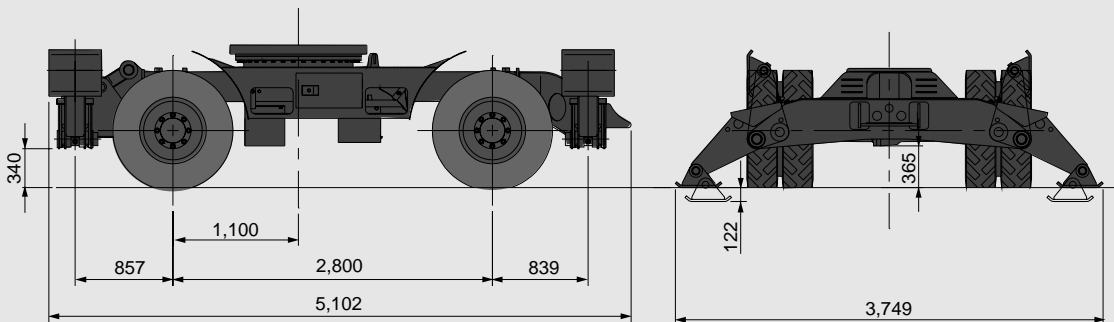


# Undercarriage

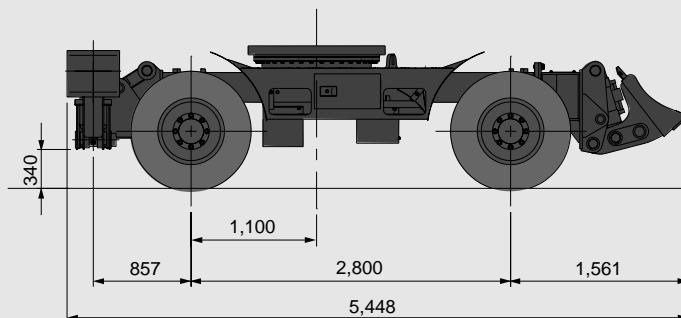
## Undercarriage with front outrigger and rear dozer



## Undercarriage with 2 sets of outriggers

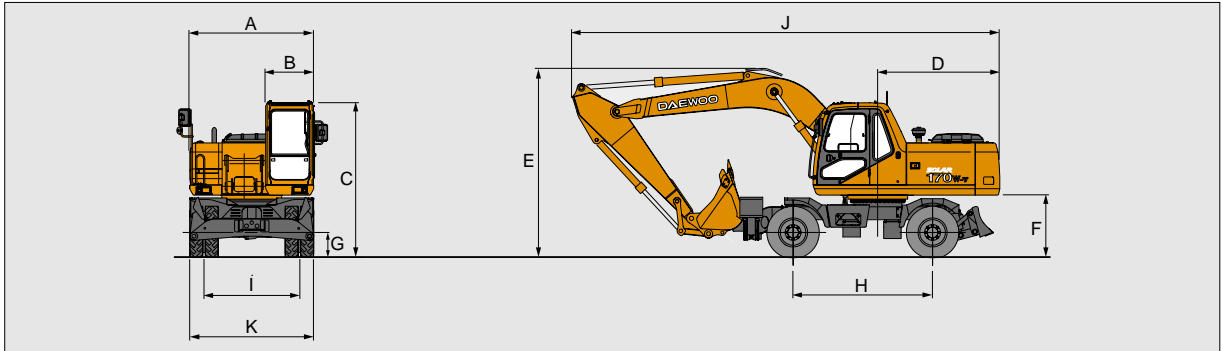


## Undercarriage with front dozer and rear outrigger



# Specifications & Working Ranges (Mono boom)

## Dimensions



## General specifications

### Operating Weight

Mono Boom	17,400kg (38,360lb)
-----------	---------------------

### Bucket

Heaped Capacity Range	PCSA 0.34 ~0.91m <sup>3</sup> (0.44~ 1.19 cu.yd)
-----------------------	---

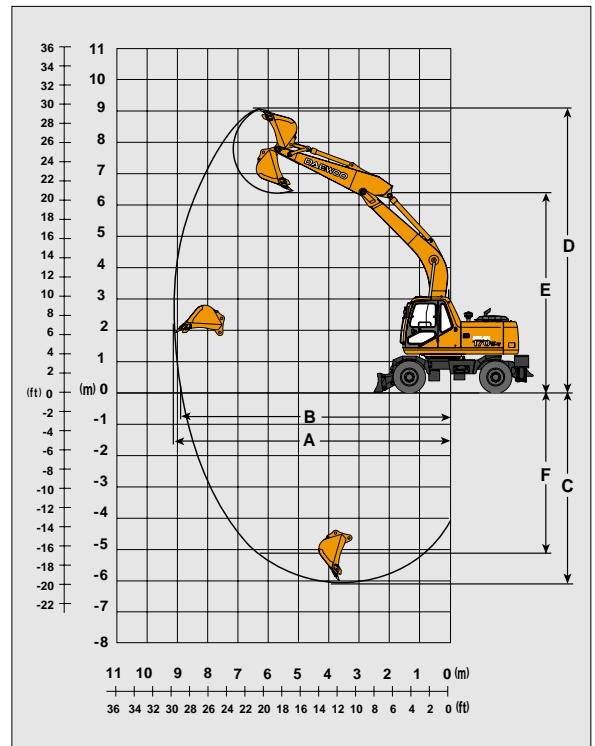
### Maneuverability

Travel Speed	35 km/h (22 mph)
Gradeability	34.9°(69.8 %)
Ground Clearance	340mm (13")

### Dimensions

A Overall width of upper structure	2,490mm(8'2")
B Overall width of cab	960mm(3'2")
C Overall height of cab	3,103mm(10'2")
D Tail swing radius	2,450mm(8'0")
E Overall height of boom	3,795mm(12'5")
F Clearance under counterweight	1,249mm(4'1")
G Ground clearance	340mm(13")
H Wheel base	2,800mm(9'2")
I Tread	1,914mm(6'3")
J Overall length	8,595mm(28'2")
K Overall tire width with fender 10.00-20-14PR Double tire (standard)	2,496mm(8'2")

## Working ranges

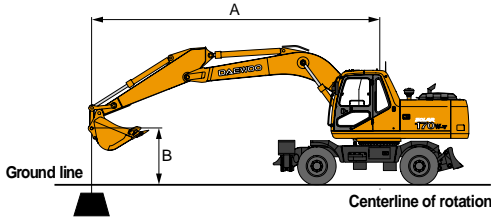


## Working ranges- with mono block boom

Boom	Mono boom 5,150mm (16'11")		
Arm	2,600mm (8'6")	2,200mm (7'3")	3,100mm (10'2")
A. Max. digging reach	9,071mm (29'9")	8,732mm (28'8")	9,509mm (31'2")
B. Max. digging reach at ground level	8,855mm (29'1")	8,507mm (30'5")	9,304mm (30'6")
C. Max. digging depth	6,006mm (19'8")	5,657mm (18'7")	6,506mm (21'4")
D. Max. digging height	9,026mm (29'7")	8,821mm (28'11")	9,197mm (30'2")
E. Max. dump height	6,289mm (20'8")	5,999mm (19'8")	6,464mm (21'2")
F. Vertical wall digging depth	5,019mm (16'6")	4,554mm (14'11")	5,494mm (18')

# Lifting Capacities (Mono boom)

## Standard



A : Load radius from centerline of rotation  
B : Load point height

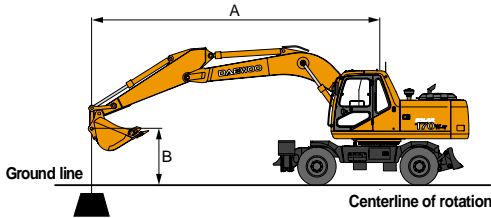
**Metric (5.15m Mono Boom, 2.6m Arm, 0.76m<sup>3</sup> Bucket)** Unit : 1,000kg

A(m)	2m		3m		4m		5m		6m		Max. Reach		A(m)					
	0°	30°	0°	30°	0°	30°	0°	30°	0°	30°	0°	30°						
6									3.50	2.51	-2.58	2.09	6.67					
5									3.69	2.46	-3.52	-2.57	7.19					
4							4.34	3.24	3.99	4.33	-3.69	-3.69	7.53					
3		8.26	6.70	6.09	4.35	5.01	5.01	3.09	4.39	4.39	2.30	2.91	1.48	7.73				
2		7.71	-8.23	6.21	-8.23	7.27	-7.27	7.26	7.26	6.71	2.95	-6.01	4.44	2.21	2.92	1.43	-3.14	7.79
1		6.19	5.88	-6.19	8.14	8.14	8.11	8.11	8.11	6.28	6.26	5.17	4.67	3.42	3.17	3.17	7.74	
0 (ground)	3.60	-3.60	7.07	5.79	8.36	3.77	5.71	2.72	4.26	2.07	5.01	1.45	3.26	7.56				
-1	6.73	-6.73	-8.91	5.76	8.27	3.72	5.66	2.68	4.23	2.04	4.60	1.55	3.48	7.23				
-2	7.98	-7.98	-10.88	5.80	8.28	3.72	5.64	2.67	4.22	2.03	4.56	1.74	3.88	6.74				
-3	10.63	-10.63	-12.73	5.93	7.53	3.77	5.68	2.70	4.32	2.10	4.30	2.09	6.03					
-4	14.45	-14.45	-14.45	6.05	6.09	3.89	5.67	2.84	4.80	2.10	4.66	2.82	5.03					
-5	18.26	-18.26	-18.26	6.12	6.12	4.94	5.93	2.94	4.80	2.10	4.77	4.77	3.48					

**Feet (16'11" Mono Boom, 8'6" Arm, 0.76m<sup>3</sup> Bucket)** Unit : 1,000 lb

A(m)	5ft		10ft		15ft		20ft		25ft		Max. Reach		A(m)
	0°	30°	0°	30°	0°	30°	0°	30°	0°	30°	0°	30°	
20									6.17	5.12	-6.63	-6.80	22.05
15					8.47	8.00	8.51	4.98	5.92	3.68	-6.58	-6.58	24.33
10		21.85	16.48	-22.05	7.38	9.30	4.71	6.47	3.25	6.48	-6.48	-6.48	25.40
5		19.57	-19.57	-15.76	-15.76	8.68	8.68	-6.58	-6.58	-6.48	-6.48	-6.48	25.45
0 (ground)	8.25	-8.25	45.80	14.55	16.29	7.50	9.01	4.45	6.79	3.28	6.64	3.20	24.48
-1	7.99	-7.99	-15.96	-15.96	-17.17	-17.17	-11.71	9.78	-9.11	7.35	-8.57	-8.57	24.48
-5	14.86	-14.86	-23.42	14.59	16.18	7.41	8.82	4.28	9.71	7.31	-9.88	-9.88	22.34
-10	22.52	-22.52	-23.57	-23.57	-14.98	-14.98	-11.58	9.71	9.48	4.60	-10.25	-10.25	18.64
-15	22.90	-22.90	-43.19	-43.19	-13.19	-13.19	-10.65	10.51	10.51	10.51	-10.51	-10.51	11.88

## Option



A : Load radius from centerline of rotation  
B : Load point height

**Metric (5.15m Mono Boom, 3.1m Arm, 0.57m<sup>3</sup> Bucket)** Unit : 1,000kg

A(m)	2m		3m		4m		5m		6m		Max. Reach		A(m)
	0°	30°	0°	30°	0°	30°	0°	30°	0°	30°	0°	30°	
7									2.67	2.62	-2.18	2.18	6.54
6									2.67	2.67	-2.17	1.88	7.21
5									3.35	2.56	-3.35	2.20	7.69
4							8.96	3.36	3.69	3.69	2.28	1.48	8.01
3		7.19	7.03	6.41	4.51	4.61	3.20	4.12	3.38	3.69	2.28	1.38	8.20
2		8.40	-7.19	6.47	-7.19	6.68	4.22	5.36	4.61	4.12	2.28	2.41	8.25
1		6.40	6.05	-6.40	6.88	6.88	6.88	5.36	4.98	4.98	2.59	2.59	8.21
0 (ground)	8.77	-8.77	7.52	5.86	7.74	4.00	5.91	2.90	4.41	2.20	4.75	1.32	8.04
-1	5.35	-5.35	7.52	5.86	7.52	4.00	5.91	2.90	4.41	2.20	4.75	1.32	8.04
-2	7.15	-7.15	10.42	5.78	8.62	3.82	6.88	3.76	6.14	4.25	4.60	1.33	7.73
-3	8.24	-8.24	10.42	5.78	8.62	3.82	6.88	3.76	6.14	4.25	4.60	1.33	7.27
-4	11.85	-11.85	10.42	5.78	8.62	3.82	6.88	3.76	6.14	4.25	4.60	1.33	6.63
-5	14.85	-14.85	10.42	5.78	8.62	3.82	6.88	3.76	6.14	4.25	4.60	1.33	5.74
-6	18.83	-18.83	10.42	5.78	8.62	3.82	6.88	3.76	6.14	4.25	4.60	1.33	4.44

**Feet (16'11" Mono Boom, 10'2" Arm, 0.57m<sup>3</sup> Bucket)** Unit : 1,000 lb

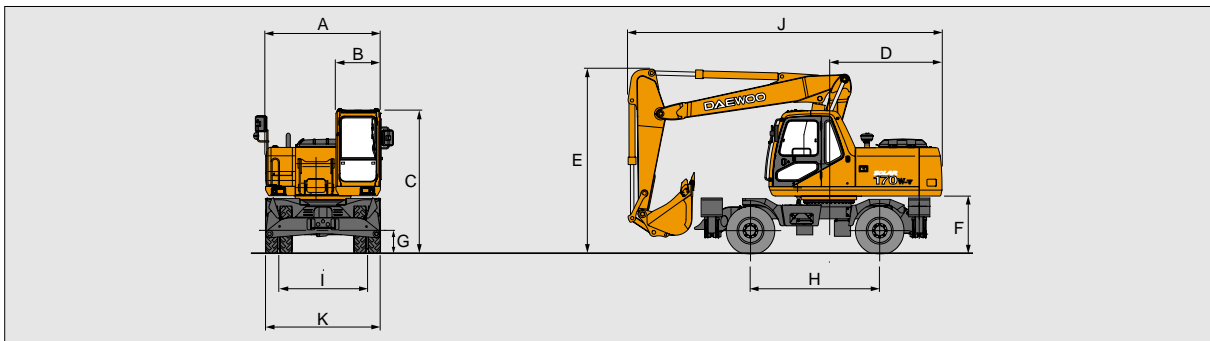
A(m)	5ft		10ft		15ft		20ft		25ft		Max. Reach		A(m)
	0°	30°	0°	30°	0°	30°	0°	30°	0°	30°	0°	30°	
25									-4.94	4.94	-4.94	4.94	20.27
20									-7.11	5.34	-7.11	5.34	23.82
15									-7.86	5.18	-7.86	5.18	25.92
10		15.92	41.00	-11.13	7.86	9.12	4.88	6.60	3.31	5.36	3.02	6.36	26.93
5		16.39	15.38	-15.43	8.11	8.17	4.59	6.46	3.18	5.77	2.92	6.77	26.98
0 (ground)	7.51	-7.51	16.11	14.56	16.30	7.57	8.90	4.36	6.33	3.07	6.09	2.95	26.06
-1	12.96	-12.96	21.50	14.48	16.15	7.43	8.79	4.26	6.88	3.34	6.62	3.21	24.08
-5	19.13	-19.13	24.20	14.75	-15.81	7.36	8.88	4.34	7.46	3.47	7.18	3.47	20.70
-10	27.56	-27.56	17.26	15.42	-10.79	7.43	9.07	4.34	7.46	3.47	7.18	3.47	14.97

Note  
1. Load point is the hook on the back of the bucket.  
2. Rated loads are based on hydraulic capacity.  
3. Rated loads do not exceed 87% of hyd. Capacity or 75% of tipping capacity.

0 : Rating over front  
0 : Rating over side or 360 degree  
0 : Ground

# Specifications & Working Ranges (Articulated boom)

## Dimensions



## General specifications

### Operating Weight

Articulated Boom	18,200 kg (40,120 lb)
------------------	-----------------------

### Bucket

Heaped Capacity Range	PCSA 0.34 ~0.91m <sup>3</sup> (0.44~ 1.19cu.yd)
-----------------------	--

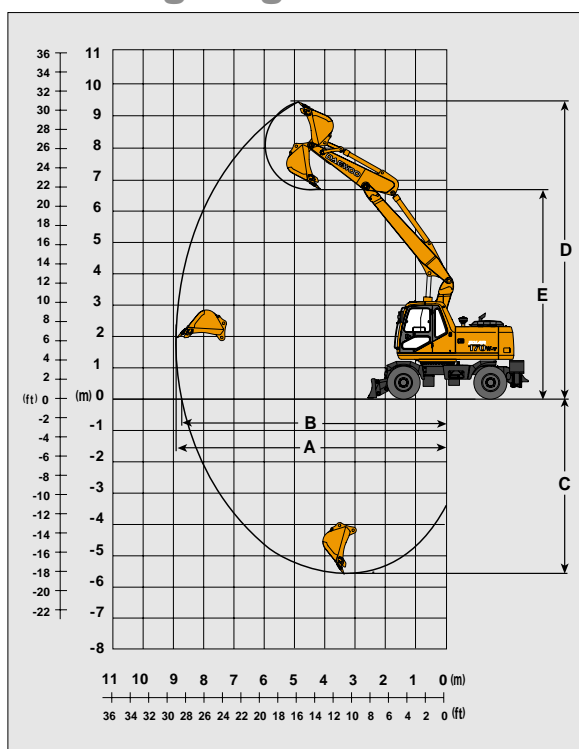
### Maneuverability

Travel Speed	35 kg/h
Gradeability	34.2°(68 %)
Ground Clearance	340mm (13")

### Dimensions

A Overall width of upper structure	2,490mm(8'2")
B Overall width of cab	960mm(3'2")
C Overall height of cab	3,103mm(10'2")
D Tail swing radius	2,450mm(8'0")
E Overall height of boom	4,000mm(13'1")
F Clearance under counterweight	1,249mm(4'1")
G Ground clearance	340mm(13")
H Wheel base	2,800mm(9'2")
I Tread	1,914mm(6'3")
J Overall length	6,805mm(22'4")
K Overall tire width with fender 10.00-20-14PR Double tire (standard)	2,496mm(8'2")

## Working ranges



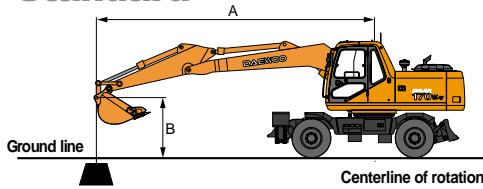
## Working ranges- with articulated boom

Boom	Articulated boom 5,310mm (17'5")	
Arm	2.200mm (7'3")	2.600mm (8'6")
Bucket	0.76m <sup>3</sup> (1 cu.yd)	0.7m <sup>3</sup> (0.92 cu.yd)
A. Max. digging reach	8,921mm (29'3")	9,326mm (30'7")
B. Max. digging reach at ground level	8,701mm (28'6")	9,116mm (29'11")
C. Max. digging depth	5,591mm (18'4")	6,000mm (19'8")
D. Max. digging height	9,507mm (31'2")	9,826mm (32'3")
E. Max. dump height	6,697mm (21'11")	7,005mm (22'11")



# Lifting Capacities (Articulated boom)

## Standard



A : Load radius from centerline of rotation  
B : Load point height

### Metric (Articulated Boom, 2.6m Arm, 0.7m<sup>3</sup> Bucket)

Unit : 1,000kg

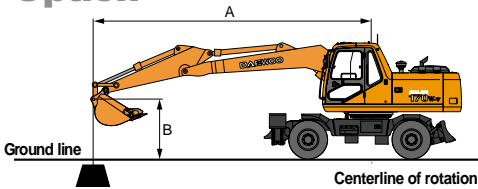
A(m)	2m		3m		4m		5m		6m		Max. Reach		A(m)	
	⊖	⊕	⊖	⊕	⊖	⊕	⊖	⊕	⊖	⊕	⊖	⊕		
8							-1.91	-1.91			2.03	2.03	5.38	
7									2.04	2.04	2.25	2.25	6.34	
6									2.03	2.03	2.35	2.35	7.03	
5							2.05	2.05	2.24	2.24	2.38	2.38	7.51	
4				2.80	2.80	2.67	2.67	2.62	2.62	2.43	2.46	1.49	7.84	
3			-5.68	6.68	4.10	-4.10	3.41	-3.41	3.12	-3.10	2.33	2.56	1.39	8.03
2				-5.68	6.68	4.10	-4.10	4.25	-4.25	2.95	-3.63	2.22	2.75	8.09
1				-4.99	4.99	6.67	-6.67	5.03	-5.03	4.16	-4.16	2.12	2.79	8.05
0 (ground)				-5.90	5.90	6.90	-6.90	6.72	-6.72	5.03	-5.03	4.32	2.06	7.87
-1	-5.08	-5.08	-7.83	5.70	7.83	3.68	-3.68	5.71	-5.71	2.65	-2.65	2.02	3.03	7.56
-2	-7.27	-7.27	-10.31	5.73	8.33	3.67	-3.67	5.68	-5.68	2.63	-2.63	2.01	3.35	7.09
-3	-9.83	-9.83	-11.62	5.85	8.40	3.72	-3.72	5.72	-5.72	2.66	-2.66	2.04	3.94	6.43
-4					8.23	3.85	-3.85	5.86	-5.86	2.76	-2.76	5.12	2.45	5.50

### Feet (Articulated Boom, 8'6" Arm, 0.7m<sup>3</sup> Bucket)

Unit : 1,000 lb

A(m)	5ft		10ft		15ft		20ft		25ft		Max. Reach		A(m)	
	⊖	⊕	⊖	⊕	⊖	⊕	⊖	⊕	⊖	⊕	⊖	⊕		
25												4.77	4.77	19.56
20								4.80	4.80			6.19	4.18	23.22
15							6.57	5.57	5.08	5.44	3.43	6.31	3.41	25.37
10			-14.50	14.50	8.48	7.47	7.01	4.77	6.58	3.20	6.73	3.03	6.73	26.41
5				-12.31	12.31	12.65	7.58	8.66	4.46	6.43	3.07	6.14	2.93	26.45
0 (ground)				-13.32	13.32	15.71	7.41	8.90	4.24	6.43	3.03	6.31	2.97	25.51
-5	-13.83	-13.83	-20.80	14.50	16.28	7.31	8.83	4.17	8.90	9.61	7.77	6.97	6.88	23.48
-10				-27.56	27.56	14.82	15.74	7.17	9.54			8.84	4.14	19.98

## Option



A : Load radius from centerline of rotation  
B : Load point height

### Metric (Articulated Boom, 2.2m Arm, 0.76m<sup>3</sup> bucket)

Unit : 1,000kg

A(m)	2m		3m		4m		5m		6m		Max. Reach		A(m)	
	⊖	⊕	⊖	⊕	⊖	⊕	⊖	⊕	⊖	⊕	⊖	⊕		
7							1.98	-1.98			2.39	2.39	5.77	
6							2.07	-2.07	2.39	2.39	2.61	2.19	6.52	
5							2.45	-2.45	2.56	2.48	2.81	1.86	7.04	
4				4.15	4.15	3.36	-3.36	3.05	-3.05	2.91	2.40	3.02	1.66	7.39
3				-4.26	4.67	4.26	-4.26	3.07	-3.07	3.38	2.20	3.38	1.53	7.60
2				-6.05	4.67	4.01	-4.01	2.91	-2.91	3.89	2.02	3.89	1.47	7.66
1				-7.11	3.81	5.34	-5.34	2.78	-2.78	4.38	2.12	4.40	1.46	7.61
0 (ground)				6.80	5.71	7.89	-7.89	5.71	-5.71	4.40	2.06	4.40	1.50	7.42
-1	6.61	6.61	8.44	5.74	6.80	7.89	3.69	5.71	2.66	4.28	2.03	4.62	1.60	7.09
-2	8.44	8.44	11.75	5.80	8.38	7.89	3.71	5.72	2.66	4.28	2.04	4.62	1.81	6.58
-3				-11.44	5.91	8.47	3.78	5.80	2.72	4.29	5.42	4.63	1.81	6.58

### Feet (Articulated Boom, 7'3" Arm, 0.76m<sup>3</sup> Bucket)

Unit : 1,000 lb

A(m)	10ft		15ft		20ft		25ft		Max. Reach		A(m)	
	⊖	⊕	⊖	⊕	⊖	⊕	⊖	⊕	⊖	⊕		
25				4.70	4.70					6.30	6.03	17.54
20				4.61	4.61	6.60	5.14			5.78	4.76	21.56
15			7.65	7.65	6.47	6.47	6.22	4.99		6.47	5.78	23.87
10			-13.23	13.23	8.32	7.30	7.61	4.73		6.88	3.36	24.98
5				-13.23	13.23	9.32	7.61	7.61		6.88	3.36	24.98
0 (ground)				13.82	7.66	9.12	4.43	6.73	3.23	6.72	3.22	25.02
-5	-13.61	-13.61	-16.31	7.41	8.93	4.26	8.93	9.65		6.94	3.30	24.03
-10	23.90	14.62	16.05	7.26	8.88	4.23	9.60			7.69	3.66	21.86
-15	26.45	14.64	16.58	7.57	9.16	4.40				10.11	4.84	18.03

Note 1. Ratings are based on SAE J1097. 2. Load point is the hook on the back of the bucket. 3. \*Rated loads are based on hydraulic capacity. 4. Rated loads do not exceed 87% of hydraulic capacity or 75% of tipping capacity.

⊖ : Rated lift capacity-over front  
⊕ : Rated lift capacity-over side (free on wheel/outrigger on ground)



---

**Seoul Office :**

20st Fl. Daewoo Center 541 Namdaemunno 5-ga,  
Chung-gu, Seoul, Korea.

Mail : C. P. O Box 7955 Seoul, Korea.

Tel : (02)726-3114 Fax : (02)726-3149

Website : www.dhiltltd.co.kr

**Daewoo Heavy Industries America Corporation.**

2905 Shawnee Industrial Way, Suite 100, Suwanee,  
GA 30024

Tel : 770-831-2200 Fax : 770-831-0480

**Euro Daewoo UK :**

Daewoo House Unit 6.3 Nantgarw Park Cardiff

CF4 7QU, U.K

Tel : (01443)842273 Fax : (01443)841933

**Euro Daewoo S. A. :**

1A Rue Achille Degrace, 7080 Frameries, Belgium

Tel : (065)61.32.30 Fax : (065)67.73.38

**Daewoo Maschinen Vertriebs GmbH :**

Hans-Böckler strasse 29.

40764 Langenfeld-Fuhrkamp. Germany

Tel : (02173)8509-20 Fax : (02173)980729

\* Specifications are subject to change without prior notice

EL0032 (2000.11)