

Standard equipment

Automatic gear shifting
 8 selectable power stages
 Automatic battery main switch (coupled to ignition lock)
 Automatic power increase in DRIVE stage
 CNH diesel engine
 Consoles adjustable in height and length
 Direct injection with turbo charger and intercooler
 Driver seat individually adjustable in all positions
 Electrical preparation 12 V
 Electrohydraulic servo control
 Electronic immobiliser
 Encased ball bearing slewing ring with long-life lubrication
 Engine and pump monitoring by power limit control
 Ergonomic design of arm rests and foot pedals

Large toolbox under the step
 LCD monitor with integrated error diagnosis function
 Loss-free swing-off and braking of upperstructure, adjustable
 Noise-insulated cab mounted on elastic blocks
 Patented disc brakes for jolt-free work
 Pump Management System
 Robust, shielded arc, welded modular chassis in box section design
 Safety tinted glasses
 Steering column is adjustable in all positions
 Sun blinds, roof window, transparent rain protection
 Swing drive with low-wearing disc brake
 Triple-pump-hydraulic system with two service pumps and separate swing pump
 Water-cooled, low-consumption and low-exhaust engine pursuant to EU directive

Optional equipment

30 km/h overdrive
 Tyres
 4 x 600/40 - 22.5 Alliance
 8 x 10.00 - 20 with baffle rings, Bridgestone, twin tyres
 4 x Elastic solid rubber tyres 10 - 20 with baffle rings
 Air conditioning
 Armoured glass for front window
 Auxiliary heating
 Axles with self-locking differential
 Central lubrication
 Cooling box
 Dippersticks: 2.3 m/2.6 m/2.9 m

Dozer blade with hydraulic parallel guidance
 Electric fuel filling pump
 Front and roof guards
 FOPS protection on cab roof and front window
 Hydraulic system for hammer, grab, shears
 Independent stabilisers control
 Interim bearing for cardan shaft
 Safety load hook on coupler
 Safety system for hoist mode
 Stabilisers for secure grip on uneven ground
 Transport holder for grabs

**Note: standard and optional equipment may vary by country.
 Consult your FIAT KOBELCO dealer for specific.**

Buckets

SAE Capacity	CECE heaped capacity	Width	Weight
0.52 m ³	0.45 m ³	750 mm	503 kg
0.62 m ³	0.53 m ³	850 mm	537 kg
0.78 m ³	0.66 m ³	1000 mm	634 kg
1.00 m ³	0.83 m ³	1200 mm	651 kg
1.10 m ³	0.91 m ³	1300 mm	698 kg
1.31 m ³	1.09 m ³	1500 mm	766 kg

At your own dealership

The information contained in this brochure is intended to be a general nature only. The FIAT KOBELCO company may at any time and from time to time, for technical or other necessary reasons, modify any of the details or specifications of the product described in this brochure. Illustrations do not necessarily show products in standard conditions. The dimensions, weights and capacities shown herein, as well as any conversion data used, are approximate only and are subject to variations within normal manufacturing techniques.

Published by FIAT KOBELCO CONSTRUCTION MACHINERY S.p.A. - <http://www.fiatkobelco.com>
 Printed in Italy - LEADER Firenze - Cod. 60076 - INB - Printed 05/04



EVOLVING TECHNOLOGY



FIAT KOBELCO IS A BRAND OF CNH.
 CNH: THE TOTAL SOLUTIONS CHOICE FOR YOUR SPECIFIC BUSINESS NEEDS.

E215W ***EVOLUTION***



Net flywheel power **129 kW - 175 hp**

Operating weight (max) **21 479 kg**

Bucket capacity **from 0.52 to 1.31 m³**



EVOLVING TECHNOLOGY

Specifications



Tier 2 emissioned engine

Net flywheel power (ISO 14396)129 kW/175 hp
 Net flywheel power (ISO 9249)118 kW/160 hp
 Rated rpm2000
 Make and modelCNH F4BE0684A
 Typediesel, 4 stroke,direct injection, turbocharged with aftercooler
 Total displacement5.9 l
 Number of cylinders6
 Bore x stroke102 x 120 mm

Fuel and engine oil filters located remote for easy replacement

Engine rpm electronic control

Automatic idling return switch with controls in neutral - "Auto-Idling"

Start at -15° external temperature supplied as standard equipment (optional start at -25°)

The engine conforms to 97/68/CE STAGE 2



Electrical system

Operating voltage24 V
 Maintenance-free batteries supplied standard.....2
 Capacity.....100 Ah
 Alternator70 A
 Starter motor.....4 kW



Hydraulic system

New Smart Hydraulic System for improved controllability and all simultaneous movements. Closed circuit Load Sensing.

Automatic Priority System device.

Engine Speed Sensing Control device and hydraulic pump electronic control for total installed power use.

Swing Pressure Control device for outstanding controllability and high operating comfort during superstructure acceleration/stop.

Flow Pump Saving and Shock Less System circuits to minimise oil at discharge and ensure perfectly homogeneous movements.

Easy To Use multi-function monitor:

Three variable displacement, axial piston pumps

Implement/Travel - maximum delivery2 x 200 l/min
 Swing - maximum delivery112 l/min
 Max pressure without Power Boost340 bar
 Max pressure with Power Boost370 bar
 Max swing pressure.....390 bar

Hydraulic cylinder:

- Lift cylinder2
 Bore x stroke (mono).....135 x 1050
 Bore x stroke (triple articulation)135 x 985
 - Dipper cylinder1
 Bore x stroke135 x 1400
 - Bucket cylinder1
 Bore x stroke115 x 1075
 - Positioning cylinder (only triple articulation)1
 Bore x stroke180 x 745



Transmission

"Full PowerShift transmission" with variable displacement hydraulic motor.

Max. speeds	1st travel range	2nd travel range
Slow	5.34	20 km/h
Medium	6.67	25 km/h
Fast	8.00	30 km/h

Max. traction force.....13000 daN



Swing

Slewing motoraxial piston type
 Slewing brake.....oil bath disc type with automatic insertion and hydraulic release or free action
 Final driveoil bath, planetary reduction
 Circle.....grease bath type
 Slewing speed.....9.5 rpm



Axles

New axles complete with oil bath disc brakes mounted directly on wheel hubs. Rigid rear axle.

Oscillating front axles: oscillation±7°

The front axle can be locked hydraulically in any position:

safety valves lock the axle in case of a breakdown.



Braking system

Service brakes: oil bath disc type acting on all four wheels.

Operating brake: acting on service brakes plus front axle oscillation lock.

Parking brake: oil bath type.

Emergency brake: double braking circuit and automatic parking brake insertion with engine cut out.



Steering system

Type.....ORBITROL with safety valve
 Pump.....gear type
 Steering cylinderone, double effect
 Steering with engine cut out and excavator on the move.



Tyres

8 x 10.00 - 20 M.ZR. F7.5, MITAS, twin type

8 x 10.00 - 20 with baffle rings, Bridgestone, twin type

4 x 40.00 - 22.5 Alliance

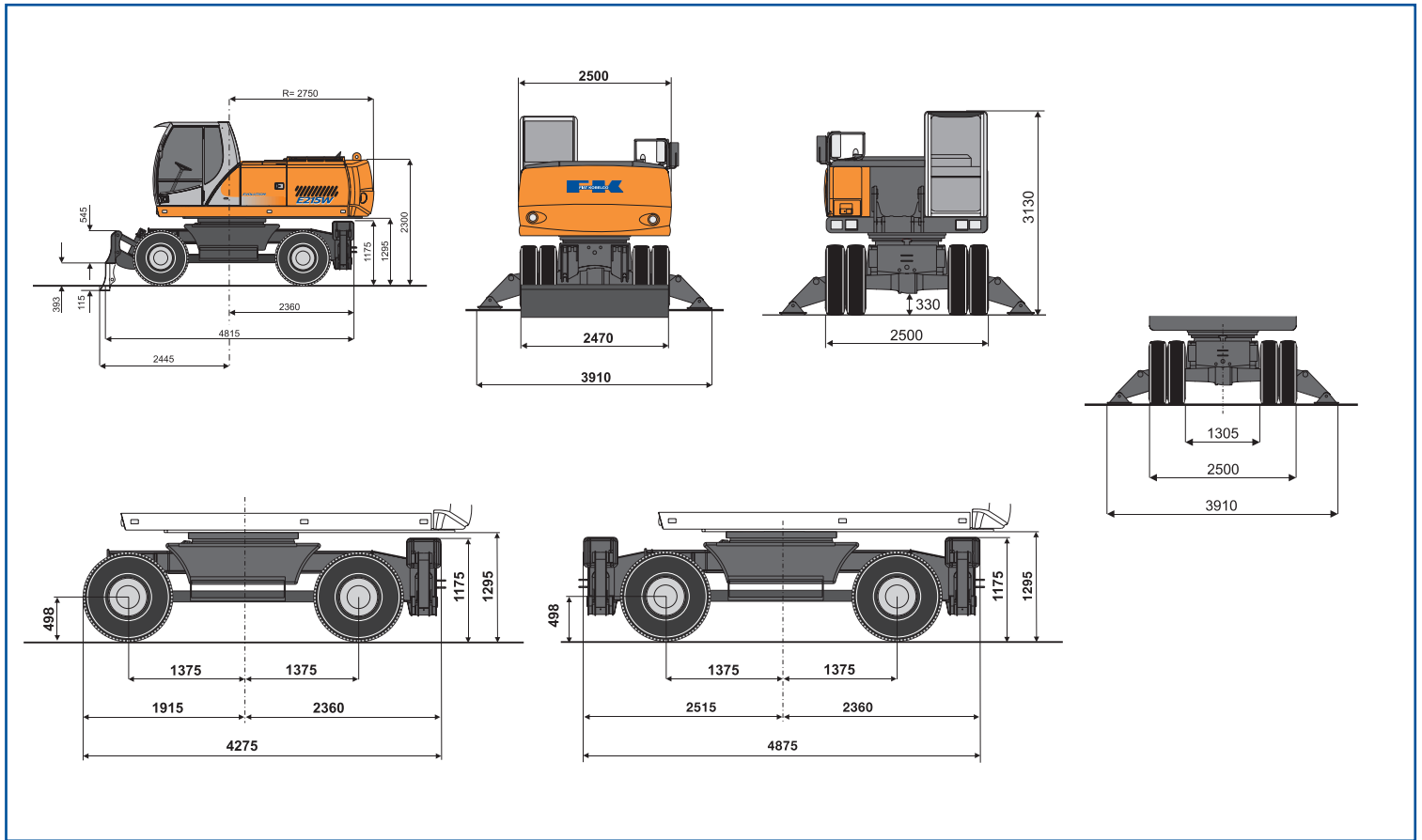
Elastic solid rubber tyres 10 - 20 with baffle rings



Capacities

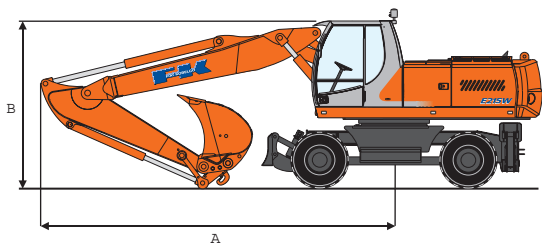
Fuel325 l
 Cooling system.....29 l
 Engine oil.....16 l
 Swing drive.....4 l
 Hydraulic tank160 l
 Hydraulic system250 l

Dimensions (mm) - Equipped with twin 10.00-20 tyres



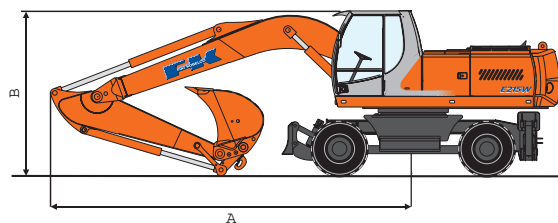
Transport dimensions

Triple articulation



Dipperstick	mm	2300	2600	2900
A Length to centre	mm	6700	6680	6670
B Height to top of booms	mm	3160	3160	3220

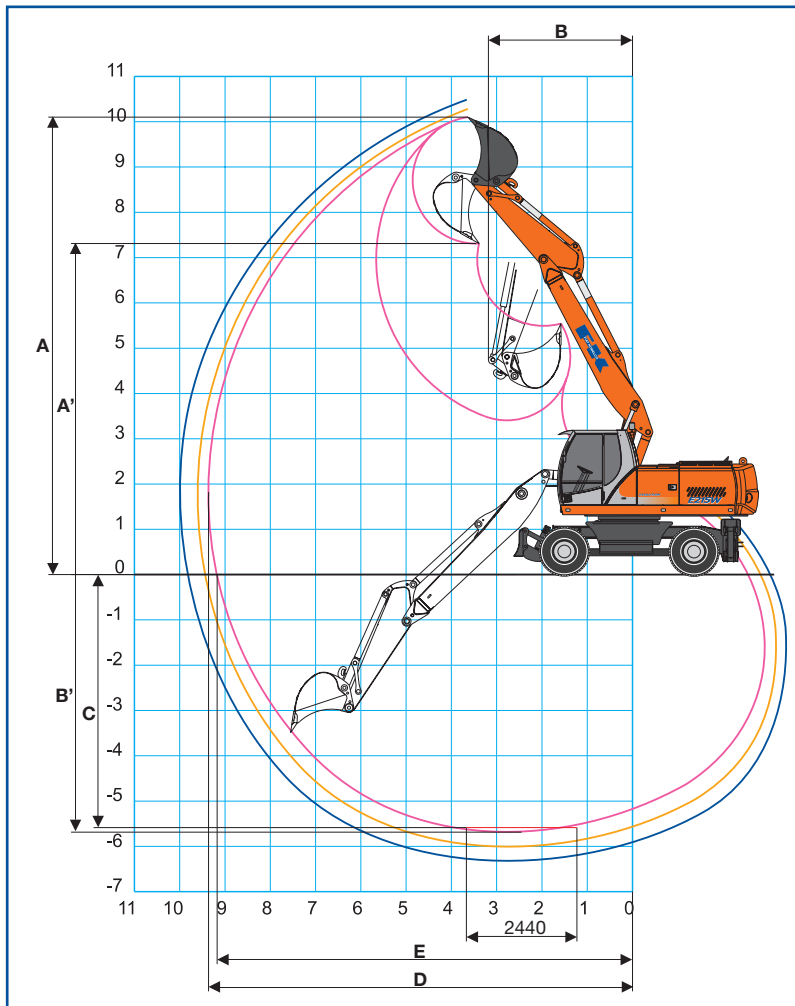
One piece boom



Dipperstick	mm	2300	2600	2900
A Length to centre	mm	6950	6950	6950
B Height to top of booms	mm	3250	3250	3250

Triple articulation

Digging performance



Dipperstick	mm	2300	2600	2900
A	mm	10100	10200	10400
A'	mm	7300	7400	7600
B	mm	3200	3100	3200
B'	mm	5700	6000	6300
C	mm	5600	5900	6200
D	mm	9400	9600	10000
E	mm	9200	9400	9700

Max breakout force				
Bucket	daN	14500	14500	14500
Dipperstick	daN	12200	11300	10500

* Approved for unescorted road travel

Operating weight

Equipped with twin 10.00 - 20 tyres

Dipperstick (mm)	2 stabilisers front or rear (kg)	4 stabilisers (kg)	Blade rear (kg)	Blade rear / 2 stabilisers (kg)
2300	20280	21345	19719	20882
2600	20350	21415	19789	20952
2900	20414	21479	19853	21016



A spacious, noise-insulated, comfortable cab is a setting for healthy, fatigue-free work.



Cab features

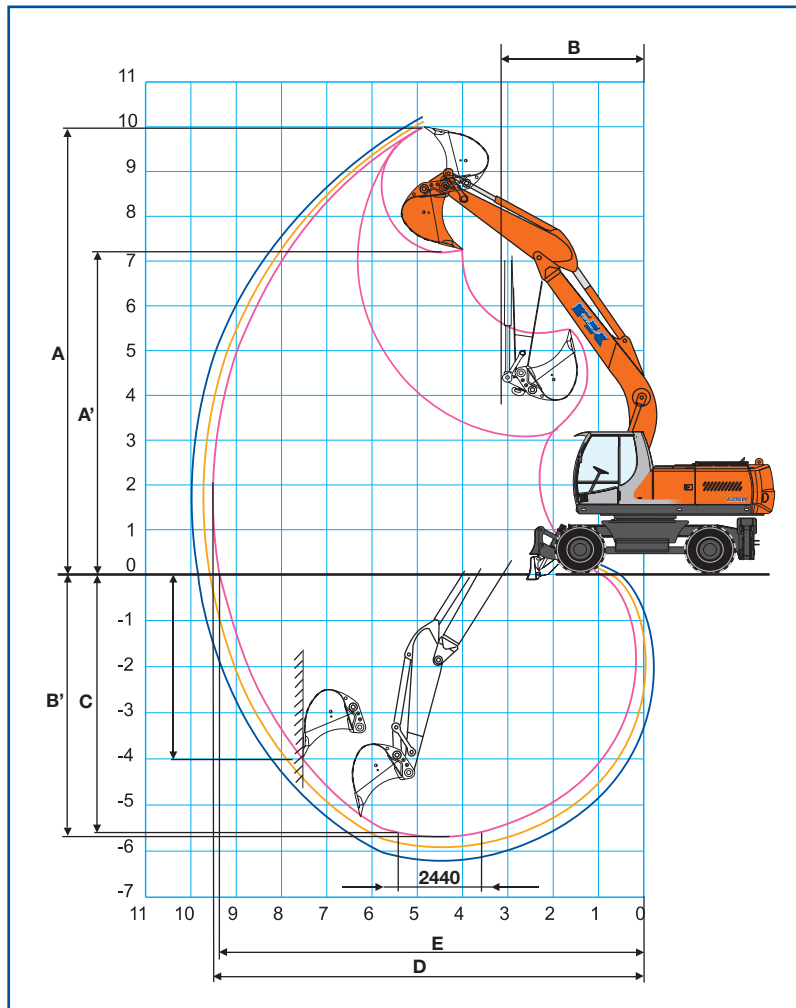
The "all position" tiltable steering wheel's column assures to the operator the best suitable ergonomic position.



The ergonomic seat can be adjusted in all direction and the consoles can be also moved along with the seat. A new air conditioner assures optimal climate in every weather condition.

One piece boom

Digging performance



Dipperstick	mm	2300	2600	2900
A	mm	9960	9970	10150
A'	mm	7210	7250	7430
B	mm	3260	3160	3190
B'	mm	5620	5920	6220
C	mm	5420	5730	6050
D	mm	9540	9750	10030
E	mm	9360	9570	9860

Max breakout force				
Bucket	daN	14500	14500	14500
Dipperstick	daN	12200	11300	10500

Operating weight

Equipped with twin 10.00 - 20 tyres

Dipperstick (mm)	2 stabilisers front or rear (kg)	4 stabilisers (kg)	Blade rear (kg)	Blade rear / 2 stabilisers (kg)
2300	19479	20544	18918	20081
2600	19549	20614	18988	20151
2900	19613	20678	19052	20215



Monitor

The multi-function display controls and monitors all works: 12 individually pre-set tools and output levels can be precisely defined and selected. Work area and work sensitivity can be set, while the display diagnoses and display any error. Easy to reach, easy to use.



Undercarriage

Its modular design allows to satisfy all customer's needs. In addition it features a Full PowerShift transmission for soft travel and an excellent ground clearance to easily move on uneven terrains.



Front attachment

The machine is available in monobloc or Triple Articulation version. In both version, the machine shows outstanding performances in reach, digging depth and breakout force.

Triple articulation - Lifting capacity

Blade

Dipperstick: 2 300 mm

Blade rear / up

Height	Reach										
	3.0 m		4.5 m		6.0 m		7.5 m		max		
	Front	Side	Front	Side	Front	Side	Front	Side	Front	Side	
7.5 m									3.8*	3.0	5.9
6.0 m					4.8	3.1			3.4*	2.0	7.1
4.5 m			6.5*	4.7	4.7	3.0	3.1	1.8	2.8	1.5	7.8
3.0 m	12.0*	8.3	7.1	4.5	4.6	2.9	3.0	1.7	2.4	1.3	8.2
1.5 m	13.5	8.0	7.0	4.4	4.5	2.9	2.9	1.6	2.3	1.2	8.3
0.0 m	13.5	8.0	7.0	4.3	4.5	2.6	2.8	1.5	2.3	1.2	8.1
-1.5 m	13.8	7.4	6.9	4.0	4.1	2.3	2.6	1.3	2.6	1.3	7.6
-3.0 m	13.6	7.2	6.4	3.6	3.8	2.1			3.2	1.7	6.6
-4.5 m	12.9	6.7							7.1	3.9	4.2

Blade rear / down

Height	Reach										
	3.0 m		4.5 m		6.0 m		7.5 m		max		
	Front	Side	Front	Side	Front	Side	Front	Side	Front	Side	
7.5 m									3.8*	3.4	5.9
6.0 m					5.1*	3.4			3.4*	2.3	7.1
4.5 m			6.5*	5.3	5.3*	3.4	4.4*	2.0	3.2*	1.8	7.8
3.0 m	12.0*	9.4	8.1*	5.1	6.1*	3.3	5.2*	2.0	3.2*	1.5	8.2
1.5 m	13.6*	9.1	10.1*	4.9	7.0*	3.3	5.6	1.9	3.5*	1.4	8.3
0.0 m	16.0*	9.2	11.2*	4.9	7.8*	3.0	5.5	1.7	4.3*	1.4	8.1
-1.5 m	18.7*	8.6	11.4*	4.6	8.0	2.7	5.3	1.6	5.2	1.6	7.6
-3.0 m	19.4*	8.4	11.9*	4.1	7.7*	2.4			6.0*	2.0	6.6
-4.5 m	16.4*	7.9							9.9*	4.5	4.2

Dipperstick: 2 600 mm

Blade rear / up

Height	Reach										
	3.0 m		4.5 m		6.0 m		7.5 m		max		
	Front	Side	Front	Side	Front	Side	Front	Side	Front	Side	
7.5 m					3.6*	3.0			3.2*	2.8	6.2
6.0 m					4.8	3.1			2.9*	1.9	7.3
4.5 m			6.0*	4.8	4.7	3.0	3.1	1.8	2.6	1.5	8.0
3.0 m	13.0*	8.5	7.1	4.5	4.5	2.9	3.1	1.8	2.3	1.2	8.4
1.5 m	13.4	8.1	6.9	4.3	4.5	2.9	3.0	1.7	2.2	1.1	8.5
0.0 m	13.5	8.1	6.9	4.4	4.6	2.7	2.8	1.5	2.2	1.1	8.3
-1.5 m	13.8	7.4	6.9	4.0	4.1	2.3	2.6	1.3	2.4	1.2	7.8
-3.0 m	13.5	7.2	6.4	3.6	3.8	2.0			2.9	1.5	6.9
-4.5 m	12.9	6.7	6.1	3.3					5.3	2.9	4.9

Blade rear / down

Height	Reach										
	3.0 m		4.5 m		6.0 m		7.5 m		max		
	Front	Side	Front	Side	Front	Side	Front	Side	Front	Side	
7.5 m					3.6*	3.3			3.2*	3.1	6.2
6.0 m					4.8*	3.4			2.9*	2.2	7.3
4.5 m			6.0*	5.3	5.0*	3.4	4.4*	2.1	2.9*	1.7	8.0
3.0 m	13.0*	9.5	7.6*	5.1	5.9*	3.3	5.0*	2.0	3.0*	1.4	8.4
1.5 m	13.7*	9.1	9.7*	4.9	6.7*	3.2	5.4*	1.9	3.3*	1.3	8.5
0.0 m	15.6*	9.1	11.1*	4.9	7.6*	3.1	5.5	1.8	3.8*	1.3	8.3
-1.5 m	18.2*	8.6	11.3*	4.6	7.9	2.7	5.3	1.6	4.7*	1.5	7.8
-3.0 m	19.2*	8.4	11.6*	4.2	7.9	2.4			5.9*	1.8	6.9
-4.5 m	17.9*	7.8	9.6*	3.9					8.1*	3.4	4.9

Dipperstick: 2 900 mm

Blade rear / up

Height	Reach										
	3.0 m		4.5 m		6.0 m		7.5 m		max		
	Front	Side	Front	Side	Front	Side	Front	Side	Front	Side	
7.5 m					3.9*	3.0			2.8*	2.5	6.6
6.0 m					4.4*	3.1	3.1*	1.8	2.5*	1.7	7.7
4.5 m			5.5*	4.8	4.6	3.0	3.2	1.9	2.4	1.3	8.3
3.0 m	11.7*	8.4	7.0	4.5	4.5	2.9	3.1	1.8	2.2	1.1	8.7
1.5 m	13.1	8.0	6.9	4.3	4.4	2.8	3.0	1.7	2.0	1.0	8.8
0.0 m	13.2	7.9	6.8	4.2	4.5	2.7	2.8	1.5	2.1	1.0	8.6
-1.5 m	13.7	7.5	6.9	4.0	4.2	2.4	2.6	1.3	2.2	1.1	8.1
-3.0 m	13.4	7.1	6.5	3.7	3.8	2.1			2.7	1.3	7.3
-4.5 m	12.9	6.7	6.0	3.3					4.2	2.3	5.5

Blade rear / down

Height	Reach										
	3.0 m		4.5 m		6.0 m		7.5 m		max		
	Front	Side	Front	Side	Front	Side	Front	Side	Front	Side	
7.5 m					3.9*	3.4			2.8*	2.8*	6.6
6.0 m					4.4*	3.5	3.1*	2.1	2.5*	2.0	7.7
4.5 m			5.5*	5.3	4.9*	3.4	4.4*	2.1	2.5*	1.5	8.3
3.0 m	11.7*	9.5	7.2*	5.1	5.6*	3.2	4.7*	2.1	2.6*	1.3	8.7
1.5 m	13.1*	9.0	9.2*	4.8	6.4*	3.2	5.2*	2.0	2.8*	1.2	8.8
0.0 m	15.2*	8.9	10.7*	4.8	7.4*	3.1	5.5	1.8	3.2*	1.2	8.6
-1.5 m	17.6*	8.6	11.2*	4.6	7.8	2.8	5.3	1.6	3.9*	1.3	8.1
-3.0 m	18.9*	8.3	11.4*	4.2	8.0	2.4			5.4*	1.6	7.3
-4.5 m	19.0*	7.9	10.6*	3.8					7.0*	2.7	5.5

As per ISO 10567 the specified values represent 75% of the static tipping load or 87% of the hydraulic lift capacity. (*) Limited by hydraulic system.

Triple articulation - Lifting capacity

Two stabilisers Dipperstick: 2 300 mm

Stabilisers rear / up

Height	Reach										
	3.0 m		4.5 m		6.0 m		7.5 m		max		
	Front	Side	Front	Side	Front	Side	Front	Side	Front	Side	
7.5 m									3.8 *	3.1	5.9
6.0 m					4.9	3.1			3.4 *	2.1	7.1
4.5 m			6.5 *	4.8	4.8	3.1	3.2	1.8	2.9	1.6	7.8
3.0 m	12.0 *	8.5	7.2	4.6	4.7	3.0	3.2	1.8	2.5	1.4	8.2
1.5 m	13.6 *	8.2	7.1	4.5	4.7	3.0	3.0	1.7	2.4	1.2	8.3
0.0 m	14.0	8.2	7.1	4.5	4.6	2.7	2.9	1.5	2.5	1.2	8.1
-1.5 m	14.2	7.6	7.1	4.1	4.2	2.4	2.7	1.4	2.7	1.4	7.6
-3.0 m	14.0	7.4	6.6	3.7	4.0	2.1			3.3	1.8	6.6
-4.5 m	13.4	6.9							7.3	4.0	4.2

Stabilisers rear / down

Height	Reach										
	3.0 m		4.5 m		6.0 m		7.5 m		max		
	Front	Side	Front	Side	Front	Side	Front	Side	Front	Side	
7.5 m									3.8 *	3.8 *	5.9
6.0 m					5.1 *	4.2			3.4 *	3.0	7.1
4.5 m			6.5 *	6.5	5.3 *	4.1	4.4 *	2.6	3.2 *	2.4	7.8
3.0 m	12.0 *	11.9	8.1 *	6.3	6.1 *	4.1	5.2	2.6	3.2 *	2.1	8.2
1.5 m	13.6 *	11.6	10.1 *	6.1	7.0 *	4.0	5.2	2.5	3.5 *	1.9	8.3
0.0 m	16.0 *	11.7	11.2 *	6.2	7.4	3.8	5.0	2.3	4.3 *	2.0	8.1
-1.5 m	18.7 *	11.5	11.4 *	5.9	7.5	3.5	4.9	2.2	4.8	2.2	7.6
-3.0 m	19.4 *	11.3	11.9 *	5.4	7.2	3.2			6.0	2.7	6.6
-4.5 m	16.4 *	10.7							9.9 *	6.0	4.2

Dipperstick: 2 600 mm

Stabilisers rear / up

Height	Reach										
	3.0 m		4.5 m		6.0 m		7.5 m		max		
	Front	Side	Front	Side	Front	Side	Front	Side	Front	Side	
7.5 m					3.6 *	3.0			3.2 *	2.9	6.2
6.0 m					4.8 *	3.1			2.9 *	2.0	7.3
4.5 m			6.0 *	4.9	4.8	3.1	3.2	1.9	2.7	1.5	8.0
3.0 m	13.0 *	8.5 *	7.3	4.6	4.7	3.0	3.2	1.8	2.4	1.3	8.4
1.5 m	13.7	8.3	7.1	4.5	4.6	2.9	3.1	1.7	2.3	1.2	8.5
0.0 m	13.8	8.2	7.1	4.5	4.7	2.8	2.9	1.6	2.3	1.2	8.3
-1.5 m	14.3	7.6	7.1	4.1	4.3	2.4	2.7	1.4	2.5	1.3	7.8
-3.0 m	13.9	7.4	6.7	3.7	3.9	2.1			3.1	1.6	6.9
-4.5 m	13.3	6.9	6.3	3.4					5.5	3.0	4.9

Stabilisers rear / down

Height	Reach										
	3.0 m		4.5 m		6.0 m		7.5 m		max		
	Front	Side	Front	Side	Front	Side	Front	Side	Front	Side	
7.5 m					3.6 *	3.6 *			3.2 *	3.2 *	6.2
6.0 m					4.8 *	4.2			2.9 *	2.8	7.3
4.5 m			6.0 *	6.0 *	5.0 *	4.1	4.4 *	2.7	2.9 *	2.2	8.0
3.0 m	13.0 *	11.9	7.6 *	6.2	5.9 *	4.0	5.0 *	2.6	3.0 *	2.0	8.4
1.5 m	13.7 *	11.5	9.7 *	6.0	6.7 *	4.0	5.2	2.5	3.3 *	1.8	8.5
0.0 m	15.6 *	11.5	11.1 *	6.0	7.3	3.9	5.1	2.4	3.8 *	1.8	8.3
-1.5 m	18.2 *	11.5	11.3 *	5.9	7.5	3.5	4.9	2.2	4.6	2.0	7.8
-3.0 m	19.2 *	11.2	11.6 *	5.5	7.2	3.2			5.6	2.5	6.9
-4.5 m	17.9 *	10.6	9.6 *	5.1					8.1 *	4.5	4.9

Dipperstick: 2 900 mm

Stabilisers rear / up

Height	Reach										
	3.0 m		4.5 m		6.0 m		7.5 m		max		
	Front	Side	Front	Side	Front	Side	Front	Side	Front	Side	
7.5 m					3.9 *	3.1			2.8 *	2.5	6.6
6.0 m					4.4 *	3.2	3.1 *	1.9	2.5 *	1.8	7.7
4.5 m			5.5 *	4.9	4.8	3.1	3.3	1.9	2.5 *	1.4	8.3
3.0 m	11.7 *	8.6	7.2	4.6	4.7	2.9	3.2	1.9	2.3	1.2	8.7
1.5 m	13.1 *	8.2	7.0	4.5	4.6	2.9	3.1	1.8	2.1	1.1	8.8
0.0 m	13.7	8.1	7.0 *	4.4	4.6	2.8	2.9	1.6	2.2	1.0	8.6
-1.5 m	14.0	7.6	7.1	4.1	4.4	2.5	2.7	1.4	2.3	1.1	8.1
-3.0 m	13.9	7.3	6.7	3.8	4.0	2.1			2.8	1.4	7.3
-4.5 m	13.4	6.9	6.3	3.4					4.4	2.3	5.5

Stabilisers rear / down

Height	Reach										
	3.0 m		4.5 m		6.0 m		7.5 m		max		
	Front	Side	Front	Side	Front	Side	Front	Side	Front	Side	
7.5 m					3.9 *	3.9 *			2.8 *	2.8 *	6.6
6.0 m					4.4 *	4.2	3.1 *	2.7	2.5 *	2.5 *	7.7
4.5 m			5.5 *	5.5 *	4.9 *	4.1	4.4 *	2.7	2.5 *	2.1	8.3
3.0 m	11.7 *	11.7 *	7.2 *	6.2	5.6 *	4.0	4.7 *	2.7	2.6 *	1.8	8.7
1.5 m	13.1 *	11.5	9.2 *	6.0	6.4 *	3.9	5.1	2.6	2.8 *	1.7	8.8
0.0 m	15.2 *	11.5	10.7 *	6.0	7.2	4.0	5.1	2.4	3.2 *	1.7	8.6
-1.5 m	17.6 *	11.5	11.2 *	5.9	7.4	3.6	4.9	2.2	3.9 *	1.8	8.1
-3.0 m	18.9 *	11.2	11.4 *	5.5	7.2	3.2			5.1	2.2	7.3
-4.5 m	19.0 *	10.7	10.6 *	5.1					7.0 *	3.6	5.5

Triple articulation - Lifting capacity

Blade - Two stabilisers Dipperstick: 2 300 mm

Blade rear / stabilisers up

Height	Reach										
	3.0 m		4.5 m		6.0 m		7.5 m		max		
	Front	Side	Front	Side	Front	Side	Front	Side	Front	Side	Reach
7.5 m									3.8 *	3.2	5.9
6.0 m					4.8	3.2			3.4 *	2.1	7.1
4.5 m			6.5 *	5.0	4.8	3.2	3.1	1.9	2.8	1.7	7.8
3.0 m	12.0 *	8.7	7.2	4.8	4.6	3.1	3.1	1.9	2.5	1.4	8.2
1.5 m	13.6 *	8.4	7.0	4.6	4.6	3.1	3.0	1.8	2.4	1.3	8.3
0.0 m	13.8	8.4	7.1	4.6	4.5	2.8	2.8	1.6	2.4	1.3	8.1
-1.5 m	14.0	7.8	7.0	4.2	4.2	2.5	2.7	1.5	2.6	1.4	7.6
-3.0 m	13.8	7.6	6.5	3.8	3.9	2.2			3.3	1.8	6.6
-4.5 m	13.2	7.2							7.2	4.2	4.2

Blade rear / stabilisers down

Height	Reach														
	3.0 m		4.5 m		6.0 m		7.5 m		max						
	Front	Side	Front	Side	Front	Side	Front	Side	Front	Side	Reach				
7.5 m											3.8 *	3.8 *	5.9		
6.0 m									5.1 *	5.1 *			3.4 *	3.4 *	7.1
4.5 m			6.5 *	6.5 *	5.3 *	5.2	4.4 *	3.5	3.2 *	3.1	7.8				
3.0 m	12.0 *	12.0 *	8.1 *	7.9	6.1 *	5.1	5.2 *	3.4	3.2 *	2.8	8.2				
1.5 m	13.6 *	13.6 *	10.1 *	7.8	7.0 *	5.0	5.7 *	3.3	3.5 *	2.7	8.3				
0.0 m	16.0 *	15.5	11.2 *	7.8	7.8 *	5.0	6.1 *	3.2	4.3 *	2.7	8.1				
-1.5 m	18.7 *	15.9	11.4 *	7.8	8.1 *	4.7	5.4 *	3.0	5.3 *	3.0	7.6				
-3.0 m	19.4 *	16.0	11.9 *	7.3	7.7 *	4.4			6.0 *	3.7	6.6				
-4.5 m	16.4 *	15.3							9.9 *	8.2	4.2				

Dipperstick: 2 600 mm

Blade rear / stabilisers up

Height	Reach										
	3.0 m		4.5 m		6.0 m		7.5 m		max		
	Front	Side	Front	Side	Front	Side	Front	Side	Front	Side	Reach
7.5 m					3.6 *	3.1			3.2 *	3.0	6.2
6.0 m					4.8 *	3.2			2.9 *	2.0	7.3
4.5 m			6.0 *	5.0	4.7	3.1	3.2	1.9	2.7	1.6	8.0
3.0 m	13.0 *	8.7	7.2	4.7	4.6	3.1	3.1	1.9	2.4	1.3	8.4
1.5 m	13.6	8.4 *	7.0	4.6	4.6	3.0	3.0	1.8	2.2	1.2	8.5
0.0 m	13.7	8.3	7.0	4.6	4.6	2.9	2.8	1.6	2.3	1.2	8.3
-1.5 m	14.1	7.8	7.0	4.2	4.2	2.5	2.7	1.5	2.5	1.3	7.8
-3.0 m	13.7	7.6	6.6	3.9	3.9	2.2			3.0	1.7	6.9
-4.5 m	13.1	7.1	6.2	3.6					5.4	3.1	4.9

Blade rear / stabilisers down

Height	Reach										
	3.0 m		4.5 m		6.0 m		7.5 m		max		
	Front	Side	Front	Side	Front	Side	Front	Side	Front	Side	Reach
7.5 m					3.6 *	3.6 *			3.2 *	3.2 *	6.2
6.0 m					4.8 *	4.8 *			2.9 *	2.9 *	7.3
4.5 m			6.0 *	6.0 *	5.0 *	5.0 *	4.4 *	3.5	2.9 *	2.9 *	8.0
3.0 m	13.0 *	13.0 *	7.6 *	7.6 *	5.9 *	5.0	5.0 *	3.5	3.0 *	2.7	8.4
1.5 m	13.7 *	13.7 *	9.7 *	7.7	6.7 *	5.0	5.4 *	3.4	3.3 *	2.5	8.5
0.0 m	15.6 *	15.4	11.1 *	7.7	7.6 *	5.0	5.9 *	3.2	3.8 *	2.6	8.3
-1.5 m	18.2 *	15.8	11.3 *	7.8	8.0 *	4.7	5.8 *	3.0	4.7 *	2.8	7.8
-3.0 m	19.2 *	15.9	11.6 *	7.4	8.0 *	4.3			5.9 *	3.4	6.9
-4.5 m	17.9 *	15.3	9.6 *	7.0					8.1 *	6.1	4.9

Dipperstick: 2 900 mm

Blade rear / stabilisers up

Height	Reach										
	3.0 m		4.5 m		6.0 m		7.5 m		max		
	Front	Side	Front	Side	Front	Side	Front	Side	Front	Side	Reach
7.5 m					3.9 *	3.2			2.8 *	2.6	6.6
6.0 m					4.4 *	3.2	3.1 *	2.0	2.5 *	1.8	7.7
4.5 m			5.5 *	5.0	4.7	3.1	3.2	2.0	2.5	1.4	8.3
3.0 m	11.7 *	8.9	7.2	4.7	4.6	3.0	3.2	2.0	2.2	1.2	8.7
1.5 m	13.1 *	8.4	7.0	4.6	4.5	3.0	3.1	1.8	2.1	1.1	8.8
0.0 m	13.5	8.3	6.9	4.5	4.5	2.9	2.9	1.7	2.1	1.1	8.6
-1.5 m	13.8	7.9	7.0	4.2	4.3	2.6	2.7	1.5	2.3	1.2	8.1
-3.0 m	13.7	7.5	6.6	3.9	3.9	2.2			2.7	1.5	7.3
-4.5 m	13.2	7.1	6.2	3.5					4.3	2.4	5.5

Blade rear / stabilisers down

Height	Reach										
	3.0 m		4.5 m		6.0 m		7.5 m		max		
	Front	Side	Front	Side	Front	Side	Front	Side	Front	Side	Reach
7.5 m					3.9 *	3.9 *			2.8 *	2.8 *	6.6
6.0 m					4.4 *	4.4 *	3.1 *	3.1 *	2.5 *	2.5 *	7.7
4.5 m			5.5 *	5.5 *	4.9 *	4.9 *	4.4 *	3.5	2.5 *	2.5 *	8.3
3.0 m	11.7 *	11.7 *	7.2 *	7.2 *	5.6 *	5.0	4.7 *	3.5	2.6 *	2.5	8.7
1.5 m	13.1 *	13.1 *	9.2 *	7.7	6.4 *	4.9	5.2 *	3.4	2.8 *	2.4	8.8
0.0 m	15.2 *	15.2 *	10.7 *	7.6	7.4 *	5.0	5.8 *	3.2	3.2 *	2.4	8.6
-1.5 m	17.6 *	15.6	11.2 *	7.8	7.9 *	4.8	6.0 *	3.0	3.9 *	2.6	8.1
-3.0 m	18.9 *	15.9	11.4 *	7.5	8.1 *	4.4			5.4 *	3.1	7.3
-4.5 m	19.0 *	15.3	10.6 *	7.0					7.0 *	4.9	5.5

Triple articulation - Lifting capacity

Four stabilisers Dipperstick: 2 300 mm

4 stabilisers / up

Height	Reach										
	3.0 m		4.5 m		6.0 m		7.5 m		max		
	Front	Side	Front	Side	Front	Side	Front	Side	Front	Side	
7.5 m									3.8*	3.3	5.9
6.0 m					4.9	3.3			3.4*	2.2	7.1
4.5 m			6.5*	5.1	4.8	3.2	3.2	1.9	2.9	1.7	7.8
3.0 m	12.0*	8.9	7.2	4.9	4.7	3.2	3.2	1.9	2.5	1.5	8.2
1.5 m	13.6*	8.6	7.1	4.7	4.7	3.1	3.0	1.8	2.4	1.3	8.3
0.0 m	14.0	8.6	7.1	4.7	4.6	2.9	2.9	1.7	2.5	1.4	8.1
-1.5 m	14.2	8.0	7.1	4.3	4.2	2.5	2.7	1.5	2.7	1.5	7.6
-3.0 m	14.0	7.8	6.6	3.9	4.0	2.3			3.3	1.9	6.6
-4.5 m	13.4	7.3							7.3	4.3	4.2

4 stabilisers / down

Height	Reach												
	3.0 m		4.5 m		6.0 m		7.5 m		max				
	Front	Side	Front	Side	Front	Side	Front	Side	Front	Side			
7.5 m									3.8*	3.8*	5.9		
6.0 m							5.1*	5.1*			3.4*	3.4*	7.1
4.5 m			6.5*	6.5*	5.3*	5.3*	4.4*	4.3	3.2*	3.2*	7.8		
3.0 m	12.0*	12.0*	8.1*	8.1*	6.1*	6.1*	5.2*	4.3	3.2*	3.2*	8.2		
1.5 m	13.6*	13.6*	10.1*	9.5	7.0*	6.1	5.7*	4.2	3.5*	3.4	8.3		
0.0 m	16.0*	16.0*	11.2*	9.5	7.8*	6.2	6.1*	4.0	4.3*	3.5	8.1		
-1.5 m	18.7*	18.7*	11.4*	9.8	8.1*	5.9	5.4*	3.9	5.3*	3.8	7.6		
-3.0 m	19.4*	19.4*	11.9*	9.5	7.7*	5.6			6.0*	4.7	6.6		
-4.5 m	16.4*	16.4*							9.9*	9.9*	4.2		

Dipperstick: 2 600 mm

4 stabilisers / up

Height	Reach										
	3.0 m		4.5 m		6.0 m		7.5 m		max		
	Front	Side	Front	Side	Front	Side	Front	Side	Front	Side	
7.5 m					3.6*	3.2			3.2*	3.0	6.2
6.0 m					4.8*	3.3			2.9*	2.1	7.3
4.5 m			6.0*	5.1	4.8	3.2	3.2	2.0	2.7	1.6	8.0
3.0 m	13.0*	8.9	7.3	4.8	4.7	3.1	3.2	2.0	2.4	1.4	8.4
1.5 m	13.7	8.5	7.1	4.7	4.6	3.1	3.1	1.8	2.3	1.3	8.5
0.0 m	13.8	8.5	7.1	4.7	4.7	3.0	2.9	1.7	2.3	1.3	8.3
-1.5 m	14.3	8.0	7.1	4.3	4.3	2.5	2.7	1.5	2.5	1.4	7.8
-3.0 m	13.9	7.7	6.7	3.9	3.9	2.3			3.1	1.7	6.9
-4.5 m	13.3	7.2	6.3	3.7					5.5	3.2	4.9

4 stabilisers / down

Height	Reach										
	3.0 m		4.5 m		6.0 m		7.5 m		max		
	Front	Side	Front	Side	Front	Side	Front	Side	Front	Side	
7.5 m					3.6*	3.6*			3.2*	3.2*	6.2
6.0 m					4.8*	4.8*			2.9*	2.9*	7.3
4.5 m			6.0*	6.0*	5.0*	5.0*	4.4*	4.4	2.9*	2.9*	8.0
3.0 m	13.0*	13.0*	7.6*	7.6*	5.9*	5.9*	5.0*	4.3	3.0*	3.0*	8.4
1.5 m	13.7*	13.7*	9.7*	9.5	6.7*	6.1	5.4*	4.2	3.3*	3.3	8.5
0.0 m	15.6*	15.6*	11.1*	9.5	7.6*	6.1	5.9*	4.1	3.8*	3.3	8.3
-1.5 m	18.2*	18.2*	11.3*	9.7	8.0*	5.9	5.8*	3.9	4.7*	3.6	7.8
-3.0 m	19.2*	19.2*	11.6*	9.6	8.0*	5.6			5.9*	4.4	6.9
-4.5 m	17.9*	17.9*	9.6*	9.2					8.1*	7.9	4.9

Dipperstick: 2 900 mm

4 stabilisers / up

Height	Reach										
	3.0 m		4.5 m		6.0 m		7.5 m		max		
	Front	Side	Front	Side	Front	Side	Front	Side	Front	Side	
7.5 m					3.9*	3.3			2.8*	2.7	6.6
6.0 m					4.4*	3.3	3.1*	2.0	2.5*	1.9	7.7
4.5 m			5.5*	5.1	4.8	3.2	3.3	2.1	2.5*	1.5	8.3
3.0 m	11.7*	9.0	7.2	4.8	4.7	3.1	3.2	2.0	2.3	1.3	8.7
1.5 m	13.1*	8.5	7.0	4.7	4.6	3.0	3.1	1.9	2.1	1.1	8.8
0.0 m	13.7	8.4	7.0*	4.6	4.6	3.0	2.9	1.7	2.2	1.1	8.6
-1.5 m	14.0	8.0	7.1	4.3	4.4	2.6	2.7	1.5	2.3	1.2	8.1
-3.0 m	13.9	7.7	6.7	4.0	4.0	2.3			2.8	1.5	7.3
-4.5 m	13.4	7.3	6.3	3.6					4.4	2.5	5.5

4 stabilisers / down

Height	Reach										
	3.0 m		4.5 m		6.0 m		7.5 m		max		
	Front	Side	Front	Side	Front	Side	Front	Side	Front	Side	
7.5 m					3.9*	3.9*			2.8*	2.8*	6.6
6.0 m					4.4*	4.4*	3.1*	3.1*	2.5*	2.5*	7.7
4.5 m			5.5*	5.5*	4.9*	4.9*	4.4*	4.4	2.5*	2.5*	8.3
3.0 m	11.7*	11.7*	7.2*	7.2*	5.6*	5.6*	4.7*	4.3	2.6*	2.6*	8.7
1.5 m	13.1*	13.1*	9.2*	9.2*	6.4*	6.0	5.2*	4.3	2.8*	2.8*	8.8
0.0 m	15.2*	15.2*	10.7*	9.4	7.4*	6.0	5.8*	4.1	3.2*	3.1	8.6
-1.5 m	17.6*	17.6*	11.2*	9.6	7.9*	6.0	6.0	3.9	3.9*	3.4	8.1
-3.0 m	18.9*	18.9*	11.4*	9.7	8.1*	5.7			5.4*	4.0	7.3
-4.5 m	19.0*	19.0*	10.6*	9.2					7.0*	6.3	5.5

As per ISO 10567 the specified values represent 75% of the static tipping load or 87% of the hydraulic lift capacity. (*) Limited by hydraulic system.

One piece boom - Lifting capacity

Blade Dipperstick: 2 300 mm

Blade rear / up

Height	Reach								
	3.0 m		4.5 m		6.0 m		7.5 m		max
	Front	Side	Front	Side	Front	Side	Front	Side	Reach
7.5 m					3.9*	2.9			3.6* 2.8 6.1
6.0 m					4.7	2.9			3.2 1.9 7.3
4.5 m			7.0*	4.5	4.5	2.7	3.0	1.7	2.6 1.5 8.0
3.0 m			6.6	3.8	4.2	2.4	2.8	1.6	2.3 1.2 8.4
1.5 m			6.0	3.3	3.9	2.1	2.7	1.4	2.2 1.1 8.4
0.0 m			5.7	3.0	3.7	2.0	2.6	1.3	2.2 1.1 8.2
-1.5 m	9.8*	5.7	5.6	2.9	3.6	1.9	2.5	1.3	2.4 1.2 7.7
-3.0 m	11.8	5.9	5.7	3.0	3.6	1.9			3.0 1.6 6.8
-4.5 m			5.9	3.2					4.5 2.5 5.3

Blade rear / down

Height	Reach								
	3.0 m		4.5 m		6.0 m		7.5 m		max
	Front	Side	Front	Side	Front	Side	Front	Side	Reach
7.5 m					3.9*	3.2			3.6* 3.2 6.1
6.0 m					5.3*	3.2			3.4* 2.2 7.3
4.5 m			7.0*	5.0	5.8*	3.0	5.2*	2.0	3.3* 1.7 8.0
3.0 m			9.0*	4.4	6.7*	2.8	5.5	1.8	3.5* 1.5 8.4
1.5 m			10.7*	3.8	7.5*	2.5	5.3	1.7	3.9* 1.3 8.4
0.0 m			11.3*	3.5	7.6	2.3	5.2	1.6	4.5 1.3 8.2
-1.5 m	9.8*	6.8	10.9*	3.5	7.5	2.2	5.1	1.6	4.9 1.5 7.7
-3.0 m	13.4*	7.0	9.6*	3.5	7.0*	2.2			5.7* 1.9 6.8
-4.5 m			6.9*	3.8					5.4* 2.9 5.3

Dipperstick: 2 600 mm

Blade rear / up

Height	Reach								
	3.0 m		4.5 m		6.0 m		7.5 m		max
	Front	Side	Front	Side	Front	Side	Front	Side	Reach
7.5 m					3.9*	2.9			3.1* 2.6 6.3
6.0 m					4.7	2.9			2.9* 1.8 7.5
4.5 m			6.5*	4.5	4.5	2.7	3.0	1.7	2.5 1.4 8.2
3.0 m			6.7	3.9	4.2	2.4	2.8	1.6	2.2 1.2 8.5
1.5 m			6.0	3.3	3.9	2.1	2.7	1.4	2.1 1.0 8.6
0.0 m	6.1*	5.5	5.6	3.0	3.6	1.9	2.5	1.3	2.1 1.0 8.4
-1.5 m	9.8*	5.6	5.5	2.9	3.5	1.8	2.5	1.2	2.3 1.1 7.9
-3.0 m	11.6	5.7	5.6	2.9	3.5	1.8			2.8 1.4 7.1
-4.5 m	10.5*	6.1	5.8	3.1					4.1 2.2 5.6

Blade rear / down

Height	Reach								
	3.0 m		4.5 m		6.0 m		7.5 m		max
	Front	Side	Front	Side	Front	Side	Front	Side	Reach
7.5 m					3.9*	3.3			3.1* 3.0 6.3
6.0 m					4.9*	3.3			2.9* 2.0 7.5
4.5 m			6.5*	5.1	5.5*	3.1	5.0*	2.0	2.9* 1.6 8.2
3.0 m			8.5*	4.5	6.4*	2.8	5.4*	1.8	3.1* 1.4 8.5
1.5 m			10.4*	3.9	7.3*	2.5	5.3	1.7	3.4* 1.3 8.6
0.0 m	6.1*	6.1*	11.2*	3.5	7.6	2.3	5.2	1.6	4.0* 1.3 8.4
-1.5 m	9.8*	6.7	11.0*	3.4	7.4	2.2	5.1	1.5	4.7 1.4 7.9
-3.0 m	14.2*	6.8	9.9*	3.4	7.1*	2.2			5.6 1.7 7.1
-4.5 m	10.5*	7.2	7.5*	3.6					5.6* 2.6 5.6

Dipperstick: 2 900 mm

Blade rear / up

Height	Reach								
	3.0 m		4.5 m		6.0 m		7.5 m		max
	Front	Side	Front	Side	Front	Side	Front	Side	Reach
7.5 m					4.0*	3.0			2.7* 2.3 6.7
6.0 m					4.6*	2.9	3.1	1.8	2.5* 1.6 7.8
4.5 m					4.5	2.7	3.0	1.7	2.3 1.3 8.5
3.0 m	13.3*	7.4	6.8	4.0	4.2	2.4	2.8	1.6	2.1 1.0 8.8
1.5 m			6.1	3.4	3.9	2.1	2.7	1.4	1.9 0.9 8.9
0.0 m	6.3*	5.5	5.6	3.0	3.6	1.9	2.5	1.3	1.9 0.9 8.7
-1.5 m	9.3*	5.5	5.5	2.8	3.5	1.8	2.4	1.2	2.1 1.0 8.2
-3.0 m	11.4	5.6	5.5	2.8	3.5	1.8			2.5 1.2 7.4
-4.5 m	11.5*	5.9	5.7	3.0	3.6	1.9			3.5 1.9 6.1

Blade rear / down

Height	Reach								
	3.0 m		4.5 m		6.0 m		7.5 m		max
	Front	Side	Front	Side	Front	Side	Front	Side	Reach
7.5 m					4.0*	3.4			2.7* 2.6 6.7
6.0 m					4.6*	3.3	3.3*	2.1	2.5* 1.9 7.8
4.5 m					5.2*	3.1	4.7*	2.0	2.5* 1.5 8.5
3.0 m	13.3*	8.6	8.0*	4.5	6.1*	2.8	5.2*	1.8	2.7* 1.3 8.8
1.5 m			10.0*	3.9	7.1*	2.5	5.3	1.7	2.9* 1.1 8.9
0.0 m	6.3*	6.3*	11.0*	3.5	7.6	2.2	5.1	1.5	3.4* 1.1 8.7
-1.5 m	9.3*	6.5	11.0*	3.3	7.4	2.1	5.0	1.5	4.2* 1.2 8.2
-3.0 m	13.5*	6.7	10.1*	3.3	7.3*	2.1			5.2 1.5 7.4
-4.5 m	11.5*	7.0	8.0*	3.5	5.6*	2.2			5.4* 2.2 6.1

As per ISO 10567 the specified values represent 75% of the static tipping load or 87% of the hydraulic lift capacity. (*) Limited by hydraulic system.

One piece boom - Lifting capacity

Two stabilisers Dipperstick: 2 300 mm

Stabilisers rear / up

Height	Reach										
	3.0 m		4.5 m		6.0 m		7.5 m		max		
	Front	Side	Front	Side	Front	Side	Front	Side	Front	Side	
7.5 m					3.9*	3.0			3.6*	2.9	6.1
6.0 m					4.8	3.0			3.4	2.0	7.3
4.5 m			7.0*	4.6	4.6	2.8	3.1	1.8	2.7	1.5	8.0
3.0 m			6.8	4.0	4.3	2.5	3.0	1.6	2.4	1.3	8.4
1.5 m			6.2	3.4	4.0	2.2	2.8	1.5	2.3	1.2	8.4
0.0 m			5.9	3.1	3.8	2.0	2.7	1.4	2.3	1.2	8.2
-1.5 m	9.8*	5.9	5.8	3.1	3.7	2.0	2.7	1.4	2.5	1.3	7.7
-3.0 m	12.2	6.1	5.9	3.1	3.8	2.0			3.1	1.6	6.8
-4.5 m			6.1	3.3					4.7	2.6	5.3

Stabilisers rear / down

Height	Reach										
	3.0 m		4.5 m		6.0 m		7.5 m		max		
	Front	Side	Front	Side	Front	Side	Front	Side	Front	Side	
7.5 m					3.9*	3.9*			3.6*	3.6*	6.1
6.0 m					5.3*	4.1			3.4*	2.8	7.3
4.5 m			7.0*	6.3	5.8*	3.9	5.2	2.5	3.3*	2.2	8.0
3.0 m			9.0*	5.7	6.7*	3.6	5.1	2.4	3.5*	2.0	8.4
1.5 m			10.7*	5.1	7.2	3.3	4.9	2.3	3.9*	1.8	8.4
0.0 m			11.3*	4.8	6.9	3.1	4.8	2.2	4.1	1.9	8.2
-1.5 m	9.8*	9.4	10.9*	4.7	6.8	3.0	4.7	2.1	4.5	2.0	7.7
-3.0 m	13.4*	9.6	9.6*	4.7	6.9	3.0			5.6	2.5	6.8
-4.5 m			6.9*	5.0					5.4*	3.8	5.3

Dipperstick: 2 600 mm

Stabilisers rear / up

Height	Reach										
	3.0 m		4.5 m		6.0 m		7.5 m		max		
	Front	Side	Front	Side	Front	Side	Front	Side	Front	Side	
7.5 m					3.9*	3.0			3.1*	2.7	6.3
6.0 m					4.9	3.0			2.9*	1.8	7.5
4.5 m			6.5*	4.7	4.6	2.8	3.1	1.8	2.6	1.4	8.2
3.0 m			6.9	4.0	4.3	2.5	3.0	1.6	2.3	1.2	8.5
1.5 m			6.3	3.4	4.0	2.2	2.8	1.5	2.2	1.1	8.6
0.0 m	6.1*	5.7	5.9	3.1	3.8	2.0	2.7	1.4	2.2	1.1	8.4
-1.5 m	9.8*	5.8	5.8	3.0	3.7	1.9	2.6	1.3	2.4	1.2	7.9
-3.0 m	12.0	5.9	5.8	3.0	3.7	1.9			2.9	1.5	7.1
-4.5 m	10.5*	6.3	6.0	3.2					4.2	2.3	5.6

Stabilisers rear / down

Height	Reach										
	3.0 m		4.5 m		6.0 m		7.5 m		max		
	Front	Side	Front	Side	Front	Side	Front	Side	Front	Side	
7.5 m					3.9*	3.9*			3.1*	3.1*	6.3
6.0 m					4.9*	4.1			2.9*	2.6	7.5
4.5 m			6.5*	6.4	5.5*	3.9	5.0*	2.6	2.9*	2.1	8.2
3.0 m			8.5*	5.7	6.4*	3.6	5.1	2.4	3.1*	1.9	8.5
1.5 m			10.4*	5.1	7.2	3.3	4.9	2.3	3.4*	1.7	8.6
0.0 m	6.1*	6.1*	11.2*	4.7	6.9	3.1	4.8	2.1	3.9	1.7	8.4
-1.5 m	9.8*	9.3	11.0*	4.6	6.8	2.9	4.7	2.1	4.3	1.9	7.9
-3.0 m	14.2*	9.5	9.9*	4.7	6.8	3.0			5.2	2.3	7.1
-4.5 m	10.5*	9.8	7.5*	4.9					5.6*	3.4	5.6

Dipperstick: 2 900 mm

Stabilisers rear / up

Height	Reach										
	3.0 m		4.5 m		6.0 m		7.5 m		max		
	Front	Side	Front	Side	Front	Side	Front	Side	Front	Side	
7.5 m					4.0*	3.1			2.7*	2.4	6.7
6.0 m					4.6*	3.0	3.2	1.9	2.5*	1.7	7.8
4.5 m					4.7	2.8	3.1	1.8	2.4	1.3	8.5
3.0 m	13.3*	7.6	7.0	4.1	4.4	2.5	3.0	1.6	2.2	1.1	8.8
1.5 m			6.3	3.5	4.0	2.2	2.8	1.5	2.0	1.0	8.9
0.0 m	6.3*	5.7	5.9	3.1	3.8	2.0	2.6	1.3	2.0	1.0	8.7
-1.5 m	9.3*	5.7	5.7	2.9	3.6	1.9	2.6	1.3	2.2	1.1	8.2
-3.0 m	11.8	5.8	5.7	2.9	3.6	1.8			2.6	1.3	7.4
-4.5 m	11.5*	6.1	5.9	3.1	3.7	2.0			3.7	1.9	6.1

Stabilisers rear / down

Height	Reach										
	3.0 m		4.5 m		6.0 m		7.5 m		max		
	Front	Side	Front	Side	Front	Side	Front	Side	Front	Side	
7.5 m					4.0*	4.0*			2.7*	2.7*	6.7
6.0 m					4.6*	4.1	3.3*	2.7	2.5*	2.4	7.8
4.5 m					5.2*	3.9	4.7*	2.6	2.5*	2.0	8.5
3.0 m	13.3*	11.4	8.0*	5.8	6.1*	3.6	5.1	2.4	2.7*	1.7	8.8
1.5 m			10.0*	5.1	7.1*	3.3	4.9	2.2	2.9*	1.6	8.9
0.0 m	6.3*	6.3*	11.0*	4.7	6.9	3.0	4.7	2.1	3.4*	1.6	8.7
-1.5 m	9.3*	9.1	11.0*	4.6	6.7	2.9	4.6	2.0	4.0	1.7	8.2
-3.0 m	13.5*	9.3	10.1*	4.6	6.7	2.9			4.8	2.1	7.4
-4.5 m	11.5*	9.6	8.0*	4.7	5.6*	3.0			5.4*	3.0	6.1

One piece boom - Lifting capacity

Blade - Two stabilisers Dipperstick: 2 300 mm

Blade rear / stabilisers up

Height	Reach										
	3.0 m		4.5 m		6.0 m		7.5 m		max		
	Front	Side	Front	Side	Front	Side	Front	Side	Front	Side	
7.5 m					3.9*	3.0			3.6*	3.0	6.1
6.0 m					4.7	3.0			3.3	2.0	7.3
4.5 m			7.0*	4.7	4.5	2.9	3.0	1.8	2.7	1.6	8.0
3.0 m			6.7	4.1	4.2	2.6	2.9	1.7	2.4	1.3	8.4
1.5 m			6.1	3.5	3.9	2.3	2.8	1.6	2.2	1.2	8.4
0.0 m			5.8	3.2	3.7	2.1	2.6	1.5	2.3	1.2	8.2
-1.5 m	9.8*	6.1	5.7	3.2	3.6	2.0	2.6	1.4	2.5	1.4	7.7
-3.0 m	12.0	6.3	5.8	3.2	3.7	2.1			3.1	1.7	6.8
-4.5 m			6.0	3.5					4.6	2.7	5.3

Blade rear / stabilisers down

Height	Reach										
	3.0 m		4.5 m		6.0 m		7.5 m		max		
	Front	Side	Front	Side	Front	Side	Front	Side	Front	Side	
7.5 m					3.9*	3.9*			3.6*	3.6*	6.1
6.0 m					5.3*	5.2			3.4*	3.4*	7.3
4.5 m			7.0*	7.0*	5.8*	5.0	5.2*	3.4	3.3*	3.0	8.0
3.0 m			9.0*	7.5	6.7*	4.7	5.6*	3.2	3.5*	2.6	8.4
1.5 m			10.7*	6.9	7.5*	4.4	5.9*	3.1	3.9*	2.5	8.4
0.0 m			11.3*	6.6	8.0*	4.2	6.1	3.0	4.5*	2.6	8.2
-1.5 m	9.8*	9.8*	10.9*	6.5	7.9*	4.1	5.9*	2.9	5.6*	2.8	7.7
-3.0 m	13.4*	13.4*	9.6*	6.6	7.0*	4.1			5.7*	3.4	6.8
-4.5 m			6.9*	6.8					5.4*	5.2	5.3

Dipperstick: 2 600 mm

Blade rear / stabilisers up

Height	Reach										
	3.0 m		4.5 m		6.0 m		7.5 m		max		
	Front	Side	Front	Side	Front	Side	Front	Side	Front	Side	
7.5 m					3.9*	3.1			3.1*	2.8	6.3
6.0 m					4.8	3.1			2.9*	1.9	7.5
4.5 m			6.5*	4.8	4.6	2.9	3.0	1.8	2.6	1.5	8.2
3.0 m			6.8	4.1	4.3	2.6	2.9	1.7	2.3	1.3	8.5
1.5 m			6.1	3.6	3.9	2.3	2.7	1.6	2.1	1.2	8.6
0.0 m	6.1*	6.0	5.8	3.2	3.7	2.1	2.6	1.4	2.2	1.1	8.4
-1.5 m	9.8*	6.0	5.6	3.1	3.6	2.0	2.5	1.4	2.3	1.3	7.9
-3.0 m	11.8	6.2	5.7	3.1	3.6	2.0			2.8	1.6	7.1
-4.5 m	10.5*	6.5	5.9	3.3					4.2	2.4	5.6

Blade rear / stabilisers down

Height	Reach										
	3.0 m		4.5 m		6.0 m		7.5 m		max		
	Front	Side	Front	Side	Front	Side	Front	Side	Front	Side	
7.5 m					3.9*	3.9*			3.1*	3.1*	6.3
6.0 m					4.9*	4.9*			2.9*	2.9*	7.5
4.5 m			6.5*	6.5*	5.5*	5.1	5.0*	3.4	2.9*	2.8	8.2
3.0 m			8.5*	7.6	6.4*	4.7	5.4*	3.2	3.1*	2.5	8.5
1.5 m			10.4*	6.9	7.3*	4.4	5.8*	3.1	3.4*	2.4	8.6
0.0 m	6.1*	6.1*	11.2*	6.5	7.9*	4.2	6.1	2.9	4.0*	2.4	8.4
-1.5 m	9.8*	9.8*	11.0*	6.4	7.9*	4.1	5.9*	2.9	5.1*	2.6	7.9
-3.0 m	14.2*	13.8	9.9*	6.5	7.1*	4.1			5.6*	3.2	7.1
-4.5 m	10.5*	10.5*	7.5*	6.7					5.6*	4.7	5.6

Dipperstick: 2 900 mm

Blade rear / stabilisers up

Height	Reach										
	3.0 m		4.5 m		6.0 m		7.5 m		max		
	Front	Side	Front	Side	Front	Side	Front	Side	Front	Side	
7.5 m					4.0*	3.2			2.7*	2.5	6.7
6.0 m					4.6*	3.1	3.1	1.9	2.5*	1.7	7.8
4.5 m					4.6	2.9	3.1	1.8	2.4	1.4	8.5
3.0 m	13.3*	7.8	6.9	4.2	4.3	2.6	2.9	1.7	2.1	1.2	8.8
1.5 m			6.2	3.6	3.9	2.3	2.7	1.5	2.0	1.0	8.9
0.0 m	6.3*	5.9	5.8	3.2	3.7	2.1	2.6	1.4	2.0	1.0	8.7
-1.5 m	9.3*	5.9	5.6	3.1	3.6	1.9	2.5	1.3	2.2	1.1	8.2
-3.0 m	11.6	6.0	5.6	3.1	3.5	1.9			2.6	1.4	7.4
-4.5 m	11.5*	6.3	5.8	3.2	3.7	2.1			3.6	2.0	6.1

Blade rear / stabilisers down

Height	Reach										
	3.0 m		4.5 m		6.0 m		7.5 m		max		
	Front	Side	Front	Side	Front	Side	Front	Side	Front	Side	
7.5 m					4.0*	4.0*			2.7*	2.7*	6.7
6.0 m					4.6*	4.6*	3.3*	3.3*	2.5*	2.5*	7.8
4.5 m					5.2*	5.1	4.7*	3.4	2.5*	2.5*	8.5
3.0 m	13.3*	13.3*	8.0*	7.7	6.1*	4.8	5.2*	3.2	2.7*	2.4	8.8
1.5 m			10.0*	7.0	7.1*	4.4	5.6*	3.0	2.9*	2.2	8.9
0.0 m	6.3*	6.3*	11.0*	6.5	7.7*	4.1	5.9*	2.9	3.4*	2.3	8.7
-1.5 m	9.3*	9.3*	11.0*	6.4	7.8*	4.0	5.9	2.8	4.2*	2.4	8.2
-3.0 m	13.5*	13.5	10.1*	6.4	7.3*	4.0			5.4*	2.9	7.4
-4.5 m	11.5*	11.5*	8.0*	6.5	5.6*	4.1			5.4*	4.1	6.1

As per ISO 10567 the specified values represent 75% of the static tipping load or 87% of the hydraulic lift capacity. (*) Limited by hydraulic system.

One piece boom - Lifting capacity

Four stabilisers Dipperstick: 2 300 mm

4 stabilisers / up

Height	Reach										
	3.0 m		4.5 m		6.0 m		7.5 m		max		
	Front	Side	Front	Side	Front	Side	Front	Side	Front	Side	
7.5 m					3.9*	3.1			3.6*	3.0	6.1
6.0 m					4.8	3.1			3.4	2.1	7.3
4.5 m			7.0*	4.8	4.6	2.9	3.1	1.9	2.7	1.6	8.0
3.0 m			6.8	4.2	4.3	2.6	3.0	1.8	2.4	1.4	8.4
1.5 m			6.2	3.6	4.0	2.4	2.8	1.6	2.3	1.3	8.4
0.0 m			5.9	3.3	3.8	2.2	2.7	1.5	2.3	1.3	8.2
-1.5 m	9.8*	6.3	5.8	3.3	3.7	2.1	2.7	1.5	2.5	1.4	7.7
-3.0 m	12.2	6.5	5.9	3.3	3.8	2.1			3.1	1.8	6.8
-4.5 m			6.1	3.5					4.7	2.8	5.3

4 stabilisers / down

Height	Reach										
	3.0 m		4.5 m		6.0 m		7.5 m		max		
	Front	Side	Front	Side	Front	Side	Front	Side	Front	Side	
7.5 m					3.9*	3.9*			3.6*	3.6*	6.1
6.0 m					5.3*	5.3*			3.4*	3.4*	7.3
4.5 m			7.0*	7.0*	5.8*	5.8*	5.2*	4.2	3.3*	3.3*	8.0
3.0 m			9.0*	9.0*	6.7*	6.0	5.6*	4.1	3.5*	3.4	8.4
1.5 m			10.7*	9.0	7.5*	5.6	5.9*	3.9	3.9*	3.2	8.4
0.0 m			11.3*	8.7	8.0*	5.4	6.0	3.8	4.5*	3.3	8.2
-1.5 m	9.8*	9.8*	10.9*	8.6	7.9*	5.3	5.9	3.8	5.6*	3.6	7.7
-3.0 m	13.4*	13.4*	9.6*	8.7	7.0*	5.4			5.7*	4.4	6.8
-4.5 m			6.9*	6.9*					5.4*	5.4*	5.3

Dipperstick: 2 600 mm

4 stabilisers / up

Height	Reach										
	3.0 m		4.5 m		6.0 m		7.5 m		max		
	Front	Side	Front	Side	Front	Side	Front	Side	Front	Side	
7.5 m					3.9*	3.2			3.1*	2.8	6.3
6.0 m					4.9	3.1			2.9*	2.0	7.5
4.5 m			6.5*	4.9	4.6	2.9	3.1	1.9	2.6	1.5	8.2
3.0 m			6.9	4.2	4.3	2.7	3.0	1.8	2.3	1.3	8.5
1.5 m			6.3	3.6	4.0	2.4	2.8	1.6	2.2	1.2	8.6
0.0 m	6.1*	6.1	5.9	3.3	3.8	2.2	2.7	1.5	2.2	1.2	8.4
-1.5 m	9.8*	6.2	5.8	3.2	3.7	2.1	2.6	1.4	2.4	1.3	7.9
-3.0 m	12.0	6.3	5.8	3.2	3.7	2.1			2.9	1.6	7.1
-4.5 m	10.5*	6.6	6.0	3.4					4.2	2.4	5.6

4 stabilisers / down

Height	Reach										
	3.0 m		4.5 m		6.0 m		7.5 m		max		
	Front	Side	Front	Side	Front	Side	Front	Side	Front	Side	
7.5 m					3.9*	3.9*			3.1*	3.1*	6.3
6.0 m					4.9*	4.9*			2.9*	2.9*	7.5
4.5 m			6.5*	6.5*	5.5*	5.5*	5.0*	4.3	2.9*	2.9*	8.2
3.0 m			8.5*	8.5*	6.4*	6.0	5.4*	4.1	3.1*	3.1*	8.5
1.5 m			10.4*	9.1	7.3*	5.7	5.8*	3.9	3.4*	3.1	8.6
0.0 m	6.1*	6.1*	11.2*	8.6	7.9*	5.4	6.0	3.8	4.0*	3.2	8.4
-1.5 m	9.8*	9.8*	11.0*	8.5	7.9*	5.3	5.9	3.7	5.1*	3.4	7.9
-3.0 m	14.2*	14.2*	9.9*	8.6	7.1*	5.3			5.6*	4.1	7.1
-4.5 m	10.5*	10.5*	7.5*	7.5*					5.6*	5.6*	5.6

Dipperstick: 2 900 mm

4 stabilisers / up

Height	Reach										
	3.0 m		4.5 m		6.0 m		7.5 m		max		
	Front	Side	Front	Side	Front	Side	Front	Side	Front	Side	
7.5 m					4.0*	3.2			2.7*	2.5	6.7
6.0 m					4.6*	3.2	3.2	2.0	2.5*	1.8	7.8
4.5 m					4.7	3.0	3.1	1.9	2.4	1.4	8.5
3.0 m	13.3*	8.0	7.0	4.3	4.4	2.7	3.0	1.7	2.2	1.2	8.8
1.5 m			6.3	3.7	4.0	2.4	2.8	1.6	2.0	1.1	8.9
0.0 m	6.3*	6.0	5.9	3.3	3.8	2.1	2.6	1.5	2.0	1.1	8.7
-1.5 m	9.3*	6.0	5.7	3.1	3.6	2.0	2.6	1.4	2.2	1.2	8.2
-3.0 m	11.9	6.2	5.7	3.2	3.6	2.0			2.6	1.4	7.4
-4.5 m	11.5*	6.5	5.9	3.3	3.8	2.1			3.7	2.1	6.1

4 stabilisers / down

Height	Reach										
	3.0 m		4.5 m		6.0 m		7.5 m		max		
	Front	Side	Front	Side	Front	Side	Front	Side	Front	Side	
7.5 m					4.0*	4.0*			2.7*	2.7*	6.7
6.0 m					4.6*	4.6*	3.3*	3.3*	2.5*	2.5*	7.8
4.5 m					5.2*	5.2*	4.7*	4.3	2.5*	2.5*	8.5
3.0 m	13.3*	13.3*	8.0*	8.0*	6.1*	6.0	5.2*	4.1	2.7*	2.7*	8.8*
1.5 m			10.0*	9.1	7.1*	5.7	5.6*	3.9	2.9*	2.9	8.9
0.0 m	6.3*	6.3*	11.0*	8.6	7.7*	5.4	5.9	3.8	3.4*	2.9	8.7
-1.5 m	9.3*	9.3*	11.0*	8.4	7.8*	5.2	5.8	3.7	4.2*	3.2	8.2
-3.0 m	13.5*	13.5*	10.1*	8.5	7.3*	5.2			5.4*	3.8	7.4
-4.5 m	11.5*	11.5*	8.0*	8.0*	5.6*	5.4			5.4*	5.3	6.1