

VOLVO WHEEL LOADERS
ROCK, BANK AND
STOCKPILE LOADING



VOLVO

The Volvo wheel loaders puts its teeth in the rock



With Automatic Power Shift II, the operator can adjust the gear-shifting points according to the hardness of the work and save fuel.

Fully-floating AWB axles for longer life.

Dual-circuit brake system with fully protected, wet, circulation-cooled disk brakes increases safety.

Fingertip-operated working hydraulics make it easier for the operator to break loose and fill the bucket.

Volvo TP Linkage provides excellent breakout force at ground level and throughout the bucket movement.

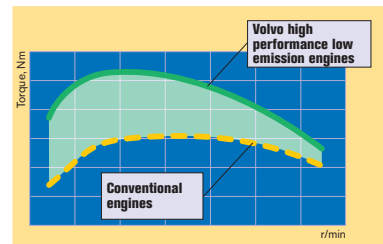
The Volvo wheel loaders with the Volvo L330D at the top represents Volvo's definite breakthrough in rock handling. The Volvo wheel loader has the breakout force, the durability and the weight required in quarries and hard banks. Rugged front frame, all-cast attachment points, fully-floating axles and fully enclosed, wheel-mounted brakes enable the machines to withstand the stresses in tough jobs.

High penetration capacity in rock is the result of well-matched, Volvo-developed drivetrains with Volvo high-performance low-emission engines and the operator-friendly APS II automatic power shift system with four shifting modes. Properly equipped with genuine bucket, Volvo can challenge much larger wheel loaders, thanks to its superior speed, operator comfort and total economy.



- ROPS/FOPS-approved Volvo Care Cab II offers a working environment with unmatched comfort and outstanding all-round visibility. Rubber anti-vibration mountings and generous insulation make the Care Cab II vibration-damped and quiet.
- Rugged front frame with all-cast attachment points.
- Long Boom (option) increases the lift height by up to 570 mm.

More tonnes per hour with high-performance engine and APS II
 New systems for fuel injection and charge air cooling give Volvo high-performance low-emissions engines more efficient combustion and extremely good low-rev characteristics. Faster acceleration and increased rimpull reduce cycle times and increase penetration capacity in rock and hard banks. APS II with variable shifting points, economy mode and heavy-duty mode reduces running costs and increases the productivity of the wheel loaders in loading from stockpiles, breaking-out in banks and breaking-out blasted material.



Volvo high-performance low-emission engines have considerably higher torque at low engine speeds than conventional engines. Maximum torque at only 900–1200 rpm means more strength and acceleration. The engines meet all current exhaust emission requirements.



The Volvo L330D has Z-bar linkage and heavy-duty axles and frames that make it well-suited for tough rock handling. Limited-slip differentials, load-sensing hydraulics and the high-performance low-emission engine's high torque at low engine speeds give the loader the lowest fuel consumption in its class.

Fast troubleshooting, simple service and good support
 Fast troubleshooting, simple service and good support give the operator more time for productive work. The built-in service-friendliness of Volvo wheel loaders in the form of easily accessible service points, large engine covers held open by gas struts and swing-out radiator reduce down time. The Contronic monitoring system provides reminders of recurrent



service and a special S-Contronic module facilitates troubleshooting and diagnosis by the service technician. Moreover, The Volvo Construction Equipment Product Support organization offers service and maintenance contracts with genuine spare parts and replacement components for those who want to get the highest possible productivity and the best total economy out of their Volvo wheel loaders.

More tonnes per hour

The key is a full bucket and fast work cycles











TP Linkage holds the load in an iron grip

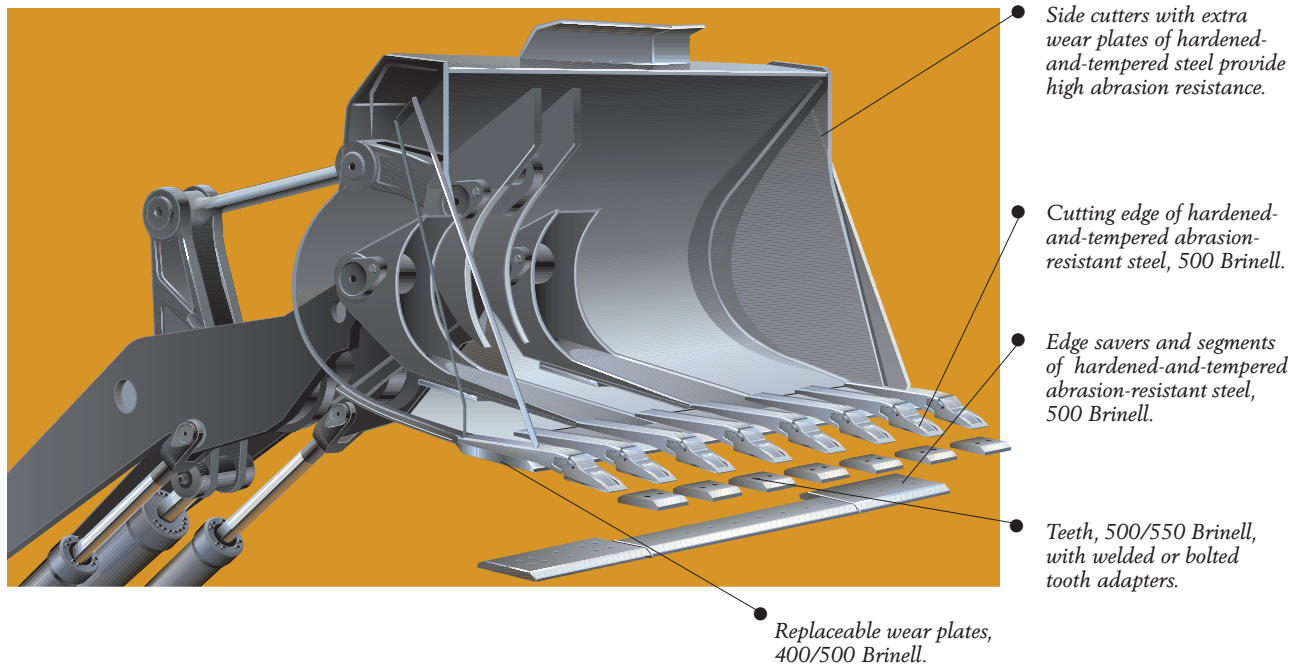
In intensive production loading, TP Linkage displays its superior strength throughout the lifting range. The short distance between the centre of gravity of the load and the front axle increases stability. In the carry position, the bucket is angled backward against the mechanical stop and the opening is parallel to the ground. This permits greater bucket filling and less spillage. With the optional Boom Suspension System, the operator can work even faster in load-carry work, especially on uneven surfaces.



TECHNICAL DATA

								
VOLVO	L50D	L70D	L90D	L120D	L150D	L180D	L220D	L330D
Weight	8,2-9,4	10,9-12,2	14,9-16,7	18,4-20,6	23,2-25,5	26-29	30,5-33,0	48,5-52,0
Bucket volume, m ³	1,2-3,9	1,6-5,0	2,2-7,0	3,0-9,5	3,5-12,0	4,2-14,0	4,5-14,0	6,1-13,5
Tipping load at full turn, kg	5 220	7 240	9 240	12 310	15 240	18 410	19 040	31 490
Output SAE net, kW	74	91	113	148	186	206	257	366
Breakout force, kN	69,8	97,6	114	159,1	180,4	210,3	236,3	458,2
with bucket, m ³	1,2	1,6	2,2	3,0	3,7	4,2	4,6	6,9 (standard version)

Volvo genuine buckets for rocks, hard banks and stockpiles



A bucket that isn't optimally matched to the wheel loader and the material to be loaded is inefficient and can lead to increased wear.

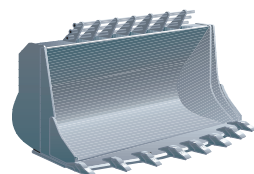
Volvo genuine buckets, on the other hand, are built for and have the same quality as our wheel loaders. This guarantees you full control over bucket and load. As the machine manufacturer, we have

access to all the necessary data to design attachments that do full justice to the wheel loader's performance and productivity.

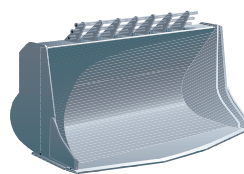
It's really obvious when you think about it. Machines and attachments that are made for each other work best together.

BUCKETS FOR ROCK HANDLING

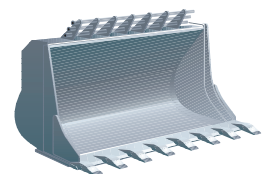
Volvo	Volume
L120D	3,0–3,1 m ³
L150D	3,5–3,8 m ³
L180D	3,9–4,3 m ³
L220D	4,5 m ³
L330D	6,1–7,5 m ³



Spade nose rock bucket with teeth.
For breaking-out hard and stony material and shot rock.



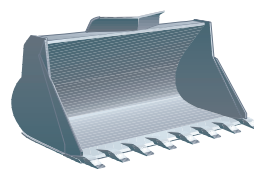
Spade nose rock bucket.
For finely shot rock, ore and other materials that require high penetration and breakout capacity.



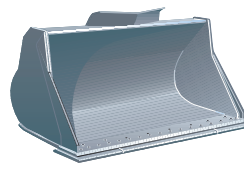
Straight rock bucket with teeth.
For shot rock and other materials that require high penetration and breakout capacity. The bucket has low-cut sides to improve its penetration capacity.

BUCKETS FOR BANK LOADING AND LOADING FROM STOCKPILES

Volvo	Volume
L120D	2,6–3,6 m ³
L150D	3,5–4,2 m ³
L180D	4,2–4,8 m ³
L220D	4,6–5,6 m ³
L330D	6,9–12,7 m ³



Straight bucket with teeth.
For banks, sand, gravel and other materials that require good penetration capacity.



Straight bucket with edge savers.
For loading from stockpiles.

See data sheet and attachment catalogue for more detailed information.



Technology on Human Terms

The Volvo Construction Equipment Group is one of the world's leading manufacturers of construction machines, with a product range encompassing wheel loaders, excavators, articulated haulers, motor graders and more.

The tasks they face vary considerably, but they all share one vital feature: technology which helps man to perform better: safely, efficiently and with care of the environment. We refer to it as Technology on Human Terms.

The sheer width of the product range means it is always possible to choose exactly the right machine and attachment for the job. Each machine also comes with the quality, continuity and security which is represented

by the Volvo name. The security of the service and parts organisation. The security of always having immediate access to leading-edge research and technical development. A machine from Volvo meets the very highest demands in all kinds of jobs, under all conditions. The world over.

The Volvo Construction Equipment Group develops, manufactures and markets Volvo and Champion construction equipment. We are a Volvo company with production facilities on four continents and a market presence in over 100 countries.

For more information please visit our web site:
www.volvo.com

Under our policy of continuous improvement, we reserve the right to change specifications and design without prior notice. The illustrations do not necessarily show the standard version of the machine.

VOLVO

**Volvo Construction
Equipment Group**

Ref. No. 21 1 669 2342 English
Printed in Sweden 2000.09-3 WLO
Volvo Eskilstuna