

KOMATSU®

PW400MH-6

NET HORSEPOWER

228 kW 306 HP

OPERATING WEIGHT

60268 kg 132,831 lb

REACH

16.8 m 55'



**PW
400MH**



ADVANCE®

MATERIAL HANDLER

SPECIFICATIONS



ENGINE

Model Komatsu SA6D125E-2
 Type 4-cycle, water-cooled, direct injection
 Aspiration Turbocharged and aftercooled
 Number of cylinders 6
 Bore 125 mm **4.92"**
 Stroke 150 mm **5.91"**
 Piston displacement 11.04 ltr **674 in³**
 Flywheel horsepower 228 kW **306 HP** @ 2050 rpm
 (SAE J1349)
 Governor All-speed, mechanical



PROPEL AND STEERING SYSTEM

Variable displacement, high torque drive motors with counter-balance valves. Komatsu tilt steering wheel with easy-entry seat accommodations. Foot service brake and parking brake. Easy-touch combination, directional accelerator pedal. Outrigger selection control box, grapple, and generator option switch.



ELECTRICAL OPERATING SYSTEM

Hydraulic-powered 25 kW Baldor DC Generator (100% duty cycle). Hubbell Lifting Magnet Controller (automatic discharge). Switch-selectable grapple or magnet operation.



TIRES

Type. 4-1676 mm x 588 mm **66" x 24"** (ITL) solid tires,
 152 mm **6"** thick rubber bonded to steel rim

Other tires available on a special feature request (SFR) basis.



CHASSIS AND STABILIZERS

Two axle-type carrier, fabricated alloy steel frame with front steering axle trunion mounted with +/- 5 degree oscillation. Front axle includes stabilizer locks. Hydraulic disk-type brakes on front and rear, plus dry disk park-emergency brake on the input side of the rear axle. Hydraulic stabilizers front and rear, independently or simultaneously controlled with heavy-duty pads.



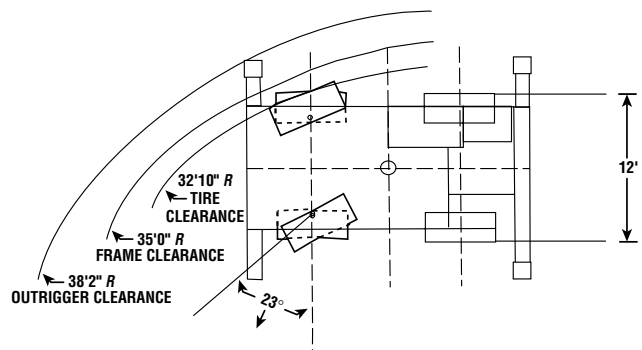
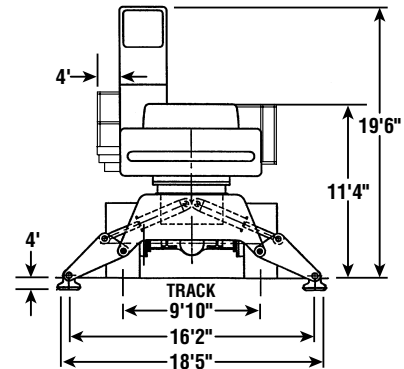
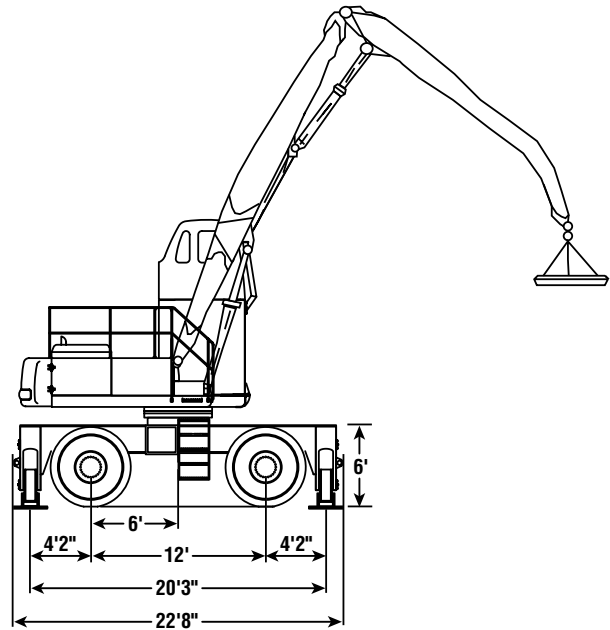
PERFORMANCE

Range speed 9.6 km **0 to 6 mph**
 Tractive effort 22232 kg **49,000 lb**
 Gradeability **5°**



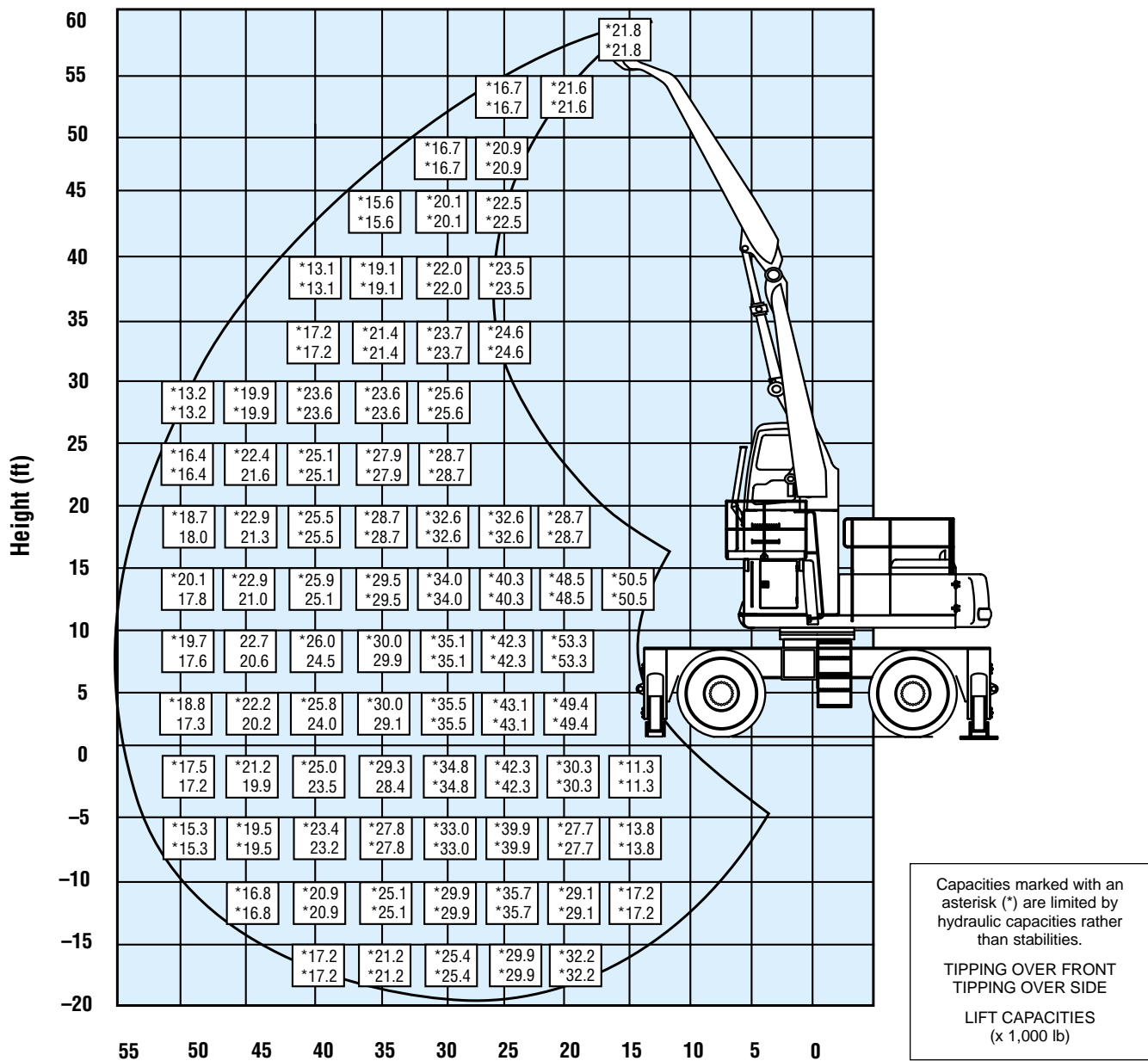
OPERATING WEIGHT

Without grapple 60268 kg **132,831 lb**
 HD4460 carrier 27950 kg **61,600 lb**
 PC400 upper 32582 kg **71,831 lb**



Lift Performance

Young Corporation Two-Piece Front—55'




LIFTING CAPACITY

Capacities are measured at the bare stick tip of the second member.

Capacities marked with an asterisk (*) are limited by hydraulic capacities rather than stabilities. All lift capacities are with outriggers extended.

1. Lifting capacities shown should not be exceeded. Weight of all lifting accessories must be considered part of the load.
2. Lifting capacities shown do not exceed 75% of minimum tipping loads or 87% of hydraulic capacities. Data supplied by AEM.

3. Lifting capacities assume the machine is standing level on a firm, uniform supporting surface. The user must make allowances for unfavorable job conditions such as soft or uneven ground or sudden stopping of loads.
4. The least stable position is over the side.
5. The operator should be fully acquainted with the Operation Manual before operating the machine.
6. Capacities apply only to the machine equipped as stated here.
7. Capacities are based on PCSA gross-rated loads.

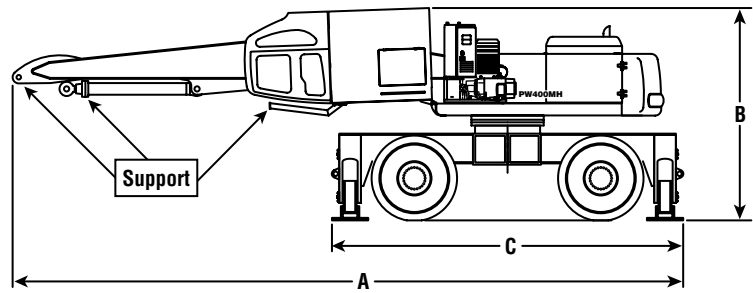


TRANSPORTATION

Main Carrier Transportation Data

Super Load Truck 1

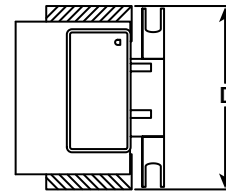
A	Overall length	13157 mm	43'2"
B	Overall height	4166 mm	13'8"
C	Carrier length	6883 mm	22'7"
D	Overall width	3607 mm	11'10"
	Weight	54446 kg	120,000 lb



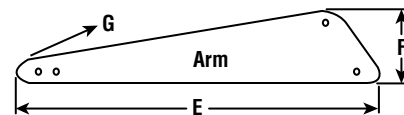
Components of Main Carrier

Standard Truck 2

Note—remove the following:			
Tool			
Arm			
Counterweight			
All removable ladders, steps, and toolbox			
Weight		17695 kg	39,000 lb



E	Overall length	7696 mm	25'3"
F	Arm height	1473 mm	4'10"
G	Arm width	483 mm	1'7"



STANDARD EQUIPMENT

- Air cleaner, double element
- Alternator, 50 A
- Automatic engine warm-up system
- Batteries, 150 Ah/2 x 12 V
- Cab which includes:
 - 1981 mm 78" hinged cab riser
 - AC/heater/defroster
 - ashtray and cigarette lighter
 - hot/cold storage box
 - radio, AM/FM
 - suspension seat
 - tinted safety glass windows
 - viscous mounts
 - window wiper/washer
- Dustproof net for radiator
- Engine overheat prevention system
- Hydraulics, closed-center load sensing (CLSS) HydraMind system
- Inline high pressure hydraulic filter

AESS560-00

©2001 Komatsu Printed in USA

SN2(5M)EH DataKom

2/01 (EV-2)

KOMATSU®

Komatsu America International Company
440 N. Fairway Dr., Vernon Hills, IL 60061