

COMPACT AND POWERFUL. IT'S STREETS AHEAD.

It's never been so tough on the streets. The Roads and Street Works Act has made working on public highways and by-ways more demanding than ever before.

Unless, of course, you're in a JCB 2CX 4x4x4 Streetmaster.

It's been purpose-designed to overcome the potential difficulties of working on the road or pavement. So while the new regulations may pose problems for some, they won't worry anyone in a Streetmaster.

Essentially, it's a compact four wheel steer backhoe loader that's perfect for excavation, loading, reinstatement, compacting and cleaning jobs.

Remarkable manoeuvrability helps make it exceptionally quick and efficient. And for a compact 5.2 tonne machine, it certainly packs some punch with its performance.

In fact, wherever space is at a premium, the 2CX 4x4x4 Streetmaster is streets ahead.

- With its compact size, low operating weight and Street pads to prevent surface damage, the Streetmaster is ideal for working on pavements. It is less of an obstruction on roads, so congestion around the job won't be a problem.
- A powerful 48.5kW (65hp) engine and permanent 4 wheel drive help give the Streetmaster the performance of a larger machine.
- Permanent 4 wheel steer means superb manoeuvrability and helps reduce the turning radius to just 3.03m (9ft. 11in.).
- Extradig extending dipper can extend or retract without breaking the digging cycle for up to 50% faster cycle times.



- Using a 230mm (9in.) bucket, the narrow excavator arm can dig to its full extended dipper length; a depth of 3.50m (11ft. 6in.). This helps keep reinstatement costs down when narrow trenching because there is less damaged surface to repair. A 150mm (6in.) bucket is also available for shallow trenching.
- A highly versatile 6-in-1 shovel, which will dig, load, doze, grade, backfill and grab,

is fitted as standard. An optional side-tip shovel allows the operator to fill a trench parallel to the machine.

- An integral quickhitch on both the excavator and loader ensures fast attachment changeovers for maximum versatility and productivity.
- The Streetmaster has the hydraulic pipework needed to power a JCB Hammermaster 260L road-breaker. A trench compactor can also be quickly fitted for effective trench reinstatement and compaction while a sweeper collector is available for clearing up a site.
- The cab is extremely comfortable, spacious and provides an excellent working environment. The engine has been soundproofed for better operator comfort and less disruption to the local area.
- High road speed of 19.54mph, combined with enough power to easily negotiate gradients, helps cut travelling time to a minimum.

JCB 2CX 4x4x4 STREETMASTER SPECIFICATION

Dimensions

Overall length	4.72m (15ft 6in)
Overall width	1.85m (6ft 1in)
Overall height	2.47m (8ft 1in)
Operating weight	5240kg (11551lb)

Backhoe Performance

Max. dig depth (SAE max.)	3.50m (11ft 10 1/2 in)
Max. reach-ground level (SAE)	5.40m (17ft 8in)
Max. working height	4.68m (15ft 4in)
Max. loadover height	3.63m (11ft 10in)
Bucket rotation (SAE)	190°
Max. bucket tearout (SAE)	3400kgf (7,496lbf)
Max. dipper tearout (SAE)	1800kgf (3,670lbf)

Loader Performance

Dump height	2.52m (8ft 3in)
Loadover height	2.94m (9ft 8in)
Reach at ground (toe plate horizontal)	1.23m (4ft 0in)
Reach at full height - fully dumped	0.60m (2ft 0in)
Dig depth (toe plate horizontal)	0.10m (0ft 4in)
Rollback at ground/carry	45° / 50°
Dump angle (SAE)	45°
Loader breakout - shovel (SAE)	3950kgf (8706lbf)
Maximum hydraulic lift capacity	4480kg (9876lb)
Maximum tipping load	2220kg (4850lb)

Tyres

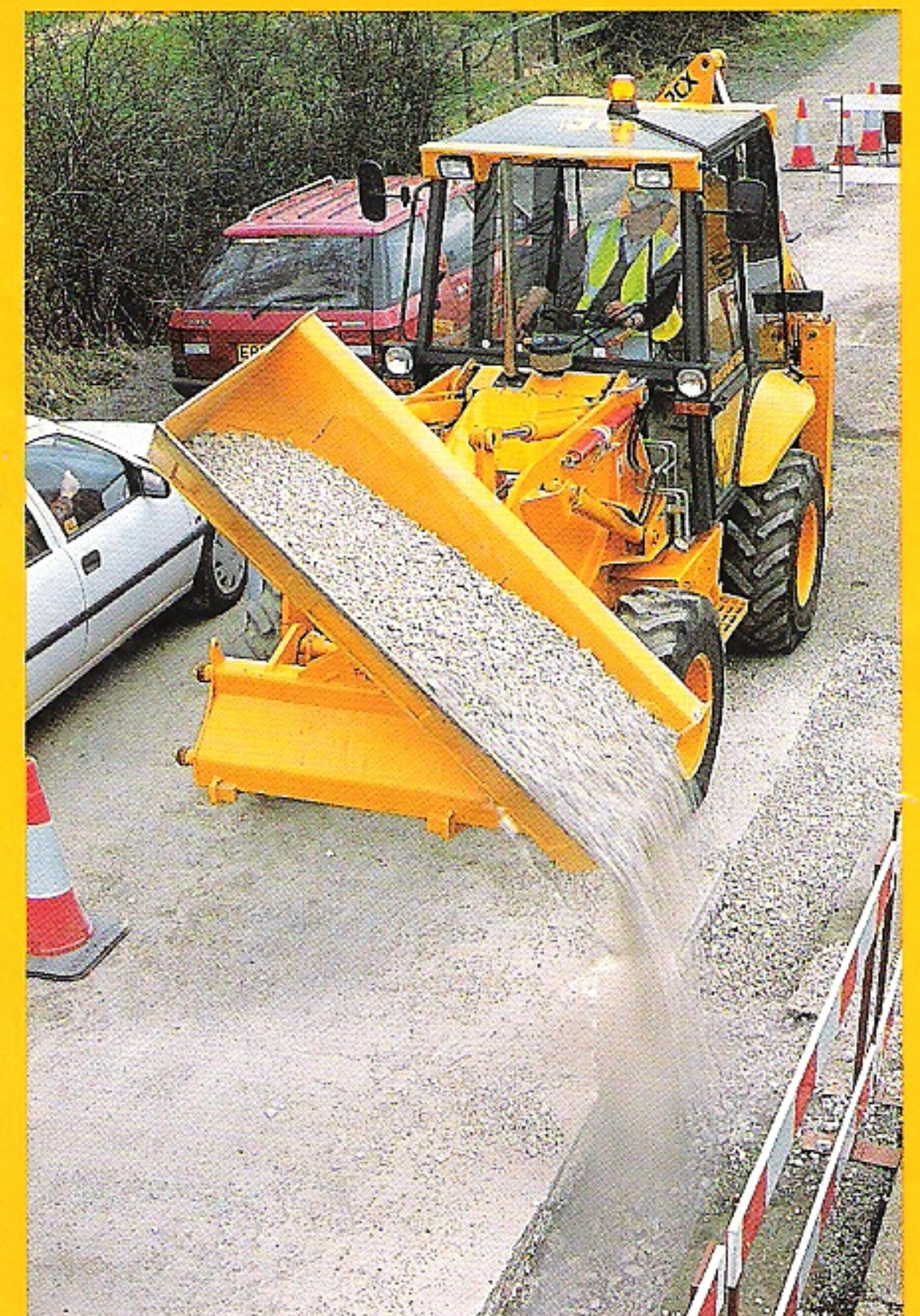
12.5 x 18, 10 PR Industrial traction
335/80 R18 XM27 Radial traction (optional)

Pallet Fork Attachment

Operating Load	1600kg (3526lb)
Operating Load (with optional front axle hydraulic lock)	1800kg (3967lb)

Standard Equipment

Extradig extending dipper.
6-in-1 shovel.
Loader and excavator quickhitches.
Pipework for hammer.
JCB Street pads.
Excavator lifting link with 'D' shackle.
ROPS and FOPS cab with heater.
Twin speaker radio console (less radio)
In cab storage compartment.
Working lights.
Rotating flashing beacon.
Suspension seat.
Seat belt.
Gas strut assisted opening rear window.
Full audible/visual warning lights monitoring oil temperatures and pressures and electrics.
Gauges monitoring:
Engine coolant temperature.
Fuel gauge.
Hourmeter.
Speedometer.
Cab and engine soundproofing (78LpA, 102LwA)
3 loader hydraulic services and pipework.
7 excavator services and foot control.
ISO plus pattern excavator controls.
Exterior mirror.



THE BIGGEST NAME IN COMPACT EQUIPMENT.

JCB Compact Equipment Division, JCB Sales Ltd., Rokeby, Staffordshire ST14 5JP. Telephone: 0889 590312. Fax: 0889 590588.