

2.2 LOAD CHARTS MAIN BOOM WITH MAXILIFT

**GOTTWALD
AK 680-4
14.5 x 14.5 m**

**serial number: 129 141
Sarens machine identification: K407**

**Load Charts
(Euro-Standard)
Main Boom**

**with Maxilift
at 22.5 to 24.0 m radius**

04 045 040/10
 rev. A
 serial number 129 141

Gottwald AK-680-4

serial number: 129 141
 Sarens machine identification: K407

04 045 061

max. wind 17 m/s

MAIN BOOM 37 m with MAXILIFT

Lift ratings in t, for 360° slew range, according EURO Standard
Maxilift mast 43 m, Maxilift radius 22.5 to 24.0 m
Counterweight: upper 206 t; lower 59 t
Outrigger base 14.5 x 14.5 m

| Maxilift ballast | 0 t | 50 t | 100 t | 150 t | 200 t | 250 t | 300 t | 350 t | 400 t | 450 t | 500 t | 550 t | 600 t | |
|------------------|-------|-------|-------|-------|-------|-------|-------|-------|-------|-------|-------|-------|-------|--|
| reeving | 2 x12 | 2 x12 | 2 x12 | 2 x12 | 2 x12 | 2 x12 | 2 x12 | 2 x12 | 2 x12 | 2 x12 | 2 x11 | n.a. | n.a. | |
| radius (m) | | | | | | | | | | | | | | |
| 8 | | | | | | | | | | | | | | |
| 9 | 552 | 647 | 741 | 750 | | | | | | | | | | |
| 10 | 498 | 584 | 669 | 750 | | | | | | | | | | |
| 11 | 453 | 532 | 610 | 687 | 750 | | | | | | | | | |
| 12 | 416 | 488 | 560 | 631 | 703 | 750 | | | | | | | | |
| 13 | 384 | 450 | 517 | 583 | 650 | 717 | 750 | | | | | | | |
| 14 | 356 | 418 | 480 | 542 | 604 | 666 | 728 | 750 | | | | | | |
| 15 | 332 | 390 | 448 | 506 | 564 | 622 | 680 | 739 | | | | | | |
| 16 | 310 | 365 | 420 | 474 | 529 | 583 | 638 | 693 | | | | | | |
| 18 | 275 | 323 | 372 | 421 | 470 | 518 | 567 | 616 | 665 | | | | | |
| 20 | 246 | 290 | 334 | 378 | 422 | 466 | 510 | 554 | 598 | | | | | |
| 22 | 221 | 262 | 303 | 343 | 383 | 423 | 463 | 503 | 543 | 584 | | | | |
| 24 | 201 | 239 | 276 | 313 | 350 | 387 | 424 | 461 | 498 | 535 | | | | |
| 26 | 183 | 220 | 254 | 288 | 322 | 356 | 390 | 425 | 459 | 493 | 527 | | | |
| 28 | 168 | 203 | 235 | 266 | 298 | 330 | 362 | 394 | 425 | 457 | 489 | | | |
| 30 | 155 | 188 | 218 | 248 | 277 | 307 | 337 | 367 | 396 | 426 | 456 | | | |
| 34 | 133 | 164 | 191 | 217 | 244 | 270 | 296 | 322 | 349 | 363 | | | | |
| 38 | | | | | | | | | | | | | | |
| code 2 blocks | | | | | | | | | | | | | | |
| code 1 block | | | | | | | | | | | | | | |
| mast pend. # | 110 | 104 | 96 | 87 | 77 | 68 | 59 | 50 | 41 | 22 | 17 | | | |

= maximum allowed load in 1 mast pendant (t)

04 045 040/11
 rev. A
 serial number 129 141

Gottwald AK-680-4

serial number: 129 141
 Sarens machine identification: K407

04 045 061

max. wind 17 m/s

MAIN BOOM 43 m with MAXILIFT

Lift ratings in t, for 360° slew range, according EURO Standard
Maxilift mast 43 m, Maxilift radius 22.5 to 24.0 m
Counterweight: upper 206 t; lower 59 t
Outrigger base 14.5 x 14.5 m

| Maxilift ballast | 0 t | 50 t | 100 t | 150 t | 200 t | 250 t | 300 t | 350 t | 400 t | 450 t | 500 t | 550 t | 600 t | |
|------------------|-------|-------|-------|-------|-------|-------|-------|-------|-------|-------|-------|-------|-------|--|
| reeving | 2 x10 | 2 x12 | 2 x12 | 2 x12 | 2 x12 | 2 x12 | 2 x12 | 2 x12 | 2 x12 | 2 x12 | 2 x11 | 2 x9 | n.a. | |
| radius (m) | | | | | | | | | | | | | | |
| 8 | | | | | | | | | | | | | | |
| 9 | | | | | | | | | | | | | | |
| 10 | 494 | 580 | 665 | 750 | | | | | | | | | | |
| 11 | 450 | 528 | 606 | 684 | 750 | | | | | | | | | |
| 12 | 412 | 484 | 556 | 627 | 699 | 750 | | | | | | | | |
| 13 | 380 | 446 | 513 | 579 | 646 | 713 | 750 | | | | | | | |
| 14 | 352 | 414 | 476 | 538 | 600 | 662 | 725 | | | | | | | |
| 15 | 328 | 386 | 444 | 502 | 560 | 618 | 677 | 735 | | | | | | |
| 16 | 306 | 361 | 416 | 470 | 525 | 580 | 634 | 689 | | | | | | |
| 18 | 271 | 320 | 368 | 417 | 466 | 515 | 563 | 612 | 661 | | | | | |
| 20 | 242 | 286 | 330 | 374 | 418 | 462 | 506 | 550 | 594 | | | | | |
| 22 | 218 | 259 | 299 | 339 | 379 | 419 | 459 | 500 | 540 | 580 | | | | |
| 24 | 197 | 235 | 272 | 309 | 346 | 383 | 420 | 457 | 494 | 531 | | | | |
| 26 | 179 | 216 | 250 | 284 | 318 | 352 | 387 | 421 | 455 | 489 | | | | |
| 28 | 164 | 199 | 231 | 262 | 294 | 326 | 358 | 390 | 421 | 453 | 485 | | | |
| 30 | 152 | 184 | 214 | 244 | 273 | 303 | 333 | 363 | 392 | 422 | 452 | | | |
| 34 | 129 | 160 | 187 | 213 | 239 | 266 | 292 | 318 | 344 | 371 | 397 | 423 | | |
| 38 | 111 | 140 | 166 | 189 | 213 | 236 | 260 | 283 | 307 | 330 | 353 | | | |
| 42 | | | | | | | | | | | | | | |
| code 2 blocks | | | | | | | | | | | | | | |
| code 1 block | | | | | | | | | | | | | | |
| mast pend. # | 110 | 106 | 98 | 89 | 80 | 71 | 62 | 53 | 44 | 35 | 25 | 11 | | |

= maximum allowed load in 1 mast pendant (t)

04 045 040/12
 rev. A
 serial number 129 141

Gottwald AK-680-4

serial number: 129 141
 Sarens machine identification: K407

04 045 061

max. wind 17 m/s

MAIN BOOM 49 m with MAXILIFT

Lift ratings in t, for 360° slew range, according EURO Standard
Maxilift mast 43 m, Maxilift radius 22.5 to 24.0 m
Counterweight: upper 206 t; lower 59 t
Outrigger base 14.5 x 14.5 m

| Maxilift ballast | 0 t | 50 t | 100 t | 150 t | 200 t | 250 t | 300 t | 350 t | 400 t | 450 t | 500 t | 550 t | 600 t | |
|------------------|------|-------|-------|-------|-------|-------|-------|-------|-------|-------|-------|-------|-------|--|
| reeving | 2 x9 | 2 x11 | 2 x12 | 2 x12 | 2 x12 | 2 x12 | 2 x12 | 2 x12 | 2 x12 | 2 x11 | 2 x10 | 2 x9 | n.a. | |
| radius (m) | | | | | | | | | | | | | | |
| 10 | | | | | | | | | | | | | | |
| 11 | 448 | 527 | 605 | 682 | 750 | | | | | | | | | |
| 12 | 411 | 483 | 555 | 626 | 698 | 750 | | | | | | | | |
| 13 | 379 | 445 | 512 | 578 | 645 | 712 | | | | | | | | |
| 14 | 351 | 413 | 475 | 537 | 599 | 661 | 723 | | | | | | | |
| 15 | 327 | 385 | 443 | 501 | 559 | 617 | 675 | 734 | | | | | | |
| 16 | 305 | 360 | 415 | 469 | 524 | 578 | 633 | 688 | | | | | | |
| 18 | 270 | 318 | 367 | 416 | 465 | 513 | 562 | 611 | | | | | | |
| 20 | 241 | 285 | 329 | 373 | 417 | 461 | 505 | 549 | 593 | | | | | |
| 22 | 216 | 257 | 297 | 337 | 378 | 418 | 458 | 498 | 538 | | | | | |
| 24 | 196 | 234 | 271 | 308 | 345 | 382 | 419 | 456 | 493 | 529 | | | | |
| 26 | 178 | 215 | 249 | 283 | 317 | 351 | 385 | 419 | 454 | 488 | | | | |
| 28 | 163 | 198 | 230 | 261 | 293 | 325 | 357 | 388 | 420 | 452 | 484 | | | |
| 30 | 150 | 183 | 213 | 242 | 272 | 302 | 332 | 361 | 391 | 421 | 450 | | | |
| 34 | 128 | 158 | 185 | 212 | 238 | 264 | 291 | 317 | 343 | 369 | 396 | 422 | | |
| 38 | 110 | 139 | 164 | 187 | 211 | 234 | 258 | 282 | 305 | 329 | 352 | 376 | | |
| 42 | 96 | 123 | 147 | 168 | 189 | 211 | 232 | 253 | 275 | 296 | 317 | 339 | | |
| 46 | 85 | 111 | 132 | 152 | 172 | 191 | 211 | 230 | 250 | 269 | 277 | | | |
| 50 | | | | | | | | | | | | | | |
| 54 | | | | | | | | | | | | | | |
| 58 | | | | | | | | | | | | | | |
| 62 | | | | | | | | | | | | | | |
| 66 | | | | | | | | | | | | | | |
| code 2 blocks | | | | | | | | | | | | | | |
| code 1 block | | | | | | | | | | | | | | |
| mast pend. # | 110 | 108 | 101 | 93 | 84 | 73 | 64 | 55 | 46 | 37 | 28 | 19 | | |

= maximum allowed load in 1 mast pendant (t)

04 045 040/13
 rev. A
 serial number 129 141

Gottwald AK-680-4

serial number: 129 141
 Sarens machine identification: K407

04 045 061

max. wind 14 m/s

MAIN BOOM 55 m with MAXILIFT

Lift ratings in t, for 360° slew range, according EURO Standard
Maxilift mast 43 m, Maxilift radius 22.5 to 24.0 m
Counterweight: upper 206 t; lower 59 t
Outrigger base 14.5 x 14.5 m

| Maxilift ballast | 0 t | 50 t | 100 t | 150 t | 200 t | 250 t | 300 t | 350 t | 400 t | 450 t | 500 t | 550 t | 600 t | | |
|------------------|------|-------|----------------------------------|-------|-------|-------|-------|-------|-------|-------|-------|-------|-------|--|--|
| reeving | 2 x9 | 2 x10 | for reeving options see par. 1.4 | | | | | | | 2 x11 | 2 x10 | 2 x8 | 2 x7 | | |
| radius (m) | | | | | | | | | | | | | | | |
| 10 | | | | | | | | | | | | | | | |
| 11 | | | | | | | | | | | | | | | |
| 12 | 408 | 480 | 551 | 623 | 639 | 750 | | | | | | | | | |
| 13 | 375 | 442 | 509 | 575 | 593 | 709 | 750 | | | | | | | | |
| 14 | 348 | 410 | 472 | 534 | 553 | 658 | 720 | | | | | | | | |
| 15 | 323 | 382 | 440 | 498 | 518 | 614 | 672 | | | | | | | | |
| 16 | 302 | 357 | 411 | 466 | 458 | 575 | 630 | 685 | | | | | | | |
| 18 | 266 | 315 | 364 | 413 | 411 | 510 | 559 | 608 | | | | | | | |
| 20 | 238 | 282 | 326 | 370 | 371 | 458 | 502 | 546 | 590 | | | | | | |
| 22 | 213 | 254 | 294 | 334 | 339 | 415 | 455 | 495 | 535 | | | | | | |
| 24 | 192 | 231 | 268 | 305 | 311 | 378 | 416 | 452 | 489 | 526 | | | | | |
| 26 | 175 | 211 | 246 | 279 | 287 | 348 | 382 | 416 | 450 | 485 | | | | | |
| 28 | 160 | 195 | 226 | 258 | 266 | 321 | 353 | 385 | 417 | 449 | 480 | | | | |
| 30 | 147 | 180 | 210 | 239 | 231 | 298 | 328 | 358 | 388 | 417 | 447 | | | | |
| 34 | 125 | 155 | 182 | 208 | 204 | 261 | 287 | 313 | 340 | 366 | 392 | | | | |
| 38 | 106 | 135 | 160 | 184 | 182 | 231 | 254 | 278 | 302 | 325 | 349 | 372 | | | |
| 42 | 92 | 120 | 143 | 164 | 164 | 207 | 228 | 249 | 271 | 292 | 313 | 335 | | | |
| 46 | 80 | 107 | 128 | 148 | 149 | 187 | 206 | 226 | 246 | 265 | 285 | 304 | 324 | | |
| 50 | 71 | 97 | 116 | 135 | 136 | 171 | 189 | 207 | 225 | 243 | 260 | 270 | | | |
| 54 | | | | | | | | | | | | | | | |
| 58 | | | | | | | | | | | | | | | |
| code 2 blocks | | | | | | | | | | | | | | | |
| code 1 block | | | | | | | | | | | | | | | |
| mast pend. # | 110 | 110 | 103 | 95 | 86 | 77 | 69 | 60 | 51 | 43 | 34 | 16 | 13 | | |

= maximum allowed load in 1 mast pendant (t)

04 045 040/14
rev. A
serial number 129 141

Gottwald AK-680-4

serial number: 129 141
Sarens machine identification: K407

04 045 061

max. wind 14 m/s

MAIN BOOM 61 m with MAXILIFT

Lift ratings in t, for 360° slew range, according EURO Standard
Maxilift mast 43 m, Maxilift radius 22.5 to 24.0 m
Counterweight: upper 206 t; lower 59 t
Outrigger base 14.5 x 14.5 m

| Maxilift ballast | 0 t | 50 t | 100 t | 150 t | 200 t | 250 t | 300 t | 350 t | 400 t | 450 t | 500 t | 550 t | 600 t | | |
|------------------|------|------|----------------------------------|-------|-------|-------|-------|-------|-------|-------|-------|-------|-------|------|--|
| reeving | 2 x8 | 2 x9 | for reeving options see par. 1.4 | | | | | | | | | 2 x9 | 2 x8 | 2 x7 | |
| radius (m) | | | | | | | | | | | | | | | |
| 12 | | | | | | | | | | | | | | | |
| 13 | 373 | 439 | 506 | 572 | 585 | 677 | | | | | | | | | |
| 14 | 345 | 407 | 469 | 531 | 554 | 655 | | | | | | | | | |
| 15 | 321 | 379 | 437 | 495 | 519 | 611 | 669 | | | | | | | | |
| 16 | 299 | 354 | 409 | 463 | 460 | 572 | 627 | | | | | | | | |
| 18 | 263 | 312 | 361 | 410 | 412 | 507 | 556 | 605 | | | | | | | |
| 20 | 235 | 279 | 323 | 367 | 373 | 455 | 499 | 543 | 587 | | | | | | |
| 22 | 211 | 251 | 291 | 331 | 340 | 412 | 452 | 492 | 532 | | | | | | |
| 24 | 190 | 228 | 265 | 302 | 312 | 375 | 413 | 449 | 486 | 523 | | | | | |
| 26 | 172 | 208 | 243 | 276 | 288 | 345 | 379 | 413 | 447 | 481 | | | | | |
| 28 | 157 | 191 | 223 | 255 | 267 | 318 | 350 | 382 | 414 | 446 | | | | | |
| 30 | 144 | 177 | 206 | 236 | 232 | 295 | 325 | 355 | 385 | 414 | 444 | | | | |
| 34 | 122 | 152 | 179 | 205 | 205 | 258 | 284 | 310 | 336 | 363 | 389 | | | | |
| 38 | 103 | 132 | 157 | 181 | 183 | 228 | 251 | 275 | 298 | 322 | 345 | 369 | | | |
| 42 | 89 | 116 | 139 | 161 | 164 | 203 | 225 | 246 | 267 | 289 | 310 | 331 | | | |
| 46 | 77 | 103 | 125 | 144 | 149 | 183 | 203 | 223 | 242 | 262 | 281 | 301 | 320 | | |
| 50 | 67 | 93 | 112 | 131 | 136 | 167 | 185 | 203 | 221 | 239 | 257 | 275 | 293 | | |
| 54 | 59 | 83 | 102 | 120 | 125 | 153 | 169 | 186 | 203 | 220 | 236 | 253 | | | |
| 58 | | | | | | | | | | | | | | | |
| code 2 blocks | | | | | | | | | | | | | | | |
| code 1 block | | | | | | | | | | | | | | | |
| mast pend. # | 110 | 110 | 106 | 97 | 89 | 79 | 70 | 62 | 53 | 45 | 36 | 27 | 15 | | |

= maximum allowed load in 1 mast pendant (t)

04 045 040/15
 rev. A
 serial number 129 141

Gottwald AK-680-4

serial number: 129 141
 Sarens machine identification: K407

04 045 061

max. wind 14 m/s

MAIN BOOM 67 m with MAXILIFT

Lift ratings in t, for 360° slew range, according EURO Standard
Maxilift mast 43 m, Maxilift radius 22.5 to 24.0 m
Counterweight: upper 206 t; lower 59 t
Outrigger base 14.5 x 14.5 m

| Maxilift ballast | 0 t | 50 t | 100 t | 150 t | 200 t | 250 t | 300 t | 350 t | 400 t | 450 t | 500 t | 550 t | 600 t | |
|------------------|------|----------------------------------|-------|-------|-------|-------|-------|-------|-------|-------|-------|-------|-------|--|
| reeving | 2 x7 | for reeving options see par. 1.4 | | | | | | | | | | 2 x8 | 2 x6 | |
| radius (m) | | | | | | | | | | | | | | |
| 12 | | | | | | | | | | | | | | |
| 13 | | | | | | | | | | | | | | |
| 14 | 346 | 408 | 470 | 532 | 501 | 585 | | | | | | | | |
| 15 | 322 | 380 | 438 | 496 | 500 | 585 | | | | | | | | |
| 16 | 300 | 355 | 410 | 464 | 457 | 573 | | | | | | | | |
| 18 | 265 | 313 | 362 | 411 | 409 | 508 | 557 | | | | | | | |
| 20 | 236 | 280 | 324 | 368 | 370 | 456 | 500 | 544 | | | | | | |
| 22 | 212 | 252 | 292 | 332 | 337 | 413 | 453 | 493 | 533 | | | | | |
| 24 | 191 | 229 | 266 | 303 | 309 | 377 | 414 | 451 | 487 | | | | | |
| 26 | 173 | 209 | 244 | 278 | 285 | 346 | 380 | 414 | 448 | 483 | | | | |
| 28 | 158 | 193 | 224 | 256 | 264 | 319 | 351 | 383 | 415 | 447 | | | | |
| 30 | 145 | 178 | 208 | 237 | 229 | 296 | 326 | 356 | 386 | 415 | | | | |
| 34 | 124 | 153 | 180 | 206 | 202 | 259 | 285 | 311 | 337 | 364 | 390 | | | |
| 38 | 105 | 133 | 158 | 181 | 180 | 228 | 252 | 276 | 299 | 323 | 346 | 370 | | |
| 42 | 90 | 117 | 140 | 161 | 162 | 204 | 225 | 247 | 268 | 290 | 311 | 332 | | |
| 46 | 78 | 104 | 125 | 145 | 146 | 184 | 203 | 223 | 243 | 262 | 282 | 301 | | |
| 50 | 68 | 93 | 113 | 131 | 133 | 167 | 185 | 203 | 221 | 239 | 257 | 275 | 293 | |
| 54 | 60 | 84 | 102 | 120 | 122 | 153 | 170 | 186 | 203 | 220 | 236 | 253 | 269 | |
| 58 | 53 | 75 | 93 | 110 | 112 | 141 | 156 | 172 | 187 | 203 | 218 | 234 | 249 | |
| 62 | 47 | 68 | 86 | 101 | 104 | 130 | 145 | 159 | 174 | 188 | 203 | 218 | | |
| 66 | | | | | | | | | | | | | | |
| 70 | | | | | | | | | | | | | | |
| 74 | | | | | | | | | | | | | | |
| code 2 blocks | | | | | | | | | | | | | | |
| code 1 block | | | | | | | | | | | | | | |
| mast pend. # | 110 | 110 | 106 | 98 | 90 | 80 | 72 | 63 | 54 | 45 | 39 | 28 | 19 | |

= maximum allowed load in 1 mast pendant (t)

04 045 040/16
 rev. A
 serial number 129 141

Gottwald AK-680-4

serial number: 129 141
 Sarens machine identification: K407

04 045 061

max. wind 14 m/s

MAIN BOOM 73 m with MAXILIFT

Lift ratings in t, for 360° slew range, according EURO Standard
Maxilift mast 43 m, Maxilift radius 22.5 to 24.0 m
Counterweight: upper 206 t; lower 59 t
Outrigger base 14.5 x 14.5 m

| Maxilift ballast | 0 t | 50 t | 100 t | 150 t | 200 t | 250 t | 300 t | 350 t | 400 t | 450 t | 500 t | 550 t | 600 t | |
|------------------|------|----------------------------------|-------|-------|-------|-------|-------|-------|-------|-------|-------|-------|-------|--|
| reeving | 2 x7 | for reeving options see par. 1.4 | | | | | | | | | | 2 x7 | 2 x6 | |
| radius (m) | | | | | | | | | | | | | | |
| 14 | | | | | | | | | | | | | | |
| 15 | 319 | 377 | 435 | 493 | 501 | | | | | | | | | |
| 16 | 298 | 353 | 407 | 462 | 500 | | | | | | | | | |
| 18 | 262 | 311 | 360 | 408 | 457 | 498 | | | | | | | | |
| 20 | 233 | 277 | 321 | 365 | 409 | 453 | 496 | | | | | | | |
| 22 | 209 | 250 | 290 | 330 | 370 | 410 | 450 | 491 | | | | | | |
| 24 | 188 | 226 | 263 | 300 | 337 | 374 | 411 | 448 | 485 | | | | | |
| 26 | 171 | 207 | 241 | 275 | 309 | 343 | 378 | 412 | 446 | 480 | | | | |
| 28 | 156 | 190 | 222 | 253 | 285 | 317 | 349 | 380 | 412 | 444 | | | | |
| 30 | 143 | 175 | 205 | 234 | 264 | 294 | 323 | 353 | 383 | 413 | | | | |
| 34 | 121 | 150 | 177 | 203 | 229 | 256 | 282 | 308 | 335 | 361 | 387 | | | |
| 38 | 103 | 130 | 155 | 179 | 202 | 226 | 249 | 273 | 296 | 320 | 344 | | | |
| 42 | 87 | 114 | 137 | 159 | 180 | 201 | 223 | 244 | 265 | 287 | 308 | 329 | | |
| 46 | 75 | 101 | 122 | 142 | 162 | 181 | 201 | 220 | 240 | 259 | 279 | 298 | | |
| 50 | 65 | 90 | 110 | 128 | 146 | 164 | 182 | 200 | 218 | 236 | 254 | 272 | 290 | |
| 54 | 57 | 81 | 99 | 116 | 133 | 150 | 166 | 183 | 200 | 216 | 233 | 250 | 266 | |
| 58 | 50 | 72 | 90 | 106 | 122 | 137 | 153 | 168 | 184 | 200 | 215 | 231 | 246 | |
| 62 | 44 | 64 | 82 | 98 | 112 | 127 | 141 | 156 | 170 | 185 | 199 | 214 | 229 | |
| 66 | 38 | 58 | 76 | 90 | 104 | 118 | 131 | 145 | 159 | 172 | 186 | 200 | 212 | |
| 70 | | | | | | | | | | | | | | |
| 74 | | | | | | | | | | | | | | |
| 78 | | | | | | | | | | | | | | |
| 82 | | | | | | | | | | | | | | |
| code 2 blocks | | | | | | | | | | | | | | |
| code 1 block | | | | | | | | | | | | | | |
| mast pend. # | 110 | 110 | 108 | 101 | 92 | 84 | 75 | 66 | 58 | 50 | 41 | 32 | 22 | |

= maximum allowed load in 1 mast pendant (t)

04 045 040/17
 rev. A
 serial number 129 141

Gottwald AK-680-4

serial number: 129 141
 Sarens machine identification: K407

04 045 061

max. wind 14 m/s

MAIN BOOM 79 m with MAXILIFT

Lift ratings in t, for 360° slew range, according EURO Standard
Maxilift mast 43 m, Maxilift radius 22.5 to 24.0 m
Counterweight: upper 206 t; lower 59 t
Outrigger base 14.5 x 14.5 m

| Maxilift ballast | 0 t | 50 t | 100 t | 150 t | 200 t | 250 t | 300 t | 350 t | 400 t | 450 t | 500 t | 550 t | 600 t | |
|------------------|------|----------------------------------|-------|-------|-------|-------|-------|-------|-------|-------|-------|-------|-------|--|
| reeving | 2 x6 | for reeving options see par. 1.4 | | | | | | | | | | | 2 x6 | |
| radius (m) | | | | | | | | | | | | | | |
| 14 | | | | | | | | | | | | | | |
| 15 | | | | | | | | | | | | | | |
| 16 | 296 | 350 | 405 | 430 | | | | | | | | | | |
| 18 | 260 | 309 | 357 | 406 | 428 | | | | | | | | | |
| 20 | 231 | 275 | 319 | 363 | 407 | 427 | | | | | | | | |
| 22 | 207 | 247 | 287 | 327 | 368 | 408 | 425 | | | | | | | |
| 24 | 186 | 224 | 261 | 298 | 335 | 372 | 409 | 423 | | | | | | |
| 26 | 168 | 204 | 239 | 273 | 307 | 341 | 375 | 409 | | | | | | |
| 28 | 153 | 187 | 219 | 251 | 283 | 314 | 346 | 378 | 410 | | | | | |
| 30 | 140 | 173 | 202 | 232 | 262 | 291 | 321 | 351 | 381 | 410 | | | | |
| 34 | 119 | 148 | 175 | 201 | 227 | 253 | 280 | 306 | 332 | 358 | 385 | | | |
| 38 | 100 | 128 | 153 | 176 | 200 | 223 | 247 | 270 | 294 | 317 | 341 | | | |
| 42 | 85 | 112 | 135 | 156 | 177 | 199 | 220 | 241 | 263 | 284 | 305 | 327 | | |
| 46 | 73 | 99 | 120 | 139 | 159 | 178 | 198 | 218 | 237 | 257 | 276 | 296 | | |
| 50 | 62 | 88 | 107 | 126 | 143 | 161 | 179 | 197 | 215 | 233 | 251 | 269 | 287 | |
| 54 | 54 | 78 | 96 | 114 | 130 | 147 | 164 | 180 | 197 | 214 | 230 | 247 | 264 | |
| 58 | 46 | 69 | 87 | 104 | 119 | 135 | 150 | 166 | 181 | 197 | 212 | 228 | 243 | |
| 62 | 40 | 61 | 79 | 95 | 109 | 124 | 138 | 153 | 167 | 182 | 196 | 211 | 226 | |
| 66 | 35 | 54 | 72 | 87 | 101 | 114 | 128 | 142 | 155 | 169 | 183 | 196 | 210 | |
| 70 | 30 | 49 | 66 | 80 | 93 | 106 | 119 | 132 | 145 | 158 | 171 | 183 | 196 | |
| 74 | 26 | 44 | 61 | 74 | 87 | 99 | 111 | 123 | 136 | 148 | 160 | 172 | 176 | |
| 78 | | | | | | | | | | | | | | |
| 82 | | | | | | | | | | | | | | |
| code 2 blocks | | | | | | | | | | | | | | |
| code 1 block | | | | | | | | | | | | | | |
| mast pend. # | 110 | 110 | 110 | 102 | 94 | 85 | 77 | 68 | 60 | 51 | 43 | 34 | 26 | |

= maximum allowed load in 1 mast pendant (t)

04 045 040/18
 rev. A
 serial number 129 141

Gottwald AK-680-4

serial number: 129 141
 Sarens machine identification: K407

04 045 061

max. wind 11 m/s

MAIN BOOM 85 m with MAXILIFT

Lift ratings in t, for 360° slew range, according EURO Standard
Maxilift mast 43 m, Maxilift radius 22.5 to 24.0 m
Counterweight: upper 206 t; lower 59 t
Outrigger base 14.5 x 14.5 m

| Maxilift ballast | 0 t | 50 t | 100 t | 150 t | 200 t | 250 t | 300 t | 350 t | 400 t | 450 t | 500 t | 550 t | 600 t | |
|------------------|------|----------------------------------|-------|-------|-------|-------|-------|-------|-------|-------|-------|-------|-------|------|
| reeving | 2 x6 | for reeving options see par. 1.4 | | | | | | | | | | | | 2 x6 |
| radius (m) | | | | | | | | | | | | | | |
| 16 | | | | | | | | | | | | | | |
| 18 | 259 | 308 | 357 | 400 | | | | | | | | | | |
| 20 | 230 | 274 | 318 | 362 | 399 | | | | | | | | | |
| 22 | 207 | 247 | 287 | 327 | 367 | 397 | | | | | | | | |
| 24 | 186 | 224 | 260 | 297 | 334 | 371 | 396 | | | | | | | |
| 26 | 168 | 204 | 238 | 272 | 306 | 340 | 374 | 394 | | | | | | |
| 28 | 153 | 187 | 219 | 250 | 282 | 314 | 346 | 377 | 393 | | | | | |
| 30 | 140 | 172 | 202 | 231 | 261 | 291 | 320 | 350 | 380 | | | | | |
| 34 | 118 | 147 | 174 | 200 | 226 | 253 | 279 | 305 | 332 | 358 | 384 | | | |
| 38 | 100 | 127 | 152 | 175 | 199 | 223 | 246 | 270 | 293 | 317 | 340 | | | |
| 42 | 85 | 111 | 134 | 155 | 177 | 198 | 219 | 241 | 262 | 284 | 305 | 326 | | |
| 46 | 72 | 98 | 119 | 139 | 158 | 178 | 197 | 217 | 236 | 256 | 275 | 295 | | |
| 50 | 62 | 87 | 107 | 125 | 143 | 161 | 179 | 197 | 215 | 233 | 251 | 269 | 287 | |
| 54 | 53 | 77 | 96 | 113 | 130 | 146 | 163 | 180 | 196 | 213 | 230 | 246 | 263 | |
| 58 | 46 | 68 | 87 | 103 | 118 | 134 | 149 | 165 | 180 | 196 | 212 | 227 | 243 | |
| 62 | 40 | 61 | 79 | 94 | 109 | 123 | 138 | 152 | 167 | 181 | 196 | 210 | 225 | |
| 66 | 34 | 54 | 72 | 86 | 100 | 114 | 127 | 141 | 155 | 168 | 182 | 196 | 209 | |
| 70 | 30 | 48 | 66 | 79 | 92 | 105 | 118 | 131 | 144 | 157 | 170 | 183 | 196 | |
| 74 | 26 | 43 | 60 | 73 | 86 | 98 | 110 | 122 | 135 | 147 | 159 | 171 | 183 | |
| 78 | 22 | 38 | 55 | 68 | 80 | 92 | 103 | 115 | 126 | 138 | 149 | 161 | 171 | |
| 82 | | | | | | | | | | | | | | |
| 86 | | | | | | | | | | | | | | |
| 90 | | | | | | | | | | | | | | |
| code 2 blocks | | | | | | | | | | | | | | |
| code 1 block | | | | | | | | | | | | | | |
| mast pend. # | 110 | 110 | 110 | 103 | 97 | 88 | 80 | 72 | 61 | 55 | 46 | 36 | 28 | |

= maximum allowed load in 1 mast pendant (t)

04 045 040/19
 rev. A
 serial number 129 141

Gottwald AK-680-4

serial number: 129 141
 Sarens machine identification: K407

04 045 061

max. wind 11 m/s

MAIN BOOM 91 m with MAXILIFT

Lift ratings in t, for 360° slew range, according EURO Standard
Maxilift mast 43 m, Maxilift radius 22.5 to 24.0 m
Counterweight: upper 206 t; lower 59 t
Outrigger base 14.5 x 14.5 m

| Maxilift ballast | 0 t | 50 t | 100 t | 150 t | 200 t | 250 t | 300 t | 350 t | 400 t | 450 t | 500 t | 550 t | 600 t | |
|------------------|------|----------------------------------|-------|-------|-------|-------|-------|-------|-------|-------|-------|-------|-------|------|
| reeving | 2 x6 | for reeving options see par. 1.4 | | | | | | | | | | | | 2 x6 |
| radius (m) | | | | | | | | | | | | | | |
| 16 | | | | | | | | | | | | | | |
| 18 | 256 | 305 | 342 | | | | | | | | | | | |
| 20 | 227 | 271 | 315 | 341 | | | | | | | | | | |
| 22 | 203 | 243 | 284 | 324 | 340 | | | | | | | | | |
| 24 | 182 | 220 | 257 | 294 | 331 | 339 | | | | | | | | |
| 26 | 165 | 200 | 235 | 269 | 303 | 337 | | | | | | | | |
| 28 | 150 | 184 | 215 | 247 | 279 | 310 | 337 | | | | | | | |
| 30 | 136 | 169 | 198 | 228 | 258 | 287 | 317 | 335 | | | | | | |
| 34 | 115 | 144 | 171 | 197 | 223 | 249 | 276 | 302 | 328 | | | | | |
| 38 | 96 | 124 | 149 | 172 | 196 | 219 | 243 | 266 | 290 | 313 | 328 | | | |
| 42 | 81 | 108 | 131 | 152 | 173 | 195 | 216 | 237 | 259 | 280 | 301 | 323 | | |
| 46 | 68 | 95 | 116 | 135 | 155 | 174 | 194 | 213 | 233 | 253 | 272 | 292 | | |
| 50 | 58 | 84 | 103 | 121 | 139 | 157 | 175 | 193 | 211 | 229 | 247 | 265 | 283 | |
| 54 | 49 | 73 | 92 | 110 | 126 | 143 | 160 | 176 | 193 | 210 | 226 | 243 | 260 | |
| 58 | 42 | 64 | 83 | 99 | 115 | 130 | 146 | 161 | 177 | 193 | 208 | 224 | 239 | |
| 62 | 36 | 56 | 75 | 91 | 105 | 120 | 134 | 149 | 163 | 178 | 192 | 207 | 221 | |
| 66 | 30 | 50 | 68 | 83 | 96 | 110 | 124 | 137 | 151 | 165 | 178 | 192 | 206 | |
| 70 | 25 | 44 | 62 | 76 | 89 | 102 | 115 | 128 | 140 | 153 | 166 | 179 | 192 | |
| 74 | 21 | 39 | 56 | 70 | 82 | 94 | 107 | 119 | 131 | 143 | 155 | 168 | 180 | |
| 78 | 18 | 34 | 50 | 64 | 76 | 88 | 99 | 111 | 123 | 134 | 146 | 157 | 169 | |
| 82 | 15 | 30 | 46 | 60 | 71 | 82 | 93 | 104 | 115 | 126 | 137 | 148 | 159 | |
| 86 | | | | | | | | | | | | | | |
| 90 | | | | | | | | | | | | | | |
| 94 | | | | | | | | | | | | | | |
| 98 | | | | | | | | | | | | | | |
| 102 | | | | | | | | | | | | | | |
| 106 | | | | | | | | | | | | | | |
| code 2 blocks | | | | | | | | | | | | | | |
| code 1 block | | | | | | | | | | | | | | |
| mast pend. # | 110 | 110 | 110 | 107 | 99 | 91 | 83 | 74 | 66 | 57 | 49 | 41 | 32 | |

= maximum allowed load in 1 mast pendant (t)

04 045 040/20
 rev. A
 serial number 129 141

Gottwald AK-680-4

serial number: 129 141
 Sarens machine identification: K407

04 045 061

max. wind 11 m/s

MAIN BOOM 97 m with MAXILIFT

Lift ratings in t, for 360° slew range, according EURO Standard
Maxilift mast 43 m, Maxilift radius 22.5 to 24.0 m
Counterweight: upper 206 t; lower 59 t
Outrigger base 14.5 x 14.5 m

| Maxilift ballast | 0 t | 50 t | 100 t | 150 t | 200 t | 250 t | 300 t | 350 t | 400 t | 450 t | 500 t | 550 t | 600 t | |
|------------------|------|----------------------------------|-------|-------|-------|-------|-------|-------|-------|-------|-------|-------|-------|--|
| reeving | 2 x5 | for reeving options see par. 1.4 | | | | | | | | | | | | |
| radius (m) | | | | | | | | | | | | | | |
| 18 | | | | | | | | | | | | | | |
| 20 | 227 | 295 | | | | | | | | | | | | |
| 22 | 203 | 271 | 294 | | | | | | | | | | | |
| 24 | 182 | 243 | 283 | 294 | | | | | | | | | | |
| 26 | 164 | 220 | 257 | 294 | | | | | | | | | | |
| 28 | 149 | 200 | 234 | 268 | 293 | | | | | | | | | |
| 30 | 136 | 183 | 215 | 247 | 278 | 292 | | | | | | | | |
| 34 | 115 | 168 | 198 | 228 | 257 | 287 | 291 | | | | | | | |
| 38 | 97 | 144 | 170 | 196 | 223 | 249 | 275 | 288 | | | | | | |
| 42 | 81 | 124 | 148 | 172 | 195 | 219 | 242 | 266 | 285 | | | | | |
| 46 | 68 | 108 | 130 | 152 | 173 | 194 | 216 | 237 | 258 | 280 | | | | |
| 50 | 58 | 94 | 116 | 135 | 154 | 174 | 193 | 213 | 233 | 252 | 247 | 265 | | |
| 54 | 49 | 83 | 103 | 121 | 139 | 157 | 175 | 193 | 211 | 229 | 226 | 242 | 259 | |
| 58 | 41 | 73 | 92 | 109 | 126 | 142 | 159 | 176 | 192 | 209 | 207 | 223 | 238 | |
| 62 | 35 | 64 | 83 | 99 | 114 | 130 | 145 | 161 | 176 | 192 | 192 | 206 | 221 | |
| 66 | 30 | 56 | 75 | 90 | 104 | 119 | 133 | 148 | 163 | 177 | 178 | 191 | 205 | |
| 70 | 25 | 49 | 68 | 82 | 96 | 109 | 123 | 137 | 150 | 164 | 165 | 178 | 191 | |
| 74 | 20 | 43 | 61 | 75 | 88 | 101 | 114 | 127 | 140 | 152 | 154 | 167 | 179 | |
| 78 | 17 | 38 | 55 | 69 | 81 | 93 | 106 | 118 | 130 | 142 | 145 | 156 | 168 | |
| 82 | 13 | 33 | 50 | 63 | 75 | 87 | 98 | 110 | 121 | 133 | 136 | 147 | 158 | |
| 86 | 11 | 29 | 45 | 58 | 70 | 81 | 92 | 103 | 114 | 125 | 128 | 138 | 149 | |
| 90 | -- | 25 | 40 | 54 | 65 | 75 | 86 | 96 | 107 | 117 | 121 | 131 | 139 | |
| 94 | -- | 22 | 36 | 50 | 61 | 71 | 81 | 91 | 101 | 111 | 115 | 120 | | |
| 98 | | | | | | | | | | | | | | |
| 102 | | | | | | | | | | | | | | |
| 106 | | | | | | | | | | | | | | |
| 110 | | | | | | | | | | | | | | |
| code 2 blocks | | | | | | | | | | | | | | |
| code 1 block | | | | | | | | | | | | | | |
| mast pend. # | 110 | 110 | 110 | 110 | 102 | 94 | 84 | 77 | 69 | 61 | 52 | 44 | 32 | |

= maximum allowed load in 1 mast pendant (t)

04 045 040/21
 rev. A
 serial number 129 141

Gottwald AK-680-4

serial number: 129 141
 Sarens machine identification: K407

04 045 061

max. wind 11 m/s

MAIN BOOM 103 m with MAXILIFT

Lift ratings in t, for 360° slew range, according EURO Standard
Maxilift mast 43 m, Maxilift radius 22.5 to 24.0 m
Counterweight: upper 206 t; lower 59 t
Outrigger base 14.5 x 14.5 m

| Maxilift ballast reeving | 0 t | 50 t | 100 t | 150 t | 200 t | 250 t | 300 t | 350 t | 400 t | 450 t | 500 t | 550 t | 600 t | |
|--------------------------|-----|------|-------|-------|-------|-------|-------|-------|-------|-------|-------|-------|-------|--|
| radius (m) | | | | | | | | | | | | | | |
| 18 | | | | | | | | | | | | | | |
| 20 | 226 | 250 | | | | | | | | | | | | |
| 22 | 202 | 242 | 250 | | | | | | | | | | | |
| 24 | 182 | 219 | 250 | | | | | | | | | | | |
| 26 | 164 | 199 | 234 | 250 | | | | | | | | | | |
| 28 | 149 | 182 | 214 | 246 | 250 | | | | | | | | | |
| 30 | 136 | 168 | 197 | 227 | 250 | | | | | | | | | |
| 34 | 114 | 143 | 170 | 196 | 222 | 248 | | | | | | | | |
| 38 | 96 | 123 | 147 | 171 | 194 | 218 | 242 | 246 | | | | | | |
| 42 | 80 | 107 | 130 | 151 | 172 | 193 | 215 | 236 | 244 | | | | | |
| 46 | 67 | 94 | 115 | 134 | 154 | 173 | 193 | 212 | 232 | 241 | | | | |
| 50 | 57 | 82 | 102 | 120 | 138 | 156 | 174 | 192 | 210 | 228 | 239 | | | |
| 54 | 48 | 73 | 91 | 108 | 125 | 142 | 158 | 175 | 192 | 208 | 225 | 236 | | |
| 58 | 41 | 63 | 82 | 98 | 113 | 129 | 144 | 160 | 176 | 191 | 207 | 222 | | |
| 62 | 34 | 55 | 74 | 89 | 104 | 118 | 133 | 147 | 162 | 176 | 191 | 205 | 220 | |
| 66 | 29 | 48 | 67 | 81 | 95 | 108 | 122 | 136 | 149 | 163 | 177 | 190 | 204 | |
| 70 | 24 | 42 | 60 | 74 | 87 | 100 | 113 | 126 | 139 | 152 | 164 | 177 | 190 | |
| 74 | 19 | 37 | 54 | 68 | 80 | 92 | 105 | 117 | 129 | 141 | 153 | 166 | 178 | |
| 78 | 16 | 32 | 49 | 62 | 74 | 86 | 97 | 109 | 120 | 132 | 144 | 155 | 167 | |
| 82 | 12 | 28 | 44 | 57 | 69 | 80 | 91 | 102 | 113 | 124 | 135 | 146 | 157 | |
| 86 | -- | 24 | 39 | 53 | 64 | 74 | 85 | 95 | 106 | 116 | 127 | 137 | 148 | |
| 90 | -- | 21 | 35 | 49 | 59 | 70 | 80 | 90 | 100 | 110 | 120 | 130 | 140 | |
| 94 | -- | 18 | 32 | 45 | 56 | 65 | 75 | 84 | 94 | 104 | 113 | 123 | 132 | |
| 98 | | | | | | | | | | | | | | |
| 102 | | | | | | | | | | | | | | |
| 106 | | | | | | | | | | | | | | |
| 110 | | | | | | | | | | | | | | |
| code 2 blocks | | | | | | | | | | | | | | |
| code 1 block | | | | | | | | | | | | | | |
| mast pend. # | 110 | 110 | 110 | 110 | 105 | 95 | 87 | 79 | 70 | 62 | 54 | 45 | 37 | |

= maximum allowed load in 1 mast pendant (t)

04 045 040/22
 rev. A
 serial number 129 141

Gottwald AK-680-4

serial number: 129 141
 Sarens machine identification: K407

04 045 061

max. wind 11 m/s

MAIN BOOM 109 m with MAXILIFT

Lift ratings in t, for 360° slew range, according EURO Standard
Maxilift mast 43 m, Maxilift radius 22.5 to 24.0 m
Counterweight: upper 206 t; lower 59 t
Outrigger base 14.5 x 14.5 m

| Maxilift ballast reeving radius (m) | 0 t | 50 t | 100 t | 150 t | 200 t | 250 t | 300 t | 350 t | 400 t | 450 t | 500 t | 550 t | 600 t | |
|-------------------------------------|------|------|-------|-------|-------|-------|-------|-------|-------|-------|-------|-------|-------|--|
| | 2 x4 | 2 x4 | 2 x4 | 2 x4 | 2 x4 | 2 x4 | 2 x4 | 2 x4 | 2 x4 | 2 x4 | 2 x4 | 2 x4 | 2 x4 | |
| 20 | 214 | | | | | | | | | | | | | |
| 22 | 201 | 213 | | | | | | | | | | | | |
| 24 | 180 | 213 | | | | | | | | | | | | |
| 26 | 162 | 198 | 213 | | | | | | | | | | | |
| 28 | 147 | 181 | 213 | | | | | | | | | | | |
| 30 | 134 | 166 | 196 | 213 | | | | | | | | | | |
| 34 | 113 | 141 | 168 | 194 | 213 | | | | | | | | | |
| 38 | 95 | 121 | 146 | 169 | 193 | 212 | | | | | | | | |
| 42 | 79 | 105 | 128 | 149 | 171 | 192 | 210 | | | | | | | |
| 46 | 66 | 92 | 113 | 132 | 152 | 171 | 191 | 209 | | | | | | |
| 50 | 55 | 81 | 100 | 118 | 136 | 154 | 172 | 190 | 207 | | | | | |
| 54 | 47 | 71 | 89 | 106 | 123 | 140 | 156 | 173 | 190 | 204 | | | | |
| 58 | 39 | 62 | 80 | 96 | 112 | 127 | 143 | 158 | 174 | 189 | 202 | | | |
| 62 | 32 | 54 | 72 | 87 | 102 | 116 | 131 | 145 | 160 | 174 | 189 | 200 | | |
| 66 | 27 | 46 | 65 | 79 | 93 | 107 | 120 | 134 | 148 | 161 | 175 | 189 | 197 | |
| 70 | 22 | 40 | 59 | 72 | 85 | 98 | 111 | 124 | 137 | 150 | 163 | 175 | 188 | |
| 74 | 17 | 35 | 52 | 66 | 78 | 91 | 103 | 115 | 127 | 139 | 152 | 164 | 176 | |
| 78 | 13 | 30 | 47 | 60 | 72 | 84 | 95 | 107 | 118 | 130 | 142 | 153 | 165 | |
| 82 | 10 | 26 | 41 | 55 | 67 | 78 | 89 | 100 | 111 | 122 | 133 | 144 | 155 | |
| 86 | -- | 22 | 37 | 51 | 62 | 72 | 83 | 93 | 104 | 114 | 125 | 135 | 146 | |
| 90 | -- | 18 | 33 | 47 | 57 | 67 | 77 | 87 | 97 | 107 | 117 | 127 | 137 | |
| 94 | -- | 15 | 29 | 42 | 53 | 63 | 72 | 82 | 91 | 101 | 111 | 120 | 130 | |
| 98 | -- | 12 | 25 | 38 | 49 | 59 | 68 | 77 | 86 | 95 | 105 | 114 | 123 | |
| 102 | -- | -- | 22 | 35 | 46 | 55 | 64 | 73 | 81 | 90 | 99 | 108 | 115 | |
| 106 | | | | | | | | | | | | | | |
| code 2 blocks | | | | | | | | | | | | | | |
| code 1 block | | | | | | | | | | | | | | |
| mast pend. # | 110 | 110 | 110 | 110 | 107 | 99 | 90 | 82 | 74 | 66 | 57 | 49 | 37 | |

= maximum allowed load in 1 mast pendant (t)

04 045 040/23
 rev. A
 serial number 129 141

Gottwald AK-680-4

serial number: 129 141
 Sarens machine identification: K407

04 045 061

max. wind 11 m/s

MAIN BOOM 115 m with MAXILIFT

Lift ratings in t, for 360° slew range, according EURO Standard
Maxilift mast 43 m, Maxilift radius 22.5 to 24.0 m
Counterweight: upper 206 t; lower 59 t
Outrigger base 14.5 x 14.5 m

| Maxilift ballast reeving | 0 t | 50 t | 100 t | 150 t | 200 t | 250 t | 300 t | 350 t | 400 t | 450 t | 500 t | 550 t | 600 t | |
|--------------------------|------|------|-------|-------|-------|-------|-------|-------|-------|-------|-------|-------|-------|--|
| | 2 x4 | 2 x4 | 2 x4 | 2 x4 | 2 x4 | 2 x4 | 2 x4 | 2 x4 | 2 x4 | 2 x4 | 2 x4 | 2 x4 | 2 x4 | |
| radius (m) | | | | | | | | | | | | | | |
| 20 | | | | | | | | | | | | | | |
| 22 | 185 | | | | | | | | | | | | | |
| 24 | 180 | 184 | | | | | | | | | | | | |
| 26 | 162 | 184 | | | | | | | | | | | | |
| 28 | 147 | 180 | 184 | | | | | | | | | | | |
| 30 | 133 | 165 | 184 | | | | | | | | | | | |
| 34 | 112 | 141 | 167 | 184 | | | | | | | | | | |
| 38 | 94 | 121 | 145 | 169 | 184 | | | | | | | | | |
| 42 | 78 | 105 | 127 | 148 | 170 | 183 | | | | | | | | |
| 46 | 65 | 91 | 112 | 132 | 151 | 171 | 182 | | | | | | | |
| 50 | 55 | 80 | 100 | 118 | 136 | 154 | 172 | 181 | | | | | | |
| 54 | 46 | 70 | 89 | 106 | 122 | 139 | 156 | 172 | 179 | | | | | |
| 58 | 38 | 61 | 79 | 95 | 111 | 126 | 142 | 158 | 173 | 178 | | | | |
| 62 | 32 | 53 | 71 | 86 | 101 | 116 | 130 | 145 | 159 | 174 | 176 | | | |
| 66 | 26 | 46 | 64 | 79 | 92 | 106 | 120 | 133 | 147 | 161 | 174 | | | |
| 70 | 21 | 39 | 58 | 72 | 84 | 97 | 110 | 123 | 136 | 149 | 162 | 172 | | |
| 74 | 16 | 34 | 52 | 65 | 78 | 90 | 102 | 114 | 126 | 139 | 151 | 163 | 170 | |
| 78 | 13 | 29 | 46 | 60 | 71 | 83 | 95 | 106 | 118 | 129 | 141 | 152 | 164 | |
| 82 | -- | 25 | 41 | 55 | 66 | 77 | 88 | 99 | 110 | 121 | 132 | 143 | 154 | |
| 86 | -- | 21 | 36 | 50 | 61 | 71 | 82 | 92 | 103 | 113 | 124 | 134 | 145 | |
| 90 | -- | 17 | 32 | 46 | 56 | 66 | 76 | 86 | 96 | 106 | 117 | 127 | 137 | |
| 94 | -- | 14 | 28 | 41 | 52 | 62 | 71 | 81 | 91 | 100 | 110 | 119 | 129 | |
| 98 | -- | 11 | 24 | 37 | 48 | 58 | 67 | 76 | 85 | 95 | 104 | 113 | 122 | |
| 102 | -- | -- | 21 | 34 | 45 | 54 | 63 | 72 | 80 | 89 | 98 | 107 | 116 | |
| 106 | -- | -- | 19 | 30 | 42 | 50 | 59 | 68 | 76 | 85 | 93 | 102 | 110 | |
| 110 | | | | | | | | | | | | | | |
| code 2 blocks | | | | | | | | | | | | | | |
| code 1 block | | | | | | | | | | | | | | |
| mast pend. # | 110 | 110 | 110 | 110 | 109 | 102 | 94 | 86 | 75 | 67 | 59 | 51 | 42 | |

= maximum allowed load in 1 mast pendant (t)

04 045 040/24
 rev. A
 serial number 129 141

Gottwald AK-680-4

serial number: 129 141
 Sarens machine identification: K407

04 045 061

max. wind 11 m/s

MAIN BOOM 121 m with MAXILIFT

Lift ratings in t, for 360° slew range, according EURO Standard
Maxilift mast 43 m, Maxilift radius 22.5 to 24.0 m
Counterweight: upper 206 t; lower 59 t
Outrigger base 14.5 x 14.5 m

| Maxilift ballast reeving | 0 t | 50 t | 100 t | 150 t | 200 t | 250 t | 300 t | 350 t | 400 t | 450 t | 500 t | 550 t | 600 t | |
|--------------------------|-------|-------|-------|-------|-------|-------|-------|-------|-------|-------|-------|-------|-------|--|
| radius (m) | 2 x 4 | 2 x 4 | 2 x 4 | 2 x 4 | 2 x 4 | 2 x 4 | 2 x 4 | 2 x 4 | 2 x 4 | 2 x 4 | 2 x 4 | 2 x 4 | 2 x 4 | |
| 22 | 155 | | | | | | | | | | | | | |
| 24 | 155 | | | | | | | | | | | | | |
| 26 | 155 | | | | | | | | | | | | | |
| 28 | 144 | 155 | | | | | | | | | | | | |
| 30 | 130 | 154 | | | | | | | | | | | | |
| 34 | 109 | 138 | 154 | | | | | | | | | | | |
| 38 | 91 | 118 | 142 | 154 | | | | | | | | | | |
| 42 | 75 | 102 | 124 | 145 | 153 | | | | | | | | | |
| 46 | 62 | 88 | 109 | 129 | 148 | 152 | | | | | | | | |
| 50 | 51 | 77 | 97 | 115 | 133 | 151 | | | | | | | | |
| 54 | 42 | 67 | 86 | 103 | 119 | 136 | 150 | | | | | | | |
| 58 | 34 | 57 | 76 | 92 | 108 | 123 | 139 | 149 | | | | | | |
| 62 | 28 | 49 | 68 | 83 | 98 | 112 | 127 | 141 | 148 | | | | | |
| 66 | 22 | 42 | 61 | 75 | 89 | 103 | 116 | 130 | 144 | 146 | | | | |
| 70 | 17 | 36 | 54 | 68 | 81 | 94 | 107 | 120 | 133 | 145 | | | | |
| 74 | 13 | 30 | 48 | 62 | 74 | 87 | 99 | 111 | 123 | 135 | 143 | | | |
| 78 | -- | 25 | 42 | 56 | 68 | 80 | 91 | 103 | 114 | 126 | 138 | 141 | | |
| 82 | -- | 21 | 37 | 51 | 63 | 74 | 85 | 96 | 107 | 118 | 129 | 140 | | |
| 86 | -- | 17 | 32 | 47 | 58 | 68 | 79 | 89 | 100 | 110 | 121 | 131 | 138 | |
| 90 | -- | 13 | 28 | 42 | 53 | 63 | 73 | 83 | 93 | 103 | 113 | 123 | 133 | |
| 94 | -- | 10 | 24 | 37 | 49 | 58 | 68 | 78 | 87 | 97 | 107 | 116 | 126 | |
| 98 | -- | -- | 20 | 33 | 45 | 54 | 64 | 73 | 82 | 91 | 100 | 110 | 119 | |
| 102 | -- | -- | 17 | 30 | 42 | 50 | 59 | 68 | 77 | 86 | 95 | 104 | 113 | |
| 106 | -- | -- | 15 | 26 | 38 | 47 | 56 | 64 | 73 | 81 | 90 | 98 | 107 | |
| 110 | -- | -- | 12 | 23 | 35 | 44 | 52 | 60 | 69 | 77 | 85 | 93 | 101 | |
| 114 | -- | -- | 10 | 21 | 32 | 41 | 49 | 57 | 65 | 73 | 81 | 89 | 92 | |
| 118 | | | | | | | | | | | | | | |
| code 2 blocks | | | | | | | | | | | | | | |
| code 1 block | | | | | | | | | | | | | | |
| mast pend. # | 110 | 110 | 110 | 110 | 110 | 105 | 97 | 89 | 80 | 72 | 64 | 56 | 35 | |

= maximum allowed load in 1 mast pendant (t)

04 045 040/25
 rev. A
 serial number 129 141

Gottwald AK-680-4

serial number: 129 141
 Sarens machine identification: K407

04 045 061

max. wind 11 m/s

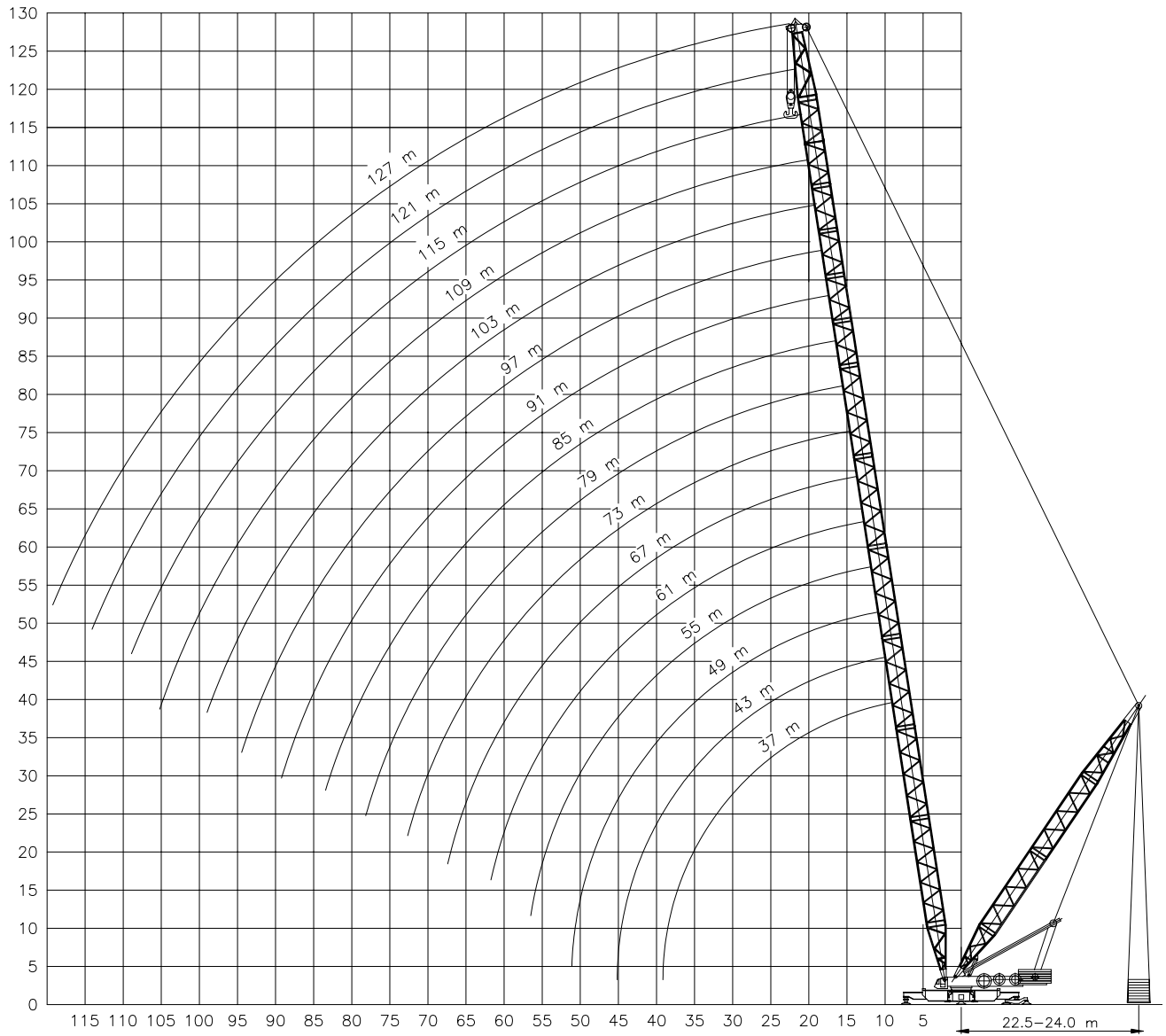
MAIN BOOM 127 m with MAXILIFT

Lift ratings in t, for 360° slew range, according EURO Standard
Maxilift mast 43 m, Maxilift radius 22.5 to 24.0 m
Counterweight: upper 206 t; lower 59 t
Outrigger base 14.5 x 14.5 m

| Maxilift ballast reeving | 0 t | 50 t | 100 t | 150 t | 200 t | 250 t | 300 t | 350 t | 400 t | 450 t | 500 t | 550 t | 600 t | |
|--------------------------|-------|-------|-------|-------|-------|-------|-------|-------|-------|-------|-------|-------|-------|--|
| radius (m) | 2 x 4 | 2 x 4 | 2 x 4 | 2 x 4 | 2 x 4 | 2 x 4 | 2 x 4 | 2 x 4 | 2 x 4 | 2 x 4 | 2 x 4 | 2 x 4 | 2 x 4 | |
| 22 | | | | | | | | | | | | | | |
| 24 | 126 | | | | | | | | | | | | | |
| 26 | 126 | | | | | | | | | | | | | |
| 28 | 125 | | | | | | | | | | | | | |
| 30 | 125 | | | | | | | | | | | | | |
| 34 | 106 | 126 | | | | | | | | | | | | |
| 38 | 87 | 115 | 126 | | | | | | | | | | | |
| 42 | 71 | 98 | 121 | 126 | | | | | | | | | | |
| 46 | 58 | 85 | 106 | 125 | | | | | | | | | | |
| 50 | 47 | 74 | 94 | 111 | 124 | | | | | | | | | |
| 54 | 38 | 63 | 83 | 99 | 116 | 124 | | | | | | | | |
| 58 | 31 | 53 | 73 | 89 | 105 | 120 | 123 | | | | | | | |
| 62 | 24 | 45 | 65 | 80 | 95 | 109 | 122 | | | | | | | |
| 66 | 18 | 38 | 58 | 72 | 86 | 100 | 113 | 121 | | | | | | |
| 70 | 13 | 32 | 51 | 65 | 78 | 91 | 104 | 117 | 120 | | | | | |
| 74 | -- | 26 | 44 | 59 | 71 | 83 | 96 | 108 | 118 | | | | | |
| 78 | -- | 21 | 38 | 53 | 65 | 77 | 88 | 100 | 111 | 117 | | | | |
| 82 | -- | 17 | 33 | 48 | 59 | 70 | 81 | 92 | 103 | 114 | 116 | | | |
| 86 | -- | 13 | 28 | 43 | 54 | 65 | 75 | 86 | 96 | 107 | 114 | | | |
| 90 | -- | 10 | 24 | 38 | 50 | 60 | 70 | 80 | 90 | 100 | 110 | 113 | | |
| 94 | -- | -- | 20 | 34 | 46 | 55 | 65 | 74 | 84 | 94 | 103 | 112 | | |
| 98 | -- | -- | 17 | 30 | 42 | 51 | 60 | 69 | 79 | 88 | 97 | 106 | 110 | |
| 102 | -- | -- | 13 | 26 | 38 | 47 | 56 | 65 | 74 | 83 | 92 | 100 | 108 | |
| 106 | -- | -- | 11 | 22 | 35 | 44 | 52 | 61 | 69 | 78 | 86 | 95 | 103 | |
| 110 | -- | -- | -- | 19 | 31 | 41 | 49 | 57 | 65 | 73 | 82 | 90 | 98 | |
| 114 | -- | -- | -- | 17 | 28 | 38 | 46 | 53 | 61 | 69 | 77 | 85 | 93 | |
| 118 | | | | | | | | | | | | | | |
| code 2 blocks | | | | | | | | | | | | | | |
| code 1 block | | | | | | | | | | | | | | |
| mast pend. # | 110 | 110 | 110 | 110 | 110 | 106 | 98 | 90 | 82 | 74 | 65 | 57 | 49 | |

= maximum allowed load in 1 mast pendant (t)

3.3 REACH MAIN BOOM WITH MAXILIFT



3.4 ALLOWABLE WINDSPEED

| GOTTWALD AK-680-4 | | |
|--|-------------------------------|--------------------------------|
| Serial number: 129 141 | | |
| Sarens machine identification: K407 | | |
| Main Boom with Maxilift | | |
| Maxilift mast 43 m; Maxilift radius 22.5 to 24.0 m | | |
| Outrigger basis: 14.5 m x 14.5 m | | |
| length main boom (m) | working wind (m/s) | lower boom at (m/s) |
| 37 | 17 | 28 |
| 43 | 17 | 28 |
| 49 | 17 | 28 |
| 55 | 14 | 28 |
| 61 | 14 | 28 |
| 67 | 14 | 28 |
| 73 | 14 | 28 |
| 79 | 14 | 28 |
| 85 | 11 | 24 |
| 91 | 11 | 24 |
| 97 | 11 | 24 |
| 103 | 11 | 24 |
| 109 | 11 | 24 |
| 115 | 11 | 24 |
| 121 | 11 | 24 |
| 127 | 11 | 24 |

Crane parking with raised boom at appr. 70 deg from horizontal