



SE170W-3A

WHEELED EXCAVATOR SERIES-3

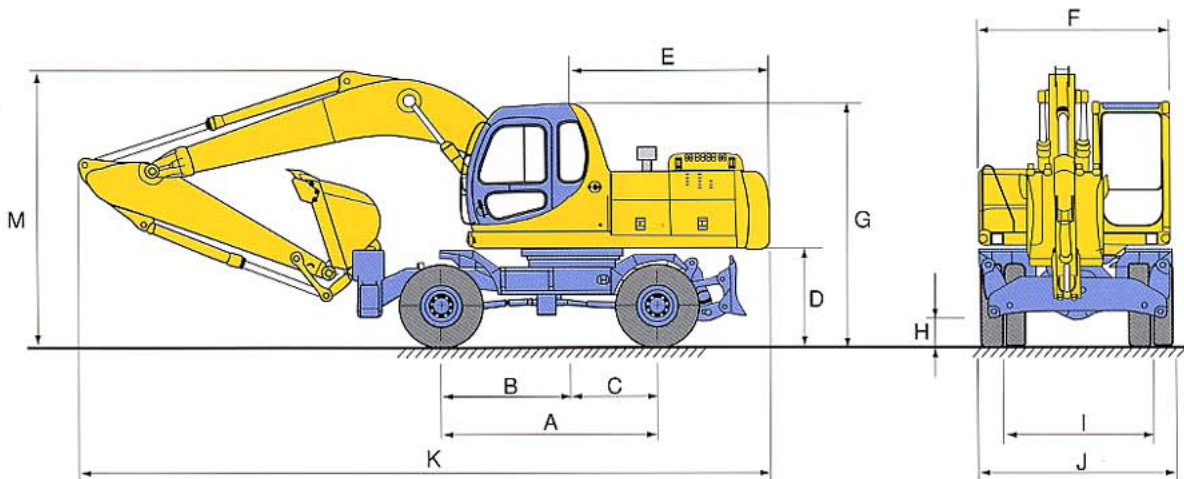


Flywheel Horsepower;	145 ps	107 kW
Bucket Capacity; SAE	0.75 m ³	0.98 yd ³
	CECE 0.65 m ³	0.85 yd ³
Operating Weight;	17300 kg	38140 lb

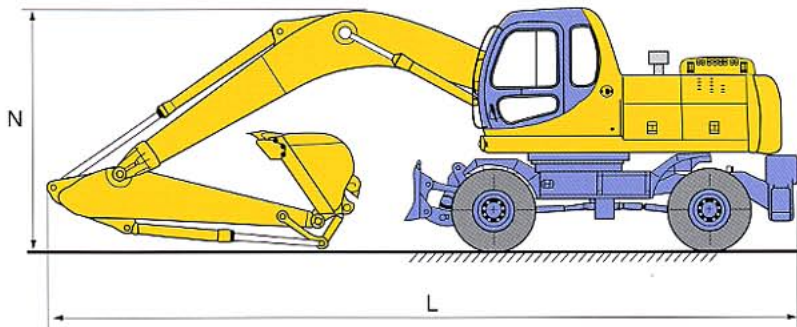
DIMENSIONS

(unit:mm)

● Travel

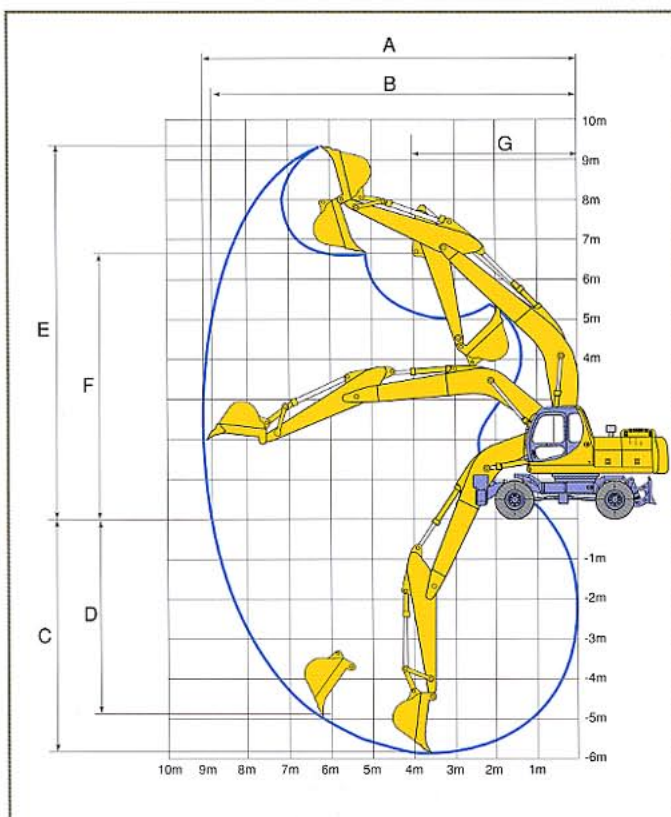


● Transport



A	Wheel base	2800mm
B	Center of front axle to swing center	1700mm
C	Center of rear axle to swing center	1100mm
D	Clearance under counterweight	1250mm
E	Tail swing radius	2600mm
F	Overall width of upper structure	2460mm
G	Cab height	3090mm
H	Minimum ground clearance	320mm
I	Tread	1874mm
J	Overall width	2495mm
K	Overall length(Travel)	8950mm
L	Overall length(Transport)	9140mm
M	Overall height(Travel)	3670mm
N	Overall height(Transport)	3100mm

WORKING RANGES



Arm	Standard Arm 2.57m	Long Arm 3.1m	
Max. digging reach(A)	9170 mm	9600 mm	
Max. digging reach on ground (B)	8870 mm	9310 mm	
Max. digging depth(C)	5900 mm	6400 mm	
Max. vertical digging depth (D)	4870 mm	5450 mm	
Max. cutting height (E)	9420 mm	9590 mm	
Max. dumping height (F)	6680 mm	6870 mm	
Min. front swing radius (G)	3080 mm	3120 mm	
Max. digging force	Bucket	10550 / 11540 kg	10550 / 11540 kg
	Arm	8010 / 8760 kg	7110 / 7780 kg

■ Bucket & Arm Combination

Bucket	Narrow Bucket	Standard Bucket	Reinforced Bucket	Wide Bucket
Bucket capacity(SAE/CECE)	0.57 / 0.5m³	0.75 / 0.65m³	0.75 / 0.65m³	0.93 / 0.8m³
Bucket width (with/without side cutter)	905 / 795	1100 / 990	1100 / 990	1295 / 1185
No. of teeth	4(★)	5(★)	5(★)	5(★)
Application	Trenching	General purpose	Extreme service	Loading service
Arm options	Standard arm 2.57m	○	○	○
	Long arm 3.1m	○	□	□
Remark	Standard			

★ : Horizontal and vertical pin type are available
 ○ : Applicable for general purpose up to 2000kg/m³
 □ : Applicable for light duty up to 1600kg/m³
 × : Not usable

SPECIFICATIONS

OPERATING WEIGHT

Operating weight 17300kg
 Operating weight includes 5.2m Boom, 2.57m Arm, front stabilizer, rear dozer blade and SAE heaped 0.75m³ bucket.

ENGINE

Model CUMMINS B5.9-C
 Flywheel horsepower 145ps (143hp/107kW) at 1900 rpm
 Max. torque 63 kg · m at 1500 rpm
 No. of cylinders 6
 Displacement 5880 cc
 Bore and stroke 102 mm × 120 mm

HYDRAULIC SYSTEM

The advanced ACS hydraulic system ensures high efficiency and minimizes work time at any job site.

No. of modes 4 working modes
 3 travel modes

Pumps

Main pump:
 Type 2 × Variable displacement axial piston pumps
 Maximum flow 2 × 200 l / min
 Pilot pump Gear pump
 Steering pump Gear pump
 Brake pump Gear pump

Hydraulic motors

Travel Variable displacement axial piston motor
 Swing fixed displacement piston motor with mechanical brake

Relief valve setting

Implement 320 / 350kg / cm²
 Travel circuit 350kg / cm²
 Steering circuit 150kg / cm²
 Swing circuit 270kg / cm²
 Pilot circuit 40kg / cm²

Hydraulic cylinders

Boom 2
 bore × stroke $\varnothing 115 \times 1165$ mm
 Arm 1
 bore × stroke $\varnothing 120 \times 1495$ mm
 Bucket 1
 bore × stroke $\varnothing 115 \times 990$ mm

SWING

Swing brake Automatic mechanical brake with hydraulic control
 Swing reduction 2 stage planetary reduction gear
 Swing speed 12.3 rpm
 Swing circle lubrication grease bath

TRANSMISSION

Hydrostatic transmission with variable displacement axial piston motor.
 Travel speed Forward, reverse
 1st 9.0 km/h
 2nd 34.0 km/h
 gradeability 37° (75%)

BRAKE SYSTEM

Service brake : Dual circuit hydraulic system with multi wet discs on four wheels.
 Parking brake : Multi discs with negative actuation, by manual hydraulic control.
 Emergency brake : Automatic when compressed system pressure falls below a safety limit.

STEERING SYSTEM

Type Hydraulically actuated, open center none reaction type steering system
 Steering cylinder One, double-effect
 Min. turning radius, center of outer wheel 7050 mm

AXLES

Type Full floating with planetary gear
 Oscillating angle $\pm 6.5^\circ$
 Max. tractive effort 10700 kg

Coolant & Lubrication Capacities

Engine 24 l
 Transmission 3.8 l
 Swing drive 6.0 l
 Swing grease bath 27 l
 Axle 23 l × 2
 Coolant 26.5 l
 Hydraulic tank 200 l
 Fuel tank 295 l

ELECTRICAL SYSTEM

Voltage 24V
 Batteries in series 2
 rating(total) 150Ah
 Alternator 50Ah
 Starter 7.5 kW

TIRES

Double 10 × 20 -14PR

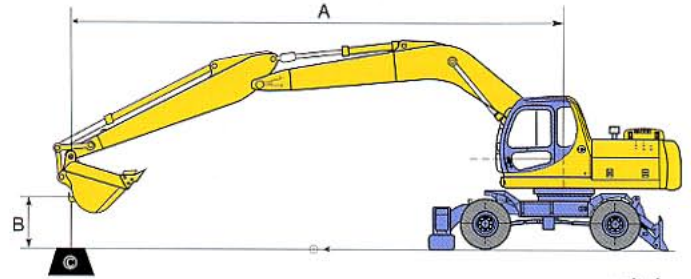
STANDARD EQUIPMENT

- Air Cleaner
- Adjustable Monitor
- Alternator(50A)
- Automatic Idling System
- Automatic Deaeration System
- Auxiliary Hydraulic Valve
- Batteries
- Battery Sealing Cover
- Boom / Arm Holding Valve
- Bucket Cylinder Cushion
- Dampening Cab Mountings
- Dozer Blade
- Engine Restart Prevention Circuit
- Integrated Mode Selection System
- Joysticks, Pilot-operated
- Cab, All-weather Sound Suppressed, Includes;
 - Ashtray
 - Cigar Lighter
 - Door Locks
 - Floor Mat
 - Horn
 - Hot & Cool Box
 - Pull-up Type Front Window
 - Removable Lower Windshield
 - Seat
 - Seat Belt
 - Safety Glasses
 - Windshield Wiper with Intermittent Feature
- Low Emission Engine
- Light :
 - Frame Mounted, Two
 - Boom Mounted, Two
- Master Switch
- Mirrors
- One Touch Power Boost
- Outrigger
- Safe Engine Start / Stop Function
- Self-diagnostic System
- Starting Motor(24 volt, 7.2kW)
- Tilttable Steering Column
- Tire : 10.00 × 20 -14PR
- Tool Box, Locking
- Water Separator, Fuel line

OPTIONAL EQUIPMENT

- Anti-drop Valve : Boom, Arm
- Air Conditioner
- Air Heater
- Automatic Cruise System
- Block Heater : 120V, 240V
- Cab Guard
- FOPS & Front Guard
- Fuel Filler Pump
- Fuel Warmer
- Heater
- Overload Warning Device
- Precleaner
- Purifier
- Spare Parts
- Stereo Cassette Radio (AM / FM)
- Tool Kit
- Vandalism Kit

LIFTING CAPACITIES



SE170W-3A (Bucket 0.75m³, Outrigger and Blade on the ground)

unit : kg

			0m	1.5m	3m	4.5m	6m	7.5m	Max. Reach	
	B	A								
Boom 5.2m + Arm 2.57m	7.5 m	Front Side	-	-	-	-	-	-	*2730 *2730	5471mm
	6 m	Front Side	-	-	-	-	*2720 *2720	-	*2650 2490	6706mm
	4.5 m	Front Side	-	-	-	*3150 *3150	*3050 2970	-	*2650 1990	7436mm
	3 m	Front Side	-	-	*6540 *6540	*4380 *4380	*3650 2820	*3360 1890	*2810 1750	7807mm
	1.5 m	Front Side	-	-	*5040 *5040	*5870 4200	*4350 2670	*3720 1800	*3140 1650	7872mm
	0 m	Front Side	-	-	*5140 *5140	*7010 3930	*4990 2530	*4030 1740	*3750 1680	7639mm
	1.5 m	Front Side	-	*6450 *6450	*7650 7350	*7520 3830	*5360 2460	-	*4430 1890	7077mm
	3 m	Front Side	-	*8190 *8190	*11240 7480	*7400 3850	*5260 2480	-	*5150 2420	6094mm
	4.5 m	Front Side	-	-	*9530 7760	-	-	-	*6480 4140	4401mm
Boom 5.2m + Arm 3.1m	7.5 m	Front Side	-	-	-	-	*2380 *2380	-	*2280 *2280	6067mm
	6 m	Front Side	-	-	-	-	*2280 *2280	-	*2130 *2130	7198mm
	4.5 m	Front Side	-	-	-	-	*2650 *2650	*2740 1970	*2140 1780	7880mm
	3 m	Front Side	-	-	*5730 *5730	*3730 *3730	*3260 2850	*3050 1890	*2260 1570	8231mm
	1.5 m	Front Side	-	-	*7330 *7330	*5320 *4260	*4010 2680	*3450 1790	*2500 1480	8293mm
	0 m	Front Side	-	-	*5210 *5210	*6620 *3950	*4730 2520	*3820 1720	*2960 1500	8072mm
	1.5 m	Front Side	-	*3800 *3800	*7590 7270	*7340 3790	*5210 2430	*4060 1680	*4040 1660	7544mm
	3 m	Front Side	-	*7130 *7130	*11590 7340	*7450 3770	*5320 2410	-	*4680 2060	6633mm
	4.5 m	Front Side	-	*11470 *11470	*10310 7570	*6790 3880	-	-	*5800 3170	5129mm

- Notes : 1. The above loads are in compliance with SAE and ISO Hydraulic Excavator Lift Capacity Standards.
 2. Rated loads do not exceed 87% of hydraulic lifting capacity or 75% of tipping load.
 3. Rated loads marked with an asterisk (*) are limited by hydraulic capacity rather than tipping load.

Under our policy of continuous improvement, we reserve the right to change specifications and design without prior notice. The illustrations do not necessarily show the standard version of the machine.

VOLVO

**Volvo Construction
Equipment Group**

Ref. No. 21 1 435 1137
Printed in Korea 98.08-3
Volvo, Seoul

English
KOR