



345B L Series II UHD



CAT[®]

Engine

Engine Model	CAT [®] 3176C ATAAC diesel engine	
Flywheel Power	239 kW	321 hp

Weights

Operating Weight - Long Undercarriage	50 420 kg	111,180 lb
--	-----------	------------

Drive

Maximum Drawbar Pull	331 kN	74,380 lb
Maximum Travel Speed	4.4 kph	2.7 mph

345B L Series II UHD

Heavy-duty and purpose built for your demolition job.

Booms, Sticks and Working Tools

Optional retrofit boom nose and demolition sticks for demolition at lower heights or normal digging truly make this a versatile machine for your job site. Caterpillar® demolition tools are built to optimize the excavator/tool system. **pg. 3**

Undercarriage

Caterpillar excavator undercarriage is stable, durable and low maintenance. Optional heavy-duty hydraulic variable undercarriage allows usage of heavier demolition tools. **pg. 4**

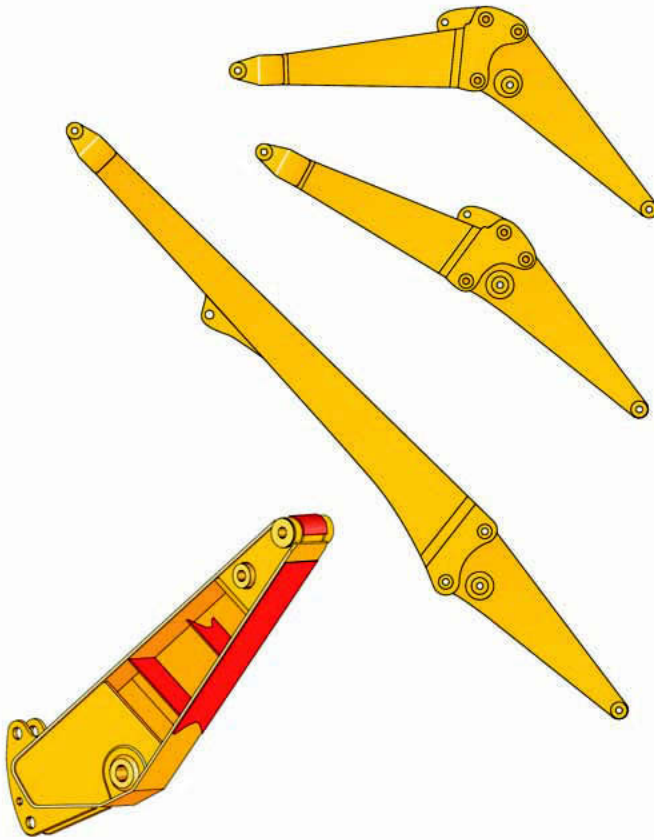
Operator Station

Roomy, quiet, automatically climate controlled cab has excellent sightlines to the work tool to help keep operator fatigue low and production up throughout the entire shift. **pg. 5**



Booms, Sticks and Working Tools

Maximum versatility gets the best out of your machine.



Demolition Sticks. Purpose built demolition sticks have additional internal reinforcements, heavier plates, through hardened bores and a bottom wear plate and match the short boom nose.

Two Piece Main Boom. Two piece main boom with pin-mounted joint between boom foot and boom nose.

Electronic Warning Device. An electronic warning device signals the operator when the main boom gets out of the recommended working range.

Retrofit Capability. Short two-position boom nose on boom foot can be mounted in a straight (demolition) or bent (digging) position, adding to the machine's extreme versatility.

Special Stand. Special stand to support long boom or short retrofit boom when changing configuration.



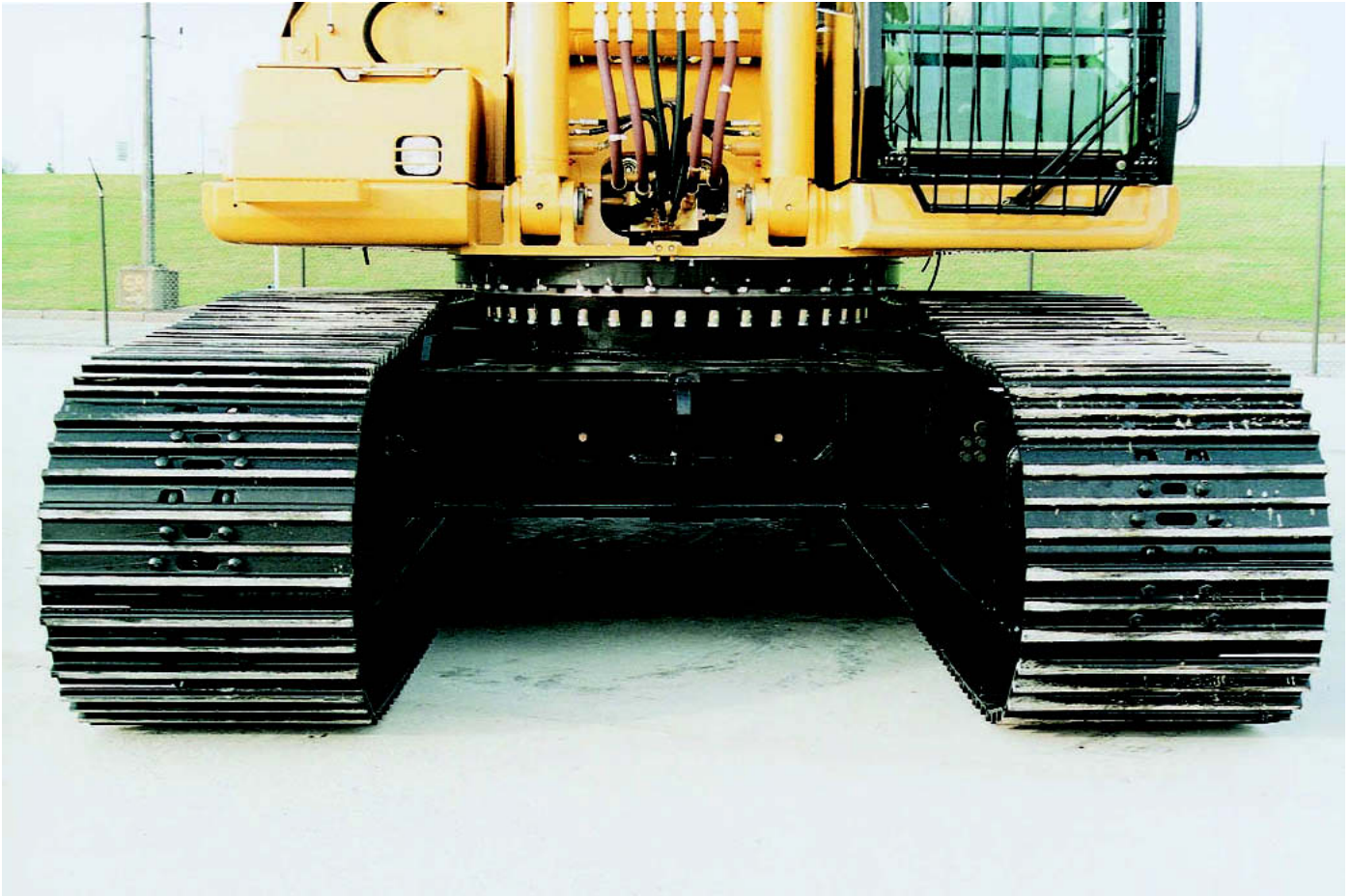
Lowering Control Devices. Lowering control devices are installed on all boom and stick cylinders.



Work Tools. Choose from a variety of Caterpillar work tools such as concrete crushers and pulverizers, steel shears, demolition grapples, hydraulic hammers, quick couplers and multi-processors.

Undercarriage

Durable undercarriage absorbs stresses and provides excellent stability.



The L Undercarriage. The L Undercarriage provides a stable and rugged working platform for demolition.

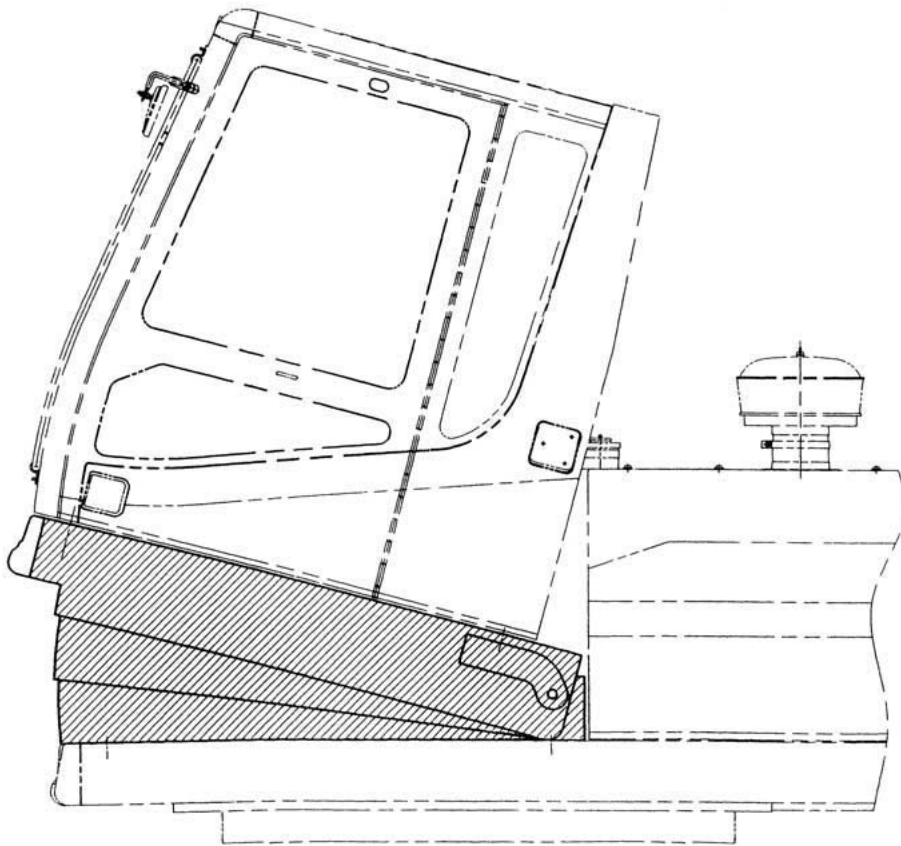
Track Guiding Guards. Full length track guiding guards complete the machine's guarding package.



Optional Hydraulic Adjustable Undercarriage. The optional hydraulic adjustable undercarriage increases the stability by lowering the center of gravity of the machine, resulting in the usage of a bigger tool. The non-bolt joint allows changing from shipping to working width or reverse in less than a minute.

Operator Station

Designed for comfort and ease of operation.



Ergonomic Control Placement.

This operator work station is quiet with ergonomic control placement and convenient adjustments, low lever and pedal effort, ergonomic seat design and highly efficient ventilation. The result is a cab that puts the operator firmly and comfortably in control to enhance productivity.

High Visibility Cab.

High visibility cab with the front window made out of laminated safety glass. For enhanced upward visibility, the top window extends completely to the front. The front window is one-piece and flat with top and bottom mounted wipers. The upper left side door window can slide open. The lower window provides visibility to the tracks and to the ground next to the machine. The rear window offers a good view behind and to the left, aided by a lower hood profile.



Falling Object Guard. Falling object guard on the top and front is standard. Crossbars of top guard are angled in line with sight for enhanced visibility to the tool.

Hydraulically tilting cab support.

Hydraulically tilting cab support allows the cab to be tilted back from 0 to 15 degrees to further improve upward visibility. This optional equipment allows the operator to adopt a more comfortable body position. The tiltable cab support platform, which is operated via a key switch, is a 30 cm (12") high insert between skirt and cab. It also moves the cab 20 cm (8") forward to create the space for a tilt angle of 15 degrees.

Engine

Engine Model	CAT 3176C ATAAC diesel engine	
Flywheel Power	239 kW	321 hp
ISO 9249	239 kW	321 hp
SAE J1349	239 kW	321 hp
EEC 80/1269	239 kW	321 hp
Bore	125 mm	4.92 in
Stroke	140 mm	5.51 in
Displacement	10.3 L	630 in ³

- Ratings at 2000 rpm
- based on standard air conditions of 25° C (77° F) and 99 kPa (29.32 in Hg) dry barometer
- used 35° API gravity fuel having an LHV of 42 780 kJ/kg (18,390 Btu/lb) when used at 30° C (86° F) [ref. a fuel density of 838.9 g/L (7.001 lb/U.S. gal)]
- net power advertised is the power available at the flywheel when the engine is equipped with fan, air cleaner, muffler and alternator
- no engine derating needed up to 2300 m (7,500 ft)

Weights

Operating Weight - Long Undercarriage	50 420 kg	111,180 lb
---------------------------------------	-----------	------------

Service Refill Capacities

Fuel Tank Capacity	720 L	190 gal
Cooling System	45 L	12 gal
Engine Oil	30 L	7.9 gal
Swing Drive	11 L	2.9 gal
Final Drive (each)	15 L	4 gal
Hydraulic System (including tank)	520 L	137 gal
Hydraulic Tank	210 L	55 gal

Sound Performance

Performance	ANSI/SAE J1166
-------------	----------------

Standards

Brakes	SAE J1026, ISO10265	
Cab/FOGS	SAE J1356, ISO 10262	

Hydraulic System

Main Implement System - Maximum Flow (2x)	360 L/min	95.1 gal/min
Maximum Pressure - Implements (Full Time)	34 340 kPa	4,980 psi
Maximum Pressure - Travel	34 340 kPa	4,980 psi
Maximum Pressure - Swing	28 440 kPa	4,130 psi
Pilot System - Maximum flow	41 L/min	10.8 gal/min
Pilot System - Maximum Pressure	4655 kPa	675 psi
Boom Cylinder - Bore	170 mm	6.7 in
Boom Cylinder - Stroke	1550 mm	61 in
Stick Cylinder - Bore	190 mm	7.5 in
Stick Cylinder - Stroke	1758 mm	69.2 in

Drive

Maximum Drawbar Pull	331 kN	74,380 lb
Maximum Travel Speed	4.4 kph	2.7 mph

Swing Mechanism

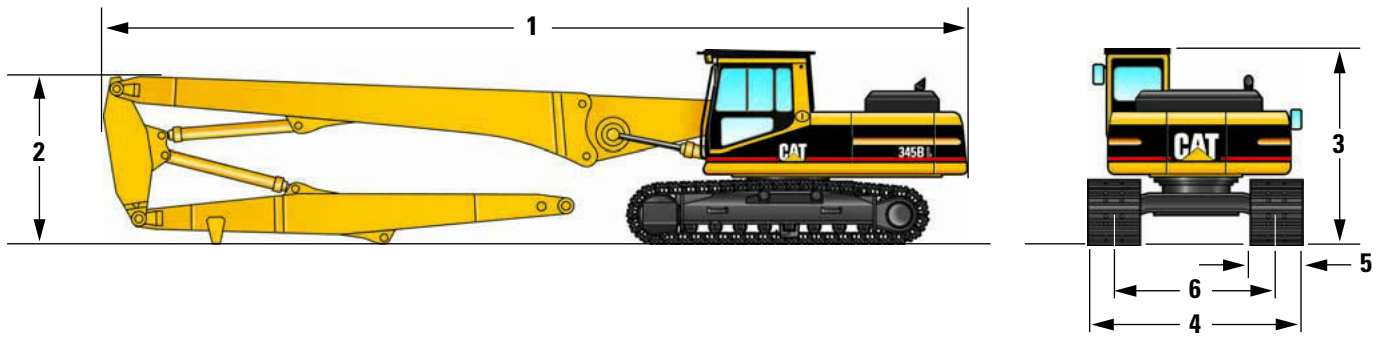
Swing Speed	8.6 RPM	
Swing Torque	149 kN•m	110,260 lb•ft

Track

Standard w/Long Undercarriage - Triple Grouser	600 mm	24 in
--	--------	-------

Dimensions

All dimensions are approximate.



		345B
1	Overall length	17.73 m (58'2")
2	Boom height	3.4 m (11'2")
3	Cab height*	
	with Falling Object Guard	3.67 m (12'0")
	without Falling Object Guard	3.48 m (11'5")
4	Overall width	3.49 m (11'5")
5	Track shoe width	0.60 m (2'0")
6	Track gauge	
	Fully retracted	2.39 m (7'10")
	Fully extended	2.89 m (9'6")
Weight**		51 830 kg (114,280 lb)

* Cab height must be increased by 0.3 m when equipped with hydraulically tiltable cab.

**If equipped with super-long demolition front part, "B" linkage, "High Visibility" Eurocab, falling object guard, heavy duty long undercarriage, triple grouser track shoes and without tool.

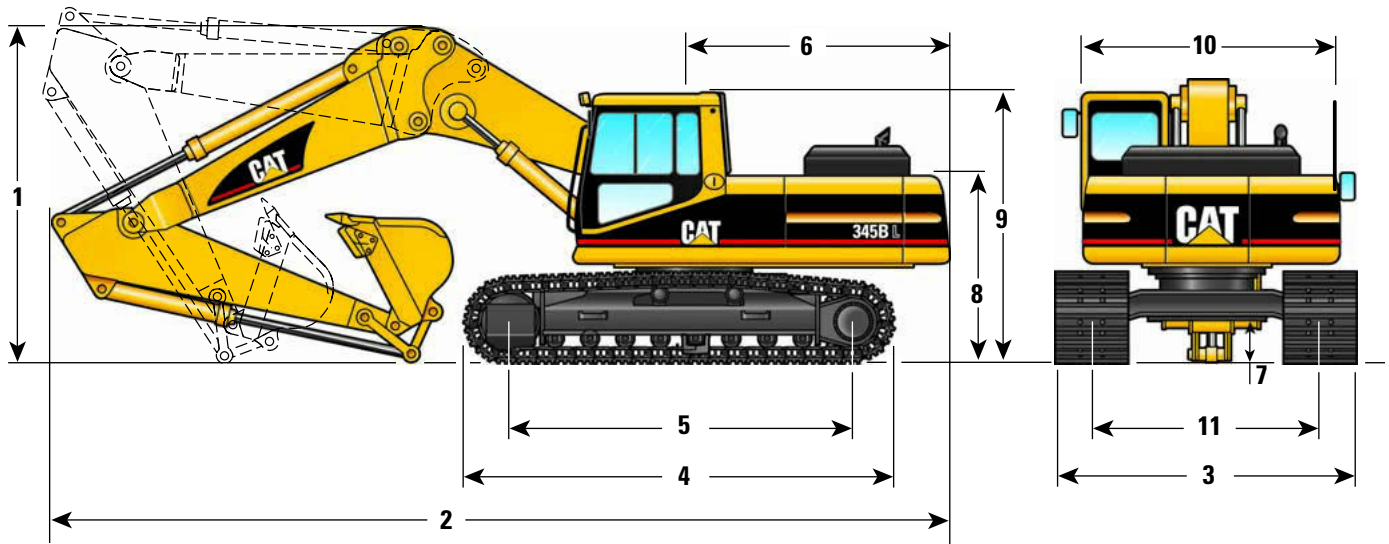
With Hydraulic Wide Undercarriage		345B
4	Overall Width	
	Fully retracted	3.00 m (9'10")
	Fully extended	3.60 m (11'10")
5	Track shoe width	0.60 m (2'0")
6	Track gauge	
	Fully retracted	2.40 m (7'10")
	Fully extended	3.00 m (9'10")
Weight*		57 830 kg (127,520 lb)

* If equipped with ultra-high demolition front part, corresponding linkage, "High Visibility" Eurocab falling object guard, triple grouser track shoes, heavy duty long hydraulic wide undercarriage, and without tool.

For information on specifications for configurations other than those included in the above charts, consult your Caterpillar dealer.

Dimensions and Weights – Straight and Bent Position

All dimensions and weights are approximate.



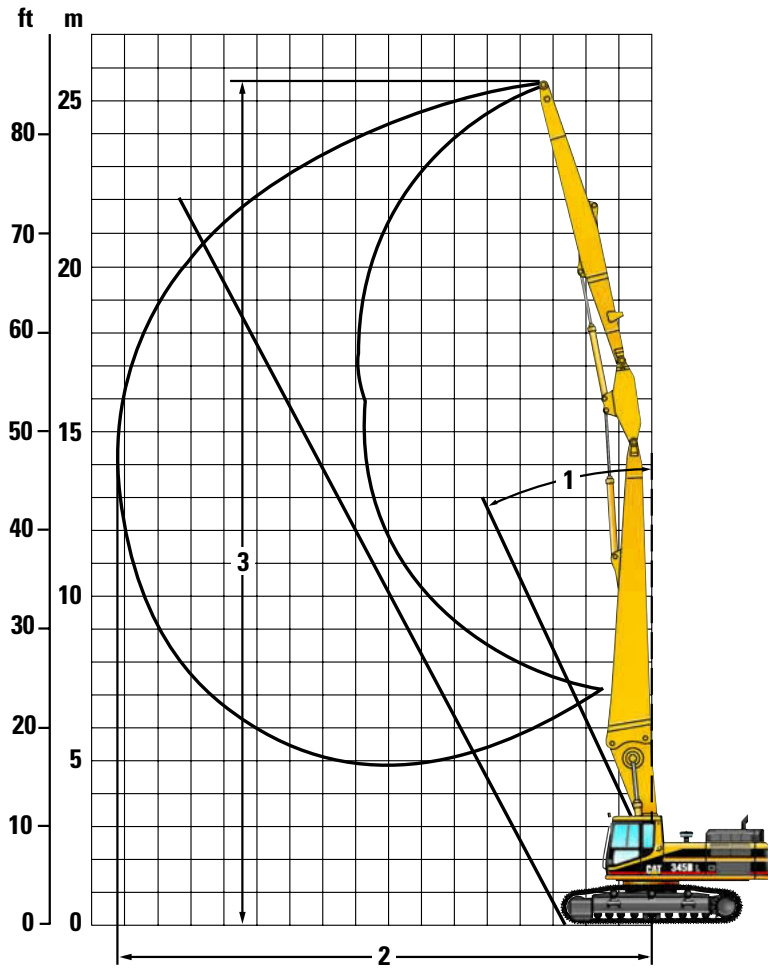
1	Boom Height	345B L	
	Straight Position		
	stick	R3.4T	3.78 m (12'5")
	stick	R4.0T	3.99 m (13'1")
	Bent Position		
	stick	R3.4T	4.21 m (13'10")
	stick	R4.0T	4.06 m (13'4")
2	Overall Length		
	Straight Position		
	stick	R3.4T	12.45 m (40'10")
	stick	R4.0T	12.41 m (40'8")
	Bent Position		
	stick	R3.4T	11.73 m (38'6")
	stick	R4.0T	11.68 m (38'4")
3	Overall width 600 mm shoes		2.99 m (9'10")
4	Track length		5.37 m (17'7")
5	Length to centers of rollers		4.34 m (14'3")
6	Tail swing radius		3.65 m (12'0")
7	Ground clearance		0.71 m (2'4")
8	Body height		2.53 m (8'4")
9	Cab height		
	with Falling Object Guard		3.67 m (12'0")
	without Falling Object Guard		3.48 m (11'5")
10	Body width		2.99 m (9'10")
11	Track gauge		2.39 m (7'10") to 2.89 m (9'6")
	Weight*		50 420 kg (111,180 lb)
	With Hydraulic Wide Undercarriage (if equipped)		345B L
3	Overall width 600 mm shoes		
	Shipping width		3.00 m (9'10")
	Working width		3.60 m (11'10")
11	Track gauge		
	Fully retracted		2.40 m (7'10")
	Fully extended		3.00 m (9'10")
	Weight**		56 420 kg (126,400 lb)

* If equipped with retrofit-straight boom front part, linkage, "High Visibility" Eurocab, falling object guard, heavy duty long undercarriage, 600 mm (24") triple grouser track shoes, stick and bucket [2.0 m³ (2.6 yd³) on 345B].

**If equipped with retrofit-bent boom front part, "High Visibility" Eurocab, falling object guard, linkage, 600 mm (24") triple grouser track shoes, stick, heavy duty long hydraulic wide undercarriage, bucket: [2.0 m³ (2.6 yd³) on 345B].

For information on specifications for configurations other than those included in the above charts, consult your Caterpillar dealer.

Working Ranges



345B

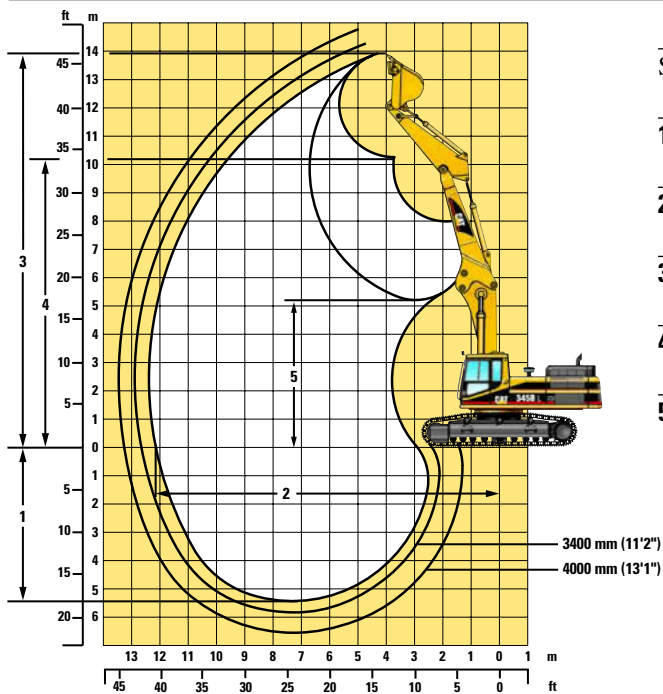
1	Maximum allowable angle from vertical	25°
2	Maximum allowable horizontal reach	16.1 m (52'10")
3	Maximum vertical pin height	25.6 m (84'0")

Maximum tool weight*

	Over Front	Over Side
with L undercarriage	3000 kg (6600 lb)	2000 kg (4400 lb)
with hydraulic wide gauge undercarriage	3000 kg (6600 lb)	2700 kg (5950 lb)

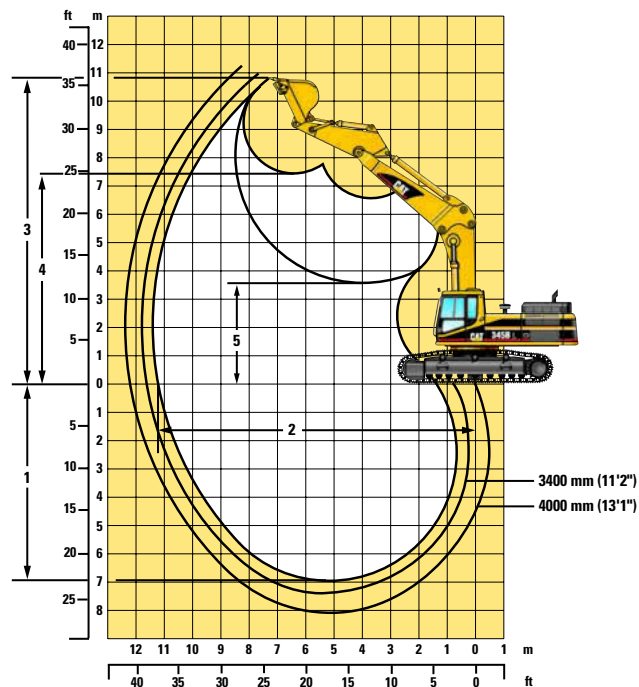
* Design of the mounting bracket is critical. Weight includes mounting bracket and Quick Coupler (if any).

345B L Working Ranges – Straight Position



	R4.0	R3.4
Stick Length	4.0 m (13'1")	3.4 m (11'2")
1 Maximum Digging Depth	6.51 m (21'4")	5.86 m (19'3")
2 Maximum Reach at Ground Level	13.23 m (43'5")	12.64 m (41'6")
3 Maximum Cutting Height	14.79 m (48'6")	14.27 m (46'10")
4 Maximum Loading Height	11.48 m (37'8")	10.53 m (34'6")
5 Minimum Loading Height	4.1 m (13'5")	4.74 m (15'6")

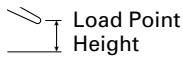
345B L Working Ranges – Bent Position



	R4.0	R3.4
Stick Length	4.0 m (13'1")	3.4 m (11'2")
1 Maximum Digging Depth	8.07 m (26')	7.42 m (24'4")
2 Maximum Reach at Ground Level	12.20 m (40')	11.60 m (38'1")
3 Maximum Cutting Height	11.24 m (36'10")	10.97 m (36')
4 Maximum Loading Height	7.75 m (25'5")	7.51 m (24'8")
5 Minimum Loading Height	2.33 m (7'8")	2.98 m (9'9")

345B L Lift Capacities – Straight Position

4.0 m (13'2") stick (150-4711) with bucket (136-6242)



Load at Maximum Reach



Load Radius Over Front



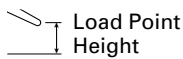
Load Radius Over Side

Stick Length m ft	Unit	3.0 m/10.0 ft		4.5 m/15.0 ft		6.0 m/20.0 ft		7.5 m/25.0 ft		9.0 m/30.0 ft		10.5 m/35.0 ft		m ft		
		Over Front	Over Side	Over Front	Over Side	Over Front	Over Side	Over Front	Over Side	Over Front	Over Side	Over Front	Over Side			
10.5 m 35.0 ft	kg lb							*7900 *18,000	*7900 *18,000					*4800 *11,700	*4800 *11,700	8.60 27.67
9.0 m 30.0 ft	kg lb							*8400 *19,900	*8400 *19,900	*7400 *16,400	6900 14,500			*4300 *10,400	*4300 *10,400	9.84 31.95
7.5 m 25.0 ft	kg lb					*8300 *19,700	*8300 *19,700	*8900 *21,000	*8900 *21,000	*7700 *18,400	6900 14,600	*5500 4500		*4000 *9800	*4000 *9800	10.72 34.99
6.0 m 20.0 ft	kg lb			*9400 *21,700	*9400 *21,700	*10 200 *23,700	*10 200 *23,700	*9600 *22,600	*9600 *22,600	*7800 *18,700	6600 14,100	*6500 *15,600	4500 9500	*3900 *9600	3500 7800	11.34 37.10
4.5 m 15.0 ft	kg lb			*17 900 *41,800	*17 900 *41,800	*12 800 *30,200	*12 800 *28,500	*9900 *23,500	8900 19,000	*8000 *19,000	6200 13,200	*6500 *15,600	4300 9100	*4000 *9600	3100 6900	11.73 38.44
3.0 m 10.0 ft	kg lb					*13 300 *31,600	11 600 25,000	*10 100 *24,100	8000 17,200	*8000 *19,200	5700 12,100	*6400 *15,400	4100 8600	*4100 *9900	2900 6300	11.92 39.09
1.5 m 5.0 ft	kg lb					*13 200 *31,400	10 200 22,000	*10 000 *24,000	7200 15,500	*7800 *18,800	5200 11,200	*6100 *14,700	3800 8100	*4300 *10,500	2800 6100	11.91 39.09
0.0 m 0.0 ft	kg lb			*9200 *23,300	*9200 *23,300	*12 200 *29,400	9400 20,200	*9500 *22,700	6600 14,300	*7300 *17,700	4900 10,400	*5600 *13,400	3600 7600	*3800 *9700	2800 6200	11.71 38.43
-1.5 m -5.0 ft	kg lb	*6200 *15,300	*6200 *15,300	*12 700 *31,000	*12 700 *31,000	*10 500 *25,600	9100 19,500	*8300 *20,100	6300 13,600	*6400 *15,500	4600 9900	*4500 *10,800	3500 7500	*3100 *8000	3100 6700	11.31 37.08
-3.0 m -10.0 ft	kg lb			*9100 *22,600	*9100 *22,600	*8100 *19,900	*8100 19,500	*6500 *15,900	6300 13,500	*4800 *11,700	4600 9900	*2500 *5600	*2500	*2100 *5600	*2100 *5600	10.68 34.95
-4.5 m -15.0 ft	kg lb					*4900 *12,200	*4900 *12,200	*3900 *9500	*3900 *9500	*2200	*2200					

* Indicates that the load is limited by hydraulic capacity rather than tipping capacity. Lift capacity ratings are based on SAE J/ISO 10567 standard. Rated loads do not exceed 87% of hydraulic lifting capacity or 75% of tipping capacity.

345B L Lift Capacities – Straight Position

3.4 m (11'2") stick (150-5994) with bucket (136-6242)



Load at Maximum Reach



Load Radius Over Front



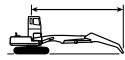
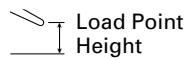
Load Radius Over Side

Stick Length m ft	Unit	4.5 m/15.0 ft		6.0 m/20.0 ft		7.5 m/25.0 ft		9.0 m/30.0 ft		10.5 m/35.0 ft		m ft		
		Over Front	Over Side	Over Front	Over Side	Over Front	Over Side	Over Front	Over Side	Over Front	Over Side			
10.5 m 35.0 ft	kg lb			*10 100 *22,200	*10 100 *22,200	*7300 *16,300	*7300 *16,300					*6100 *13,700	*6100 *13,700	7.68 24.58
9.0 m 30.0 ft	kg lb			*9900 *22,100	*9900 *22,100	*8600 *18,800	*8600 *18,800	*5800 *12,800	5600 12,200			*5300 *11,900	*5300 *11,900	9.05 29.32
7.5 m 25.0 ft	kg lb			*10 500 *23,200	*10 500 *23,200	*8700 *18,900	*8700 *18,900	*7000 *15,200	5800 12,200			*5000 *11,100	4100 9200	10.00 32.61
6.0 m 20.0 ft	kg lb	*15 200 *31,500	*15 200 *31,500	*11 500 *25,000	*11 500 *25,000	*8900 *19,300	8400 18,100	*7000 *15,300	5500 11,700	*5500 *12,100	3400 7200	*4800 *10,800	3200 7200	10.66 34.87
4.5 m 15.0 ft	kg lb			*11 900 *25,900	11 400 24,700	*9000 *19,600	7500 16,200	*7000 *15,300	5100 10,800	*5400 *11,700	3300 6900	*4800 *10,700	2700 6000	11.08 36.30
3.0 m 10.0 ft	kg lb			*11 900 *26,000	9600 20,800	*8900 *19,500	6600 14,200	*6900 *15,000	4500 9700	*5200 *11,300	3000 6400	*4200 *9500	2400 5300	11.28 36.99
1.5 m 5.0 ft	kg lb			*11 200 *24,600	8300 17,900	*8500 *18,600	5800 12,400	*6500 *14,100	4100 8700	*4800 *10,200	2800 5900	*3700 *8200	2300 5000	11.27 36.98
0.0 m 0.0 ft	kg lb			*9800 *21,600	7600 16,400	*7700 *16,700	5300 11,300	*5800 *12,500	3700 8000	*4000 *8300	2700 5600	*3000 *6700	2300 5200	11.06 36.28
-1.5 m -5.0 ft	kg lb	*8100 *18,100	*8100 *18,100	*7800 *17,100	7500 16,000	*6200 *13,600	5100 10,800	*4600 *9800	3600 7700	*2400	*2400	*2100 *4700	*2100 *4700	10.63 34.85
-3.0 m -10.0 ft	kg lb	*4500 *10,100	*4500 *10,100	*5100 *11,000	*5100 *11,000	*4100 *8800	*4100 *8800	*2600 *5200	*2600 *5200			*900 *1900	*900 *1900	9.95 32.57

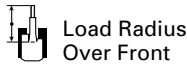
* Indicates that the load is limited by hydraulic capacity rather than tipping capacity. Lift capacity ratings are based on SAE J/ISO 10567 standard. Rated loads do not exceed 87% of hydraulic lifting capacity or 75% of tipping capacity.

345B L Lift Capacities – Bent Position

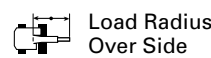
4.0 m (13'2") stick (150-4711) with bucket (136-6242)



Load at Maximum Reach



Load Radius Over Front



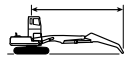
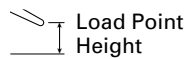
Load Radius Over Side

Stick Length	Load Point Height	1.5 m/5.0 ft		3.0 m/10.0 ft		4.5 m/15.0 ft		6.0 m/20.0 ft		7.5 m/25.0 ft		9.0 m/30.0 ft		10.5 m/35.0 ft		Stick Length		m	ft		
		Over Front	Over Side	Over Front	Over Side	Over Front	Over Side	Over Front	Over Side	Over Front	Over Side	Over Front	Over Side	Over Front	Over Side	Over Front	Over Side				
9.0 m	kg																				
30.0 ft	lb																		*4100	*4100	8.53
																			*9300	*9300	27.60
7.5 m	kg												*6200	*6200					*4000	*4000	9.54
25.0 ft	lb												*12,200	*12,200					*8800	*8800	31.08
6.0 m	kg												*6400	*6400					*4000	*4000	10.23
20.0 ft	lb												*14,000	*14,000					*8800	*8800	33.45
4.5 m	kg										*7900	*7900	*6700	6600	*5200	4500			*4100	*4100	10.66
15.0 ft	lb										*17,200	*17,200	*14,800	14,100					*9100	*9100	34.93
3.0 m	kg					*15 600	*15 600	*11 100	*11 100	*8700	*8700	*7200	6200	*6100	4300	*4400	3900				10.87
10.0 ft	lb					*33,300	*33,300	*24,100	*24,100	*18,900	*18,900	*15,700	13,200	*12,800	9100	*9700	8700				35.65
1.5 m	kg					*17 600	*17 600	*12 300	11 500	*9400	8000	*7600	5700	*6300	4100	*4800	3700				10.86
5.0 ft	lb					*38,300	*38,200	*26,700	24,600	*20,400	17,100	*16,500	12,100	*13,600	8600	*10,700	8200				35.64
0.0 m	kg			*8300	*8300	*18 200	16 100	*12 900	10 400	*9800	7300	*7800	5300	*6200	3900	*5500	3700				10.64
0.0 ft	lb			*18,900	*18,900	*39,800	34,700	*28,100	22,300	*21,300	15,600	*16,900	11,300			*12,100	8200				34.92
-1.5 m	kg	*9000	*9000	*12 700	*12 700	*17 700	15 500	*12 900	9800	*9800	6900	*7600	5000			*6200	4000				10.20
-5.0 ft	lb	*20,200	*20,200	*28,800	*28,800	*38,700	33,300	*28,000	21,000	*21,300	14,700	*16,600	10,700			*13,700	8800				33.42
-3.0 m	kg	*13 600	*13 600	*18 100	*18 100	*16 300	15 500	*12 100	9600	*9200	6700	*7000	4900			*6200	4500				9.49
-10.0 ft	lb	*30,500	*30,500	*40,900	*40,900	*35,500	33,200	*26,300	20,600	*20,000	14,400	*14,900	10,600			*13,800	10,000				31.04
-4.5 m	kg			*18 700	*18 700	*13 800	*13 800	*10 400	9800	*7800	6800					*6100	5700				8.46
-15.0 ft	lb			*40,600	*40,600	*29,900	*29,900	*22,500	21,000	*16,600	14,700					*13,500	12,700				27.55
-6.0 m	kg					*9700	*9700	*7100	*7100							*5400	*5400				6.95
-20.0 ft	lb					*20,500	*20,500	*14,900	*14,900							*11,800	*11,800				22.41

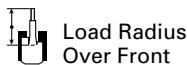
* Indicates that the load is limited by hydraulic capacity rather than tipping capacity. Lift capacity ratings are based on SAE J/ISO 10567 standard. Rated loads do not exceed 87% of hydraulic lifting capacity or 75% of tipping capacity.

345B L Lift Capacities – Bent Position

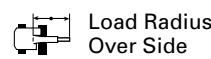
3.4 m (11'2") stick (150-5994) with bucket (136-6242)



Load at Maximum Reach



Load Radius Over Front



Load Radius Over Side

Stick Length	Load Point Height	3.0 m/10.0 ft		4.5 m/15.0 ft		6.0 m/20.0 ft		7.5 m/25.0 ft		9.0 m/30.0 ft		Stick Length	m	ft	
		Over Front	Over Side	Over Front	Over Side	Over Front	Over Side	Over Front	Over Side	Over Front	Over Side				
9.0 m	kg							*7300	*7300						
30.0 ft	lb												*5900	*5900	7.73
													*11,500	*11,500	24.93
7.5 m	kg							*7500	*7500					*5600	8.83
25.0 ft	lb							*14,300	*14,300					*10,800	28.74
6.0 m	kg							*7900	*7900	*6800	*6800			*5600	9.57
20.0 ft	lb							*14,900	*14,900	*12,900	12,500			*10,800	31.29
4.5 m	kg					*14 800	*14 800	*10 700	*10 700	*8500	*8500	*7000	*7000	*5800	10.04
15.0 ft	lb					*32,600	*32,600	*22,600	*22,600	*16,100	*16,100	*13,400	11,800	*11,100	32.87
3.0 m	kg			*17 300	*17 300	*11 900	*11 900	*9100	*9100	*7400	6700	*6200	4700		10.25
10.0 ft	lb			*32,600	*32,600	*22,600	*22,600	*17,300	16,000	*14,000	10,800	*11,900	7900		33.63
1.5 m	kg			*18 600	*18 600	*12 800	*12 800	*9600	8800	*7600	6100	*6300	4400		10.25
5.0 ft	lb			*35,200	*35,200	*24,300	*24,300	*18,300	14,200	*14,400	9800	*12,300	7300		33.63
0.0 m	kg			*18 500	18 200	*13 100	11 600	*9800	8000	*7600	5600	*6400	4400		10.01
0.0 ft	lb			*35,100	29,400	*24,900	18,600	*18,700	12,800	*14,500	9000	*12,400	7300		32.86
-1.5 m	kg	*15 400	*15 400	*17 300	*17 300	*12 700	11 000	*9600	7500	*7200	5400	*6400	4800		9.54
-5.0 ft	lb	*30,500	*30,500	*32,900	28,800	*24,100	17,700	*18,100	12,100	*13,600	8600	*12,500	8000		31.26
-3.0 m	kg	*20 000	*20 000	*15 200	*15 200	*11 400	11 000	*8600	7500			*6300	5800		8.78
-10.0 ft	lb	*38,100	*38,100	*28,900	*28,900	*21,700	17,700	*16,100	12,100			*12,300	9600		28.70
-4.5 m	kg	*14 800	*14 800	*11 800	*11 800	*9000	*9000	*6200	*6200			*5800	*5800		7.65
-15.0 ft	lb	*27,900	*27,900	*22,300	*22,300	*16,800	*16,800					*11,300	*11,300		24.87

* Indicates that the load is limited by hydraulic capacity rather than tipping capacity. Lift capacity ratings are based on SAE J/ISO 10567 standard. Rated loads do not exceed 87% of hydraulic lifting capacity or 75% of tipping capacity.

Standard Equipment

Standard equipment may vary. Consult your Caterpillar dealer for specifics.

Air precleaner	Combined auxiliary hydraulic circuit
Alternator, 52-amp	Counterweight
Automatic engine speed control	Door locks and caps locks with Caterpillar one-key security system
Automatic swing parking brake	Falling object guard, top and front
Auxiliary outlet port on tank with screen	Fine swing control
Bucket linkage	Full length track guiding guards
C family	Fully pressurized hydraulic system
Engine:	Heavy-duty bottom guards
Caterpillar 3176C ATAAC diesel engine with 24-volt electric starting and air intake heater	Heavy-duty underhouse
High visibility cab	High ambient cooling
Air conditioner with automatic climate control	Hydraulic neutralizer lever for all controls
Ashtray with cigar lighter	Lights, working
Coat hook	Frame mounted, one
Drink holder	Boom, both sides
Floor mat	Cab mounted, two
Heater and defroster	Mirrors, frame and cab
Horn	Muffler
Instrument panel with gauges	Pre-start monitoring system
Gauges and indicator lights for fuel level, coolant temperature and hydraulic oil temperature	Polycarbonate and glass windows
Light, interior	Power Mode Selector
Literature compartment	Power Train
Lowering control devices	Return filter clogging alarm
Low fuel indicator light	Water separator
Joysticks, adjustable pilot-operated	Work Mode Selector
Prewired radio mounting	Undercarriage
Positive filtered ventilation	Hydraulic track adjusters
Seat belt, retractable	Track-type sealed undercarriage
Seat, suspension, fully adjustable	600 mm (24") triple-grouser shoes
Stationary skylight	
Storage compartment suitable for a lunch box cooler	
Travel control pedals	
Two-speed auto shift travel	
Windshield wiper and washer	

Optional Equipment

Optional equipment may vary. Consult your Caterpillar dealer for specifics.

Hydraulically tilting cab support
Refueling pump
Starting aid, cold weather
Starting aid, ether
Straight travel third pedal option
Sun screen

Track:
600 mm (24") heavy-duty double-grouser shoes
Undercarriage
Hydraulic wide gauge

345B L Series II UHD

For more complete information on Cat products, dealer services, and industry solutions, visit us on the web at www.CAT.com

© 2002 Caterpillar
Printed in U.S.A.

AEHQ5476 (2-02)

Materials and specifications are subject to change without notice.
Featured machines in photos may include additional equipment.
See your Caterpillar dealer for available options.

CATERPILLAR[®]