

B

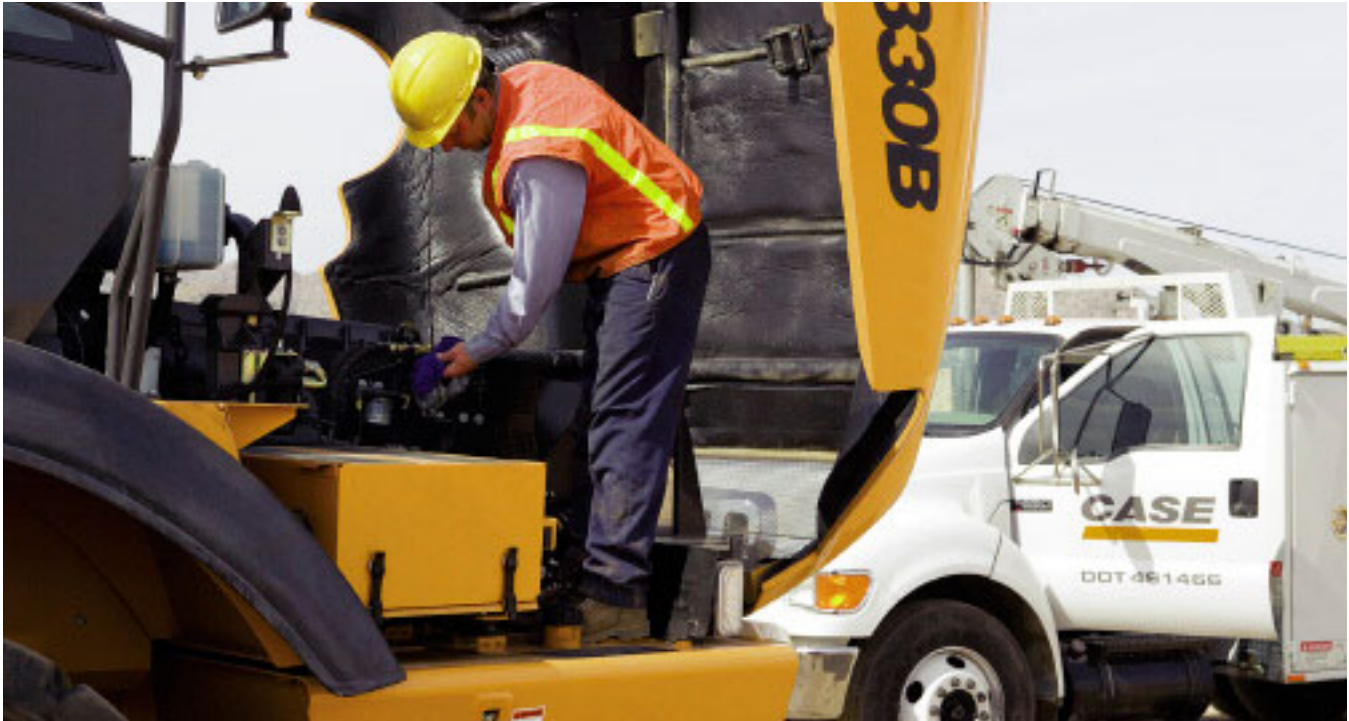
B SERIES ARTICULATED TRUCKS
327B | 330B | 335B | 340B

CASE
CONSTRUCTION



B Series

CUSTOMER SUPPORT



Your Case dealer provides product support that keeps your machine on the jobsite.

The Case dealer: Your professional partner

Your success starts with world-class Case machinery and attachments. Your Case dealer will help you work smarter and faster by selecting equipment that delivers performance and operator comfort. Your dealer has the knowledge and experience necessary to help you choose the right attachments so you can...

- Work faster and extend equipment life.
- Increase machine utilization.
- Increase your capabilities.

Let your Case dealer service your machine on the jobsite. You'll be back on the job faster. Advantages include...

- Responsive job site service to keep your equipment running.
- Increase machine uptime.
- Certified service staff and improved parts availability.

Manage your equipment better. The Case Care PlusPacSM is a prepaid maintenance plan designed especially for your machine. Factory-trained Case technicians perform routine

inspections and regular service to prevent problems. Other plans, such as the Machine Protection PlusPacSM, can be purchased to extend protection beyond the base warranty. Add the GlobalTRACS[®] Fleet Management Communications System to give you the information to manage your fleet while protecting it against theft.

Ask your local Case dealer about adding value to your machine and peace of mind to your work day with these helpful products.



POWERTRAIN

Power to pull through all conditions

Engines

Case articulated trucks are powered by electronically controlled, Family IV diesel engines for clean, efficient operation. These engines take advantage of the latest technology with variable geometry turbochargers that provide fast response and high torque rise in the toughest conditions, to power through adverse conditions. Meeting the latest emission regulations are not an issue with the high pressure fuel injection systems that efficiently mixes fuel and air for a complete combustion.

The 10 L Case turbocharged Tier III engine in the 327B generates 315 gross horsepower (235 kW) and 349 gross horsepower (260 kW) in the 330B to move more tons of material per hour. With rated operating loads to 27 and 30 tons, respectively, the Case 327B and 330B have the capacity and horsepower to handle demanding job requirements.

For early completion of those larger jobs, the electronically-controlled 13 L Case Engines on the 335B and 340B articulated trucks generate 410 and 456 gross horsepower (306 and 340 kW) respectively. With more horsepower and increased payload capacity, the Case 335B and 340B powerful trucks are ideal for demanding earth moving, quarry and road construction applications.



The 327B and 330B are equipped with a 10 L (659 cu in) and the Case 335B and 340B are equipped with a 13 L (793 cu in) electronically controlled Case diesel engine with precise high-pressure injection system for excellent fuel economy and favorable operating costs.

Tier III certified power fully serviced and supported by the Case two-year 2,000-hour engine warranty.

Transmission

An electronically controlled transmission gives the operator the option of fully automatic or powershift control of six forward and three reverse gears. Modulated and precise clutch engagement provides smooth shifting for extended component life, reduced operator fatigue and maximized fuel economy, all lowering the cost per ton of material moved.

Drive line

When it comes to tough conditions, Case articulated trucks are ready for the challenge. The standard, limited-slip powertrain automatically transfers power from the wheel that slips to the one that grips, providing greater traction. Combine limited-slip

axles with Longitudinal Diff Lock Control for 6 x 4 operation, or front and rear axles for 6 x 6 operation to pull through extreme soil and hilly conditions, enabling operators to work longer seasons in bad weather.

All Case articulated trucks have an integrated differential mounted directly to the transmission. This eliminates a drive shaft and reduces the amount of wear parts, which means less cost for you.

Perfectly matched drive train components, electronic control and synchronized operation make it possible for Case Articulated Trucks to conquer any haul road or dump site.



B Series

B SERIES ARTICULATED TRUCKS

Wider rear frame

Get greater material retention, more equal weight distribution between the front and rear, and increased stability under load.

Scow angle

Long scow angle on the bed is designed for easier transition of material when dumping.

Tailgate options

Case Articulated Trucks offer mechanical tailgate options.

Longitudinal diff lock control

Engages rear tandems for 6 x 4 operation, or front and rear axles for 6 x 6 operation to pull through extreme soil and hilly conditions.

Limited-slip drive axles

Automatically transfer power from the wheel that slips to the one that grips for greater traction.



Lift cylinders

Internally mounted lift cylinders provide maximum protection from potential damage.

Walking beam suspension

Tandem walking beam suspension is mounted directly to rear frame for long-term reliability and durability.

Bed options

Pre-fabricated beds for body heating kits (optional rock bed available).



Oscillation joint

Oscillation joint and independent rear tandems provide outstanding handling capabilities in rough terrain.



Diagnostic ports

The diagnostic ports provide quick check points of critical hydraulic systems.



Tilting cab

Our tilting cab provides access to the drivelines, transmission, hydraulic lines and valves.



Comfortable cab

Ergonomically designed cab delivers improved operator comfort. Wide steps offer easy cab entry and exit.

Front hood

The long, sloping front hood increases visibility and tilts forward for easy engine access and maintenance.



Swing-out fenders

Case exclusive swing-out fenders provide greater serviceability for tires or hydraulic components.

Belly pans

Standard belly pans protect critical components.

Integrated differential

Our integrated transmission-mounted differential transfers power to front wheel ends.

Low tank mounting

Oil and fuel tanks are mounted low for easy access and a low center of gravity.

Lube for life bushings

Front chassis lubrication has been eliminated with lube for life bushings.

B Series

OPERATOR ENVIRONMENT

Operator comfort is key to productivity

Case articulated trucks feature a best-in-class operator environment. There is no better view from the operator's seat of any articulated truck, thanks to the sloping hood. In addition, large windows and floor-to-ceiling glass doors provide excellent visibility to the complete job site. Flat glass throughout the cab eliminates distortion and an optional rear-view camera and monitor make it easy to maneuver to either the loading or dumping locations.

Centrally mounted, the ROPS/FOPS cab structure is iso-mounted with heavy rubber bushings, pressurized and soundproofed to provide the ultimate in working environments. The tall, wide doorway provides easy entrance and exiting. The fully adjustable air suspension seat, tilting steering wheel and standard air conditioning with numerous diffusers for complete operator comfort.

The operator interface with the front console is enhanced with large analog, easy-to-read gauges and recognizable warning lights. The layout of the right-hand console is made with easy

operation and productivity in mind. The low-effort control level commands the transmission, dump body and braking systems.



The right-hand console is designed to provide better operator control. Among its operator-friendly features are: push-button change from manual to automatic shift and bump shifting.

SUSPENSION AND DUMP BODY

Suspension

All B Series Case models offer true independent front suspension with both vertical and oscillating movement. They incorporate long-stroke cylinders for excellent dampening. This gives the operator a smooth ride, which is particularly noticeable on the return leg of a high speed haul. The rear suspension of all Case articulated trucks is designed with fewer moving parts to reduce owning and operating costs. The dual, cast-steel, rear suspension beams are secured directly under the rear frame for trouble-free operation, long-term. In addition, the rear suspension design provides superior levels of traction and stability for improved performance.

Wide frame

The wide rear frame on Case articulated trucks, delivers greater material retention and more equal weight distribution between the front and rear axles. This frame width makes it possible to mount the tandem walking beams directly

to the frame, resulting in fewer parts and greater reliability and durability. It also allows for internal mounting of lift cylinders, between the frame rails where they are protected. With the lift cylinders mounted directly under the dump body, rather than on an angle, Case B Series Articulated Trucks take full advantage of hydraulic power for an efficient and controlled dump cycle.

Dump Body

The wider rear frame on the Case B Series Articulated Trucks makes a wider dump body possible. This means that Case articulated trucks carry the material lower. Providing a lower center of gravity improves stability under load for better operator control and comfort.

All Case dump bodies are built to accept body heating kits. They can be equipped with tailgates and extensions to match the machine to the application.

The wide chassis on the B Series trucks makes possible the use of a wider dump body. This provides equal weight distribution between the front and rear axles, lowers the load's center of gravity, improves stability when hauling.



SERVICEABILITY

Spend less time on daily checks

The old saying “time is money” was never more true than it is today. The less time required for daily service, the more time there is for on-the-job productivity. Case articulated trucks are designed with convenient maintenance in mind, making it much easier for the operator to spend more time on productivity and less time on routine maintenance and service.

In addition to a power-tilt engine hood, the 300 Series trucks feature centralized lubrication for axles, articulation and oscillation joints, centralized hydraulic pressure check ports, and sight gauges for fluid level check. Industry-exclusive swing-out fenders provide complete access for easy

field servicing of the front tires. By removing inside panels, access to hydraulic lines and components has never been easier.

Standard on all B Series Articulated Trucks, the industry-leading tilt cab feature provides service technicians with unrivaled access to the drivelines, transmission, hydraulic lines and valves.

Chassis lubrication tasks have been eliminated with lubed-for-life bushings throughout. This makes maintenance easier and increases reliability.

All Case Articulated Trucks feature an EDC monitoring system on the front console that displays automatic systems updates on fluid levels, temperatures and other important maintenance checks when the truck

is started, significantly reducing the amount of time required for daily maintenance. A trip computer records important data and monitors such vital information as average operating temperatures, operating time, number of dump cycles, and fuel consumption for real time production monitoring.

These serviceability features minimize downtime.



An available automatic lubrication system continuously greases all lubrication points from a central distribution point, eliminating the need for manual daily greasing. An alarm sounds when the grease level reaches the re-fill level.

The forward-tilting hood allows complete access to the engine and cooling components.



Standard on all Case articulated trucks, the industry-leading tilt cab feature provides service technicians with unrivaled access to the drivelines, transmission, hydraulic lines and valves. The hydraulically lifted cab tilts 51 degrees to provide full access to the transmission and hydraulic components and lines.

**B SERIES ARTICULATED TRUCKS
QUICK SPECS**

327B

Engine	300 net hp (224 kW)
Payload	51,147 lb (23 200 kg)
Heaped capacity	18 cu yd (14.5 cu m)
Total laden weight	100,905 lb (45 770 kg)

330B

Engine	334 net hp (249 kW)
Payload	62,082 lb (28 160 kg)
Heaped capacity	23 cu yd (17.6 cu m)
Total laden weight	111,840 lb (50 730 kg)

335B

Engine	380 net hp (284 kW)
Payload	69,445 lb (31 500 kg)
Heaped capacity	26.2 cu yd (20.2 cu m)
Total laden weight	132,277 lb (60 000 kg)

340B

Engine	426 net hp (318 kW)
Payload	79,366 lb (36 000 kg)
Heaped capacity	28.8 cu yd (22.2 cu m)
Total laden weight	143,300 lb (65 000 kg)

NOTE: All engines meet current EPA emission regulations.

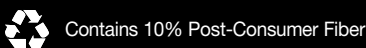
NOTE: All specifications are stated in accordance with SAE Standards or Recommended Practices, where applicable.

IMPORTANT: Case Construction Equipment Inc. reserves the right to change these specifications without notice and without incurring any obligation relating to such change. Availability of some models and equipment builds vary according to the country in which the equipment is used. The illustrations and text may include optional equipment and accessories and may not include all standard equipment. Your Case dealer/distributor will be able to give you details of the products and their specifications available in your area.



Always read the Operator's Manual before operating any equipment. Inspect equipment before using it, and be sure it is operating properly. Follow the product safety signs and use any safety features provided.

© 2007 CNH America LLC. All rights reserved. Case is a registered trademark of CNH America LLC. Any trademarks referred to herein, in association with goods and/or services of companies other than CNH America LLC, are the property of those respective companies. Printed in U.S.A.



327B



330B



335B



340B