

1404

# Setting standards

Wacker Neuson Compact Excavator 1404



**WACKER  
NEUSON**

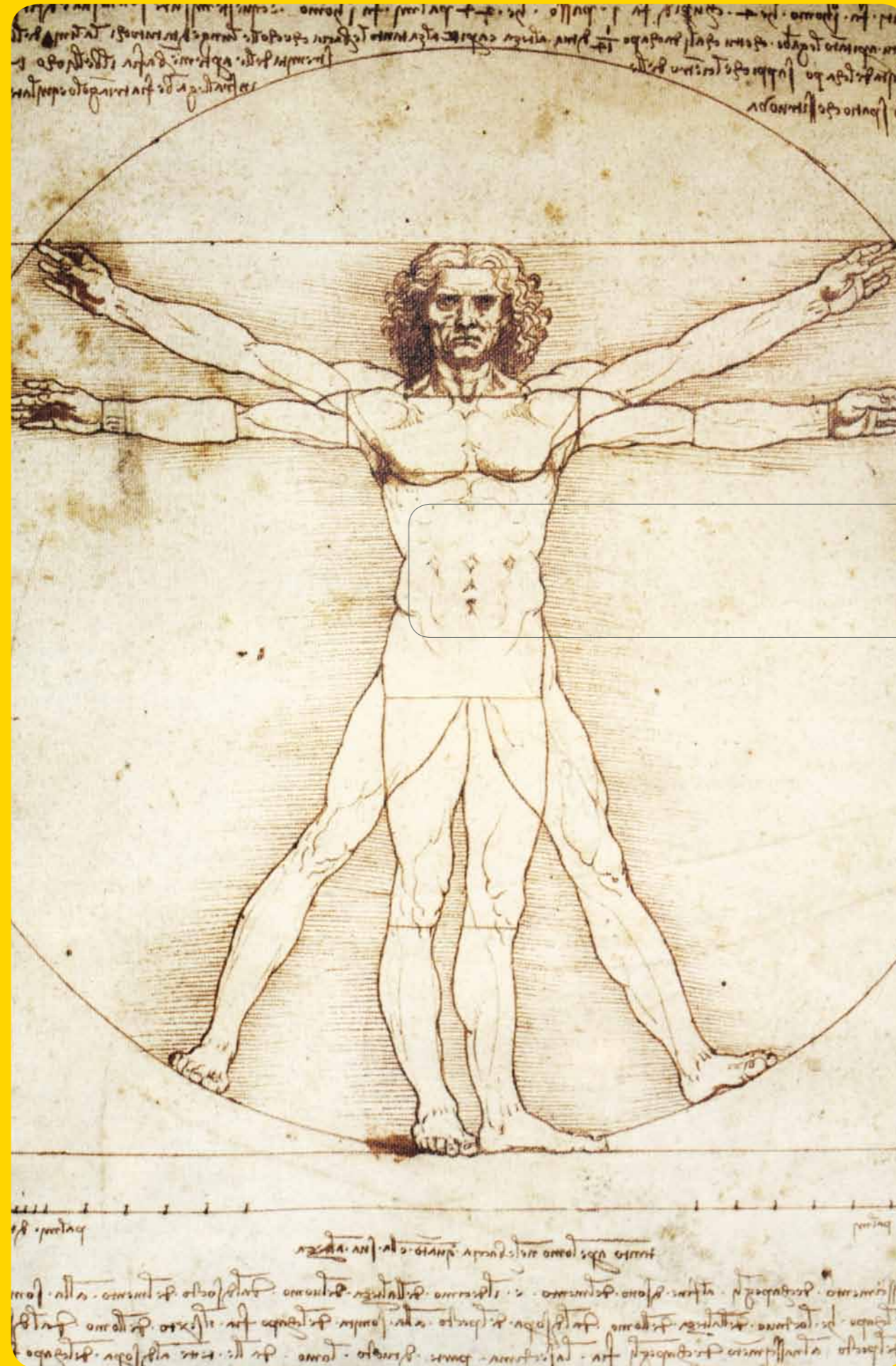
Success is the result of the right decisions.

With the 1404, everything measures up.

COMPACT IS THE FORMAT OF THE FUTURE: THE RIGHT DIMENSIONS FOR GREATER FLEXIBILITY, PERFORMANCE AND FUNCTIONALITY, DOWN TO THE SMALLEST DETAIL. A YARDSTICK TO BE MEASURED BY.

All these factors together generate the long-term cost-effectiveness that has underpinned the success of Wacker Neuson Compact Equipment the world over. And this too is what makes the 1404 so unique and superior in the 1.5-ton category.

**Compact is in demand.**



Equilibrium par excellence.



# Compact, not cramped. Freedom of movement increases productivity.

## 1 The largest cab in the 1.5-ton class.

The generous foot room and the ergonomic layout of the driver's cab offer the ideal conditions for working productively.

## 2 The floor plate in the cab along with the side panels are designed for easy and time-saving maintenance and are easy to remove.

## 3 Direct access to the engine compartment.

All service-relevant components can be reached directly via the large engine hood. Daily checks are reduced to a few small gestures. The water-cooled, energy-efficient and quiet 3-cylinder Yanmar engine already complies with the future exhaust gas standards (EPA TIER IV).



## 4 The cab is easy to remove.

A few gestures is all it takes to dismantle the cab. Even without the cab the 1404 is fully functional, meaning that passages with low headroom are no longer an obstacle.

## 5 Easy displacement or loading of the machine.

The stable hoisting eyelets make it possible to shift the 1404 easily and quickly.



## Productivity needs the chance to flourish. Flexibility offers this chance.

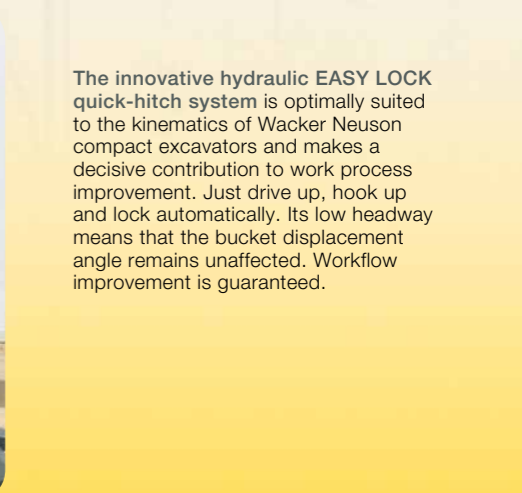
The 1404 is ever ready to take on new challenges. It is easy to transport, simple to relocate and ready for action, even without the cab.

Shipping-weight  
under 1,5 t.



# Compact, not small. True greatness is a sum of small details.

- Telescopic undercarriage (990 - 1300 mm)
- Fold-away dozer blade
- Auxiliary hydraulics as standard
- Protected and secure hose guide



## 1 Telescopic undercarriage.

With the extremely stable, hydraulically-operated telescopic undercarriage (optional), narrow passages can be negotiated with ease. Structural integrity is never compromised.

## 2 Fold-away dozer blade that always remains attached to the machine and so never risks going astray.

Neck cylinder as standard for all-round safety. The boom cylinder at the top of the boom arm is secure in the event of any collisions and safely protected. Even material dragged over the dozer blade cannot touch it.

## 3 Protected and secure hose guide through slewing console and boom.

The auxiliary hydraulics for two directions of rotation run right through to the bucket arm. For hammer action, an unpressurized return line of large cross-section is already fitted in the basic version.

## 4 When excavating up to the dozer blade, even the smallest quantities can be scooped up with ease.



## Great things come in small packages: meticulous design down to the tiniest detail.

The 1404 demonstrates clearly why Wacker Neuson has become such a leading player as a compact equipment specialist. The technology is uncompromisingly orientated towards practical and time-saving usage. Discover it. See the pluses it has to offer. Reap the rewards.

The innovative hydraulic EASY LOCK quick-hitch system is optimally suited to the kinematics of Wacker Neuson compact excavators and makes a decisive contribution to work process improvement. Just drive up, hook up and lock automatically. Its low headway means that the bucket displacement angle remains unaffected. Workflow improvement is guaranteed.

easylock

# Compact, not sedate. Versatility creates demand.



**1 Ready to tackle the toughest jobs too.**  
When working with the hydraulic hammer, particular power reserves are called upon. The 1404 has these in spades, and so even in its basic version it is equipped with its own unpressurized return line.

**2 Sensitive and consistent work thanks to the Load-Sensing-System.**

**3 Manoeuvrability counts: working well in the tightest spots, whenever the need arises.**  
The compact dimensions and particular manoeuvrability of the slewing console guarantee sound results no matter how testing the working conditions. Adaptability is its trump card.

**4 Universal and rapid: even doing standard tasks it's well out in front.**  
Whether digging trenches, laying pipes or landscaping, the 1404 always acquits itself well.

**5 Quality work can be seen in the details: scooping up material using the dozer blade.**  
The 1404 demonstrates its strengths particularly in situations where the interplay of engine power, hydraulics and operability combine to best effect.

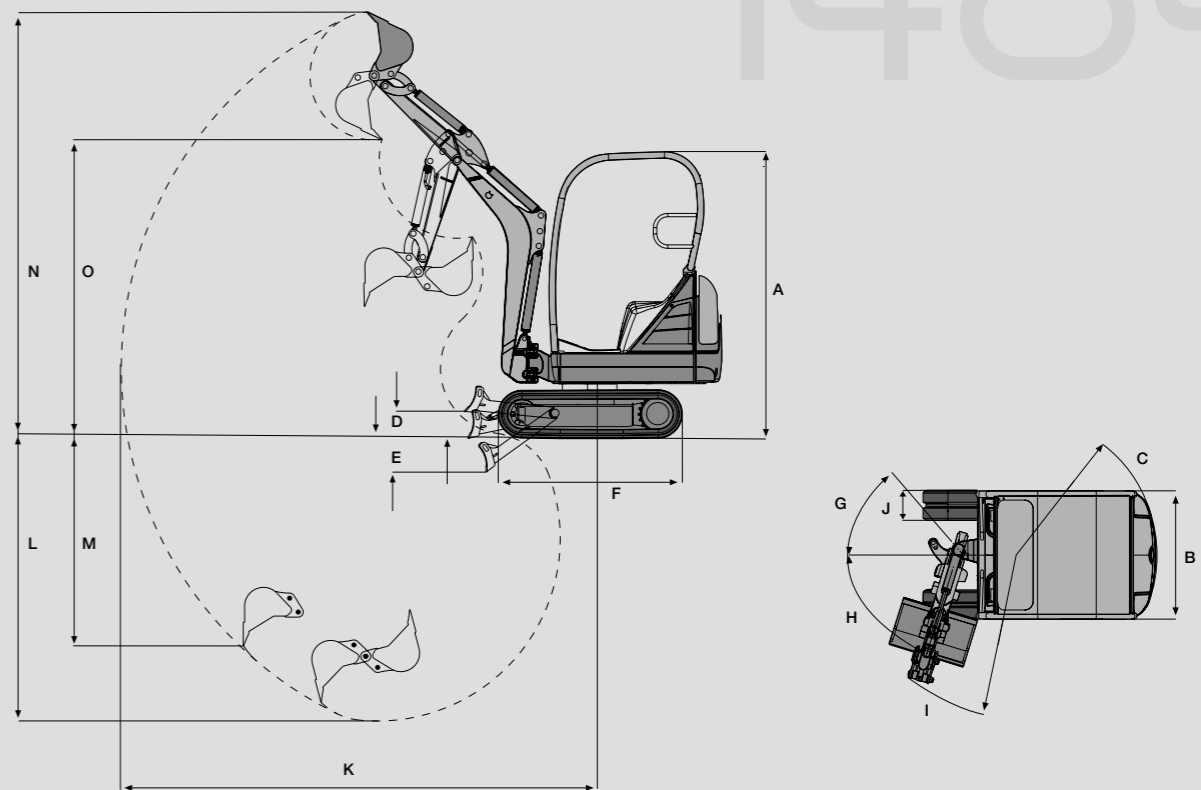
Even difficult jobs can be addressed with a new light touch. Having strength on call, whatever the situation.

Thanks to the Load-Sensing-System, maximum power is always available for every work manoeuvre, when carrying out precise and delicate tasks. This makes it not only a favourite for hire firm customers, but also means that it enjoys an excellent reputation among civil engineering professionals.

At Wacker Neuson, striking a balance for its compact equipment is far from a compromise: it is a particular source of strength.



# 1404



### DIMENSIONS

	1404
A Height	2276 mm
B Width	990 mm
Transport length (boom down)	3645 mm
C Tail slewing radius	1075 mm
Max. boom offset to centre of bucket right side	432 mm
Max. boom offset to centre of bucket left side	287 mm
D Max. lift of dozer blade above ground	211 mm
E Max. digging depth of dozer blade below ground	264 mm
F Track length	1460 mm
G Max. swing angle of boom system to the right	49 °
H Max. swing angle of boom system to the left	73 °
I Min. boom slewing radius	1195 mm
J Crawler width	230 mm
Max. tear-out force (short and long dipperstick)	7,1/6,1 kN
Max. bucket digging force on bucket teeth	14.2 kN
DIGGER DATA (BUCKET ARM - SHORT / LONG)	
Bucket arm length	940 / 1100 mm
K Max. digging radius	3700 / 3860 mm
L Max. digging depth	2240 / 2415 mm
M Max. vertical digging depth	1640 / 1800 mm
N Max. digging height	3390 / 3510 mm
O Max. dumping height	2370 / 2495 mm

OPERATIONAL DATA		1404
Transport weight with cab		1380 kg
Transport weight with cab		1510 kg
Additional weight for telescopic undercarriage / cabin / long dipperstick		90 kg • 110 kg • 10 kg
ENGINE		
Make/Type		Yanmar 3TNV76
Model		water-cooled 3-cylinder diesel engine
Max. engine output		17.9 kW (24.3 PS)
Performance to ISO		13.2 kW (17.9 PS)
Engine displacement		1116 cm <sup>3</sup>
Engine speed		2200 min <sup>-1</sup>
Battery		12 V, 45 Ah
Fuel tank capacity		24 l
HYDRAULIC SYSTEM		
Pump		gear pump
Flow rate		35 l/min
Operating pressure for working and driving hydraulics		200 bar
Operating pressure for slewing gear		150 bar
Hydraulic tank capacity		20 l
UNDERCARRIAGE AND SLEWING SYSTEM		
Travel speed		2.5 km/h
Gradeability		30° / 58 %
Crawler width		230 mm
No. of track rollers per side		3
Ground clearance		180 mm
Ground pressure		0.26 km/cm <sup>2</sup>
Superstructure slewing speed		9.8 min <sup>-1</sup>
DOZER BLADE		
Width/Height		980/232 mm
Max. lift above ground/Max. lift below ground		211/264 mm
NOISE EMISSIONS		
Noise level (L <sub>a</sub> ) as per 2000/14/EC		93 dB(A)

LIFTING POWER TABLE 1404 short dipperstick						
B	A max		3,0 m		2,0 m	
	0°	90°	0°	90°	0°	90°
1,5 m	395*	170	400*	175	430*	315
1,0 m	380*	155	405*	170	615*	300
0,5 m	365*	155	410*	165	725*	280
0,0 m	350*	155	385*	165	715*	270

LIFTING POWER TABLE 1404 long dipperstick						
B	A max		3,0 m		2,0 m	
	0°	90°	0°	90°	0°	90°
1,5 m	390*	160	415*	175	375*	335
1,0 m	375*	150	425*	170	575*	305
0,5 m	360*	145	410*	165	695*	275
0,0 m	345*	145	400*	180	695*	255

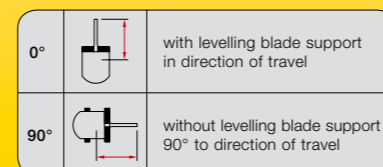
LIFTING POWER TABLE 1404 short dipperstick, telescopic undercarriage						
B	A max		3,0 m		2,0 m	
	0°	90° **	0°	90° **	0°	90° **
1,5 m	395*	205/295	400*	210/300**	430*	375/545
1,0 m	380*	195/275	405*	210/295**	615*	360/525
0,5 m	365*	190/270	410*	205/290**	725*	345/505
0,0 m	350*	190/275	385*	200/300**	715*	335/495

LIFTING POWER TABLE 1404 long dipperstick, telescopic undercarriage						
B	A max		3,0 m		2,0 m	
	0°	90° **	0°	90° **	0°	90° **
1,5 m	390*	200/280	415*	215/305	375*	375/375
1,0 m	375*	185/285	425*	210/300	575*	370/540
0,5 m	360*	180/255	410*	200/290	695*	335/495
0,0 m	345*	180/260	400*	220/315	695*	315/470

- A Projection from the middle of the turntable  
B Load sling height above ground level

\* Lifting force is restricted hydraulically. All values in the table are given in kg, at horizontal standing on hard ground and without bucket. If a bucket or other work tool is attached, the lifting power or tipping load is reduced by their weight. Basis of calculations: as ISO 10567. The lifting power of the compact excavator is limited by the adjustment of the pressure control valve and by the tipping security. Neither 75% of the static tipping load nor 87% of the hydraulic lifting power is exceeded.

\*\* undercarriage 990 mm / 1300 mm



STANDARD EQUIPMENT	1404	OPTIONS	1404
GENERAL			
Rubber track 230 mm		CAB	
Dozer blade		Standard cab	
Working light mounted to the boom		Cabin heating,	
Tool kit		Split front window,	
incl. grease gun and operator manual		Top swings back,	
ENGINE			
Water-cooled Yanmar diesel engine		Bottom lifts out,	
CAB			
Canopy: Adjustable driver seat with imitation leather cover and safety belt; canopy complies with FOPS-, TOPS- and ROPS-regulations		Windscreen wiper and washing system,	
HYDRAULICS			
Load-Sensing-System		1 cabin door, covered cab interior.	
Hydraulic pilot control via joystick		The cabin is removable and complies with FOPS, TOPS and ROPS regulations	
Valve control according to ISO, DIN, SAE, PCSA and EURO		Radio	
Auxiliary hydraulic connections for two directions of motion, mounted on dipperstick		HYDRAULICS	
Hydraulic oil cooler		Biological oil Panolin	
PAINT			
		BP-Biohyd SE46	
		Flat faced couplers	
		Prepar. hydraulic QH-system (EASY LOCK)	
		Special paint 1 RAL for parts in yellow only	
		Special paint 1 no RAL for parts in yellow only	
		Special paint cabin/canopy RAL RAL colours only	
		MISCELLANEOUS	
		Cab lighting front	
		Cab lighting front + back	
		Flashing beacon	
		Driving signal	
		Long dipperstick (+160 mm)	
		Telescopic undercarriage	
		Hydraulic telescopic undercarriage from 990 mm to 1300 mm, with dozer blade extensions	
		Security 24 (2000 h)	
		Warranty extension to 24 months or 2000 operation hours	
		Security 36 (3000 h)	
		Warranty extension to 6 months or 3000 operation hours	
		Drive interlock KAT	
		PACKAGES	
		Mirror package	
		Exterior mirror right and left	

Wacker Neuson compact  
equipment offers power  
and manoeuvrability on the spot.  
**Any time, any place.**

We consider it a constant duty to ensure that our promise regarding our products and services is fulfilled:

**Reliability, Trust, Quality, Reactivity, Flexibility and Innovation.**

Compact construction equipment of the Wacker Neuson brand also does the business where others can only stand and watch. Our products prove their worth through quality, power, intelligent hydraulics, compact dimensions, innovative technology, high productivity and reliability. This gives a form of set-up that only Wacker Neuson – the specialist in compact equipment – is capable of.

You too can take advantage of this bespoke capability. The Wacker Neuson compact class is in a class of its own. With success stamped right through it.



**WACKER  
NEUSON**