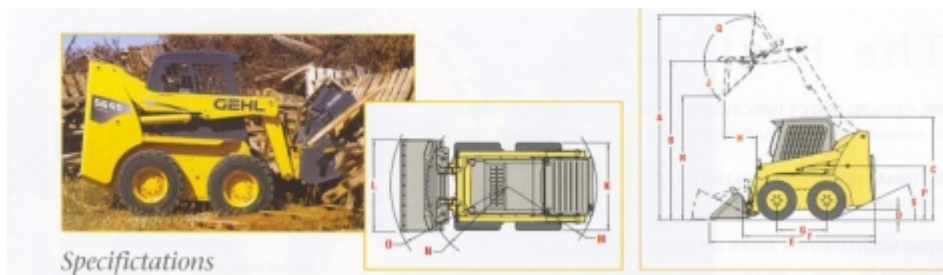


SL 3840



Dimensions		SL 3840
A	Overall operation height-fully raised	3.546 mm
B	Height of hinge pin-fully raised	2.746 mm
C	Overall height	1.786 mm
D	Ground Clearance	152 mm
E	Overall length (with bucket)	2.896 mm
F	Overall length (less bucket)	2.258 mm
G	Wheel base	876 mm
H	Dump reach	579 mm
I	Rollback at ground	29°
J	Dump angle	42°
K	Overall width	27x8.5x15=1.229 mm
L	Bucket width	1.380 mm
M	Clearance circle-rear	1.374 mm
N	Clearance circle-front (less bucket)	1.120 mm
O	Clearance circle-front (with bucket)	1.763 mm
P	Seat to ground height	828 mm
Q	Rollback at full height	99°
R	Dump height	2.146 mm
S	Departure angle	

Gehlmax Nederland b.v.
 Bruningsstraat 1-3
 4251 LA WERKENDAM
 Tel. 0183 -502311



Machine	SL 3840
Operating weight	1.814 kg
Tip capacity	952 kg / 1.066 kg
Operating capacity	476 kg / 533 kg
Breakout force	1.270 kg
Hydraulic	SL 3840
Loader circuit pump	52 l/min
Loader circuit pressure	190 bar
Hydraulic reservoir	38 litre
Max. travel speed	0 – 10,3 km/h
2-Speed-optional-	
Standard buckets- width/volume	SL 3840
Standard bucket	1.380 mm / 0,28 m ³
Utility bucket	1.380 mm / 0,35 m ³
Lightmaterial bucket	1.380 mm / 0,43 m ³
Engine	SL 3840
Manufacturer	Yanmar
Diesel	3TNV88
Power output max.	35 HP / 26,1 KW
At rpm	2.500 rpm
Cylinder / displacement	3/1.640 cm ³
Fuel capacity	38,9 litre