

VOLVO ARTICULATED HAULERS - INTRODUCING THE

# E-SERIES



**MORE CARE. BUILT IN.**





# TRUST

**TRUST** noun:  
– complete confidence in a person,  
organization, plan, etc.  
– to rely on.

## Relax it's a Volvo

Each and every articulated hauler in the Volvo E-Series is a brand new or updated machine that's a genuine Volvo. They're all advanced solutions that function – even under the roughest conditions. And like all Volvos, they have more uptime, more value, more safety and, of course, more care built in.

The E-Series is a complete range of 7 haulers. They're full of innovative technology designed to do what we believe we do best: Safeguard your operators, the environment and your investment, while advancing the health and the prosperity of your business.

### Some things we're particularly proud of

For example, the A35E FS and A40E FS feature new self-compensating hydraulic full suspension systems. For the first time ever, you'll experience a truly smooth ride combined with the agility and speed you need to ensure top yield and unparalleled safety from even the roughest terrain.

Then there's the latest generation V-ACT (Volvo Advanced Combustion Technology) engines. They're relentlessly powerful, even at really low engine speed. And our renowned Care Cab protects your operators and your productivity better than any other cab.

These are just a few of the many reasons you can count on the Volvo E-Series for top performance and top value – for a more profitable business and greater peace of mind.

The features described in this brochure are not necessarily available on all models in all market. See the product brochures for the respective models for detailed specifications and information about standard equipment and optional equipment.





# Why you should rely on us

Back when building and production booms were fuelling demand for an all-terrain hauler to operate under the toughest conditions, our forerunners responded fast. Not just with a more robust vehicle, but with an entirely new machine concept: The articulated hauler.

### The birth of a great idea

In its first incarnation, the new machine really wasn't much more than a tractor, minus the front axle and coupled to a trailer through a hitch with an articulated joint.

But the ingenious idea soon revolutionized earth moving and other demanding operations in the construction sector. Today's E-Series is the latest expression of more than 40 years spent perfecting the art and design of articulated haulers. And it's backed by the full strength of Volvo Construction Equipment, an industry force for close to a century.

### The secret of success

The secret of our success – and yours – is and always has been our commitment to our customers' results. We create value through

focused development, uncompromising trustworthiness and constant attention to your return on investment.

We have years of experience partnering with customers to provide flexible full-service maintenance and repairs. Our extensive stocks of replacement parts and kits at sites around the world let us promise the shortest possible lead-times. And our global dealer and service network means we can offer up-to-the minute training as well as speedy response whenever needed.

### What the Volvo E-Series can do for your business

So sit back. Rely on a company with more experience, more skill and more dedication to your results than anyone else in the industry. And see what the new Volvo E-Series can do for your business.



**TRUST** noun:  
– complete confidence in a person, organization, plan, etc.  
– to rely on.





# STRENGTH

**STRENGTH** noun:  
- the quality or state of being strong.  
- ability to do or to bear.  
- capacity for exertion or endurance.  
- power to resist force.

## Finally, a hauler that really cares for your operators

Nowadays, you don't have to be a tough guy to run a Volvo hauler. Because we've finally cracked the secret of suspension that can take every jolt, bump and thud of even the worst terrain. And put that knowledge to work to give you your first full suspension articulated hauler.

### How does it work?

It's Self-Compensating Hydraulic Full Suspension, and it's the accumulation of years of research, development and testing. Instead of traditional suspension, it has hydraulic cylinders with automatic level and stability control on every wheel. It senses every change and instantly adjusts to keep thumps and vibration from reaching the hauler. So it effectively absorbs all the rough stuff to give you full maneuverability, maximum speed and incomparable comfort.

### No pain, more gain

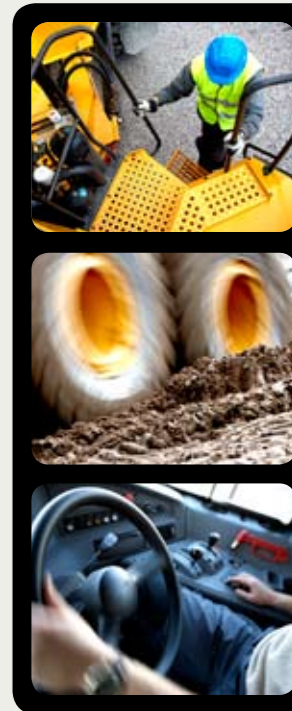
Watch a full-suspension articulated hauler, and you'll hardly believe your eyes. It runs, loaded and unloaded, at top speed. It seems to float over the rough areas where other haulers bounce and roll. Operators have never been so comfortable. So they're sharper,

more effective and happier on the job. You'll see an immediate increase in production, operators will drive and maneuver faster and more safely.

### Built to handle the WBV directive

The EU directive on whole body vibration (WBV) establishes limits for body vibrations. When fully in place in 2010, it will mean that in some cases operators won't be allowed to operate for a full shift. After six hours, for example a new operator may have to take over – or work will grind to a halt.

But tests have shown that in our full suspension haulers operators can work much longer before limits are reached. So short shifts and delays need never be part of your plans.





**STRENGTH**

**STRENGTH** noun:  
- the quality or state of being strong.  
- ability to do or to bear.  
- capacity for exertion or endurance.  
- power to resist force.

## Haul more, do more, earn more

The combined resources of Volvo Construction Equipment and the Volvo Group let us equip you to live up to the demands of an increasingly competitive market. At some of the most sophisticated research centers in the business, we've concentrated our efforts on innovations that provide tangible value for our customers. Like high productivity and the lowest cost-per-ton possible.

### High power. Low revs. Top yield.

The E-Series features new-generation V-ACT engines. These Volvo engines generate more power and torque at the lowest possible engine speeds for impressive productivity that's extremely cost-efficient. And they meet all emission requirements – while putting every last drop of fuel to good use.

### Maximum effect

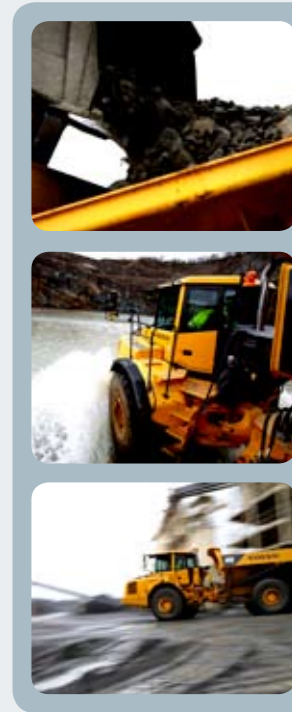
For the fastest, most efficient work cycles around, the A35E/FS and A40E/FS offer enhanced Powertronic transmissions. With 9 forward and 3 reverse gears and smoother-than-ever shifting, the new transmissions provide precise automatic gearshift, automatically finding the right gear. So the perfect amount of power is always applied. Operation is comfortable, traction is optimal, wear-and-tear is lower, and you save on fuel.

### A mode made for any job

Steering on ice. Scrambling up a grade. Muscling out of a rut. Volvo haulers do it all. But with a full five operating modes and 100% lockable differential locks on axles, the E-Series is ready. You can pick the perfect drive combination for the job – and adjust it fast, even on the run, when conditions change. Plus, the E-Series offers the market's only 6x4 drive option, saving fuel and wear-and-tear on tires. Our Automatic Traction Control (ATC) system is yet another way Volvo keeps you on the move. It automatically selects the right drive combination to provide easy operation and reduced fuel consumption and tire wear.

### Measured muscle

Thanks to an intelligent load-sensing hydraulic system, our haulers use muscle to maximum effect. You use power precisely where and when you need it, with lower fuel consumption, lower emissions, less wear and tear – and stronger business results – to follow.







**STRENGTH** noun:  
- the quality or state of being strong.  
- ability to do or to bear.  
- capacity for exertion or endurance.  
- power to resist force.

# No time? No roads? No sweat.

When your profits depend on doing a job fast, while doing it well and doing it safe. And your workplace looks like the surface of the moon, you need an articulated hauler from Volvo. Why? Because the Volvo E-Series is the culmination of more than 40 years of development aimed at delivering the fastest, safest, most profitable work cycles around.

**Get a move on**

If you can't get to it, you can't move it. So we built the E-series to go through just about anything. Revolutionary self-compensating hydraulic suspension and one-of-a-kind self-compensating steering provide unmatched comfort, agility and driving quality. And thanks to the rotating hitch, and purpose-built off-road rear bogie design, our machines maintain excellent ground contact and maneuver better than any other hauler.

There's also a new in-line dropbox that provides higher ground clearance and superior stability. And the improved retarder function activates instantly for easier, safer downhill operation.

**Fill it up**

On the A40E and A40E FS, we've upped load capacity to a full 43 tons and the A35E and A35EFS have been increased to 37 tons. The entire series offers adaptable body solutions, so you

can haul different types of material without spilling. New body solutions on the A25E and A30E include heavy-duty wear plates, a bolt-on light material kit and over and underhung tailgates that protect against spill in steep, sloping and uneven terrain.

**Put the brakes on and dump it right here**

The unique Load & Dump brake on the E-Series haulers automatically applies the rear brakes and selects neutral at the push of a button. After dumping, the brakes release automatically. So dumping is more effective and safer, operators tire less quickly, and wear and tear is substantially reduced. Plus, intelligent load-sensing hydraulics allow for precise control for both steering and load body and reduce fuel consumption. So you can dump and lower the body in as little as 12 and 9 seconds respectively. And you'll be able to put that load exactly where you want it.



## Excellence for the long haul

Total quality – made possible by clear objectives, clear responsibility and involvement throughout the company – will see you through the worst of storms. That's why these concepts drive Volvo's approach to building stronger, more durable products. It's also why we use ISO 9001 certified systems for quality management. And it's how we ensure that the products we deliver are safe and durable solutions that run better and last longer.

### They keep on keeping on

Components that are safeguarded against abuse and misuse not only save you money and downtime, they also give you machines with unprecedented long service lives and lower maintenance. For example, firmly attached sealed conduits with rubber-encapsulated connectors and terminal caps keep dirt and water well away from electrical components. Frames and chassis are well proven and extra strong. And for harsh, abrasive loads there are heavy-duty wear plates available.

### Daily service? Just forget about it.

With the E-Series, high uptime is the name of the game. In fact, you can forget all about daily service. Electronic monitoring of oil and fluid levels does the job instead.

### Genuine Volvo Parts

Anytime you talk about endurance, Genuine Volvo Parts are part of the story. Like Volvo machines, they have more quality built right in. You always get the latest, most up-to-date parts, which are engineered to be perfectly compatible with your haulers.

### Let us support you

The E-Series is backed by a wide range of flexible Volvo Customer Support Agreements. They cover the entire spectrum of essential skills and services. From advanced monitoring and diagnostics, supporting precisely timed scheduled maintenance to skilled inspection, service, maintenance and repairs and even full responsibility for the complete care of your haulers for a fixed cost. Volvo Customer Support Agreements keep your costs transparent while you reap the full benefit of the know-how Volvo has gathered over close to a century as a complete service partner.



**ENDURANCE** noun:  
– to continue in the same state over time.  
– the power to withstand hardship or stress.  
– state or quality of lasting or duration.





# PROTECTION

**PROTECTION** noun:  
- the activity of protecting someone or something.  
- to cover or shield from danger or injury.  
- to preserve in safety.

## Safety is first priority

Over the years, a long list of innovative features has made Volvo an acknowledged leader in vehicle and equipment safety. Today, our concept of safety has evolved to encompass a broader context. So when we speak of safety, we're also talking about safe interactions with others on the roads and in work situations and improved comfort and working conditions for operators.

### Your success is in their hands

At the end of the day, if the cab isn't well designed, your operators won't be able to do their jobs well. That's why the entire E-Series comes equipped with genuine Volvo Care Cabs – a working environment that's as safe as it is comfortable. Because people need a safe, comfortable environment to enjoy their work – and people who like what they do, do it better.

### In the middle of it all sits the operator

The Care Cab was designed around the operator's needs: The steps he climbs are anti-slip and equipped with hand rails. He steps into an ample cabin that lives up to the ROPS and FOPS ISO requirements. He sits down in an ergonomic, adjustable, seat that's centered precisely over the axle. Tall wrap-around windows

provide a panorama view of the worksite. And the cab is well lit, air-conditioned and has the lowest sound level in the industry.

### In full command

Operating a vehicle in the safest manner possible is the best way to avoid work-related accidents. That's the reason the E-Series' active safety features are specifically designed to support operators and keep them in control. There's simplified brake control, for example and improved retardation. And full suspension means better ground contact, which makes for a more stable machine. In fact, from steering to suspension, to brakes to hydraulics, we always emphasize stability and safe handling. So your operators can trust us to keep them safe. And you can trust them do a great job.







**INTELLIGENCE** noun:  
 - the ability to comprehend.  
 - to understand and profit from experience.  
 - having the power to bring into being.

## Technology that adds tangible value

At Volvo, we pay sharp attention to customer needs, to changes in society and to breakthrough technology. We concentrate our R&D efforts on innovations and systems that provide concrete value for our customers – such as higher availability and lower operating costs. This has led to a long list of groundbreaking improvements, including advanced digital technology.

### Sustained performance and maximum uptime

Volvo Contronic is a comprehensive computerized monitoring solution on three levels that monitors functions in real-time and alerts the operator if a problem occurs. MATRIS tracks, analyzes and displays data on machine handling and operation, helping operators to objectively evaluate and improve their own handling habits and thus improving the performance, lifetime and productivity of their machines.

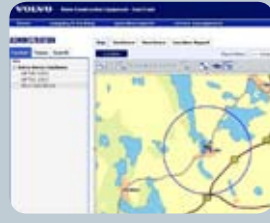
### Suited to the job at hand

VCADS Pro monitors up-to-the-minute work conditions, analyzes status and traces errors. One aim is to be able to adapt the machine to the job at hand – once again, helping to improve perfor-

mance, prolong maintenance intervals and cut time spent on service and repairs.

### Remote diagnostics and monitoring

Then there's CareTrack Advanced, our sophisticated remote monitoring and diagnostics system. CareTrack Advanced collects information over a wireless network in order to monitor and control work in the field. It provides split-second access to all the information you need – even from miles away from the work site. So it helps you make informed and timely decisions about maintenance and repairs.



# Good day and good night

A successful construction business starts with the right equipment. Nevertheless, you need more than the best machines to grow your business to its full potential. That's why Volvo's offer is based on a holistic approach to supply and maintenance that turns top-tuned construction equipment into complete value-added solutions. We partner with you for the long haul.

## Growth from the ground up

We help you get off to a good start – and finish ahead – with comprehensive, flexible financing, leasing, loan or rental agreements. First we work with you to assess your situation. Then we look at your options. Because we know every business is different, we offer a full range of standard solutions as well as customized solutions to suit your needs.

## Years of worry-free service

Once you have the fleet you need, we offer Volvo Service Agreements. We know your machines intimately, so we're equipped to care for them well. You can choose the agreement that suits you best. We provide genuine Volvo Parts and value-added kits. And with inventory and service sites around the world, we're always right there when you need us.

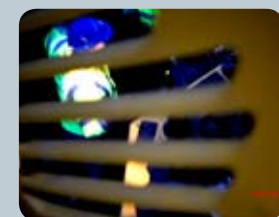
## Help with remarketing

Then when trade-in time rolls around, Volvo haulers are known for consistently high resale value – plus we offer a comprehensive certification program for used equipment and support for remarketing.

## The best way to grow your business

Take good care of your operators and they'll take good care of your equipment, your operations, and your ownership. It's that simple and that crucial. That's why the E-Series haulers are all equipped with our exclusive Care Cab. Why they're designed for easy, enjoyable handling. And why detailed technical documentation and instructional material is supplied for every machine.

All in all, we take special care to make every day on the job a good day for your operators. So they can make every day a productive day on your site – and a good day for your business.



**GROWTH** noun:  
– a process of becoming larger or longer or more numerous or more important.  
– economic expansion.  
– the growth of power.





# HARMONY

**HARMONY** noun:  
- a harmonious state of things in general and of their properties.  
- a design or composition as to produce unity of effect, as the harmony of the universe.

## Growth that's sustainable

Volvo has been included in the Dow Jones Sustainability World Index for five years running, which places us among the top 10% of the world's best companies in terms of combining financial strength with concern for environmental and social issues. So while we clearly prioritize growth and financial health for our customers, we place equal weight on environmental protection and the effective use of our natural resources.

### Breathe easy ...

V-ACT engines, for example, not only contribute to making the E-Series extremely cost efficient, they also keep fuel consumption low. They feature Internal Exhaust Gas Recirculation, a simple and efficient solution for reducing emissions. Full Automatic Power Shift Transmission and load-sensing hydraulics – with biodegradable oil available – also lower fuel consumption and emissions, save wear and tear and extend the life of your machines.

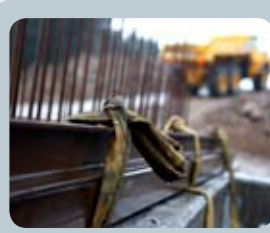
your purchase. You'll find that the E-Series haulers will help you play your own active role in protecting the environment. Because they're more than 95% recyclable.

Simply put, we've taken environmental impact into consideration at every stage of our products' lifecycles – from the drawing board to recycling.

Because in the long run, growth is important, but sustainable growth is vital.

### One last thing about the E-Series

There's something else that's worth noting about the Volvo E-Series. Something that only becomes apparent years after



# EXPERIENCE A25E, A30E

## Volvo diesel engine – more power, low fuel consumption and low emissions

- Volvo's Tier 3/Stage IIIA approved D9 engine features Volvo Advanced Combustion Technology (V-ACT).
- High power and torque.  
A25E – 224 kW, 1700 Nm  
A30E – 252 kW, 1700 Nm

## In-line drop box – excellent ground clearance

- High ground clearance and machine stability.
- Low internal power losses.
- Low fuel consumption.

## Volvo transmission – smooth shifting, low fuel consumption and high endurance

- Fast and accurate gear selection.
- Delivers optimized rimpull at every speed.

## Rotating Hitch – excellent off-road mobility and long service life

- Rotating hitch and articulated steering – good traction, off-road mobility and less stress on the frames.
- High positioned hitch – superior ground clearance and stability.

## Exhaust brake and retarder – easy to use, high performance and long service life

- Hydraulic retarder integrated in transmission.
- Exhaust brake used in combination with retarder.

## Adaptable body solutions\* – optimizes operation

- New bolt-on light material kit – easy mounting and dismantling.
- New linkage operated overhung and under hung tailgate.
- Wire operated overhung tailgate.
- New heavy-duty wear plates.
- Front spill guard.
- Body heating.



## Unique steering – supporting high performance and safe operation

- Self-compensating hydro-mechanical Steering.
- Easy high-speed driving and steering accuracy.
- Powerful even in rough conditions.

## 6x4 or 6x6 drive – best performance in all operating conditions

- Five easy to use drive combinations – fits all operating conditions.
- Reduces fuel consumption and tire wear.
- 100% dog clutch type diff-lock – increases off-road mobility.
- Automatic Traction Control (ATC)\* – simplifies operation, reduces tire wear and fuel consumption.

## High strength steel body – long service life

- Steel body 400 HB hardness.
- High chute and tipping joint with 70° or greater dump angle.

## Maintenance and uptime – more hours on the job

- No daily or weekly greasing.
- Contronic monitors fluid levels and system functions.
- Easy access to service points.
- Grouped engine filters and remote mounted drains.
- Swing down front service platform – ease of service.

## Unique Load & Dump brake – fast and safe operation

- Used when positioning the machine for loading or dumping.
- Single button to activate trailer brakes and shift to neutral – maximizes ergonomics and enhances productivity.

## Volvo Care Cab – comfortable and safe

- Spacious interior and optimized visibility.
- Operator positioned above the front axle and in the center of the machine.
- Fully adjustable, suspended operator seat with seat belt.
- Telescopic steering wheel.
- Air conditioning and effectively filtered fresh air.
- Cab structure tested and approved according to legal requirements (ISO/SAE).
- Contronic (electronic control system) protects the machine function and informs the operator of machine status.
- Anti-slip footsteps, wide and angled cab ladders and conveniently located handrails.

### Specifications:

	A25E 4x4	A25E	A30E
Engine, Volvo	D9 BAAE3*/BABE3**	D9 BAAE3*/BABE3**	D9 BADE3*/BACE3**
Max power at	35 r/s (2 100 rpm)	35 r/s (2 100 rpm)	31,7 r/s (1 900 rpm)
SAE J1995 Gross	224 kW (305 hp)	224 kW (305 hp)	252 kW (343 hp)
SAE J1349 Net	223 kW (303 hp)	223 kW (303 hp)	251 kW (341 hp)
Max torque at	20 r/s (1 200 r/min)	20 r/s (1 200 r/min)	20 r/s (1 200 r/min)
SAE J1995 Gross	1 700 Nm (1 254 lb ft)	1 700 Nm (1 254 lb ft)	1 700 Nm (1 254 lb ft)
SAE J1349 Net	1 689 Nm (1 246 lb ft)	1 689 Nm (1 246 lb ft)	1 689 Nm (1 246 lb ft)
Max. Speed	53 km/h (32,9 mph)	53 km/h (32,9 mph)	53 km/h (32,9 mph)
Load Capacity	24 000 kg (26,5 sh tn)	24 000 kg (26,5 sh tn)	28 000 kg (31 sh tn)
SAE 2:1 heap	13 m <sup>3</sup> (17 yd <sup>3</sup> )	15 m <sup>3</sup> (19,6 yd <sup>3</sup> )	17,5 m <sup>3</sup> (22,9 yd <sup>3</sup> )
Net weight	19 470 kg (42 924 lb)	21 560 kg (47 531 lb)	23 060 kg (50 838 lb)
Gross weight	43 470 kg (95 835 lb)	45 560 kg (100 442 lb)	51 060 kg (112 568 lb)

\*) Meets Europe (EU) Stage IIIA.

\*\*\*) Meets US (EPA) Tier 3, California (CARB) Tier 3 and Europe (EU) Stage III.

\*Optional equipment



# EXPERIENCE A35E, A40E

## NEW New larger body - increased load capacity

- Increased load capacity and higher payload.

### A35E

Payload - 33,5 tons / 37 tons.

Load capacity - 20,5 m<sup>3</sup> (+0,5m<sup>3</sup>).

### A40E

Payload - 39 tons / 43 tons.

Load capacity - 24 m<sup>3</sup> (+1,5m<sup>3</sup>).

## NEW Volvo diesel engine - more power, low fuel consumption and low emissions

- Volvo's Tier 3/Stage IIIA approved D12 and D16 engines features Volvo Advanced Combustion Technology (V-ACT).

- Higher power and torque.

A40E - New D16 with 350 kW, 2500 Nm

A35E - New higher power D12 with 313 kW, 2100 Nm

## NEW New exhaust brake and retarder - easy to use, high performance and long service life

- Wet disc brakes used as a retarder - instant activation.

- Improved brake cooling.

- Improved retardation.

- Exhaust brake in combination with retarder.

- Exhaust brake activates in five steps - better control.

## NEW New Volvo transmission - smooth shifting and high endurance

- New PT2509 transmission provides constant power transfer to the wheels.

- Enhanced control system with ability to skip gears - fast and accurate gear selection.

- 9 forward, 3 reverse gears delivers optimized rim-pull at every speed.

- Reinforced bearings and shafts to accommodate higher torque.

## NEW New in-line drop box - better ground clearance

- Better ground clearance and machine stability.

- Reduced power losses.

## NEW New axles with wet disc brakes - long service life

- Heavy-duty axle design.

- Wet disc brakes - high braking power and long service life.

## NEW High quality frames - longer service life

- Frame optimized for robot welding.

- Proven box type frame design - strong, weight optimized, high quality frames.

## 6x4 or 6x6 drive - best performance in all operating conditions

- Five easy to use drive combinations - fits all operating conditions.

- Reduces fuel consumption and tire wear.

- 100% dog clutch type diff-lock - increases off-road mobility.

## Rotating Hitch - excellent off-road mobility and long service life

- Rotating hitch and articulated steering - good traction, off-road mobility and less stress on the frames.

- High positioned hitch - superior ground clearance and stability.

## NEW Adaptable body solutions\* - optimizes operation

- Wire operated overhung tailgate.

- Front spill guard.

- Body heating.

## Unique steering - supporting high performance and safe operation

- Self-compensating Hydro-mechanical Steering.

- Easy high-speed driving and steering accuracy.

- Powerful even in rough conditions.

## Maintenance and uptime - more hours on the job

- No daily or weekly service.

- Contronic monitors fluid levels and system functions.

- Easy access to service points.

- Grouped engine filters and remote mounted drains.

- Swing down front service platform for ease of service.

## NEW Software functions - ease of operation and safety

- New generation Contronic software.

- Machine speed/rimpull is controlled by Contronic.

## High strength steel body - long service life

- Steel body 400 HB hardness.

- High chute and tipping joint with 70° or greater dump angle.

## Unique Load & Dump brake - fast and safe operation

- Used when positioning the machine for loading or dumping.

- Single button to activate trailer brakes and shift to neutral - maximizes ergonomics and enhances productivity.

## Volvo Care Cab - comfortable and safe

- Spacious interior and optimized visibility.

- Operator positioned above the front axle and in the center of the machine.

- Fully adjustable, suspended operator seat with seat belt.

- Telescopic steering wheel.

- Air conditioning and effectively filtered fresh air.

- Cab structure tested and approved according to legal requirements (ISO/SAE).

- Contronic (electronic control system) protects the machine function and informs the operator of machine status.

- Anti-slip footsteps, wide and angled cab ladders and conveniently located handrails.



\*Optional equipment

### Specifications:

	A35E	A40E
Engine, Volvo	D12D AFE3*/AEE3**	D16D ABE3*/AAE3**
Max power at SAE J1995 Gross	30 r/s (1 800 rpm) 313 kW (426 hp)	30 r/s (1 800 rpm) 350 kW (476 hp)
SAE J1349 Net	309 kW (420 hp)	346 kW (471 hp)
Max torque at SAE J1995 Gross	20 r/s (1 200 rpm) 2100 Nm (1 549 lb ft)	20 r/s (1 200 rpm) 2 525 Nm (1 862 lb ft)
SAE J1349 Net	2 056 Nm (1 547 lb ft)	2 493 Nm (1 837 lb ft)
Max. Speed	57 km/h (35,4 mph)	57 km/h (35,4 mph)
Load Capacity	33 500kg (37 sh tn)	39 000 kg (43 sh tn)
SAE 2:1 heap	20,5 m <sup>3</sup> (26,8 yd <sup>3</sup> )	24,0 m <sup>3</sup> (31,4 yd <sup>3</sup> )
Net weight	28 100 kg (61 950 lb)	30 200 kg (66 580 lb)
Gross weight	61 600 kg (135 805 lb)	69 200 kg (152 560 lb)

\*) Meets Europe (EU) Stage IIIA.

\*\*) Meets US (EPA) Tier 3, California (CARB) Tier 3 and Europe (EU) Stage III.

# EXPERIENCE A35E FS, A40E FS

## NEW New larger body - increased load capacity

- Increased load capacity and higher payload.

### A35E

Payload - 33,5 tons / 37 tons  
Load capacity - 20,5 m<sup>3</sup> (+0,5m<sup>3</sup>).

### A40E

Payload - 39 tons / 43 tons.  
Load capacity - 24 m<sup>3</sup> (+1,5m<sup>3</sup>).

## NEW Volvo diesel engine - more power, low fuel consumption and low emissions

- Volvo's Tier 3/Stage IIIA approved D12 and D16 engines features Volvo Advanced Combustion Technology (V-ACT).

- Higher power and torque.

A40E - New D16 with 350 kW, 2500 Nm

A35E - New higher power D12 with 313 kW, 2100 Nm

## NEW New exhaust brake and retarder - easy to use, high performance and long service life

- Wet disc brakes used as a retarder - instant activation.

- Improved brake cooling.

- Improved retardation.

- Exhaust brake in combination with retarder.

- Exhaust brake activates in five steps - better control.

## NEW New Volvo transmission - smooth shifting and high endurance

- New PT2509 transmission provides power transfer to the wheels.

- Enhanced control system with ability to skip gears - fast and accurate gear selection.

- 9 forward, 3 reverse gears delivers optimized rim-pull at every speed.

- Reinforced bearings and shafts to accommodate higher torque.

## NEW New in-line drop box - better ground clearance

- Better ground clearance and machine stability.

- Reduced power losses.

## NEW New axles with wet disc brakes - long service life

- Heavy-duty axle design.

- Wet disc brakes - high braking power and long service life.

## NEW High quality frames - longer service life

- Frame optimized for robot welding.

- Proven box type frame design - strong, weight optimized, high quality frames.

## NEW Self-compensating Hydraulic Full Suspension system (FS) - safer, more comfortable and more productive operation

- Full suspension - loaded and unloaded.

- Better operator comfort - supports Whole Body Vibration Legislation.

- Higher average speed on rough haul roads.

- Automatic level control improves stability.

- Provides better ground contact.

- Stabilizer function built in.

## NEW Adaptable body solutions\* - optimizes operation

- Wire operated overhung tailgate.

- Front spill guard.

- Body heating.

## NEW Software functions - ease of operation and safety

- New generation Contronic software.

- Machine speed/rimpull is controlled by Contronic.

## Unique steering - supporting high performance and safe operation

- Self-compensating hydro-mechanical Steering.

- Easy high-speed driving and steering accuracy.

- Powerful even in rough conditions.

## Maintenance and uptime - more hours on the job

- No daily or weekly service.

- Contronic monitors fluid levels and system functions.

- Easy access to service points.

- Grouped engine filters and remote mounted drains.

- Swing down front service platform for ease of service.

## High strength steel body - long service life

- Steel body 400 HB hardness.

- High chute and tipping joint with 70° or greater dump angle.

## Rotating Hitch - excellent off-road mobility and long service life

- Rotating hitch and articulated steering - good traction, off-road mobility and less stress on the frames.

- High positioned hitch - superior ground clearance and stability.

## 6x4 or 6x6 drive - best performance in all operating conditions

- Five easy to use drive combinations - fits all operating conditions.

- Reduces fuel consumption and tire wear.

- 100% dog clutch type diff-lock - increases off-road mobility.

## Unique Load & Dump brake - fast and safe operation

- Used when positioning the machine for loading or dumping.

- Single button to activate trailer brakes and shift to neutral - maximizes ergonomics and enhance productivity.

## Volvo Care Cab - comfortable and safe

- Spacious interior and optimized visibility.

- Operator positioned above the front axle and in the center of the machine.

- Fully adjustable, suspended operator seat with seat belt.

- Telescopic steering wheel.

- Air conditioning and effectively filtered fresh air.

- Cab structure tested and approved according to legal requirements (ISO/SAE).

- Contronic (electronic control system) protects the machine function and informs the operator of machine status.

- Anti-slip footsteps, wide and angled cab ladders and conveniently located handrails.



### Specifications:

	A35E FS	A40E FS
Engine, Volvo	D12D AFE3*/AEE3**	D16D ABE3*/AAE3**
Max power at	30 r/s (1 800 rpm)	30 r/s (1 800 rpm)
SAE J1995 Gross	313 kW (426 hp)	350 kW (476 hp)
SAE J1349 Net	309 kW (420 hp)	346 kW (471 hp)
Max torque at	20 r/s (1 200 rpm)	20 r/s (1 200 rpm)
SAE J1995 Gross	2100 Nm (1 549 lb ft)	2 525 Nm (1 862 lb ft)
SAE J1349 Net	2 056 Nm (1 547 lb ft)	2 493 Nm (1 837 lb ft)
Max. Speed	57 km/h (35,4 mph)	57 km/h (35,4 mph)
Load Capacity	33 500kg (37 sh tn)	39 000 kg (43 sh tn)
SAE 2:1 heap	20,5 m <sup>3</sup> (26,8 yd <sup>3</sup> )	24,0 m <sup>3</sup> (31,4 yd <sup>3</sup> )
Net weight	28 500 kg (62 832 lb)	30 600kg (67 461 lb)
Gross weight	62 000 kg (135 805 lb)	69 600 kg (153 442 lb)

\*) Meets Europe (EU) Stage IIIA.

\*\*\*) Meets US (EPA) Tier 3, California (CARB) Tier 3 and Europe (EU) Stage III.

\*Optional equipment











*All products are not available in all markets. Under our policy of continuous improvement, we reserve the right to change specifications and design without prior notice. The illustrations do not necessarily show the standard version of the machine.*

**VOLVO**

**Construction Equipment**  
**[www.volvo.com](http://www.volvo.com)**

Ref. No. 21 A 100 3151

Printed in Sweden 2007.03-2,0

Volvo, Braås

English

ART