

JOHN DEERE CONSTRUCTION EQUIPMENT

FLEET

2009



JOHN DEERE

2009

ADTs	4
Backhoe Loaders	6
Crawler Dozers	8
Crawler Loaders	16
Compact Excavators	18
Wheeled Excavators	20
Excavators	22
Loaders	26
Landscape Loaders	32
Motor Graders	34
Skid Steers	36
Compact Track Loaders	38
Waste-Handler Loaders	40
Waste-Handler Dozers	42
Scraper Tractors	44
Scrapers	46
JDLINK™	48
John Deere Credit	50
Customer Personal Service ..	52

We made a promise to deliver productivity, uptime, and low daily operating costs. But on the jobsite, talk is cheap. So we must walk the walk. We will listen, and respond, better than anyone. Designing machines that exceed expectations. Building quality into every product. And attacking your problems with passion. Whatever the challenge, we will step up. **We're on it.™**



A**ARTICULATED DUMP TRUCKS**

Haul more for less.

Six wheels keep on turning, fast cycles keep on churning. With powerful turbocharged and intercooled engines delivering big muscle to their six-wheel-drive axles, D-Series ADTs are virtually unstoppable. And with best-in-class payload-to-weight ratios, top fuel-efficiency ratings, and improved cycle times, you can count on the lowest cost per ton imaginable. And these are just the productivity advantages...

250D Articulated Dump Truck

- Net power (ISO 9249): 265 hp (198 kW) @ 2,000 rpm
- Operating weight: 40,340 lb. (18 300 kg) empty / 91,490 lb. (41 500 kg) loaded
- Heaped capacity: 18.0 cu. yd. (13.8 m³) @ 2-to-1 SAE ratio / 22.1 cu. yd. (16.9 m³) @ 1-to-1 SAE ratio
- Rated payload: 51,150 lb. (23 200 kg)



300D Articulated Dump Truck

- Net power (ISO 9249): 285 hp (212 kW) @ 2,200 rpm
- Operating weight: 42,990 lb. (19 500 kg) empty / 103,180 lb. (46 800 kg) loaded
- Heaped capacity: 21.7 cu. yd. (16.6 m³) @ 2-to-1 SAE ratio / 26.6 cu. yd. (20.3 m³) @ 1-to-1 SAE ratio
- Rated payload: 60,190 lb. (27 300 kg)



350D Articulated Dump Truck

- Net power (ISO 9249): 380 hp (283 kW) @ 1,800 rpm
- Operating weight: 61,730 lb. (28 000 kg) empty / 133,380 lb. (60 500 kg) loaded
- Heaped capacity: 26.3 cu. yd. (20.1 m³) @ 2-to-1 SAE ratio / 32.2 cu. yd. (24.6 m³) @ 1-to-1 SAE ratio
- Rated payload: 71,650 lb. (32 500 kg)



400D Articulated Dump Truck

- Net power (ISO 9249): 413 hp (308 kW) @ 1,800 rpm
- Operating weight: 65,960 lb. (29 920 kg) empty / 147,530 lb. (66 920 kg) loaded
- Heaped capacity: 29.4 cu. yd. (22.4 m³) @ 2-to-1 SAE ratio / 35.8 cu. yd. (27.4 m³) @ 1-to-1 SAE ratio
- Rated payload: 81,570 lb. (37 000 kg)



300D Water-Wagon Chassis

- Net power (ISO 9249): 285 hp (212 kW) @ 2,200 rpm
- Operating weight: 49,125 lb. (22 285 kg) empty / 108,215 lb. (49 085 kg) loaded
- Water tank capacity: 7,000 gal. (26 500 L)
- Water pump flow: 1,500 gpm @ 100 psi
- Maximum water load: 59,090 lb. (26 800 kg)



B ACKHOE LOADERS



Exceed your expectations.

Most backhoe loaders perform the same typical tasks. But when you want one that typically outperforms the others, you'll run a Deere. Choose from a variety of control options and machine configurations including the new 310SJ and 410J TMC machines with armrest-mounted joystick controls. Plus, tool-carrier options with one-of-a-kind set-and-forget parallel lift. Whether you opt for the value-leading 310J or the incomparable 710J, you can count on maximum productivity and versatility for years to come.

110 Tractor Loader Backhoe

- 41 net hp (30.6 kW) @ 2,600 rpm
- Typical operating weight: 7,600 lb. (3450 kg)
- Digging depth: 10 ft. 1 in. (3.1 m)
- Loader breakout force: 3,965 lb. (17.6 kN)
- Loader lifting capacity: 2,042 lb. (926 kg)
- Backhoe bucket size range: 12–36 in. (305–914 mm)

310J Backhoe

- 84 net hp (63 kW) @ 2,000 rpm
- Operating weight: 13,880 lb. (6295 kg)
- Digging depth: 14 ft. 3 in. (4.34 m)
- Loader breakout force: 9,350 lb. (41.6 kN)
- Loader lifting capacity: 6,600 lb. (2996 kg)
- Loader bucket size range: 1.00–1.25 cu. yd. (0.77–0.96 m³)
- Backhoe bucket size range: 12–30 in. (305–762 mm)

310SJ / 310SJ TC Backhoes

- 93 net hp (69 kW) @ 2,000 rpm
- Operating weights: 14,510 lb. (6580 kg) / 18,017 lb. (8171 kg)
- Digging depths: 14 ft. 6 in. (4.42 m) / 14 ft. 11 in.–18 ft. 5 in. (4.55–5.61 m)
- Loader breakout forces: 11,051–11,900 lb. (49.2–52.9 kN)
- Loader lifting capacities: 7,200–7,353 lb. (3269–3338 kg)
- Loader bucket size range: 1.00–1.31 cu. yd. (0.77–1.00 m³)
- Backhoe bucket size range: 12–30 in. (305–762 mm)

410J / 410J TC Backhoes

- 98 net hp (73 kW) @ 2,000 rpm
- Operating weights: 15,080 lb. (6839 kg) / 19,022 lb. (8626 kg)
- Digging depths: 15 ft. 10 in. (4.83 m) / 16 ft. 1 in.–20 ft. 0 in. (4.90–6.10 m)
- Loader breakout forces: 10,300–11,450 lb. (45.8–50.9 kN)
- Loader lifting capacities: 7,200–7,215 lb. (3269–3276 kg)
- Loader bucket size range: 1.25–1.50 cu. yd. (0.96–1.15 m³)
- Backhoe bucket size range: 12–30 in. (305–762 mm)

710J Backhoe

- 126 net hp (94 kW) @ 2,000 rpm
- Operating weight: 26,000 lb. (11 791 kg)
- Digging depth: 17 ft. 10 in. (5.44 m)
- Loader breakout force: 14,800 lb. (65.8 kN)
- Loader lifting capacity: 8,693 lb. (3947 kg)
- Loader bucket size range: 1.375–1.87 cu. yd. (1.05–1.43 m³)
- Backhoe bucket size range: 24–36 in. (610–914 mm)





CRAWLER DOZERS



Uncommon control, uncompromising results.

Others may offer hydrostatic drivetrains, but no other crawler comes close to delivering the performance of John Deere J-Series Crawler Dozers. Total Machine Control puts you in command via power turns, counterrotation, and infinitely variable travel speeds. And, these machines ship prewired for plug-and-play GPS-friendly Integrated Grade Control. No wonder they're operator favorites and the industry's resale-value leader.

450J Crawler Dozer

- 77 net hp (57 kW)
- Operating weight: 16,283–17,525 lb. (7386–7949 kg)
- Track on ground: 86 in. (2184 mm)
- Blade width range: 97–124 in. (2464–3150 mm)
- Undercarriage configurations: LT and LGP
- Add versatility with JDLink™, Integrated Grade Control, brush protection, winch, or ripper



550J Crawler Dozer

- 85 net hp (63 kW)
- Operating weight: 17,016–18,252 lb. (7718–8279 kg)
- Track on ground: 86 in. (2184 mm)
- Blade width range: 105–124 in. (2667–3150 mm)
- Undercarriage configurations: LT and LGP
- Add versatility with JDLink, Integrated Grade Control, brush protection, winch, or ripper



650J Crawler Dozer

- 99 net hp (74 kW)
- Operating weight: 18,560–19,750 lb. (8419–8977 kg)
- Track on ground: 87–92 in. (2210–2337 mm)
- Blade width range: 105–128 in. (2667–3150 mm)
- Undercarriage configurations: LT, XLT, and LGP
- Add versatility with JDLink, Integrated Grade Control, brush protection, winch, or ripper





CRAWLER DOZERS



Go beyond the limits of other dozers.

Other dozers can't measure up to the flexibility and operating ease you get with John Deere. These J-Series Crawler Dozers' dual-path hydrostatic drivetrains provide full-power turns, counterrotation, and infinitely variable track speeds. Total Machine Control lets an operator customize machine operating characteristics and response. With optional Integrated Grade Control, your dozer arrives from the factory plug-and-play ready to add the grade-control system that's best for you.

700J Crawler Dozer

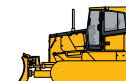
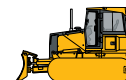
- 115 net hp (86 kW)
- Operating weight: 26,080–28,235 lb. (11 833–12 811 kg)
- Track on ground: 95–102 in. (2415–2600 mm)
- Blade width range: 120–132 in. (3048–3353 mm)
- Undercarriage configurations: LT, XLT, and LGP
- Add versatility with JDLink, Integrated Grade Control, brush protection, winch, or ripper

750J Crawler Dozer

- 145–155 net hp (108–116 kW)
- Operating weight: 32,585–36,725 lb. (14 778–16 655 kg)
- Track on ground: 102–121 in. (2591–3073 mm)
- Blade width range: 128–156 in. (3251–3962 mm)
- Blade configurations: PAT and outside dozer
- Undercarriage configurations: standard, LT, WT, and LGP
- Add versatility with JDLink, Integrated Grade Control, brush protection, winch, or ripper

850J Crawler Dozer

- 185–200 net hp (137–152 kW)
- Operating weight: 40,165–45,375 lb. (18 220–20 580 kg)
- Track on ground: 109–129 in. (2769–3284 mm)
- Blade width range: 128–168 in. (3251–4267 mm)
- Blade configurations: PAT and outside dozer
- Undercarriage configurations: standard, LT, WT, WLT, and LGP
- Add versatility with JDLink, Integrated Grade Control, brush protection, winch, or ripper





CRAWLER DOZERS



Big time.

Looking for big productivity and uptime, with small daily operating costs? Then take control of a 950J or 1050J. With their infinite speed control and full-featured hydrostatic drivetrain, you'll get nimble power turns and counterrotation along with fast and exacting blade work. Add one of these Deere dozers to your fleet and watch your crew's productivity hit the big time.

950J Crawler Dozer

- 247 net hp (184 kW) @ 1,600 rpm
- Operating weight: 56,361–59,255 lb. (25 565–26 877 kg)
- Track on ground: 118–131 in. (2997–3316 mm)
- Blade width range: 145–177 in. (3.7–4.5 m)
- Blade configurations: semi-U and straight
- Undercarriage configurations: standard and LGP
- Options: parallelogram multi-shank ripper



1050J Crawler Dozer

- 335 net hp (250 kW) @ 1,600 rpm
- Operating weight: 77,843 lb. (35 309 kg)
- Track on ground: 125 in. (3175 mm)
- Blade width range: 159–170 in. (4.04–4.3 m)
- Blade configurations: semi-U and U
- Undercarriage configurations: standard
- Options: parallelogram single- and multi-shank rippers



HIGH-SPEED DOZER



When versatility and speed are what you need.

Do more in less time with the 764HSD, the first new construction machine in decades. Combining the flotation of a crawler, agility of a loader, and finish-grading ability of a motor grader, no other dozer finishes faster or transports easier. Its rubber undercarriage travels over hard surfaces and between jobsites at speeds up to 18 mph. Add a compaction wheel, scraper, disk, or other rear drawbar attachment, and take on even more.

764 High-Speed Dozer

- 200 net hp (149 kW) @ 1,800 rpm
- Operating weight: 34,000 lb. (15 422 kg)
- Track on ground: 53 in. (1346 mm)
- Blade width: 132 in. (3353 mm)
- Blade configurations: PAT





CRAWLER LOADERS



Multitasking made easier.

Unsurpassed visibility, spacious cabs, easy-to-operate controls, and full-featured hydrostatic drivetrains make a wide variety of work a whole lot easier. You won't find more user-friendly machines. Standard equipment includes spacious air-conditioned cabs, exclusive cushioned undercarriages, and full-featured hydrostatic drivetrains to make a wide variety of work a whole lot easier.

605C Crawler Loader

- 99 net hp (74 kW) @ 2,200 rpm
- Operating weight: 23,600 lb. (10 700 kg)
- Bucket breakout force: 22,480 lb. (10 200 kg)
- Bucket capacity heaped: 1.7 cu. yd. (1.3 m³)
- Static tipping load: 14,750 lb. (6690 kg)
- Overall length (with bucket): 212 in. (5383 mm)
- Bucket width: 91 in. (2300 mm)



655C Series-II Crawler Loader

- 130 net hp (97 kW) @ 2,000 rpm
- Operating weight: 33,950 lb. (15 400 kg)
- Bucket breakout force: 27,675 lb. (12 550 kg)
- Bucket capacity heaped: 2.35 cu. yd. (1.8 m³)
- Static tipping load: 23,086 lb. (10 470 kg)
- Overall length (with bucket): 241 in. (6132 mm)
- Bucket width: 96 in. (2445 mm)



755D Crawler Loader

- 181 net hp (135 kW) @ 1,800 rpm
- Operating weight: 46,255 lb. (20 981 kg)
- Bucket breakout force: 36,869 lb. (164 kN)
- Bucket capacity heaped: 3.14 cu. yd. (2.4 m³)
- Static tipping load: 31,597 lb. (14 332 kg)
- Overall length (with bucket): 270 in. (6.85 m)
- Bucket width: 100 in. (2.53 m)





COMPACT EXCAVATORS



Don't bust your tail.

Some work requires a smaller machine to achieve bigger results. For those kinds of jobs, turn to a John Deere compact excavator. Their small stature, independent-swing boom, and zero-tail-swing design enable these highly maneuverable machines to put more work within reach. When getting there is half the battle, choose a 17D. Its retractable undercarriage enables it to squeeze through narrow openings. For mechanized muscle in places where shovels used to be the only option.

17D Compact Excavator

- 14.8 net hp (11.0 kW) @ 2,400 rpm
- Operating weight: 4,173 lb. (1,893 kg)
- Digging depth / Digging reach: 7 ft. 1 in. (2.17 m) / 12 ft. 10 in. (3.90 m)
- Bucket breakout force: 3,597 lb. (16.0 kN)
- Swing speed: 0-8.9 rpm
- Arm lengths: 3 ft. 1 in. (0.93 m) standard / 3 ft. 8 in. (1.13 m) long



27D Compact Excavator

- 26.4 net hp (19.7 kW) @ 2,200 rpm
- Operating weight: 6,358-6,730 lb. (2,887-3,055 kg)
- Digging depth: 8 ft. 6 in. (2.59 m)
- Digging reach: 15 ft. 4 in. (4.67 m)
- Bucket breakout force: 4,994 lb. (22.2 kN)
- Swing speed: 0-9.1 rpm
- Arm lengths: 3 ft. 10 in. (1.17 m) standard / 4 ft. 10 in. (1.47 m) long



35D Compact Excavator

- 28.6 net hp (21.3 kW) @ 2,400 rpm
- Operating weight: 7,760-8,135 lb. (3,520-3,690 kg)
- Digging depth / Digging reach: 10 ft. 0 in. (3.05 m) / 17 ft. 1 in. (5.21 m)
- Bucket breakout force: 6,182 lb. (27.5 kN)
- Swing speed: 0-9.0 rpm
- Arm lengths: 4 ft. 4 in. (1.31 m) standard / 5 ft. 8 in. (1.71 m) long



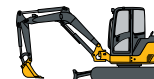
50D Compact Excavator

- 38.1 net hp (28.4 kW) @ 2,400 rpm
- Operating weight: 10,811-11,164 lb. (4,904-5,064 kg)
- Digging depth / Digging reach: 11 ft. 8 in. (3.55 m) / 19 ft. 6 in. (5.94 m)
- Bucket breakout force: 8,273 lb. (36.8 kN)
- Swing speed: 0-9.0 rpm
- Arm lengths: 4 ft. 6 in. (1.38 m) standard / 5 ft. 7 in. (1.69 m) long

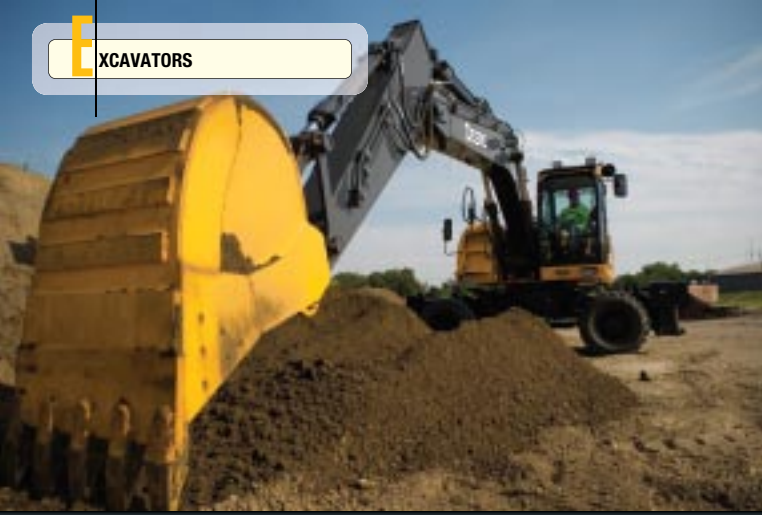


60D Compact Excavator

- 54 net hp (40.5 kW) @ 2,000 rpm
- Operating weight: 13,653 lb. (6,193 kg)
- Digging depth / Digging reach: 12 ft. 4 in. (3.77 m) / 20 ft. 5 in. (6.23 m)
- Bucket breakout force: 9,217 lb. (41.0 kN)
- Swing speed: 0-9.5 rpm
- Arm lengths: 4 ft. 11 in. (1.5 m) standard / 6 ft. 1 in. (1.85 m) long



EXCAVATORS



Now you're going places.

John Deere wheeled excavators easily navigate streets and hard surfaces to deliver powerful bucket forces in well-balanced, high-stability machines. Even with all that muscle outside, operators find quiet comfort inside spacious air-conditioned cabs. Like all John Deere excavators, low-effort levers deliver smooth boom and bucket control. Climb aboard a John Deere excavator and get to the bottom of increased productivity.

190D W Wheeled Excavator

- 159 net hp (119 kW) @ 2,000 rpm
- Operating weight: 43,211–44,029 lb. (19 600–19 971 kg)
- Digging depth / Maximum reach: 19 ft. 2 in. (5.83 m) / 31 ft. 5 in. (9.58 m)
- Bucket digging force: 22,916 lb. (101.9 kN)
- Arm length: 8 ft. 11 in. (2.71 m)
- Arm force: 18,465 lb. (82.1 kN)
- Optional two-piece boom

220D W Wheeled Excavator

- 159 net hp (119 kW) @ 2,000 rpm
- Operating weight: 49,207–49,888 lb. (22 320–22 629 kg)
- Digging depth / Maximum reach: 20 ft. 8 in. (6.29 m) / 33 ft. 4 in. (10.17 m)
- Bucket digging force: 29,000 lb. (128.9 kN)
- Arm length: 9 ft. 7 in. (2.91 m)
- Arm force: 22,930 lb. (101.9 kN)
- Optional two-piece boom



EXCAVATORS



Big performance in every size.

With a full line of models, there's a John Deere excavator for your kind of work. Regardless of the jobsite, a Deere excavator gets the job done with muscle, control, and peerless productivity. Efficient, cool-running engines and enhanced hydraulics make these the most-reliable and hardest-working Deere excavators yet. Climb into one of these best-in-class cabs and unleash a mighty workhorse to tackle your toughest jobs.

75D Excavator

- 54 net hp (40.5 kW) @ 2,000 rpm
- Operating weight: 17,743 lb. (8048 kg)
- Digging depth / Digging reach: 13 ft. 6 in. (4.11 m) / 21 ft. 1 in. (6.43 m)
- Bucket digging force: 12,368 lb. (55.0 kN)
- Maximum travel speed: 3.1 mph (5.0 km/h)
- Arm lengths: 5 ft. 4 in. (1.62 m) / 6 ft. 11 in. (2.12 m)
- Arm force: 8,554 lb. (38.1 kN)
- Drawbar pull: 14,661 lb. (6650 kg)



85D Excavator

- 54 net hp (40.5 kW) @ 2,000 rpm
- Operating weight: 18,821 lb. (8537 kg)
- Digging depth / Maximum reach: 13 ft. 0 in. (3.97 m) / 23 ft. 8 in. (7.21 m)
- Bucket digging force: 12,368 lb. (55.0 kN)
- Maximum travel speed: 3.1 mph (5.0 km/h)
- Arm lengths: 5 ft. 4 in. (1.62 m) / 6 ft. 11 in. (2.12 m)
- Arm force: 8,554 lb. (38.1 kN)
- Drawbar pull: 14,661 lb. (6650 kg)



120D Excavator

- 93 net hp (69 kW) @ 2,000 rpm
- Operating weight: 28,498–30,702 lb. (12 926–13 926 kg)
- Digging depth / Maximum reach: 19 ft. 11 in. (6.06 m) / 28 ft. 10 in. (8.79 m)
- Bucket digging force: 20,751 lb. (92.3 kN)
- Arm lengths: 8 ft. 3 in. (2.52 m) / 9 ft. 11 in. (3.01 m)
- Arm force: 12,823 lb. (57.0 kN)
- Drawbar pull: 24,729 lb. (11 216 kg)



135D Excavator

- 93 net hp (69 kW) @ 2,000 rpm
- Operating weight: 31,147–32,747 lb. (14 128–14 854 kg)
- Digging depth / Maximum reach: 19 ft. 9 in. (6.02 m) / 29 ft. 0 in. (8.85 m)
- Bucket digging force: 21,698 lb. (96.5 kN)
- Arm lengths: 8 ft. 3 in. (2.52 m) / 9 ft. 11 in. (3.01 m)
- Arm force: 12,942 lb. (57.6 kN)
- Drawbar pull: 26,303 lb. (11 931 kg)



(continued on page 24)

160D LC Excavator

- 121 net hp (90 kW) @ 2,200 rpm
- Operating weight: 39,980 lb. (18 151 kg)
- Digging depth / Maximum reach: 21 ft. 4 in. (6.49 m) / 30 ft. 7 in. (9.33 m)
- Bucket digging force: 22,697 lb. (101.0 kN)
- Arm lengths: 8 ft. 6 in. (2.60 m) / 10 ft. 2 in. (3.10 m)
- Arm force: 17,243 lb. (76.7 kN)
- Drawbar pull: 38,030 lb. (17 250 kg)

200D LC Excavator

- 159 net hp (119 kW) @ 2,000 rpm
- Operating weight: 49,940 lb. (22 673 kg)
- Digging depth / Maximum reach: 21 ft. 11 in. (6.68 m) / 32 ft. 7 in. (9.92 m)
- Bucket digging force: 29,099 lb. (129.4 kN)
- Arm lengths: 7 ft. 11 in. (2.42 m) / 9 ft. 7 in. (2.91 m)
- Arm force: 22,924 lb. (102.0 kN)
- Drawbar pull: 45,620 lb. (20 711 kg)

225D LC Excavator

- 159 net hp (118 kW) @ 2,000 rpm
- Operating weight: 53,936 lb. (24 487 kg)
- Digging depth / Maximum reach: 22 ft. 0 in. (6.70 m) / 32 ft. 10 in. (10.01 m)
- Bucket digging force: 29,099 lb. (129.4 kN)
- Arm lengths: 7 ft. 11 in. (2.42 m) / 9 ft. 7 in. (2.91 m)
- Arm force: 22,924 lb. (102.0 kN)
- Drawbar pull: 45,636 lb. (20 719 kg)

240D LC Excavator

- 177 net hp (132 kW) @ 2,000 rpm
- Operating weight: 54,654 lb. (24 791 kg)
- Digging depth: 24 ft. 7 in. (7.49 m)
- Maximum reach: 35 ft. 6 in. (10.81 m)
- Bucket digging force: 37,670 lb. (167.0 kN)
- Arm lengths: 9 ft. 9 in. (2.96 m) / 11 ft. 10 in. (3.61 m)
- Arm force: 24,020 lb. (106.8 kN)
- Drawbar pull: 49,920 lb. (22 650 kg)

270D LC Excavator

- 188 net hp (140 kW) @ 2,100 rpm
- Operating weight: 65,588 lb. (29 750 kg)
- Digging depth: 25 ft. 11 in. (7.91 m)
- Maximum reach: 37 ft. 1 in. (11.30 m)
- Bucket digging force: 37,480 lb. (166.7 kN)
- Arm lengths: 10 ft. 2 in. (3.11 m) / 12 ft. 4 in. (3.75 m)
- Arm force: 25,979 lb. (115.55 kN)
- Drawbar pull: 56,074 lb. (25 435 kg)



350D LC Excavator

- 271 net hp (202 kW) @ 1,900 rpm
- Operating weight: 77,970 lb. (35 367 kg)
- Digging depth: 26 ft. 10 in. (8.18 m)
- Maximum reach: 38 ft. 11 in. (11.86 m)
- Bucket digging force: 48,220 lb. (214.5 kN)
- Arm lengths: 8 ft. 9 in. (2.66 m) / 10 ft. 6 in. (3.2 m) / 13 ft. 1 in. (4.0 m)
- Arm force: 32,682 lb. (145.4 kN)
- Drawbar pull: 64,375 lb. (29 200 kg)

450D LC Excavator

- 348 net hp (260 kW) @ 1,800 rpm
- Operating weight: 106,180 lb. (48 163 kg)
- Digging depth / Maximum reach: 27 ft. 2 in. (8.27 m) / 41 ft. 0 in. (12.49 m)
- Bucket digging force: 57,111 lb. (254 kN)
- Arm lengths: 9 ft. 6 in. (2.9 m) / 9 ft. 6 in. (2.9 m) mass excavating / 11 ft. 2 in. (3.4 m) / 12 ft. 10 in. (3.9 m) / 16 ft. 1 in. (4.9 m)
- Arm force: 43,028 lb. (192 kN)
- Drawbar pull: 79,590 lb. (36 100 kg)

650D LC Excavator

- 463 net hp (345 kW) @ 1,800 rpm
- Operating weight: 152,192 lb. (69 033 kg)
- Digging depth / Maximum reach: 30 ft. 0 in. (9.14 m) / 45 ft. 5 in. (13.84 m)
- Bucket digging force: 65,189 lb. (290 kN)
- Arm lengths: 9 ft. 6 in. (2.9 m) mass excavating / 11 ft. 10 in. (3.6 m) / 13 ft. 9 in. (4.2 m) / 17 ft. 5 in. (5.3 m)
- Arm force: 50,352 lb. (224 kN)
- Drawbar pull: 101,666 lb. (46 115 kg)

850D LC Excavator

- 532 net hp (397 kW) @ 1,800 rpm
- Operating weight: 185,876 lb. (84 312 kg)
- Digging depth / Maximum reach: 31 ft. 5 in. (9.57 m) / 48 ft. 11 in. (14.91 m)
- Bucket digging force: 81,381 lb. (362 kN)
- Arm lengths: 9 ft. 8 in. (2.95 m) / 12 ft. 2 in. (3.7 m) / 14 ft. 5 in. (4.4 m) / 17 ft. 9 in. (5.4 m)
- Arm force: 62,272 lb. (277 kN)
- Drawbar pull: 126,193 lb. (57 240 kg)





Need more wiggle room?

Turn to these highly capable tight-turning machines and take on tasks that other compact loaders can't. Their unique oscillating stereo steering turns tight, yet articulates less, keeping the center of gravity in-line for superior tipping load capacity. Delivers exceptional breakout, reach, stability, and speed range, too.

244J Loader

- 59 net hp (44 kW) @ 2,800 rpm
- Operating weight: 11,552 lb. (5240 kg)
- Bucket capacity range: 1.0–1.4 cu. yd. (0.8–1.1 m³)
- Breakout force: 10,792 lb. (4895 kg)
- Full-turn tipping load: 7,718 lb. (3501 kg)



304J Loader

- 73 net hp (54 kW) @ 2,800 rpm
- Operating weight: 13,404 lb. (6080 kg)
- Bucket capacity: 1.4 cu. yd. (1.1 m³)
- Breakout force: 12,364 lb. (5608 kg)
- Full-turn tipping load: 9,315 lb. (4225 kg)



344J Loader

- 97 net hp (72 kW) @ 2,400 rpm
- Operating weight: 18,408 lb. (8350 kg)
- Bucket capacity range: 1.75–2.0 cu. yd. (1.3–1.5 m³)
- Breakout force: 17,310 lb. (7852 kg)
- Full-turn tipping load: 12,522 lb. (5680 kg)



LOADERS



Take productivity to a higher level.

Whether you're shuttling sand, stockpiling silage, placing pallets, or loading out trucks, K-Series Loaders will put you at the top of your game. Each comes loaded with production-boosting advantages such as state-of-the-art multifunction monitor with advanced diagnostics, convenient sealed-switch module, and innovative Quad-Cool™ system that keeps everything running cool.

444K Loader

- 128 net hp (95 kW) @ 2,100 rpm
- Operating weight: 24,372–26,619 lb. (11 055–12 074 kg)
- Bucket capacity range: 2.0–2.5 cu. yd. (1.5–1.9 m³)
- Breakout force: 13,352–18,104 lb. (6056–8212 kg)
- Full-turn tipping load: 13,459–17,796 lb. (6105–8072 kg)
- Configurations: Z-Bar, High-Lift, and Powerlift™

524K Loader

- 146 net hp (110 kW) @ 2,000 rpm
- Operating weight: 27,077–28,354 lb. (12 282–12 861 kg)
- Bucket capacity range: 2.5–2.75 cu. yd. (1.9–2.1 m³)
- Breakout force: 15,397–22,394 lb. (6984–8504 kg)
- Full-turn tipping load: 14,614–19,698 lb. (6629–8935 kg)
- Configuration: Z-Bar and High-Lift

544K Loader

- 167 net hp (125 kW) @ 1,900 rpm
- Operating weight: 28,224–30,511 lb. (12 802–13 840 kg)
- Bucket capacity range: 2.5–3.0 cu. yd. (1.9–2.3 m³)
- Breakout force: 17,558–24,251 lb. (7964–11 000 kg)
- Full-turn tipping load: 15,676–24,302 lb. (7110–11 023 kg)
- Configurations: Z-Bar, High-Lift, and Powerlift

624K Loader

- 198 net hp (147 kW) @ 1,800 rpm
- Operating weight: 33,477–36,275 lb. (15 185–16 454 kg)
- Bucket capacity range: 3.0–3.5 cu. yd. (2.3–2.7 m³)
- Breakout force: 21,354–28,484 lb. (9686–12 920 kg)
- Full-turn tipping load: 19,674–26,524 lb. (8924–12 031 kg)
- Configurations: Z-Bar, High-Lift, and Powerlift



LOADERS



Make a big production out of everything.

Unmatched stability, the smoothest ride on the jobsite, and impressive loading performance — K-Series Loaders deliver everything you want in a production-class loader. Each is loaded with productivity- and uptime-boosting advantages including smooth-as-silk PowerShift™ transmissions, high-torque Tier 3 diesels, Quad-Cool™, and state-of-the-art multifunction monitors. Opt for NeverGrease™ pin joints for a big uptime boost.

644K Loader

- 232 net hp (173 kW) @ 1,700 rpm
- Operating weight: 40,036–43,563 lb. (18 160–19 760 kg)
- Bucket capacity: 4.0–4.25 cu. yd. (3.1–3.2 m³)
- Breakout force: 26,519–33,903 lb. (12 029–15 378 kg)
- Full-turn tipping load: 20,882–28,937 lb. (9472–13 126 kg)
- Configurations: Z-Bar, High-Lift, and Powerllec™

724K Loader

- 264 net hp (197 kW) @ 1,800 rpm
- Operating weight: 41,985–42,673 lb. (19 044–19 356 kg)
- Bucket capacity range: 4.25–4.75 cu. yd. (3.2–3.6 m³)
- Breakout force: 28,590–34,408 lb. (12 968–15 607 kg)
- Full-turn tipping load: 24,885–31,556 lb. (11 287–14 318 kg)
- Configurations: Z-Bar and High-Lift

744K Loader

- 304 net hp (227 kW) @ 1,500 rpm
- Operating weight: 53,312–54,527 lb. (24 182–24 733 kg)
- Bucket capacity range: 5.25–5.75 cu. yd. (4.0–4.4 m³)
- Breakout force: 38,433–42,805 lb. (17 433–19 416 kg)
- Full-turn tipping load: 29,669–39,152 lb. (13 458–17 759 kg)
- Configurations: Z-Bar and High-Lift

824K Loader

- 333 net hp (248 kW) @ 1,600 rpm
- Operating weight: 57,783–58,894 lb. (26 210–26 714 kg)
- Bucket capacity range: 6.0–6.75 cu. yd. (4.6–5.2 m³)
- Breakout force: 38,572–41,678 lb. (17 496–18 905 kg)
- Full-turn tipping load: 32,027–40,236 lb. (14 527–18 251 kg)
- Configurations: Z-Bar and High-Lift

844K Loader

- 380 net hp (283 kW) @ 1,600 rpm
- Operating weight: 70,089–71,734 lb. (31 792–32 538 kg)
- Bucket capacity range: 6.25–8.1 cu. yd. (4.6–6.2 m³)
- Breakout force: 42,576–47,860 lb. (19,312–21 709 kg)
- Full-turn tipping load: 43,173–45,737 lb. (19 583–20 746 kg)
- Configuration: Z-Bar





Not your “garden-variety” loader tractors.

If you think the 210LJ is just another grading tractor with yellow paint, think again. Its unitized mainframe, integral three-point hitch, and construction-grade loader give it uncommon stamina and strength. Equip one with an available cab and PTO, and take on an even wider variety of work. If you need something a little smaller, opt for the 110 Tractor Loader. Either way, you'll experience the same great product support you've come to expect from John Deere.

110 Tractor Loader Backhoe

- 41 net hp (30.6 kW) @ 2,600 rpm
- Operating weight: 7,600 lb. (3450 kg)
- Loader breakout force: 3,965 lb. (17.6 kN)
- Loader lifting capacity: 2,042 lb. (926 kg)

210LJ Landscape Loader

- 84 net hp (62.6 kW) @ 2,000 rpm turbocharged
- Operating weight: 9,130 lb. (4140 kg)
- Bucket capacity range: 1.00–1.25 cu. yd. (0.77–0.96 m³)
- Breakout force: 7,900 lb. (35.1 kN)
- Lifting capacity at full height: 5,280 lb. (2397 kg)



MOTOR GRADERS



Freedom of choice.

Packed with best-in-class productivity- and uptime-boosting advantages, the G-Series Graders give you everything you need to do your best — tandem- or six-wheel-drive configurations with electrohydraulic or conventional familiar-pattern controls, front- or mid-mount scarifiers, and an Integrated Grade Control (IGC) package that lets you run the grade-control system of your choice.

670G Motor Grader

- 145–185 net hp (108–138 kW) @ 2,100 rpm
- 40,930 lb. (18,582 kg) with front push block and ripper
- Blade pull: 28,220 lb. (12,800 kg)
- Tandem drive
- Transmission: direct-drive John Deere PowerShift Plus™



672G Motor Grader

- 170–195 net hp (127–145 kW) @ 2,100 rpm
- 42,740 lb. (19,404 kg) with front push block and ripper
- Blade pull: 42,120 lb. (19,105 kg)
- Six-wheel drive
- Transmission: direct-drive John Deere PowerShift Plus



770G Motor Grader

- 165–230 net hp (123–172 kW) @ 2,100 rpm
- 41,350 lb. (18,773 kg) with front push block and ripper
- Blade pull: 28,990 lb. (13,150 kg)
- Tandem drive
- Transmission: direct-drive John Deere PowerShift Plus



772G Motor Grader

- 194–245 net hp (145–183 kW) @ 2,100 rpm
- 43,170 lb. (19,599 kg) with front push block and ripper
- Blade pull: 43,200 lb. (19,595 kg)
- Six-wheel drive
- Transmission: direct-drive John Deere PowerShift Plus



870G Motor Grader

- 180–255 net hp (134–190 kW) @ 2,100 rpm
- 42,270 lb. (19,191 kg) with front push block and ripper
- Blade pull: 29,320 lb. (13,299 kg)
- Tandem drive
- Transmission: direct-drive John Deere PowerShift Plus



872G Motor Grader

- 214–275 net hp (160–205 kW) @ 2,100 rpm
- 44,220 lb. (20,076 kg) with front push block and ripper
- Blade pull: 43,760 lb. (19,849 kg)
- Six-wheel drive
- Transmission: direct-drive John Deere PowerShift Plus





Small wonders.

Talk about your overachievers — the 300-Series Skid Steers get more done, more reliably, for less. With industry-leading breakout, pushing power, stability, visibility, and wide-open service access, plus a wide variety of Worksite Pro™ attachments, these small-but-mighty multi-purpose machines work wonders on almost any jobsite.

313 Skid Steer

- 45 net hp (33.5 kW) / Operating weight: 5,150 lb. (2338 kg)
- Bucket breakout force: 2,178–3,300 lb. (989–1498 kg)
- Tipping load: 2,525 lb. (1146 kg)
- Tires: 10 x 16.5 8 PR Extra Wall



315 Skid Steer

- 45 net hp (33.5 kW) / Operating weight: 5,200 lb. (2361 kg)
- Bucket breakout force: 2,440–3,300 lb. (1108–1498 kg)
- Tipping load: 3,000 lb. (1362 kg)
- Tires: 10 x 16.5 8 PR Extra Wall



317 Skid Steer

- 57 net hp (42.5 kW) / Operating weight: 6,300 lb. (2860 kg)
- Bucket breakout force: 3,900–5,500 lb. (1771–2497 kg)
- Tipping load: 3,700 lb. (1680 kg)
- Tires: 10 x 16.5 8 PR Extra Wall



320 Skid Steer

- 62 net hp (46.2 kW) / Operating weight: 6,435 lb. (2921 kg)
- Bucket breakout force: 3,900–5,500 lb. (1771–2497 kg)
- Tipping load: 3,900 lb. (1771 kg)
- Tires: 12 x 16.5 10 PR SKS



325 Skid Steer

- 70 net hp (52.2 kW) / Operating weight: 8,390 lb. (3809 kg)
- Bucket breakout force: 5,300–7,500 lb. (2406–3405 kg)
- Tipping load: 5,000 lb. (2270 kg)
- Tires: 12 x 16.5 8 PR SKS
- Electrohydraulic joystick controls available



328 Skid Steer

- 76 net hp (56.7 kW) / Operating weight: 8,580 lb. (3895 kg)
- Bucket breakout force: 7,430–10,500 lb. (3373–4767 kg)
- Tipping load: 5,500 lb. (2497 kg)
- Tires: 14 x 17.5 12 PR Extra Wall
- Electrohydraulic joystick controls available



332 Skid Steer

- 85 net hp (63.4 kW) / Operating weight: 9,160 lb. (4159 kg)
- Bucket breakout force: 8,210–11,600 lb. (3727–5266 kg)
- Tipping load: 6,350 lb. (2883 kg)
- Tires: 14 x 17.5 14 PR Hauler
- Electrohydraulic joystick controls available





COMPACT TRACK LOADERS



Track stars.

Although they share several of the same best-in-class features with their 300-Series siblings, the CT315, CT322, and CT332 are far more than skid steers on tracks. Heavy-duty booms and coolers give them the muscle to deliver impressive breakout and tractive effort. Plus, their rubber-track undercarriage provides a smooth ride and unsurpassed durability, stability, and ground clearance.

CT315 Compact Track Loader

- 45 net hp (33.5 kW)
- Tipping load: 4,412 lb. (2003 kg)
- Rated operating capacity:
 - 1,500 lb. (681 kg) at 35 percent of tipping load /
 - 2,206 lb. (1002 kg) at 50 percent of tipping load
- Bucket breakout force: 2,178–3,300 lb. (989–1498 kg)
- Tractive effort: 8,000 lbf (3629 kgf)
- Ground pressure: 4.8 psi (33 kPa)
- Operating weight: 6,800 lb. (3087 kg)
- Ground speed: 6.0 mph (9.7 km/h)



CT322 Compact Track Loader

- 62 net hp (46.2 kW)
- Tipping load: 6,400 lb. (2906 kg)
- Rated operating capacity:
 - 2,200 lb. (999 kg) at 35 percent of tipping load /
 - 3,200 lb. (1453 kg) at 50 percent of tipping load
- Bucket breakout force: 4,300–6,050 lb. (1952–2747 kg)
- Tractive effort: 8,000 lbf (3629 kgf)
- Ground pressure: 5.1 psi (35 kPa)
- Operating weight: 8,305 lb. (3770 kg)
- Ground speed with two-speed option: 5.5–8.5 mph (8.9–13.7 km/h)



CT332 Compact Track Loader

- 76 net hp (56.7 kW)
- Tipping load: 9,200 lb. (4177 kg)
- Rated operating capacity:
 - 3,200 lb. (1453 kg) at 35 percent of tipping load /
 - 4,600 lb. (2088 kg) at 50 percent of tipping load
- Bucket breakout force: 8,210–11,600 lb. (3727–5266 kg)
- Tractive effort: 11,500 lbf (5227 kgf)
- Ground pressure: 4.3 psi (30 kPa)
- Operating weight: 10,825 lb. (4915 kg)
- Ground speed with two-speed option: 5.3–7.8 mph (8.5–12.6 km/h)
- Electrohydraulic joystick controls available





ASTE-HANDLER LOADERS



Move waste with haste.

These loaders are fortified to tackle even the toughest transfer-station duties. Extensive guarding keeps obstacles from trashing your machine uptime, and state-of-the-art electronics deliver rock-solid reliability. To keep things cool, hydraulically driven fans reverse automatically to blow away airborne trash. And these loaders' great visibility, cab comfort, and brick-house build make for productivity and uptime that just won't quit.

544K Waste-Handler Loader

- 167 net hp (125 kW) @ 1,900 rpm
- Operating weight: 35,008–35,729 lb. (15 879–16 206 kg)
- Bucket capacity range: 4.0–5.0 cu. yd. (2.3–3.8 m³)
- Dump clearance, full height, standard boom: 8 ft. 4 in.–8 ft. 10 in. (2.55–2.69 m)
- Dump clearance, full height, high lift: 9 ft. 10 in.–10 ft. 2 in. (2.99–3.11 m)



624K Waste-Handler Loader

- 198 net hp (147 kW) @ 1,800 rpm
- Operating weight: 38,404–39,549 lb. (17 420–17 939 kg)
- Bucket capacity range: 4.0–6.0 cu. yd. (3.1–4.6 m³)
- Dump clearance, full height, standard boom: 8 ft. 7 in.–9 ft. 3 in. (2.61–2.77 m)
- Dump clearance, full height, high lift: 9 ft. 3 in.–10 ft. 3 in. (2.98–3.09 m)



644K Waste-Handler Loader

- 232 net hp (173 kW) @ 1,700 rpm
- Operating weight: 46,442–47,897 lb. (21 066–21 725 kg)
- Bucket capacity range: 5.0–7.0 cu. yd. (3.8–5.4 m³)
- Dump clearance, full height, standard boom: 8 ft. 10 in.–9 ft. 8 in. (2.69–2.96 m)
- Dump clearance, full height, high lift: 10 ft. 6 in.–11 ft. 4 in. (3.21–3.45 m)



724K Waste-Handler Loader

- 264 net hp (197 kW) @ 1,800 rpm
- Operating weight: 48,588–50,086 lb. (22 039–22 719 kg)
- Bucket capacity range: 5.0–7.0 cu. yd. (3.8–5.4 m³)
- Dump clearance, full height, standard boom: 8 ft. 10 in.–9 ft. 8 in. (2.69–2.96 m)
- Dump clearance, full height, high lift: 10 ft. 6 in.–11 ft. 4 in. (3.21–3.45 m)



744K Waste-Handler Loader

- 304 net hp (227 kW) @ 1,500 rpm
- Operating weight: 51,749–66,159 lb. (23 473–30 009 kg)
- Bucket capacity range: 6.0–8.0 cu. yd. (4.7–6.1 m³)
- Dump clearance, full height, standard boom: 5 ft. 10 in.–6 ft. 1 in. (1.77–1.87 m)
- Dump clearance, full height, high lift: 7 ft. 8 in.–8 ft. 0 in. (2.33–2.45 m)





ASTE-HANDLER DOZERS

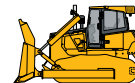


Purpose built to handle waste.

John Deere waste-handler dozers are engineered specifically to meet the challenges of moving solid waste. Everything susceptible to damage has been sealed, moved, rerouted, or reengineered to keep trash and damage at bay. And, these dozers come standard with a reversing fan that automatically blows away refuse. Keep cool, clean, and productive with a John Deere waste-handler dozer.

850J Waste-Handler Dozer

- 185–200 net hp (137–151 kW) @ 1,800 rpm
- Operating weight: 44,665–48,906 lb. (20 260–22 183 kg)
- Undercarriage / blade configurations / blade capacity (with trash rack): WLT / PAT / 12.7 cu. yd. (9.71 m³), LGP / PAT / 12.9 cu. yd. (9.86 m³), WT / semi-U / 14.5 cu. yd. (11.09 m³), and LGP / semi-U / 15.2 cu. yd. (11.62 m³)



950J Waste-Handler Dozer

- 247 net hp (184 kW) @ 1,600 rpm
- Operating weight: 58,462 lb. (26,518 kg)
- Blade capacity (with trash rack): semi-U blade: 21.8 cu. yd. (16.65 m³)



1050J Waste-Handler Dozer

- 335 net hp (250 kW) @ 1,800 rpm
- Operating weight: 80,967 lb. (36 726 kg)
- Blade capacity (with trash rack): semi-U blade: 25.8 cu. yd. (19.79 m³) / U blade: 32.8 cu. yd. (25.05 m³)





SCRAPER TRACTORS



Give your earthmoving operations more pull.

If you make your living moving dirt, you won't find a better investment for pulling heavy-duty scrapers, disks, oversized rollers, heavy rippers, or water tanks. John Deere Scraper Special four-wheel-drive tractors feature spacious and quiet cabs, heavy-duty frames and axles, and 18-speed PowerShift™ transmissions. Plus, they're backed by a two-year/2,000-hour full-factory warranty and unsurpassed dealer support.

9430 Scraper Special

- 425 net hp (317 kW) @ 2,100 rpm
- Scraper package with front and rear axle supports, heavy-duty drawbar support, heavy-duty oscillation joint, beacon, backup alarm, 18-speed transmission, and heavy-duty wheel hubs
- Major options: 75-gpm hydraulic system, weights, ActiveSeat™ (industry exclusive), and tires
- Two-year/2,000-hour full-factory warranty; additional warranty available

9530 Scraper Special

- 475 net hp (354 kW) @ 2,100 rpm
- Scraper package with front and rear axle supports, heavy-duty drawbar support, heavy-duty oscillation joint, beacon, backup alarm, 18-speed transmission, and heavy-duty wheel hubs
- Major options: 75-gpm hydraulic system, weights, ActiveSeat (industry exclusive), and tires
- Two-year/2,000-hour full-factory warranty; additional warranty available

9630 Scraper Special

- 530 net hp (395 kW) @ 2,100 rpm
- Scraper package with front and rear axle supports, heavy-duty drawbar support, heavy-duty oscillation joint, beacon, backup alarm, 18-speed transmission, and heavy-duty wheel hubs
- Major options: 75-gpm hydraulic system, weights, ActiveSeat (industry exclusive), and tires
- Two-year/2,000-hour full-factory warranty; additional warranty available





Move material at a lower cost per yard.

All ten of these construction-grade American-made John Deere pull-type scrapers are built to save you money and maximize uptime. Cut widths range from 10 to 14.5 feet, with heaped capacities from 15 to 21 cubic yards. The AutoLoad™ option automates the scraper's hydraulic-lift function by varying the blade height to maintain consistent loads, cut profiles, and maximum productivity. Once engaged even first-time operators will load like pros.

Ejector Style

1512E: 15.5-yd., 12-ft. cut

1810E: 18.3-yd., 10-ft. 6-in. cut

1814E: 18.0-yd., 14-ft. 6-in. cut

2112E: 21.0-yd., 12-ft. cut

- Optimum blade and bowl design for maximum productivity
- Two-position router bits, and several edge patterns for different soil conditions
- Zinc-coated hydraulic lines and ORFS fittings
- GPS/laser racks, rear bumpers, and drawbar and scraper-to-scraper quick-attach hitches available
- Six-month warranty (more available)
- 24–28-percent scraper tongue weight distribution
- Exclusive AutoLoad™ system available
- Push-loading approved
- Brakes available on 18- and 21-yard models



Carryall Style

1510C: 15.0-yd., 10-ft. cut

1512C: 15.5-yd., 12-ft. cut

1810C: 18.0-yd., 10-ft. cut

1812C: 18.0-yd., 12-ft. cut

1814C: 18.0-yd., 14-ft. cut

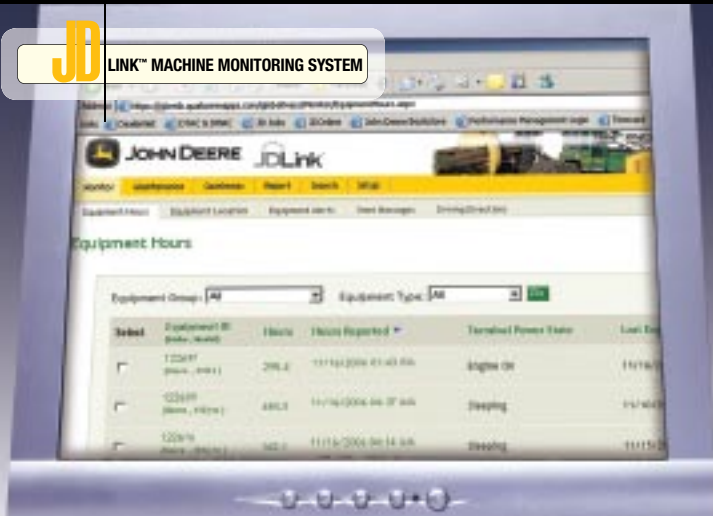
2112C: 21.5-yd., 12-ft. cut

- Optimum blade and bowl design for maximum productivity
- Two-position router bits, and several edge patterns for different soil conditions
- Zinc-coated hydraulic lines and ORFS fittings
- GPS/laser racks, rear bumpers, and drawbar and scraper-to-scraper quick-attach hitches available
- Six-month warranty; more available
- 24–28-percent scraper tongue weight distribution
- Exclusive AutoLoad system available
- Brakes available on 18- and 21-yard models





LINK™ MACHINE MONITORING SYSTEM



Knowledge is power.

JDLink is a wireless communications system that delivers essential location, utilization, performance, and maintenance data to contractors. This innovative system, developed by QUALCOMM® exclusively for John Deere, combines field-installed hardware and JDLink Network Services to monitor and wirelessly transmit machine location, functions, engine hours, fuel information, alerts, and other important data.

With JDLink, You Will Optimize Utilization and Increase Revenue by:

- Monitoring machine health
- Extending life through preventive maintenance
- Simplifying maintenance scheduling and documentation
- Reducing downtime through machine alerts of potential downtime
- Tracking rental fleet machines and hours of use
- Documenting machine and operator productivity
- Recovering stolen machines through GPS tracking

JDLink Standard Is the All-Makes Solution

The JDLink Standard system is a wireless communications system that tells you essential location, performance, and maintenance data for superior productivity and operating efficiency. You can instantly access machine status, location, summary reports, alerts, and fuel usage and maintenance logs.

JDLink Advanced

The Advanced version of JDLink provides all of the features of JDLink Standard and adds Advanced Utilization that keeps contractors aware of machine-hour percentages — working versus idling. Advanced JDLink also provides low-fuel warnings and dashboard alerts so your equipment maintenance managers better understand machine efficiency, while being warned of potential problems. All alerts are sent via the Internet, cell phone, or pager.

JDLink Ultimate

This JDLink provides all of the features of both Standard and Advanced JDLink, but adds Ultimate Utilization — the greatest level of insight into your equipment and how it's being used. In addition to the machine-monitoring features found in the other systems, Ultimate shows idle, low-load, medium-load, and high-load work levels.

JDLink Direct

Direct provides most of the same features as Standard, Advanced, and Ultimate, but provides the ability to download data directly from the machine rather than accessing it through the Internet. Besides the machine-direct capabilities, the only difference between JDLink Direct and the Standard, Advanced, and Ultimate systems is the lack of GPS location data.

Fast. Fair. Flexible.

Whether you're in the construction, forestry, utility, or landscape market, John Deere Credit understands your business — and knows what it takes to help you succeed. From simple documentation, to quick turn time, to flexible contracts and more, we offer solutions that give you greater flexibility in your daily operations.



JOHN DEERE
CREDIT



Contact your dealer for more information, or ask for a Construction & Forestry marketing representative by calling our customer service line at 800-771-0681 (U.S.) or 800-321-3766 (Canada).

www.JohnDeereCredit.com

www.JohnDeereCredit.ca

Retail Installment Loans

- New and used equipment financing
- Easy-to-understand documentation
- Clearly stated APR
- No blanket liens
- Online account access at www.MyJDCAccount.com (U.S. only)
- Physical damage insurance is available and can be financed (U.S. only)
- Flexibility on down payments, alternative collateral, skip payments, and more

Leasing

- Simple documentation
- Flexible terms
- Multiple end-of-lease options: Extend the lease, purchase the equipment, or return the equipment
- Residual values can be stated or set at Fair Market Value
- Easy alternative to long-term rentals
- Lets you match hours and terms to specific jobs
- Less money up front and lower payments in most cases
- Potential tax benefits*

*Consult your tax advisor.

More Than Just Equipment Financing

For U.S. customers, John Deere Credit also offers PowerPlan™, a revolving credit plan for parts, service, attachments, rentals, and more.

PowerPlan Benefits (U.S. only)

- PowerPlan makes it easy to manage owning and operating costs
- Our Major Purchase Option offers fixed rates, terms, and payments on PowerPlan purchases of parts, service, equipment, and attachments over \$3,000
- PowerPlan is accepted at more than 400 U.S. locations



CUSTOMER PERSONAL SERVICE



It's all about you.

In many ways we are defined by our customers. You're the ones putting our equipment through its paces. With your input, we have developed Customer Personal Service (CPS) — a proactive strategy on machine maintenance and a lineup of programs that can be adapted to your specific needs. CPS covers the life cycle of your equipment and helps you manage your operating costs. CPS can even be applied to non-John Deere equipment. It's all about you, not us.

Extended Coverage

Flexibility is the key to CPS. Extended Coverage warranty lets you custom-fit coverage to your needs, giving you a fixed cost for machine repairs over a given period of time. Whether you work in a severe-service operation or just want to spread the risk of doing business, Extended Coverage warranty is a great way to protect your cash flow. An Extended Coverage warranty also travels well because it's backed by the John Deere Construction & Forestry Company and honored by all John Deere Construction & Forestry dealers.

Planned Maintenance Agreements

Keeping you up and running and minimizing downtime is the essence of CPS and the ultimate goal of the John Deere Construction & Forestry Company. The first step is ensuring critical maintenance work is done on schedule. Planned Maintenance helps protect you from the expense and stress of catastrophic failures, while letting you avoid waste-disposal hassles so you can focus on your job. Onsite planned maintenance service is performed where and when you need it.

Maintenance and Repair Contracts (MARC)

A MARC contract is a pact between you and your dealer that significantly improves productivity, uptime, and repair expenses. It aims to reduce fluid contamination, extend component life, and save money by changing fluids exactly when needed, not at predetermined levels.

Customer Personal Service Online

CPS Online is a pathway to the most precious commodity of all — information. It's a secured Web site that links you to your machine specs and owning and operating costs. Self-register on CPS Online, and you can order parts or technical manual CD-ROMs, e-mail your dealer, or research part specifications for non-John Deere equipment. Access through the JohnDeere.com contractor's or logger's Web site.

Certified Customer Support

Customer support advisors, parts advisors, and service technicians are certified to have the knowledge and skills to help make important decisions on machine maintenance and repair. They understand the Customer Personal Service program inside and out, and will help you customize a plan that meets your specific needs.

Parts Availability

John Deere is all about improving uptime and profitability, which is why we've made such a strong commitment to parts availability. We believe that wear parts, lubes, filters, and components that can be replaced quickly will be waiting at your dealership when you need them so you can get back to work and make money.

Remanufactured Components

Get like-new performance for a fraction of the price. Each transmission, axle, engine, hydraulic pump, motor, cylinder, control valve, rotary manifold, fuel-injector nozzle, or directional control valve helps avoid downtime if it's installed before the old component fails. Each unit is remanufactured to OEM specs with certified parts. They're tested for leaks and performance, and backed by a one-year/1,500-hour warranty for parts and labor when dealer installed.

Component Life Cycle

This gives you vital information on the projected life span of components. That way you can make informed decisions on machine maintenance because you'll know approximately how many hours of use you can expect from an engine, transmission, or hydraulic pump. Replacing expensive components before they fail is the best way to control costs and reduce downtime. Very few manufacturers give their customers access to this information. We do.

Wear Parts

John Deere offers the most innovative line of wear parts in the business. Fanggs™ Teeth, Stinger™ Scarifier Blades, Jagz™ Edges, and Swampers™ Poly-Teeth — let you work smarter, enhance productivity, and increase profits. Name another company with the same commitment to wear parts.

Undercarriage Systems

Made with an uncompromising commitment to quality, John Deere undercarriages meet or exceed OEM specifications. State-of-the-art manufacturing processes and quality steel combine to forge a more durable undercarriage system that delivers hours of dependable wear. John Deere backs that with a three-year/4,000-hour warranty when installed by a John Deere dealer. Deere undercarriage components are also available for Cat dozers from D4 all the way to D11.

Extended Life Track Chain Featuring SC-2™-Coated Bushings

Spawned by a metallurgic breakthrough, SC-2-coated bushings can lower operating costs in abrasive conditions by extending bushing life and possibly eliminating a pin and bushing turn. Extended Life track chain is compatible with existing undercarriage designs, require no special tools, and will fit many other brands of dozers.

Maximum Life Undercarriage System Featuring SC-2-Coated Bushings

Maximum Life undercarriage builds on the success of the SC-2-coated bushings by pairing the Extended Life track chain with larger track rollers, carrier rollers, and idlers to further extend the wear life of the complete undercarriage system.

Wear assurance policies are available from your authorized John Deere dealer for both the Extended Life Track Chain and the Maximum Life Undercarriage System. John Deere will stand behind our promise of longer life on the Extended Life track chain and Maximum Life undercarriage.

Condition-Based Maintenance

Condition-Based Maintenance (CBM) gives you all the tools you need to squeeze every possible hour out of each machine. It also saves money by matching service intervals to the working environment or actual fluid conditions. CBM is unique because it involves maintenance that is predictive as well as preventive. CBM relies on fluid analysis, the on-board monitoring system, and input from customers and operators to increase uptime, lower operating expenses, improve machine performance, and extend the life of your equipment.

Web Bookstore

John Deere's online bookstore, www.jdtechinfo.com, is the central location for John Deere Construction, Forestry, and Hitachi technical information available in print, on CD/DVD, or as downloadable PDFs. There is also a technical support call center which provides product guidance and order assistance.

