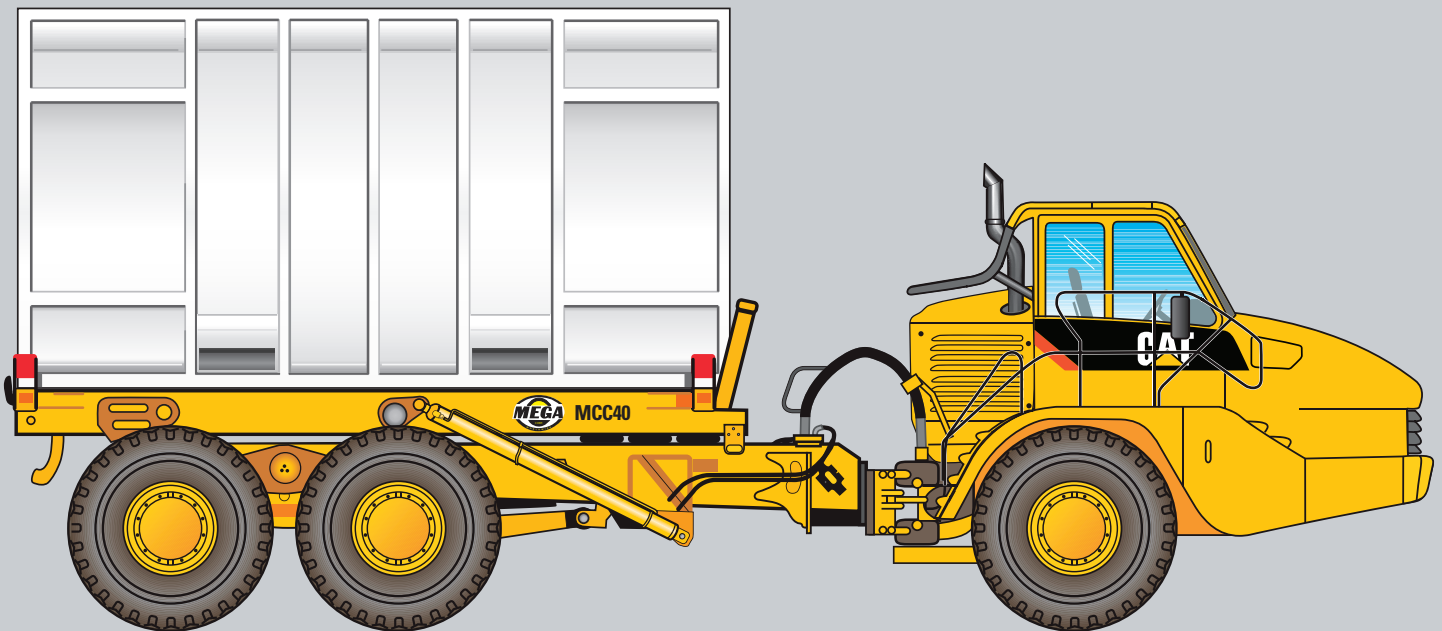


# Mega MCC35 and MCC40 Articulated Container Carrier

Designed for Hauling 20 ft ISO Containers



Based on Cat® 735 and 740 Articulated Truck chassis offering proven reliability and durability, high performance and productivity, optimum payload, operator comfort and ease of operation.

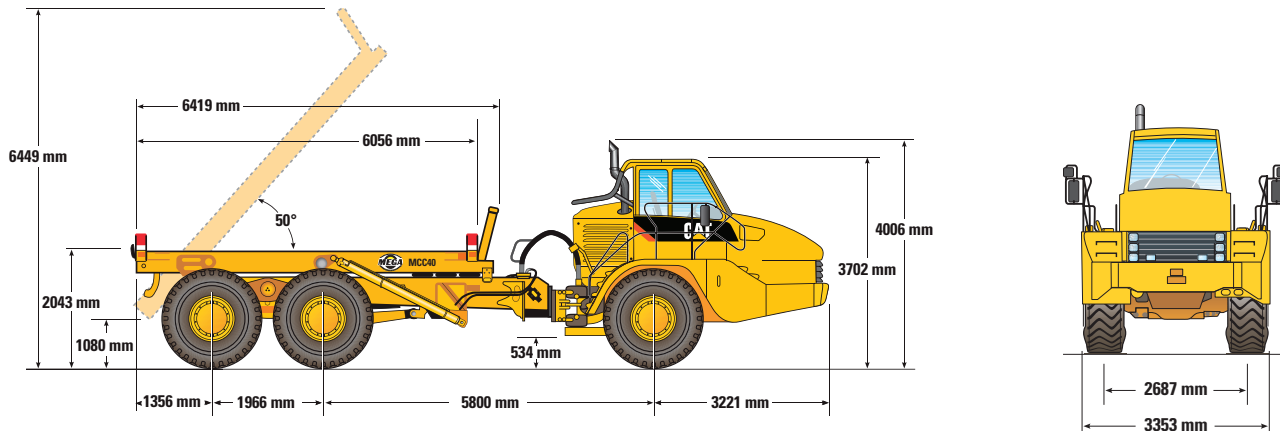
<b>ENGINE</b>				
Cat® C15 ACERT™	<b>MCC35</b>		<b>MCC40</b>	
Gross Power — SAE J1995	324 kW	435 hp	341 kW	457 hp
Net Power — SAE J1349	313 kW	419 hp	325 kW	436 hp

<b>PAYLOAD</b>				
	<b>MCC35</b>		<b>MCC40</b>	
Rated Payload	32 370 kg	35.7 tons	42 300 kg	46.6 tons

**CATERPILLAR®**

# Mega MCC35 and MCC40 Articulated Container Carrier

## DIMENSIONS



## Performance and Productivity — Power Train

### Cat® C15 Engine with ACERT Technology

A combination of proven systems and innovative new technologies, ACERT engines optimize performance while meeting EPA Tier 3 and EU Stage 3a engine exhaust emission regulations.

### Electronic Transmission

The Caterpillar seven-speed forward and two-speed reverse, electronically controlled transmission is designed specifically for the articulated truck and its applications. It features anti-hunt shift strategy for speed continuity.

## Optimum Payload

Long wheel base rear frame allows maximum axle loading for optimal payload; equates to more material being moved and a more productive and profitable operation.

## Suspension and Traction Control

Three-point front suspension and cross-axle differential locking system provide maximum performance in the most adverse conditions.

## Operator Comfort and Ease of Operation

Exceptional operator comfort and productivity — large center-mounted cab; excellent, all-around visibility; oscillating front axle; air-suspension seat; full-size trainer seat; and ergonomic design for simple, easy operation.

## Container Frame

### Safety

- Headboard for container frame
- Interlock to prevent dumping container if all locks not engaged
- Light in dash to confirm all container locks engaged

### Ease of Operation:

- Robust container corner guides
- Cab actuated hydraulic container twistlocks reliable in diverse conditions
- Programmable automated lift/pause/dump sequence
- Optional hydraulic tailgate locking mechanism (stinger)

OPERATING WEIGHTS	MCC35		MCC40	
Front Axle — Empty	18 300 kg	40,300 lb	19 600 kg	43,100 lb
Center Axle — Empty	6200 kg	13,600 lb	6800 kg	15,000 lb
Rear Axle — Empty	5600 kg	12,300 lb	6100 kg	13,400 lb
<b>Total — Empty</b>	<b>30 100 kg</b>	<b>66,200 lb</b>	<b>32 500 kg</b>	<b>71,500 lb</b>
Front Axle — Rated Load	3300 kg	7,200 lb	4900 kg	10,800 lb
Center Axle — Rated Load	14 570 kg	32,100 lb	18 700 kg	41,100 lb
Rear Axle — Rated Load	14 500 kg	31,900 lb	18 700 kg	41,100 lb
<b>Total — Rated Load</b>	<b>32 370 kg</b>	<b>71,200 lb</b>	<b>42 300 kg</b>	<b>93,000 lb</b>
Front Axle — Loaded	21 600 kg	47,500 lb	24 500 kg	53,900 lb
Center Axle — Loaded	20 770 kg	45,700 lb	25 500 kg	56,100 lb
Rear Axle — Loaded	20 100 kg	44,200 lb	24 800 kg	54,500 lb
<b>Total — Loaded</b>	<b>62 470 kg</b>	<b>137,400 lb</b>	<b>74 800 kg</b>	<b>164,500 lb</b>

BODY HOIST	MCC35	MCC40
Raise Time	10 seconds	12 seconds
Lower Time	6 seconds	7 seconds

## Product Availability

The Mega MCC35 and MCC40 will be sold exclusively through Caterpillar Dealers. These products are tentatively expected to be available for order late 2008. Expected delivery is 2009.

## Product Support

Your local Cat dealership will be with you every step of the way with unsurpassed worldwide parts support, trained technicians and customer support agreements.



Mega Corp Inc.®  
All rights reserved.  
www.megacorpinc.com  
1-800-345-8889  
505-345-2661