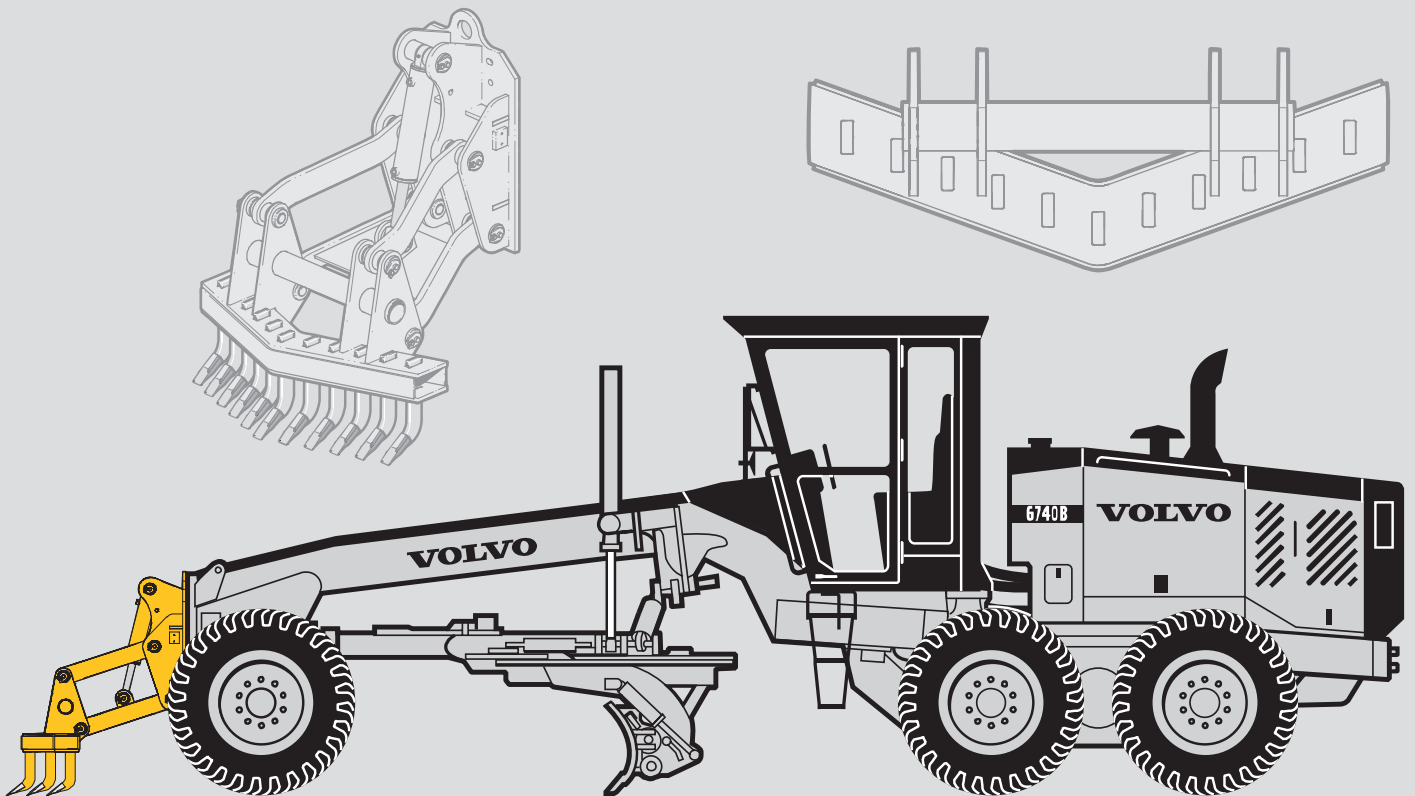


# **FRONT MOUNTED SCARIFIER**

## **ATTACHMENT**



### **Key Features:**

- Excellent visibility
- Five standard (eleven possible) shanks and points
- Four point lift group linkage provides excellent stability during operation
- Parallel action ensures even penetration of all teeth at all working depths
- V shaped design permits efficient material flow

A scarifier attachment is designed to break up compacted material, asphalt and rocky subgrade to facilitate grading.

The front mounted scarifier is mounted to the nose plate of the grader and simplifies scarifying operations against curbs or walls or near other obstacles.

## DIMENSIONS

<b>Model V005</b>	<b>G710B-G746B Only</b>
Weight.....	704 kg (1,552 lb)
Width of cut.....	1 248 mm (49")
Tooth spacing.....	120 mm (4.7")
Lift cylinder diameter.....	102 mm (4")

## ADD TO OVERALL GRADER LENGTH

Tire Size	G710B	Tire Size	G720B-G730B	Tire Size	G740B-G746B
13.00 x 24 .....	1 200 mm (47.25")	13.00 x 24 .....	1 210 mm (47.75")	13.00 x 24.....	— —
14.00 x 24 .....	1 160 mm (45.75")	14.00 x 24 .....	1 175 mm (46.25")	14.00 x 24.....	1 200 mm (47.25")
16.00 x 24 .....	— —	16.00 x 24 .....	— —	16.00 x 24.....	1 135 mm (44.75")
17.50 x 25 .....	1 160 mm (45.75")	17.50 x 25 .....	1 175 mm (46.25")	17.50 x 25.....	1 200 mm (47.25")

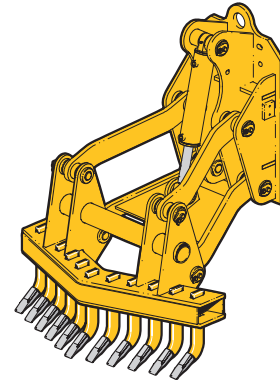
## GROUND CLEARANCE

Tire Size	Teeth Installed Top Position	Tire Size	Teeth Installed Bottom Position
13.00 x 24 .....	432 mm (17")	13.00 x 24 .....	406 mm (16")
14.00 x 24 .....	468 mm (18.4")	14.00 x 24 .....	443 mm (17.4")
16.00 x 24 .....	530 mm (21")	16.00 x 24 .....	504 mm (20")
17.50 x 25 .....	468 mm (18.4")	17.50 x 25 .....	443 mm (17.4")

## KEY FEATURES

- Number of teeth: 5 supplied, accepts up to 11
- Maximum penetration: 292 mm (11.5")
- Teeth:
  - Shank - Medium carbon steel alloy. Hardness 415 Brinell
  - Thickness 76 mm x 25 mm (3" x 1")
  - Tip - Replaceable. Hardness 495 Brinell
  - Tip size 165 mm x 44 mm (6.5" x 1.7")
- Hydraulic control: Full hydraulic control using lever on steering pedestal
- Designed by Volvo Motor Graders for durability
- Lift group will also accept the front dozer blade
- Standard paint color: Volvo Gray
- Consult your Volvo dealer for hydraulic and mounting requirements

## FRONT MOUNTED SCARIFIER



Volvo offers a complete line of attachments to increase the versatility and productivity of your grader. Volvo attachments are designed to meet the unique performance characteristics required in grader applications.

*All dimensions are approximate.*

*Your safety and the safety of those around you depends on using care and judgement when operating and servicing your grader. Do not operate the grader until you read and understand the warnings and instructions in the operator's manual. Volvo Motor Graders Limited is an ISO 9001 and 14001 registered company. [www.volvo.com](http://www.volvo.com)*

*Under our policy of continuous product development and improvement, we reserve the right to change the specifications and design without prior notice. The illustrations do not necessarily show the standard versions of the attachment or the machine.*

# VOLVO

**Volvo Construction Equipment  
North America, Inc.**

One Volvo Drive, Asheville, NC 28803-3447  
[www.volvoce.com](http://www.volvoce.com)

Ref. No. 22 3 434 1034 English  
Printed in USA 05/05 - 3,0 GMC  
Volvo, Asheville