

CASE
CONSTRUCTION

F SERIES WHEEL LOADERS

621F | 621F XT | 621F XR | 721F | 721F XT | 721F XR |
821F | 821F XR | 921F | 921F XR



Case Delivers Full-Service Solutions

EQUIPMENT | FINANCING | PARTS & SERVICE

F SERIES WHEEL LOADERS

**621F | 621F XT | 621F XR | 721F | 721F XT | 721F XR |
821F | 821F XR | 921F | 921F XR**

Productivity and performance

Get ready to experience the next generation of power, performance, efficiency, reliability and comfort. The Case F Series wheel loaders are the real deal. When it comes to productivity, the renowned Case/FPT 6.7-liter engine delivers—and still gives you better fuel economy. Whether you're loading trucks, stocking a hopper, digging at the face of an aggregate pit or supporting a road construction project, the new Case 621F, 721F, 821F and 921F wheel loaders give you the superior power and performance to tackle the job.

Impressive fuel economy

The Case F Series offers the industry's most impressive gains in fuel economy, a significant achievement for a line of wheel loaders already renowned for its fuel economy. The Case F Series wheel loaders provide a 9- to 16-percent increase in fuel economy compared to the previous E Series machines. The greatest economy gains result from the new engine configurations, featuring a free-breathing, optimized combustion process made possible by the use of selective catalytic reduction (SCR) technology.

Other factors boosting fuel economy in the F Series wheel loaders include four selectable power modes (unique to Case) that have been reformulated to save more fuel while providing higher torque rise to increase available power. Standard idle reduction modes and idle management automatically adjust to reduce fuel use. A hydraulic on-demand cooling fan and an available five-speed transmission with lock-up torque converter and open differential axles add to the F Series fuel economy advantage.

SCR technology for Tier 4

Case F Series wheel loaders use SCR technology to achieve Tier 4 Interim certification, help protect the environment and meet ever-more-stringent bid requirements. This unique Tier 4 Interim solution also helps the Case F Series deliver the improved fuel economy, power and performance your business needs for success in a very competitive environment.

Expanded capabilities for multiple applications

The F Series wheel loader family meets your application needs through a variety of new capabilities, including a whole new size-class machine—the Case 921F model—that's particularly well suited for aggregate material handling. Powertrain options include a new five-speed transmission with lock-up torque converter for exceptional acceleration and higher top speed, for faster cycles in a wide range of applications. This new transmission includes the POWERINCH™ intelligent transmission de-clutch that adds to your efficiency in truck loading and hopper charging. Heavy duty axles with automatic or manual-controlled locking front differential handle the heaviest loads and toughest underfoot conditions.

The Case Commodity King package, available on the 621F and 721F models, includes a special cooling system to handle working in extreme environments with heavy airborne debris. In addition to standard Z-bar versions, an XR (extended reach) version is available for all models, and an XT (tool carrier) version is available for the 621F and 721F models.

Superior comfort and efficiency

Case knows a comfortable, alert operator is more aware and more productive. The Case F Series wheel loaders continue the Case tradition of providing a comfortable, efficient cab. Our award-winning joystick steering allows the operator to move easily between joystick and steering wheel. An available two-lever control system for implement hydraulics boosts operator efficiency in high-production applications. Unobstructed views to the bucket, narrow sloping hood and an optional rear view camera give the F Series machines excellent visibility characteristics. And operators enjoy full climate control and an available heated cloth seat.



Exceptional serviceability

The F Series machines uphold the Case tradition of easy maintenance, including grouped, ground-level service checkpoints. Serviceability features include a mid-mounted cooling module that's easy to access and clean. A tilt-up rear hood provides easy and complete access to engine and service points. Available SmartFit™ hammerless bucket teeth save time and reduce the need for specialized equipment to install bucket teeth. Easy maintenance, exceptional serviceability—it's what you can always expect from Case.



621F



721F



821F



921F



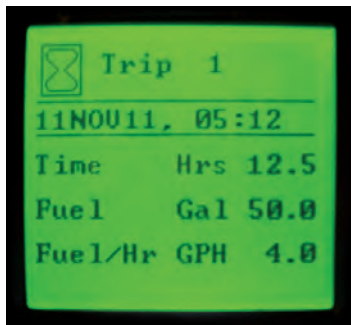
Breakthrough Fuel Economy, Power and Performance

The new F Series wheel loaders from Case provide faster acceleration, quicker cycle times and higher travel speeds while delivering as much as 20 percent better fuel economy, particularly with longer travel distances.

The Case 621F, 721F, 821F and 921F wheel loaders use proven selective catalytic reduction (SCR) technology to meet Tier 4 Interim emissions standards while also delivering increased power and improved fuel economy.

With SCR technology, Case has made what was already an exceptionally fuel-efficient line of wheel loaders even more fuel efficient. At the same time, the Case F Series engines are more powerful and responsive.

The Case 621F, 721F, 821F and 921F wheel loaders feature a 6.7-liter Tier 4 Interim-certified engine, rated at 162, 179, 211 and 242 hp (121, 133, 158 and 180 kW), respectively.



Significant fuel savings

Case F Series wheel loaders feature four easy-to-program power modes—Economy, Standard, Max and Auto—that give operators flexibility in matching engine power to their jobs.

A new optional, five-speed transmission with a lock-up torque converter, open-differential axles and advanced system programming provides up to 8 percent increase in fuel savings over a comparably equipped model with a four-speed transmission.

Solid rubber tires and heavy duty axles available



A new dual-mode shutdown feature maximizes fuel economy and monitors vital engine components. Using the fuel-saver mode, the operator can limit the time the machine will idle.

Breakthrough productivity

The new Case wheel loaders include standard limited-slip front and rear axles that provide outstanding traction in all conditions, especially in non-compacted surfaces, such as gravel. The standard four-speed transmission with manual kick-down delivers maximum traction and increased bucket penetration.

The Case 921F wheel loader, with a 4.75 yd³ (3.6 m³) bucket, launches a new size class for Case. With greater tipping load, weight and bucket breakout force relative to its payload, the 921F meets the needs of aggregate stockpiling and high production truck-loading applications. Bucket capacities are 2.75 yd³ (2.1 m³) for the 621F, 3.25 yd³ (2.5 m³) for the 721F and 4.25 yd³ (3.25 m³) for the 821F.

The award-winning Case joystick steering enables operators to seamlessly move between the joystick and steering wheel for high-production operations. Exclusive POWERINCH™ lets the operator quickly and precisely approach targets in tight areas, regardless of engine speed or ramp grade. POWERINCH™ helps maintain high RPMs to maximize hydraulic power and control.

Comfort in the cab

The cab offers an unobstructed view to both edges of the bucket or attachment, while a wide window and sloping hood provide clear vision to the rear.

A new rear view, wide-angle camera with an adjustable color monitor is available in the Case F Series. The camera option reduces blind spots and is helpful for jobs that require operating around other machines or workers.

Attachments add value

Case offers a range of attachments for the F Series wheel loaders, including pallet forks, brooms, material handling arms, buckets and weigh-load systems. The F Series buckets are available with bucket teeth or bolt-on edges. In addition to the standard Z-bar loader, Case offers XR extended-reach models and an XT tool carrier model for 621F and 721F.

SCR for Tier 4 Interim — A Solution That Pays You Back

Tier 4 Interim solution

Performance – More power and quicker power response, as the engine is configured to run at peak performance. Unlike alternative Tier 4 technology, with SCR, the engine functions at optimum temperature and combustion is not compromised. SCR supports better acceleration, faster cycle times, and easier maintenance.

Fuel economy – SCR delivers up to 12 percent better economy than Tier 3 technology and 18 percent better economy than alternative Tier 4 technology. Combined with other Case F Series features such as the five-speed lock-up transmission and auto-shutdown, you may see up to 16 percent better fuel economy results.

Ease of maintenance – You can use the same oil and fuel (including up to B7 biodiesel and normal-low sulfur fuels) with SCR technology. SCR also works with standard cooling systems, and requires fewer components to implement.

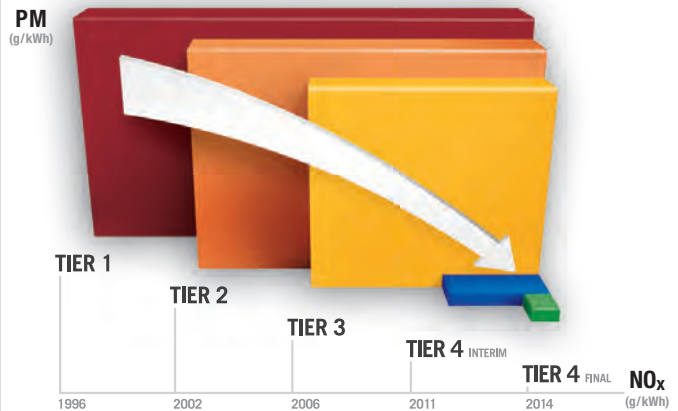
Qualification for government projects – Many government projects now require the use of Tier 4 Interim certified machines.

Customer preference – Case research has shown more customers prefer the benefits of SCR, and most are comfortable with sourcing and using the required diesel exhaust fluid (DEF). SCR is widely considered the leading technology choice for meeting Tier 4 Final requirements.

The future of the industry depends on SCR – Experts recognize SCR as the longer-term technology solution to meet more stringent emission regulations for Tier 4 Final. Case, in essence, offers tomorrow's solution today.

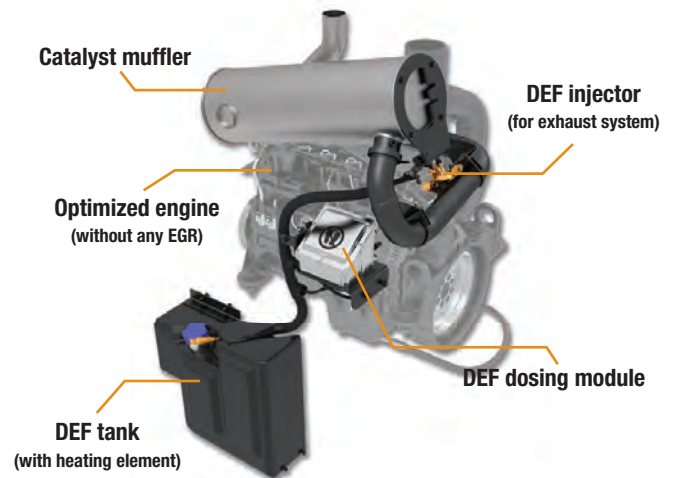
Dealer support – Case dealers are ready to fully support your Tier 4 Interim needs, including DEF supply as well as storage and delivery tanks.

Emissions regulation: permitted levels of NOx and PM



Tier 4 Interim reduces NOx by 50% and PM by 90% over Tier 3 levels for these size machines.

Case's selective catalytic reduction system (SCR)



Your Case dealer can supply diesel exhaust fluid (DEF)



DEF tank fill



275 gallon DEF tote



F SERIES WHEEL LOADERS

621F | 621F XT | 621F XR | 721F | 721F XT | 721F XR |
821F | 821F XR | 921F | 921F XR



Fuel economy

Up to 20% better fuel economy than the E Series, further fuel savings available by working in Economy power mode—still providing the strong power you expect with Case wheel loaders.



Tier 4 Interim economy—SCR

Selective catalytic reduction technology alone delivers up to a 15-percent increase in fuel economy. The choice of SCR is also best for power, maintenance and ease of operation.



Advanced instrument cluster

AIC provides the operator with comprehensive information and allows the adjustment of various operation functions without the need of a service technician.



Four power modes

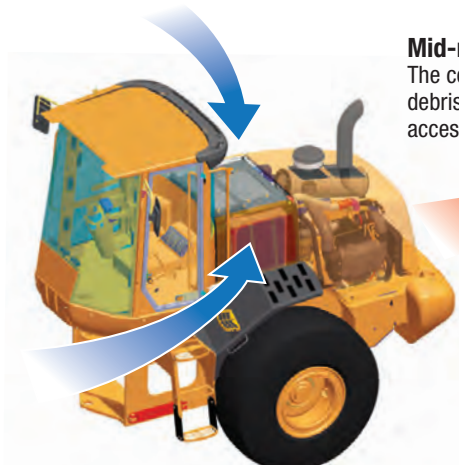
Four programmable power modes provide the ability to match engine output to each task, optimizing both power and economy. Choose modes:

- Economy—for best economy
- Standard—economy and power
- Maximum—for high productivity
- Auto—chooses mode for either economy or more power



Limited-slip axles for 621F, 721F and 821F

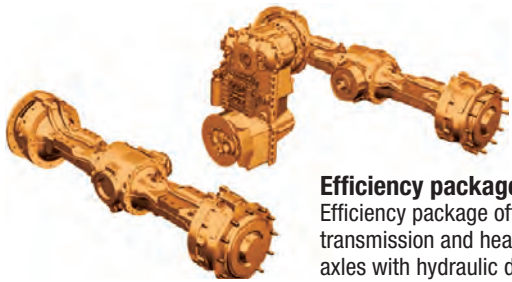
Limited-slip differentials are standard in both front and rear axles, providing outstanding traction in all conditions.



Mid-mounted cooling module

The cooling module position limits debris build up and provides easy access for routine cleaning.





Efficiency package drivetrain
Efficiency package offers five-speed lock-up transmission and heavy-duty open differential axles with hydraulic differential lock, delivering up to 8% increase in fuel savings.



Heavy duty axles
Optional heavy duty axles with hydraulically locking front differentials help reduce tire wear when working on hard surfaces, and for applications with solid or foam-filled tires.



Optional five-speed lock-up transmission for 721F, 821F, 921F
Available five-speed transmission with lock-up torque converter with computer controlled clutch modulation for reliability and superior fuel economy.



POWERINCH™—included with five-speed lock-up transmission
POWERINCH™ gives the operator more control and accuracy in tight loading areas, regardless of engine speed or grade, providing full power to loader arms and bucket cylinder.



Easy maintenance—sloping, raise-up hood
The tilt-up rear hood allows complete, ground-level access to the engine and grouped service points. The available auto-lubrication system makes maintenance even easier.



Visibility enhancements
The F Series machines offer the lowest and narrowest rear hood in the industry for enhanced visibility. Optional rear view camera adds another dimension to operator visibility.



Automatic engine shutdown
Standard engine shutdown feature allows owner to automatically limit engine idle time for up to 30% additional fuel savings. Meets requirements for an idle reduction device.



F SERIES WHEEL LOADERS

621F | 621F XT | 621F XR | 721F | 721F XT | 721F XR |
821F | 821F XR | 921F | 921F XR



Comfortable, productive operator's station

Class-leading comfort

The Case F Series cab offers an unobstructed view to both edges of the bucket or attachment, while a wide window and the narrow sloping engine cover provide excellent visibility to the rear. F Series wheel loaders are designed with the lowest and narrowest rear hood in the industry, made possible in part by the mid-mounted cooling package and SCR for Tier 4 Interim. Visibility is further enhanced by a new, wide-angle rear view camera with an adjustable color monitor that reduces blind spots for the operator.

The standard advanced instrument cluster allows operators to adjust various machine functions from within the cab without relying on a service technician. Ergonomically placed controls and an optional heated cloth seat with seven adjustment modes complete the cab improvements, ensuring that operators will stay comfortable and productive throughout the day.

Award-winning Case joystick steering gives the operator the choice of switching effortlessly between the joystick and steering wheel.



Advanced instrument cluster and keypad



Excellent front viewing area



Optional joystick steering control



Optional rear view camera



Rear view camera monitor



Optional LoadLog bucket scale

Easy maintenance and service

Case knows that the easier it is to perform routine maintenance, the more likely it will get done. A hallmark of Case equipment design is easy groundline access to daily maintenance checkpoints.

Exceptional serviceability features include an easy-access, mid-mounted cooling box module, positioned to reduce debris build-up. Also, a tilt-up rear hood provides easy and complete access to the engine and service points.

The Case F Series wheel loaders also feature grouped grease fittings with an optional auto lubrication system. New highlights include split-flange hydraulic connectors and O-ring face seals. Available SmartFit™ hammerless bucket teeth save time and reduce the need for specialized equipment to install bucket teeth.

Add up all the maintenance and service advantages of the Case F Series, and you get a wheel loader that will be more productive on the jobsite.

Case's SCR technology for Tier 4 Interim allows the use of industry-standard engine oil. Low-ash oil is not required.



Tilt-up hood



Air filter access



Cooling module access



Ecology drain ports



Remote grease points



Hydraulic tank sight gauge



Ground level fills for fuel and DEF



Jump start receptacle

F SERIES WHEEL LOADERS

621F | 621F XT | 621F XR | 721F | 721F XT | 721F XR |
821F | 821F XR | 921F | 921F XR

Easy maintenance

- Full tilt-up hood
- Mid-mounted cooling box module
- Ground-level, grouped service points
- Optional jump start receptacle
- Does not require low-ash oil

Powerful and productive

- High horsepower and torque rise
- 4 Power modes to choose from
- Tier 4 with faster throttle response

Fast and efficient

- 4 Power modes, including Economy mode
- SCR for Tier 4 Interim optimizes fuel economy
- Optional five-speed transmission with lock-up torque converter
- Optional heavy duty axles also reduce driveline friction

Reliable and durable

- Large and heavy frame and structures
- Upgraded standard axles, optional heavy duty axles
- Engine not subjected to temperature spikes from regeneration
- Does not require ultra-low sulfur fuels





Comfort and visibility

- Large cab with full-length front glass
- Narrow, sloping rear hood
- Optional rear view camera
- Optional joystick steering maintains steering wheel

Versatile

- Stability for big loads
- Best balance of top-rated specifications
- Wide range of versions, options and attachments

F SERIES WHEEL LOADERS

621F | 621F XT | 621F XR | 721F | 721F XT | 721F XR |
821F | 821F XR | 921F | 921F XR

Standard equipment

OPERATOR ENVIRONMENT

ROPS cab with heat
Pressurized air filtering
Defroster
Fully adjustable, cloth-covered mechanical suspension seat
2 in (51 mm) retractable seat belt
Single lever 2-spool loader control
Fully adjustable wrist rest
(1) Interior rearview mirror
Articulated power steering with tilt column
Steering wheel with integral steering knob
Foot throttle
Single brake pedal
F/N/R shuttle switch
Downshift button
Side window, partial/fully open
Anti-glare window strip
Wipers, rear and intermittent front
Windshield washers, front and rear
Dome light
Glove box
Storage tray behind seat
Lunch box compartment
Cup holder
Coat hook
Rubber floor mat

HYDRAULICS

Load-sensing, variable displacement hydraulic system
Single-lever, 2-spool loader control valve
Low-effort, pilot-actuated loader control
Low-effort hydraulic steering
Cushioned steering cylinders
Hydraulic driven on-demand fan
(8) Diagnostic quick couplers
Split-flange hydraulic connections (1 inch or greater)
Hydraulic oil cooler

ELECTRICAL

Alternator and voltage regulator
65 amp alternator
Electrical disconnect
(2) 700 CCA 12-volt batteries
Front and rear halogen flood lights
Tail lights and stop lights combined
(2) Front driving headlights (high/low beam)
(2) Front flood
(2) LED stop/tail lights
(2) Rear flood
Front and rear turn signal/flash
Key start/stop switch
Central fuse box, all circuits protected
Telematics plug port
Backup alarm
Horn

INSTRUMENTATION

Displays/Gauges:
Analog:
Fuel level
Engine coolant temperature
Transmission oil temperature
Hydraulic oil temperature
LCD screen:
(metric/English; multiple languages)
Hour meter
Engine speed
Travel speed
Current gear selection
FNR indication
Clock
Trip computer
Fuel consumption
Fuel level percentage
DEF (Diesel Exhaust Fluid) gauge
Oil pressure
Coolant temperature
Engine oil temperature
Transmission oil temperature
Transmission sump oil temperature
Hydraulic oil temperature
Turbocharger air temperature
Differential lock indicator*
Joystick steering indicator*
Automatic transmission indicator
De-clutch indicator
Engine mode indicator
Engine diagnostics
Transmission diagnostics
System voltage
Error reporting

INSTRUMENTATION (continued)

Indicator lights:
Low fuel
Turn signals
Four-way flashers
High beam lights
Grid heater*
Brake pressure
Master indicator
Secondary steering*
Parking brake
Audible/Visual alarms:
Caution alarm:
Parking brake
Coolant temperature
Hydraulic oil temperature
Transmission oil temperature
Air filter
Transmission filter
Hydraulic filter
Alternator
Low fuel
Critical alarm:
Engine oil pressure
Brake pressure
Steering pressure (w/aux. steering)*
Coolant temperature
Hydraulic oil temperature
Transmission oil temperature

LOADER

Z-bar loader linkage
2-spool loader control valve
Single control for lift and tilt
Positive hold float
Automatic return-to-dig
Automatic height control
Automatic return-to-travel
Brake pedal transmission disconnect
Bucket position indicator on bucket

ENGINE

Tier 4 Interim certified
Selectable work modes:
Max power
Standard power
Economy power
Auto power
Auto idle control (warm-up, normal, low-idle)
Auto engine shutdown-idle reduction
Auto engine shutdown-protection mode
Turbocharger

ENGINE (continued)

Charge air cooling
Automatic fan belt tensioner
Integral engine oil cooling
Fuel filter with water trap
Fuel cooler
Dual-element dry-type air cleaner
Hydraulic-driven on-demand cooling fan
Liquid-cooled radiator
Mid-mounted cooling module
Common rail electronic fuel injection

DRIVETRAIN

4-wheel drive
4F/3R auto/manual shift transmission
Programmable gear selection, with computer controlled proportional shifting
Torque converter
Outboard planetary axles
Limited slip differentials (except 921F)
3-piece rims
Onboard diagnostics
Transmission oil cooler
Brake pedal transmission disconnect
Hydraulic wet disc brakes
Spring-applied hydraulic release parking brake
Separate front and rear brake systems
Oscillating rear axle with greasable trunnion

OTHER

Electric raise-up hood
Front and rear fenders, partial coverage
Standard counterweight
Drawbar hitch
Articulation locking bar
Lift arm locking bar
Lift and tie-down points – front/rear
Grouped remote drain ports:
Engine oil
Engine coolant
Hydraulic oil

* When equipped with option.

Optional equipment

OPERATOR ENVIRONMENT

Cab air conditioning with heater
 Vinyl-covered mechanical suspension seat
 Cloth-covered air-suspension seat
 Cloth-covered air-suspension seat, heated
 3 in (76 mm) retractable seat belt
 Sound Shield
 noise suppression package
 Rear view camera
 with accessory mounting bar
 In-cab accessory mounting bar
 AM/FM stereo radio with speakers
 Radio-ready:
 12- to 24-volt power converter, 20 amp
 (2) 12-volt auxiliary power outlets
 Speakers
 Radio bracket
 Antenna
 Wiring harness with fuse
 Operator convenience package
 RH steps and platform
 Rotating beacon
 Second brake pedal
 Open ROPS canopy

OPERATOR ENVIRONMENT (continued)

Joystick steering
 External rearview mirrors
 External rearview mirrors, heated
 Extra front-facing work lights

DRIVETRAIN

5F/3R auto/manual shift transmission, lock-up torque converter with POWERINCH™
 Heavy duty axles with auto-locking front differential and rear conventional differential (921F std. with HD axles, conventional front differential)
 Cold weather package:
 Block heater
 Heavy-duty (2) 950 CCA batteries (900 CCA for 621F)
 Fuel warmer
 Hydraulic oil cooler bypass
 Low temperature hydraulic oil
 Fast-warm hydraulic heat load valve
 Engine air-intake grid heater
 Full-view or ejector-type pre-cleaner
 Commodity King package with heavy debris cooling system (621F, 721F)
 Remote jump start receptacle

HYDRAULICS

2-lever loader controls
 3- or 4-spool control valves
 Auxiliary hydraulic lines
 Ride Control™
 Secondary steering
 Variable-speed hydraulic reversing fan

LOADER

XR extended reach lift arms
 XT tool carrier loader linkage
 Attachment auxiliary hydraulics

WHEELS AND TIRES

L2 bias tires
 L2 radial tires
 L3 bias tires
 L3 radial tires
 Michelin SnoPlus Radials
 Bridgestone Snow Wedge Radials
 Solid rubber tires (621F, 721F)
 Spare wheels and tires
 Axle oscillation stops
 Wheel chocks

WORK TOOL ATTACHMENTS

General purpose buckets
 Light material buckets
 Grapple buckets (621F, 721F only)
 Forks
 Brooms
 Material handling arms
 Quick couplers, JRB or ACS compatible

OTHER

Full coverage fenders
 Belly pan
 Side guards for rear frame
 Tool box – ground level access
 Extra counterweight (included with XT, XR)
 Fire extinguisher
 License plate bracket
 12.4 mph (20 kph) max speed control
 Special paint



Commodity King (Feedlot Special)

The 621F and 721F models are available as the Commodity King version, an agriculture-specific version, like the legendary Case Feedlot Special it replaces. It has a package of features such as an upgraded cooling system, guarding and Syclone air pre-cleaner to handle working in very dusty, debris-filled environments. Along with Case's mid-mounted cooling box module, these features further minimize maintenance and maximize uptime. New attachments such as grapple buckets, light material buckets, pallet forks and couplers maximize versatility to get more work done with one machine.



XT integrated tool carrier

Integrated tool carrier versions are available for 621F and 721F. This offers dual-tilt cylinders and parallel loader linkage for best visibility to the attachment, high-tilt control throughout the lift cycle, and level lift capability. It also includes an integrated quick coupler (choose JRB or ACS compatible) for extra versatility. The extra counterweight is part of the XT version to maintain operating XT capacities. The XT is preferred for working with attachments such as forks and material handling arms.



Waste handling arrangements

The F Series models are perfect for waste handling applications such as transfer stations and landfills. Thanks to the use of SCR technology for Tier 4 Interim, the cooling systems are compact and efficient, without the need for a diesel particulate filter and the high heat and potential downtime of the regeneration cycle. Further, the low emissions levels of Tier 4 Interim make them more environmentally friendly and a great choice for working in waste transfer stations. Options available for waste handling arrangements include powertrain belly guard and frame side cover guards, cab guarding, reversing fan or high-debris cooling package, heavy duty axles and solid tires.

F SERIES WHEEL LOADERS

621F | 621F XT | 621F XR | 721F | 721F XT | 721F XR |
821F | 821F XR | 921F | 921F XR

Increase productivity with attachments

Case offers a range of attachments for the 621F, 721F, 821F and 921F wheel loaders to increase their utility across a wide variety of applications. All four machines can be ordered with a standard Z-bar loader linkage or an XR long reach arm configuration. The 621F and 721F can also be configured with XT parallel lift arms for use as a tool carrier.

Pallet forks, material handling arms, brooms and a full range of buckets are available, along with weigh load systems for production applications. The 621F and 721F are also available as a Commodity King version, with upgrades to increase uptime while working in applications with large amounts of airborne debris.

In all, more than two dozen loader attachments are available for Case F Series wheel loaders.



SmartFit™ teeth

A patented, new tooth system featuring hammerless fastener technology

The SmartFit™ design improves digging performance by combining a strong, square adapter nose for extra strength with heavier, longer-lasting, self-sharpening teeth. Reusable, hammerless fasteners simplify tooth installation and replacement.



Light material bucket



4-1 bucket



Material handling arm



Broom



JRB or ACS compatible couplers



Forks

You can count on Case

You can count on Case and your Case dealer for full-service solutions—productive equipment, expert advice, flexible financing, genuine Case parts and fast service. We're here to provide you with the ultimate ownership experience.

Case pride

You can take pride in the Case name on your machine. It's backed by more than a century of productivity and performance. Case and your Case dealer are here for you, not only when you buy the machine, but also after you put 1,000 or 10,000 hours on it.

A rich, proud history

Case Construction Equipment's heritage spans over 170 years. Growing from J.I. Case's innovations with steam-powered machinery in the late 1800s, Case developed road-building equipment that helped create early 20th century streets and highways across the world. By 1912, Case was well on its way to establishing itself as a full-line equipment manufacturer. The company continued to expand its construction equipment business over the years.

Celebrating a tradition of innovation

In 1957, Case produced the world's first integrated loader/backhoe made and warranted by one manufacturer. Over the decades and into the 21st century, Case has continued to develop a long line of industry firsts and has taken a leadership role in pioneering new products and solutions. Today, Case produces 15 lines of equipment and more than 90 models to meet your toughest construction challenges. Supported by manufacturing and sales in more than 150 countries, Case serves the needs of our customers worldwide.

The Case loader/backhoe history has included a number of important "firsts"—such as the Case-patented Extendahoe extendible dipper stick, return-to-dig and return-to-travel functionality, Ride Control™, side lighting and the Case trademark over-center boom design—that evolved the loader/backhoe into an indispensably versatile fixture in the construction equipment industry.

Coast-to-coast customer support

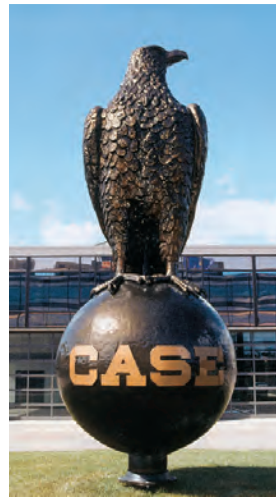
In North America, Case equipment is sold and serviced by more than 375 dealer locations. No matter where you work, we're here to support and protect your investment and exceed your expectations.

To locate a Case dealer or learn more about Case equipment or customer service, go to www.casece.com or call **1-866-54CASE6**. For flexible financing options, dependable parts and fast service, your Case dealer is here to meet your needs.

It all adds up. You can count on Case.

Case Delivers Full-Service Solutions

EQUIPMENT | FINANCING | PARTS & SERVICE



F SERIES WHEEL LOADERS

	621F	721F	821F	921F
Bucket (typical size)	2.75 yd ³ (2.10 m ³)	3.25 yd ³ (2.5 m ³)	4.25 yd ³ (3.2 m ³)	4.75 yd ³ (3.6 m ³)
Hinge pin height	150.8 in (3831 mm)	156.7 in (3979 mm)	162.3 in (4123 mm)	162.1 in (4118 mm)
Dump height @ 45°	112.1 in (2847 mm)	115.3 in (2930 mm)	117.4 in (2983 mm)	114.4 in (2906 mm)
Tip load, full turn ISO	19,560 lb (8872 kg)	23,213 lb (10 529 kg)	27,225 lb (12 349 kg)	31,406 lb (14 245 kg)
Operating load ISO	9,780 lb (4436 kg)	11,606 lb (5265 kg)	13,613 lb (6175 kg)	15,703 lb (7123 kg)
Lift capacity at ground	24,745 lb (11 224 kg)	29,689 lb (13 467 kg)	39,931 lb (18 112 kg)	46,622 lb (21 148 kg)
Breakout force	25,426 lb (11 533 kg)	31,382 lb (14 235 kg)	35,338 lb (16 029 kg)	37,552 lb (17 034 kg)
Hydraulic flow	45.2 gpm (171 L/min)	54.2 gpm (206 L/min)	63.2 gpm (240 L/min)	74.2 gpm (282 L/min)
Hydraulic pressure	3625 psi (25 000 kPa)	3625 psi (25 000 kPa)	3625 psi (25 000 kPa)	3625 psi (25 000 kPa)
Engine model	Case / FPT F4HFE613Z	Case / FPT F4HFE613Y	Case / FPT F4HFE613X	Case / FPT F4HFE6131
Engine configuration	6-cylinder, water cooled			
Engine displacement	411 in ³ (6.7 L)			
Max engine horsepower	162 hp (121 kW)	179 hp (133 kW)	211 hp (158 kW)	242 hp (180 kW)
Max engine torque, net	510 lb-ft (692 N-m)	674 lb-ft (914 N-m)	845 lb-ft (1145 N-m)	930 lb-ft (1261 N-m)
Torque rise	33%	37%	47%	49%
Tier 4 Solution	SCR exhaust after-treatment			
Operating weight	26,712 lb (12 116 kg)	31,510 lb (14 293 kg)	38,875 lb (17 633 kg)	43,778 lb (19 857 kg)
Width over bucket	102.4 in (2602 mm)	106.3 in (2700 mm)	119.3 in (3030 mm)	119.3 in (3030 mm)
Turning radius – outside	206.5 in (5245 mm)	226.4 in (5750 mm)	237.5 in (6.03 m)	237.5 in (6.03 m)
Length with bucket	288.0 in (7315 mm)	301.1 in (7648 mm)	309.4 in (7859 mm)	314.0 in (7976 mm)
Height to top of cab	133.7 in (3395 mm)	133.3 in (3385 mm)	135.8 in (3450 mm)	135.8 in (3450 mm)
Tire size	20.5 x 25	20.5 x 25	23.5 x 25	23.5 x 25
Travel speed*	24.0 mph (38.6 kph)	25.0 mph (40.0 kph)*	25.0 mph (40.0 kph)*	25.0 mph (40.0 kph)*
Fuel tank capacity	65 gal (246 L)	65 gal (246 L)	76 gal (288 L)	76 gal (288 L)
Fuel requirement	Low sulfur diesel (does not require ultra-low sulfur diesel fuel)			
Biodiesel fuel rating	B7 biodiesel approved			
Engine oil requirement	Does not require low-ash oil			

* When equipped with optional five-speed transmission with lock-up torque converter.

NOTE: All engines meet current EPA emission regulations.

NOTE: All specifications are stated in accordance with SAE standards or recommended practices, where applicable.

NOTE: Fuel economy statements reflect results as tested. Actual fuel economy and performance may vary according to application and worksite conditions.

IMPORTANT: Case Construction Equipment Inc. reserves the right to change these specifications without notice and without incurring any obligation relating to such change. Availability of some models and equipment builds vary according to the country in which the equipment is used. The illustrations and text may include optional equipment and accessories and may not include all standard equipment. Your Case dealer/distributor will be able to give you details of the products and their specifications available in your area.

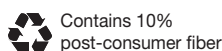


Always read the operator's manual before operating any equipment. Inspect equipment before using it and be sure it is operating properly. Follow the product safety signs and use any safety features provided.

©2012 CNH America LLC. All rights reserved. Case is a registered trademark of CNH America LLC. Any trademarks referred to herein, in association with goods and/or services of companies other than CNH America LLC, are the property of those respective companies. Printed in U.S.A.

Form No. CCE201203FSeriesWL

Replaces Form No. CCE201012FSeriesPrelim



Case construction equipment is biodiesel friendly.



621F



721F



821F



921F



Looking for product specs, customer testimonials, competitive comparisons, finance offers and more? Visit us at www.casece.com or call 866-54CASE6