

K-SERIES BACKHOES

4.34–5.44-m (14 ft. 3 in.–17 ft. 10 in.) digging depth



JOHN DEERE



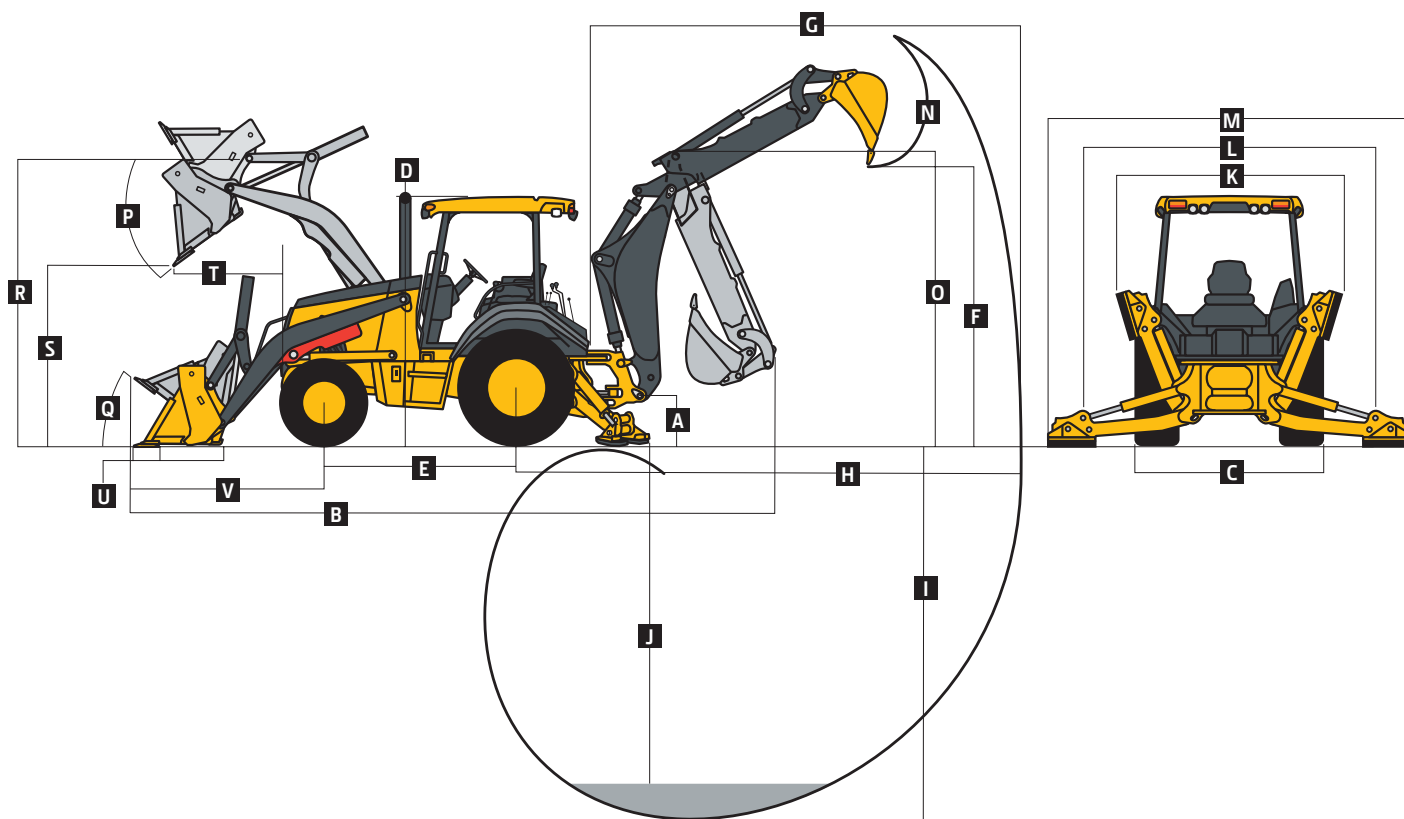
310K

Engine		310K		
Manufacturer and Model		John Deere PowerTech™ E 4045HT054 turbocharged		
Non-Road Emissions Standard		EPA Tier 3/EU Stage IIIA		
Displacement		4.5 L (276 cu. in.)		
Net Peak Power (ISO 9249)		65 kW (87 hp) at 2,000 rpm		
Net Peak Torque (ISO 9249)		374 Nm (275 lb.-ft.) at 1,300 rpm		
Net Torque Rise		43%		
Lubrication		Pressure system with spin-on filter and cooler		
Air Cleaner		Dual-stage dry type with safety element and evacuator valve		
Cooling				
Fan Type		Suction type		
Engine Coolant Rating		−40 deg. C (−40 deg. F)		
Engine Oil Cooler		Oil to water		
Powertrain				
Transmission		4 speed, helical-cut gears, full PowerShift™ transmission with hydraulic reverser standard; electric clutch cutoff on loader lever		
Torque Converter		Single stage, dual phase with 2.63:1 stall ratio, 280 mm (11 in.)		
Maximum Travel Speeds with Standard Engine, Measured with 19.5L-24 Rear Tires		Forward	Reverse	
Gear 1		5.6 km/h (3.5 mph)	7.0 km/h (4.4 mph)	
Gear 2		10.2 km/h (6.3 mph)	12.9 km/h (8.0 mph)	
Gear 3		20.8 km/h (12.9 mph)	—	
Gear 4		33.4 km/h (20.7 mph)	—	
Axles				
Axle Oscillation, Stop to Stop, Front Axle		22 deg.		
Axle Ratings		Non-Powered Front	Mechanical-Front-Wheel Drive (MFWD)	Rear
Static		18 000 kg (39,683 lb.)	12 000 kg (26,455 lb.)	13 000 kg (28,660 lb.)
Dynamic		7200 kg (15,873 lb.)	6000 kg (13,228 lb.)	7000 kg (15,432 lb.)
Ultimate		32 950 kg (72,642 lb.)	28 200 kg (62,170 lb.)	30 600 kg (67,461 lb.)
Differentials				
MFWD Axle		Open standard; automatic, limited-slip traction control optional		
Rear Axle		Electric, foot actuated, 100% hydraulic locking		
Steering (ISO 5010)		Hydrostatic power steering and emergency steering		
Axle		Non-Powered Front	MFWD	
Curb-Turning Radius				
With Brakes		3.44 m (11 ft. 4 in.)	3.58 m (11 ft. 9 in.)	
Without Brakes		3.94 m (12 ft. 11 in.)	4.08 m (13 ft. 5 in.)	
Bucket Clearance Circle				
With Brakes		9.89 m (32 ft. 5 in.)	10.11 m (33 ft. 2 in.)	
Without Brakes		10.76 m (35 ft. 4 in.)	11.05 m (36 ft. 3 in.)	
Steering Wheel Turns (lock to lock)		3.2	2.7	
Final Drive, Mechanical-Front Wheel and Rear Axle		Heavy duty, outboard planetary final drives distribute shock loads over 3 gears		
Brakes (ISO 3450)				
Service		Power assisted, hydraulic wet disc, mounted inboard, self-adjusting and self-equalizing		
Parking		Spring applied, hydraulically released, wet, multi-disc, independent of service brakes with electric switch control		
Hydraulics				
Main Pump		Open center, single gear		
Pump Flow at 2,200 rpm				
Backhoe		106 L/m (28 gpm)		
Loader		106 L/m (28 gpm)		
System Relief Pressure				
Backhoe		24 993 kPa (3,625 psi)		
Loader		22 063 kPa (3,200 psi)		



Hydraulics (continued)		310K	
Controls			
Backhoe	2-lever manual standard; pilot controls with pattern select and manual and/or electric auxiliary functions optional		
Loader	Single-lever control with electric clutch cutoff switch standard; manual auxiliary function (2nd lever) optional		
Cylinders			
Type	Heat-treated, chrome-plated, polished rods; hardened steel (replaceable bushings) pivot pins		
	Bore	Rod Diameter	Stroke
Loader Boom (2)	80 mm (3.15 in.)	50 mm (1.97 in.)	790 mm (31.10 in.)
Loader Bucket (1)	90 mm (3.54 in.)	50 mm (1.97 in.)	744 mm (29.29 in.)
Backhoe Boom (1)	110 mm (4.33 in.)	56 mm (2.20 in.)	821 mm (32.32 in.)
Backhoe Crowd (1)	110 mm (4.33 in.)	63 mm (2.48 in.)	553 mm (21.77 in.)
Backhoe Bucket (1)	80 mm (3.15 in.)	50 mm (1.97 in.)	892 mm (35.12 in.)
Backhoe Swing (2)	80 mm (3.15 in.)	45 mm (1.77 in.)	310 mm (12.20 in.)
Backhoe Extendable Dipperstick (1)	63 mm (2.48 in.)	32 mm (1.26 in.)	1062 mm (41.81 in.)
Backhoe Stabilizer (2)	80 mm (3.15 in.)	50 mm (1.97 in.)	500 mm (19.69 in.)
Non-Powered Axle (1)	70 mm (2.76 in.)	42 mm (1.65 in.)	213 mm (8.39 in.)
MFWD (1)	67 mm (2.64 in.)	42 mm (1.65 in.)	210 mm (8.27 in.)
Electrical			
Voltage	12 volt		
Alternator Rating	90 amp		
Lights	10 halogen: 4 front, 4 rear, and 2 side docking (32,500 candlepower each); turn signals and flashers: 2 front and 2 rear; stop and taillights; and 2 rear reflectors		
Operator Station			
Type (SAE J1040)	Canopy, isolation mounted, ROPS/FOPS, left/right access, with molded roof		
Tires/Wheels			
	Front	Rear	
Non-Powered Front Axle	11L-16 F-3 (12)	19.5L-24 R-4 (10)	
	11L-16 F-3 (12)	16.9-28 R-4 (10)	
MFWD	12-16.5 NHS (8)	19.5L-24 R-4 (10)	
	305/70D16.5 NHS (10)	19.5L-24 R-4 (10)	
	12.5/80-18 I-3 (12)	19.5L-24 R-4 (10)	
	12.5/80-18 I-3 (12)	21L-24 R-4 (12)	
Serviceability			
Hydraulic Oil Filter, Spin-On Enclosed Replaceable Element	6-micron filtration; 1,000 break-in/service hours		
Refill Capacities			
Cooling System	32.9 L (34.8 qt.)		
Rear Axle	18 L (19 qt.)		
Engine Oil (including vertical spin-on filter)	13 L (13.7 qt.)		
Torque Converter and Transmission	15.1 L (16 qt.)		
Fuel Tank (with ground-level fueling)	155.2 L (41 gal.)		
Hydraulic System	89.3 L (23.6 gal.)		
Hydraulic Reservoir	37.1 L (9.8 gal.)		
MFWD Housing			
Axle	6.5 L (6.9 qt.)		
Planetary (each)	0.9 L (1 qt.)		
Operating Weights			
With Full Fuel Tank, 79-kg (175 lb.) Operator, and Standard Equipment	6347 kg (13,993 lb.)		
Typical with Cab, MFWD, Extendable Dipperstick, and 454-kg (1,000 lb.) Counterweight	7385 kg (16,281 lb.)		
Adjustments to Operating Weights with Optional Components			
Cab	263 kg (580 lb.)		
MFWD with Tires	168 kg (370 lb.)		
Extendable Dipperstick	200 kg (440 lb.)		
Front Loader Coupler	286 kg (630 lb.)		
Backhoe Bucket Coupler	59 kg (130 lb.)		

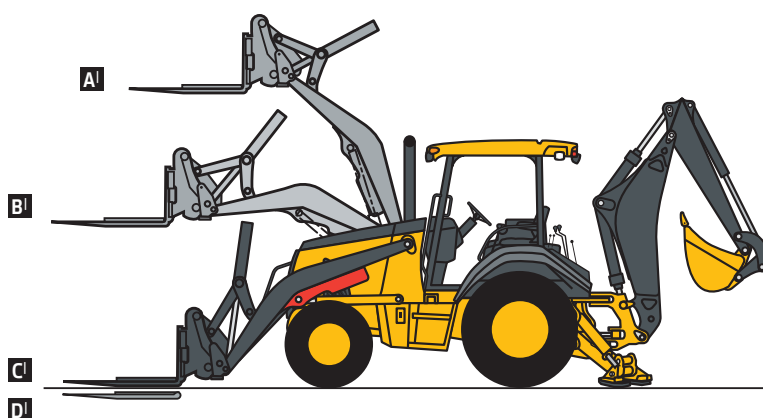
Overall Dimensions		310K
A	Ground Clearance, Minimum	305 mm (12 in.)
B	Overall Length, Transport	7.09 m (23 ft. 3 in.)
C	Width Over Tires	2.18 m (7 ft. 2 in.)
D	Height to Top of ROPS/Cab	2.74 m (9 ft. 0 in.)
E	Length from Axle to Axle	
	Non-Powered Front Axle	2.11 m (6 ft. 11 in.)
	MFWD Axle	2.14 m (7 ft. 0 in.)



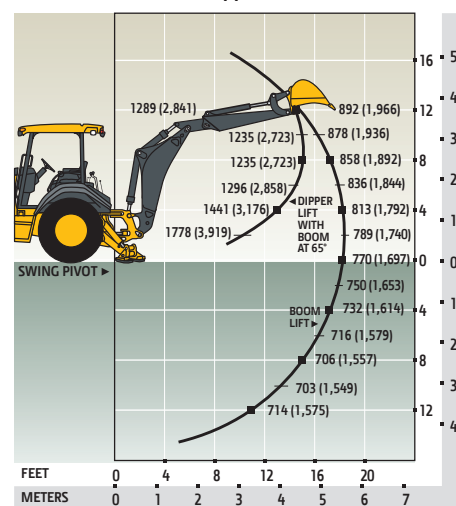
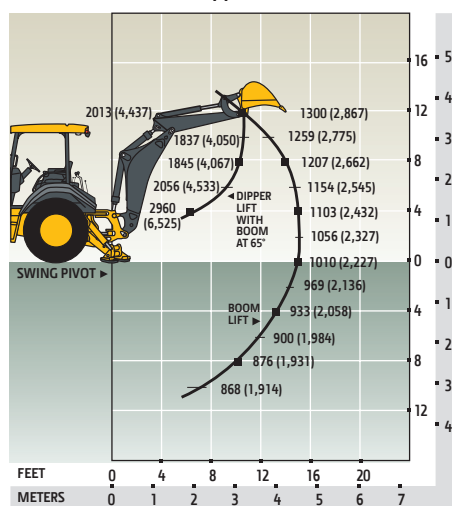
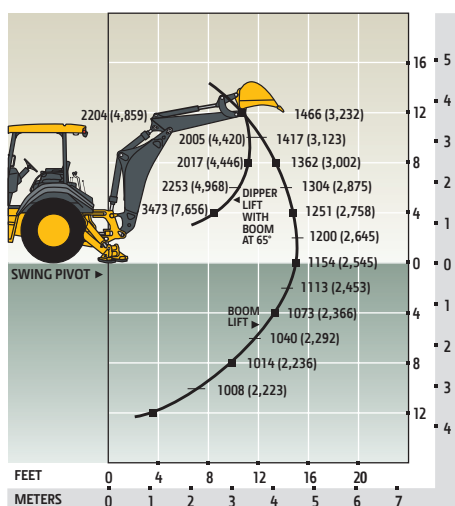
Backhoe Dimensions/Performance		310K		
Backhoe specifications are with 610-mm x 0.18-m ³ (24 in. x 6.5 cu. ft.) bucket				
Bucket Range		305–762 mm (12–30 in.)		
Digging Force				
Bucket Cylinder		49.4 kN (11,106 lb.)		
Crowd Cylinder		31.2 kN (7,006 lb.)		
Swing Arc		180 deg.		
Operator Control		2 levers		
Leveling Angle		14 deg.		
Stabilizer Angle Rearward		18 deg.		
		With Optional Extendable Dipperstick		
		With Standard Backhoe	Retracted	Extended
F	Loading Height, Truck Loading Position	3.33 m (10 ft. 11 in.)	3.38 m (11 ft. 1 in.)	4.24 m (13 ft. 11 in.)
G	Reach from Center of Swing Pivot	5.44 m (17 ft. 10 in.)	5.51 m (18 ft. 1 in.)	6.53 m (21 ft. 5 in.)
H	Reach from Center of Rear Axle	6.50 m (21 ft. 4 in.)	6.58 m (21 ft. 7 in.)	7.59 m (24 ft. 11 in.)
I	Digging Depth (SAE maximum)	4.34 m (14 ft. 3 in.)	4.39 m (14 ft. 5 in.)	5.46 m (17 ft. 11 in.)
J	Digging Depth (SAE)			
	610-mm (2 ft.) Flat Bottom	4.32 m (14 ft. 2 in.)	4.37 m (14 ft. 4 in.)	5.44 m (17 ft. 10 in.)
	2440-mm (8 ft.) Flat Bottom	3.96 m (13 ft. 0 in.)	4.06 m (13 ft. 4 in.)	5.18 m (17 ft. 0 in.)
K	Stabilizer Width, Transport	2.18 m (7 ft. 2 in.)	2.18 m (7 ft. 2 in.)	2.18 m (7 ft. 2 in.)
L	Stabilizer Spread, Operating	3.10 m (10 ft. 2 in.)	3.10 m (10 ft. 2 in.)	3.10 m (10 ft. 2 in.)
M	Stabilizer Overall Width, Operating	3.53 m (11 ft. 7 in.)	3.53 m (11 ft. 7 in.)	3.53 m (11 ft. 7 in.)
N	Bucket Rotation	190 deg.	190 deg.	190 deg.
O	Transport Height	3.43 m (11 ft. 3 in.)	3.40 m (11 ft. 2 in.)	3.40 m (11 ft. 2 in.)

Loader Dimensions/Performance		310K			
P	Bucket Dump Angle, Maximum	45 deg.			
Q	Rollback Angle at Ground Level	40 deg.			
		<i>Heavy-duty</i>	<i>Heavy-duty</i>	<i>Heavy-duty long lip</i>	<i>Multipurpose</i>
	Bucket Capacity	0.77 m ³ (1.00 cu. yd.)	0.86 m ³ (1.12 cu. yd.)	0.96 m ³ (1.25 cu. yd.)	0.96 m ³ (1.25 cu. yd.)
	Width	2184 mm (86 in.)	2184 mm (86 in.)	2184 mm (86 in.)	2184 mm (86 in.)
	Weight	363 kg (800 lb.)	390 kg (860 lb.)	405 kg (892 lb.)	794 kg (1,750 lb.)
	Breakout Force	41.6 kN (9,350 lb.)	42.3 kN (9,500 lb.)	39.9 kN (8,975 lb.)	36.4 kN (8,175 lb.)
	Lift Capacity, Full Height	2994 kg (6,600 lb.)	3073 kg (6,775 lb.)	2846 kg (6,275 lb.)	2280 kg (5,028 lb.)
R	Height to Bucket Hinge Pin, Maximum	3.38 m (11 ft. 1 in.)	3.38 m (11 ft. 1 in.)	3.38 m (11 ft. 1 in.)	3.38 m (11 ft. 1 in.)
S	Dump Clearance, Bucket at 45 deg.	2.69 m (8 ft. 10 in.)	2.69 m (8 ft. 10 in.)	2.48 m (8 ft. 2 in.)	2.59 m (8 ft. 6 in.)
T	Reach at Full Height, Bucket at 45 deg.	785 mm (30.9 in.)	767 mm (30.2 in.)	809 mm (31.9 in.)	818 mm (32.2 in.)
U	Digging Depth Below Ground, Bucket Level	160 mm (6.3 in.)	175 mm (6.9 in.)	147 mm (5.8 in.)	197 mm (7.8 in.)
V	Length from Front Axle Centerline to Bucket Cutting Edge	2.03 m (6 ft. 8 in.)	2.03 m (6 ft. 8 in.)	2.18 m (7 ft. 2 in.)	2.20 m (7 ft. 3 in.)

Lift Capacity with Quick-Coupler/Forks		310K Backhoe with Standard Dipperstick	
Hydraulic Capacity		<i>1219-mm (48 in.) Tines</i>	<i>1524-mm (60 in.) Tines</i>
A¹	Maximum Height	1746 kg (3,850 lb.)	1556 kg (3,430 lb.)
B¹	Maximum Reach	2688 kg (5,925 lb.)	2467 kg (5,438 lb.)
C¹	At Ground Line	3493 kg (7,700 lb.)	3269 kg (7,207 lb.)
D¹	Below Ground Line	262 mm (10.3 in.)	262 mm (10.3 in.)



Lift capacities are over-end values in kg (lb.) according to SAE J31. Figures listed are 87% of the maximum lift force available. Base vehicle includes counterweight.
310K Backhoe with Standard Dipperstick **310K Backhoe with 1.07-m (3 ft. 6 in.) Extendable Dipperstick, Retracted** **310K Backhoe with 1.07-m (3 ft. 6 in.) Extendable Dipperstick, Extended**



310SK

Engine		310SK		
Manufacturer and Model		John Deere PowerTech™ E 4045HT054 turbocharged		
Non-Road Emissions Standard		EPA Tier 3/EU Stage IIIA		
Displacement		4.5 L (276 cu. in.)		
Net Peak Power (ISO 9249)		71 kW (95 hp) at 1,900 rpm		
Net Peak Torque (ISO 9249)		399 Nm (294 lb.-ft.) at 1,300 rpm		
Net Torque Rise		43%		
Lubrication		Pressure system with spin-on filter and cooler		
Air Cleaner		Dual-stage dry type with safety element and evacuator valve		
Cooling				
Fan Type		Suction type		
Engine Coolant Rating		−40 deg. C (−40 deg. F)		
Engine Oil Cooler		Oil to water		
Powertrain				
Transmission		5 speed, helical-cut gears, full PowerShift™ transmission with hydraulic reverser standard; electric clutch cutoff on loader lever		
Torque Converter		Single stage, dual phase with 2.63:1 stall ratio, 280 mm (11 in.)		
Maximum Travel Speeds with Standard Engine, Measured with 19.5L-24 Rear Tires		Forward	Reverse	
Gear 1		5.6 km/h (3.5 mph)	7.0 km/h (4.4 mph)	
Gear 2		10.2 km/h (6.3 mph)	12.8 km/h (8.0 mph)	
Gear 3		20.8 km/h (12.9 mph)	20.5 km/h (12.8 mph)	
Gear 4		33.1 km/h (20.6 mph)	—	
Gear 5		40.0 km/h (25.0 mph)	—	
Axles				
Axle Oscillation, Stop to Stop, Front Axle		22 deg.		
Axle Ratings		Non-Powered Front	Mechanical-Front-Wheel Drive (MFWD)	Rear
Static		18 000 kg (39,683 lb.)	12 000 kg (26,455 lb.)	13 000 kg (28,660 lb.)
Dynamic		7200 kg (15,873 lb.)	6000 kg (13,228 lb.)	7000 kg (15,432 lb.)
Ultimate		32 950 kg (72,642 lb.)	28 200 kg (62,170 lb.)	30 600 kg (67,461 lb.)
Differentials				
MFWD Axle		Automatic, limited-slip traction control		
Rear Axle		Electric, foot-actuated, 100% hydraulic locking		
Steering (ISO 5010)		Hydrostatic power steering and emergency steering		
Axle		Non-Powered Front	MFWD	
Curb-Turning Radius				
With Brakes		3.44 m (11 ft. 4 in.)	3.58 m (11 ft. 9 in.)	
Without Brakes		3.94 m (12 ft. 11 in.)	4.08 m (13 ft. 5 in.)	
Bucket Clearance Circle				
With Brakes		9.89 m (32 ft. 5 in.)	10.11 m (33 ft. 2 in.)	
Without Brakes		10.76 m (35 ft. 4 in.)	11.05 m (36 ft. 3 in.)	
Steering Wheel Turns (lock to lock)		3.2	2.7	
Final Drive, Mechanical-Front Wheel and Rear Axle		Heavy duty, outboard planetary final drives distribute shock loads over 3 gears		
Brakes (ISO 3450)				
Service		Power assisted, hydraulic wet disc, mounted inboard, self-adjusting and self-equalizing		
Parking		Spring applied, hydraulically released, wet, multi-disc, independent of service brakes with electric switch control		
Hydraulics				
Main Pump		Open center, gear type, tandem with unloader		
Pump Flow at 2,200 rpm				
Backhoe		136 L/m (36 gpm)		
Loader		106 L/m (28 gpm)		
System Relief Pressure				
Backhoe		24 993 kPa (3,625 psi)		
Loader		24 993 kPa (3,625 psi)		

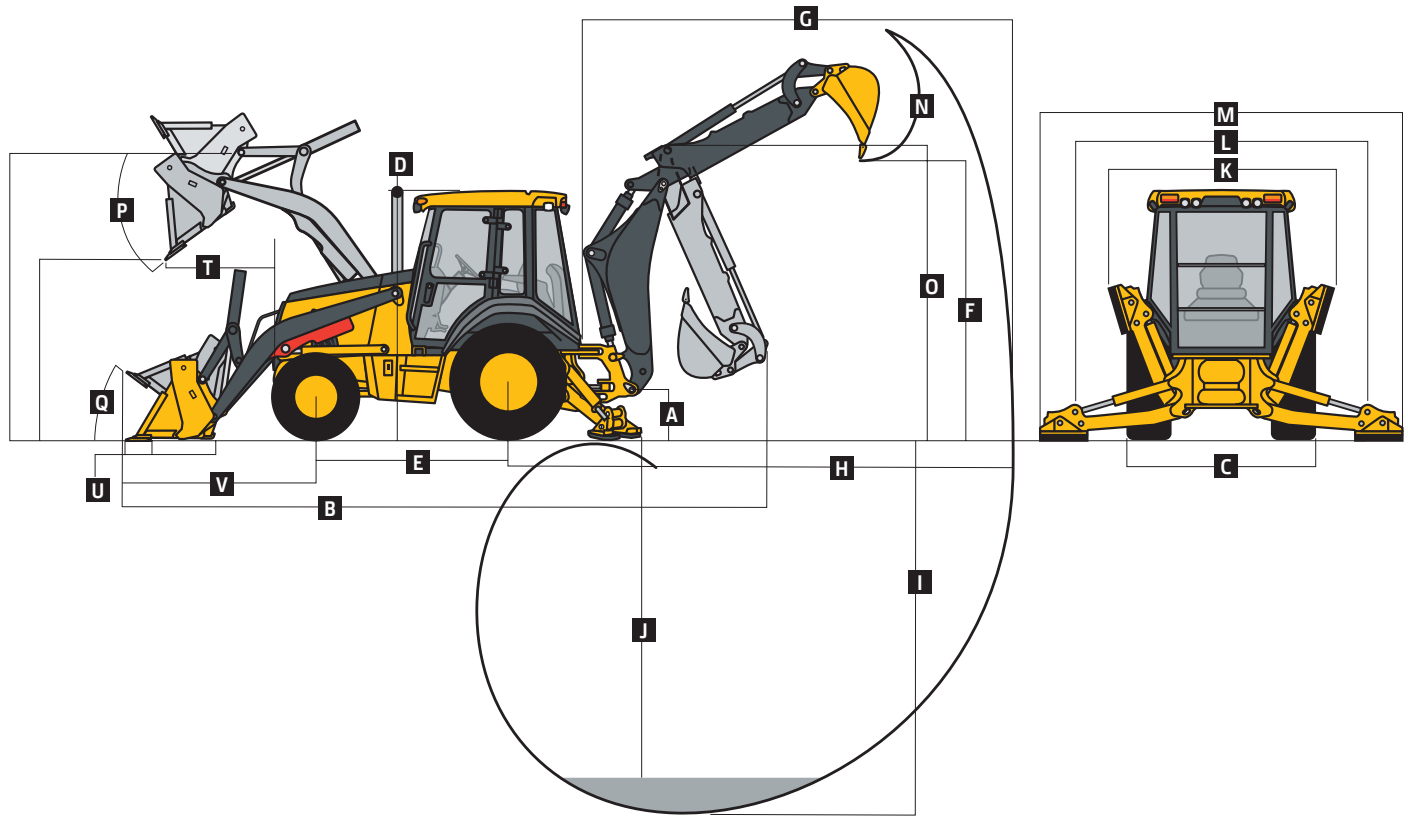


Hydraulics (continued)		310SK	
Controls (continued)			
Backhoe		2-lever manual standard; pilot controls with pattern select and manual and/or electric auxiliary functions optional	
Loader		Single-lever control with electric clutch cutoff switch standard; single-lever control with electric clutch cutoff switch, electrohydraulic (EH) proportional auxiliary roller, and MWFD (on/off/momentary) with auxiliary hydraulics optional	
Cylinders			
Type		Heat-treated, chrome-plated, polished rods; hardened steel (replaceable bushings) pivot pins	
		Bore	Rod Diameter
		Stroke	
Loader Boom (2)		80 mm (3.15 in.)	50 mm (1.97 in.)
Loader Bucket (1)		90 mm (3.54 in.)	50 mm (1.97 in.)
Backhoe Boom (1)		120 mm (4.72 in.)	56 mm (2.20 in.)
Backhoe Crowd (1)		115 mm (4.53 in.)	63 mm (2.48 in.)
Backhoe Bucket (1)		90 mm (3.54 in.)	56 mm (2.20 in.)
Backhoe Bucket, Heavy-Duty Option (1)		100 mm (3.94 in.)	63 mm (2.48 in.)
Backhoe Swing (2)		90 mm (3.54 in.)	50 mm (1.97 in.)
Backhoe Extendable Dipperstick (1)		70 mm (2.76 in.)	40 mm (1.57 in.)
Backhoe Stabilizer, Standard (2)		90 mm (3.54 in.)	50 mm (1.97 in.)
Backhoe Stabilizer, Longer Optional (2)		100 mm (3.94 in.)	50 mm (1.97 in.)
Non-Powered Axle (1)		70 mm (2.76 in.)	42 mm (1.65 in.)
MFWD (1)		67 mm (2.64 in.)	42 mm (1.65 in.)
Electrical			
Voltage		12 volt	
Alternator Rating		90 amp	
Lights		10 halogen: 4 front, 4 rear, and 2 side docking (32,500 candlepower each); turn signals and flashers: 2 front and 2 rear; stop and taillights; and 2 rear reflectors	
Operator Station			
Type (SAE J1040)		Canopy, isolation mounted, ROPS/FOPS, left/right access, with molded roof	
Tires/Wheels			
		Front	Rear
Non-Powered Front Axle		11L-16 F-3 (12)	19.5L-24 R-4 (10)
MFWD		12.5/80-18 I-3 (14)	19.5L-24 R-4 (10)
		12.5/80-18 I-3 (12)	19.5L-24 R-4 (10)
		12.5/80-18 I-3 (12)	21L-24 R-4 (12)
		340/80R18 XMCL	500/70R24 XMCL
Serviceability			
Hydraulic Oil Filter, Spin-On Enclosed Replaceable Element		6-micron filtration; 1,000 break-in/service hours	
Refill Capacities			
Cooling System		32.9 L (34.8 qt.)	
Rear Axle		18 L (19 qt.)	
Engine Oil (including vertical spin-on filter)		13 L (13.7 qt.)	
Torque Converter and Transmission		15.1 L (16 qt.)	
Fuel Tank (with ground-level fueling)		155.2 L (41 gal.)	
Hydraulic System		89.3 L (23.6 gal.)	
Hydraulic Reservoir		37.1 L (9.8 gal.)	
MFWD Housing			
Axle		6.5 L (6.9 qt.)	
Planetary (each)		0.9 L (1 qt.)	
Operating Weights			
With Full Fuel Tank, 79-kg (175 lb.) Operator, and Standard Equipment		6655 kg (14,671 lb.)	
Typical with Cab, MFWD, Extendable Dipperstick, and 454-kg (1,000 lb.) Counterweight		7780 kg (17,152 lb.)	
Adjustments to Operating Weights with Optional Components			
Cab		263 kg (580 lb.)	
MFWD with Tires		220 kg (485 lb.)	
Extendable Dipperstick		222 kg (490 lb.)	
Front Loader Coupler		286 kg (630 lb.)	
Backhoe Bucket Coupler		63 kg (138 lb.)	

Overall Dimensions

310SK

A Ground Clearance, Minimum	330 mm (13 in.)
B Overall Length, Transport	7.16 m (23 ft. 6 in.)
C Width Over Tires	2.18 m (7 ft. 2 in.)
D Height to Top of ROPS/Cab	2.79 m (9 ft. 2 in.)
E Length from Axle to Axle	
Non-Powered Front Axle	2.11 m (6 ft. 11 in.)
MFWD Axle	2.14 m (7 ft. 0 in.)



Backhoe Dimensions/Performance

310SK

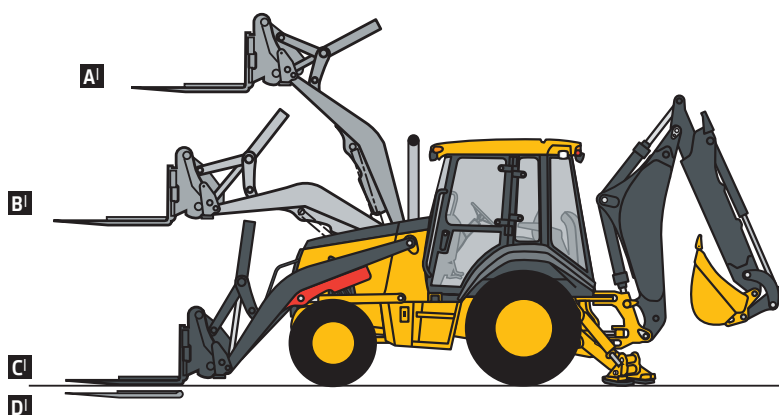
Backhoe specifications are with 610-mm x 0.21-m³ (24 in. x 7.5 cu. ft.) bucket

Bucket Range	305–762 mm (12–30 in.)
Digging Force	
Bucket Cylinder	53.3 kN (11,990 lb.)
With Heavy-Duty Cylinder Option	67.8 kN (15,236 lb.)
Crowd Cylinder	36.0 kN (8,090 lb.)
Swing Arc	180 deg.
Operator Control	2 levers

With Optional Extendable Dipperstick

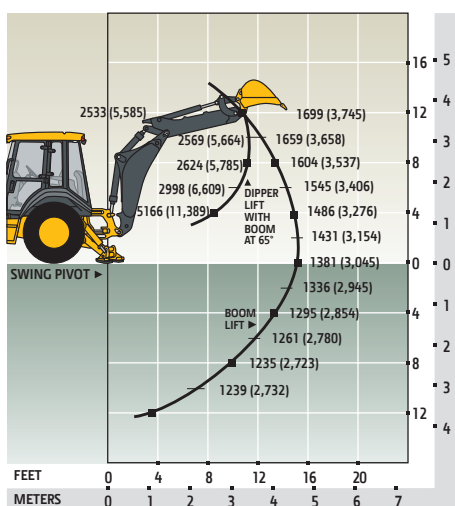
	With Standard Backhoe	Retracted	Extended
F Loading Height, Truck Loading Position	3.43 m (11 ft. 3 in.)	3.43 m (11 ft. 3 in.)	4.29 m (14 ft. 1 in.)
G Reach from Center of Swing Pivot	5.56 m (18 ft. 3 in.)	5.66 m (18 ft. 7 in.)	6.68 m (21 ft. 11 in.)
H Reach from Center of Rear Axle	6.63 m (21 ft. 9 in.)	6.73 m (22 ft. 1 in.)	7.72 m (25 ft. 4 in.)
I Digging Depth (SAE maximum)	4.42 m (14 ft. 6 in.)	4.55 m (14 ft. 11 in.)	5.61 m (18 ft. 5 in.)
J Digging Depth (SAE)			
610-mm (2 ft.) Flat Bottom	4.37 m (14 ft. 4 in.)	4.50 m (14 ft. 9 in.)	5.56 m (18 ft. 3 in.)
2440-mm (8 ft.) Flat Bottom	4.06 m (13 ft. 4 in.)	4.19 m (13 ft. 9 in.)	5.33 m (17 ft. 6 in.)
K Stabilizer Width, Transport	2.18 m (7 ft. 2 in.)	2.18 m (7 ft. 2 in.)	2.18 m (7 ft. 2 in.)
L Stabilizer Spread, Operating			
Standard Stabilizers	3.10 m (10 ft. 2 in.)	3.10 m (10 ft. 2 in.)	3.10 m (10 ft. 2 in.)
Long Stabilizers	3.45 m (11 ft. 4 in.)	3.45 m (11 ft. 4 in.)	3.45 m (11 ft. 4 in.)
M Stabilizer Overall Width, Operating			
Standard Stabilizers	3.53 m (11 ft. 7 in.)	3.53 m (11 ft. 7 in.)	3.53 m (11 ft. 7 in.)
Long Stabilizers	4.03 m (13 ft. 3 in.)	4.03 m (13 ft. 3 in.)	4.03 m (13 ft. 3 in.)
N Bucket Rotation	190 deg.	190 deg.	190 deg.
O Transport Height	3.51 m (11 ft. 6 in.)	3.48 m (11 ft. 5 in.)	3.48 m (11 ft. 5 in.)

Loader Dimensions/Performance		310SK			
P	Bucket Dump Angle, Maximum	45 deg.			
Q	Rollback Angle at Ground Level	40 deg.			
		Standard Loader Option			
		Heavy-duty	Heavy-duty long lip	Heavy-duty	Multipurpose
Bucket Capacity		0.86 m ³ (1.12 cu. yd.)	0.96 m ³ (1.25 cu. yd.)	1.00 m ³ (1.31 cu. yd.)	1.00 m ³ (1.31 cu. yd.)
Width		2184 mm (86 in.)	2184 mm (86 in.)	2337 mm (92 in.)	2337 mm (92 in.)
Weight		390 kg (860 lb.)	405 kg (892 lb.)	521 kg (1,148 lb.)	816 kg (1,800 lb.)
Breakout Force		49.2 kN (11,051 lb.)	45.4 kN (10,210 lb.)	45.8 kN (10,300 lb.)	42.9 kN (9,650 lb.)
Lift Capacity, Full Height		3335 kg (7,353 lb.)	3329 kg (7,340 lb.)	3266 kg (7,200 lb.)	2994 kg (6,600 lb.)
R	Height to Bucket Hinge Pin, Maximum	3.40 m (11 ft. 2 in.)	3.40 m (11 ft. 2 in.)	3.40 m (11 ft. 2 in.)	3.40 m (11 ft. 2 in.)
S	Dump Clearance, Bucket at 45 deg.	2.69 m (8 ft. 10 in.)	2.48 m (8 ft. 2 in.)	2.64 m (8 ft. 8 in.)	2.62 m (8 ft. 7 in.)
T	Reach at Full Height, Bucket at 45 deg.	767 mm (30.2 in.)	911 mm (35.9 in.)	765 mm (30.1 in.)	818 mm (32.2 in.)
U	Digging Depth Below Ground, Bucket Level	175 mm (6.9 in.)	147 mm (5.8 in.)	206 mm (8.1 in.)	185 mm (7.3 in.)
V	Length from Front Axle Centerline to Bucket Cutting Edge	2.03 m (6 ft. 8 in.)	2.18 m (7 ft. 2 in.)	2.03 m (6 ft. 8 in.)	2.15 m (7 ft. 1 in.)
Lift Capacity with Quick-Coupler/Forks		310SK			
Hydraulic Capacity		1219-mm (48 in.) Tines	1524-mm (60 in.) Tines		
A ¹	Maximum Height	2073 kg (4,570 lb.)	1891 kg (4,170 lb.)		
B ¹	Maximum Reach	3162 kg (6,971 lb.)	3003 kg (6,621 lb.)		
C ¹	At Ground Line	4145 kg (9,138 lb.)	3883 kg (8,561 lb.)		
D ¹	Below Ground Line	211 mm (8.3 in.)	211 mm (8.3 in.)		

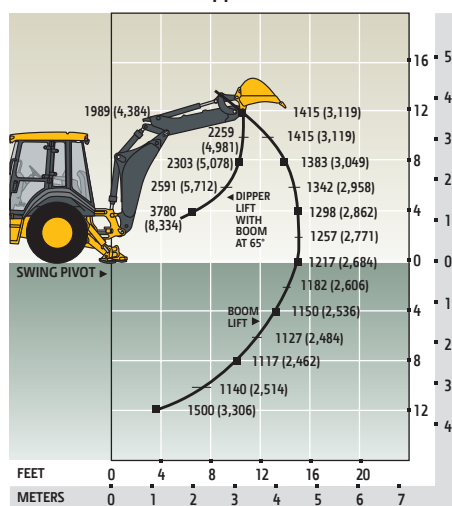


Lift capacities are over-end values in kg (lb.) according to SAE J31. Figures listed are 87% of the maximum lift force available. Base vehicle includes counterweight.

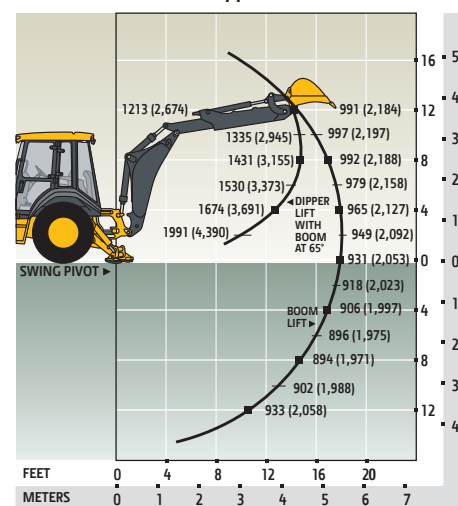
310SK Backhoe with Standard Dipperstick



310SK Backhoe with 1.07-m (3 ft. 6 in.) Extendable Dipperstick, Retracted



310SK Backhoe with 1.07-m (3 ft. 6 in.) Extendable Dipperstick, Extended



315SK



Engine	315SK		
Manufacturer and Model	John Deere PowerTech™ 4045HT054 turbocharged, standard		
Non-Road Emissions Standard	EPA Tier 3/EU Stage IIIA		
Displacement	4.5 L (276 cu. in.)		
Net Peak Power (ISO 9249)	71 kW (95 hp) at 1,900 rpm		
Net Peak Torque (ISO 9249)	399 Nm (294 lb.-ft.) at 1,300 rpm		
Net Torque Rise	43%		
Lubrication	Pressure system with spin-on filter and cooler		
Air Cleaner	Dual-stage dry type with safety element and evacuator valve		
Cooling			
Fan Type	Suction type		
Engine Coolant Rating	−40 deg. C (−40 deg. F)		
Engine Oil Cooler	Oil to water		
Powertrain			
Transmission	5 speed, helical-cut gears, full PowerShift™ transmission with hydraulic reverser standard; electric clutch cutoff on loader lever		
Torque Converter	Single stage, dual phase with 2.63:1 stall ratio, 280 mm (11 in.)		
Maximum Travel Speeds with Standard Engine, Measured with 16.9-28 Rear Tires	Forward	Reverse	
Gear 1	5.9 km/h (3.7 mph)	7.5 km/h (4.6 mph)	
Gear 2	10.8 km/h (6.7 mph)	13.6 km/h (8.5 mph)	
Gear 3	22.1 km/h (13.7 mph)	21.8 km/h (13.6 mph)	
Gear 4	34.4 km/h (21.4 mph)	—	
Gear 5	40.0 km/h (25.0 mph)	—	
Axles			
Axle Oscillation, Stop to Stop, Front Axle	22 deg.		
Axle Ratings	Non-Powered Front	Mechanical-Front-Wheel Drive (MFWD)	Rear
Static	18 000 kg (39,683 lb.)	12 000 kg (26,455 lb.)	13 000 kg (28,660 lb.)
Dynamic	7200 kg (15,873 lb.)	6000 kg (13,228 lb.)	7000 kg (15,432 lb.)
Ultimate	32 950 kg (72,642 lb.)	28 200 kg (62,170 lb.)	30 600 kg (67,461 lb.)
Differentials			
MFWD Axle	Automatic, limited-slip traction control		
Rear Axle	Electric, foot-actuated, 100% hydraulic locking		
Steering (ISO 5010)	Hydrostatic power steering and emergency steering		
Axle	Non-Powered Front	MFWD	
Curb-Turning Radius			
With Brakes	3.44 m (11 ft. 4 in.)	3.58 m (11 ft. 9 in.)	
Without Brakes	3.94 m (12 ft. 11 in.)	4.08 m (13 ft. 5 in.)	
Bucket Clearance Circle			
With Brakes	9.89 m (32 ft. 5 in.)	10.11 m (33 ft. 2 in.)	
Without Brakes	10.76 m (35 ft. 4 in.)	11.05 m (36 ft. 3 in.)	
Steering Wheel Turns (lock to lock)	3.2	2.7	
Final Drive			
Mechanical-Front Wheel	Heavy duty, outboard planetary final drives distribute shock loads over 3 gears		
Rear Axle	Heavy duty, outboard planetary final drives distribute shock loads over 4 gears		
Brakes (SAE J1473)			
Service	Power assisted, hydraulic wet disc, mounted inboard, self-adjusting and self-equalizing		
Parking	Spring applied, hydraulically released, wet, multi-disc, independent of service brakes with electric switch control		
Hydraulics			
Main Pump	Open center, gear type, tandem with unloader		
Pump Flow at 2,200 rpm			
Backhoe	136 L/m (36 gpm)		
Loader	106 L/m (28 gpm)		

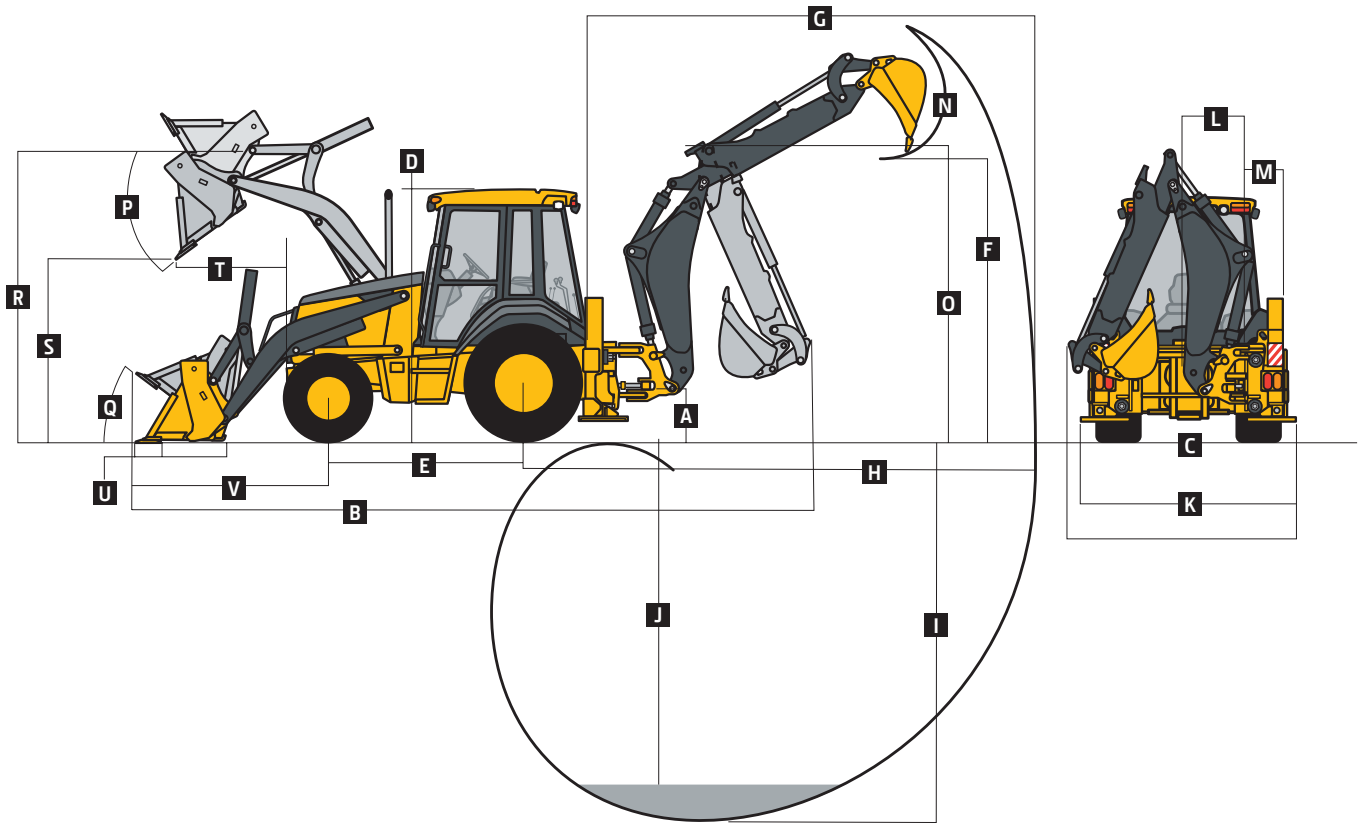


Hydraulics <i>(continued)</i>		315SK	
System Relief Pressure			
Backhoe		24 993 kPa (3,625 psi)	
Loader		24 993 kPa (3,625 psi)	
Controls			
Backhoe		2-lever manual standard; manual and/or electric auxiliary functions optional	
Loader		Single-lever control with electric clutch cutoff switch standard; manual auxiliary functions (2nd lever) optional	
Cylinders			
Type		Heat-treated, chrome-plated, polished rods; hardened steel (replaceable bushings) pivot pins	
	<i>Bore</i>	<i>Rod Diameter</i>	<i>Stroke</i>
Loader Boom (2)	80 mm (3.15 in.)	50 mm (1.97 in.)	790 mm (31.10 in.)
Loader Bucket (1)	90 mm (3.54 in.)	50 mm (1.97 in.)	744 mm (29.29 in.)
Backhoe Boom (1)	120 mm (4.72 in.)	56 mm (2.20 in.)	795 mm (31.30 in.)
Backhoe Crowd (1)	115 mm (4.53 in.)	63 mm (2.48 in.)	622 mm (24.47 in.)
Backhoe Bucket (1)	90 mm (3.54 in.)	56 mm (2.20 in.)	810 mm (31.89 in.)
Backhoe Swing (2)	90 mm (3.54 in.)	50 mm (1.97 in.)	278 mm (10.94 in.)
Backhoe Extendable Dipperstick (1)	70 mm (2.76 in.)	40 mm (1.57 in.)	1067 mm (42.01 in.)
Backhoe Stabilizer, Standard (2)	70 mm (2.76 in.)	45 mm (1.77 in.)	716 mm (28.19 in.)
Non-Powered Axle (1)	70 mm (2.76 in.)	42 mm (1.65 in.)	213 mm (8.39 in.)
MFWD (1)	67 mm (2.64 in.)	42 mm (1.65 in.)	210 mm (8.27 in.)
Electrical			
Voltage		12 volt	
Alternator Rating		90 amp	
Lights		10 halogen: 4 front, 4 rear, and 2 side docking (32,500 candlepower each); turn signals and flashers: 2 front and 2 rear; stop and taillights; and 2 rear reflectors	
Operator Station			
Type (SAE J1040)		Cab, isolation mounted, ROPS/FOPS, left/right access, with molded roof	
Tires/Wheels			
	<i>Front</i>	<i>Rear</i>	
Non-Powered Front Axle	11L-16 F-3 (12)	19.5L-24 R-4 (10)	
MFWD	12.5/80-18 I-3 (14)	19.5L-24 R-4 (10)	
	12.5/80-18 I-3 (12)	19.5L-24 R-4 (10)	
	12.5/80-18 I-3 (14)	16.9-28 R-4 (10)	
Serviceability			
Hydraulic Oil Filter, Spin-On Enclosed Replaceable Element		6-micron filtration; 1,000 break-in/service hours	
Refill Capacities			
Cooling System		32.9 L (34.8 qt.)	
Rear Axle		18 L (19 qt.)	
Engine Oil (including vertical spin-on filter)		13 L (13.7 qt.)	
Torque Converter and Transmission		15.1 L (16 qt.)	
Fuel Tank (with ground-level fueling)		155.2 L (41 gal.)	
Hydraulic System		89.3 L (23.6 gal.)	
Hydraulic Reservoir		37.1 L (9.8 gal.)	
MFWD Housing			
Axle		6.5 L (6.9 qt.)	
Planetary (each)		0.9 L (1 qt.)	
Operating Weights			
With Full Fuel Tank, 79-kg (175 lb.) Operator, and Standard Equipment		7664 kg (16,897 lb.)	
Typical with Cab, MFWD, Extendable Dipperstick, and 568-kg (1,250 lb.) Counterweight		8590 kg (18,938 lb.)	
Adjustments to Operating Weights with Optional Components			
MFWD with Tires		220 kg (485 lb.)	
Extendable Dipperstick		222 kg (490 lb.)	

Overall Dimensions

315SK

A Ground Clearance, Minimum	351 mm (14 in.)
B Overall Length, Transport	5.26 m (17 ft. 3 in.)
C Width Over Tires	2.40 m (7 ft. 10 in.)
D Height to Top of ROPS/Cab	2.79 m (9 ft. 2 in.)
E Length from Axle to Axle	
Non-Powered Front Axle	2.11 m (6 ft. 11 in.)
MFWD Axle	2.14 m (7 ft. 0 in.)



Backhoe Dimensions/Performance

315SK

Backhoe specifications are with 610-mm x 0.21-m³ (24 in. x 7.5 cu. ft.) bucket

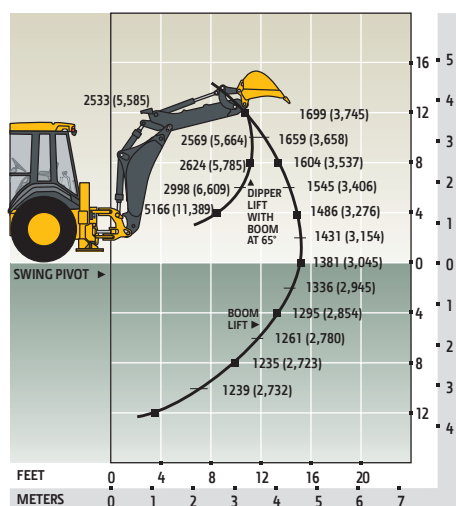
Bucket Range	305–762 mm (12–30 in.)
Digging Force	
Bucket Cylinder	53.3 kN (11,990 lb.)
With Heavy-Duty Cylinder Option	67.8 kN (15,236 lb.)
Crowd Cylinder	36.0 kN (8,090 lb.)
Swing Arc	180 deg.
Operator Control	2 levers

	With Standard Backhoe	With Optional Extendable Dipperstick	
		Retracted	Extended
F Loading Height, Truck Loading Position	3.58 m (11 ft. 9 in.)	3.58 m (11 ft. 9 in.)	4.34 m (14 ft. 3 in.)
G Reach from Center of Swing Pivot	5.51 m (18 ft. 1 in.)	5.61 m (18 ft. 5 in.)	6.63 m (21 ft. 9 in.)
H Reach from Center of Rear Axle	6.91 m (22 ft. 8 in.)	7.01 m (23 ft. 0 in.)	8.03 m (26 ft. 4 in.)
I Digging Depth (SAE maximum)	4.29 m (14 ft. 1 in.)	4.42 m (14 ft. 6 in.)	5.49 m (18 ft. 0 in.)
J Digging Depth (SAE)			
610-mm (2 ft.) Flat Bottom	4.27 m (14 ft. 0 in.)	4.40 m (14 ft. 5 in.)	5.44 m (17 ft. 10 in.)
2440-mm (8 ft.) Flat Bottom	3.96 m (13 ft. 0 in.)	4.09 m (13 ft. 5 in.)	5.22 m (17 ft. 2 in.)
K Overall Width (less loader bucket)	2.49 m (8 ft. 2 in.)	2.49 m (8 ft. 2 in.)	—
L Side-Shift from Tractor Centerline	542 mm (21 in.)	542 mm (21 in.)	542 mm (21 in.)
M Wall to Swing Centerline	620 mm (24 in.)	620 mm (24 in.)	620 mm (24 in.)
N Bucket Rotation	190 deg.	190 deg.	190 deg.
O Transport Height	3.48 m (11 ft. 5 in.)	3.48 m (11 ft. 5 in.)	3.48 m (11 ft. 5 in.)

Loader Dimensions/Performance		315SK			
P	Bucket Dump Angle, Maximum	45 deg.			
Q	Rollback Angle at Ground Level	40 deg.			
		<i>Heavy-duty</i>	<i>Heavy-duty long lip</i>	<i>Heavy-duty</i>	<i>Multipurpose</i>
Bucket Capacity		0.77 m ³ (1.00 cu. yd.)	0.96 m ³ (1.25 cu. yd.)	1.00 m ³ (1.31 cu. yd.)	1.00 m ³ (1.31 cu. yd.)
Width		2184 mm (86 in.)	2184 mm (86 in.)	2337 mm (92 in.)	2337 mm (92 in.)
Weight		363 kg (800 lb.)	405 kg (892 lb.)	521 kg (1,148 lb.)	816 kg (1,800 lb.)
Breakout Force		49.6 kN (11,160 lb.)	45.4 kN (10,210 lb.)	45.8 kN (10,300 lb.)	42.9 kN (9,650 lb.)
Lift Capacity, Full Height		3365 kg (7,419 lb.)	3329 kg (7,340 lb.)	3266 kg (7,200 lb.)	2994 kg (6,600 lb.)
R	Height to Bucket Hinge Pin, Maximum	3.40 m (11 ft. 2 in.)	3.40 m (11 ft. 2 in.)	3.40 m (11 ft. 2 in.)	3.40 m (11 ft. 2 in.)
S	Dump Clearance, Bucket at 45 deg.	2.69 m (8 ft. 10 in.)	2.48 m (8 ft. 2 in.)	2.64 m (8 ft. 8 in.)	2.62 m (8 ft. 7 in.)
T	Reach at Full Height, Bucket at 45 deg.	785 mm (30.9 in.)	911 mm (35.9 in.)	765 mm (30.1 in.)	818 mm (32.2 in.)
U	Digging Depth Below Ground, Bucket Level	160 mm (6.3 in.)	147 mm (5.8 in.)	206 mm (8.1 in.)	185 mm (7.3 in.)
V	Length from Front Axle Centerline to Bucket Cutting Edge	2.03 m (6 ft. 8 in.)	2.18 m (7 ft. 2 in.)	2.03 m (6 ft. 8 in.)	2.15 m (7 ft. 1 in.)

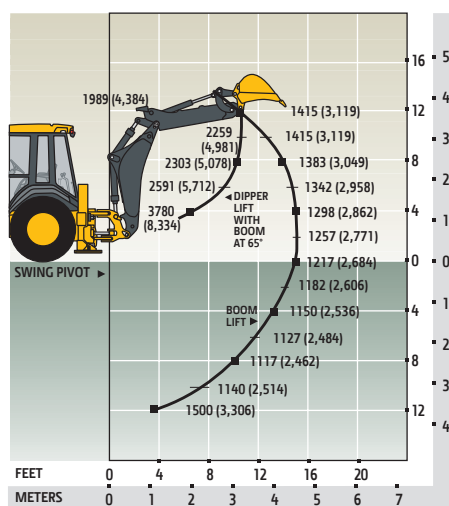
Lift capacities are over-end values in kg (lb.) according to SAE J31. Figures listed are 87% of the maximum lift force available. Base vehicle includes counterweight.

315SK Backhoe with Standard Dipperstick



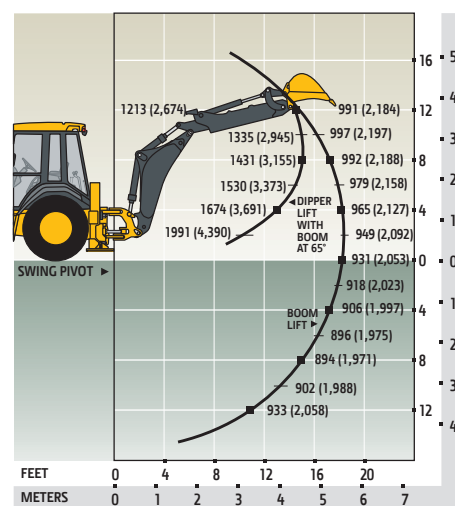
315SK Backhoe with 1.07-m (3 ft. 6 in.)

Extendable Dipperstick, Retracted



315SK Backhoe with 1.07-m (3 ft. 6 in.)

Extendable Dipperstick, Extended



410K

Engine	410K		
Manufacturer and Model	John Deere PowerTech™ E 4045HT054 turbocharged		
Non-Road Emissions Standard	EPA Tier 3/EU Stage IIIA		
Displacement	4.5 L (276 cu. in.)		
Net Peak Power (ISO 9249)	75 kW (101 hp) at 2,000 rpm		
Net Peak Torque (ISO 9249)	422 Nm (311 lb.-ft.) at 1,300 rpm		
Net Torque Rise	43%		
Lubrication	Pressure system with spin-on filter and cooler		
Air Cleaner	Dual-stage dry type with safety element and evacuator valve		
Cooling			
Fan Type	Suction type		
Engine Coolant Rating	−40 deg. C (−40 deg. F)		
Engine Oil Cooler	Oil to water		
Powertrain			
Transmission	5 speed, helical-cut gears, full PowerShift™ transmission with hydraulic reverser standard; electric clutch cutoff on loader lever		
Torque Converter	Single stage, dual phase with 2.63:1 stall ratio, 280 mm (11 in.)		
Maximum Travel Speeds with Standard Engine, Measured with 21L-24 Rear Tires	Forward	Reverse	
Gear 1	5.7 km/h (3.6 mph)	7.2 km/h (4.5 mph)	
Gear 2	10.5 km/h (6.5 mph)	13.2 km/h (8.2 mph)	
Gear 3	21.3 km/h (13.2 mph)	21.2 km/h (13.2 mph)	
Gear 4	33.1 km/h (20.5 mph)	—	
Gear 5	40.0 km/h (25.0 mph)	—	
Axles			
Axle Oscillation, Stop to Stop, Front Axle	22 deg.		
Axle Ratings	Non-Powered Front	Mechanical-Front-Wheel Drive (MFWD)	Rear
Static	18 000 kg (39,683 lb.)	12 000 kg (26,455 lb.)	13 000 kg (28,660 lb.)
Dynamic	7200 kg (15,873 lb.)	6000 kg (13,228 lb.)	7000 kg (15,432 lb.)
Ultimate	32 950 kg (72,642 lb.)	28 200 kg (62,170 lb.)	30 600 kg (67,461 lb.)
Differentials			
MFWD Axle	Automatic, limited-slip traction control		
Rear Axle	Electric, foot actuated, 100% hydraulic locking		
Steering (ISO 5010)	Hydrostatic power steering and emergency steering		
Axle	Non-Powered Front	MFWD	
Curb-Turning Radius			
With Brakes	3.44 m (11 ft. 4 in.)	3.58 m (11 ft. 9 in.)	
Without Brakes	3.94 m (12 ft. 11 in.)	4.08 m (13 ft. 5 in.)	
Bucket Clearance Circle			
With Brakes	9.89 m (32 ft. 5 in.)	10.11 m (33 ft. 2 in.)	
Without Brakes	10.76 m (35 ft. 4 in.)	11.05 m (36 ft. 3 in.)	
Steering Wheel Turns (lock to lock)	3.1 to 4.3	2.6 to 3.6	
Final Drive			
Mechanical-Front Wheel	Heavy duty, outboard planetary final drives distribute shock loads over 3 gears		
Rear Axle	Heavy duty, outboard planetary final drives distribute shock loads over 4 gears		
Brakes (SAE J1473)			
Service	Power assisted, hydraulic wet disc, mounted inboard, self-adjusting and self-equalizing		
Parking	Spring applied, hydraulically released, wet, multi-disc, independent of service brakes with electric switch control		
Hydraulics			
Main Pump	Pressure compensated load sensing (PCLS), axial-piston pump		
Pump Flow at 2,200 rpm			
Backhoe	159 L/m (42 gpm)		
Loader	159 L/m (42 gpm)		
System Relief Pressure			
Backhoe	24 993 kPa (3,625 psi)		
Loader	24 993 kPa (3,625 psi)		

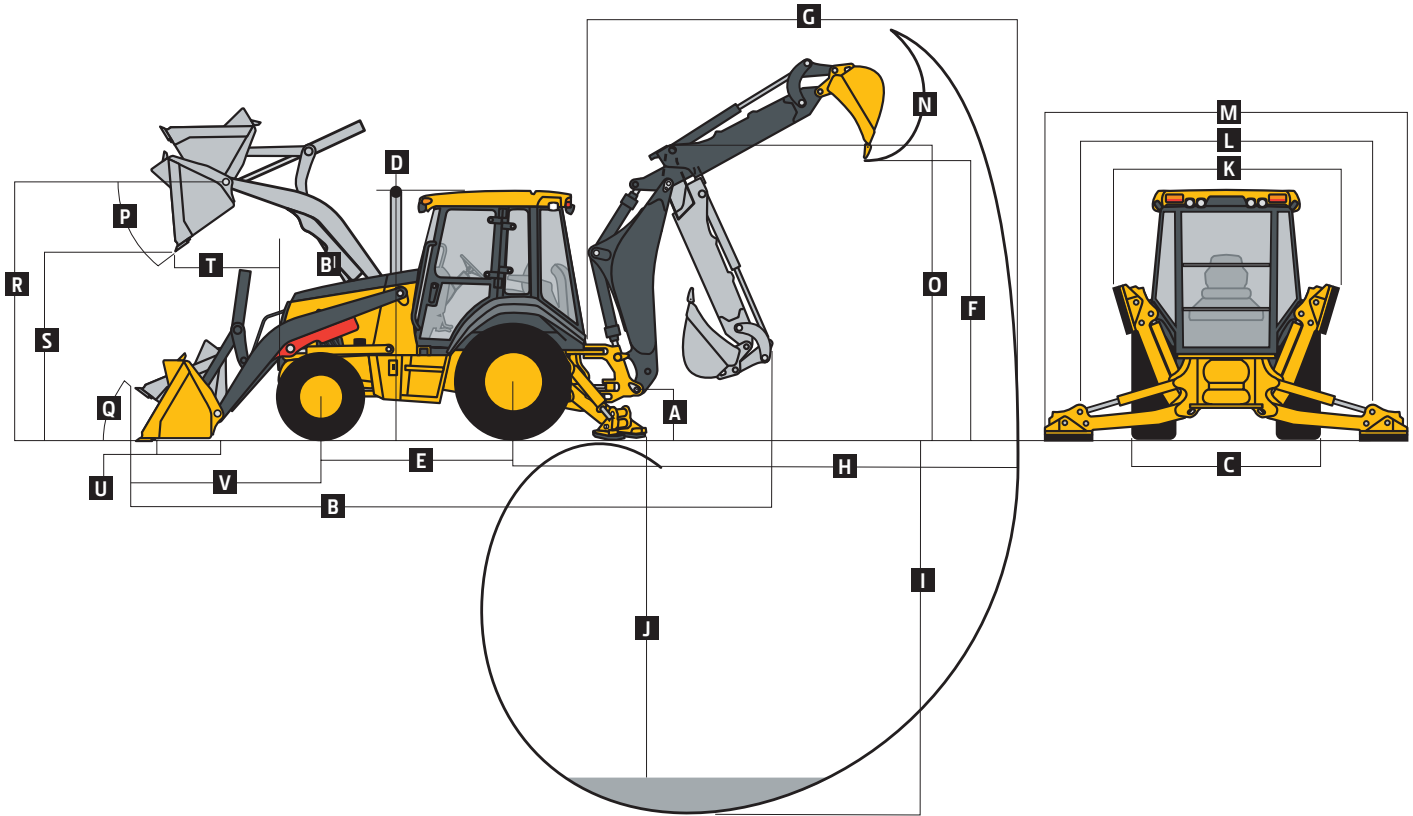


Hydraulics (continued)		410K	
Controls			
Backhoe	2-lever manual standard; pilot controls with pattern select and manual and/or electric auxiliary functions optional		
Loader	Single-lever control with electric clutch cutoff switch standard; single-lever control with electric clutch cutoff switch, electrohydraulic (EH) proportional auxiliary roller, and MFWD (on/off/momentary) with auxiliary hydraulics optional		
Cylinders			
Type	Heat-treated, chrome-plated, polished rods; hardened steel (replaceable bushings) pivot pins		
	Bore	Rod Diameter	Stroke
Loader Boom (2)	80 mm (3.15 in.)	50 mm (1.97 in.)	790 mm (31.10 in.)
Loader Bucket (1)	90 mm (3.54 in.)	50 mm (1.97 in.)	744 mm (29.29 in.)
Backhoe Boom (1)	125 mm (4.92 in.)	63 mm (2.48 in.)	897 mm (35.31 in.)
Backhoe Crowd (1)	115 mm (4.53 in.)	63 mm (2.48 in.)	698 mm (27.49 in.)
Backhoe Bucket (1)	100 mm (3.94 in.)	63 mm (2.48 in.)	810 mm (31.89 in.)
Backhoe Swing (2)	90 mm (3.54 in.)	50 mm (1.97 in.)	278 mm (10.94 in.)
Backhoe Extendable Dipperstick (1)	70 mm (2.76 in.)	40 mm (1.57 in.)	1214 mm (47.78 in.)
Backhoe Stabilizer, Standard (2)	100 mm (3.94 in.)	50 mm (1.97 in.)	500 mm (19.69 in.)
Non-Powered Axle (1)	70 mm (2.76 in.)	42 mm (1.65 in.)	213 mm (8.39 in.)
MFWD (1)	67 mm (2.64 in.)	42 mm (1.65 in.)	210 mm (8.27 in.)
Electrical			
Voltage	12 volt		
Alternator Rating	90 amp		
Lights	10 halogen: 4 front, 4 rear, and 2 side docking (32,500 candlepower each); turn signals and flashers: 2 front and 2 rear; stop and taillights; and 2 rear reflectors		
Operator Station			
Type (SAE J1040)	Canopy, isolation mounted, ROPS/FOPS, left/right access, with molded roof		
Tires/Wheels			
	Front	Rear	
Non-Powered Front Axle	14.5/75-16.1 SL F-3 (10)	21L-24 R-4 (10)	
MFWD	12.5/80-18 I-3 (14)	19.5L-24 R-4 (10)	
	12.5/80-18 I-3 (14)	21L-24 R-4 (10)	
	12.5/80-18 I-3 (12)	21L-24 R-4 (12)	
	340/80R18 XMCL	500/70R24 XMCL	
Serviceability			
Hydraulic Oil Filter, Spin-On Enclosed Replaceable Element	6-micron filtration; 1,000 break-in/service hours		
Refill Capacities			
Cooling System	32.9 L (34.8 qt.)		
Rear Axle	18 L (19 qt.)		
Engine Oil (including vertical spin-on filter)	13 L (13.7 qt.)		
Torque Converter and Transmission	15.1 L (16 qt.)		
Fuel Tank (with ground-level fueling)	155.2 L (41 gal.)		
Hydraulic System	93.1 L (24.6 gal.)		
Hydraulic Reservoir	37.1 L (9.8 gal.)		
MFWD Housing			
Axle	6.5 L (6.9 qt.)		
Planetary (each)	0.9 L (1 qt.)		
Operating Weights			
With Full Fuel Tank, 79-kg (175 lb.) Operator, and Standard Equipment	7402 kg (16,318 lb.)		
Typical with Cab, MFWD, Extendable Dipperstick, and 454-kg (1,000 lb.) Counterweight	8582 kg (18,919 lb.)		
Adjustments to Operating Weights with Optional Components			
Cab	263 kg (580 lb.)		
MFWD with Tires	220 kg (485 lb.)		
Extendable Dipperstick	289 kg (638 lb.)		
Front Loader Coupler	286 kg (630 lb.)		
Backhoe Bucket Coupler	63 kg (138 lb.)		

Overall Dimensions

410K

A Ground Clearance, Minimum	356 mm (14 in.)
B Overall Length, Transport	7.29 m (23 ft. 11 in.)
C Width Over Tires	2.18 m (7 ft. 2 in.)
D Height to Top of ROPS/Cab	2.82 m (9 ft. 3 in.)
E Length from Axle to Axle	
Non-Powered Front Axle	2.11 m (6 ft. 11 in.)
MFWD Axle	2.14 m (7 ft. 0 in.)



Backhoe Dimensions/Performance

410K

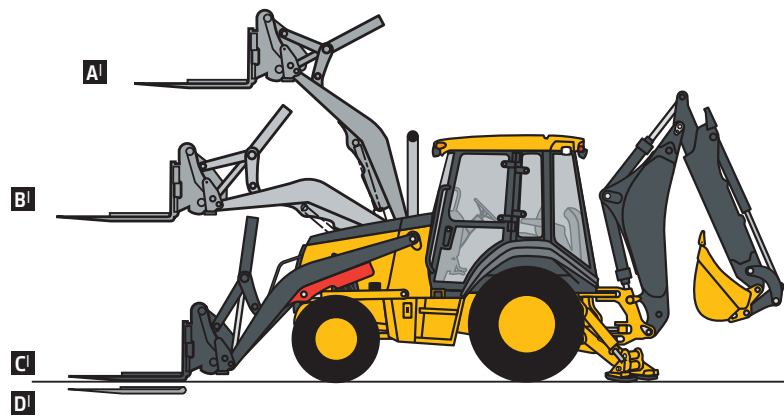
Backhoe specifications are with 610-mm x 0.21-m³ (24 in. x 7.5 cu. ft.) bucket

Bucket Range	305–762 mm (12–30 in.)
Digging Force	
Bucket Cylinder	65.8 kN (14,801 lb.)
Crowd Cylinder	38.9 kN (8,741 lb.)
Swing Arc	180 deg.
Operator Control	2 levers

With Optional Extendable Dipperstick

	With Standard Backhoe	Retracted	Extended
F Loading Height, Truck Loading Position	3.81 m (12 ft. 6 in.)	3.86 m (12 ft. 8 in.)	4.72 m (15 ft. 6 in.)
G Reach from Center of Swing Pivot	5.99 m (19 ft. 8 in.)	6.07 m (19 ft. 11 in.)	7.21 m (23 ft. 8 in.)
H Reach from Center of Rear Axle	7.11 m (23 ft. 4 in.)	7.19 m (23 ft. 7 in.)	8.33 m (27 ft. 4 in.)
I Digging Depth (SAE maximum)	4.83 m (15 ft. 10 in.)	4.90 m (16 ft. 1 in.)	6.10 m (20 ft. 0 in.)
J Digging Depth (SAE)			
610-mm (2 ft.) Flat Bottom	4.78 m (15 ft. 8 in.)	4.85 m (15 ft. 11 in.)	6.07 m (19 ft. 11 in.)
2440-mm (8 ft.) Flat Bottom	4.45 m (14 ft. 7 in.)	4.55 m (14 ft. 11 in.)	5.82 m (19 ft. 1 in.)
K Stabilizer Width, Transport	2.30 m (7 ft. 7 in.)	2.30 m (7 ft. 7 in.)	2.30 m (7 ft. 7 in.)
L Stabilizer Spread, Operating	3.45 m (11 ft. 4 in.)	3.45 m (11 ft. 4 in.)	3.45 m (11 ft. 4 in.)
M Stabilizer Overall Width, Operating	4.03 m (13 ft. 3 in.)	4.03 m (13 ft. 3 in.)	4.03 m (13 ft. 3 in.)
N Bucket Rotation	190 deg.	190 deg.	190 deg.
O Transport Height	3.94 m (12 ft. 11 in.)	3.91 m (12 ft. 10 in.)	3.91 m (12 ft. 10 in.)

Loader Dimensions/Performance		410K		
P	Bucket Dump Angle, Maximum	45 deg.		
Q	Rollback Angle at Ground Level	40 deg.		
		Standard Loader Option		
		Heavy-duty	Heavy-duty	Multipurpose
	Bucket Capacity	1.00 m ³ (1.31 cu. yd.)	1.15 m ³ (1.50 cu. yd.)	1.00 m ³ (1.31 cu. yd.)
	Width	2337 mm (92 in.)	2388 mm (94 in.)	2337 mm (92 in.)
	Weight	521 kg (1,148 lb.)	548 kg (1,208 lb.)	816 kg (1,800 lb.)
	Breakout Force	45.8 kN (10,300 lb.)	45.2 kN (10,170 lb.)	42.9 kN (9,650 lb.)
	Lift Capacity, Full Height	3266 kg (7,200 lb.)	3207 kg (7,070 lb.)	2994 kg (6,600 lb.)
R	Height to Bucket Hinge Pin, Maximum	3.35 m (11 ft. 0 in.)	3.35 m (11 ft. 0 in.)	3.35 m (11 ft. 0 in.)
S	Dump Clearance, Bucket at 45 deg.	2.69 m (8 ft. 10 in.)	2.67 m (8 ft. 9 in.)	2.62 m (8 ft. 7 in.)
T	Reach at Full Height, Bucket at 45 deg.	762 mm (30.0 in.)	787 mm (31.0 in.)	818 mm (32.2 in.)
U	Digging Depth Below Ground, Bucket Level	170 mm (6.7 in.)	157 mm (6.2 in.)	182 mm (7.2 in.)
V	Length from Front Axle Centerline to Bucket Cutting Edge	2.03 m (6 ft. 8 in.)	2.03 m (6 ft. 8 in.)	2.15 m (7 ft. 1 in.)
Lift Capacity with Quick-Coupler/Forks				
Hydraulic Capacity		1219-mm (48 in.) Tines	1524-mm (60 in.) Tines	
A ¹	Maximum Height	2073 kg (4,570 lb.)	1891 kg (4,170 lb.)	
B ¹	Maximum Reach	3162 kg (6,971 lb.)	3003 kg (6,621 lb.)	
C ¹	At Ground Line	4145 kg (9,138 lb.)	3883 kg (8,561 lb.)	
D ¹	Below Ground Line	211 mm (8.3 in.)	211 mm (8.3 in.)	

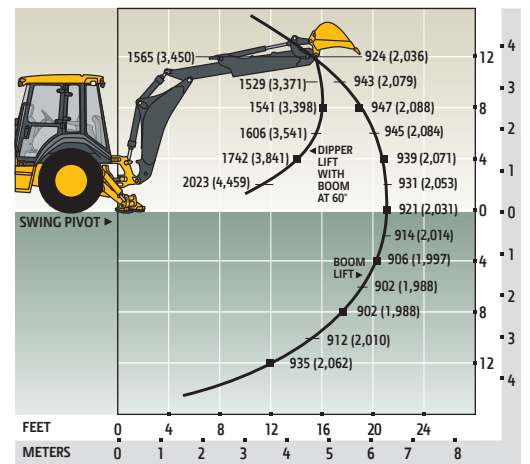
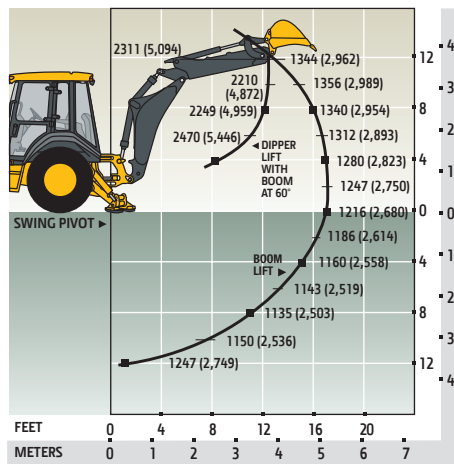
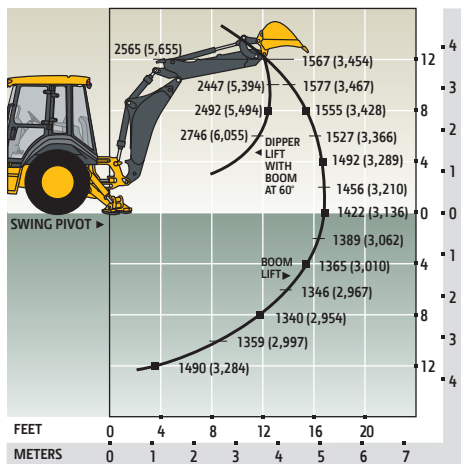


Lift capacities are over-end values in kg (lb.) according to SAE J31. Figures listed are 87% of the maximum lift force available. Base vehicle includes counterweight.

410K Backhoe with Standard Dipperstick

410K Backhoe with 1.22-m (4 ft.)
Extendable Dipperstick, Retracted

410K Backhoe with 1.22-m (4 ft.)
Extendable Dipperstick, Extended



710K

Engine		710K	
Manufacturer and Model		John Deere PowerTech™ E 6068HT067 turbocharged	
Non-Road Emissions Standard		EPA Tier 3/EU Stage IIIA	
Displacement		6.8 L (414 cu. in.)	
Net Peak Power (ISO 9249)		94 kW (126 hp) at 2,000 rpm	
Net Peak Torque (ISO 9249)		546 Nm (403 lb.-ft.) at 1,200 rpm	
Net Torque Rise		36%	
Lubrication		Pressure system with spin-on filter and cooler	
Air Cleaner		Dual-stage dry type with safety element and evacuator valve	
Cooling			
Fan Type		Suction type	
Engine Coolant Rating		−40 deg. C (−40 deg. F)	
Engine Oil Cooler		Oil to water	
Powertrain			
Transmission		4 speed, helical-cut gears, full PowerShift™ transmission with hydraulic reverser standard; electric clutch cutoff on loader lever	
Torque Converter		Single stage, dual phase with 1.95:1 stall ratio, 280 mm (11 in.)	
Maximum Travel Speeds with Standard Engine with Mechanical-Front-Wheel Drive (MFWD), Measured with 21L-28 Rear Tires		Forward	Reverse
Gear 1		6.0 km/h (3.7 mph)	6.7 km/h (4.2 mph)
Gear 2		10.0 km/h (6.2 mph)	11.1 km/h (6.9 mph)
Gear 3		23.9 km/h (14.8 mph)	26.5 km/h (16.5 mph)
Gear 4		35.1 km/h (21.8 mph)	—
Axles			
Axle Oscillation, Stop to Stop, Front Axle		22 deg.	
Axle Ratings		Non-Powered Front	MFWDRear
Static		22 950 kg (50,596 lb.)	18 500 kg (40,786 lb.)19 700 kg (43,431 lb.)
Dynamic		9200 kg (20,283 lb.)	7700 kg (16,976 lb.)9800 kg (21,605 lb.)
Ultimate		41 000 kg (90,390 lb.)	43 600 kg (96,122 lb.)46 400 kg (102,295 lb.)
Differentials			
MFWD Axle		Automatic, limited-slip traction control	
Rear Axle		Electric, foot-actuated, hydraulic locking	
Steering (ISO 5010)		Hydrostatic power steering and emergency steering	
Axle		Non-Powered Front	MFWD
Curb-Turning Radius			
With Brakes		4.04 m (13 ft. 3 in.)	4.20 m (13 ft. 9 in.)
Without Brakes		4.62 m (15 ft. 2 in.)	4.79 m (15 ft. 9 in.)
Bucket Clearance Circle			
With Brakes		11.16 m (36 ft. 7 in.)	11.40 m (37 ft. 5 in.)
Without Brakes		12.14 m (39 ft. 10 in.)	12.47 m (40 ft. 11 in.)
Steering Wheel Turns (lock to lock, flow amplified)		2.9 to 4.7	2.7 to 4.4
Final Drive			
Mechanical-Front Wheel		Heavy duty, outboard planetary final drives distribute shock loads over 3 gears	
Rear Axle		Heavy duty, outboard planetary final drives distribute shock loads over 4 gears	
Brakes (ISO 3450)			
Service		Full power, hydraulic wet disc, mounted inboard, self-adjusting and self-equalizing	
Parking		Spring applied, hydraulically released, wet, multi-disc, independent of service brakes with electric switch control	
Hydraulics			
Main Pump		Pressure compensated load sensing (PCLS), axial-piston pump	
Pump Flow at 2,200 rpm			
Backhoe		197 L/m (52 gpm)	
Loader		197 L/m (52 gpm)	
System Relief Pressure, Backhoe and Loader			
Backhoe		24 993 kPa (3,625 psi)	
Loader		24 993 kPa (3,625 psi)	

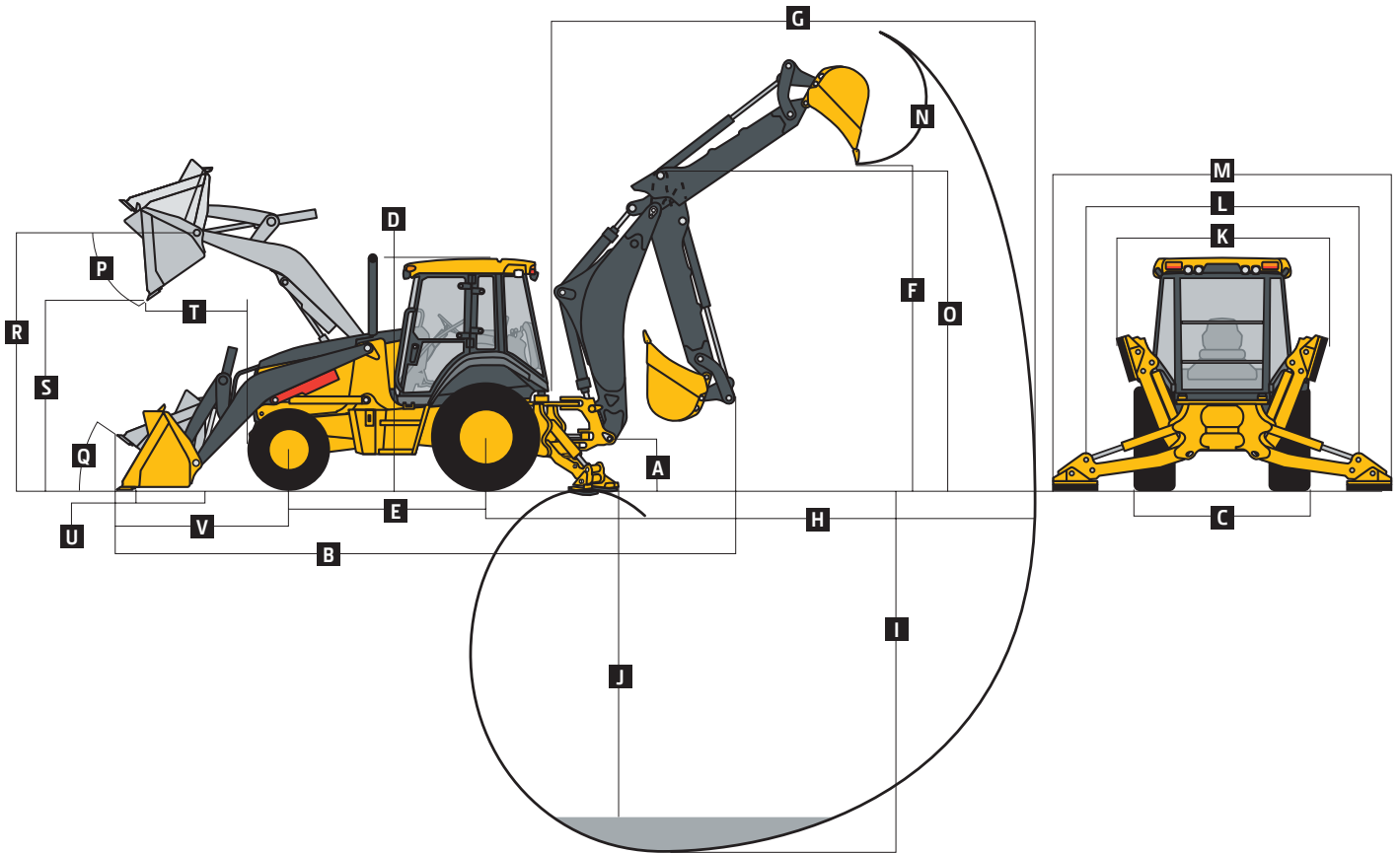


Hydraulics (continued)		710K	
Controls			
Backhoe	Pilot controls with pattern select standard; 2-lever manual and manual and/or electric auxiliary functions optional		
Loader	Single-lever control with electric clutch cutoff switch standard; single-lever control with electric clutch cutoff switch, electrohydraulic (EH) proportional auxiliary roller, and MFWD (on/off/momentary) with auxiliary hydraulics optional		
Cylinders			
Type	Heat-treated, chrome-plated, polished rods; hardened steel (replaceable bushings) pivot pins		
	Bore	Rod Diameter	Stroke
Loader Boom (2)	100 mm (3.94 in.)	56 mm (2.20 in.)	805 mm (31.69 in.)
Loader Bucket (1)	110 mm (4.33 in.)	56 mm (2.20 in.)	672 mm (26.44 in.)
Backhoe Boom (1)	160 mm (6.30 in.)	95 mm (3.74 in.)	944 mm (37.17 in.)
Backhoe Crowd (1)	140 mm (5.51 in.)	85 mm (3.35 in.)	792 mm (31.16 in.)
Backhoe Bucket (1)	110 mm (4.33 in.)	70 mm (2.76 in.)	939 mm (36.97 in.)
Backhoe Swing (2)	110 mm (4.33 in.)	56 mm (2.20 in.)	308 mm (12.13 in.)
Backhoe Extendable Dipperstick (1)	80 mm (3.15 in.)	45 mm (1.77 in.)	1372 mm (54.00 in.)
Backhoe Stabilizer, Standard (2)	115 mm (4.53 in.)	63 mm (2.48 in.)	588 mm (23.15 in.)
Non-Powered Axle (1)	75 mm (2.95 in.)	45 mm (1.77 in.)	230 mm (9.06 in.)
MFWD (1)	75 mm (2.95 in.)	50 mm (1.97 in.)	260 mm (10.24 in.)
Electrical			
Voltage	12 volt		
Alternator Rating	120 amp		
Lights	10 halogen: 4 front, 4 rear, and 2 side docking (32,500 candlepower each); turn signals and flashers: 2 front and 2 rear; stop and taillights; and 2 rear reflectors		
Operator Station			
Type (ISO 3471)	Canopy, isolation mounted, ROPS/FOPS, left/right access, with molded roof		
Tires/Wheels			
	Front	Rear	
Non-Powered Front Axle	14.5/75-16.1 F-3 (10)	21L-28 R-4 (14)	
	16.5L-16.1 I-1 (10)	21L-28 R-4 (14)	
MFWD	15-19.5 SS-1 (12)	21L-28 R-4 (14)	
	15-19.5 SS-1 (12)	20.5-25 L-2 (12)	
Serviceability			
Hydraulic Oil Filter, Spin-On Enclosed Replaceable Element	6-micron filtration; 1,000 break-in/service hours		
Refill Capacities			
Cooling System	33.9 L (35.8 qt.)		
Rear Axle	16.1 L (17 qt.)		
Engine Oil (including vertical spin-on filter)	19.5 L (20.6 qt.)		
Torque Converter and Transmission	15.1 L (16 qt.)		
Fuel Tank (with ground-level fueling)	261.2 L (69 gal.)		
Hydraulic System	149.9 L (39.6 gal.)		
Hydraulic Reservoir	45.4 L (12 gal.)		
MFWD Housing			
Axle	9 L (9.5 qt.)		
Planetary (each)	0.8 L (0.9 qt.)		
Operating Weights			
With Full Fuel Tank, 79-kg (175 lb.) Operator, and Standard Equipment	10 064 kg (22,187 lb.)		
Typical with Cab, MFWD, Extendable Dipperstick, and 635-kg (1,400 lb.) Counterweight	11 903 kg (26,242 lb.)		
Adjustments to Operating Weights with Optional Components			
Cab	293 kg (645 lb.)		
MFWD with Tires	373 kg (822 lb.)		
Extendable Dipperstick	318 kg (700 lb.)		
Front Loader Coupler	363 kg (800 lb.)		

Overall Dimensions

710K

A Ground Clearance, Minimum	356 mm (14 in.)
B Overall Length, Transport	8.23 m (27 ft. 0 in.)
C Width Over Tires	2.29 m (7 ft. 6 in.)
D Height to Top of ROPS/Cab	2.97 m (9 ft. 9 in.)
E Length from Axle to Axle	
Non-Powered Front Axle	2.58 m (8 ft. 6 in.)
MFWD Axle	2.55 m (8 ft. 4 in.)



Backhoe Dimensions/Performance

710K

Backhoe specifications are with 610-mm x 0.31-m³ (24 in. x 11.1 cu. ft.) bucket

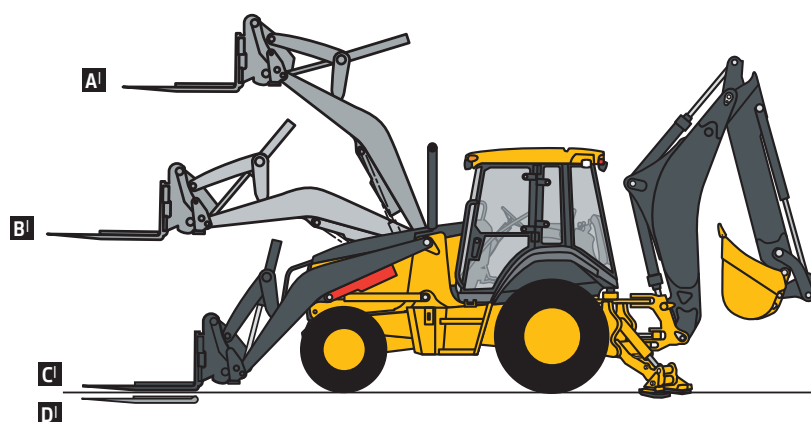
Bucket Range	610–914 mm (24–36 in.)
Digging Force	
Bucket Cylinder	75.6 kN (17,000 lb.)
Crowd Cylinder	52.3 kN (11,750 lb.)
Swing Arc	180 deg.
Operator Control	Pilot control

With Optional Extendable Dipperstick

	With Standard Backhoe	Retracted	Extended
F Loading Height, Truck Loading Position	4.34 m (14 ft. 3 in.)	4.34 m (14 ft. 3 in.)	5.18 m (17 ft. 0 in.)
G Reach from Center of Swing Pivot	6.86 m (22 ft. 6 in.)	6.86 m (22 ft. 6 in.)	8.19 m (26 ft. 10 in.)
H Reach from Center of Rear Axle	8.13 m (26 ft. 8 in.)	8.13 m (26 ft. 8 in.)	9.46 m (31 ft. 0 in.)
I Digging Depth (SAE maximum)	5.44 m (17 ft. 10 in.)	5.44 m (17 ft. 10 in.)	6.81 m (22 ft. 4 in.)
J Digging Depth (SAE)			
610-mm (2 ft.) Flat Bottom	5.41 m (17 ft. 9 in.)	5.41 m (17 ft. 9 in.)	6.83 m (22 ft. 5 in.)
2440-mm (8 ft.) Flat Bottom	5.18 m (17 ft. 0 in.)	5.18 m (17 ft. 0 in.)	6.58 m (21 ft. 7 in.)
K Stabilizer Width, Transport	2.41 m (7 ft. 11 in.)	2.41 m (7 ft. 11 in.)	2.41 m (7 ft. 11 in.)
L Stabilizer Spread, Operating	3.99 m (13 ft. 1 in.)	3.99 m (13 ft. 1 in.)	3.99 m (13 ft. 1 in.)
M Stabilizer Overall Width, Operating	4.65 m (15 ft. 3 in.)	4.65 m (15 ft. 3 in.)	4.65 m (15 ft. 3 in.)
N Bucket Rotation	190 deg.	190 deg.	190 deg.
O Transport Height	4.17 m (13 ft. 8 in.)	4.22 m (13 ft. 10 in.)	4.22 m (13 ft. 10 in.)

Loader Dimensions/Performance		710K			
P	Bucket Dump Angle, Maximum	45 deg.			
Q	Rollback Angle at Ground Level	40 deg.			
		<i>Standard duty</i>	<i>Standard duty</i>	<i>Multipurpose</i>	<i>Standard duty</i>
Bucket Capacity		1.24 m ³ (1.62 cu. yd.)	1.43 m ³ (1.87 cu. yd.)	1.05 m ³ (1.38 cu. yd.)	1.53 m ³ (2.00 cu. yd.)
Width		2464 mm (97 in.)	2464 mm (97 in.)	2451 mm (96.5 in.)	2545 mm (100 in.)
Weight		830 kg (1,830 lb.)	866 kg (1,909 lb.)	969 kg (2,136 lb.)	1260 kg (2,778 lb.)
Breakout Force		69.1 kN (15,540 lb.)	65.8 kN (14,800 lb.)	69.8 kN (15,690 lb.)	72.6 kN (16,312 lb.)
Lift Capacity, Full Height		4208 kg (9,277 lb.)	3943 kg (8,693 lb.)	3961 kg (8,732 lb.)	3139 kg (6,920 lb.)
R	Height to Bucket Hinge Pin, Maximum	3.78 m (12 ft. 5 in.)	3.78 m (12 ft. 5 in.)	3.78 m (12 ft. 5 in.)	3.78 m (12 ft. 5 in.)
S	Dump Clearance, Bucket at 45 deg.	2.92 m (9 ft. 7 in.)	2.84 m (9 ft. 4 in.)	2.95 m (9 ft. 8 in.)	2.56 m (8 ft. 5 in.)
T	Reach at Full Height, Bucket at 45 deg.	691 mm (27.2 in.)	770 mm (30.3 in.)	683 mm (26.9 in.)	976 mm (38.4 in.)
U	Digging Depth Below Ground, Bucket Level	104 mm (4.1 in.)	104 mm (4.1 in.)	81 mm (3.2 in.)	183 mm (7.2 in.)
V	Length from Front Axle Centerline to Bucket Cutting Edge	2.10 m (6 ft. 11 in.)	2.21 m (7 ft. 3 in.)	2.06 m (6 ft. 9 in.)	2.61 m (8 ft. 7 in.)

Lift Capacity with Quick-Coupler/Forks		1219-mm (48 in.) Tines			
Hydraulic Capacity		2632 kg (5,803 lb.)			
A¹	Maximum Height	2632 kg (5,803 lb.)			
B¹	Maximum Reach	4378 kg (9,651 lb.)			
C¹	At Ground Line	6057 kg (13,353 lb.)			
D¹	Below Ground Line	140 mm (5.5 in.)			

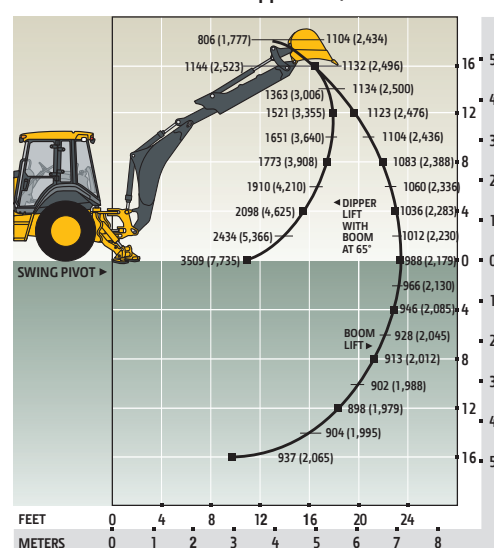
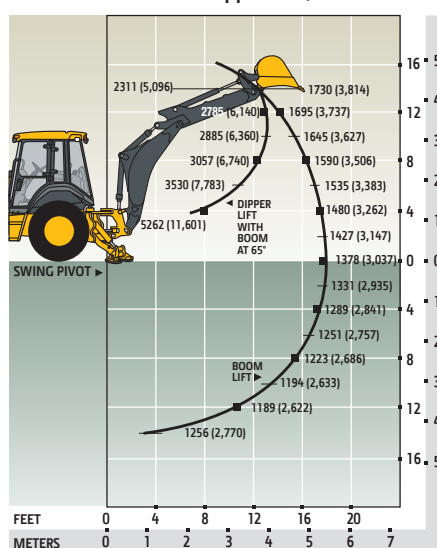
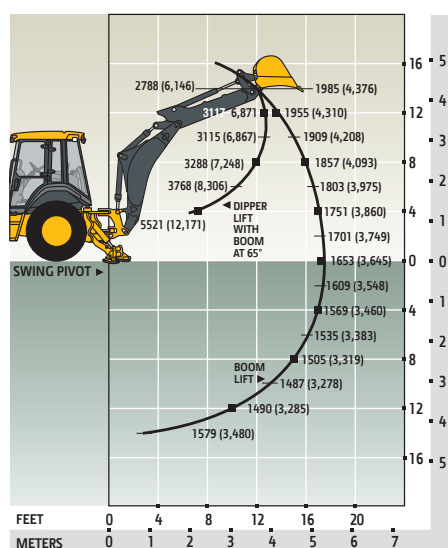


Lift capacities are over-end values in kg (lb.) according to SAE J31. Figures listed are 87% of the maximum lift force available. Base vehicle includes counterweight.

710K Backhoe with Standard Dipperstick

710K Backhoe with 1.37-m (4 ft. 6 in.)
Extendable Dipperstick, Retracted

710K Backhoe with 1.37-m (4 ft. 6 in.)
Extendable Dipperstick, Extended



Additional equipment: 310K

Key: ● Standard ▲ Optional or special

See your John Deere dealer for further information.

310K	Engine
●	Meets EPA Tier 3/EU Stage IIIA emissions
●	John Deere Model 4045HT054 — 4.5L, 65 kW (87 hp) net peak power, turbocharged, isolation mounted
●	Vertical spin-on engine oil filter
●	Vertical spin-on fuel filter with water separator
●	Oil-to-water engine oil cooler
●	Antifreeze, -40 deg. C (-40 deg. F)
●	Coolant recovery tank with low-level indicator
●	Foldout, hinged cooling system
●	Serpentine belt with automatic belt tensioner
●	Suction-type cooling fan
●	High ambient temperature engine cooling
●	Dual-element dry-type air cleaner
●	Muffler, under hood, with curved-end exhaust stack
●	Electronic fuel lift pump
●	Cold-start package
Powertrain	
●	PowerShift™ transmission: Torque converter with twist-grip Transmission Control Lever (TCL) and neutral safety switch interlock (1st through 4th gears)
●	Transmission oil cooler
●	Vertical spin-on transmission filter
▲	Transmission remote oil-sampling port
●	Differential lock, electric foot actuated, protection on/off
●	Planetary final drives
●	Power-assisted hydraulic service brakes (conform to ISO 3450): Inboard, wet multi-disc, self-adjusting and self-equalizing
●	Parking/emergency brake with electric switch control (conforms to ISO 3450): Spring applied, hydraulically released wet multi-disc / Independent of service brakes
●	Hydrostatic power steering with emergency manual mode
▲	Non-powered front axle
●	MFWD with open differential: Electric on/off control / Sealed axle
▲	MFWD with traction-control limited-slip differential: Electric on/off control / Sealed axle
●	Automatic MFWD braking (4th gear overdrive only)
▲	Rear wheel spacers for use with chains
▲	MFWD driveshaft guard
Backhoe	
●	Standard dipperstick, 4.34-m (14 ft. 3 in.) digging depth
▲	Extendable dipperstick, 1.07-m (3 ft. 6 in.) extension
●	ISO (Deere) 2-lever mechanical backhoe controls
▲	2-lever pilot controls with pattern-selection feature
●	Backhoe transport lock lever
●	Swing lock pin stored in operator's station
●	Stabilizers with 2-direction anti-drift valves
●	Pivoting stabilizers with reversible pads
●	Less bucket, with bucket pins
▲	Standard-duty backhoe bucket with lift loops
▲	Heavy-duty backhoe bucket with lift loops
▲	Backhoe couplers for John Deere, Case, and Cat buckets
▲	Auxiliary backhoe valve for swingers, thumbs, etc. with auxiliary plumbing
▲	Auxiliary backhoe valve for hammers and compactors with auxiliary plumbing

310K	Loader†
●	Loader bucket anti-spill (rollback)
●	Return-to-dig feature
●	Single-lever control with electric clutch disconnect
●	Bucket-level indicator
●	Loader boom service lock
▲	Auxiliary loader hydraulics with 2-lever control
▲	Hydraulic coupler for buckets, forks, etc.
●	Less bucket, with bucket pins
●	High-visibility loader arms
Hydraulic System	
●	106-L/m (28 gpm) single-gear pump, open-center system
●	Economy mode
●	Dedicated hydraulic reservoir
●	"O"-ring face-seal connectors
●	6-micron vertical spin-on filter
Electrical System	
●	12-volt system
●	90-amp alternator
●	Single battery with 190-min. reserve capacity and 950 CCA
▲	Dual batteries with 380-min. reserve capacity and 1,900 CCA
●	Positive terminal battery cover
●	Blade-type multi-fused circuits
●	By-pass start safety cover on starter
▲	Master disconnect switch
Lights	
●	Halogen lights (10), 32,500 candlepower each (4 front driving/working, 4 rear working, and 2 side docking)
●	Turn signal/flasher (2 front and 2 rear)
●	Rear stop and tail (2)
●	Rear reflectors (2)
Operator's Station	
●	Modular-design ROPS/FOPS (Level 2) canopy with molded roof (meets ISO 3449 and ISO 3471/SAE J1040): Isolation mounted
●	Left and right access
●	Slip-resistant steps and ergonomically located handholds (conform to SAE J1185)
●	Molded floor mats (with pilot controls only)
▲	Headliner (with cab only)
●	Coat hook
●	12-volt outlets (2)
●	Built-in cup holder
●	Built-in Operator's Manual storage compartment
●	Lockable right-side storage
▲	Lockable left-hand storage with cup holders
●	Interior rearview mirror
▲	Interior front-view mirror
▲	Outside rearview mirrors
●	Rotary-dial hand throttle
●	Suspended foot throttle
●	Horn
●	Seat belt, 76-mm (3 in.), with retractor
●	Key start switch with electric fuel shutoff
▲	Machine security
●	Engine coolant temperature gauge
●	Fuel gauge

310K	Operator's Station (continued)
●	Digital display of engine hours, engine rpm, and system voltage
●	Monitor system with audible and visual warnings: Engine air restriction / Low alternator voltage / Engine oil pressure / Hydraulic filter restriction / Parking brake on/off / Aftertreatment temperature / Transmission oil temperature / Fuel / Hour meter / Machine diagnostic information via 4-push-button/LCD operator interface
●	Canopy: Mechanical suspension deluxe vinyl swivel seat with lumbar adjustment and armrests (fully adjustable)
▲	Quarter Cab: Mechanical suspension deluxe vinyl swivel seat with lumbar adjustment and armrests (fully adjustable), front windshield, and windshield wiper (1 front)
▲	Cab with Dual Doors and Air Conditioning: Mechanical suspension deluxe fabric swivel seat with lumbar adjustment / Air conditioner (7.6-kW [26,000 Btu/h] output and CFC-free R134a refrigerant), and windshield wipers (1 rear and 1 front)
▲	Cab with Dual Doors: Mechanical suspension deluxe fabric swivel seat with lumbar adjustment / Tilt steering, infinitely adjustable / AM/FM/weather-band radio / Sun visor / Headliner, dome light, left and right cab doors, tinted safety glass, windshield wipers (1 rear and 1 front), front windshield washer, fresh-air intake, and heater/defroster/pressurizer (11.7-kW [40,000 Btu/h] heater)
▲	Ultimate Cab: Mechanical-suspension deluxe fabric swivel seat with lumbar adjustment / Tilt steering, infinitely adjustable / AM/FM/weather-band radio with CD player / Sun visor / Headliner, dome light, left and right cab doors, tinted safety glass, windshield wipers (1 rear and 1 front), front windshield washer, fresh-air intake, and heater/defroster/pressurizer (11.7-kW [40,000 Btu/h] heater) / Air conditioner (7.6-kW [26,000 Btu/h] output and CFC-free R134a refrigerant)
Overall Vehicle	
●	1-piece unitized construction mainframe
●	Vehicle tie-downs (2 front and 2 rear)
▲	Remote fluid-sampling ports
●	Remote grease bank for front axle
●	Front cover
▲	Heavy-duty front bumper
▲	204-kg (450 lb.) front counterweight
▲	340-kg (750 lb.) front counterweight
▲	454-kg (1,000 lb.) front counterweight
▲	567-kg (1,250 lb.) front counterweight
▲	Rubber grille bumpers
●	Fuel tank, 155.2 L (41 gal.), ground-level fueling
●	2-position easy-tilt hood
●	Extended grille frame
●	Removable toolbox with padlock hasp
●	Vandal protection for locking monitor, engine hood, toolbox, hydraulic reservoir, and fuel tank
●	Reverse warning alarm
●	Dent-resistant full-coverage rear fenders
▲	Boom-protection plate
●	JDLINK™ Ultimate wireless communication system (available in specific countries; see your dealer for details)

†See dealer for range of heavy-duty, multipurpose, and coupler buckets and forks.

Net engine power is with standard equipment including air cleaner, exhaust system, alternator, and cooling fan at test conditions specified per ISO 9249. No derating is required up to 1500-m (5,000 ft.) altitude for the 310K and up to 3050-m (10,000 ft.) for the 310K with optional altitude-compensating turbocharger. Specifications and design are subject to change without notice. Wherever applicable, specifications are in accordance with ISO standards. Except where otherwise noted, these specifications are based on a unit with 19.5L-24-in. 10PR (R4) tubeless rear and 11L-16-in. 12PR (F3) front tires, 0.77-m³ (1.00 cu. yd.) loader bucket, and 610-mm x 0.18-m³ (24 in. x 6.5 cu. ft.) backhoe bucket.

310SK / 410K

Key: ● Standard ▲ Optional or special

See your John Deere dealer for further information.

310SK	410K	Engine
●	●	Meets EPA Tier 3/EU Stage IIIA emissions
●		John Deere Model 4045HT054 — 4.5L, 71 kW (95 hp) net peak power, turbocharged, isolation mounted
	●	John Deere Model 4045HT054 — 4.5L, 75 kW (101 hp) net peak power, turbocharged, isolation mounted
●	●	Vertical spin-on engine oil filter
●	●	Vertical spin-on fuel filter with water separator
●	●	Oil-to-water engine oil cooler
●	●	Antifreeze, -40 deg. C (-40 deg. F)
●	●	Coolant recovery tank with low-level indicator
●	●	Foldout, hinged cooling system
●	●	Serpentine belt with automatic belt tensioner
●	●	Suction-type cooling fan
●	●	High ambient temperature engine cooling
●	●	Dual-element dry-type air cleaner
●	●	Muffler, under hood, with curved-end exhaust stack
▲	▲	Chrome exhaust extension
▲	▲	1,000-watt electric engine coolant heater
●	●	Electronic fuel lift pump
●	●	Cold-start package
Powertrain		
●	●	PowerShift™ transmission: Torque converter with twist-grip Transmission Control Lever (TCL) and neutral safety switch interlock (1st through 5th gears)
●	●	5th-gear overdrive
▲	▲	Autoshift transmission
●	●	Transmission oil cooler
●	●	Vertical spin-on transmission filter
▲	▲	Transmission remote oil-sampling port
●	●	Differential lock, electric foot actuated, protection on/off
●	●	Auto shutdown
●	●	Planetary final drives
●	●	Power-assisted hydraulic service brakes (conform to ISO 3450): Inboard, wet multi-disc, self-adjusting and self-equalizing
●	●	Parking/emergency brake with electric switch control (conforms to ISO 3450): Spring applied, hydraulically released wet multi-disc / Independent of service brakes
●	●	Hydrostatic power steering with emergency manual mode
▲	▲	Non-powered front axle
●	●	MFWD with traction-control limited-slip differential: Electric on/off control / Sealed axle
●	●	Automatic MFWD braking (4th and 5th gear over-drive only)
▲	▲	Rear wheel spacers for use with chains
▲	▲	MFWD driveshaft guard
Backhoe		
●		Standard dipperstick, 4.42-m (14 ft. 6 in.) digging depth
	●	Standard dipperstick, 4.83-m (15 ft. 10 in.) digging depth
▲		Extendable dipperstick, 1.07-m (3 ft. 6 in.) extension
▲	▲	Extendable dipperstick, 1.22-m (4 ft.) extension
▲	▲	Heavy-duty backhoe bucket cylinder
●	●	ISO (Deere) 2-lever mechanical backhoe controls
▲	▲	2-lever pilot controls with pattern-selection feature
●	●	Backhoe transport lock lever
●	●	Swing lock pin stored in operator's station
●	●	Stabilizers with 2-direction anti-drift valves
●	●	Pivoting stabilizers with reversible pads
▲	▲	Extended (long) stabilizers with reversible pads

310SK	410K	Backhoe (continued)
●	●	Less bucket, with bucket pins
▲	▲	Standard-duty backhoe bucket with lift loops
▲	▲	Heavy-duty backhoe bucket with lift loops
▲	▲	Severe-duty backhoe bucket with lift loops
▲	▲	Backhoe couplers for John Deere, Case, and Cat buckets
▲	▲	Auxiliary backhoe valve for swingers, thumbs, etc. with auxiliary plumbing
▲	▲	Auxiliary backhoe valve for hammers and compactors with auxiliary plumbing
▲	▲	Hydraulic thumb
Loader*		
●	●	Loader bucket anti-spill (rollback)
●	●	Return-to-dig feature
●	●	Single-lever control with electric clutch disconnect
●	●	Bucket-level indicator
●	●	Loader boom service lock
▲	▲	Auxiliary loader hydraulics with single control lever with EH auxiliary control (MFWD and clutch disconnect)
▲	▲	Hydraulic coupler for buckets, forks, etc.
●	●	Less bucket, with bucket pins
●	●	High-visibility loader arms
Hydraulic System		
●		136-L/m (36 gpm) tandem-gear pump with unloader, open-center system
	●	159-L/m (42 gpm) axial-piston pump, PCLS system
●	●	Auto idle
●	●	Economy mode
●	●	Dedicated hydraulic reservoir
●	●	"O"-ring face-seal connectors
●	●	6-micron vertical spin-on filter
Electrical System		
●	●	12-volt system
●	●	90-amp alternator
●	●	Single battery with 190-min. reserve capacity and 950 CCA
▲	▲	Dual batteries with 380-min. reserve capacity and 1,900 CCA
●	●	Positive terminal battery cover
●	●	Blade-type multi-fused circuits
●	●	By-pass start safety cover on starter
▲	▲	Master disconnect switch
Lights		
●	●	Halogen lights (10), 32,500 candlepower each (4 front driving/working, 4 rear working, and 2 side docking)
●	●	Turn signal/flashing (2 front and 2 rear)
●	●	Rear stop and tail (2)
●	●	Rear reflectors (2)
Operator's Station		
●	●	Modular-design ROPS/FOPS (Level 2) canopy with molded roof (meets ISO 3449 and ISO 3471/SAE J1040): Isolation mounted
●	●	Left and right access
●	●	Slip-resistant steps and ergonomically located handholds (conform to SAE J185)
●	●	Molded floor mats (with pilot controls only)
▲	▲	Headliner (with cab only)
●	●	Coat hook
●	●	12-volt outlets (2)
●	●	Built-in cup holder
●	●	Built-in Operator's Manual storage compartment
●	●	Lockable right-side storage
▲	▲	Lockable left-hand storage with cup holders

310SK	410K	Operator's Station (continued)
●	●	Interior rearview mirror
▲	▲	Interior front-view mirror
▲	▲	Outside rearview mirrors
●	●	Rotary-dial hand throttle
●	●	Suspended foot throttle
●	●	Horn
●	●	Seat belt, 76-mm (3 in.), with retractor
●	●	Keyless start
●	●	Machine security
●	●	Engine coolant temperature gauge
●	●	Transmission oil-temperature gauge
●	●	Fuel gauge
●	●	Digital display of engine hours, engine rpm, and system voltage
●	●	Sealed-switch module
●	●	Monitor system with audible and visual warnings: Engine air restriction / Low alternator voltage / Engine oil pressure / Hydraulic filter restriction / Parking brake on/off / Aftertreatment temperature / Transmission oil temperature / Fuel / Hour meter / Machine diagnostic information via 4-push-button/LCD operator interface
●	●	Canopy: Mechanical suspension deluxe vinyl swivel seat with lumbar adjustment and armrests (fully adjustable)
▲	▲	Cab with Dual Doors: Mechanical suspension deluxe fabric swivel seat with lumbar adjustment / Tilt steering, infinitely adjustable / AM/FM/weather-band radio / Sun visor / Headliner, dome light, left and right cab doors, tinted safety glass, windshield wipers (1 rear and 1 front), front windshield washer, fresh-air intake, and heater/defroster/pressurizer (11.7-kW [40,000 Btu/h] heater)
▲	▲	Ultimate Cab: Air-suspension deluxe fabric swivel seat with lumbar adjustment / Tilt steering, infinitely adjustable / AM/FM/weather-band radio with CD player / Sun visor / Headliner, dome light, left and right cab doors, tinted safety glass, windshield wipers (1 rear and 1 front), front windshield washer, fresh-air intake, and heater/defroster/pressurizer (11.7-kW [40,000 Btu/h] heater) / Air conditioner (7.6-kW [26,000 Btu/h] output and CFC-free R134a refrigerant)
Overall Vehicle		
●	●	1-piece unitized construction mainframe
●	●	Vehicle tie-downs (2 front and 2 rear)
▲	▲	Remote fluid-sampling ports
●	●	Remote grease bank for front axle
●	●	Front cover
▲	▲	Heavy-duty front bumper
▲	▲	204-kg (450 lb.) front counterweight
▲	▲	340-kg (750 lb.) front counterweight
▲	▲	454-kg (1,000 lb.) front counterweight
▲	▲	567-kg (1,250 lb.) front counterweight
▲	▲	Rubber grille bumpers
●	●	Fuel tank, 155.2 L (41 gal.), ground-level fueling
●	●	2-position easy-tilt hood
●	●	Extended grille frame
●	●	Removable toolbox with padlock hasp
●	●	Vandal protection for locking monitor, engine hood, toolbox, hydraulic reservoir, and fuel tank
●	●	Reverse warning alarm
●	●	Dent-resistant full-coverage rear fenders
●	●	JDLINK™ Ultimate wireless communication system (available in specific countries; see your dealer for details)

*See dealer for range of heavy-duty, multipurpose, and coupler buckets and forks.

Net engine power is with standard equipment including air cleaner, exhaust system, alternator, and cooling fan at test conditions specified per ISO 9249. No derating is required up to 3050-m (10,000 ft.) altitude. Specifications and design are subject to change without notice. Wherever applicable, specifications are in accordance with ISO standards. Except where otherwise noted, these specifications are based on 310SK and 410K units with 610-mm x 0.21-m³ (24 in. x 7.5 cu. ft.) backhoe buckets; a 310SK unit with 19.5L-24-in. 10PR (R4) tubeless rear and 11L-16-in. 12PR (F3) front tires and 0.86-m³ (1.12 cu. yd.) loader bucket; and a 410K unit with 21L-24-in. 10PR (R4) tubeless rear and 14.5/75-16.1-in. 10PR (F3) front tires and 1.00-m³ (1.31 cu. yd.) loader bucket.

Additional equipment: 315SK

Key: ● Standard ▲ Optional or special

See your John Deere dealer for further information.

315SK Engine
● Meets EPA Tier 3/EU Stage IIIA emissions
● John Deere Model 4045HT054 — 4.5L, 71 kW (95 hp) net peak power, turbocharged, isolation mounted
● Vertical spin-on engine oil filter
● Vertical spin-on fuel filter with water separator
● Oil-to-water engine oil cooler
● Antifreeze, -40 deg. C (-40 deg. F)
● Coolant recovery tank
● Serpentine belt with automatic belt tensioner
● Suction-type cooling fan
● Dual-element dry-type air cleaner
● Muffler, under hood, with curved-end exhaust stack
● Electronic fuel lift pump
Powertrain
● PowerShift™ transmission: Torque converter with twist-grip Transmission Control Lever (TCL) and neutral safety switch interlock (1st through 5th gears)
● 5th-gear overdrive
▲ Auto shift
● Auto shutdown
● Transmission oil cooler
● Vertical spin-on transmission filter
▲ Transmission remote oil-sampling port
● Differential lock, electric foot actuated
● Planetary final drives
● Power-assisted hydraulic service brakes (conform to ISO 3450): Inboard, wet multi-disc, self-adjusting and self-equalizing
● Parking/emergency brake with electric switch control (conforms to ISO 3450): Spring applied, hydraulically released wet multi-disc / Independent of service brakes
● Hydrostatic power steering with emergency manual mode
▲ Non-powered front axle
● MFWD with traction-control limited-slip differential: Electric on/off control / Sealed axle
▲ Rear wheel spacers for use with chains
▲ MFWD driveshaft guard
Backhoe
● Standard dipperstick, 4.29-m (14 ft. 1 in.) digging depth
▲ Extendable dipperstick, 1.07-m (3 ft. 6 in.) extension
▲ Heavy-duty backhoe bucket cylinder option
● ISO (Deere) 2-lever mechanical backhoe controls
● Backhoe transport lock lever
● Swing lock pin stored in operator's station
● Stabilizers with 2-direction anti-drift valves
● Less bucket, with bucket pins
▲ Standard-duty backhoe bucket with lift loops
▲ Heavy-duty backhoe bucket with lift loops
▲ Severe-duty backhoe bucket with lift loops

315SK Backhoe (continued)
▲ Auxiliary backhoe valve for swingers, thumbs, etc. with auxiliary plumbing
▲ Auxiliary backhoe valve for hammers and compactors with auxiliary plumbing
Loader†
● Loader bucket anti-spill (rollback)
● Return-to-dig feature
● Single-lever control with electric clutch disconnect
● Bucket-level indicator
● Loader boom service lock
▲ Ride control
▲ Auxiliary loader hydraulics with 2-lever control
▲ Front loader hydraulic coupler for buckets, forks, etc.
● Less bucket, with bucket pins
● High-visibility loader arms
Hydraulic System
● 136-L/m (36 gpm) tandem gear pump, open-center system
● Auto idle
● Economy mode
● Dedicated hydraulic reservoir
● "O"-ring face-seal connectors
● 6-micron vertical spin-on filter
Electrical System
● 12-volt system
● 90-amp alternator
● Single battery with 190-min. reserve capacity and 950 CCA
▲ Dual batteries with 380-min. reserve capacity and 1,900 CCA
● Positive terminal battery cover
● Blade-type multi-fused circuits
● By-pass start safety cover on starter
▲ Master disconnect switch
Lights
● Halogen lights (10), 32,500 candlepower each (4 front driving/working, 4 rear working, and 2 side docking)
● Turn signal/flashing (2 front and 2 rear)
● Rear stop and tail (2)
● Rear reflectors (2)
Operator's Station
● Modular-design ROPS/FOPS Level 2, cab with molded roof (meets ISO 3449 and ISO3471 / SAE J1040): Isolation mounted
● Left and right access
● Slip-resistant steps and ergonomically located handholds (conform to SAE J1185)
● Molded floor mats
● Headliner
● Coat hook
● Built-in beverage holders
● Built-in Operator's Manual storage compartment
● Lockable right-side storage
▲ Lockable left-hand storage with cup holders
● Interior rearview mirror

315SK Operator's Station (continued)
▲ Outside rearview mirrors
● Rotary-dial hand throttle
● Suspended foot throttle
● Tilt steering
● Horn
● Seat belt, 76-mm (3 in.), with retractor
● Sealed-switch module
● Keyless start
● Machine security (enabled through monitor)
● Engine coolant temperature gauge
● Oil-temperature gauge
● Fuel gauge
● Digital display of engine hours, engine rpm, and system voltage
● Monitor system with audible and visual warnings: Engine air restriction / Low alternator voltage / Engine oil pressure / Hydraulic filter restriction / Parking brake on/off / Seat belt / Machine diagnostic information via 4-push-button/LCD operator interface
● Mechanical suspension deluxe fabric swivel seat with lumbar adjustment and armrests (fully adjustable)
▲ Air-suspension deluxe fabric swivel seat with lumbar adjustment
● Seat belt, 76 mm (3 in.), with retractor
● Cab: Headliner, dome light, left and right cab doors, tinted safety glass, windshield wiper (1 rear and 1 front), front windshield wiper, fresh-air intake, heater/defroster/pressurizer (11.7-kW [40,000 Btu/h] heater), and 12-volt outlets (2)
▲ Air conditioner (7.6 kW [26,000 Btu/h] output and CFC-free R134a refrigerant)
● AM/FM/weather-band radio
Overall Vehicle
● 1-piece unitized construction mainframe
● Vehicle tie-downs (2 front and 2 rear)
● Remote grease bank for front axle
● Heavy-duty front bumper
▲ 204-kg (450 lb.) front counterweight
▲ 340-kg (750 lb.) front counterweight
▲ 454-kg (1,000 lb.) front counterweight
▲ 567-kg (1,250 lb.) front counterweight
▲ Rubber grille bumpers
● Fuel tank, 155 L (41 gal.), ground-level fueling
● 2-position easy-tilt hood
● Extended grille frame
● Removable toolbox with padlock hasp
● Vandal protection for locking monitor, engine hood, toolbox, hydraulic reservoir, and fuel tank
● Reverse warning alarm
● Dent-resistant full-coverage rear fenders
● JDLink™ Ultimate wireless communication system (available in specific countries; see your dealer for details)

†See dealer for range of heavy-duty, multipurpose, and coupler buckets and forks.

Net engine power is with standard equipment including air cleaner, exhaust system, alternator, and cooling fan at test conditions specified per ISO 9249. No derating is required up to 3050-m (10,000 ft.) altitude. Specifications and design subject to change without notice. Wherever applicable, specifications are in accordance with SAE standards. Except where otherwise noted, these specifications are based on a unit with 19.5L24 R-4 (10) rear and 11L-16 SL F-3 (12) front tires, 1.00-m³ (1.31 cu. yd.) loader bucket, and 610-mm x 0.21-m³ (24 in. x 7.5 cu. ft.) backhoe bucket.

710K

Key: ● Standard ▲ Optional or special

See your John Deere dealer for further information.

710K	Engine
●	Meets EPA Tier 3/EU Stage IIIA emissions
●	John Deere Model 6068HT067 — 6.8L, 94 kW (126 hp) net peak power, variable-geometry turbocharger, isolation mounted
●	Vertical spin-on engine oil filter
●	Vertical spin-on fuel filter with water separator
●	Oil-to-water engine oil cooler
●	Antifreeze, -40 deg. C (-40 deg. F)
●	Coolant recovery tank with low-level indicator
●	Foldout, hinged cooling system
●	Serpentine belt with automatic belt tensioner
●	Suction-type cooling fan
●	High ambient temperature engine cooling
●	Dual-element dry-type air cleaner
●	Muffler, under hood, with curved-end exhaust stack
▲	Chrome exhaust extension
▲	1,000-watt electric engine coolant heater
●	Electronic fuel lift pump
●	Cold-start package
Powertrain	
●	PowerShift™ transmission: Torque converter with twist-grip Transmission Control Lever (TCL) and neutral safety switch interlock (1st through 4th gears)
●	Transmission oil cooler
●	Vertical spin-on transmission filter
▲	Transmission remote oil-sampling port
●	Differential lock, electric foot actuated
●	Auto shutdown
●	Planetary final drives
●	Full-power hydraulic service brakes (conform to ISO 3450): Inboard, wet multi-disc, self-adjusting and self-equalizing
●	Parking/emergency brake with electric switch control (conforms to ISO 3450): Spring applied, hydraulically released wet multi-disc / Independent of service brakes
●	Hydrostatic power steering with emergency manual mode
▲	Non-powered front axle
●	MFWD with traction-control limited-slip differential: Electric on/off control / Sealed axle
●	Automatic MFWD braking (4th gear only)
▲	Rear wheel spacers for use with chains
Backhoe	
●	Standard dipperstick, 5.44-m (17 ft. 10 in.) digging depth
▲	Extendable dipperstick, 1.37-m (4 ft. 6 in.) extension
▲	ISO (Deere) 2-lever mechanical backhoe controls
●	2-lever pilot controls with pattern-selection feature
●	Backhoe transport lock lever
●	Swing lock pin stored in operator's station
●	Stabilizers with 2-direction anti-drift valves
●	Pivoting stabilizers with reversible pads

710K	Backhoe (continued)
●	Less bucket, with bucket pins
▲	Heavy-duty backhoe bucket with lift loops
▲	Severe-duty backhoe bucket with lift loops
▲	Auxiliary backhoe valve for swingers, thumbs, etc. with auxiliary plumbing
▲	Auxiliary backhoe valve for hammers and compactors with auxiliary plumbing
Loader†	
●	Loader bucket anti-spill (rollback)
●	Return-to-dig feature
●	Single-lever control with electric clutch disconnect
●	Bucket-level indicator
●	Loader boom service lock
▲	Auxiliary loader hydraulics with single control lever with EH auxiliary control (MFWD and clutch disconnect)
▲	Hydraulic coupler for buckets, forks, etc.
●	Less bucket, with bucket pins
●	Ride control
Hydraulic System	
●	197-L/m (52 gpm) axial-piston pump, PCLS system
●	Auto idle
●	Economy mode
●	Dedicated hydraulic reservoir
●	"O"-ring face-seal connectors
●	6-micron vertical spin-on filter
Electrical System	
●	12-volt system
●	120-amp alternator
●	Dual batteries with 380-min. reserve capacity and 1,900 CCA
●	Positive terminal battery cover
●	Blade-type multi-fused circuits
●	By-pass start safety cover on starter
▲	Master disconnect switch
Lights	
●	Halogen lights (10), 32,500 candlepower each (4 front driving/working, 4 rear working, and 2 side docking)
●	Turn signal/flasher (2 front and 2 rear)
●	Rear stop and tail (2)
●	Rear reflectors (2)
Operator's Station	
●	Modular-design ROPS/FOPS (Level 2) canopy with molded roof (meets ISO 3449 and ISO 3471/SAE J1040): Isolation mounted
●	Left and right access
●	Slip-resistant steps and ergonomically located handholds (conform to SAE J185)
●	Molded floor mats (with pilot controls only)
▲	Headliner (with cab only)
●	Coat hook
●	12-volt outlets (2)
●	Built-in cup holder
●	Built-in Operator's Manual storage compartment

710K	Operator's Station (continued)
●	Lockable right-side storage
▲	Lockable left-hand storage with cup holders
●	Interior rearview mirror
▲	Interior front-view mirror
▲	Outside rearview mirrors
●	Rotary-dial hand throttle
●	Suspended foot throttle
●	Horn
●	Seat belt, 76-mm (3 in.), with retractor
●	Keyless start
●	Machine security
●	Engine coolant temperature gauge
●	Transmission oil-temperature gauge
●	Fuel gauge
●	Digital display of engine hours, engine rpm, and system voltage
●	Sealed-switch module
●	Monitor system with audible and visual warnings: Engine air restriction / Low alternator voltage / Engine oil pressure / Hydraulic filter restriction / Parking brake on/off / Aftertreatment temperature / Transmission oil temperature / Fuel / Hour meter / Machine diagnostic information via 4-push-button/LCD operator interface
●	Canopy: Mechanical suspension deluxe vinyl swivel seat with lumbar adjustment and armrests (fully adjustable)
▲	Ultimate Cab: Air-suspension deluxe fabric swivel seat with lumbar adjustment / Tilt steering, infinitely adjustable / AM/FM/weather-band radio with CD player / Sun visor / Headliner, dome light, left and right cab doors, tinted safety glass, windshield wipers (1 rear and 1 front), front windshield washer, fresh-air intake, and heater/defroster/pressurizer (11.7-kW [40,000 Btu/h] heater) / Air conditioner (7.6-kW [26,000 Btu/h] output and CFC-free R134a refrigerant)
Overall Vehicle	
●	1-piece unitized construction mainframe
●	Vehicle tie-downs (2 front and 2 rear)
▲	Remote fluid-sampling ports
●	Remote grease bank for front axle
●	272-kg (600 lb.) front counterweight
▲	635-kg (1,400 lb.) front counterweight
●	Fuel tank, 261.2 L (69 gal.), ground-level fueling
●	2-position easy-tilt hood
●	Extended grille frame
●	Removable toolbox with padlock hasp
●	Vandal protection for locking monitor, engine hood, toolbox, hydraulic reservoir, and fuel tank
●	Reverse warning alarm
●	Dent-resistant full-coverage rear fenders
●	JDLink™ Ultimate wireless communication system (available in specific countries; see your dealer for details)

†See dealer for range of heavy-duty, multipurpose, and coupler buckets and forks.

Net engine power is with standard equipment including air cleaner, exhaust system, alternator, and cooling fan at test conditions specified per ISO 9249. No derating is required up to 3050-m (10,000 ft.). Specifications and design are subject to change without notice. Wherever applicable, specifications are in accordance with ISO standards. Except where otherwise noted, these specifications are based on a unit with 21L-28-in. 14PR (R4) tubeless rear and 14.5/75-16.1-in. 10PR (F3) front tires, 1.24-m³ (1.62 cu. yd.) loader bucket, and 610-mm x 0.31-m³ (24 in. X 11.1 cu. ft.) backhoe bucket.

