



# B320 Bulldozer



<b>Engine</b>	Chongqing Cummins
<b>Gross Power</b>	257 kW (350 hp) @ 2,000 rpm
<b>Net Power</b>	235 kW (320 hp) @ 2,000 rpm
<b>Maximum Torque</b>	1400 N·m
<b>Blade Capacity</b>	10.4 m <sup>3</sup>
<b>Operating Weight</b>	39,700 kg

# B320

## Bulldozer



### ENGINE

Emission Regulation	Tier 2 / Stage II
Make	Chongqing Cummins
Gross Power	257 kW (350 hp) @ 2,000 rpm
Net Power	235 kW (320 hp) @ 2,000 rpm
Peak Torque	1,509 N · m @ 2,000 rpm
Number of Cylinders	6
Aspiration	Turbo air-to-air aftercooled
Displacement	14 L

### TRANSMISSION

Transmission Type	Powershift
Maximum Travel Speed, fwd	11.8 km/h
Maximum Travel Speed, rev	14.3 km/h
Number of Speeds, fwd	3
Number of Speeds, rev	3

### ELECTRICAL SYSTEM

System Voltage	24 V
----------------	------

### UNDERCARRIAGE

Shoe Width	560 mm
Number of Shoes per Side	41
Number of Upper Rollers per Side	2
Number of Bottom Rollers per Side	7
Shoe Ground Pressure	105 kPa
Track on Ground	3,150 mm

### DIMENSIONS

Overall Length	8,995 mm
Height to Top of Cab	3,590 mm
Ground Clearance	500 mm

### OPERATING WEIGHTS

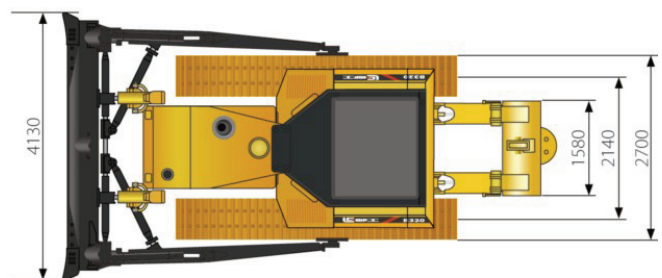
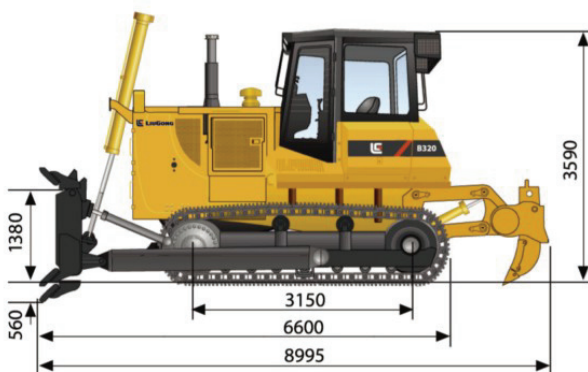
Operating Weight with Ballast	39,700 kg
-------------------------------	-----------

### BLADE PERFORMANCE

Blade Type (referenced)	straight
Blade Capacity (referenced)	10.4 m <sup>3</sup>
Blade Width	4,130 mm
Blade Height	1,529 mm
Blade Depth below Ground	560 mm
Blade Lift above Ground	1,380 mm
Blade Tilt	1,000 mm

### SERVICE CAPACITIES

Fuel Tank	600 L
Engine Oil	47 L
Cooling System	85 L
Hydraulic System Total	340 L
Transmission and Torque Converter	185 L
Final Drives, each	110 L



Unit:mm

### Guangxi Liugong Machinery Co., Ltd.

No. 1 Liutai Road, Liuzhou, Guangxi 545007, PR China  
T: +86 772 388 6124 E: overseas@liugong.com  
[www.liugong.com](http://www.liugong.com)

08/2012 Designed by LiuGong

Specifications and designs are subject to change without notice. Machines shown may include optional equipment.