



416 Motor Grader



Engine	Cummins
Net Power	119 kW (161 hp) @ 2,200 rpm
Blade Width	3,960 mm
Maximum Speed	39.5 km/h
Draw Bar Pull	81.6 kN
Operating Weight	13,800 kg

416 Motor Grader



ENGINE

Emission Regulation	Tier 2 / Stage II
Make	Cummins
Gross Power	132 kW (177 hp) @ 2,200 rpm
Net Power	119 kW (161 hp) @ 2,200 rpm
Peak Torque	770 N · m @ 1,500 rpm
Torque Rise %	34 %
Number of Cylinders	6
Aspiration	turbo air-to-air aftercooled

TRANSMISSION

Transmission Type	Power shift
Transmission Configuration	6f / 3r
Torque Converter	three – member single turbine
Maximum Travel Speed, fwd	38 km/h
Maximum Travel Speed, rev	24.4 km/h
Number of Speeds, fwd	6
Number of Speeds, rev	3

AXLES

Differential Type	limited slip
Final Drive Type	chain drive
Axle Oscillation	15°
Front Axle Type	all welded steel frame
Front Axle, Wheel Lean Angle	left / right 17°

STEERING

Steering Configuration	load sensor steering gear
Steering Relief Pressure	17 MPa
Minimum Turning Radius	7,800 mm
Steering Angle	±45°
Frame Articulation Angle	±20°

BRAKES

Service Brake Type	dry drum
Service Brake Location	rear axle

TIRES

Tire Size	17.5 - 25
-----------	-----------

HYDRAULIC SYSTEM

Main Pump Type	gear
Main Relief Pressure	18 MPa
Pilot Pump Flow	126 L/min

WORKING CAPACITIES

Maximum Draw Pull	81.6 kN
Cutting Pressure	6,800 kg

TANDEM DRIVE PERFORMANCE

Height	600 mm
Width	210 mm
Center Distance	1,538 mm
Oscillating Angle	±15°

MOLDBOARD PERFORMANCE

Bank Cut Angle	40~70°
Moldboard Lift Above Ground	450 mm
Moldboard Side Shift, right / left	725 / 675 mm
Maximum Sloping Angle	90°
Cutting Depth	550 mm
Circle Rotation	360°
Circle Diameter	1,455 mm
Circle Thickness	135 mm

DIMENSIONS

Wheelbase	6,230 mm
Overall Length	8,790 mm
Overall Height with Cab	3,438 mm
Clearance under Front Axle	577 mm
Moldboard Standard Length	3,960 mm
Moldboard Standard Thickness	19 mm
Moldboard Standard Height	610 mm

OPERATING WEIGHTS

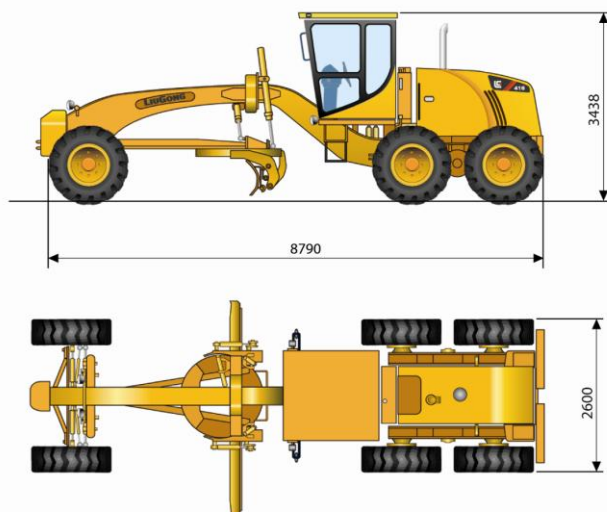
Operating Weight	13,800 kg
On Front Wheels	3,925 kg
On Rear Wheels	9,875 kg

SERVICE CAPACITIES

Fuel Tank	230 L
Engine Oil	17 L
Cooling System	40 L
Hydraulic Reservoir	186 L
Transmission And Torque Converter	45 L
Tandems, Each	28 L

OPTIONAL EQUIPMENT

- Rear Ripper
- Front Dozer
- Automatic Leveling System
- ROPS / FOPS Cab
- Rotary Beacon



Unit: mm

Liugong Machinery Australia Pty Ltd.

7 Rachael Close, Silverwater, NSW 2128, Australia

T: +61 2 9748 1200 E: liugong@liugongaustralia.com

www.liugongaustralia.com

Specifications and designs are subject to change without notice. Machines shown may include optional equipment.