

LIUGONG CONSTRUCTION MACHINERY N.A., LLC  
20823 Park Row  
Katy, Texas 77449 USA  
T: +1 281-579-8882  
F: +1 281-579-8388  
[info@liugongna.com](mailto:info@liugongna.com)



<b>Engine</b>	Cummins QSB6.7
<b>Gross Power</b>	160 hp (119 kW) @ 2,200 rpm
<b>Peak Net Power</b>	157 hp (116 kW) @ 2,000 rpm
<b>Operating Weight</b>	29,983 lbs (13600 kg)
<b>Standard Bucket Size</b>	2.5 yd <sup>3</sup> (1.9 m <sup>3</sup> )
<b>Standard Bucket Breakout Force</b>	23,605 lbs (105 kN)
<b>Standard Dump Clearance</b>	9'8" (2950 mm)

# 835III Wheel Loader



## ENGINE

Tier	EPA Tier III
Make & Model	Cummins QSB6.7
Gross power	160 hp (119 kW) @ 2,200 rpm
Peak net power	157 hp (116 kW) @ 2,000 rpm
Peak torque	540 lbs/ft (732 Nm) @ 1,400 rpm
Torque rise, pct	41.7%
Number of cylinders	6
Aspiration	Turbo air-to-air aftercooled

## TRANSMISSION

Transmission type	Automatic power shift
Transmission configuration	Counter shaft
Torque converter	3 element - single stage, single phase
Max travel speed, fwd	23.6 mph (38 km/h)
Max travel speed, rev	14.3 mph (23 km/h)
No. of speeds, fwd	4
No. of speeds, rev	3

## AXLES

Differential front type	Limited slip standard
Differential rear type	Limited slip standard
Axle oscillation	±11°

## STEERING

Steering configuration	Articulated
Steering relief pressure	2,175 psi (104 kPa)

## BRAKES

Service brake type	Wet multi disc
Service brake actuation	Hydraulic
Parking brake type	Shoe/drum
Parking brake actuation	Spring apply hydraulic release

## HYDRAULIC SYSTEM

Main pump type	Vane
Main relief pressure	3,000 psi (144 kPa)
Raise	6 sec
Dump time	2 sec
Float down time	3.6 sec
Fastest total cycle time	12 sec

## LOADER ARM PERFORMANCE

Tipping load	22,928 lbs (10,400 kg)
Full turn tipping load	19,621 lbs (8,900 kg)
Bucket breakout force	23,605 lbs (105kN)
Max dump angle at full height	45°
Dump clearance at full height discharge	9'8" (2950 mm)
Dump reach at full height discharge	3'7" (1100 mm)
Max hinge pin height	13' (3960 mm)
Max digging depth, bucket level	1" (25 mm)
Bucket rollback at ground level	45°
Bucket rollback at carry	51°
Bucket rollback at max height	52.9°

## BUCKET PERFORMANCE

Reference Bucket	2.5 yd <sup>3</sup> (1.9 m <sup>3</sup> ) Quick change bucket
------------------	---

## DIMENSIONS

Length with bucket down	24'8" (7500 mm)
Width over tires	8'3" (2510 mm)
Wheelbase	9'8" (2950 mm)
Wheel tread	6'5" (1950 mm)
Ground clearance	15" (370 mm)
Turn angle, either side	40°
Rear angle of departure	31°
Turning radius, outside of tire	17'5" (5300 mm)
Turning radius, center of tire	16'8" (5070 mm)
Turning radius, bucket carry	19'2"

## TIRES

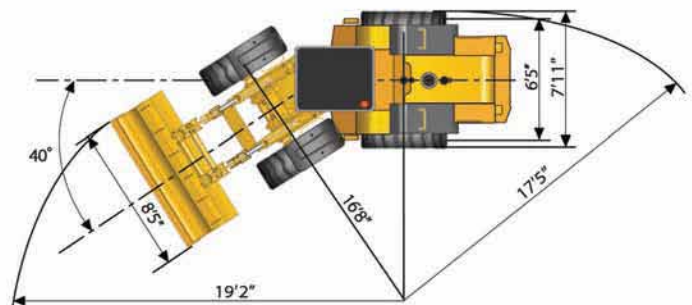
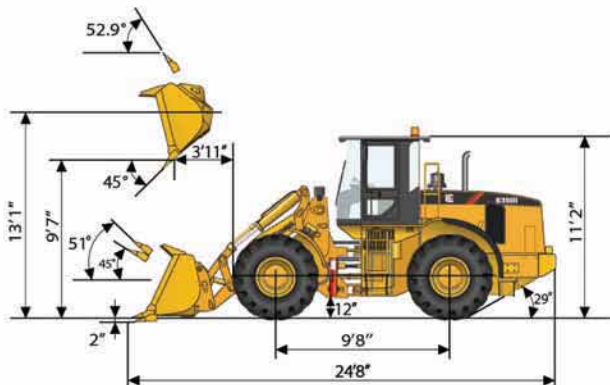
Tire size	20.5 R 25
-----------	-----------

## OPERATING WEIGHTS

Operating Weight	29,983 lbs (13,600 kg)
------------------	------------------------

## SERVICE CAPACITIES

Fuel tank	63.4 gal (240 L)
Engine oil	4.0 gal (15 L)
Cooling system	9.2 gal (34.8 L)
Hydraulic reservoir	39.6 gal (150 L)
Transmission and torque converter	7.4 gal (28 L)
Axles, each	7.4 gal (28 L)



\*Specifications and designs are subject to change without notice. Machines shown may include optional equipment.