



842 III Wheel Loader



Engine	Cummins
Gross Power	144 kW (193 hp) @ 2,200 rpm
Net Power	135 kW (181 hp) @ 2,200 rpm
Operating Weight	15,000 kg
Standard Bucket Size	2.7 m ³
Standard Breakout Force	136 kN
Standard Dump Clearance	2,981 mm

842 III Wheel Loader



ENGINE

Emission Regulation	Tier 3 / Stage IIIA
Make	Cummins
Gross Power	144 kW (193 hp) @ 2,200 rpm
Net Power	135 kW (181 hp) @ 2,200 rpm
Peak Torque	931 N · m @ 1,400 rpm
Displacement	6.7 L
Number of Cylinders	6
Aspiration	turbo air - to - air aftercooled

TRANSMISSION

Transmission Type	Power shift
Transmission Configuration	countershaft
Torque Converter	single - stage, three - element
Maximum Travel Speed, fwd	42.2 km/h
Maximum Travel Speed, rev	27.1 km/h
Number of Speeds, fwd	4
Number of Speeds, rev	3

AXLES

Differential Front Type	limited slip
Differential Rear Type	limited slip
Axle Oscillation	±12°

STEERING

Steering Configuration	articulated
Steering Relief Pressure	172 MPa

BRAKES

Service Brake Type	wet multi disc
Service Brake Actuation	hydraulic
Parking Brake Type	auto and manual electronic controlled
Parking Brake Actuation	spring apply; hydraulic release

HYDRAULIC SYSTEM

Main Pump Type	vane
Main Relief Pressure	20 MPa
Raise	5.8 s
Dump Time	1.1 s
Float Down Time	3.8 s
Fastest Total Cycle Time	10.7 s

LOADER ARM PERFORMANCE

Tipping Load - Straight	11,500 kg
Tipping Load - Full Turn	10,061 kg
Bucket Breakout Force	136 kN
Maximum Dump Angle at Full Height	45°
Dump Clearance at Full Height Discharge	2,981 mm
Dump Reach at Full Height Discharge	1,007 mm
Maximum Hinge Pin Height	3,907 mm
Maximum Digging Depth, Bucket Level	32 mm
Bucket Rollback at Ground Level	43°
Bucket Rollback at Carry	49°
Bucket Rollback at Maximum Height	60°

BUCKET PERFORMANCE

Reference Bucket	2.7 m ³
------------------	--------------------

DIMENSIONS

Length with Bucket Down	7,620 mm
Width Over Tires	2,479 mm
Wheelbase	3,000 mm
Wheel Tread	1,950 mm
Ground Clearance	410 mm
Turn Angle, Either Side	40°
Rear Angle of Departure	30°
Turning Radius, Outside of Tire	5,360 mm
Turning Radius, Center of Tire	5,100 mm
Turning Radius, Bucket Carry	6,029 mm

TIRES

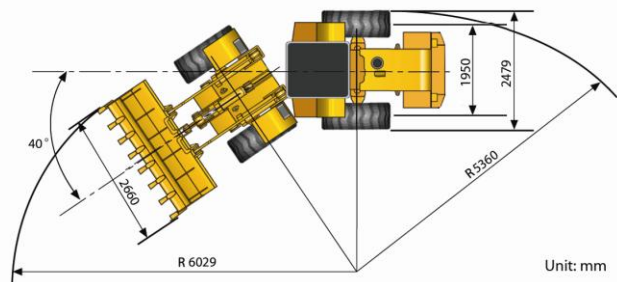
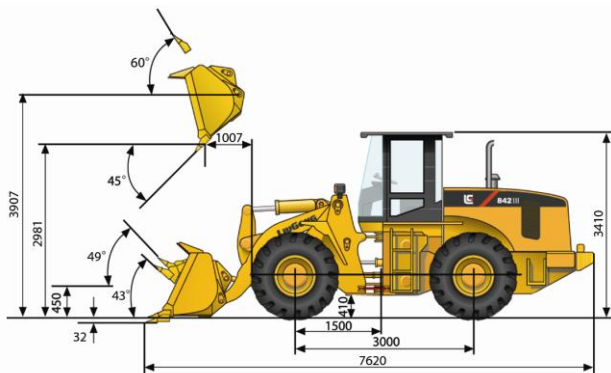
Tire Size	20.5 R 25
-----------	-----------

OPERATING WEIGHTS

Operating Weight	15,000 kg
------------------	-----------

SERVICE CAPACITIES

Fuel Tank	240 L
Engine Oil	22 L
Cooling System	35 L
Hydraulic Reservoir	240 L
Transmission and Torque Converter	45 L
Axles, each	35 L



Liugong Machinery Australia Pty Ltd.

7 Rachael Close, Silverwater, NSW 2128, Australia

T: +61 2 9748 1200 E: liugong@liugongaustralia.com

www.liugongaustralia.com

Specifications and designs are subject to change without notice. Machines shown may include optional equipment.