

LIUGONG CONSTRUCTION MACHINERY N.A., LLC
20823 Park Row
Katy, Texas 77449 USA
T: +1 281-579-8882
F: +1 281-579-8388
info@liugongna.com



Engine	Cummins QSM11-C335
Gross Power	335 hp (250 kW) @ 2,100 rpm
Peak Net Power	350 hp (260 kW) @ 1,800 rpm
Operating Weight	66,139 lbs (30,000 kg)
Standard Bucket Size	6.8 yd ³ (5.2 m ³)
Standard Bucket Breakout Force	58,450 lbs (26,512 kg)
Standard Dump Clearance	10'10" (3,300 mm)

888III

Wheel Loader



ENGINE

Tier	EPA Tier III
Make & Model	Cummins QSM11-C335
Gross power	335 hp (250 kW) @ 2,100 rpm
Peak torque	1235 lbs/ft (1674 N.m) @ 1,200 rpm
Peak net power	350 hp (260 kW) @ 1,800 rpm
Torque rise, pct	47.2%
Number of cylinders	6
Aspiration	Turbo air-to-air aftercooled

TRANSMISSION

Transmission type	Automatic, power shift
Transmission configuration	Countershaft
Torque converter	3 element - single stage, single phase
Max travel speed, fwd	22.4 mph (36 km/h)
Max travel speed, rev	15.5 mph (25 km/h)
No. of speeds, fwd	4
No. of speeds, rev	3

AXLES

Differential front type	Limited slip standard
Differential rear type	Limited slip standard
Axle oscillation	14°

STEERING

Steering configuration	Articulated
Steering relief pressure	2,900 psi (139 kPa)

BRAKES

Service brake type	Wet multi disc
Service brake actuation	Hydraulic
Parking brake type	Shoe/drum
Parking brake actuation	Spring apply; hydraulic release

HYDRAULIC SYSTEM

Main pump type	Vane
Main relief pressure	3,000 psi (144 kPa)
Raise time	7.2 sec
Dump time	1.4 sec
Float down time	3.5 sec
Fastest total cycle time	12.1 sec

LOADER ARM PERFORMANCE

Tipping load	51,808 lbs (23,500 kg)
Full turn tipping load	44,930 lbs (20,380 kg)
Bucket breakout force	58,450 lbs (26,512 kg)
Max dump angle at full height	45°
Dump clearance at full height discharge	10'10" (3300 mm)
Dump reach at full height discharge	5'1" (1547 mm)
Max hinge pin height	14'9" (4490 mm)
Max digging depth, bucket level	4.65" (118 mm)
Bucket rollback at ground level	45°
Bucket rollback at carry	49°
Bucket rollback at max height	63°

BUCKET PERFORMANCE

Reference Bucket	6.8 yd ³ (5.2 m ³)
------------------	---

DIMENSIONS

Length with bucket down	29'11" (9125 mm)
Width over tires	10'5" (3169 mm)
Wheelbase	11'7" (3530 mm)
Wheel tread	6'5" (1950 mm)
Ground clearance	1'7" (476 mm)
Turn angle, either side	38°
Rear angle of departure	25°
Turning radius, outside of tire	22'
Turning radius, center of tire	20'9" (6336 mm)
Turning radius, bucket carry	24'4" (7425 mm)

TIRES

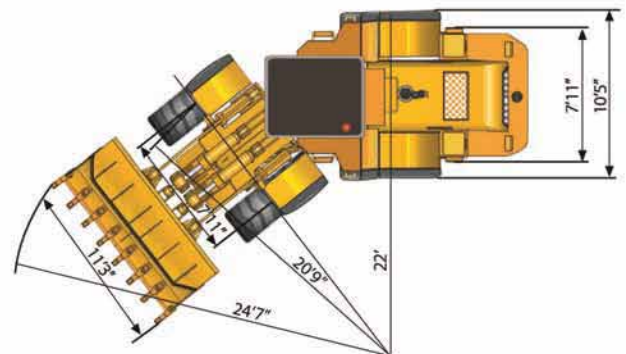
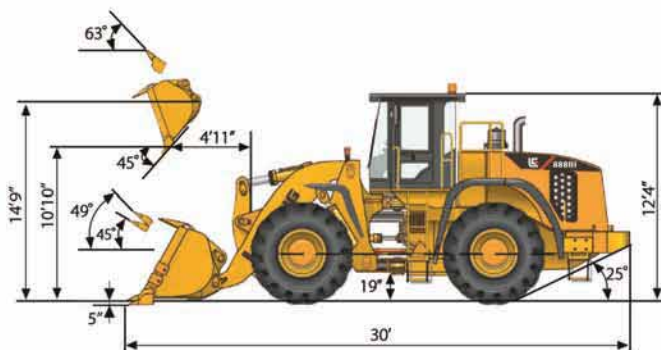
Tire size	29.5 R 25
-----------	-----------

OPERATING WEIGHTS

Operating Weight	66,139 lbs (30,000 kg)
------------------	------------------------

SERVICE CAPACITIES

Fuel tank	106 gal (400 L)
Engine oil	8.7 gal (33 L)
Cooling system	3.7 gal (14 L)
Hydraulic reservoir	66 gal (250 L)
Transmission and torque converter	18.5 gal (70 L)
Axles, each	17 gal (65 L)



*Specifications and designs are subject to change without notice. Machines shown may include optional equipment.