



Shaping the Future Together

904C

Hydraulic Excavator



Bucket Capacity	0.14 yd ³ (0.11m ³)
Rated Power	36.3 hp (27.1kW)@2200 rpm
Operating Weight	8818 lb (4000 kg)

LIUGONG CONSTRUCTION MACHINERY N.A., LLC

20823 Park Row

Katy, TX 77449

T: 281-579-8882

F: 281-579-8388

www.liugongna.com

info@liugongna.com



Engine

Model	4TNV88
Type	4-cylinder,4-stroke,in line, Water-cooled, diesel engine
Rated power	36.3 hp (27.1 kW)/2200 r/min
Net power	33.8 hp (25.2 kW)
Maximum torque	106 lb.ft (144 N.m)
Displacement	134 in ³ (2.19 L)

Undercarriage

Welded load undercarriage frame ensures outstanding durability in the toughest conditions. Idler rollers, carrier rollers, track rollers are sealed with a floating oil seal which requires no lubrication for a long time.

Number of carrier rollers	1 each side
Number of track rollers	4 each side
Number of idler rollers	1 each side
Number of shoes	44 each side
Width of track shoes	12"(300mm)

Service Refill Capacities

Fuel tank	14.5 gal (55 L)
Coolant	2.4 gal (9 L)
Engine lubricants	1.7 gal (6.5L)
Traveling reducer	0.13 gal (0.5 L) each side
Hydraulic system	19.8 gal (75 L)
Hydraulic tank	15.32 gal (58 L)

Hydraulic System

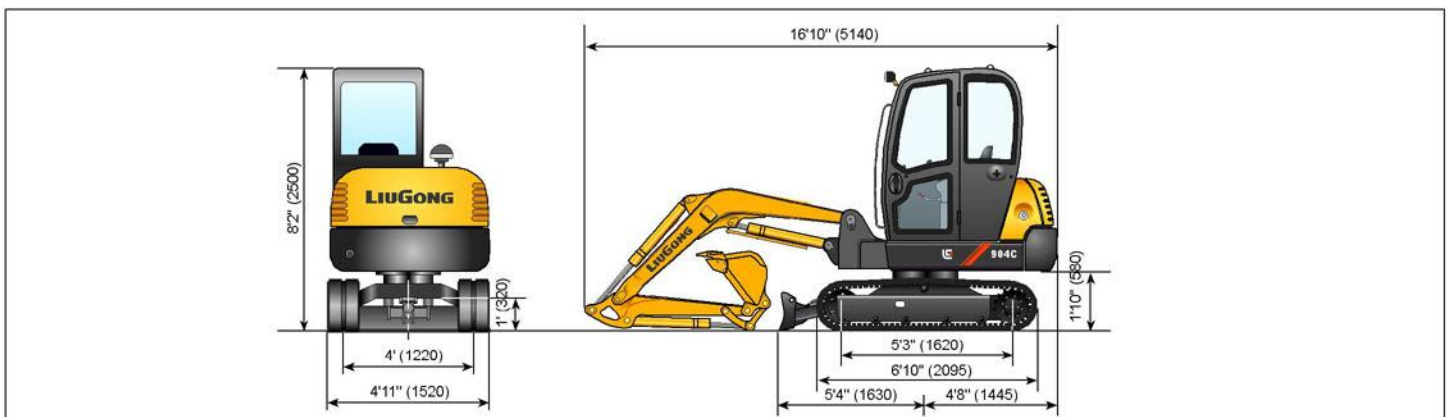
Main pump	4 pump system (2 piston pumps + 2 gear pumps)
Maximum flow	2 x 11.35+9.16 gal/min(2 x 43+34.7 L/min)
Working pressure	2988 psi (20.6 MPa)
Pilot pump	gear pump
Swinging motor relief valve	2988 psi (17.6 MPa)
Main relief valve boom/arm/bucket	2988 psi (20.6 MPa)
Traveling circuit	2988 psi (20.6 MPa)
Swing speed	10.8rpm
Travel speed	High:0~3.23 mph (0~5.2 km/h), Low:0~2.17 mph (0~3.5 km/h)
Gradeability	30°

Working Ranges

Maximum digging reach at ground level	17' 1" (5220 mm)
Maximum digging depth	10' 2" (3100 mm)
Maximum digging height	16' 4" (5000 mm)
Maximum digging radius	17' 6" (5350 mm)
Maximum dumping clearance	11' 9" (3600 mm)
Dozer blade working depth	1' 2" (380 mm)
Dozer blade working height	1' 2" (360 mm)
Bucket digging force	5822 lb(25.9 KN)
Arm digging force	4248 lb(18.9 KN)
Boom swing left / right	50° / 75°

Hoisting height (in/m)	Elevating Radius A .m									
	79(2m)		98(2.5m)		118(3m)		138(3.5m)		157(4m)	
	Vertical(lb/kg)	Lateral(lb/kg)	Vertical(lb/kg)	Lateral(lb/kg)	Vertical(lb/kg)	Lateral(lb/kg)	Vertical(lb/kg)	Lateral(lb/kg)	Vertical(lb/kg)	Lateral(lb/kg)
118 (3m)							1260	840	950	600
							570	380	430	270
98 (2.5m)					1720	1080	1230	790	950	600
					780	490	560	360	430	270
79 (2m)	3260	1740	2180	1410	1570	1010	1170	750	900	620
	1480	940	99	640	710	460	530	340	410	280
59 (1.5m)	2890	1740	2010	1260	1480	930	1120	710	880	530
	1310	790	910	570	670	420	510	320	400	240
39 (1m)	2650	1540	1850	1120	1390	880	1060	660	840	510
	1200	700	840	510	630	400	480	300	380	230
20 (0.5m)	2580	1500	1760	1060	1320	790	1010	600	820	460
	1170	680	800	480	600	360	460	270	370	210
0m	2580	1480	1720	1010	1280	750	990	570	790	440
	1170	670	780	460	580	340	450	260	360	200
-20 (-0.5m)	2580	1500	1720	1010	1260	730	970	570	770	440
	1170	680	780	460	570	330	440	260	350	200
-39 (-1m)	2600	1520	1720	1010	1260	750	970	550		
	1180	690	780	460	570	340	440	250		

Dimensions



Specifications and design are subject to change without prior notice.
Machines shown may include optional equipment.