

LIUGONG CONSTRUCTION MACHINERY N.A., LLC
20823 Park Row
Katy, Texas 77449 USA
T: +1 281-579-8882
F: +1 281-579-8388
info@liugongna.com



Engine	Cummins QSB6.7
Gross Power	155 hp (116 kW) @ 2,000 rpm
Net Power	142 hp (106 kW) @ 2,000 rpm
Maximum Digging Depth	21'8" (6604 mm)
Standard Bucket Capacity	1.31 yd ³ (1 m ³)
Operating Weight	50,500 lbs (22906 kg)

922D Excavator



ENGINE

Tier	Tier III
Make & Model	Cummins QSB6.7
Gross power	155 hp (116 kW) @ 2,000 rpm
Net power	142 hp (106 kW) @ 2,000 rpm
Peak torque	456 ft-lbs @ 1,500 rpm
Number of cylinders	6
Displacement	409 in ³ (6.7 L)

TRACK DRIVE

Max. travel speed	3.0 mph (4.8 km/h)
Gradeability	70%
Drawbar pull	43,838 lbs (19,885 kg)

UNDERCARRIAGE

Shoe width	31.5" (800 mm)
No. of shoes per side	49
No. of upper rollers per side	2
No. of bottom rollers per side	8

HYDRAULIC SYSTEM

Main pumps total flow	113 gal/min (428 L/min)
Relief pressure, main	4,612 psi (221 kPa)
Relief pressure, boost	4830 psi (231 kPa)
Pilot pump flow	5.28 gal/min (20 L/min)

SWING SYSTEM

Swing speed	11.5 rpm
-------------	----------

REFERENCE ARM

Arm length	9'6" (2896 mm)
Arm breakout force, normal, SAE	20,458 lbs (9280 kg)
Arm breakout force, boost, SAE	22,256 lbs (10095 kg)

WORKING RANGES

Max dig depth	21'8" (6604 mm)
Reach at ground level	31'10" (9700 mm)
Depth of 8' level bottom	21'0" (6400 mm)
Max dig height	31'3" (9525 mm)
Dump height	22'2" (6756 mm)
Max dig depth of vertical wall	18'6" (5639 mm)

BUCKET PERFORMANCE

Standard bucket heaped capacity	1.31 yd ³ (1 m ³)
Min heaped capacity of bucket options	0.95 yd ³ (0.73 m ³)
Max heaped capacity of bucket options	1.57 yd ³ (1.2 m ³)
Bucket breakout force, normal, SAE	28,775 lbs (13,052 kg)
Bucket breakout force, boost, SAE	31,473 lbs (14,276 kg)

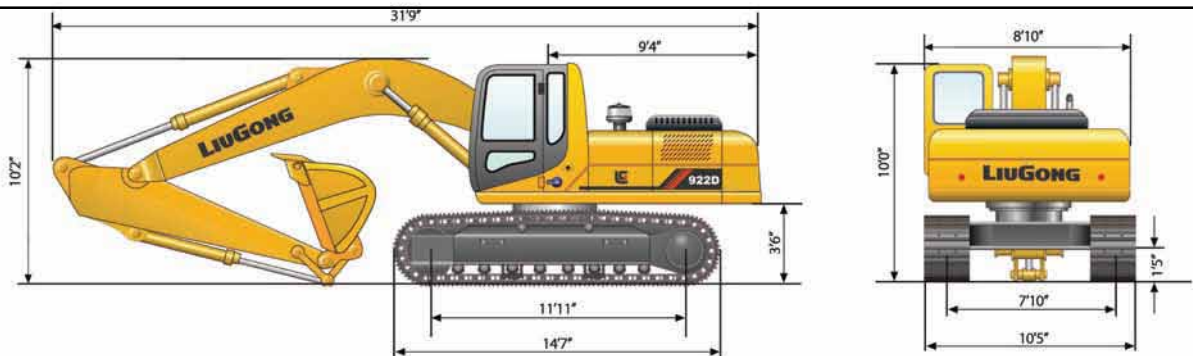
SERVICE CAPACITIES

Fuel tank	108.8 gal (411 L)
Engine oil	6.6 gal (25 L)
Cooling system	7.9 gal (30 L)
Hydraulic reservoir	60.7 gal (230 L)
Hydraulic system total	87.1 gal (330 L)

Bucket: SAE 1.24 yd³ (0.95 m³) 2,205 lb (1000 kg) Boom: 18' 7" (5669 mm) Arm: 9' 6" (2896 mm) Shoes: 31.5" (800 mm) Counterweight: 9,480 lb (4300 kg) Heavy lift mode

Lift Point Height	Max. reach											
	10' (3048 mm)		15' (4572 mm)		20' (6096 mm)		25' (7620 mm)		Front	Side		
20' (6096 mm)	lb					7,486	7,486		7,949	7,949	24'	
	kg					3396	3396		3606	3606	7315 mm	
15' (4572 mm)	lb					8,591	8,591	8,295	7,405	8,318	7,090	27'
	kg					3897	3897	3763	3359	3773	3216	8230 mm
-10' (-3048 mm)	lb	20,460	20,460	13,137	13,137	10,429	10,299	9,166	7,153	8,820	6,303	28'
	kg	9281	9281	5959	5959	4730	4671	4158	3244	4001	2859	8534 mm
5' (1524 mm)	lb	30,257	27,918	17,226	14,975	12,491	9,742	10,244	6,880	9,415	6,005	28'
	kg	13724	12663	7814	6793	5666	4419	4647	3121	4271	2724	8534 mm
0	lb	33,494	27,111	20,050	14,268	14,184	9,336	11,179	6,673	10,169	6,124	28'
	kg	15193	12297	9095	6472	6434	4235	5071	3027	4613	2778	8534 mm
-5' (-1524 mm)	lb	33,287	27,191	21,148	14,049	15,079	9,162	11,404	6,602	11,144	6,715	26'
	kg	15099	12334	9593	6373	6840	4156	5173	2995	5055	3046	7925 mm
-10' (-3048 mm)	lb	31,069	27,654	20,579	14,184	14,810	9,230			12,290	8,025	23'
	kg	14093	12544	9334	6434	6718	4187			5575	3640	7010 mm
-15' (-4572 mm)	lb	26,276	26,276	17,854	14,649							
	kg	11919	11919	8098	6645							

1. Indicates the load is limited by hydraulic capacity rather than tipping capacity.
 2. The above rated loads are in compliance with ISO 10567 hydraulic excavator lift capacity rating standard. They do not exceed 87% of hydraulic lifting capacity or 75% tipping load.
 3. Ratings at bucket lift hook.



*Specifications and designs are subject to change without notice. Machines shown may include optional equipment.

LIUGONG CONSTRUCTION MACHINERY N.A., LLC
 20823 Park Row
 Katy, Texas 77449 USA
 T: +1 281-579-8882
 F: +1 281-579-8388
 info@liugongna.com
 www.liugongna.com