



Meets Tier 3/Stage IIIA Emission

Bucket Capacity	0.95-1.4 yd ³ (0.73-1.05 m ³)
Rated Power	155 hp (116 kW) @2000 rpm
Operating Weight	50000 lb (22680 kg)

LIUGONG CONSTRUCTION MACHINERY N.A., LLC

20823 Park Row
Katy, Texas 77449 USA

T: +1 281-579-8882

F: +1 281-579-8388

www.liugongna.com

Info@liugongna.com

CLG922LC Hydraulic Excavator Meets Tier 3/Stage IIIA Emission



Engine

Model	Cummins QSB6.7-C155
Type	6-cylinder, 4-stroke cycle, direction, electronic controlled turbocharged diesel engine
Rated power	155 hp (116 kW) @2000 rpm
Net power	142 hp (105.6 kW) @2000 rpm
Max. torque	4.56 lb.ft (618 N.m) / 1100 r/min
Bore x stroke	4" x 4" (102 x 120 mm)
Displacement	409 in ³ (6.5 L)

Hydraulic System

Main pump	Two variable displacement piston pumps
Maximum flow	2 x 52.8 gal/min (2 x 200 L/min)
Pilot pump	Gear pump
Implement circuits	4612 psi (31.8 MPa)
Power boost / heavy lift	4978 psi (34.3 MPa)
Swing circuits	3698 psi (25.5 MPa)
Travel circuit	4612 psi (31.8 MPa)
Pilot circuit	565 psi (3.9 MPa)
Swing speed	11.3 r/min
Travel speed	High: 3.45mph (4.9 km/h), Low: 1.80 mph (2.9 km/h)
Gradeability	35 ^o (70%)

Undercarriage

Number of carrier rollers	2 each side
Number of track rollers	8 each side
Number of idler rollers	1 each side
Number of shoes	49 each side
Width of track shoes	32" (800 mm)

Capacities

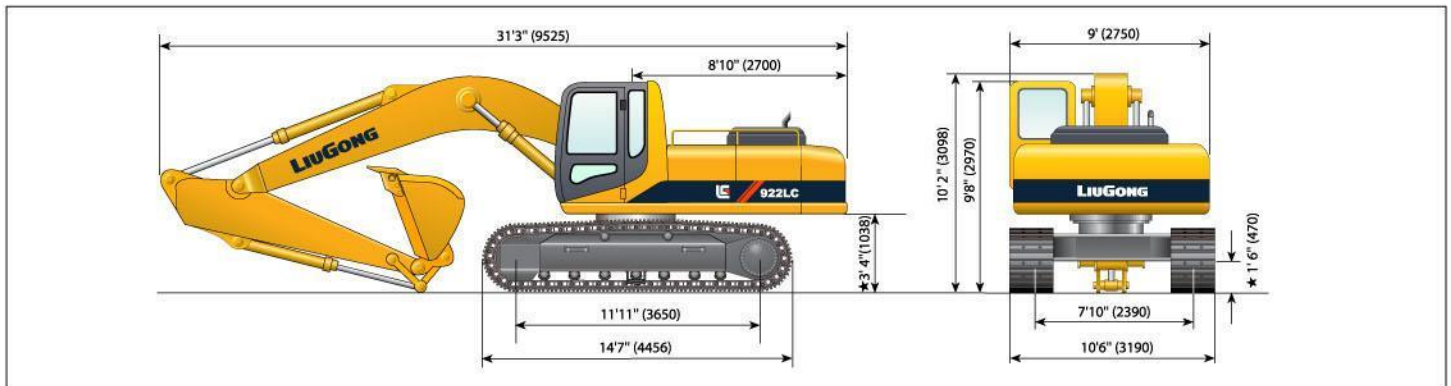
Fuel tank	88.5 gal (335 L)
Coolant	7.9 gal (30 L)
Engine lubricants	4.7 gal (18 L)
Swing drive	0.9 gal (3.4 L)
Final drive	each side 1.45 x 2 gal(5.5 L x 2 L)
Hydraulic system	68.7 gal (260 L)
Hydraulic tank	42.3 gal (160 L)

Working Ranges

Arm length	9'7" (2.91 m)
Maximum cutting height	31'10" (9705 mm)
Maximum digging depth	21'8" (6615 mm)
Maximum vertical wall digging depth	18'7" (5655 mm)
Maximum dumping height	22'3" (6770 mm)
Maximum digging height	31'4" (9540 mm)
Minimum swing radius	11'2" (3400 mm)
Maximum bucket digging force SAE	28776 lb / 128 kN
Maximum bucket digging force (boost) SAE	31473 lb / 140 kN
Maximum arm crowd force SAE	20458 lb / 91 kN
Maximum arm crowd force (boost) SAE	22256 lb / 99 kN

Lift Point Height		Boom: 18.6ft (5680mm) Arm: 9.5ft (2910mm), Bucket: SAE 1.24yd ³ (0.95m ³)							
		10ft (3.0m)		15ft (4.6m)		20ft (6.1m)		25ft (7.6m)	
15 ft	lb					*8092	*8092	*7746	6791
4.6 m	kg					*3678	*3678	*3521	3087
10 ft	lb	*19230	*19230	*12313	*12313	*9733	9510	*8510	6545
3.0 m	kg	*8741	*8741	*5597	*5597	*4424	4323	*3868	2975
5 ft	lb	*27947	25630	*15945	13794	*11561	8939	*9451	6266
1.5 m	kg	*12703	11650	*7252	6270	*5255	4063	*4296	2848
Ground	lb	*30573	24781	*18412	13041	*13035	8519	*10252	6046
Level	kg	*13897	11264	*8369	5928	*5925	3968	*4660	2748
-5 ft	lb	*30162	25203	*19283	12786	*13765	8312	10153	5955
-1.5 m	kg	*13710	11456	*8765	5812	*6257	3778	4615	2707
-10 ft	lb	*27966	25203	*18630	12885	*13416	8256		
-3.0 m	kg	*12712	11456	*8468	5857	*6098	3798		

Dimensions (32" (800mm) width track)



Specifications and design are subject to change without prior notice. Machines shown may include optional equipment.