

Meets EPA Tier 3

Bucket Capacity	1.31-1.70 yd ³ (1.0-1.3 m ³)
Rated Power	190 hp (142 kW) @2200 rpm
Net Power	173 hp (129 kW) @2200 rpm
Operating Weight	58400 lb (26500 kg)



LIUGONG CONSTRUCTION MACHINERY N.A., LLC
20823 Park Row
Katy, Texas 77449 USA
T: +1 281-579-8882
F: +1 281-579-8388
www.liugongna.com
Info@liugongna.com



CLG925LC Hydraulic Excavator Meets EPA Tier 3



Engine

Model	Cummins QSB6.7
Type	6-cylinder, 4-stroke electronically controlled, turbocharged diesel engine
Rated Power	190 hp (142 kW) @2200 rpm
Net Power	173 hp (129 kW) @2200 rpm
Max. Torque	506.7 lb-ft (687 N.m) @1400 rpm
Bore x Stroke	4.21" x 4.88" (107 x 124 mm)
Displacement	409 in ³ (6.7 L)

Hydraulic System

Main Pump	Two variable displacement piston pumps
Maximum Flow	2 x 60.8 gal/min (2 x 230 L/min)
Pilot Pump	Gear pump
Implement Circuits	4612 psi (31.8 MPa)
Power Boost / Heavy Lift	4975 psi (34.3 MPa)
Swing Circuits	3698 psi (25.5 MPa)
Travel Circuit	4612 psi (31.8 MPa)
Pilot Circuit	565 psi (3.9 MPa)
Swing Speed	10.5 rpm
Max Travel Speed	High: 3.3 mph (5.3 km/h), Low 1.9 mph (3.1 km/h)
Gradeability	35° (70%)

Undercarriage

Number of Carrier Rollers	2 each side
Number of Track Rollers	9 each side
Number of Idler Rollers	1 each side
Number of Shoes	49 each side
Width of Track Shoes	31.5" (800 mm)

Capacities

Fuel Tank	119 gal (450 L)
Coolant	7.9 gal (30 L)
Engine Lubricants	6.6 gal (25 L)
Swing Drive	1.1 gal (4.4 L)
Final Drive (each)	1.45 gal (5.5 L)
Hydraulic System	87.2 gal (330 L)
Hydraulic Tank	60.7 gal (230 L)

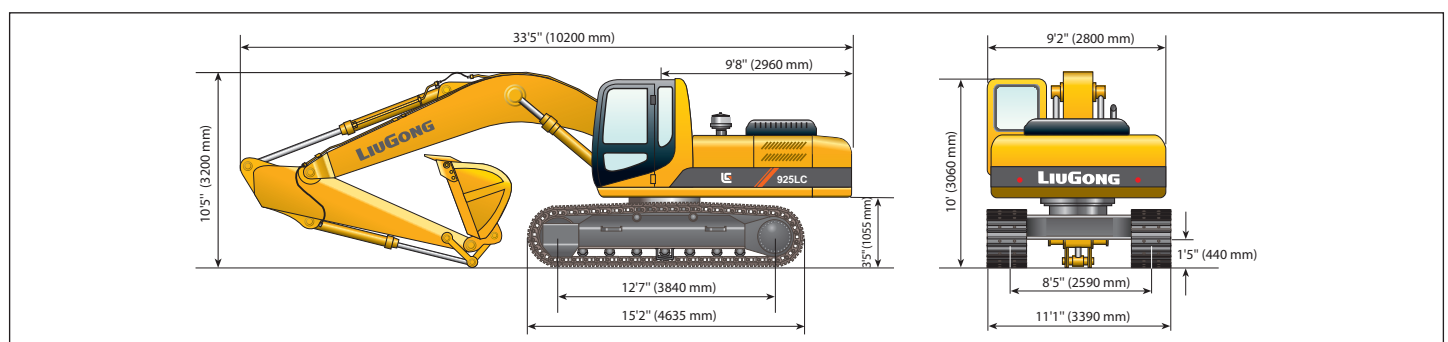
Working Ranges

Arm Length	19'8" (2.96 m)
Maximum Reach	34'1" (10390 mm)
Maximum Reach At Ground Level	33'6" (10230 mm)
Maximum Digging Depth	23' (7015 mm)
Maximum Digging Depth At 8' Flat Bottom	21'11" (6990 mm)
Maximum Vertical Wall Digging Depth	19'6" (5960 mm)
Maximum Dumping Height	22'5" (6840 mm)
Maximum Digging Height	31'10" (9720 mm)
Minimum Swing Radius	13'8" (4175 mm)
Maximum Bucket Digging Force SAE	31,248 lb / 139 kN
Maximum Bucket Digging Force (boost) SAE	33,720 lb / 150 kN
Maximum Arm Crowd Force SAE	23,155 lb / 103 kN
Maximum Arm Crowd Force (boost) SAE	24,954 lb / 111 kN

Bucket SAE 1.44 yd ³ (1.1 m ³) 1982 lb (899 kg) Boom 19'8" (6000 mm) Arm 9'8" (2960 mm) Shoes 31.5" (800 mm) Counter Weight 13448 lb (6100 kg) Heavy Lift Mode														
Lift Point Height		10' (3048 mm)				15' (4572 mm)		20' (6096 mm)		25' (7620 mm)		Max. Reach		
		lb	kg	lb	kg	lb	kg	lb	kg	Front	Side			
20' (6096 mm)	lb									※9190	※9190	※8940	※8940	22'
	kg									※4169	※4169	※4055	※4055	6615 mm
15' (4572 mm)	lb					※11036	※11036	※10266	9230	※8944	※8944	※8944	※8944	25'
	kg					※5006	※5006	※4657	4187	※4057	※4057	※4057	※4057	7665 mm
10' (3048 mm)	lb	※29078	※29078	※17433	※17433	※13357	12680	※11430	8824	※8777	8241	8241	28'	
	kg	※13190	※13190	※7907	※7907	※6059	5752	※5185	4002	※3981	3738	3738	8400 mm	
5' (1524 mm)	lb	※39563	34312	※22171	18238	※15802	11876	※12751	8406	※9740	7454	7454	29'	
	kg	※17945	15564	※10057	8273	※7168	5387	※5784	3813	※4418	3381	3381	8715 mm	
0	lb	※41342	33688	※25108	17319	※17698	11305	※13734	8086	※10587	7050	7050	29'	
	kg	※18752	15281	※11389	7856	※8028	5128	※6230	3668	※4802	3198	3198	8820 mm	
-5' (-1524 mm)	lb	※40299	33840	※26018	17039	※18619	11044	※13575	7943	12132	7139	7139	28'	
	kg	※18279	15350	※11802	7729	※8445	5009	※6158	3603	5503	3238	3238	8610 mm	
-10' (-3048 mm)	lb	※37374	34395	※25116	17182	※18245	11091			13252	7769	7769	28'	
	kg	※16953	15601	※11392	7794	※8276	5031			6011	3524	3524	8085 mm	
-15' (-4572 mm)	lb	※31774	※31774	※21964	17720					※14698	9215	9215	24'	
	kg	※14412	※14412	※9963	8038					※6667	4180	4180	7245 mm	

- ※ Indicates the load is limited by hydraulic capacity rather than tipping capacity.
- The above rated loads are in compliance with ISO 10567 hydraulic excavator lift capacity rating standard. They do not exceed 87% of hydraulic lifting capacity or 75% tipping load.
- Ratings at bucket lift hook.

Dimensions



Specifications and design are subject to change without prior notice.
Machines shown may include optional equipment.