

Meets EPA Tier 3

Bucket Capacity	1.83-3.0 yd ³ (1.4-2.3 m ³)
Rated Power	280 hp (209 kW) @1900 rpm
Net Power	260 hp (194 kW) @1900 rpm
Operating Weight	81600 lb (37000 kg)



LIUGONG CONSTRUCTION MACHINERY N.A., LLC
20823 Park Row
Katy, Texas 77449 USA
T: +1 281-579-8882
F: +1 281-579-8388
www.liugongna.com
Info@liugongna.com



CLG936LC Hydraulic Excavator Meets EPA Tier 3



Engine

Model	Cummins QSC8.3
Type	6-cylinder, 4-stroke, electronically controlled, turbocharged diesel engine
Rated Power	280 hp (209 kW) @1900 rpm
Net Power	260 hp (194 kW) @1900 rpm
Max. Torque	870 lb-ft (1180 N.m) @1500 rpm
Bore x Stroke	4.49" x 5.31" (114 x 135 mm)
Displacement	507 in ³ (8.3 L)

Hydraulic System

Main Pump	Two variable displacement piston pump
Maximum Flow	2 x 74 gal/min (2 x 280 L/min)
Pilot Pump	Gear pump
Implement Circuits	4830 psi (32.3 MPa)
Power Boost / Heavy Lift	5120 psi (35.3 MPa)
Swing Circuits	3800 psi (26.2 MPa)
Travel Circuit	4830 psi (32.3 MPa)
Pilot Circuit	580 psi (4 MPa)
Swing Speed	9 rpm
Max Travel Speed	High: 3.3 mph (5.3 km/h), Low 2.1 mph (3.4 km/h)
Gradeability	35° (70%)

Undercarriage

Number of Carrier Rollers	2 each side
Number of Track Rollers	9 each side
Number of Idler Rollers	1 each side
Number of Shoes	48 each side
Width of Track Shoes	31.5" (800 mm)

Capacities

Fuel Tank	163.8 gal (620 L)
Coolant	10.6 gal (40 L)
Engine Lubricants	5.3 gal (20 L)
Swing Drive	2.8 gal (10.5 L)
Final Drive (each)	2.5 gal (9.5 L)
Hydraulic System	119 gal (450 L)
Hydraulic Tank	63.4 gal (240 L)

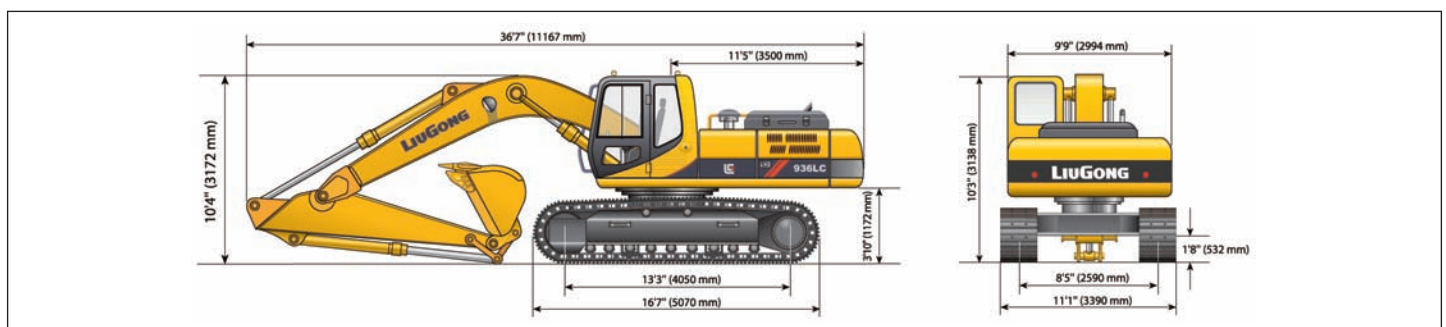
Working Ranges

Arm Length	10'5" (3.2 m)
Maximum Cutting Height	31'10" (9705 mm)
Maximum Digging Depth	24'1" (7340 mm)
Maximum Vertical Wall Digging Depth	21'2" (6460 mm)
Maximum Dumping Height	24'4" (7160 mm)
Maximum Digging Height	33'7" (10240 mm)
Minimum Swing Radius	14'7" (4465 mm)
Maximum Bucket Digging Force SAE	44,737 lb / 199 kN
Maximum Bucket Digging Force (boost) SAE	48,559 lb / 216 kN
Maximum Arm Crowd Force SAE	32,822 lb / 146 kN
Maximum Arm Crowd Force (boost) SAE	36,194 lb / 161 kN

Bucket SAE 1.83 yd ³ (1.4 m ³) 2470 lb (1120 kg) Boom 21 ft (6400 mm) Arm 10.5 ft (3200 mm) Shoes 31.5 in (800 mm) Counter Weight 16645 lb (7550 kg) Heavy Lift Mode														
Lift Point Height	10' (3048 mm)		15' (4572 mm)		20' (6096 mm)		25' (7620 mm)		30' (9144 mm)		Max. Reach			
	lb	kg	lb	kg	lb	kg	lb	kg	lb	kg	Front	Side		
20' (6096 mm)	lb						※ 15645	※ 15645			※ 13979	12645	30'	
	kg						※ 7095	※ 7095			※ 6340	5735	9020 mm	
15' (4572 mm)	lb						※ 17089	15423	※ 15870	11439	※ 11847	10696	31'	
	kg						※ 7750	6994	※ 7197	5188	※ 5373	4850	9572 mm	
10' (3048 mm)	lb	※ 49693	※ 49693	※ 30061	※ 30061	※ 22757	20727	※ 19047	14836	※ 16909	11155	※ 16395	10471	32'
	kg	※ 22536	※ 22536	※ 13633	※ 13633	※ 10320	9400	※ 8638	6728	※ 7668	5059	※ 7435	4749	9851 mm
5' (1524 mm)	lb	※ 62791	55008	※ 36706	29585	※ 26298	19642	※ 21027	14250	※ 17929	10848	16898	10220	32'
	kg	※ 28476	24946	※ 16646	13417	※ 11926	8908	※ 9536	6462	※ 8131	4920	7663	4635	9882 mm
0	lb	※ 64007	54058	※ 40297	28359	※ 28785	18869	※ 22526	13794	17665	10608	16684	10026	32'
	kg	※ 29027	24515	※ 18275	12861	※ 13054	8557	※ 10216	6256	8011	4811	7566	4547	9678 mm
-5' (-1524 mm)	lb	※ 61417	54206	※ 40859	27945	※ 29720	18481	22903	13542	17559	10513	17658	10470	30'
	kg	※ 27852	24582	※ 18530	12673	※ 13478	8381	10387	6141	7963	4768	8008	4748	9213 mm
-10' (-3048 mm)	lb	※ 56252	54854	※ 38882	28051	※ 28820	18452	※ 22202	13544			※ 19678	12045	28'
	kg	※ 25510	24876	※ 17633	12721	※ 13070	8368	※ 10069	6142			※ 8924	5462	8444 mm
-15' (-4572 mm)	lb	※ 47682	※ 47682	※ 34058	28578	※ 25407	18787					※ 20672	15174	24'
	kg	※ 21624	※ 21624	※ 15445	12960	※ 11522	8520					※ 9375	6881	7273 mm
-20' (-6096 mm)	lb	※ 33403	※ 33403	※ 24459	※ 24459							※ 21507	※ 21507	18'
	kg	※ 15148	※ 15148	※ 11092	※ 11092							※ 9753	※ 9753	5430 mm

- ※ Indicates the load is limited by hydraulic capacity rather than tipping capacity.
- The above rated loads are in compliance with ISO 10567 hydraulic excavator lift capacity rating standard. They do not exceed 87% of hydraulic lifting capacity or 75% tipping load.
- Ratings at bucket lift hook.

Dimensions



Specifications and design are subject to change without prior notice. Machines shown may include optional equipment.