

Bulldozer Series

Trimming Dozer Series

Pipelayer Series



SHANTUI[®]
VALUE THAT WORKSSM

Shantui Construction Machinery Co., Ltd.

ADDRESS:
No. 58 G327 Highway
Jining City, Shandong, CHINA

TEL: +86-537-2909351 2909368 2909369

FAX: +86-537-2311219

EMAIL: trade@shantui.com

WEB: www.shantui.com



Shantui Construction Machinery Co., Ltd.
is a flagship member of the Shandong
Heavy Industry Group newly formed in 2009.

© 2011 Shantui

2011.09

SHANTUI[®]
VALUE THAT WORKSSM





TABLE OF CONTENTS

4 Bulldozers

80 HP

5 SD08

100 HP

6 SD10YE

130 HP

8 SD13, SD13-2

9 SD13S

160 HP

10 SD16

11 SD16C, SD16E

12 SD16F, SD16H

13 SD16L

14 SD16R

15 SD16T, SD16TL

220 HP

16 SD22

17 SD22C

18 SD22D

19 SD22E

20 SD22F

21 SD22R, SD22G

22 SD22S, SD22W

230 HP

24 SD23

320 HP

27 SD32

28 SD32D

29 SD32W

420 HP

30 SD42-3

520 HP

31 SD52-5

32 Trimming Dozers

80 HP

33 SB08E-3, SB08S

110 HP

34 SB11, SB11S

130 HP

35 SB13

36 Dozer Parts and Components

38 Engine Options

39 Blades, Rippers, Cabins

40 Pipelayers

41 SP25Y, SP25YL

42 SP45Y, SP45YS

43 SP70Y

44 Sales & Service



Welcome to Shantui!

Home of Value That Works

HOW DO YOU SAY 'BULLDOZER' IN CHINESE?

Just as leading brand names have become substitutes for product names around the world, savvy Chinese often simply say 'Shantui' when they talk about bulldozers.

It makes sense: Shantui is the King of the Hill in China when it comes to the muscular machines that powered much of China's phenomenal quarter century-long construction boom. For decades, Shantui has led China's bulldozer market in most every category of market and volume share.

BEYOND THE GREAT WALL

Today, Shantui is well on its way to becoming synonymous with 'bulldozers' well beyond the borders of China, delivering the mechanical muscle to construct great walls, not to mention dams, power plants, housing, factories, hospitals, buildings, offices, ports—you name it!—just about everywhere on the planet people put mechanical muscle to work to build structures or tear them down.

And in 2010, Shantui became the world's Number One volume manufacturer and seller of bulldozers!

IT'S ALL ABOUT MOVING DIRT!

No question about it. Being Number One in the world is a big deal. We're proud of our accomplishments.

But we haven't forgotten how we got to be King of the Hill: Move more dirt better for less and the world will beat a path to your door!

So our job is to make the machines that get your jobs done...better, faster, more efficiently and at a lower cost. It's about more muscle, higher performance, rugged reliability, superb service and building bulldozers that go from one tough job to the next...and the next...without missing a beat or a day's work.

FAMILY TIES

Shantui's diverse bulldozers range from just-big-enough to gigantic. Some are designed to get your jobs done in crowded urban environments; others in biting cold or sweltering desert sands, humid rain forests or remote mountaintops. They work for small companies and multinational enterprises. Their operators range from seasoned professionals, to folks who never sat behind a steering wheel before.

But every Shantui bulldozer shares a common trait:

WE CALL IT VALUE THAT WORKS.

Much of Shantui's operations are headquartered in a massive well-organized industrial park in Jinan.



SHANTUI—VALUE THAT WORKS!

Great slogan, but how does Shantui create bulldozers that do more for less, deliver higher performance and greater value?

- Get-the-job-done design. Shantui bulldozers are packed with all the features you need for efficient work, job-centered productivity and operator safety, but with none of those 'bells and whistles,' costly extraneous add-ons that drive up your costs without enhancing job performance.
- Height, weight and reach. Built to survive and thrive on the toughest job sites under less-than-optimal working conditions, Shantui bulldozers are consistently heavier and more stable than the other guys' dozers.

- Shantui bulldozers, Shantui parts. Shantui manufactures all our bulldozers' structural parts—undercarriage, tracks, buckets, roller sets, torque converters, transmissions and more—in house. That means better quality control for our bulldozers and a better price for you.
- Designed for onsite maintenance and repair. More maintenance and many repairs can get done onsite without costly, job-delaying downtime.
- Economy of scale. Sometimes bigger is better: Only a world sales and manufacturing leader can supply the just-right bulldozer—a complete line of more than 20 dozer types and sizes including models with engines that meet Tier III/Stage III A European and USA emission standards—for the vast variety of jobs and conditions our customers take on around China

and around the world. Only a world sales and manufacturing leader would devote the R&D resources in arcane fields like high efficiency push factors required to build a better dozer that does more for less. And only a world sales and manufacturing leader could make Anytime, Anywhere Service a worldwide reality.

• Solid machines, solid values. Call us old-fashioned, but we believe that the values held by people who make a product can add to that product's value. Our headquarters are located near the home of Confucius, China's preeminent philosopher; our corporate and personal ethos is steeped in his teachings fostering virtue, loyalty and lofty ethical standards. And we strive to make that philosophy part of each of our business dealings. "Do business today, be friends for life" is more than a slogan. It's a way of life at Shantui.



KINGS OF THE HILL

Value Ready to Work for You

Shantui Bulldozers

Move more dirt better for less and the world will beat a path to your door!

We admit it: They didn't use bulldozers to build the Great Wall of China or construct the pyramids.

But more recently, it is the bulldozer that has delivered the muscle needed to complete epic projects that have altered the topography of our planet and changed the way we live. And at many of those memorable constructions sites, you'll find Shantui bulldozers.

Shantui's diverse bulldozers range from just-big-enough to gigantic. Some are designed to get your jobs done in crowded urban environments; others in biting cold or sweltering desert sands, humid rain forests or remote mountaintops.

▼ BULLDOZERS



80 HP

SD08

The SD08 is the smallest dozer in Shantui's lineup. Designed for smaller volume tasks, this durable workhorse takes on the most rugged jobs with strength that belies its size.

Technical specifications:

| 80 HP | UNIT | MODEL |
|---------------------|----------------|--|
| SD08 | | |
| 3973x2553x2785 | mm | LxWxH (Ripper not included) |
| 7.65 | t | Operating weight (Ripper not included) |
| Weichai WP4690E235 | | Engine |
| 63/2350 | kW/rpm | Rated power |
| 30 | ° | Gradeability |
| Straight tilt blade | | Blade type |
| 2553x890 | mm | Blade width |
| 2.02 | m ³ | Dozing capacity |
| 383 | mm | Drop below ground of blade |
| 850 | mm | Lift height of blade |
| 1 | | Number of carriers (each side) |
| 6 | | Number of track rollers (each side) |
| 41 | | Number of track shoes (each side) |
| 460 | mm | Width of track shoe |
| 1450 | mm | Track gauge |
| 2185/0.038 | mm/MPa | Ground length and ground pressure |
| 154.25 | mm | Pitch |
| 0-2.53 | km/h | Forward speed |
| 0-4.55 | | |
| 0-7.57 | | |
| 0-2.76 | Reverse speed | |
| 0-4.95 | | |
| 0-8.26 | | |



Product features

With a high power, high efficiency, turbocharged engine featuring a large torque reserve coefficient, a single PPC lever controlling all shifting and steering, the 80 hp SD08 makes short work of smaller volume jobs. Its extended track ensures low ground pressure, high reliability and strong traction while the comfortable wide visibility hexahedron cab and integrated dashboard design help keep operator productivity at peak levels. Equipped with a straight tilt blade for excavating, transporting and backfilling in earth moving projects on roads, farms, rivers, urban areas and power plant projects.

► THE SPECIFICATIONS ARE SUBJECT TO CHANGE WITHOUT NOTICE. THE PICTURES MAY INCLUDE OPTIONS. THE ACTUAL COLOR AND APPEARANCE OF THE PRODUCT MAY DIFFER FROM WHAT IS SHOWN.



100 HP

SD10YE

Our first Tier III Stage/ III model—
a reliable 'little beast'



SD10YE ▲
Use: General

Rated Power: 74kW@2200rpm
Engine Model: Cummins QSB4.5
Operating Weight: 9.1 tons

Product features

The 100 hp SD10YE bulldozer is the first Shantui product sold in the United States. Its powerful, electronically controlled turbocharged Cummins engine meets Tier III Stage III A European and US emission standards. Designed for smaller work projects, but like all Shantui bulldozers, it's environment-friendly, highly economical and, above all, reliable. Equipped with a straight-tilt blade, the hydrostatic SD10YE is most often used for excavating, transporting and backfilling in earth moving projects on roads, farms, rivers, urban areas and power plant projects.

Technical specifications:

| MODEL | UNIT | 100 HP SD10YE |
|--|----------------|---------------------|
| LxWxH (Ripper not included) | mm | 4285x2740x2777 |
| Operating weight (Ripper not included) | t | 9.1 |
| Engine | | Cummins QSB4.5 |
| Rated power | kW/rpm | 74/2200 |
| Gradeability | ° | 30 |
| Blade type | | Straight tilt blade |
| Blade width | mm | 2740x890 |
| Dozing capacity | m ³ | 2.2 |
| Drop below ground of blade | mm | 440 |
| Lift height of blade | mm | 890 |
| Number of carriers (each side) | | 1 |
| Number of track rollers (each side) | | 6 |
| Number of track shoes (each side) | | 39 |
| Width of track shoe | mm | 460 |
| Track gauge | mm | 1650 |
| Ground length and ground pressure | mm/MPa | 2360/0.04 |
| Pitch | mm | 171.45 |
| Forward speed | km/h | 0-4.3 |
| | | 0-6.5 |
| | | 0-8.5 |
| Reverse speed | km/h | 0-4.3 |
| | | 0-6.5 |
| | | 0-8.5 |

▲ THE SPECIFICATIONS ARE SUBJECT TO CHANGE WITHOUT NOTICE. THE PICTURES MAY INCLUDE OPTIONS. THE ACTUAL COLOR AND APPEARANCE OF THE PRODUCT MAY DIFFER FROM WHAT IS SHOWN.



130 HP

SD13

Compact, reliable, durable



SD13 ▲
Use: General

Rated Power: 95.5kW@1900rpm
Engine Model: Shangchai SC8D143G2B1
Operating Weight: 13.7 tons

Product features

The SD13 gets mid-range volume jobs done in record time. A smaller version of our best-selling SD16 line, the SD13 delivers all the durability and reliability of its larger cousin series. With a high power, high efficiency, turbo charged engine featuring a large torque reserve coefficient, the 130 hp SD13 is ready for work. Its extended track ensures low ground pressure, high reliability and strong traction while the comfortable wide visibility hexahedron cab and integrated dashboard design help keep operator productivity at peak levels.

SD13-2

The SD13-2 also gets mid-range volume jobs done in record time. A smaller version of our best-selling SD16 line, the SD13-2 delivers all the durability and reliability of its larger cousins. Powered by a high power, high efficiency, turbocharged Cummins engine featuring a large torque reserve coefficient, the 130 hp SD13-2 is ready for work. Its extended track ensures low ground pressure, high reliability and strong traction, while the comfortable wide visibility hexahedron cab and integrated dashboard design help keep operator productivity at peak levels.

Rated Power: 95.5/1900 kW/rpm
Engine Model: CUMMINS 6CT8.3
Operating Weight: 13.7 tons

Technical specifications:

| | UNIT | 130 HP | |
|--|----------------|---|---|
| MODEL | | SD13 | SD13-2 |
| LxWxH (Ripper not included) | mm | 4492x3185x2950 | 4492x3185x2950 |
| Operating weight (Ripper not included) | t | 13.7 | 13.7 |
| Engine | | Shangchai SC8D143G2B1 | CUMMINS 6CT8.3 |
| Rated power | kW/rpm | 95.5/1900 | 95.5/1900 |
| Gradeability | ° | 30 | 30 |
| Blade type | | Straight tilt blade Angle blade | Straight tilt blade Angle blade |
| Blade width | mm | Straight tilt blade 3185x1090 Angle blade 3475x915 | Straight tilt blade 3185x1090 Angle blade 3475x915 |
| Dozing capacity | m ³ | Straight tilt blade 3.7 Angle blade 3.4 | Straight tilt blade 3.7 Angle blade 3.4 |
| Drop below ground of blade | mm | 590 | 590 |
| Lift height of blade | mm | 930 | 930 |
| Ripper type | | Three-shank ripper | Three-shank ripper |
| Ripping depth of ripper | mm | 467 | 467 |
| Lifting height of ripper | mm | 559 | 559 |
| Number of carriers (each side) | | 2 | 2 |
| Number of track rollers (each side) | | 6 | 6 |
| Number of track shoes (each side) | | 38 | 38 |
| Width of track shoe | mm | 460 | 460 |
| Track gauge | mm | 1880 | 1880 |
| Ground length and ground pressure | mm/MPa | 2365/0.063 | 2365/0.063 |
| Pitch | mm | 190 | 190 |
| Forward speed | km/h | 0-3.2 | 0-3.2 |
| | | 0-5.9 | 0-5.9 |
| | | 0-9.8 | 0-9.8 |
| | | 0-3.9 | 0-3.9 |
| Reverse speed | km/h | 0-7.1 | 0-7.1 |
| | | 0-11.9 | 0-11.9 |

▶ THE SPECIFICATIONS ARE SUBJECT TO CHANGE WITHOUT NOTICE. THE PICTURES MAY INCLUDE OPTIONS. THE ACTUAL COLOR AND APPEARANCE OF THE PRODUCT MAY DIFFER FROM WHAT IS SHOWN.

130 HP

SD13S

Compact power for swampy environments

Technical specifications:

| | UNIT | MODEL |
|-----------------------|----------------|-------------------------------------|
| SD13S | | MODEL |
| 4492x3450x3000 | mm | LxWxH |
| 14.9 | t | Operating weight |
| Shangchai SC8D143G2B1 | | Engine |
| 95.5/1900 | kW/rpm | Rated power |
| 30 | ° | Gradeability |
| Straight tilt blade | | Blade type |
| 3450x980 | mm | Blade width |
| 3.3 | m ³ | Dozing capacity |
| 590 | mm | Drop below ground of blade |
| 930 | mm | Lift height of blade |
| 2 | | Number of carriers (each side) |
| 6 | | Number of track rollers (each side) |
| 38 | | Number of track shoes (each side) |
| 700 | mm | Width of track shoe |
| 1880 | mm | Track gauge |
| 2365/0.044 | mm/MPa | Ground length and ground pressure |
| 190 | mm | Pitch |
| 0-3.2 | km/h | Forward speed |
| 0-5.9 | | |
| 0-9.8 | | |
| 0-3.9 | | |
| 0-7.1 | km/h | Reverse speed |
| 0-11.9 | | |

▶ THE SPECIFICATIONS ARE SUBJECT TO CHANGE WITHOUT NOTICE. THE PICTURES MAY INCLUDE OPTIONS. THE ACTUAL COLOR AND APPEARANCE OF THE PRODUCT MAY DIFFER FROM WHAT IS SHOWN.



SD13S ▲
Use: Swamp

Rated Power: 95.5kW@1900rpm
Engine Model: Shangchai SC8D143G2B1
Operating Weight: 14.9 tons

Product features

SD13S gets mid-range volume jobs done in swampy terrain in record time. A smaller version of our best-selling SD16 line, the SD13S delivers all the durability and reliability of its larger cousin series. With a high power, high efficiency, turbo charged engine featuring a large torque reserve coefficient, the 130 hp SD13S is ready for work. Its extended track ensures low ground pressure, high reliability and strong traction while the comfortable wide visibility hexahedron cab and integrated dashboard design help keep operator productivity at peak levels.



160 HP

SD16 Series

The all-purpose customers' choice.

Shantui's top-selling series comes in a variety of models designed to handle forest, swamp, highland, coal power plant, landfill and conventional construction projects.



SD16 ▲
Use: General

Rated Power: 120kW@1800rpm
 Engine Model: (Europe) Cummins QSC8.3
 (Other Regions) Shangchai SC11CB184G2B1/
 Weichai WD10G178E25
 Operating Weight: 17.0 tons

Product features

SD16

Proven technology cuts through tough environments

Made with advanced technology to get your jobs done in a rich variety of special working circumstances, the 17-ton SD16 features a hydraulic drive system with hydraulic control technology and is powered by a mighty Cummins QSC8.3 engine for European models and Shangchai and Weichai engines for other regions.

Product features

SD16-3(CE)

This cousin of the SD16 is produced specifically for European markets and meets all relevant CE requirements for entry into Europe.

Technical specifications:

| | UNIT | 160 HP | |
|--|----------------|--|--|
| MODEL | | SD16 | SD16-3(CE) |
| LxWxH (Ripper not included) | mm | 5140x3388x3032 | 5140x3388x3032 |
| Operating weight (Ripper not included) | t | 17 | 19.35 |
| Engine | | Shangchai SC11CB184G2B1/ Weichai WD10G178E25 | CUMMINS QSC8.3 |
| Rated power | kW/ rpm | 120/1850 | 120/1800 |
| Gradeability | ° | 30 | 30 |
| Blade type | | Straight tilt blade U blade Angle blade | Straight tilt blade Angle blade |
| Blade width | mm | Straight tilt blade 3388x1149 U blade 3556x1120 Angle blade 3970x1040 | Straight tilt blade 3388x1149 Angle blade 3970x1040 |
| Dozing capacity | m ³ | Straight tilt blade 4.5 U blade 5 Angle blade 4.3 | Straight tilt blade 4.5 Angle blade 4.3 |
| Max. Drop below ground of blade | mm | 540 | 540 |
| Lift height of blade | mm | 1095 | 1095 |
| Ripper type | | Three-shank ripper | Three-shank ripper |
| Ripping depth of ripper | mm | 572 | 572 |
| Lifting height of ripper | mm | 592 | 592 |
| Number of carriers (each side) | | 2 | 2 |
| Number of track rollers (each side) | | 6 | 7 |
| Number of track shoes (each side) | | 37 | 39 |
| Width of track shoe | mm | 510 | 510 |
| Track gauge | mm | 1880 | 1880 |
| Ground length and ground pressure | mm/ MPa | 2430/0.067 | 2430/0.056 |
| Pitch | mm | 203 | 203 |
| Forward speed | km/h | 0-3.29 | 0-3.29 |
| | | 0-5.82 | 0-5.82 |
| | | 0-9.63 | 0-9.63 |
| | | 0-4.28 | 0-4.28 |
| Reverse speed | km/h | 0-7.59 | 0-7.59 |
| | | 0-12.53 | 0-12.53 |

► THE SPECIFICATIONS ARE SUBJECT TO CHANGE WITHOUT NOTICE. THE PICTURES MAY INCLUDE OPTIONS. THE ACTUAL COLOR AND APPEARANCE OF THE PRODUCT MAY DIFFER FROM WHAT IS SHOWN.

160 HP

SD16C

King of coal

Technical specifications:

| 160 HP | | UNIT | |
|---|--|----------------|--|
| SD16C | SD16E | | MODEL |
| 5500x3900x3100 | 5345x3388x3032 | mm | LxWxH (Ripper not included) |
| 16.8 | 17.5 | t | Operating weight (Ripper not included) |
| Shangchai SC11CB184G2B1/ Weichai WD10G178E25 | Shangchai SC11CB184G2B1/ Weichai WD10G178E25 | | Engine |
| 120/1850 | 120/1850 | kW/ rpm | Rated power |
| 30 | 30 | ° | Gradeability |
| U blade | Straight tilt blade U blade Angle blade | | Blade type |
| 3900x1200 | Straight tilt blade 3388x1149 U blade 3556x1120 Angle blade 3970x1040 | mm | Blade width |
| 5 | Straight tilt blade 4.5 U blade 5 Angle blade 4.3 | m ³ | Dozing capacity |
| 530 | 540 | mm | Max. Drop below ground of blade |
| 1095 | 1095 | mm | Lift height of blade |
| Three-shank ripper | Three-shank ripper | | Ripper type |
| 572 | 572 | mm | Ripping depth of ripper |
| 592 | 592 | mm | Lifting height of ripper |
| 2 | 2 | | Number of carriers (each side) |
| 6 | 7 | | Number of track rollers (each side) |
| 37 | 39 | | Number of track shoes (each side) |
| 610 | 560 | mm | Width of track shoe |
| 1880 | 1880 | mm | Track gauge |
| 2430/0.067 | 2635/0.062 | mm/ MPa | Ground length and ground pressure |
| 203.2 | 203.2 | mm | Pitch |
| 0-3.29 | 0-3.29 | km/h | Forward speed |
| 0-5.82 | 0-5.82 | | |
| 0-9.63 | 0-9.63 | | |
| 0-4.28 | 0-4.28 | | |
| 0-7.59 | 0-7.59 | km/h | Reverse speed |
| 0-12.53 | 0-12.53 | | |

► THE SPECIFICATIONS ARE SUBJECT TO CHANGE WITHOUT NOTICE. THE PICTURES MAY INCLUDE OPTIONS. THE ACTUAL COLOR AND APPEARANCE OF THE PRODUCT MAY DIFFER FROM WHAT IS SHOWN.



SD16C ▲
Use: Coal

Rated Power: 120kW@1850rpm
 Engine Model: Shangchai SC11CB184G2B1/
 Weichai WD10G178E25
 Operating Weight: 16.8 tons

Product features

Powered by Shangchai or Weichai engines and featuring advanced technology to get your coal handling jobs done, the 16.8-ton SD16C features a hydraulic drive system with hydraulic control technology and comes equipped with a 3900 x1200 U-blade.

SD16E

Master of the swamp

The SD16E bulldozer has been developed to meet special requirements of certain earth-moving projects. It's equipped with a hydraulic drive system with hydraulic control technology and an advanced structure, providing reliable performance and convenient and flexible operation. The SD16E's extended track makes it suitable for projects requiring low ground pressure.

Rated Power: 120kW@1850rpm
 Engine Model: SC11CB184G2B1/Weichai WD10G178E25
 Operating Weight: 17.5 tons

160 HP

SD16F (Forest)

King of the woods



SD16F ▲
Use: Forest

Rated Power: 120kW@1850rpm
Engine Model: Shangchai SC11CB184G2B1/
Weichai WD10G178E25
Operating Weight: 17.5 tons

Product features

The SD16F forest bulldozer has been developed for operation in forests. The SD16F is equipped with a hydraulic drive system with hydraulic control technology, a front-extending ROPS canopy, and an advanced structure, providing reliable performance and convenient and flexible operation, and easily adapting it to operations in the forest.

SD16H (Highlands)

King of the highlands

The SD16H highland bulldozer has been developed to meet the requirements of operation at high altitudes. The SD16H is equipped with a high altitude engine and a hydraulic drive system with hydraulic control technology, and has an advanced structure, providing reliable performance and convenient and flexible operation. The SD16H also has UV-glass and oxygen cylinders for protection in cold environments, making the SD16H the ideal construction machine for work in high altitudes.

Rated Power: 120kW@1850rpm
Engine Model: Shangchai SC11CB184G2B1/Weichai WD10G178E25
Operating Weight: 17.0 tons

Technical specifications:

| | UNIT | 160 HP | |
|--|----------------|--|--|
| MODEL | | SD16F | SD16H |
| LxWxH (Ripper not included) | mm | 5345x3388x3032 | 5140x3388x3032 |
| Operating weight (Ripper not included) | t | 17.5 | 17 |
| Engine | | Schangchai SC11CB184G2B1/ Weichai WD10G178E25 | Schangchai SC11CB184G2B1/ Weichai WD10G178E25 |
| Rated power | kW/rpm | 120/1850 | 120/1850 |
| Gradeability | ° | 30 | 30 |
| Blade type | | Straight tilt blade U blade Angle blade | Straight tilt blade U blade Angle blade |
| Blade width | mm | Straight tilt blade 3388x1149 U blade 3556 x 1120 Angle blade 3970x1040 | Straight tilt blade 3388x1149 U blade 3556 x 1120 Angle blade 3970x1040 |
| Dozing capacity | m ³ | Straight tilt blade 4.5 U blade 5 Angle blade 4.3 | Straight tilt blade 4.5 U blade 5 Angle blade 4.3 |
| Drop below ground of blade | mm | 540 | 540 |
| Lift height of blade | mm | 1095 | 1095 |
| Ripper type | | Three-shank ripper | Three-shank ripper |
| Ripping depth of ripper | mm | 572 | 572 |
| Lifting height of ripper | mm | 592 | 592 |
| Number of carriers (each side) | | 2 | 2 |
| Number of track rollers (each side) | | 7 | 6 |
| Number of track shoes (each side) | | 39 | 37 |
| Width of track shoe | mm | 560 | 510 |
| Track gauge | mm | 1880 | 1880 |
| Ground length and ground pressure | mm/MPa | 2635/0.062 | 2430/0.067 |
| Pitch | mm | 203.2 | 203.2 |
| Forward speed | km/h | 0-3.29 | 0-3.29 |
| | | 0-5.82 | 0-5.82 |
| | | 0-9.63 | 0-9.63 |
| | | 0-4.28 | 0-4.28 |
| Reverse speed | km/h | 0-7.59 | 0-7.59 |
| | | 0-12.53 | 0-12.53 |
| | | | |

▶ THE SPECIFICATIONS ARE SUBJECT TO CHANGE WITHOUT NOTICE. THE PICTURES MAY INCLUDE OPTIONS. THE ACTUAL COLOR AND APPEARANCE OF THE PRODUCT MAY DIFFER FROM WHAT IS SHOWN.

160 HP

SD16L (Extra Swamp)

Extra power to master the swamp

Technical specifications:

| 160 HP | UNIT | MODEL |
|---------------------------------------|----------------|-------------------------------------|
| SD16L | | |
| 5262x4150x3074 | mm | LxWxH |
| 17.5 | t | Operating weight |
| SC11CB184G2B1/ Weichai WD10G178E25 | | Engine |
| 120/1850 | kW/rpm | Rated power |
| 30 | ° | Gradeability |
| Straight tilt blade | | Blade type |
| 4150x960 | mm | Blade width |
| 3.8 | m ³ | Dozing capacity |
| 485 | mm | Drop below ground of blade |
| 1005 | mm | Lift height of blade |
| 2 | | Number of carriers (each side) |
| 7 | | Number of track rollers (each side) |
| 42 | | Number of track shoes (each side) |
| 1100/950 | mm | Width of track shoe |
| 2300 | mm | Track gauge |
| 2935/0.027 | mm/MPa | Ground length and ground pressure |
| 203.2 | mm | Pitch |
| 0-3.29 | km/h | Forward speed |
| 0-5.82 | | |
| 0-9.63 | | |
| 0-4.28 | | |
| 0-7.59 | km/h | Reverse speed |
| 0-12.53 | | |

▶ THE SPECIFICATIONS ARE SUBJECT TO CHANGE WITHOUT NOTICE. THE PICTURES MAY INCLUDE OPTIONS. THE ACTUAL COLOR AND APPEARANCE OF THE PRODUCT MAY DIFFER FROM WHAT IS SHOWN.



SD16L ▲
Use: Swamp

Rated Power: 120kW@1850rpm
Engine Model: Shangchai SC11CB184G2B1/
Weichai WD10G178E25
Operating weight: 17.5 tons

Product features

The SD16L Extra-Swamp Bulldozer was developed to meet the requirements for operation in wetlands. The SD16L is equipped with a hydraulic drive system with hydraulic control technology and an advanced structure, providing reliable performance and convenient and flexible operation, making the SD16L the ideal construction machine for muddy or wet environments.



160 HP

SD16R (Waste Management)

King of the landfill



SD16R ▲
Use: Waste Management

Rated Power: 120kW@1850rpm
Engine Model: Shanghai SC11CB184G2B1/
Weichai WD10G178E25
Operating weight: 17.7 tons

Product features

To meet the requirements of operation for urban sanitation and rubbish disposal in China, Shantui has developed the SD16R rubbish bulldozer, which can fill, grade, compact and stack materials in landfills. It can also be used for towing dumpsters and other heavy materials found in these environments.

Technical specifications:

| | UNIT | 160 HP |
|--|----------------|--|
| MODEL | | SD16R |
| LxWxH | mm | 5262x4150x3074 |
| Operating weight | t | 17.7 |
| Engine | | Shanghai SC11CB184G2B1/ Weichai WD10G178E25 |
| Rated power | kW/rpm | 120/1850 |
| Gradeability | ° | 30 |
| Blade type | | Straight tilt blade |
| Blade width | mm | 4150x1578 |
| Dozing capacity | m ³ | 3.8 |
| Drop below ground of blade | mm | 485 |
| Lift height of blade | mm | 1005 |
| Number of carriers (each side) | | 2 |
| Number of track rollers (each side) | | 7 |
| Number of track shoes (each side) | | 42 |
| Width of track shoe | mm | 1100 |
| Track gauge | mm | 2300 |
| Ground length and ground pressure | mm/MPa | 2935/0.043 |
| Pitch | mm | 203.2 |
| Forward speed | km/h | 0-3.29 |
| | | 0-5.82 |
| | | 0-9.63 |
| | | 0-4.28 |
| Reverse speed | | 0-7.59 |
| | | 0-12.53 |

▶ THE SPECIFICATIONS ARE SUBJECT TO CHANGE WITHOUT NOTICE. THE PICTURES MAY INCLUDE OPTIONS. THE ACTUAL COLOR AND APPEARANCE OF THE PRODUCT MAY DIFFER FROM WHAT IS SHOWN.

160 HP

SD16T (Mechanical Drive)

Earthmoving might

Technical specifications:

| 160 HP | SD16TL | UNIT | MODEL |
|---|---------------------|----------------|--|
| SD16T | SD16TL | mm | LxWxH (Ripper not included) |
| 6366x3388x3100 | 5262x4150x2950 | | |
| 17 | 18.4 | t | Operating weight (Ripper not included) |
| Shanghai SC11CB184G2B1/ Weichai WD10G178E25 | | | Engine |
| 120/1850 | | kW/rpm | Rated power |
| 30 | | ° | Gradeability |
| Straight tilt blade U blade Angle blade | Straight tilt blade | | Blade type |
| Straight tilt blade 3388x1149 U blade 3556x1120 Angle blade 3970x1040 | 4150x960 | mm | Blade width |
| Straight tilt blade 4.5 U blade 5 Angle blade 4.4 | 3.8 | m ³ | Dozing capacity |
| 530 | 495 | mm | Drop below ground of blade |
| 1095 | 1005 | mm | Lift height of blade |
| Three-shank ripper | | | Ripper type |
| 572 | | mm | Ripping depth of ripper |
| 592 | | mm | Lifting height of ripper |
| 2 | 2 | | Number of carriers (each side) |
| 6 | 7 | | Number of track rollers (each side) |
| 37 | 42 | | Number of track shoes (each side) |
| 510 | 1100 | mm | Width of track shoe |
| 1880 | 2300 | mm | Track gauge |
| 2430/0.067 | 2935/0.027 | mm/MPa | Ground length and ground pressure |
| 203.2 | 203.2 | mm | Pitch |
| 0-2.67 | 0-2.67 | km/h | Forward speed |
| 0-3.76 | 0-3.76 | | |
| 0-5.41 | 0-5.41 | | |
| 0-11.13 | 0-11.13 | | |
| 0-3.48 | 0-3.48 | | |
| 0-4.90 | 0-4.90 | km/h | Reverse speed |
| 0-7.05 | 0-7.05 | | |
| 0-9.92 | 0-9.92 | | |

▶ THE SPECIFICATIONS ARE SUBJECT TO CHANGE WITHOUT NOTICE. THE PICTURES MAY INCLUDE OPTIONS. THE ACTUAL COLOR AND APPEARANCE OF THE PRODUCT MAY DIFFER FROM WHAT IS SHOWN.



SD16T ▲
Use: General
Mechanical Transmission

Rated Power: 120kW@1850rpm
Engine Model: Shanghai SC11CB184G2B1/
Weichai WD10G178E25
Operating weight: 17.0 tons

Product features

The SD16T mechanical bulldozer was developed to meet the requirements of general earth moving projects. It is equipped with a mechanical drive system and an advanced structure, providing reliable performance and convenient and flexible operation, making the SD16T the ideal construction machine for earth moving projects.

SD16TL (Mechanical Drive/Wetlands Use)

More muscle for soggy wetlands

The SD16TL mechanical extra-swamp type bulldozer was developed to meet the requirements for operations in the soggiest of ground conditions. It is equipped with a mechanical drive system and advanced structural properties, providing more reliable performance and convenient and flexible operation. The SD16TL is the ideal construction machine for wetlands, swamps and otherwise damp conditions.

Rated Power: 120kW@1850rpm
Engine Model: Shanghai SC11CB184G2B1/Weichai WD10G178E25
Operating Weight: 18.4 tons



220 HP

SD22 Series

More power, greater efficiency, any environment

Like the SD16, the China National Quality Gold Medal-winning SD22 Series offers a range of task-specific configurations that deliver more power and greater efficiency to get your toughest jobs finished faster.



SD22 ▲
Use: General

Rated Power: 162kW@1800rpm
Engine Model: Cummins NT855-C280S10
Operating Weight: 23.4 tons

Product features

SD22

More power, greater efficiency

The SD22 is a large horsepower, advanced technology bulldozer with a Cummins 855C engine delivering high torque yet low fuel consumption. An exhaust turbocharger ensures uninterrupted performance at altitudes up to 3200m. Hydraulic drive and control technology deliver reliable performance and easy control.

Technical specifications:

| | UNIT | 220 HP |
|--|----------------|---|
| MODEL | | SD22 |
| LxWxH (Ripper not included) | mm | 5750x3725x3395 |
| Operating weight (Ripper not included) | t | 23.4 |
| Engine | | Cummins NT855-C280S10 |
| Rated power | kW/rpm | 162/1800 |
| Gradeability | * | 30 |
| Blade type | | Straight tilt blade U-blade Semi-U blade Angle blade |
| Blade width | mm | Straight tilt blade 3725x1315 U blade 3800x1343 Semi-U blade 3725x1374 Angle blade 4365x1055 |
| Dozing capacity | m ³ | Straight tilt blade 6.4 U blade 7.5 Semi-U blade 7.0 Angle blade 4.7 |
| Drop below ground of blade | mm | 540 |
| Lift height of blade | mm | 1210 |
| Ripper type | | Single ripper Three-shank ripper |
| Ripping depth of ripper | mm | Single ripper 695 Three-shank ripper 666 |
| Lifting height of ripper | mm | Single ripper 515 Three-shank ripper 555 |
| Number of carriers (each side) | | 2 |
| Number of track rollers (each side) | | 6 |
| Number of track shoes (each side) | | 38 |
| Width of track shoe | mm | 560 |
| Track gauge | mm | 2000 |
| Ground length and ground pressure | mm/MPa | 2730/0.077 |
| Pitch | mm | 216 |
| Forward speed | km/h | 0-3.6 |
| | | 0-6.5 |
| | | 0-11.2 |
| | | 0-4.3 |
| Reverse speed | km/h | 0-7.7 |
| | | 0-13.2 |

▶ THE SPECIFICATIONS ARE SUBJECT TO CHANGE WITHOUT NOTICE. THE PICTURES MAY INCLUDE OPTIONS. THE ACTUAL COLOR AND APPEARANCE OF THE PRODUCT MAY DIFFER FROM WHAT IS SHOWN.

220 HP

SD22C (Coal)

Added power for coal operations

Technical specifications:

| 220 HP | UNIT | MODEL |
|--|----------------|---|
| SD22C | | |
| LxWxH (Ripper not included) | mm | 5750x4200x3395 |
| Operating weight (Ripper not included) | t | 24.6 |
| Engine | | Cummins NT855-C280S10 |
| Rated power | kW/rpm | 162/1800 |
| Gradeability | * | 30 |
| Blade type | | Coal blade |
| Blade width | mm | 4200x1350 |
| Dozing capacity | m ³ | 9 |
| Drop below ground of blade | mm | 540 |
| Lift height of blade | mm | 1210 |
| Ripper type | | Single ripper Three-shank ripper |
| Ripping depth of ripper | mm | Single ripper 695 Three-shank ripper 666 |
| Lifting height of ripper | mm | Single ripper 515 Three-shank ripper 555 |
| Number of carriers (each side) | | 2 |
| Number of track rollers (each side) | | 6 |
| Number of track shoes (each side) | | 38 |
| Width of track shoe | mm | 660 |
| Track gauge | mm | 2000 |
| Ground length and ground pressure | mm/MPa | 2730/0.066 |
| Pitch | mm | 216 |
| Forward speed | km/h | 0-3.6 |
| | | 0-6.5 |
| | | 0-11.2 |
| | | 0-4.3 |
| Reverse speed | km/h | 0-7.7 |
| | | 0-13.2 |

▶ THE SPECIFICATIONS ARE SUBJECT TO CHANGE WITHOUT NOTICE. THE PICTURES MAY INCLUDE OPTIONS. THE ACTUAL COLOR AND APPEARANCE OF THE PRODUCT MAY DIFFER FROM WHAT IS SHOWN.



SD22C ▲
Use: Coal

Rated Power: 162kW@1800rpm
Engine Model: Cummins NT855-C280S10
Operating Weight: 24.6 tons

Product features

The SD22C coal bulldozer is a modified form of the SD22, featuring advanced performance, high reliability, low fuel consumption and convenient maintenance. The SD22C has a high-capacity coal-doing blade and is equipped with an engine intake pre-filtering device, helping adapt it to transferring, paving and stacking operations often performed in coal mines and power plant coal yards.



220 HP

SD22D (Desert)

King of the desert



SD22D ▲
Use: Desert

Rated Power: 162kW@1800rpm
Engine Model: Cummins NT855-C280S10
Operating Weight: 25.8 tons

Product features

The SD22D desert bulldozer was developed by Shantui for desert operation. The SD22D features advanced performance, high reliability, low fuel consumption and convenient maintenance. It is equipped with an extended track, reducing ground pressure and giving it excellent maneuverability in the desert. It also has a large capacity radiator and engine intake pre-filter, allowing the SD22D to adapt to high winds and blowing sand, as well as high temperatures, making it perfect for earth moving operations in the desert.

Technical specifications:

| | UNIT | 220 HP |
|--|----------------|-----------------------|
| MODEL | | SD22D |
| LxWxH (Ripper not included) | mm | 6150x4365x3395 |
| Operating weight (Ripper not included) | t | 25.8 |
| Engine | | Cummins NT855-C280S10 |
| Rated power | kW/rpm | 162/1800 |
| Gradeability | ° | 30 |
| Blade type | | Straight tilt blade |
| Blade width | mm | 4365x1248 |
| Dozing capacity | m ³ | 6.8 |
| Drop below ground of blade | mm | 550 |
| Lift height of blade | mm | 1420 |
| Number of carriers (each side) | | 2 |
| Number of track rollers (each side) | | 7 |
| Number of track shoes (each side) | | 41 |
| Width of track shoe | mm | 660 |
| Track gauge | mm | 2000 |
| Ground length and ground pressure | mm/MPa | 3050/0.070 |
| Pitch | mm | 216 |
| Forward speed | km/h | 0-3.6 |
| | | 0-6.5 |
| | | 0-11.2 |
| Reverse speed | km/h | 0-4.3 |
| | | 0-7.7 |
| | | 0-13.2 |

▶ THE SPECIFICATIONS ARE SUBJECT TO CHANGE WITHOUT NOTICE. THE PICTURES MAY INCLUDE OPTIONS. THE ACTUAL COLOR AND APPEARANCE OF THE PRODUCT MAY DIFFER FROM WHAT IS SHOWN.

220 HP

SD22E (Soft Ground)

Works hard on soft ground

Technical specifications:

| 220 HP | UNIT | MODEL |
|--|----------------|---|
| SD22E | | SD22E |
| LxWxH (Ripper not included) | mm | 6000x3725x3332.18 |
| Operating weight (Ripper not included) | t | 24.6 |
| Engine | | Cummins NT855-C280S10 |
| Rated power | kW/rpm | 162/1800 |
| Gradeability | ° | 30 |
| Blade type | | Straight tilt blade U blade Angle blade |
| Blade width | mm | Straight tilt blade 3725x1315 U blade 3800x1343 Angle blade 4365x1055 |
| Dozing capacity | m ³ | Straight tilt blade 6.4 U blade 7.5 Angle blade 4.7 |
| Drop below ground of blade | mm | 538 |
| Lift height of blade | mm | 1210 |
| Ripper type | | Single ripper Three-shank ripper |
| Ripping depth of ripper | mm | Single ripper 695 Three-shank ripper 666 |
| Lifting height of ripper | mm | Single ripper 515 Three-shank ripper 555 |
| Number of carriers (each side) | | 2 |
| Number of track rollers (each side) | | 7 |
| Number of track shoes (each side) | | 41 |
| Width of track shoe | mm | 560 |
| Track gauge | mm | 2000 |
| Ground length and ground pressure | mm/MPa | 3050/0.072 |
| Pitch | mm | 216 |
| Forward speed | km/h | 0-3.6 |
| | | 0-6.5 |
| | | 0-11.2 |
| Reverse speed | km/h | 0-4.3 |
| | | 0-7.7 |
| | | 0-13.2 |

▶ THE SPECIFICATIONS ARE SUBJECT TO CHANGE WITHOUT NOTICE. THE PICTURES MAY INCLUDE OPTIONS. THE ACTUAL COLOR AND APPEARANCE OF THE PRODUCT MAY DIFFER FROM WHAT IS SHOWN.



SD22E ▲
Use: Soft Ground and Muddy Terrain

Rated Power: 162kW@1800rpm
Engine Model: Cummins NT855-C280S10
Operating Weight: 24.6 tons

Product features

The SD22E extended track features advanced performance, high reliability, low fuel consumption and convenient maintenance. The machine has an extended track, increasing the overall length of track on the ground and thereby reducing ground pressure. With excellent maneuverability, the SD22E is well adapted to the earth moving operations on soft ground.



220 HP

SD22F (Forest)

Power for wooded environments



SD22F ▲
Use: Forest

Rated Power: 162kW@1800rpm
Engine Model: Cummins NT855-C280S10
Operating Weight: 23.4 tons

Product features

The SD22F forest type bulldozer is specially designed for operations in wooded areas. The SD22F has advanced performance, high reliability, low fuel consumption and convenient maintenance. It's equipped with a ROPS canopy and cab, a wider track (610 mm) and a mechanical winch. The SD22F has excellent maneuverability and self-rescue capabilities. The SD22F easily adapts to logging, stacking, hauling and transporting work in wooded areas.

Technical specifications:

| | UNIT | 220 HP |
|--|----------------|---|
| MODEL | | SD22F |
| LxWxH (Ripper not included) | mm | 5750x3725x3395 |
| Operating weight (Ripper not included) | t | 23.4 |
| Engine | | Cummins NT855-C280S10 |
| Rated power | kW/rpm | 162/1800 |
| Gradeability | ° | 30 |
| Blade type | | Straight tilt blade |
| Blade width | mm | 3725x1315 |
| Dozing capacity | m ³ | 6.4 |
| Drop below ground of blade | mm | 540 |
| Lift height of blade | mm | 1210 |
| Ripper type | | Single ripper Three-shank ripper |
| Ripping depth of ripper | mm | Single ripper 695 Three-shank ripper 666 |
| Lifting height of ripper | mm | Single ripper 515 Three-shank ripper 555 |
| Number of carriers (each side) | | 2 |
| Number of track rollers (each side) | | 6 |
| Number of track shoes (each side) | | 38 |
| Width of track shoe | mm | 560 |
| Track gauge | mm | 2000 |
| Ground length and ground pressure | mm/MPa | 2730/0.066 |
| Pitch | mm | 216 |
| Forward speed | km/h | 0-3.6 |
| | | 0-6.5 |
| | | 0-11.2 |
| Reverse speed | km/h | 0-4.3 |
| | | 0-7.7 |
| | | 0-13.2 |

▶ THE SPECIFICATIONS ARE SUBJECT TO CHANGE WITHOUT NOTICE. THE PICTURES MAY INCLUDE OPTIONS. THE ACTUAL COLOR AND APPEARANCE OF THE PRODUCT MAY DIFFER FROM WHAT IS SHOWN.

220 HP

SD22R (Waste Management)

King of the larger landfill

Technical specifications:

| 220 HP | | UNIT | |
|-----------------------|---|----------------|--|
| SD22R | SD22G | | MODEL |
| 6290x4365x3435 | 5750x3725x3395 | mm | LxWxH (Ripper not included) |
| 26 | 23.4 | t | Operating weight (Ripper not included) |
| Cummins NT855-C280S10 | | | Engine |
| 162/1800 | | kW/rpm | Rated power |
| 30 | | ° | Gradeability |
| R-blade | Straight tilt blade | | Blade type |
| 4365x1885 | 3725x1315 | mm | Blade width |
| 12 | 6.4 | m ³ | Dozing capacity |
| 550 | 540 | mm | Drop below ground of blade |
| 1330 | 1210 | mm | Lift height of blade |
| (n/a) | Single ripper Three-shank ripper | | Ripper type |
| (n/a) | Single ripper 695 Three-shank ripper 666 | mm | Ripping depth of ripper |
| (n/a) | Single ripper 515 Three-shank ripper 555 | mm | Lifting height of ripper |
| 2 | 2 | | Number of carriers (each side) |
| 8 | 6 | | Number of track rollers (each side) |
| 45 | 38 | | Number of track shoes (each side) |
| 910 | 560 | mm | Width of track shoe |
| 2250 | 2000 | mm | Track gauge |
| 3480/0.041 | 2730/0.077 | mm/MPa | Ground length and ground pressure |
| 216 | 216 | mm | Pitch |
| 0-3.6 | 0-3.6 | km/h | Forward speed |
| 0-6.5 | 0-6.5 | | |
| 0-11.2 | 0-11.2 | | |
| 0-4.3 | 0-4.3 | km/h | Reverse speed |
| 0-7.7 | 0-7.7 | | |
| 0-13.2 | 0-13.2 | | |

▶ THE SPECIFICATIONS ARE SUBJECT TO CHANGE WITHOUT NOTICE. THE PICTURES MAY INCLUDE OPTIONS. THE ACTUAL COLOR AND APPEARANCE OF THE PRODUCT MAY DIFFER FROM WHAT IS SHOWN.



SD22R SD22G OPTION ▲
Use: Waste Management, (G) Low temperatures

Rated Power: 162kW@1800rpm
Engine Model: Cummins NT855-C280S10
Operating Weight: 26.0 tons

Product features

Using a swamp bulldozer track, the SD22R landfill bulldozer is able to reduce ground pressure and has excellent maneuverability, easily adapting it to work in landfills that may contain high liquid capacities. Optional attachments include a high positioning warning lamp, a reverse warning alarm, a camera and an LCD screen, which can all greatly improve safety during operation. It's equipped with a rubbish blade with a large capacity and mud-flaps, which can improve working efficiency. The SD22R has central lubrication, central pressure measurement and automatic track tension systems that contribute to convenient and timely observation and maintenance.

SD22G (Extreme Cold)

The ice king

Rated power: 162kW@1800rpm
Engine model: Cummins NT855-C280S10
Operating weight: 23.4 tons



220 HP

SD22S (Swamp)

King of the wetlands



SD22S ▲
Use: Swamp

Rated Power: 162kW@1800rpm
Engine Model: Cummins NT855-C280S10
Operating Weight: 25.7 tons

Product features

The SD22S swamp bulldozer is specially designed for work in wetlands. The SD22S features advanced performance, high reliability, low fuel consumption and convenient maintenance, as well as being equipped with a 910 mm swamp-type extended track, which reduces ground pressure and improves maneuverability in wet areas. The SD22S easily adapts to earth moving operations in swamps and other wet or muddy environments.

SD22W (Rock)

One tough dozer



SD22W ▲
Use: Rock

Rated Power: 162kW@1800rpm
Engine Model: Cummins NT855-C280S10
Operating Weight: 23.44 tons

Technical specifications:

| MODEL | UNIT | 220 HP | |
|-------------------------------------|----------------|-----------------------|--|
| | | SD22S | SD22W |
| LxWxH | mm | 6060x4365x3435 | 5750x3725x3395 |
| Operating weight | t | 25.7 | 23.44 |
| Engine | | Cummins NT855-C280S10 | Cummins NT855-C280S10 |
| Rated power | kW/rpm | 162/1800 | 162/1800 |
| Gradeability | ° | 30 | 30 |
| Blade type | | Straight tilt blade | Straight tilt blade Angle blade |
| Blade width | mm | 4365x1248 | Straight tilt blade 3725x1315 Angle blade 4365x1055 |
| Dozing capacity | m ³ | 6.8 | Straight tilt blade 6.4 Angle blade 4.7 |
| Drop below ground of blade | mm | 550 | 540 |
| Lift height of blade | mm | 1330 | 1210 |
| Number of carriers (each side) | | 2 | 2 |
| Number of track rollers (each side) | | 8 | 6 |
| Number of track shoes (each side) | | 45 | 38 |
| Width of track shoe | mm | 910 | 560 |
| Track gauge | mm | 2250 | 2000 |
| Ground length and ground pressure | mm/MPa | 3480/0.041 | 2730/0.077 |
| Pitch | mm | 216 | 216 |
| Forward speed | km/h | 0-3.6 | 0-3.6 |
| | | 0-6.5 | 0-6.5 |
| | | 0-11.2 | 0-11.2 |
| Reverse speed | km/h | 0-4.3 | 0-4.3 |
| | | 0-7.7 | 0-7.7 |
| | | 0-13.2 | 0-13.2 |

▶ THE SPECIFICATIONS ARE SUBJECT TO CHANGE WITHOUT NOTICE. THE PICTURES MAY INCLUDE OPTIONS. THE ACTUAL COLOR AND APPEARANCE OF THE PRODUCT MAY DIFFER FROM WHAT IS SHOWN.

Product features

This version of the SD22W has a reinforced undercarriage, arms and blade for the toughest of large obstacle jobs, such as large rocks and boulders. The blade is thicker and the arms plated for greater strength and durability. It is well-suited for heavy mining applications. It is one of Shantui's top sellers in Africa, where large-scale mining is prevalent.

This is one beast that will **lighten your burden.**

The name Shantui has long been synonymous with bulldozers in China. We lead the market in just about every category of volume and share, and have for decades. Today, Shantui is the largest volume manufacturer of dozers in the world.

We offer a complete line of more than 20 dozer types and sizes, from swamp to desert, designed for all tasks, big or small. This includes the entire gamut of extensions for many

other practical uses. Our SD-520-5, at 520 horsepower, is the largest bulldozer ever built in China.

Being the market leader in China is one thing. But being the Value Leader worldwide is our real source of pride. And we will not rest on either of these laurels. *It's the Shantui Way.*

SHANTUI VALUE WORKS FOR YOU.



SHANTUI
VALUE THAT WORKS™

www.shantui.com



230 HP

SD23 Series

Shantui Value shines in larger models that deliver stronger push force for less cost than their nearest competitors.



SD23 ▲
Use: General

Rated Power: 169kW@2000rpm
Engine Model: Cummins NT855-C280S10
Operating Weight: 24.6 tons

Product features

SD23

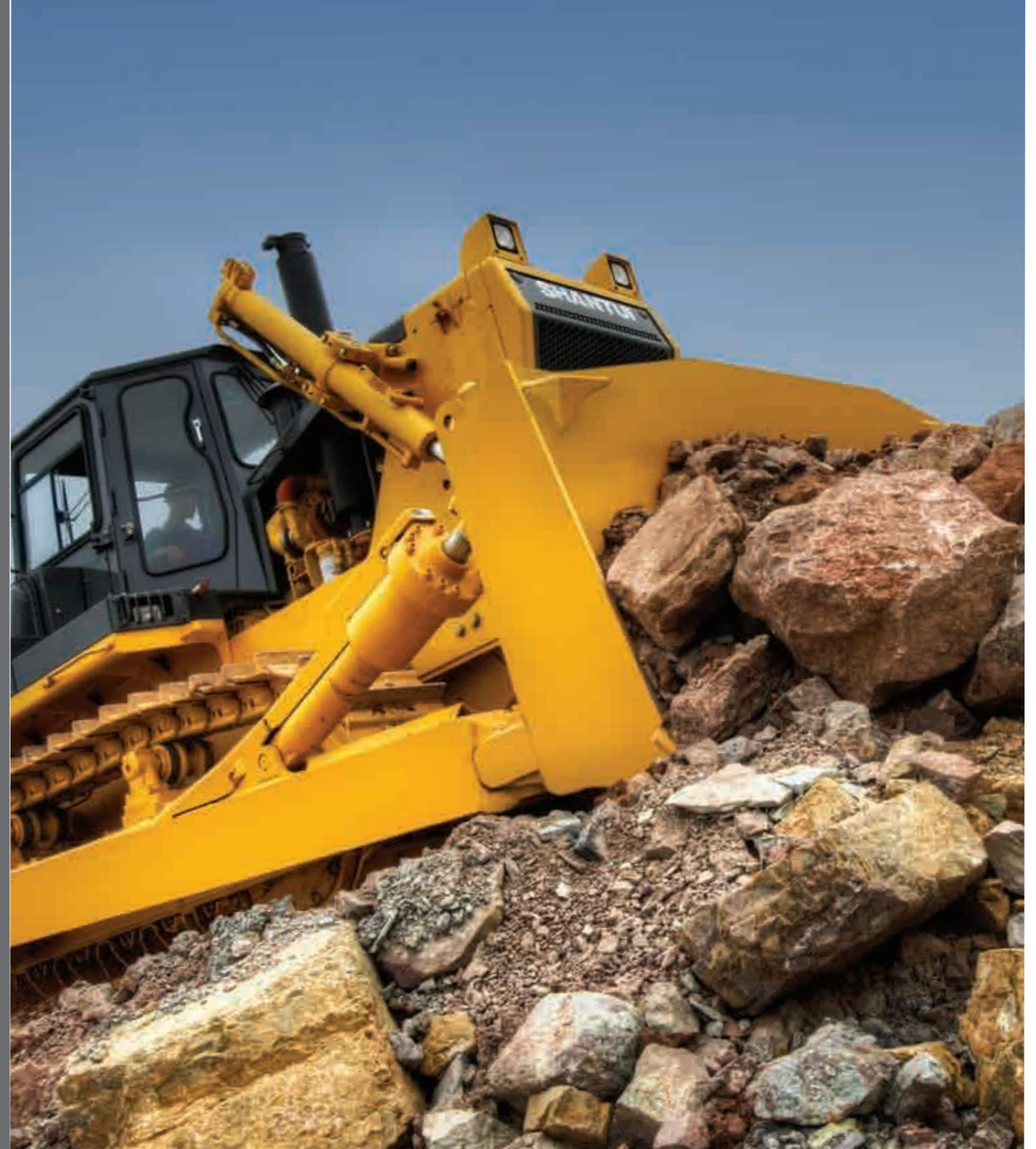
Stronger push force at a lower cost

When the job calls for a larger dozer with more push force, the SD23 delivers power and value.

Technical specifications:

| | UNIT | 230 HP |
|--|----------------|---|
| MODEL | | SD23 |
| LxWxH (Ripper not included) | mm | 5874x3725x3360 |
| Operating weight (Ripper not included) | t | 24.6 |
| Engine | | Cummins NT855-C280S10 |
| Rated power | kW/rpm | 169/2000 |
| Gradeability | * | 30 |
| Blade type | | Straight tilt blade U blade Angle blade |
| Blade width | mm | Straight tilt blade 3725x1395 U blade 3860x1379 Angle blade 4365x1107 |
| Dozing capacity | m ³ | Straight tilt blade 7.8 U blade 8.4 Angle blade 5.4 |
| Drop below ground of blade | mm | 540 |
| Lift height of blade | mm | 1210 |
| Ripper type | | Single ripper Three-shank ripper |
| Ripping depth of ripper | mm | Single ripper 695 Three-shank ripper 666 |
| Lifting height of ripper | mm | Single ripper 515 Three-shank ripper 555 |
| Number of carriers (each side) | | 2 |
| Number of track rollers (each side) | | 7 |
| Number of track shoes (each side) | | 39 |
| Width of track shoe | mm | 560/610/660 |
| Track gauge | mm | 2000 |
| Ground length and ground pressure | mm/MPa | 2840/0.078 |
| Pitch | mm | 216 |
| Forward speed | km/h | 0-3.8 |
| | | 0-6.8 |
| | | 0-11.8 |
| Reverse speed | km/h | 0-4.9 |
| | | 0-8.5 |
| | | 0-14.3 |

THE SPECIFICATIONS ARE SUBJECT TO CHANGE WITHOUT NOTICE. THE PICTURES MAY INCLUDE OPTIONS. THE ACTUAL COLOR AND APPEARANCE OF THE PRODUCT MAY DIFFER FROM WHAT IS SHOWN.



320 HP

SD32 Series

Stronger push force at a lower cost.



320 HP

SD32

High efficiency push factor.

Technical specifications:

| 320 HP | UNIT | MODEL |
|--|----------------|---|
| SD32 | | |
| 6880x4130x3725 | mm | LxWxH (Ripper not included) |
| 37.2 | t | Operating weight (Ripper not included) |
| Cummins NTA855-C360S10 | | Engine |
| 235/2000 | kW/rpm | Rated power |
| 30 | - | Gradeability |
| Straight tilt blade Semi-U blade Angle blade | | Blade type |
| Straight tilt blade 4130x1590 Semi-U blade 4030x1720 Angle blade 5000x1140 | mm | Blade width |
| Straight tilt blade 10 Semi-U blade 11.9 Angle blade 6 | m ³ | Dozing capacity |
| 560 | mm | Drop below ground of blade |
| 1560 | mm | Lift height of blade |
| Single ripper Three-shank ripper | | Ripper type |
| Single ripper 1250 Three-shank ripper 842 | mm | Ripping depth of ripper |
| Single ripper 955 Three-shank ripper 883 | mm | Lifting height of ripper |
| 2 | | Number of carriers (each side) |
| 7 | | Number of track rollers (each side) |
| 41 | | Number of track shoes (each side) |
| 560 | mm | Width of track shoe |
| 2140 | mm | Track gauge |
| 3150/0.105 | mm/MPa | Ground length and ground pressure |
| 228.6 | mm | Pitch |
| 0-3.6 | km/h | Forward speed |
| 0-6.6 | | |
| 0-11.5 | | |
| 0-4.4 | | |
| 0-7.8 | | |
| 0-13.5 | | Reverse speed |

▶ THE SPECIFICATIONS ARE SUBJECT TO CHANGE WITHOUT NOTICE. THE PICTURES MAY INCLUDE OPTIONS. THE ACTUAL COLOR AND APPEARANCE OF THE PRODUCT MAY DIFFER FROM WHAT IS SHOWN.



SD32 ▲
Use: General

Rated Power: 235kW@2000rpm
Engine Model: Cummins NTA855-C360S10
Operating Weight: 37.2 tons

Product features

The SD32 provides a showcase for Shantui's prowess with high efficiency push factors. These medium size, but heavy-duty machines designed for earth-moving projects get the biggest, toughest jobs done quickly and efficiently. SD32s are equipped with a hydraulic drive system with hydraulic control technology and an advanced structure, which provides reliable performance and convenient and flexible operation.

320 HP

SD32D (Desert)

High efficiency push factor for desert jobs



SD32D ▲
Use: Desert

Rated Power: 235kW@2000rpm
Engine Model: Cummins NTA855-C360S10
Operating Weight: 37.2 tons

Product features

Based on the SD32 bulldozer, the SD32D desert bulldozer was developed by Shantui for desert operation. The SD32D is equipped with a hydraulic drive system with hydraulic control technology and an advanced structure, providing reliable performance and convenient and flexible operation. Specially fitted with a desert radiator and air filter, the SD32D is well adapted to the desert operations.

Technical specifications:

| | UNIT | 320 HP |
|--|----------------|--|
| MODEL | | SD32D |
| LxWxH (Ripper not included) | mm | 6880x4130x3725 |
| Operating weight (Ripper not included) | t | 37.2 |
| Engine | | Cummins NTA855-C360S10 |
| Rated power | kW/rpm | 235/2000 |
| Gradeability | * | 30 |
| Blade type | | Straight tilt blade Semi-U blade Angle blade |
| Blade width | mm | Straight tilt blade 4130x1590 Semi-U blade 4030x1720 Angle blade 5000x1140 |
| Dozing capacity | m ³ | Straight tilt blade 10 Semi-U blade 11.9 Angle blade 6 |
| Drop below ground of blade | mm | 560 |
| Lift height of blade | mm | 1560 |
| Ripper type | | Single ripper Three-shank rippe |
| Ripping depth of ripper | mm | Single ripper 1250 Three-shank ripper 842 |
| Lifting height of ripper | mm | Single ripper 955 Three-shank ripper 883 |
| Number of carriers (each side) | | 2 |
| Number of track rollers (each side) | | 7 |
| Number of track shoes (each side) | | 41 |
| Width of track shoe | mm | 760 |
| Track gauge | mm | 2140 |
| Ground length and ground pressure | mm/MPa | 3150/0.076 |
| Pitch | mm | 228.6 |
| Forward speed | km/h | 0-3.6 |
| | | 0-6.6 |
| | | 0-11.5 |
| | | 0-4.4 |
| Reverse speed | km/h | 0-7.8 |
| | | 0-13.5 |

▶ THE SPECIFICATIONS ARE SUBJECT TO CHANGE WITHOUT NOTICE. THE PICTURES MAY INCLUDE OPTIONS. THE ACTUAL COLOR AND APPEARANCE OF THE PRODUCT MAY DIFFER FROM WHAT IS SHOWN.

320 HP

SD32W (Rock)

High efficiency push factor for moving rock and ice

Technical specifications:

| 320 HP | UNIT | |
|--|----------------|--|
| SD32W | | MODEL |
| 6880x4130x2725 | mm | LxWxH (Ripper not included) |
| 38 | t | Operating weight (Ripper not included) |
| Cummins NTA855-C360S10 | | Engine |
| 235/2000 | kW/rpm | Rated power |
| 30 | * | Gradeability |
| Straight tilt blade | | Blade type |
| 4130x1590 | mm | Blade width |
| 10 | m ³ | Dozing capacity |
| 560 | mm | Drop below ground of blade |
| 1560 | mm | Lift height of blade |
| Single ripper Three-shank ripper | | Ripper type |
| Single ripper 1250 Three-shank ripper 842 | mm | Ripping depth of ripper |
| Single ripper 955 Three-shank ripper 883 | mm | Lifting height of ripper |
| 2 | | Number of carriers (each side) |
| 7 | | Number of track rollers (each side) |
| 41 | | Number of track shoes (each side) |
| 560 | mm | Width of track shoe |
| 2140 | mm | Track gauge |
| 3150/0.105 | mm/MPa | Ground length and ground pressure |
| 228.6 | mm | Pitch |
| 0-3.6 | km/h | Forward speed |
| 0-6.6 | | |
| 0-11.5 | | |
| 0-4.4 | | |
| 0-7.8 | km/h | Reverse speed |
| 0-13.5 | | |

▶ THE SPECIFICATIONS ARE SUBJECT TO CHANGE WITHOUT NOTICE. THE PICTURES MAY INCLUDE OPTIONS. THE ACTUAL COLOR AND APPEARANCE OF THE PRODUCT MAY DIFFER FROM WHAT IS SHOWN.



SD32W ▲
Use: Mining

Rated Power: 235kW@2000rpm
Engine Model: Cummins NTA855-C360S10
Operating Weight: 38.0 tons

Product features

The SD32W rock bulldozer is specially designed for operation in tough working conditions with hard rock and frozen earth. It is equipped with a hydraulic drive system with hydraulic control technology, and an advanced structure, providing reliable performance and convenient and flexible operation. It also has a rock-type track and blade, allowing the SD32W to adapt to the heavy condition necessary when working with hard rock and frozen earth.



420 HP

SD42 Series

Big Value That Works!



SD42-3 ▲
Use: General

Rated Power: 310kW@2000rpm
Engine Model: Cummins KTA19-C525
Operating Weight: 53.0 tons

Product features

SD42-3

Monster push force at a lower cost.

The SD42 is a monster machine that challenges the competition head-on with its international class roller suspension and muscular push/pull power. Mainly used in large mine projects, the SD42-3 has the power to adapt to tough working conditions. Top features include single-hand, electronic-control gearshift and steering systems, ROPS and FOPS as well as central pressure measurement, central lubrication and automatic track tensioning.

Technical specifications:

| | UNIT | 420 HP |
|-------------------------------------|----------------|--------------------|
| MODEL | | SD42-3 |
| LxWxH (Ripper included) | mm | 9630x4315x3955 |
| Operating weight (Ripper included) | t | 53 |
| Engine | | Cummins KTA19-C525 |
| Rated power | kW/rpm | 310/2000 |
| Gradeability | ° | 30 |
| Blade type | | Semi-U blade |
| Blade width | mm | 4315x1875 |
| Dozing capacity | m ³ | 16 |
| Drop below ground of blade | mm | 700 |
| Lift height of blade | mm | 1545 |
| Ripper type | | Single ripper |
| Ripping depth of ripper | mm | 1400 |
| Lifting height of ripper | mm | 1130 |
| Number of carriers (each side) | | 2 |
| Number of track rollers (each side) | | 7 |
| Number of track shoes (each side) | | 41 |
| Width of track shoe | mm | 610 |
| Track gauge | mm | 2260 |
| Ground length and ground pressure | mm/MPa | 3560/0.123 |
| Pitch | mm | 260.35 |
| Forward speed | km/h | 0-3.7 |
| | | 0-6.8 |
| | | 0-12.2 |
| Reverse speed | km/h | 0-4.4 |
| | | 0-8.2 |
| | | 0-14.8 |

► THE SPECIFICATIONS ARE SUBJECT TO CHANGE WITHOUT NOTICE. THE PICTURES MAY INCLUDE OPTIONS. THE ACTUAL COLOR AND APPEARANCE OF THE PRODUCT MAY DIFFER FROM WHAT IS SHOWN.

520 HP

SD52 Series

Big Value That Works!

Goliath, the largest bulldozer ever made in China!

Technical specifications:

| | UNIT | |
|-------------------------------------|----------------|-----------------|
| 520 HP | | MODEL |
| SD52-5 | | SD52-5 |
| LxWxH (Ripper included) | mm | 10420x4680x4470 |
| Operating weight (Ripper included) | t | 67.5 |
| Engine | | Cummins QSK19 |
| Rated power | kW/rpm | 392/1800 |
| Gradeability | ° | 30 |
| Blade type | | Semi-U blade |
| Blade width | mm | 4695x2265 |
| Dozing capacity | m ³ | 18.5 |
| Drop below ground of blade | mm | 720 |
| Lift height of blade | mm | 1660 |
| Ripper type | | Single ripper |
| Ripping depth of ripper | mm | 1435 |
| Lifting height of ripper | mm | 1105 |
| Number of carriers (each side) | | 2 |
| Number of track rollers (each side) | | 7 |
| Number of track shoes (each side) | | 40 |
| Width of track shoe | mm | 610 |
| Track gauge | mm | 2500 |
| Ground length and ground pressure | mm/MPa | 3940/0.138 |
| Pitch | mm | 280 |
| Forward speed | km/h | 0-3.8 |
| | | 0-6.8 |
| | | 0-11.8 |
| Reverse speed | km/h | 0-5.1 |
| | | 0-9.2 |
| | | 0-15.8 |

► THE SPECIFICATIONS ARE SUBJECT TO CHANGE WITHOUT NOTICE. THE PICTURES MAY INCLUDE OPTIONS. THE ACTUAL COLOR AND APPEARANCE OF THE PRODUCT MAY DIFFER FROM WHAT IS SHOWN.



SD52-5 ▲
Use: Coal

Rated Power: 392kW@1800rpm
Engine Model: Cummins QSK19
Operating Weight: 67.5 tons

Product features

SD52-5

(Produced by special order)

Truly awesome!

The SD52-5 is the largest bulldozer ever produced in China. You've got to see its size and power with your own eyes to believe it! SD52-5 features modular design for easy disassembly and speedy repair. Its powerful air-cooled, electronically control low fuel consumption engine complies with Euro III emission standards and delivers world class failsafe, systems testing, noise isolation, control and comfort features for operator safety and productivity.

KINGS OF THE HILL

Value Ready to Work for You

Shantui Trimming Dozers

Highly efficient Shantui Trimming Dozers are equipped with a power transmission and have flexible and convenient operating systems. They're ready to go to work for your tasks at a wide range of work sites for materials handling and trimming at ports and diffuse materials work at power plants and wharfs.

▼ TRIMMING DOZERS



SB08E



SB11



SB11S



SB13

80 HP

SB08 Series

Compact power for 'sticky' situations

Technical specifications:

| MODEL: | SB08E-3 | SB08S |
|---|--------------------|-------|
| Operating weight (kg) | 8000 | 7922 |
| Engine | Weichai WP4G90E235 | |
| Rated power (kW) | 55 | 58.8 |
| MPa | 0.044 | 0.031 |
| Length (mm) | 4665 | 4728 |
| Width (mm) | 2200 | 2780 |
| Height (mm) | 2669 | 2000 |
| Length of trimming blade (mm) | 2200 | 2780 |
| Width of trimming blade (mm) | 750 | 750 |
| Maximum lifting height of trimming blade (mm) | 1495 | 1560 |
| Maximum digging depth | 652 | 645 |
| Blade Capacity (m³) | 1.24 | 1.56 |

▶ THE SPECIFICATIONS ARE SUBJECT TO CHANGE WITHOUT NOTICE. THE PICTURES MAY INCLUDE OPTIONS. THE ACTUAL COLOR AND APPEARANCE OF THE PRODUCT MAY DIFFER FROM WHAT IS SHOWN.



SB08E-3 ▲

Use: Muddy Terrain

This model also comes in a swamp track version, the SB08S.

Rated Power: 55 kW
 Engine Model: Weichai WP4G90E235
 Operating Weight: 8.0 tons

Product features

SB08E-3

The mud master

Shantui power and Shantui value come together in this compact trimmer designed to deliver results without getting bogged down in muddy terrain.

SB08S

The swamp master

Shantui power and Shantui value come together in this compact trimmer designed to deliver without getting bogged down in swampy terrain.

Rated Power: 58.8 kW
 Engine Model: DEUTZ TD226B-4
 Operating Weight: 7.9 tons

110 HP

SB11 Series

More trimming power for all terrains



SB11 ▲
Use: General

Rated Power: 78 kW
Engine Model: DEUTZ TD226B-6
Operating Weight: 11.9 tons

Technical specifications:

| MODEL: | SB11 | SB11S |
|---|----------|----------|
| Operating weight (kg) | 11870 | 12820 |
| Engine | TD226B-6 | TD226B-6 |
| Rated power (kW) | 78 | 78 |
| MPa | 0.062 | 0.042 |
| Length (mm) | 5110 | 5460 |
| Width (mm) | 2736 | 3176 |
| Height (mm) | 2785 | 2795 |
| Length of trimming blade (mm) | 2736 | 3176 |
| Width of trimming blade (mm) | 885 | 750 |
| Maximum lifting height of trimming blade (mm) | 1020 | 1020 |
| Maximum digging depth | 670 | 670 |
| Blade Capacity (m ³) | 2.14 | 1.8 |

▶ THE SPECIFICATIONS ARE SUBJECT TO CHANGE WITHOUT NOTICE. THE PICTURES MAY INCLUDE OPTIONS. THE ACTUAL COLOR AND APPEARANCE OF THE PRODUCT MAY DIFFER FROM WHAT IS SHOWN.

Product features

SB11

Larger general use trimmer

With a low fuel consuming and high torque reserve coefficient engine, the SB11 trimming dozer features highly efficient working capabilities and reliable performance.

SB11S

Larger swamp trimmer

With a low fuel consuming and high torque reserve coefficient engine, the SB11S trimming dozer features highly efficient working capabilities and reliable performance. It has convenient and flexible operation, due to the power shift transmission, and is fitted with a widened track to decrease ground pressure. SB11S trimming dozers are equipped with an extended track making them suitable for excavating, transporting, and backfilling in earth moving projects requiring low ground pressure in swampy areas.

Rated Power: 58.8 kW
Engine Model: DEUTZ TD226B-4
Operating Weight: 12.8 tons

130 HP

SB13 Series

Power, control and value

Technical specifications:

| MODEL: | SB13 |
|---|-------------|
| Operating weight (kg) | 14700 |
| Engine | SC8D143G2B1 |
| Rated power (kW) | 95.5 |
| MPa | 0.067 |
| Length (mm) | 5470 |
| Width (mm) | 2908 |
| Height (mm) | 2520 |
| Length of trimming blade (mm) | 2908 |
| Width of trimming blade (mm) | 930 |
| Maximum lifting height of trimming blade (mm) | 1630 |
| Maximum digging depth | 710 |
| Blade Capacity (m ³) | 2.52 |

▶ THE SPECIFICATIONS ARE SUBJECT TO CHANGE WITHOUT NOTICE. THE PICTURES MAY INCLUDE OPTIONS. THE ACTUAL COLOR AND APPEARANCE OF THE PRODUCT MAY DIFFER FROM WHAT IS SHOWN.



SB13 ▲
Use: General

Rated Power: 95.5 kW
Engine Model: SC8D143G2B1
Operating Weight: 14.7 tons

Product features

SB13

Maximum trimming power

Weighing in at 14.7 tons, the SB13 with its power transmission and convenient operating systems is ready for big indoor and outdoor jobs that demand power combined with a tight turning radius.



DOZER PARTS AND COMPONENTS

A key element in **Shantui Value**

How Shantui's dominant position in the production of all types of parts and components for construction machinery adds up to more **VALUE** for you.

Shantui actually makes its own structural parts, including arms, tracks, undercarriages, roller sets, buckets, and also makes its own transmissions, torque converters and much more for a wide range of construction machinery products.

Unlike most competitors in China, Shantui doesn't just assemble machines—we build them from scratch. Many of Shantui's competitors in China and around the world—are also its customers when it comes to parts. It's one more reason why Shantui delivers better value in its finished products.

SHANTUI PARTS WITHSTAND STRESS—SO YOU DON'T HAVE TO!

Shantui manufactures many of our lines' structural parts—undercarriage, tracks, buckets, roller sets, torque converters, transmissions and more—in house.

That means better quality control for our bulldozers and a better price for you.

Parts and components—The Shantui Way.



Easy installation.

Simple design makes for easy cleaning, mounting and dismantling of the main links, assuring reliability and high endurance.

High-temp, inductive hard surfaces ensure the best strength and superior wear-resistance.

Crack-proof.

When the bushing material is cold extruded, the steel fibers in it are evenly distributed. Carburization then ensures sufficient core hardness and wear-resistance of the surface.

Strength.

Special heat treatment and quenching ensures the strong wear-resistance of the pin shaft for anti-bump, anti-stress and consistent strength, which is critical to the process.

All-around adaptability.

Track shoes include single-tooth, double-tooth, as well as swamp type, to meet all varieties of work conditions, with strong wear-resistance and enduring performance.

Transmissions.

At Shantui, we make our own transmissions for our many lines. This is a key component in our vertical integration, further contributing to our trademark value proposition.



DOZER PARTS AND COMPONENTS

Engine Options

The right engine to get the job done. Within Shantui's Bulldozer series, engine type and manufacturer is the primary differentiating factor among models.

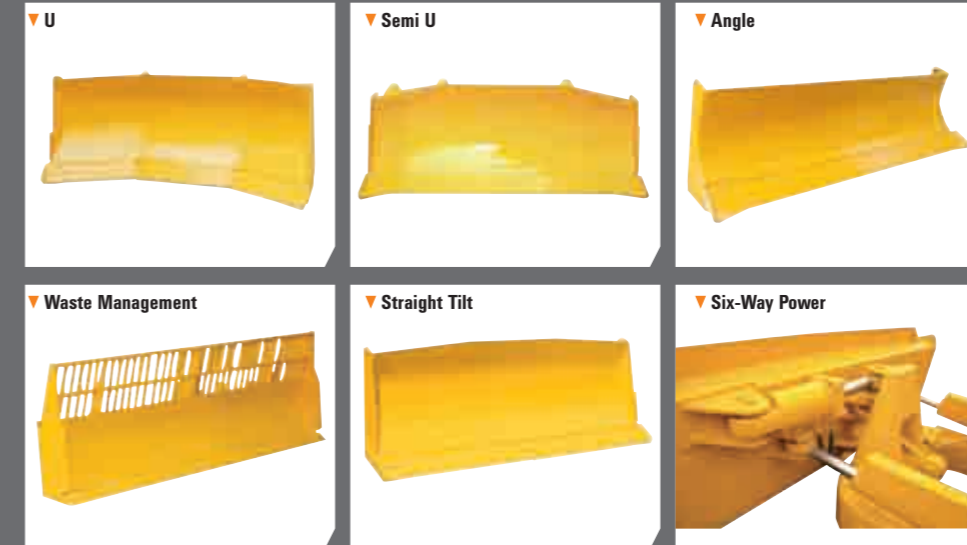
Shantui offers a rich variety of excellent engine choices to deliver the power, durability and value customers need to get the job done. Shantui Bulldozers feature engines from Weichai Power, Weichai Deutz, Cummins, Shangchai, and more.



DOZER PARTS AND COMPONENTS

Blades

Shantui offers a wide variety of blades to get the job done.



Rippers/Winches

Tear through the toughest jobs.



Cabins

Cabin choices that fit operating conditions and enhance productivity.



Pipelayer Series

KINGS OF THE PIPELINE

Easy decision, hard choices

The decision to enter the pipelayer market in 1999 was an easy one for Shantui.

After all, pipelayers are a natural offshoot of Shantui's King of the Hill bulldozers... 'cousins,' you might say.

But the 'how' was a harder choice. Some might slap together parts, snap those parts on a bulldozer and create a 'Frankenstein' pipe layer.

Instead, Shantui devoted considerable brainpower and resources to create a new genre of pipelayers, specialized machines as powerful, rugged and durable as the Shantui bulldozer.

Thirteen years later—after laying enough pipeline to crisscross China—those first Shantui pipelayers are still hard at work! That's a lot of pipe...and a lot of Shantui Value.

PIPE LAYERS



SP25Y Series

Kings of the Pipeline

Technical specifications:

| MODEL: | SP25Y | SP25YL |
|------------------------|--|----------------|
| Engine | Shanghai SC11CB184G2B1/ Weichai WD10G178E25 | |
| Rated power | 120kW/1850rpm | |
| Maximum lifting weight | 25 t | |
| Operating weight | 22000kg | 23500kg |
| L×W×H (mm) | 4135x3050x3014 | 4385x3996x3028 |
| Minimum turning radius | 2950mm | 3300mm |
| Track gauge | 2050mm | 2300mm |
| Ground length | 2635mm | 2935mm |
| Track shoe width | 560mm (610mm) | 1100mm |
| Ground pressure | 0.07MPa (560mm) (0.065MPa) 610mm | 0.036MPa |
| Maximum lifting height | 4400mm | 4400mm |
| Boom swing amplitude | 1.2-5.7m (5.5m Boom) 1.2-6.3m (6.1m Boom) | 1.47-5.7m |
| Hook speed | 0-12.0m/min | |
| Boom length | 5.5m (Optional 6.1m) | |

▶ THE SPECIFICATIONS ARE SUBJECT TO CHANGE WITHOUT NOTICE. THE PICTURES MAY INCLUDE OPTIONS. THE ACTUAL COLOR AND APPEARANCE OF THE PRODUCT MAY DIFFER FROM WHAT IS SHOWN.

SP25Y ▶



Rated Power: 120kW@1850rpm
Engine: Shanghai SC11CB184G2B1/
Weichai WD10G178E25
Maximum Lifting Weight: 25 tons

Product features

SP25Y

Lifts 25-ton loads

Delivering power, lift and value, the SP25Y features load feedback, overload prevention, anti-rollover protection and precise controls.

SP25YL

Delivering power, lift and value plus a tighter turning radius, the SP25YL features a Weichai engine, load feedback, overload prevention, anti-rollover protection and precise controls.

Rated Power: 120kW@1850rpm
Engine: Shanghai SC11CB184G2B1/Weichai WD10G178E25
Maximum Lifting Weight: 25 tons

SP45Y Series

Kings of the Pipeline

SP45Y ▶



Rated Power: 169kW@2000rpm
 Engine: Cummins NT855-C280S10
 Maximum Lifting Capability: 45 tons

Product features

SP45Y

Lifts 45-ton loads

Delivering maximum power, lift and value plus a tighter turning radius, the SP45Y features a Cummins engine, load feedback, overload prevention, anti-rollover protection and precise controls.

SP45YS

Delivering maximum power, lift and value, the SP45YS features a Cummins engine, load feedback, overload prevention, anti-rollover protection and precise controls.

Rated Power: 169kW@2000rpm
 Engine: Cummins NT855-C280S10
 Maximum Lifting Capability: 45 tons

Technical specifications:

| MODEL: | SP45Y | SP45YS |
|------------------------|-----------------------------|----------------------------|
| Engine | Cummins NT855-C280S10 | |
| Rated power | 169kW/2000rpm | |
| Maximum lifting weight | 45 t | |
| Operating weight | 34000kg | 34800kg |
| L×W×H (mm) | 4750x3700x3360 | 4750x4400x3375 |
| Minimum turning radius | 3200mm | 3600mm |
| Track gauge | 2250mm | 2550mm |
| Ground length | 3050mm | 3480mm |
| Track shoe width | 610mm (660mm) | 910mm (1050mm) |
| Ground pressure | 0.086MPa (0.078MPa) (660mm) | 0.015MPa (0.046MPa) (1050) |
| Maximum lifting height | 5250mm(6.5m) | |
| Boom swing amplitude | 1.2-6.65m | 1.4-6.9m |
| Hook speed | 0-0.6m/min | |
| Boom length | 6.5m(9m Optional) | |

▶ THE SPECIFICATIONS ARE SUBJECT TO CHANGE WITHOUT NOTICE. THE PICTURES MAY INCLUDE OPTIONS. THE ACTUAL COLOR AND APPEARANCE OF THE PRODUCT MAY DIFFER FROM WHAT IS SHOWN.

SP70Y Series

Kings of the Pipeline

Technical specifications:

| MODEL: | SP70Y |
|------------------------|--------------------------------|
| Engine | Cummins NTA855-C360S10 |
| Rated power | 235kW/2000rpm |
| Maximum lifting weight | 70 t |
| Operating weight | 47500kg |
| L×W×H (mm) | 5560x3700x3395 |
| Minimum turning radius | 3950mm |
| Track gauge | 2380mm |
| Ground length | 3620mm |
| Track shoe width | 760mm |
| Ground pressure | 0.086MPa |
| Maximum lifting height | 6550mm (8150mm (9.0m Boom)) |
| Boom swing amplitude | 1.2-7.2m (1.2-8.8m(9.0m Boom)) |
| Hook speed | 0-6.0m/min |
| Boom length | 7.3m (9.0m Optional) |

▶ THE SPECIFICATIONS ARE SUBJECT TO CHANGE WITHOUT NOTICE. THE PICTURES MAY INCLUDE OPTIONS. THE ACTUAL COLOR AND APPEARANCE OF THE PRODUCT MAY DIFFER FROM WHAT IS SHOWN.

SP70Y ▶



Rated Power: 235kW@2000rpm
 Engine: Cummins NTA855-C360S10
 Maximum Lifting Capability: 70 tons

Product features

SP70Y

70-ton lifting capacity

Delivering ultimate power, lift and value, the SP70Y features a Cummins engine, load feedback, overload prevention, anti-rollover protection and precise controls.



OUR GLOBAL SALES AND SERVICE NETWORK

Shantui's global sales and service network now covers more than 120 countries and territories around the world.

Shantui made history in China with its Anytime, Anywhere Service. Today, Shantui is extending that pledge around the world. Wherever Shantui products are sold, our service network offers local training, a mature parts delivery system and superlative service.

THAT'S THE SHANTUI WAY!

Today Shantui value—Value That Works—can be found in a broadly diversified product line that includes the mighty bulldozer as well as pipelayers, rollers, compactors, graders, wheel loaders, excavators, concrete mixer trucks, concrete pump trucks, concrete pump trailers, truck-mounted line pumps and forklifts.

Contact your local Shantui distributor or dealer to learn more about the ways that Shantui brings value to a wide range of construction and concrete handling projects.



THE FIVE SHANTUI PRINCIPLES OF SERVICE

Service—The Shantui Way

1. A customer's time is precious.

We get it! Time is money. Shantui's service team puts you the customer first. We're committed to resolve all your machinery problems quickly. With the support of 31 agencies and 23 offices distributed all over China and now even more around the world, Shantui has a complete after-sales service network and an unparalleled array of service equipment. With a team of more than 300 service engineers, a special hotline and a computer ERP information management system, we're committed to meet and exceed your service expectations.

2. Create customer value

You purchase Shantui products to earn profit and obtain value. Our service people bring comprehensive service abilities to each customer and guide you in mastering the

operation, maintenance and repair of Shantui machines. We work with you so Shantui products work for you!

3. "Shantui service, anytime, anywhere"

Our goal: To make Shantui service a reality—anytime and anywhere.

4. It's all about you!

Centered on customer needs, Shantui has developed training programs, a technical enquiry system, customer visits, key project special services (free special coating service, on-site service, extended on-site service), so you know you've purchased not only a machine, but a complete service network.

5. Proactive service

Shantui service is proactive in all customer dealings. We come to you work site quickly and provide thorough, timely and quick service to save time and create value for you. That's The Shantui Way.

One last word...
Bulldozers may be the beginning of the Shantui story, but the tale doesn't end there.

Today Shantui value—Value That Works—can be found in a broadly diversified product line that includes the mighty bulldozer as well as pipelayers, rollers, compactors, graders, wheel loaders, excavators, concrete mixer trucks, concrete pump trucks, concrete pump trailers, truck-mounted line pumps and forklifts.

Contact your local Shantui distributor or dealer to learn more about the ways Shantui brings value to you in a wide range of construction and concrete handling equipment.

**SHANTUI VALUE, AND VALUES,
ADD UP TO THE SHANTUI WAY.**



SHANTUI
SHANTUI
SHANTUI
SHANTUI
SHANTUI

SHANTUI[®]
VALUE THAT WORKSSM

WWW.SHANTUI.COM



China's King of The Hill never rests on his laurels.

In China, Shantui's name is synonymous with bulldozers. In fact, we have been King of the Hill for decades, and now our dozers have cleared the way for our growth in offering a complete line of construction machinery and cement handling equipment.

While diversification and internationalization are both key strategies, our main focus remains on Shantui Value. Shantui offers a unique balance of performance and price that no one else can deliver. And, we never stray from the cultural values that have made us a Top China Brand, and one of China's leading multinational firms. *It's the Shantui Way.*

SHANTUI VALUE WORKS.

