

# 972H

## Wheel Loader



### Engine

Engine Model	Cat® C13 ACERT™	
Gross Power – SAE J1995	232 kW	311 hp
Net Power – ISO 9249	214 kW	287 hp
• Caterpillar engine with ACERT™ Technology – EPA Tier III, EU Stage III Compliant		

### Buckets

Bucket Capacities	3.8-4.6 m <sup>3</sup>	5.0-6.0 yd <sup>3</sup>
-------------------	------------------------	-------------------------

### Weights

Operating Weight	25 148 kg	55,451 lb
• For 4.6 m <sup>3</sup> (6.0 yd <sup>3</sup> ) general purpose bucket with BOCE		

### Operating Specifications

Static Tipping Load, Full Turn	16 903 kg	37,271 lb
• For 4.6 m <sup>3</sup> (6.0 yd <sup>3</sup> ) general purpose bucket with BOCE		

# 972H Wheel Loader

Cat® H-Series Wheel Loaders – The New Standard For Midsize Loaders

---

## RELIABILITY

- Proven Components And Technology Equal Proven Reliability
- Diagnostic Systems Monitor Product Health To Ensure Reliability
- Unmatched Parts Availability And Dealer Support **pg. 4**

---

## SERVICEABILITY

- Service Centers For Convenient Maintenance
- Exceptional Access To Service Points
- Monitoring Systems And Dealer Support Reduce Unexpected Downtime **pg. 16**

---

## DURABILITY

- ACERT™ Technology Maintains Performance, Efficiency And Durability While Meeting Emissions Regulations
- Heavy Duty Components Stand Up To All Operating Conditions
- Strong, Solid Structures Built To Last **pg. 6**

---

## PRODUCTIVITY

- Improved Cycle Times With Load-Sensing Hydraulic System
- Constant Net Horsepower Through The Operating Range
- Aggregate Autodig Automates The Loading Process **pg. 8**

*Performance you can feel with the capability to work in the most demanding applications. Unmatched operator comfort and efficiency in a world class cab. Revolutionary electronics and hydraulics for low-effort operation. Increased productivity with lower owning and operating costs.*





---

## VERSATILITY

- Special Machine Arrangements For Specialized Applications
- Large Variety Of Cat® Work Tools **pg. 10**

---

## OPERATOR COMFORT

- Easy Entry And Exit
- Excellent Visibility
- Comfortable Environment With Controlled Vibration
- Choice Of Steering And Implement Control Systems **pg. 12**

---

## OWNING AND OPERATING COSTS

- Proven Fuel Efficiency
- Superior Maintenance
- Electronic Systems Monitor Product Health And Performance
- Complete Dealer Support **pg. 14**



# RELIABILITY

## *The Cat 972H – Tested And Proven – Ready To Work*

- Proven components and technology provide proven reliability
- Electronic systems monitor vital machine components
- Excellent uptime from the best dealer support network in the industry
- Unmatched genuine Cat parts availability

**PROVEN RELIABILITY.** The 972H features many of the components designed and proven in previous 972 models – all contribute to the reliability of the 972H:

- Frames
- Axles
- Planetary powershift transmission
- Free wheel stator torque converter
- Separated cooling system
- Cab



**ACERT™ TECHNOLOGY.** Since March 2003, ACERT Technology has been proving itself in on-highway trucks. More recently it has proven itself again in field tests of off-highway equipment.

This technology allows Cat engines to meet durability and reliability expectations without sacrificing fuel economy or performance.



### **CATERPILLAR DESIGNED COMPONENTS.**

Components used to build Cat Wheel Loaders are designed and manufactured to Caterpillar quality standards to ensure maximum performance even in extreme operating conditions.

Engine electronic control modules and sensors are completely sealed against moisture and dust. Deutsche connectors and electrical wire braiding ensure that electrical connections resist corrosion and premature wear.

Hoses are engineered and manufactured for high resistance to abrasion, excellent flexibility and easy installation and replacement.

Caterpillar® couplings use o-ring face seals to provide positive sealing for durable leak-free connections.

Heavy duty components reduce the risk of leaks, corrosion and premature wear increasing uptime and helping to protect the environment.

**MONITORING PROGRAMS.** Monitoring product health is key to maintaining reliability of any equipment. Many programs are available on the 972H – both as standard and optional features – to help you track machine condition.

**Caterpillar Monitoring System.** The 972H is equipped with the Cat Monitoring System (CMS) that keeps watch over the health of your loader. CMS monitors critical engine system functions and will derate the engine to protect itself from damage if needed. Depending on which of the following six critical conditions arise, the CMS monitor or front panel will display warning lights and sound audible alarms.

- High coolant temperature
- High air inlet temperature
- Low engine oil pressure
- High fuel pressure
- Low fuel pressure
- Engine over-speed

**Product Link.** Product Link is a state-of-the-art satellite technology based product that provides two-way information flow between machine on-board systems and the Caterpillar network operations center. Multiple types of information can be collected and tracked – from machine location and service meter hours, to health and productivity information.

**EquipmentManager.** With a subscription to EquipmentManager through the Cat Dealer Storefront the information collected through Product Link can be transmitted to a computer. With fast, easy-to-access machine information, you can optimize asset utilization, reduce security risks, improve maintenance management and implement before-failure repair strategies. The result is more uptime, lower operating costs and a higher overall return on equipment investment.

**S•O•S<sup>SM</sup> Services.** Keep minor repairs from becoming major ones and avoid complete failures. By regularly taking samples from the ports provided, your Cat dealer tracks wear of components and parts, oil performance, and oil condition and uses that data to predict wear-related problems before they happen. Often a simple adjustment or replacement of a part, based on S•O•S reports, can keep a small problem from turning into a major repair – allowing your machine to be running when you need it, not waiting in the shop for service.



**DEALER SUPPORT.** The Caterpillar global network of independently-owned dealers is the best in the world at providing support to keep your loader up and running. Known for parts availability and technical expertise, Cat dealers are partners in your business.



**Service Capabilities.** Cat field service technicians have the experience and tools necessary to service your loader on site. Field service trucks are fully loaded with state-of-the-art tools and diagnostic equipment as well as specifications and schematics for every Cat machine. Technical experts at the dealership and at Caterpillar are available to provide assistance to field service technicians when needed.

When on-site repair isn't enough, Cat dealerships are fully-equipped to service your loader quickly.

**PARTS AVAILABILITY.** Caterpillar provides an unsurpassed level of personalized service for your wheel loader. With parts distribution centers throughout the world, most parts can be delivered in 24 hours.

**REMANUFACTURED PARTS.** Cat engines and major components are designed to be remanufactured and provide multiple life cycles. The Cat Reman program is more extensive than most rebuild programs. Components are actually remanufactured in the factory to original specifications with necessary product updates.

Strict reuse guidelines and unparalleled quality control ensure that reman products provide the reliability and durability that you expect from Caterpillar. Reman products are stocked in distribution centers around the world and are ready to install to minimize downtime, maintain productivity and profitability.



# DURABILITY

## *Built Strong And Tough*

- ACERT™ Technology maintains engine performance, efficiency and durability while reducing emissions
- Heavy duty components withstand all operating conditions
- Strong, solid structures built to last



**EPA TIER III, EU STAGE III COMPLIANT C13 ENGINE.** ACERT Technology combines proven systems with innovative new technologies to precisely deliver fuel to the combustion chamber. It maintains engine performance, efficiency and durability while dramatically reducing emissions.

The Cat C13 with ACERT technology is a 12.5 L displacement, 6-cylinder, electronically governed engine. Electronic fuel injection is provided through the well-proven Caterpillar mechanically actuated, electronically controlled unit injection (MEUI) system. A wastegate turbocharger, equipped with a titanium wheel for improved durability, combined with air-to-air aftercooling (ATAAC) provides consistent high horsepower with increased altitude capability.

**Electronic Controller.** The engine is governed by an electronic control module designated the A4:E4V2. The controller continually adjusts engine output based on load demand using a series of sensors located on the machine and engine.

**Mechanically Actuated Electronic Unit Injectors (MEUI).** The MEUI system has been at work in Cat engines across the product line with a proven track record of consistent, durable, reliable performance.

**Engine Block and Pistons.** The gray, cast iron engine block is made of the same material as the cylinder heads. Wall diameters are thicker than in previous designs while adjustments have been made to reduce sound levels and increase rigidity. One-piece all-steel pistons are housed within a wet, replaceable cast iron cylinder liner constructed of high-strength, heat-treated castings. Steel-forged connecting rods are larger in diameter and are connected to the crankshaft with two bolts.

**RADIATOR.** Brazed aluminum construction provides a stronger joint for maximum durability and resistance to leaks. The 6-fins-per-inch, square-wave core design decreases the chance of blockage and plugging.



### **POWERSHIFT TRANSMISSION.**

The 972H continues to use heavy-duty powershift transmission technology proven on previous models and currently used up through the largest wheel loader built by Caterpillar – the 994F.

The planetary powershift transmission features heavy-duty components to handle the toughest applications. Built-in electronic controls enhance productivity and durability.

**Control Throttle Shifting.** Control Throttle Shifting regulates engine speed during high-energy directional changes for smoother shifting and longer component life.

**Electronic Clutch Pressure Control.** Electronic Clutch Pressure Control (ECPC) system modulates clutches individually to improve shift quality, component life and operator comfort. Adjustment is simplified with all solenoid valves externally mounted on top of the transmission housing.

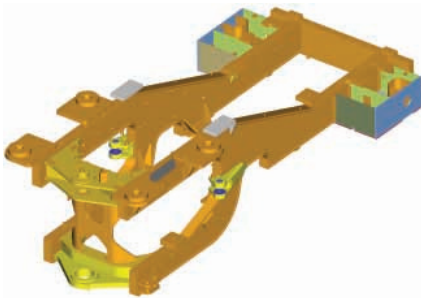
**AXLES.** The 972H axles are designed by Caterpillar for durability in all operating conditions. The front axle is rigidly mounted to the frame to support the weight of the wheel loader and withstand internal torque loads as well as external forces encountered throughout operation.

The rear axle is designed to allow  $\pm 13^\circ$  oscillation. All four wheels remain on the ground over uneven terrain providing excellent stability and traction.

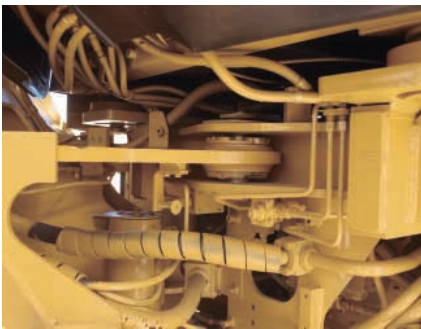


**Integrated Braking System.** The Cat exclusive Integrated Braking System reduces axle oil temperatures and improves transmission neutralizer smoothness. IBS has a direct impact on durability of the axles and brakes especially in applications involving long distances and/or heavy braking.

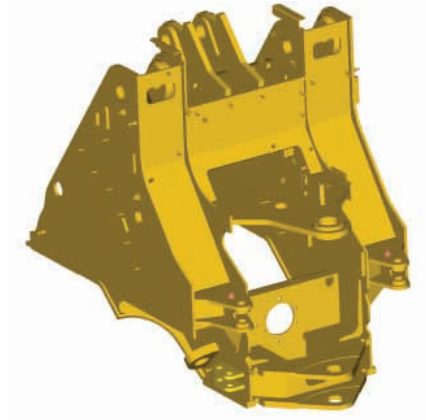
**STRUCTURES.** The articulated frame design of the 972H features a durable box-section engine frame and rigid four-plate loader tower that is robotically welded. Robotic welding creates frame joints with deep plate penetration welds and excellent fusion for maximum strength and durability.



**Engine End Frame (EEF).** A full box-section engine end frame with hitch plates at the front end provides a strong, rigid structure that resists twisting and impact loads. The result is an extremely solid mounting platform for the engine, transmission, axle, ROPS and other accessories.



**Spread Hitch.** The distance between the upper and lower hitch plates is an important contributor to machine performance and component life. The Caterpillar spread hitch design provides excellent load distribution and bearing life. Both the upper and lower hitch pins pivot on double tapered roller bearings – improving durability by distributing both vertical and horizontal loads over a larger surface area. The wide opening also provides excellent service access.

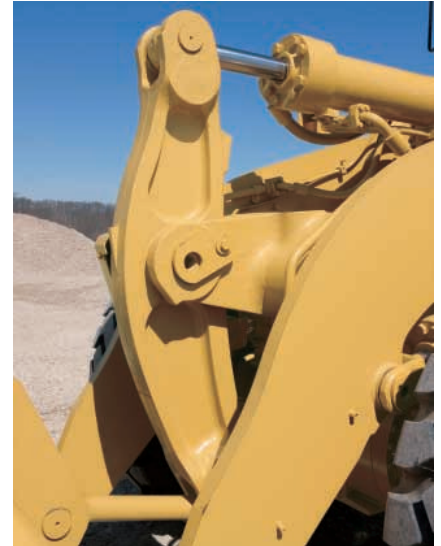


**Non-Engine End Frame (NEEF).**

The non-engine end frame provides a solid mounting base for the front axle, lift arms, lift cylinders and tilt cylinders. The fabricated, four-plate loader tower absorbs the forces associated with loading, twisting and penetration.



**Counterweight.** The one-piece counterweight is integrated into the 972H design and styling. This 5,849 lb (2653 kg) counterweight incorporates the rear lights into the top of the structure.



**Linkage.** The 972H linkage is a single-tilt Z-bar design. Z-bar linkage generates excellent breakout force and good rack back angle for better bucket loading and load retention.

Lift arms are solid steel, providing superior strength with an excellent front end viewing area. The proven design offers excellent dump clearance and reach for exceptional matching to both on- and off-highway trucks.

Rotary sensors, for the tilt lever and lift circuit allow the operator to electronically set detent positions from the cab. A guard covers the sensor to protect it from damage.

# PRODUCTIVITY

## Work Smart And Move More

- Hydraulics are easy to control with low effort
- Maximum fuel efficiency and flexibility in idle speeds
- Consistent horsepower regardless of conditions
- Standard and optional features that maximize productivity

**LOAD SENSING HYDRAULICS.** The 972H features a load sensing hydraulic system that automatically adjusts to operating conditions to provide only the hydraulic flow required by the implement for improved fuel efficiency.

With the new M3PC Priority Proportional Pressure Compensation Valve, implement control is improved over the previous system – raise/lower and rack back/dump can be operated simultaneously and fine modulation is repeatable for improved productivity.

Operators will notice enhanced ease of operation, more rimpull into the pile and a 20% increase in lift force.



**Electrohydraulic Implement Controls.** Electrohydraulic implement controls on the 972H provide the operator with in-cab programmable kickouts to prevent material spillage – improving productivity. The implement control console features an optional Forward/Neutral/Reverse switch allowing fast, easy directional changes to reduce cycle times.

**CONSTANT NET HORSEPOWER.** On many competitive machines, gross horsepower is constant, meaning that net engine power available for actual work will vary based on demands made from parasitic sources, such as air conditioning or cooling fans.

The Cat C13 engine is electronically configured to provide constant net horsepower at full parasitic load enhancing productivity and improving fuel efficiency.

**On-Demand Fan.** With electronic control of the variable speed on-demand fan, temperature levels of the engine coolant, transmission oil, hydraulic oil and air inlet manifold are constantly monitored. This data is used to control and maintain fan speed at the level necessary to maintain normal system temperatures. Controlled fan speed improves fuel efficiency, lowers noise levels and reduces radiator plugging.

**Separated Cooling System.** Many competitive loaders use cooling systems that pull air in from the sides, through the engine compartment and exhaust it out the rear of the machine. The 972H cooling system is isolated from the engine compartment by a non-metallic shield. The hydraulically driven, variable speed fan draws in clean air from the rear of the machine and exhausts it out the sides and top of the hood. The end results are optimal cooling efficiency, increased fuel efficiency, less radiator plugging and reduced operator sound levels.

**PLANETARY POWERSHIFT TRANSMISSION.** The electronic planetary powershift transmission with automatic shift capability is designed and built by Caterpillar. The very responsive, full-power speed and directional changes provide excellent cycle times and productivity.



**VARIABLE SHIFT CONTROL.** Match transmission shifting patterns to machine application requirements. Variable Shift Control (VSC) improves shift quality and fuel efficiency in certain applications by allowing the transmission to upshift at lower engine RPMs.



**RIDE CONTROL.** The optional Ride Control System improves ride, performance and load retention when traveling over rough terrain. Operators gain confidence moving at higher speeds in load and carry operations decreasing cycle times and increasing productivity.

**PAYLOAD CONTROL SYSTEM.** Scales, designed specifically for Cat machines allow on-the-go weighing of material in the bucket. Operators load trucks more accurately and efficiently. Loading trucks right the first time equates to quicker cycles for the operator and more productivity for your operation.



Payload Control is offered as a factory-installed option. Driver tickets and a variety of reports can be printed with the addition of the optional printer.

**AUTOLUBE.** The optional Caterpillar Autolube System provides precise, automatic lubrication of pins and bushings – during loader operation. Automatic lubrication reduces time spent on daily maintenance and downtime for unplanned repairs due to inadequate greasing – improving productivity.

**AGGREGATE AUTODIG.** Well-received by both experienced and novice operators, the optional Aggregate Autodig automates the loading process.

Aggregate Autodig provides smoother loading cycles, consistently full payloads and eliminates tire spin – all without touching the controls.



## VERSATILITY

### *Built For Your Operation*

- Special machine arrangements provided from the factory
- A variety of buckets and work tools for many applications



#### **SPECIAL MACHINE ARRANGEMENTS.**

When you have a specialized operation, you need a specialized wheel loader to be productive. The following machine arrangements are available for the 972H:

**Aggregate Yard Loaders.** The Yard Loader Value Package provides the ultimate in productivity and convenience. Options such as Autolube, Aggregate Autodig, Payload Control and Ride Control reduce operator fatigue and make your wheel loader the most productive yard loader available.

**Industrial Loader.** Heavy duty guarding and special features designed specifically for industrial applications, such as waste and scrap handling, allow the 972H to withstand the harshest of conditions. Work tools designed specifically for these applications can be added to the machine.

**Lift Arrangements.** High lift arrangements are available for applications requiring additional dump clearance. Both 2-valve and 3-valve packages can be factory installed for conventional and Command Control machines.

#### **WORK TOOLS AND QUICK COUPLERS.**

A variety of buckets, work tools and couplers are available from the factory or from your Caterpillar dealer to customize the 972H for your operation.

**Quick Couplers.** Quick couplers provide unmatched versatility for wheel loaders. Buckets and work tools can be changed in seconds without leaving the cab for maximum productivity.



#### **General Purpose Buckets.**

General purpose buckets provide good all-around performance for stockpiling, rehandling, excavating and bank loading. A heavy duty general purpose bucket can be used for more aggressive applications.



**Rock Buckets.** Rock buckets are designed for face or bank loading in mining or quarry applications. The straight-edge rock bucket provides higher breakout force and increased dump clearance. The spade-edge rock bucket offers increased penetration in certain applications.

**Material Handling Buckets.** The material handling bucket is a flat-floor bucket used for handling stockpiled materials such as aggregates or other easy-to-load materials requiring moderate breakout force.



**Waste Buckets.** Waste buckets are designed for long life in the harsh world of refuse applications. This high-capacity bucket is well-suited for loading, sorting and other transfer station work.

**Heavy Duty Quarry Buckets.** The heavy duty quarry bucket is available for high-impact or high-abrasion quarry applications.

**Coal Buckets.** Coal buckets maximize productivity in loading and stockpiling coal and other materials of similar density.

**Woodchip and Clean-Up Buckets.** Woodchip and clean-up buckets are available for forestry and millyard applications.

**Multi-Purpose Buckets.** Multi-Purpose Buckets have a unique four-way action that can load, strip topsoil, bulldoze, clamp pipe or large chunks of concrete, clean up debris, and many other tasks.

**Side Dump Buckets.** Side Dump Buckets dump both to the front and to the side of the machine, an advantage when working in tight quarters, such as street work, tunnel construction and building levees.



**Forks.** Logging, millyard and pallet forks are available for forestry and material handling applications.

**Loader Rakes.** Loader Rakes are durable, high-capacity tools for land clearing and site clean up. Rakes are available with or without top clamps and in quick coupler and pin-on models.

**Material Handling Arms.** Material Handling Arms move pipe, concrete blocks, highway dividers and other construction materials quickly and precisely.



**Ground Engaging Tools (GET).**

Several GET options are available from Caterpillar for the 972H buckets. A cast corner adapter is incorporated into the design of the buckets that allows a tooth to be placed on the extreme corner for protection against base bucket wear.

Reversible bolt-on cutting edges (BOCE) and a bolt-on half-arrow cutting edge are also available for the 972H buckets.

The Cat K-Series™ tooth system features an easier-to-install tip and provides very secure tooth retention. No special tools are required for installation and removal.



## OPERATOR COMFORT

### *Work Comfortably And Efficiently*

- Comfortable operation
- Excellent visibility
- Easy entry and exit
- Controlled vibration
- Choice of steering systems

**OPERATING ENVIRONMENT.** The 972H maintains the distinction of offering the largest, most ergonomic cab in its class.



**Seat.** The Cat C-500 Series Comfort air suspension seat, standard in the 972H, is built strong and durable and is 6-way adjustable to accommodate all-sized operators. The cast one-piece back and seat pan prevent protrusions under the cushions. The seat features an automotive-style lumbar support for maximum comfort. The right hand armrest with integrated implement controls adjusts for comfortable, convenient operation. A heated seat option is available for additional comfort.

**VISIBILITY.** The 972H offers excellent visibility to both the front and rear of the machine. Distortion-free flat glass stretches to the floor of the cab for excellent visibility to the bucket. Wet-arm wipers on both front and back keep the windows clean in any condition. The cab roof has channels that direct rain off the corners of the cab keeping windows clear. An overhang on all sides protects the operator from glare.

#### **Windshield Cleaning Package.**

An optional windshield cleaning package provides additional steps and handrails to provide easy access for cleaning the front windows.

**Rear Vision Camera.** An optional rear vision camera is available to clearly monitor movement behind the wheel loader.



**Lighting Packages.** Optional lighting packages are available for roading or low-light applications. The optional High Intensity Discharge (HID) lights provide exceptional lighting for night work. A rotating beacon is available as a safety feature.

**VIBRATION.** Caterpillar understands that wheel loaders work in some of the harshest environments. By controlling normal machine vibrations, operator efficiency and productivity are improved. From the ground up, the Cat 972H is designed with many features, both standard and optional, that reduce vibration.

- The oscillating rear axle follows the contour of the ground while allowing the cab to stay steady.
- The cab is attached to the frame with iso-mounts designed to reduce shock loads from the ground.
- The articulation joint is equipped with two neutralizer valves that prevent frame-to-frame contact.

- Cylinder dampening slows the bucket as it reaches the limits of travel, preventing machine jarring.
- Ride Control is an option designed to reduce jolting and bouncing during load and carry operations. An accumulator acts as a shock absorber to reduce machine pitching and provide a smoother ride over rough terrain.
- Electronically controlled, automatic kickouts prevent the jerking and bouncing associated with abrupt cylinder stops.
- Air suspension seat-mounted implement controls reduce vertical vibrations that come up through the floor.



**ENTRY AND EXIT.** A ladder with self-cleaning steps keeps debris build-up to a minimum. The ladder is at a 5° forward incline for easy entry and exit.

Platforms are wide allowing ease of movement to the front or rear of the machine. The main cab door opens a full 180° and latches in place to allow safe navigation to the rear of the machine.

The right side door opens 10°, or completely for secondary exit simply by pulling a pin. A full-length ladder on the right side facilitates safe exit if needed.

**STEERING OPTIONS.** The 972H offers a choice of steering systems to provide flexibility for your application.

**Conventional Steering.** The conventional steering configuration offers a low-effort hand metering unit hydraulic steering system. Load sensing steering directs power through the steering system only when needed. When not steering, more engine power is available to generate rimpull, breakout force, lift force, and results in reduced fuel consumption. The steering column tilts for maximum operator comfort.



**Command Control Steering.** Command Control Steering is a load-sensing system that links the steering wheel and frame angle positions to provide the proper amount of steering control. The speed the machine turns is proportional to the steering wheel position. Less than 6 lb (26 N) steering effort is required by the operator, regardless of conditions. Full machine articulation is accomplished with a  $\pm 70^\circ$  turn of the wheel – versus two to three 360° turns of a conventional steering wheel.



The Command Control Steering wheel contains the forward/neutral/reverse switch and the upshift/downshift button – allowing the left hand to remain on the steering wheel at all times. Implement controls are integrated into the right armrest so they move with the operator.

**CONTROLS.** The main control panel on the 972H is located high on the right ROPS post – keeping everything within reach of the operator while maintaining visibility to the ground. Keeping all switches and controls conveniently placed allows better efficiency and improved productivity all while minimizing operator fatigue.

**AGGREGATE AUTODIG.** The optional Aggregate Autodig System provides smoother loading cycles and consistently full payloads without touching the controls – reducing operator fatigue.



# OWNING AND OPERATING COSTS

## *The 972H – Best Value For Your Operation*

- More return for your wheel loader investment through proven Cat fuel efficiency
- Sight gauges, grouped maintenance points, easy engine access, ecology drains, maintenance-free batteries – all simplify daily maintenance
- Electronic monitoring systems track product health to avoid unscheduled costly repairs
- Unsurpassed parts availability reduces downtime
- Excellent resale value provided by genuine Cat quality, outstanding dealer service and unmatched dealer support programs
- Caterpillar Financial Services and Cat dealers understand your business



**FUEL EFFICIENCY.** Many manufacturers tout fuel consumption as one of the determining factors for machine acquisition, but fuel consumption is only part of the story. Productivity must also play a part in the decision. Even more importantly, how fuel consumption and productivity interact – fuel efficiency – should be considered.

**972H Fuel Efficiency.** Customer testing of the 972H is showing an improvement in fuel efficiency over the 972G Series II. This fuel savings is achieved through the use of the Caterpillar proportional-flow load sensing hydraulic system, Engine Idle Management System software, Variable Shift Control and ACERT Technology.

### **ACERT Technology Fuel Economy.**

Based on Caterpillar testing, the fuel economy of Cat engines with ACERT Technology is 3 to 5 percent better than current competing technologies. This fuel economy is directly related to the complete combustion of fuel due to the integration between the electronic control that monitors conditions, the air management system that controls air volume and the fuel injection system that delivers just the right amount of fuel as needed.

### **Free Wheel Stator Torque Converter (FWSTC).**

The free wheel stator torque converter improves power train efficiency in load and carry operations which contributes to the improved fuel efficiency of the 972H.



### **ENGINE IDLE MANAGEMENT SYSTEM.**

The Engine Idle Management System (EIMS) maximizes fuel efficiency and provides flexibility in managing idle speeds for specific application requirements. Four idle control speeds are available.

**Hibernate Mode.** Idle speed drops after a preset time to provide lower fuel consumption, reduced sound levels and lower emissions.

**Work Mode.** Adjust working idle speeds according to customer preference and operating conditions.

**Warm-Up Mode.** Keep the engine at a consistent temperature in cold conditions.

**Low Voltage Mode.** Prevent battery drain due to high electrical loads from attachments and accessories.



**MAINTENANCE.** Proper maintenance of your wheel loader can help control expenses and lower your owning and operating costs. The 972H provides unmatched serviceability by offering:

- Hydraulic service center
- Electric service center
- Well-protected, easily visible sight gauges
- Ground level maintenance points
- Easy access to engine compartment
- Ecology drains for simple and clean fluid drainage
- Brake wear indicators for ease of inspection
- Maintenance-free batteries
- Extended oil and filter change intervals
- Airborne debris-resistant, swing-out grill provides more efficient airflow



**MONITORING SYSTEMS.** Monitoring product health simplifies maintenance planning and reduces costs.



**Caterpillar Monitoring System.**

The Caterpillar Monitoring System (CMS) tracks critical machine systems to alert the operator to potential need for service. Three levels of warning allow the operator to assess the situation more accurately.

**Product Link.** With Product Link owners can collect and track multiple types of information – from machine location and service meter hours, to health and productivity information.

**EquipmentManager.** With a subscription to EquipmentManager information from Product Link can be transmitted to a computer. Return on equipment investment is optimized through maintenance management and improved uptime.

**Machine Security System.**

Stolen equipment equates to lost production and increased costs. Eliminate machine theft and unauthorized usage with the Cat Machine Security System (MSS). MSS is integrated into the machine's electronic system and can protect most brands of equipment by requiring a uniquely coded key to start the machine.

**S•O•S Services.** Managing component life and machine availability decreases downtime while improving your productivity and efficiency. S•O•S Services can help you do that. Regular fluid sampling is used to track what is going on inside the equipment. Wear-related problems are predictable and easily and quickly repairable. Maintenance can be done according to your schedule, resulting in increased uptime and flexibility in maintenance and repair before failure.



**PARTS AVAILABILITY.** Caterpillar provides an unsurpassed level of personalized service for your wheel loader. With parts distribution centers worldwide, most parts can be delivered in 24 hours. Easy access to parts reduces downtime.

**RESALE VALUE.** Owning quality equipment is a very important factor in maintaining resale value. Caterpillar not only supplies quality equipment but also provides product and dealer support to maintain the reliability and durability of your machine.

**Customer Support Agreements.**

A Customer Support Agreement (CSA) is any arrangement between you and your Cat dealer that helps you lower your total cost per unit of production. CSAs are flexible, allowing them to be tailored to your business. They can range from simple Preventive Maintenance Kits to sophisticated Total Cost Performance Guarantees. Having a CSA with your Cat dealer allows you more time to do what you do best – run your business.

**Caterpillar Equipment Training Solutions.**

A thorough understanding of machine systems and a high level of skill in operation helps achieve maximum efficiency and improves return on investment. Caterpillar Equipment Training Solutions programs help provide operators with high levels of proficiency and confidence. Contact your Cat Dealer for more information on Caterpillar Equipment Training Solutions programs.

**Caterpillar Financial Services**

**Corporation.** Cat Financial understands your business, your industry and the challenges you face. That's why they can provide payment plans to fit your unique needs – and to help you achieve your goals.

# SERVICEABILITY

## Easy To Maintain – Easy To Service

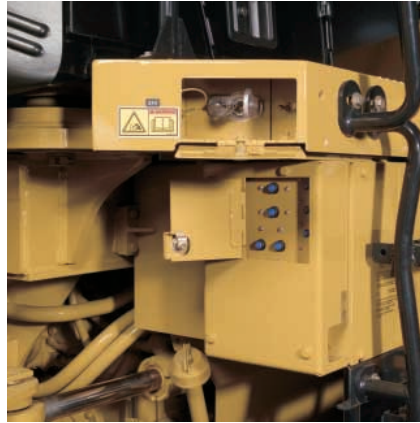
- Grouped service points and sight gauges for easy daily maintenance
- Convenient access to engine compartment for excellent serviceability
- Swing-out grill and cooling cores for easy cleaning
- Electronic systems to monitor product health



### HYDRAULIC SERVICE CENTER.

Transmission oil and hydraulic filters are located in the Hydraulic Service Center, behind the hinged, right-side access ladder. The hydraulic oil tank can be drained from this location using the access port.

- Hydraulic filter change interval at 500 hours
- Transmission filter change interval at 1,000 hours



**ELECTRIC SERVICE CENTER.** Batteries, relay panel and an optional tool box are conveniently located below the left-side access platform. The engine shutdown switch is housed with the relay panel. A compartment integrated into the access platform contains the hood tilt actuation switch, master switch and jump-start receptacle.



### GROUND LEVEL GREASE POINTS.

Grease fittings are grouped on the right side of the machine in two convenient locations – in a service compartment just below the right-side service platform, and a bank located just off the non-engine end frame. These locations facilitate easy lubrication of vital components located throughout the machine.

**AUTOLUBE.** Reduce time spent on daily maintenance and downtime for unplanned repairs due to inadequate greasing with the optional Caterpillar Automatic Lubrication System. Precise lubrication of pins and bushings at specific intervals improves component wear and reduces ground contamination from excessive greasing.



**REMOTE PRESSURE TAPS.** Pressure taps for the steering and hydraulic systems, transmission (optional) and brakes are grouped behind an access panel just below the right-side service platform.

**S•O•S SERVICES.** Sampling valves on the 972H allow quick access to engine, transmission and hydraulic oils for S•O•S analysis. Oil change intervals and other services can be optimized according to your work schedule, reducing downtime and managing expenses.

**SIGHT GAUGES.** Well-protected, yet easily visible sight gauges for the transmission, hydraulic oil and radiator coolant allow easy daily checks while reducing the risk of contaminants entering the systems.

**BRAKE WEAR INDICATORS.** Axles are equipped with standard brake wear indicators, allowing a technician to easily determine when it is necessary to service the brakes.



**ENGINE COMPARTMENT ACCESS.**

The non-metallic hood on the 972H has been redesigned and restyled from previous models. Side and top panels are stronger due to more robust reinforcement ribs – the change in contour also adds to rigidity of the hood.



A single mechanical lift cylinder with manual back-up opens the hood. The tilting hood provides excellent access to the engine compartment, and if necessary, the entire hood can be removed with the built-in lift points.



With the hood closed, quick checks of engine oil levels and the coolant sight gauge can be completed through the side service doors.

Panels located behind the tires lift up and can be removed for additional access. Roading fenders hinge from the rear and swing out allowing easier access to the engine compartment.



**COOLING SYSTEM.** Cooling system access for clean-out and maintenance is outstanding. The perforated and corrugated grill minimizes debris build-up and swings out for easy cleaning and access to the cooling cores.

The full-width air conditioning condenser and oil cooler cores swing out 45° to allow easy cleaning of the rear radiator face. Access panels on either side of the radiator support structure provide access to the front face of the radiator and ATAAC cores for easy cleaning.

**ELECTRIC PRIMING PUMP.** An electric fuel priming pump located on the primary fuel filter base eliminates the need to pre-fill or manually prime filters after a change, eliminating engine contamination.

**ECOLOGY DRAINS.** Engine, transmission and hydraulic oils can be easily drained with standard-equipment ecology drains. An axle oil ecology drain is optional.

**CAB.** The entire operator station can be removed in about 45 minutes and is easy to re-attach. Quick disconnects are used so no wires need to be cut and no refrigerant is lost.

Cab cleaning is made easy with channels on the cab floor and no threshold at the door – the floor can be swept or mopped out easily.

**WINDSHIELD CLEANING PACKAGE.** An optional windshield cleaning package consists of two steps for the loader front frame, two additional handrails and a folding mirror. This package allows access to the entire front windshield for easy cleaning.

**COMPLETE CUSTOMER SUPPORT.** Cat field service technicians have the experience and tools necessary to service your loader on site. Technical experts at the dealership and Caterpillar can provide additional assistance to field service technicians as needed.

When on-site repair isn't enough, Cat dealerships are fully equipped to service your loader quickly.



## Engine

Engine Model	Cat® C13 ACERT™	
Gross Power – SAE J1995	232 kW	311 hp
Net Power – ISO 9249	214 kW	287 hp
Net Power – SAE J1349	212 kW	284 hp
Net Power – 80/1269/EEC	214 kW	287 hp
Peak Torque (Net) @ 1,400 rpm	1332 N•m	983 ft-lb
Bore	130 mm	5.12 in
Stroke	157 mm	6.18 in
Displacement	12.5 L	762.8 in <sup>3</sup>

- Caterpillar engine with ACERT™ Technology – EPA Tier III, EU Stage III Compliant
- These ratings apply at 1,800 rpm when tested under the specified standard conditions.
- Rating for net power advertised based on power available when the engine is equipped with alternator, air cleaner, muffler and on-demand hydraulic fan drive at maximum fan speed.

## Weights

Operating Weight	25 148 kg	55,451 lb
------------------	-----------	-----------

- For 4.6 m<sup>3</sup> (6.0 yd<sup>3</sup>) general purpose bucket with BOCE

## Buckets

Bucket Capacities	3.8-4.6 m <sup>3</sup>	5.0-6.0 yd <sup>3</sup>
Max Bucket Capacity	4.6 m <sup>3</sup>	6 yd <sup>3</sup>

## Operating Specifications

Static Tipping Load, Full Turn	16 903 kg	37,271 lb
Breakout Force	230 kN	51,750 lb

- For 4.6 m<sup>3</sup> (6.0 yd<sup>3</sup>) general purpose bucket with BOCE

## Transmission

Forward 1	7.2 km/h	4.5 mph
Forward 2	12.6 km/h	7.8 mph
Forward 3	21.4 km/h	13.3 mph
Forward 4	36.9 km/h	22.9 mph
Reverse 1	8.2 km/h	5.1 mph
Reverse 2	14.2 km/h	8.8 mph
Reverse 3	24.3 km/h	15.1 mph
Reverse 4	38.8 km/h	24 mph

- Maximum travel speeds (26.5-25 tires).

## Hydraulic System

Bucket/Work Tool System – Pump Output	305 L/min	80.6 gal/min
Steering System Pump Type	Piston	
Hydraulic Cycle Time – Raise	5.9 Seconds	
Hydraulic Cycle Time – Dump	2.1 Seconds	
Hydraulic Cycle Time – Lower, Empty, Float Down	2.4 Seconds	
Hydraulic Cycle Time – Total	10.4 Seconds	

- Implement System (Standard), Piston Pump – Rated at 2,100 rpm and 1,000 psi (6900 kPa).
- Cycle time with rated payload

## Brakes

Brakes	Meets required standards.
--------	---------------------------

- Meet OSHA, SAE J1473 OCT90 and ISO 3450-1985 standards.

## Axles

Front	Fixed front	
Rear	Oscillating ± 13°	
Maximum Single-Wheel Rise and Fall	502 mm	19.8 in

## Tires

Tires	Choose from a variety of tires to match your application.
-------	---

- Choice of:  
26.5R25, L-2  
26.5R25, L-3 (XHA)  
26.5R25, L-5 (VSDL)  
26.5-25, L-3 (SRG, SHRL)  
750/65R25, L-3
- NOTE: In certain applications (such as load and carry) the loader's productive capabilities might exceed the tires' tonnes-km/h (ton-mph) capabilities. Caterpillar recommends that you consult a tire supplier to evaluate all conditions before selecting a tire model. The 26.5-25 size range and other special tires are available on request.

## Cab

ROPS/FOPS Meets SAE and ISO standards.

- Caterpillar cab with integrated Rollover Protective Structure (ROPS) are standard in North America and Europe.
- ROPS meets SAE J1040 APR88 and ISO 3471:1994 criteria.
- Falling Objects Protective Structure (FOPS) meets SAE J231 JAN81 and ISO 3449:1992 Level II criteria.
- The operator sound pressure level measured according to the procedures specified in ISO 6394:1998 is 75 dB(A) for the cab offered by Caterpillar, when properly installed and maintained and tested with the doors and windows closed.
- Hearing protection may be needed when operating with an open operator station and cab (when not properly maintained or doors/windows open) for extended periods or in noisy environments.
- The sound pressure level is 111 dB(A) measured according to the static test procedure and conditions specified in ISO 6395:1998 for a standard machine configuration.

## Service Refill Capacities

Fuel Tank – Standard	380 L	100.4 gal
Cooling System	39 L	10.3 gal
Crankcase	35 L	9.25 gal
Transmission	35 L	9.25 gal
Differentials and Final Drives – Front	64 L	16.9 gal
Differentials and Final Drives – Rear	64 L	16.9 gal
Hydraulic Tank	110 L	29 gal

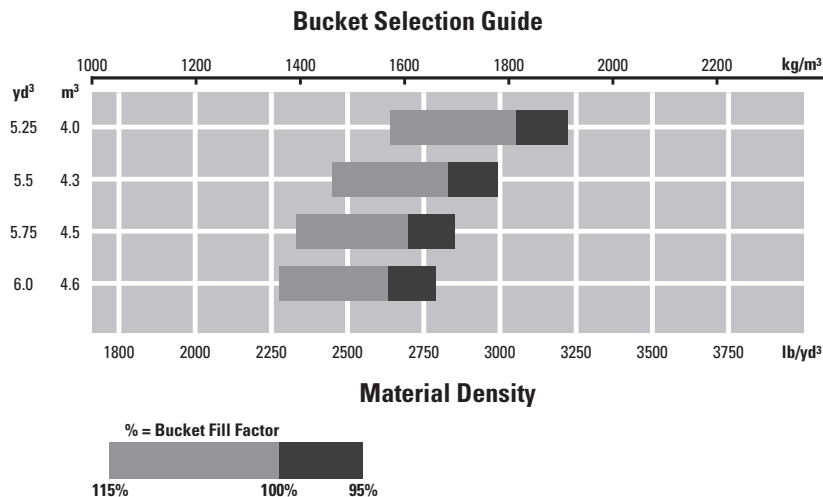
# Operating Specifications

Bucket		General Purpose Buckets					
		Teeth	Teeth and Segments	Bolt-On Edges	Teeth	Teeth and Segments	Bolt-On Edges
Rated Bucket Capacity (\$)	m <sup>3</sup>	3.80	4.00	4.00	4.00	4.30	4.30
	yd <sup>3</sup>	5.00	5.25	5.25	5.25	5.50	5.50
Struck Capacity (\$)	m <sup>3</sup>	3.28	3.43	3.43	3.43	3.62	3.62
	yd <sup>3</sup>	4.29	4.48	4.48	4.48	4.73	4.73
Width (\$)	mm	3145	3145	3059	3306	3306	3220
	ft/in	10'4"	10'4"	10'0"	10'10"	10'10"	10'7"
Dump Clearance at Full Lift and 45° Discharge (\$)	mm	3157	3157	3309	3157	3157	3309
	ft/in	10'4"	10'4"	10'10"	10'4"	10'4"	10'10"
Reach at Full Lift and 45° Discharge (\$)	mm	1386	1386	1246	1386	1386	1246
	ft/in	4'7"	4'7"	4'1"	4'7"	4'7"	4'1"
Reach with Lift Arm Horizontal and Bucket Level (\$)	mm	3037	3037	2832	3037	3037	2832
	ft/in	10'0"	10'0"	9'4"	10'0"	10'0"	9'4"
Digging Depth (\$)	mm	58	88	88	58	88	88
	in	2.28	3.46	3.46	2.28	3.46	3.46
Overall Length	mm	9289	9289	9065	9289	9289	9065
	ft/in	30'6"	30'6"	29'9"	30'6"	30'6"	29'9"
Overall Height with Bucket at Full Raise	mm	6075	6075	6075	6075	6075	6075
	ft/in	19'11"	19'11"	19'11"	19'11"	19'11"	19'11"
Loader Clearance Circle with Bucket in Carry Position (\$)	mm	14 937	14 937	14 725	15 082	15 082	14 872
	ft/in	49'0"	49'0"	48'4"	49'6"	49'6"	48'9"
Static Tipping Load Straight *	kg	19 169	18 805	18 989	19 191	18 796	19 009
	lb	42,268	41,465	41,871	42,316	41,445	41,915
Static Tipping Load Full 37° Turn	kg	16 969	16 625	16 808	16 981	16 604	16 817
	lb	37,417	36,658	37,062	37,443	36,612	37,081
Breakout Force ** (\$)	kN	258	241	242	258	240	242
	lb	58,050	54,225	54,450	58,050	54,000	54,450
Operating Weight * (\$)	kg	25 424	25 576	25 436	25 488	25 679	25 512
	lb	56,060	56,395	56,086	56,201	56,622	56,254

(\$) Specifications and ratings conform to all applicable standards recommended by the Society of Automotive Engineers, including SAE Standard J732C governing loader ratings.

\* Static tipping loads and operating weights shown are based on standard machine configuration with 26.5R25 L-4 Firestone tires, full fuel tank, coolants, lubricants, air conditioner, ride control, power train guard, metal roading fenders and operator.

\*\* Measured 102 mm (4.0") behind tip of cutting edge with bucket hinge pin as pivot point in accordance with SAE J732C.





Bucket		General Purpose Buckets					
		Teeth	Teeth and Segments	Bolt-On Edges	Teeth	Teeth and Segments	Bolt-On Edges
Rated Bucket Capacity (\$)	m <sup>3</sup>	4.30	4.50	4.50	4.40	4.60	4.60
	yd <sup>3</sup>	5.50	5.75	5.75	5.75	6.00	6.00
Struck Capacity (\$)	m <sup>3</sup>	3.67	3.82	3.82	3.85	4.00	4.00
	yd <sup>3</sup>	4.80	5.00	5.00	5.04	5.23	5.23
Width (\$)	mm	3306	3306	3220	3306	3306	3220
	ft/in	10'10"	10'10"	10'7"	10'10"	10'10"	10'7"
Dump Clearance at Full Lift and 45° Discharge (\$)	mm	3115	3115	3268	3100	3100	3252
	ft/in	10'3"	10'3"	10'9"	10'2"	10'2"	10'8"
Reach at Full Lift and 45° Discharge (\$)	mm	1413	1413	1274	1431	1431	1291
	ft/in	4'8"	4'8"	4'2"	4'8"	4'8"	4'3"
Reach with Lift Arm Horizontal and Bucket Level (\$)	mm	3087	3087	2882	3109	3109	2904
	ft/in	10'2"	10'2"	9'5"	10'2"	10'2"	9'6"
Digging Depth (\$)	mm	58	88	88	67	97	97
	in	2.28	3.46	3.46	2.64	3.82	3.82
Overall Length	mm	9339	9339	9115	9368	9368	9144
	ft/in	30'8"	30'8"	29'11"	30'9"	30'9"	30'0"
Overall Height with Bucket at Full Raise	mm	6122	6122	6122	6015	6015	6015
	ft/in	20'1"	20'1"	20'1"	19'9"	19'9"	19'9"
Loader Clearance Circle with Bucket in Carry Position (\$)	mm	15 110	15 110	14 899	15 130	15 130	14 919
	ft/in	49'7"	49'7"	48'11"	49'8"	49'8"	48'11"
Static Tipping Load Straight *	kg	18 965	18 569	18 781	19 258	18 854	19 067
	lb	41,818	40,945	41,412	42,464	41,573	42,043
Static Tipping Load Full 37° Turn	kg	16 774	16 396	16 608	17 076	16 691	16 903
	lb	36,987	36,153	36,621	37,653	36,804	37,271
Breakout Force ** (\$)	kN	247	231	232	244	229	230
	lb	55,575	51,975	52,200	54,900	51,525	51,750
Operating Weight * (\$)	kg	25 542	25 733	25 566	25 124	25 315	25 148
	lb	56,320	56,741	56,373	55,398	55,820	55,451

(\$) Specifications and ratings conform to all applicable standards recommended by the Society of Automotive Engineers, including SAE Standard J732C governing loader ratings.

\* Static tipping loads and operating weights shown are based on standard machine configuration with 26.5R25 L-4 Firestone tires, full fuel tank, coolants, lubricants, air conditioner, ride control, power train guard, metal roading fenders and operator.

\*\* Measured 102 mm (4.0") behind tip of cutting edge with bucket hinge pin as pivot point in accordance with SAE J732C.

## Operating Specifications

Bucket		Material Handling Buckets					
		Teeth	Teeth and Segments	Bolt-On Edges	Teeth	Teeth and Segments	Bolt-On Edges
Rated Bucket Capacity (§)	m <sup>3</sup>	4.00	4.30	4.30	4.50	4.70	4.70
	yd <sup>3</sup>	5.25	5.50	5.50	5.75	6.00	6.00
Struck Capacity (§)	m <sup>3</sup>	3.51	3.66	3.66	3.88	4.03	4.03
	yd <sup>3</sup>	4.59	4.78	4.78	5.07	5.27	5.27
Width (§)	mm	3306	3306	3220	3306	3306	3220
	ft/in	10'10"	10'10"	10'7"	10'10"	10'10"	10'7"
Dump Clearance at Full Lift and 45° Discharge (§)	mm	3065	3065	3228	3001	3001	3164
	ft/in	10'1"	10'1"	10'7"	9'10"	9'10"	10'5"
Reach at Full Lift and 45° Discharge (§)	mm	1284	1284	1157	1348	1348	1221
	ft/in	4'3"	4'3"	3'10"	4'5"	4'5"	4'0"
Reach with Lift Arm Horizontal and Bucket Level (§)	mm	3052	3052	2847	3142	3142	2937
	ft/in	10'0"	10'0"	9'4"	10'4"	10'4"	9'8"
Digging Depth (§)	mm	58	88	88	58	88	88
	in	2.28	3.46	3.46	2.28	3.46	3.46
Overall Length	mm	9304	9304	9080	9394	9394	9170
	ft/in	30'6"	30'6"	29'9"	30'10"	30'10"	30'1"
Overall Height with Bucket at Full Raise	mm	6071	6071	6071	6155	6155	6155
	ft/in	19'11"	19'11"	19'11"	20'2"	20'2"	20'2"
Loader Clearance Circle with Bucket in Carry Position (§)	mm	15 091	15 091	14 880	15 141	15 141	14 929
	ft/in	49'6"	49'6"	48'10"	49'8"	49'8"	49'0"
Static Tipping Load Straight *	kg	18 862	18 467	18 676	18 611	18 216	18 430
	lb	41,591	40,720	41,181	41,037	40,166	40,638
Static Tipping Load Full 37° Turn	kg	16 684	16 306	16 515	16 446	16 069	16 283
	lb	36,788	35,955	36,416	36,263	35,432	35,904
Breakout Force ** (§)	kN	254	237	239	236	221	223
	lb	57,150	53,325	53,775	53,100	49,725	50,175
Operating Weight * (§)	kg	25 535	25 726	25 559	25 646	25 837	25 670
	lb	56,305	56,726	56,358	56,549	56,971	56,602

(§) Specifications and ratings conform to all applicable standards recommended by the Society of Automotive Engineers, including SAE Standard J732C governing loader ratings.

\* Static tipping loads and operating weights shown are based on standard machine configuration with 26.5R25 L-4 Firestone tires, full fuel tank, coolants, lubricants, air conditioner, ride control, power train guard, metal roading fenders and operator.

\*\* Measured 102 mm (4.0") behind tip of cutting edge with bucket hinge pin as pivot point in accordance with SAE J732C.

		General Purpose Quick Coupler Buckets			Rock Bucket	Heavy-Duty Rock Bucket	Waste Bucket	High Lift Change in Specs
		Teeth	Teeth and Segments	Bolt-On Edges	Teeth and Segments	Teeth and Segments	Bolt-On Edges	
Rated Bucket Capacity (§)	m <sup>3</sup>	3.95	4.15	4.15	4.00	4.00	6.50	
	yd <sup>3</sup>	5.25	5.50	5.50	5.25	5.25	8.50	
Struck Capacity (§)	m <sup>3</sup>	3.43	3.60	3.60	3.45	3.45	5.60	
	yd <sup>3</sup>	4.49	4.71	4.71	4.52	4.52	7.28	
Width (§)	mm	3306	3306	3220	3270	3270	3355	
	ft/in	10'10"	10'10"	10'7"	10'9"	10'9"	11'0"	
Dump Clearance at Full Lift and 45° Discharge (§)	mm	3068	3068	3219	3075	3075	3212	335.75
	ft/in	10'1"	10'1"	10'7"	10'1"	10'1"	10'6"	1'1"
Reach at Full Lift and 45° Discharge (§)	mm	1474	1474	1335	1603	1603	1138	23.16
	ft/in	4'10"	4'10"	4'5"	5'3"	5'3"	3'9"	1"
Reach with Lift Arm Horizontal and Bucket Level (§)	mm	3163	3163	2958	3244	3244	2845	309
	ft/in	10'5"	10'5"	9'8"	10'8"	10'8"	9'4"	1'0"
Digging Depth (§)	mm	67	94	94	98	98	113	-4.54
	in	2.64	3.70	3.70	3.86	3.86	4.45	-0.1"
Overall Length	mm	9419	9419	9196	9488	9488	9096	334.79
	ft/in	30'11"	30'11"	30'2"	31'2"	31'2"	29'10"	1'1"
Overall Height with Bucket at Full Raise	mm	6035	6035	6035	6067	6394	6722	335.75
	ft/in	19'10"	19'10"	19'10"	19'11"	21'0"	22'1"	1'1"
Loader Clearance Circle with Bucket in Carry Position (§)	mm	15 158	15 158	14 946	15 159	15 159	15 022	330.32
	ft/in	49'9"	49'9"	49'0"	49'9"	49'9"	49'3"	1'1"
Static Tipping Load Straight *	kg	18 387	17 996	18 221	18 618	18 483	19 458	-1802
	lb	40,543	39,681	40,177	41,053	40,755	42,905	-3,973
Static Tipping Load Full 37° Turn	kg	16 256	15 883	16 107	16 415	16 281	17 153	-1643
	lb	35,844	35,022	35,516	36,195	35,900	37,822	-3,623
Breakout Force ** (§)	kN	229	214	216	214	213	236	-7
	lb	51,525	48,150	48,600	48,150	47,925	53,100	-1,654
Operating Weight * (§)	kg	25 412	25 603	25 436	25 901	26 075	26 051	74
	lb	56,033	56,455	56,086	57,112	57,495	57,442	163

(§) Specifications and ratings conform to all applicable standards recommended by the Society of Automotive Engineers, including SAE Standard J732C governing loader ratings.

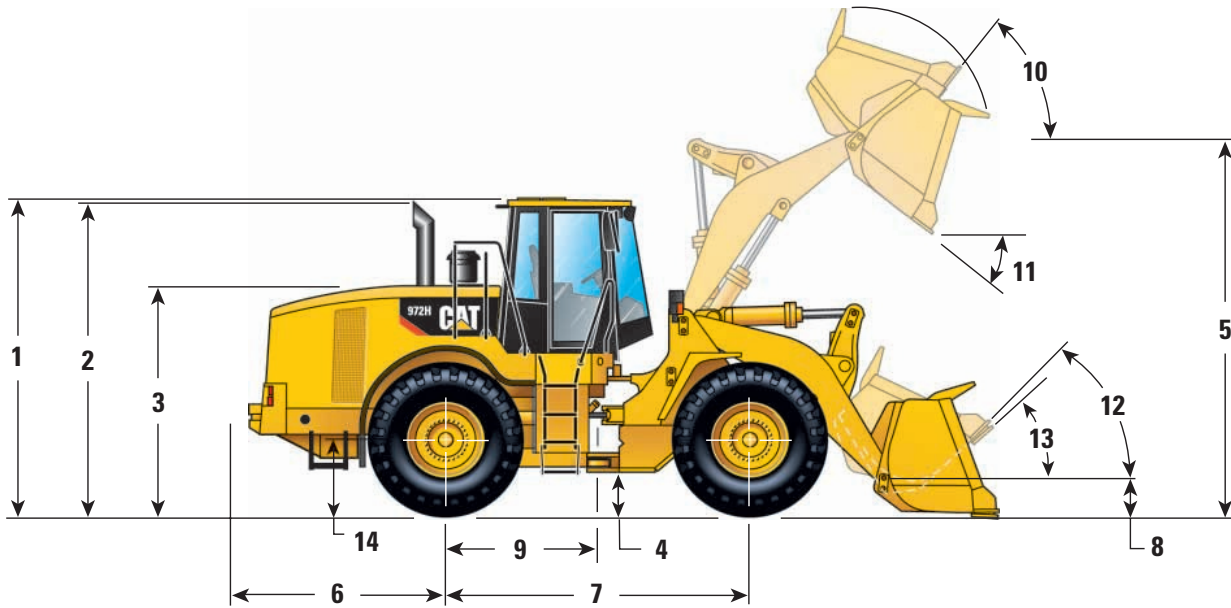
\* Static tipping loads and operating weights shown are based on standard machine configuration with 26.5R25 L-4 Firestone tires, full fuel tank, coolants, lubricants, air conditioner, ride control, power train guard, metal roading fenders and operator.

\*\* Measured 102 mm (4.0") behind tip of cutting edge with bucket hinge pin as pivot point in accordance with SAE J732C.



## Dimensions

All dimensions are approximate.



1	Height to top of ROPS	3606 mm (11'10")
2	Height to top of exhaust pipe	3557 mm (11'8")
3	Height to top of hood	2683 mm (8'10")
4	Ground clearance with 26.5R25 L-4 Firestone (see Tire Options chart for other tires)	496 mm (1'8")
5	B-Pin height	4466 mm (14'8")
6	Center line of rear axle to edge of counterweight	2461 mm (8'1")
7	Wheelbase	3450 mm (11'4")
8	B-Pin height @ carry	507 mm (1'8")
9	Center line of rear axle to hitch	1725 mm (5'8")
10	Rack back @ maximum lift	55°
11	Dump angle @ maximum lift	51.6°
12	Rack back @ carry	46.5°
13	Rack back @ ground	41.1°
14	Height to center line of axle	815 mm (2'8")

## Tire Dimensions/Specifications

	Width over tires		Change in vertical dimensions		Change in operating weight		Change in static tipping load	
	mm	inches	mm	inches	kg	lb	kg	lb
26.5R25 GP2B GY L2 Radial	3012	119	-20	-0.8	-82	-181	-57	-126
26.5R25 VMT BS L3 Radial	3015	119	-30	-1.2	48	106	-41	-90
26.5R25 RT3B GY L3 Radial	3017	119	-20	-0.8	-24	-53	-16	-35
26.5R25 XHA MX L3 Radial	3017	119	-20	-0.8	-34	-75	-24	-53
26.5R25 VSDL BS L5 Radial	2956	116	0	0.0	1214	2,677	847	1,868
750/65R25 MX L3 Radial Low Profile	3076	121	-20	-0.8	-262	-578	-64	-141
26.5-25 20 PR SRG FS L3 Bias	2992	118	-44	-1.7	-358	-789	-478	-1,054
26.5-25 20 PR SHRL GY L3 Bias	2974	117	-20	-0.8	7	15	-131	-289
26.5-25 SRG DT FS LDL4 Bias	3002	118	0	0.0	0	0	0	0

**NOTE:** Tread width for 26.5-25 is 2230 mm (7'4")

## Standard Equipment

Standard equipment may vary. Consult your Caterpillar dealer for details.

### ELECTRICAL

- Alarm, back-up
- Alternator, 80-amp brushless
- Batteries, Maintenance free (2) 1400 CCA
- Ignition key; start/stop switch
- Lighting system, halogen (6 total)
- Main disconnect switch
- Receptacle, starting, 24-volt
- Starter, electric, heavy-duty
- Starting and charging system (24-volt)

### OPERATOR ENVIRONMENT

- Air conditioner, heater and defroster
- Bucket/work tool function lockout
- Cab, pressurized and sound-suppressed ROPS/FOPS
  - Radio-ready (entertainment) includes antenna, speakers and converter (12-volt, 10-amp)
- Cigar lighter and ashtray (12-volt)
- Coat hook (2) with straps
- Computerized monitoring system
  - Instrumentation, gauges:
    - Digital gear range indicator
    - Engine coolant temperature
    - Fuel level
    - Hydraulic oil temperature
    - Speedometer/tachometer
    - Transmission oil temperature
  - Instrumentation, warning indicators:
    - Axle oil temperature
    - Electrical, alternator output
    - Engine inlet manifold temperature
    - Engine oil pressure
    - Fuel level
    - Fuel pressure, hi/low
    - Hydraulic filter bypass
    - Hydraulic oil level
    - Parking brake
    - Primary steering oil pressure
    - Service brake oil pressure
    - Transmission filter bypass
- Controls, electrohydraulic, lift and tilt function
- Horn, electric (steering wheel/console)
- Light, dome (cab)
- Lunchbox, beverage holders and personal tray
- Mirror, rearview (internally mounted)
- Seat, Cat Comfort (cloth) with air suspension
- Seat belt, retractable, 51 mm (2") wide
- Steering column, adjustable
  - angle (steering wheel and Command Control)
  - length (Command Control only)
- Wet-Arm wipers and washers, front and rear
  - Intermittent front wipers
- Window, sliding (left and right side)

### POWER TRAIN

- Brakes, full hydraulic enclosed wet-disc with Integrated Braking System (IBS) and brake wear indicator
- Engine, Cat C13 with ACERT™ technology and ATAAC Fan, radiator, electronically controlled, hydraulically driven, temperature sensing, on demand
- Filters, fuel, primary/secondary
- Filters, engine air, primary/secondary
- Fuel priming pump (electric)
- Muffler, sound suppressed
- Radiator, unit core
- Starting aid, ether (ready)
- Switch, transmission neutralizer lockout
- Torque converter, free wheel stator
- Transmission, automatic, planetary powershift (4F/4R)
- Variable Shift Control (VSC)

### OTHER

- Automatic bucket positioner
- Counterweight
- Couplings, Caterpillar O-ring face seal
- Doors, service access (locking)
- Ecology drains, engine, transmission and hydraulics
- Fenders, steel (front and rear)
- Guard, airborne debris
- Hitch, drawbar with pin
- Hood, non-metallic, power tilting
- Hoses, Caterpillar XT™
- Hydraulic oil cooler
- Kickout, lift and tilt, automatic (in-cab adjustable)
- Linkage, Z-bar, cast crosstube/tilt lever
- Oil sampling valves
- Product Link ready
- Remote diagnostic pressure taps
- Service center, electrical and hydraulic
- Sight gauges:
  - Engine coolant
  - Hydraulic oil
  - Transmission oil level
- Steering, load sensing
- Vandalism protection caplocks

### TIRES, RIMS, WHEELS

A tire must be selected from the mandatory attachments section. Base machine price includes an allowance based on a premium radial tire.

### ANTIFREEZE

Premixed 50% concentration of Extended Life Coolant with freeze protection to -34° C (-29° F)

## Optional Equipment

*Optional equipment may vary. Consult your Caterpillar dealer for details.*

Aggregate Autodig System  
Autolube  
Buckets and work tools  
Bucket Ground Engaging Tools (GET) – see Cat dealer for details  
Camera, rear vision  
Cooler, axle oil  
Cooling, high-ambient, 50° C (122° F)  
Differentials  
    Limited slip, front or rear  
    NO-SPIN, rear  
Drain, axle ecology  
Fender extensions, front and rear  
Fenders, narrow  
Fenders, roading  
Guard, axle seal  
Guard, front window, wide or small mesh  
Guard, power train  
Guard, vandalism  
Heater, engine coolant, 120- or 240-volt  
Hydraulic arrangement, three-valve  
Joystick control, two- or three-valve  
Lights, directional  
Lights, high intensity discharge (HID)  
Lights, roading  
Light, warning beacon  
Lights, work, cab-mounted  
Machine Security System  
Mirrors, external  
Mirrors, heated external  
Mirrors, heated external, folding  
Open canopy  
Payload Control System  
    Payload Control System Printer  
Platform, window cleaning  
Precleaner, turbine  
Precleaner, turbine/trash  
Product Link  
Radio, AM/FM Weatherband (CD)  
Radio, CB-ready  
Remote pressure taps (transmission, steering, torque converter and implement systems)  
Ride Control System, two- or three-valve  
Seat, heated  
Seatbelt, 76 mm (3") wide  
Sound suppression, exterior  
Steering, Command Control System  
Steering, secondary  
Switch, lift lever FNR (steering wheel machines)  
Sun visor, front  
Tool box  
Special Machine Arrangements  
    High Lift Arrangement, two- and three-valve  
    Industrial Loader Arrangement  
    Yard Loader Value Package



---

# Notes

# 972H Wheel Loader

For more complete information on Cat products, dealer services,  
and industry solutions, visit us on the web at [www.cat.com](http://www.cat.com)

© 2007 Caterpillar  
All Rights Reserved  
Printed in U.S.A.

Materials and specifications are subject to change without notice.  
Featured machines in photos may include additional equipment.  
See your Caterpillar dealer for available options.

CAT, CATERPILLAR, their respective logos, ACERT, "Caterpillar Yellow" and the  
POWER EDGE trade dress, as well as corporate and product identity used herein,  
are trademarks of Caterpillar and may not be used without permission.

AEHQ5658-01 (5-07)  
Replaces AEHQ5658

**CATERPILLAR**<sup>®</sup>