

850K CRAWLER DOZER

139.5–152 kW (187–205 hp)



JOHN DEERE





It's got your fingerprints all over it.

OK, maybe not **your** fingerprints. But equipment owners and operators like you had a hand in perfecting the re-imagined 850K. Armed with real-world experience, participants in our Customer Advocate Group (CAG) offered their expertise. We listened and responded with numerous K-Series enhancements including additional power and weight for increased productivity. An EPA Interim Tier 4/EU Stage IIIB diesel engine for work in non-attainment areas. Spacious redesigned cab that's noticeably quieter and more comfortable. And best-in-class serviceability features, such as an innovative easy-to-clean "V-Cool" package. Add to those the unsurpassed operating ease and maneuverability operators have come to expect from our crawlers, and the 850K is an obvious choice. To get your hands on one, see your John Deere dealer.

Rated Power

139.5 kW (187 hp) LT/PAT Dozer

152 kW (205 hp) WLT, LGP/PAT Dozer; Standard, WT, LGP/Outside Dozer

Base Weight

Outside Dozer Blade

19 295 kg (42,449 lb.) Standard

19 959 kg (43,910 lb.) WT

21 684 kg (47,705 lb.) LGP

PAT Blade

19 785 kg (43,527 lb.) LT

20 390 kg (44,858 lb.) WLT

20 945 kg (46,079 lb.) LGP





Go beyond the limits of other crawlers.

Packed full of production-boosting advantages, the 850K does more without a lot of extra effort. State-of-the-art electronic controls put an operator in complete command of an arsenal of production-boosting hydrostatic advantages, including power turns, counterrotation, and infinitely variable travel speeds. What's more, Total Machine Control allows customized decelerator mode and response, forward/reverse ground-speed, steering modulation, and forward/reverse speed ratios. Nothing else runs like this Deere.

Infinitely variable range to 10.9 km/h (6.8 mph) gives total flexibility to match ground speed to the load. Travel can also be varied to fit specific applications, terrain conditions, or operating preferences — or limited to maximize undercarriage life.

Equipped with optional Integrated Grade Control (IGC), adding your preferred grade-control system is as simple as plugging in the components, calibrating, and going to work.

Independent track control speeds up or slows down each side — for smooth, full-power turns. An automatic 10-percent power boost helps carry big blade loads through turns.

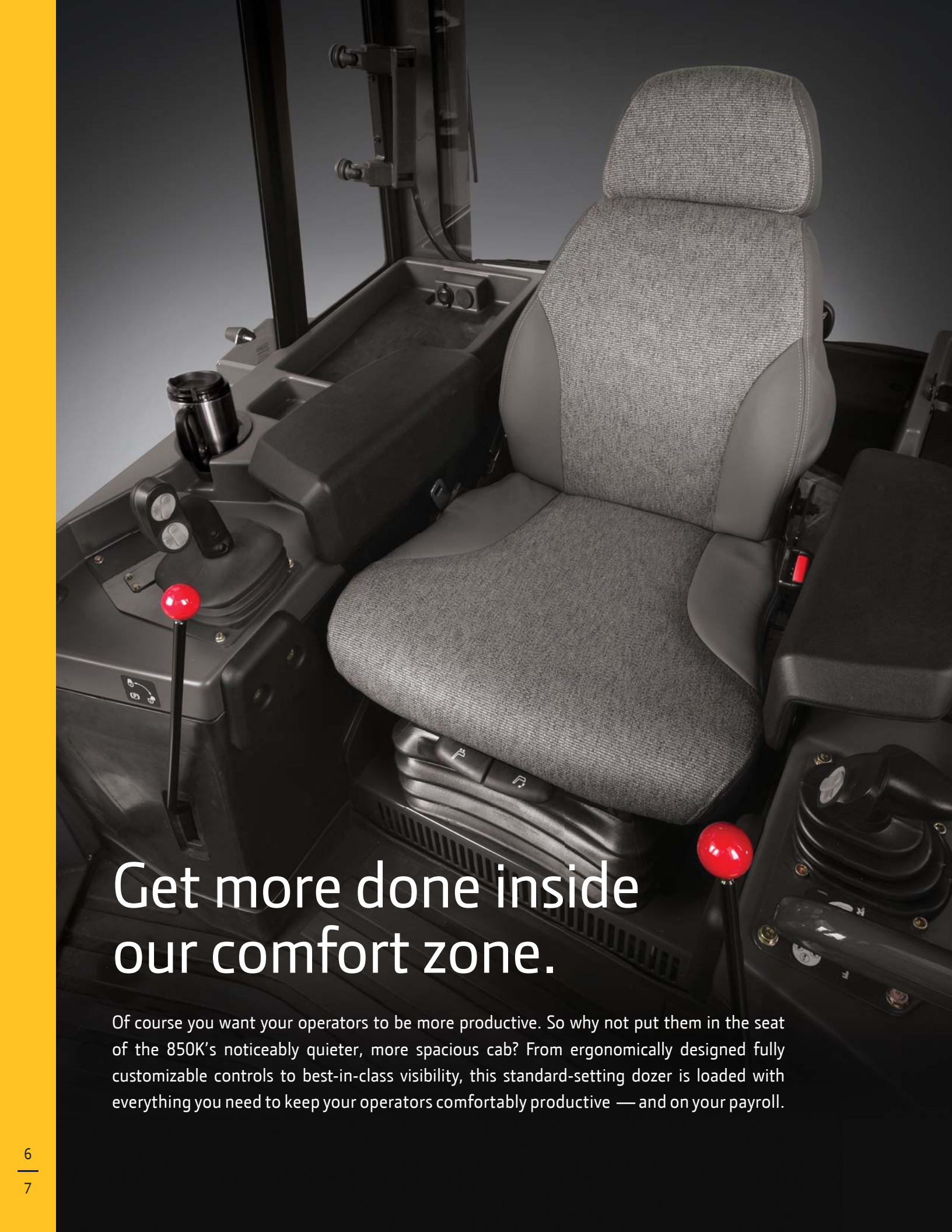
Low-effort controls command the blade and full-featured hydrostatic drivetrain, ensuring predictable response at all times in all conditions.

1. This crawler steers the same and maintains its preset speed whether working on level ground or a 2-to-1 slope. So there's never a need to cross-steer or ride a brake.

2. Counterrotation is another productivity-boosting feature. It enables an operator to overcome heavy corner loads and quickly reposition the blade on the go. Provides space-saving spot turns, too.

3. Simply set maximum desired ground speed and the power management system automatically maintains peak engine rpm and power efficiency without stalling or shifting.





Get more done inside our comfort zone.

Of course you want your operators to be more productive. So why not put them in the seat of the 850K's noticeably quieter, more spacious cab? From ergonomically designed fully customizable controls to best-in-class visibility, this standard-setting dozer is loaded with everything you need to keep your operators comfortably productive — and on your payroll.

1. Sealed-switch module gives fingertip control of keyless start, and enables exclusive features such as turbocharger cool-down and auto shutdown. Touchpad security system requires a numeric pass code (when enabled) to help prevent unauthorized machine operation.

2. Beyond cup and cooler holders, there are plenty of places to store stuff. If you're running a grade-control system, the lockable in-dash compartment is ideal for end-of-day storage (or permanent placement) of the monitor.

3. Overhead radio and storage console includes a 12-volt electrical outlet for powering a cell phone or an iPod®.



Oil-filled cab mounts and extensive insulation effectively isolate operators from vibration and noise. At just 76 dBA, the cab is noticeably quiet.

Standard high-back air-suspension seat and optional deluxe heated and leather-bolstered lower cushion adjust multiple ways for daylong comfort and support. Arm- and footrests also adjust.

Numerous directional vents keep the glass clear and interior comfortable. Pressurized cab helps keep dust out. Air conditioning is standard. For ROPS-only 850Ks, an optional under-seat heater helps warm the operator.

Fully modulated hydrostatic drive-train ensures smooth moves, virtually eliminating jerky or abrupt movements.

Ergonomically correct joystick provides intuitive, low-effort control of steering, direction, and ground speed. It's detented so it doesn't require an operator's constant touch or attention, and employs a thumb-actuated travel-speed control switch.

Use the decelerator to slow both ground speed and engine rpm. Or ground speed only to help maintain traction without affecting engine power and hydraulic response. Fully depressing the pedal applies the brakes.

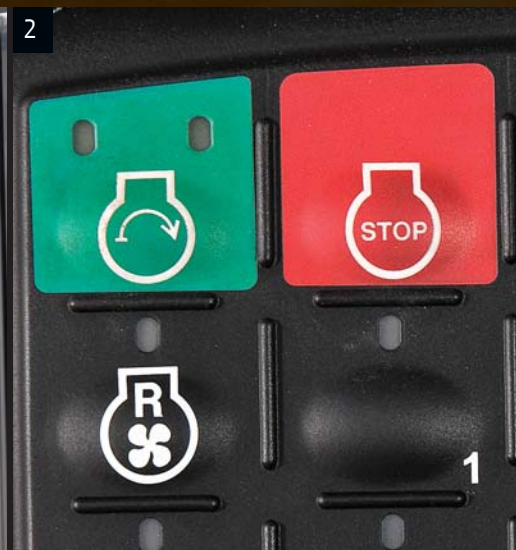
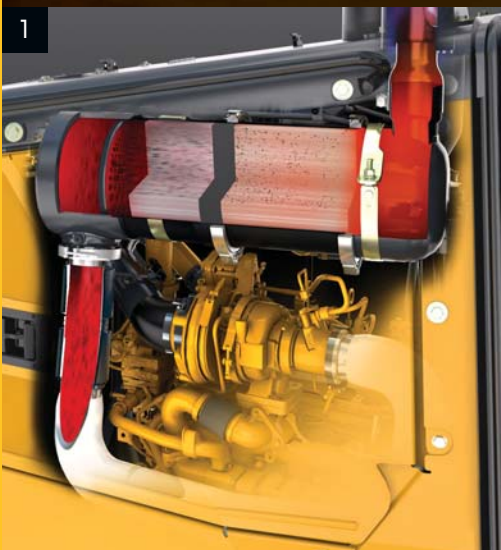
Exclusive Total Machine Control (TMC) monitor lets an operator select decelerator mode and response, forward/reverse ground-speed ranges, steering modulation, FNR shift rate, and forward/reverse speed ratios.

Nothing runs like a Deere, because nothing is built like it.

Designed and built with state-of-the-art tools and techniques by a quality-conscious workforce at our world-class facility in Dubuque, Iowa, the 850K is loaded with uptime-boosting features. Enhancements such as our unique V-Cool system and EPA IT4/EU Stage IIIB diesel engine — plus traditional John Deere features such as one-piece unitized mainframes, Dura-Trax™ undercarriage, wet-sleeve engine liners, and isolated planetary final drives give the 850K the durability you need. When you know how it's built, you'll run this Deere.

1. Our EPA IT4/EU Stage IIIB technology is simple, fuel efficient, fully integrated, and fully supported. It employs field-proven cooled exhaust gas recirculation (EGR) for reducing NOx, and a diesel particulate filter and diesel oxidation catalyst to reduce particulate matter. Periodic active and passive regeneration automatically cleans the filter without impacting machine productivity.
2. Sealed-switch module keeps out moisture and debris, and virtually never wears out.
3. V-Cool design isolates coolers from dust and engine heat for increased efficiency and durability. Positioned behind the heavy-duty grille and fan, coolers are also less vulnerable.

Like most of our construction equipment, your dozer is standard equipped with JDLink™ Ultimate, giving you 24/7 online access to your fleet's location. Track machine health, utilization, and fuel consumption — valuable information that helps you better understand costs and jobsite performance. Plus, protect machines from theft by setting up geofence and curfew alerts in your JDLink account.





Flush-fit bottom guards and tight-fitting side shields help keep trash out. Hood and side-shield perforations function as a “first filter,” further preventing entry of most debris. Anything that gets past the five-mm holes also passes through the cooler cores.

Available extended-life undercarriage delivers up to twice the bushing life, for extra durability in extremely abrasive conditions. If you want to further reduce maintenance and operating costs, choose the SC-2™ extended-life option.

Individually replaceable wet-sleeve engine-cylinder liners provide uniform engine cooling and long-term durability.

Standard reversing fan automatically back-blows the cooler cores at preset intervals. When conditions demand more frequent cleaning, simply press a button to actuate the reversing cycle.

Variable-speed on-demand fan automatically speeds up or slows down, operating only as needed to keep things cool. Helps conserve power and fuel, while reducing noise.

One-piece welded mainframe resists torsional stress, absorbs shock loads, and delivers maximum strength while allowing easy service access to major components. Heavy-duty double-reduction planetary final drives are mounted independent of the track frames, where they’re effectively protected from shock loads.

Cab-forward design provides a commanding view behind, below, and beyond the blade. Side and rear visibility is also unobstructed.

Generous hydraulic flow and precise metering ensure powerful and quick blade response, while providing the natural “feel” that enhances any operator’s grading ability.

Four position settings on PAT dozers and infinite screw-type adjustment on outside-mount dozers allow you to easily fine-tune blade pitch to maximize productivity.



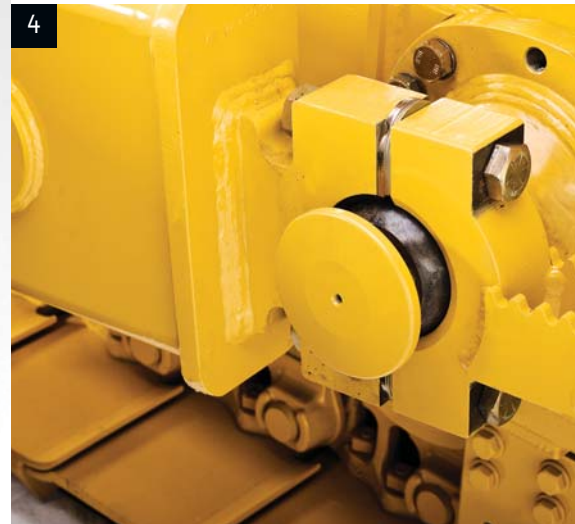
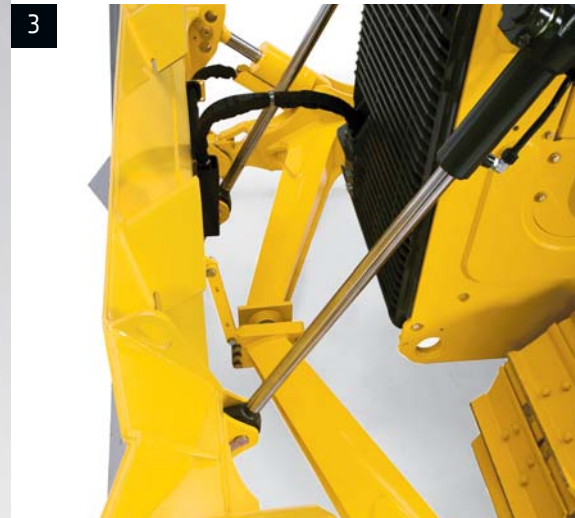
Precise grades, strong blades.

John Deere dozers enjoy solid reputations as superior grading machines. And for plenty of reasons. Unlike others that utilize the same mainframe with all dozers, the 850K's purpose-built design optimizes blade ratio and center of gravity for superior balance. So whether you opt for a power/angle/tilt (PAT) or an outside-mount straight or semi-U blade, you'll profit from uncompromised performance. Durability is also second-to-none. Advantages such as noticeably larger push beams, closed-cell blades, box-section C-frames, and steel-cable-supported Cordura®-covered hydraulic hoses provide long-term stamina and strength.



1. PAT blade's heavy-duty ball-and-socket C-frame joint resists material build-up for long-term grading precision. Blade hoses are steel-cable supported and Cordura covered for extra protection.
2. With heavy-duty high-profile push beams and a three-position pitch-adjustable semi-U blade, the outside-mount dozer delivers exceptional durability and high-production performance.

3. Heavy-duty cross-members provide solid lateral support and are shaped to allow a clear view of the bottom of the blade. What's more, their raised position allows generous clearance at the end of the push.
4. Greaseless shim-adjustable clamshell bearings in front and rear joints of the push beams ensure a tight connection for low-maintenance "like-new" grading performance.



850K's open architecture lets you employ the electronic grade-control system that's right for you, whether it's a Trimble®, Topcon, or other. Wiring harnesses, sensor mounts, control valves, and monitor bracket are factory installed, so adding a system is quick and noninvasive.



Configured, not compromised.

Yours isn't just any business. Why settle for just any crawler? With a choice of five undercarriage configurations, inside-mount PAT or outside-mount straight or semi-U blades, and numerous other options, building an 850K your way is the way we do business. This highly versatile machine can also be equipped with special-duty and severe-application packages that help it thrive on a wide variety of jobsites. And tackle tasks that other crawlers can't. Ask your dealer for details.



1. Protection packages and waste-handler configurations equip the 850K to survive, even thrive, in tough environments.
2. With its smooth hydrostatic drivetrain and impressive drawbar pull, the 850K works well with rear-mount attachments such as rippers and cable plows.
3. High-intensity halogen driving lights are standard. But if you want to extend your workday beyond daylight, opt for the 360-degree light package.

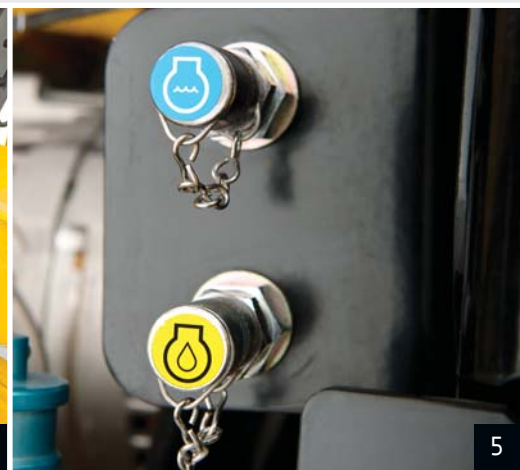
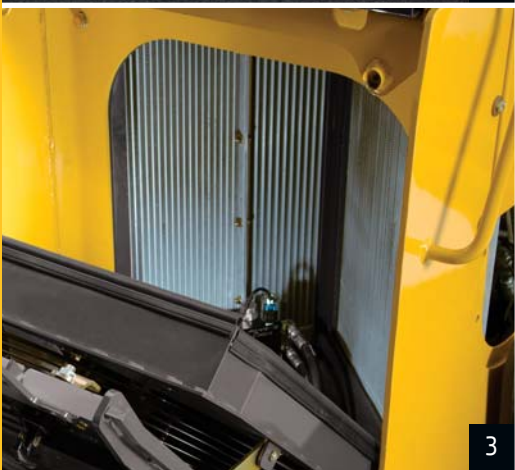


Undercarriage	STANDARD	WT	LGP	LT	WLT
Grouser Width:	610 mm (24 in.)	762 mm (30 in.)	914 mm (36 in.)	610 mm (24 in.)	914 mm (36 in.)
Dozers:	Outside Mount	Outside Mount	Outside Mount PAT	PAT	PAT

Choose the undercarriage and dozer options that are right for your work.

Designed with an open mind.

It takes only minutes to uncover the many ways the re-imagined 850K helps minimize maintenance. Side shields swing open wide to reveal convenient same-side daily service points. An exclusive tilt-out fan box allows simplified access to cooler cores for quick cleanout. Other periodic service tasks such as fluid and filter changes are also refreshingly easy. Even gaining access to drivetrain components takes only minutes. As you can see, when it comes to keeping uptime up and daily operating costs down, we're pretty open-minded.



1. Available quick fluid-evacuation system helps speed servicing. Five-hundred-hour engine oil and 2,000-hour transmission and hydraulic fluid intervals decrease downtime and expense.
2. Exhaust filter operation and status are indicated with icons and on-screen displays. The diagnostic monitor also provides easy-to-understand messages that help speed troubleshooting.
3. Innovative V-Cool design provides convenient access to both sides of the coolers for easy cleanout. Hydraulically driven fan runs only as needed, reducing fuel consumption and debris flow through the cores.
4. Operator station tilts a full 70 degrees in only minutes, for wide-open drivetrain component access.
5. Fluid-sample and diagnostic test ports simplify preventative maintenance work and troubleshooting for increased uptime.



Hinged side shields swing open wide for convenient access to dipsticks; fill tubes; batteries; master electrical shutoff; and engine, transmission, and hydraulic filters.

Heavy-duty recessed belly guards allow easy access to the engine oil pan for fast service.

Advanced diagnostic monitor provides easy-to-understand messages to help speed troubleshooting.

Sealed hydraulic and hydrostatic reservoirs are separate, eliminating any possibility of cross-contamination.

Remote lube banks provide easy access to difficult-to-reach crossbar and C-frame pivots. Convenient color-coded lube chart ensures that nothing gets overlooked.

Vertical filters allow quick, no-spill changes. Engine, hydraulics, and transmission utilize a common oil, further simplifying service.

Diesel particulate filter is easily removed through the top of the engine compartment. Minimum service interval is 5,000 hours and can be done by your John Deere dealer.

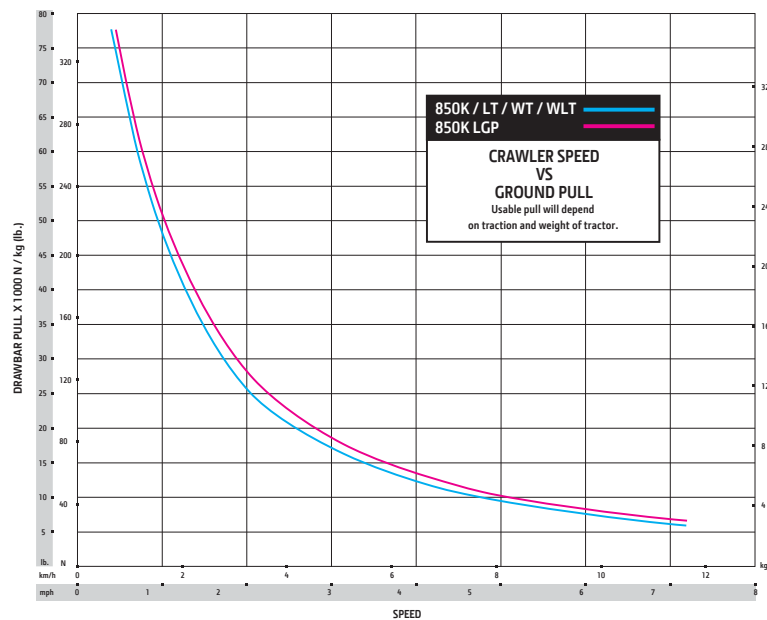
Did you hear the one about the service technician who showed up with the right part — without first having seen the machine? It's possible with Service ADVISOR™ Remote. So are system software updates via JDLink. See your dealer for details about this brave new world of remote diagnostics and repair.



850K



Engine	850K / 850K WT / 850K LGP		850K LT	850K WLT / 850K LGP
	Outside Dozer Blade		PAT Blade	
Manufacturer and Model	John Deere PowerTech™ PVX 6068		John Deere PowerTech PVX 6068	
Non-Road Emissions Standard	EPA Interim Tier 4/EU Stage IIIB		EPA Interim Tier 4/EU Stage IIIB	
Displacement	6.8 L (415 cu. in.)		6.8 L (415 cu. in.)	6.8 L (415 cu. in.)
SAE Net Rated Power at 1,800 rpm	152 kW (205 hp)		139.5 kW (187 hp)	152 kW (205 hp)
Net Peak Torque at 1,500 rpm	915 Nm (675 lb.-ft.)		829 Nm (611 lb.-ft.)	915 Nm (675 lb.-ft.)
Aspiration	Turbocharged with charge air cooler		Turbocharged with charge air cooler	
Air Cleaner	Dual-element dry tube with tangential unloader		Dual-element dry tube with tangential unloader	
Slope Operation, Maximum Angle	45 deg.		45 deg.	45 deg.
Cooling	850K / 850K WT / 850K LGP / 850K LT / 850K WLT			
Variable-speed suction				
Engine Coolant Rating	-37 deg. C (-34 deg. F)			
Engine Radiator	10 fins per in.			
Powertrain	850K / 850K WT	850K LGP	850K LT / 850K WLT	850K LGP
Transmission	Automatic, dual-path, hydrostatic drive; load-sensing feature automatically adjusts speed and power to match changing load conditions; each individually controlled track is powered by a variable-displacement piston pump and motor combination; ground-speed selection buttons on single-lever steering and direction control; independently selectable reverse speed ratios of 80%, 100%, 115%, or 130% of forward ground speed; decelerator pedal controls ground speed to stop			
System Relief Pressure	45,850 kPa (6650 psi)	45,850 kPa (6650 psi)	45,850 kPa (6650 psi)	45,850 kPa (6650 psi)
Travel Speeds				
Forward and Reverse	10.1 km/h (6.3 mph)	10.1 km/h (6.3 mph)	10.1 km/h (6.3 mph)	10.1 km/h (6.3 mph)
Maximum (optional)	10.9 km/h (6.8 mph)	10.9 km/h (6.8 mph)	10.9 km/h (6.8 mph)	10.9 km/h (6.8 mph)
Steering	Single-lever steering, speed, direction control, and counterrotation; full power turns and infinitely variable track speeds provide unlimited maneuverability and optimum control; hydrostatic steering eliminates steering clutches and brakes			
Final Drives	Double-reduction, planetary final drives transfer torque loads over 3 gear sets; mounted independently of track frames and dozer push frames for isolation from shock loads			
Total Ratio	44.7483 to 1	44.7483 to 1	44.7483 to 1	44.7483 to 1
Drawbar Pull				
Maximum	344 kN (77,300 lb.)	344 kN (77,300 lb.)	344 kN (77,300 lb.)	344 kN (77,300 lb.)
At 1.9 km/h (1.2 mph)	167 kN (37,500 lb.)	178 kN (40,000 lb.)	167 kN (37,500 lb.)	178 kN (40,000 lb.)
At 3.2 km/h (2.0 mph)	120 kN (27,000 lb.)	131 kN (29,500 lb.)	120 kN (27,000 lb.)	131 kN (29,500 lb.)

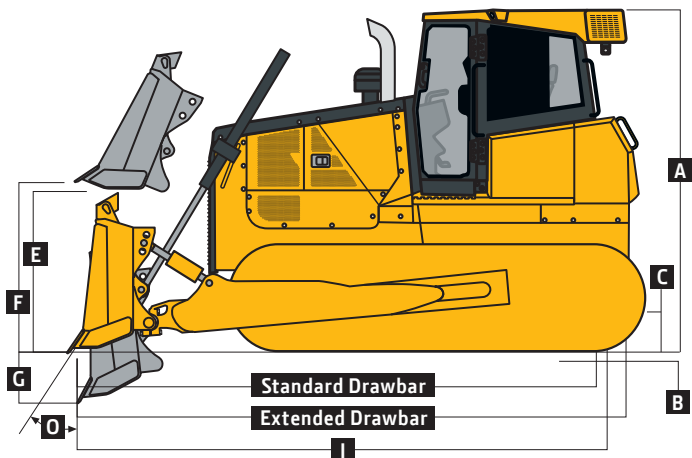


Brakes	Decelerator/brake pedal; automatic power management with manual override for matching ground speed
Service Brakes	Hydrostatic (dynamic) braking stops machine when the direction/steering control lever is moved to neutral or the decelerator is depressed to the end of travel
Type	Hydraulic
Parking Brakes	Exclusive safety feature engages wet, multiple-disc brakes whenever the engine stops, whenever the decelerator is depressed to the end of travel, or whenever the park lock lever is placed in the start or neutral positions and motion is detected; machine cannot be driven with brake applied, reducing wear-out or need for adjustment; spring-applied, hydraulic release

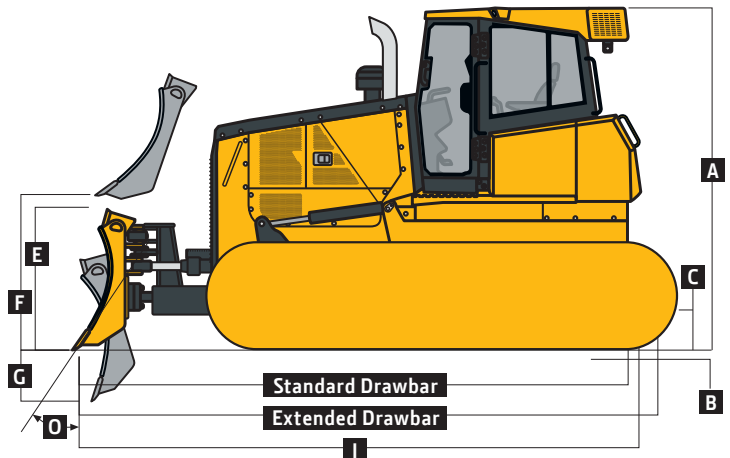


Hydraulics		850K / 850K WT / 850K LGP			850K LT / 850K WLT / 850K LGP		
		Outside Dozer Blade			PAT Blade		
Type		Load sense, piston pump			Load sense, piston pump		
Pump (74cc)		174 L/m (46 gpm)			174 L/m (46 gpm)		
System Relief Pressure		24 993 kPa (3,625 psi)			24 993 kPa (3,625 psi)		
Differential Pressure		1896 kPa (275 psi)			1896 kPa (275 psi)		
Maximum Flow at Unloaded High Idle Control		163 L/m (43 gpm)			163 L/m (43 gpm)		
		T-bar hydraulic-pilot 2-function joystick			T-bar hydraulic-pilot 2-function joystick with push-button angle function		
Electrical		850K / 850K WT / 850K LGP / 850K LT / 850K WLT					
Voltage		24 volts					
Battery Capacity		950 CCA					
Reserve Capacity		190 min.					
Alternator Rating							
Cab		130 amp					
Canopy		100 amp					
Lights		Grille mounted (2), rear mounted (2), engine compartment (1), and rear reflectors (2)					
Undercarriage		850K	850K WT	850K LGP	850K LT	850K WLT	850K LGP
Tracks		Track frame with front and rear track guides and sprocket guard; John Deere Dura-Trax™ features deep-heat-treated, sealed, and lubricated track links and through-hardened, sealed, and lubricated rollers for maximum wear resistance; sprockets are segmented; extreme-duty shoes are available (on some models) for severe applications					
Track Gauge, Standard		1880 mm (74 in.)	2032 mm (80 in.)	2184 mm (86 in.)	2083 mm (82 in.)	2235 mm (88 in.)	2388 mm (94 in.)
Grouser Width, Closed Center, Single Bar		610 mm (24 in.)	762 mm (30 in.)	914 mm (36 in.)	610 mm (24 in.)	762 mm (30 in.)	914 mm (36 in.)
Chain		Sealed and lubricated	Sealed and lubricated	Sealed and lubricated	Sealed and lubricated	Sealed and lubricated	Sealed and lubricated
Shoes, Each Side		40	40	45	45	45	45
Track Rollers, Single Flange, Each Side		7	7	8	8	8	8
Track Length On Ground		2769 mm (109 in.)	2769 mm (109 in.)	3284 mm (129 in.)	3284 mm (129 in.)	3284 mm (129 in.)	3284 mm (129 in.)
Ground Contact Area		33 755 cm ² (5,232 sq. in.)	42 193 cm ² (6,540 sq. in.)	60 064 cm ² (9,310 sq. in.)	40 039 cm ² (6,206 sq. in.)	50 052 cm ² (7,758 sq. in.)	60 064 cm ² (9,310 sq. in.)
Ground Pressure (outside dozer)		56.0 kPa (8.11 psi)	46.3 kPa (6.71 psi)	35.3 kPa (5.12 psi)	48.4 kPa (7.01 psi)	39.9 kPa (5.78 psi)	34.1 kPa (4.95 psi)
Track Pitch		203 mm (8 in.)	203 mm (8 in.)	203 mm (8 in.)	203 mm (8 in.)	203 mm (8 in.)	203 mm (8 in.)
Oscillation at Front Roller		+ 114 mm (+ 4.5 in.)	+ 114 mm (+ 4.5 in.)	+ 168 mm (+ 6.6 in.)	+ 168 mm (+ 6.6 in.)	+ 166.5 mm (+ 6.5 in.)	+ 168 mm (+ 6.6 in.)
Blades							
<i>Weights include straight end bits</i>							
PAT							
Weight		—	—	—	1251 kg (2,758 lb.)	1330 kg (2,932 lb.)	1397 kg (3,080 lb.)
Length		—	—	—	3708 mm (146 in.)	4013 mm (158 in.)	4267 mm (168 in.)
Capacity		—	—	—	3.94 m ³ (5.15 cu. yd)	4.26 m ³ (5.57 cu. yd)	4.49 m ³ (5.87 cu. yd)
Semi-U							
Weight		1643 kg (3,286 lb.)	1567 kg (3,448 lb.)	1641 kg (3,612 lb.)	—	—	—
Length		3251 mm (128 in.)	3556 mm (140 in.)	3861 mm (152 in.)	—	—	—
Capacity		5.57 m ³ (7.29 cu. yd)	5.82 m ³ (7.62 cu. yd)	5.96 m ³ (7.80 cu. yd)	—	—	—
Straight							
Weight		—	—	1291 kg (2,846 lb.)	—	—	—
Length		—	—	3912 mm (154 in.)	—	—	—
Capacity		—	—	4.09 m ³ (5.35 cu. yd)	—	—	—
Push-Beam Assembly Weight (without blade)		1820 kg (4,004 lb.)	1889 kg (4,156 lb.)	2101 kg (4,622 lb.)	—	—	—
C-Frame Assembly Weight (without blade)		—	—	—	1647 kg (3,631 lb.)	1647 kg (3,631 lb.)	1647 kg (3,631 lb.)
Operator Station		850K / 850K WT / 850K LGP / 850K LT / 850K WLT					
ROPS (ISO 3471 – 2008) and FOPS (ISO 3449 – 2005)							
Serviceability							
Refill Capacities							
Fuel Tank with Lockable Cap		356 L (94 gal.)					
Cooling System with Recovery Tank		35 L (9.2 gal.)					
Engine Oil with Filter		24.6 L (6.5 gal.)					
Transmission Reservoir with Filter		106 L (28 gal.)					
Hydraulic Reservoir and Filter		106 L (28 gal.)					

Operating Weights	850K	850K WT	850K LGP	850K LT	850K WLT	850K LGP
	Outside Dozer Blade			PAT Blade		
Base Weight (with standard equipment, rollover protective structures, full fuel tanks, and 79-kg (175-lb.) operators)	19 295 kg (42,449 lb.)	19 959 kg (43,910 lb.)	21 684 kg (47,705 lb.)	19 785 kg (43,527 lb.)	20 390 kg (44,858 lb.)	20 945 kg (46,079 lb.)
Optional Components						
560-mm (22-in.) Extreme Duty	154.9 kg (341.4 lb.)	-219 kg (-482 lb.)	—	174 kg (384 lb.)	—	—
610-mm (24-in.) Moderate Duty	In base	-373.5 kg (-823.4 lb.)	-847.2 kg (-1,867.7 lb.)	In base	—	-847.2 kg (-1,867.7 lb.)
610-mm (24-in.) Extreme Duty	306.4 kg (675.5 lb.)	-67.1 kg (-147.9 lb.)	-502.4 kg (-1,107.7 lb.)	345 kg (760 lb.)	—	-502.4 kg (-1,107.7 lb.)
760-mm (30-in.) Moderate Duty	—	In base	—	—	In base	-436 kg (-942 lb.)
760-mm (30-in.) Extreme Duty	—	387.6 kg (854.5 lb.)	—	—	436.1 kg (961 lb.)	9 kg (20 lb.)
910-mm (36-in.) Moderate Duty	—	—	In base	—	—	In base
910-mm (36-in.) Extreme Duty	—	—	523 kg (1153 lb.)	—	—	523 kg (1153 lb.)
Cab with Pressurizer and Heater/ Air Conditioner	337 kg (743 lb.)	337 kg (743 lb.)	337 kg (743 lb.)	337 kg (743 lb.)	337 kg (743 lb.)	337 kg (743 lb.)
Heater (ROPS canopy)	39 kg (85 lb.)	39 kg (85 lb.)	39 kg (85 lb.)	39 kg (85 lb.)	39 kg (85 lb.)	39 kg (85 lb.)
Full-Length Rock Guard	222 kg (490 lb.)	222 kg (490 lb.)	242 kg (534 lb.)	242 kg (534 lb.)	242 kg (534 lb.)	242 kg (534 lb.)
Final Drive Seal Guard	70 kg (155 lb.)	70 kg (155 lb.)	70 kg (155 lb.)	70 kg (155 lb.)	70 kg (155 lb.)	70 kg (155 lb.)
Retrieval Hitch	52 kg (114 lb.)	52 kg (114 lb.)	52 kg (114 lb.)	52 kg (114 lb.)	52 kg (114 lb.)	52 kg (114 lb.)
Drawbar, Extended Rigid	130 kg (286 lb.)	130 kg (286 lb.)	130 kg (286 lb.)	130 kg (286 lb.)	130 kg (286 lb.)	130 kg (286 lb.)
Heavy-Duty Grille	39 kg (86 lb.)	39 kg (86 lb.)	39 kg (86 lb.)	39 kg (86 lb.)	39 kg (86 lb.)	39 kg (86 lb.)
Front and Door Screens						
ROPS Canopy	84 kg (186 lb.)	84 kg (186 lb.)	84 kg (186 lb.)	84 kg (186 lb.)	84 kg (186 lb.)	84 kg (186 lb.)
Cab with Air Conditioner	79 kg (175 lb.)	79 kg (175 lb.)	79 kg (175 lb.)	79 kg (175 lb.)	79 kg (175 lb.)	79 kg (175 lb.)
Rear Screen						
ROPS Canopy	23 kg (50 lb.)	23 kg (50 lb.)	23 kg (50 lb.)	23 kg (50 lb.)	23 kg (50 lb.)	23 kg (50 lb.)
Cab with Air Conditioner	34 kg (75 lb.)	34 kg (75 lb.)	34 kg (75 lb.)	34 kg (75 lb.)	34 kg (75 lb.)	34 kg (75 lb.)
Side Screens						
ROPS Canopy	44 kg (98 lb.)	44 kg (98 lb.)	44 kg (98 lb.)	44 kg (98 lb.)	44 kg (98 lb.)	44 kg (98 lb.)
Cab with Air Conditioner	54 kg (120 lb.)	54 kg (120 lb.)	54 kg (120 lb.)	54 kg (120 lb.)	54 kg (120 lb.)	54 kg (120 lb.)
Condenser Guard (cab with air conditioner)	55 kg (121 lb.)	55 kg (121 lb.)	55 kg (121 lb.)	55 kg (121 lb.)	55 kg (121 lb.)	55 kg (121 lb.)
Limb Risers (ROPS canopy and cab)	272 kg (600 lb.)	272 kg (600 lb.)	272 kg (600 lb.)	272 kg (600 lb.)	272 kg (600 lb.)	272 kg (600 lb.)
Lift-Cylinder Guards	80 kg (176 lb.)	80 kg (176 lb.)	80 kg (176 lb.)	42 kg (93 lb.)	42 kg (93 lb.)	42 kg (93 lb.)
Blade Brush Guard	87 kg (192 lb.)	87 kg (192 lb.)	87 kg (192 lb.)	87 kg (192 lb.)	87 kg (192 lb.)	87 kg (192 lb.)
Tank Guard	323 kg (712 lb.)	323 kg (712 lb.)	323 kg (712 lb.)	323 kg (712 lb.)	323 kg (712 lb.)	323 kg (712 lb.)
Counterweight						
Front	397 kg (875 lb.)	397 kg (875 lb.)	397 kg (875 lb.)	397 kg (875 lb.)	397 kg (875 lb.)	397 kg (875 lb.)
Rear	449 kg (990 lb.)	449 kg (990 lb.)	449 kg (990 lb.)	449 kg (990 lb.)	449 kg (990 lb.)	449 kg (990 lb.)
Machine Dimensions	850K / 850K WT / 850K LGP			850K LT / 850K WLT / 850K LGP		
Blade Type	Outside Dozer Blade			PAT Blade		
A Overall Height to Roof	3182 mm (10 ft. 5 in.)			3182 mm (10 ft. 5 in.)		
B Tread Depth with Single-Bar Grouser						
Moderate Duty	66 mm (2.6 in.)			66 mm (2.6 in.)		
Extreme Duty	71 mm (2.8 in.)			71 mm (2.8 in.)		
C Ground Clearance with Grousers (excludes grouser height)	409 mm (16.1 in.)			409 mm (16.1 in.)		

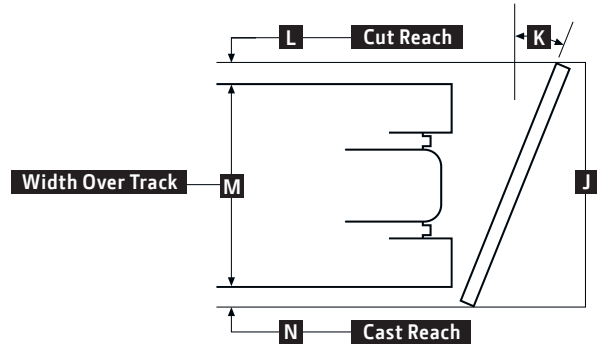
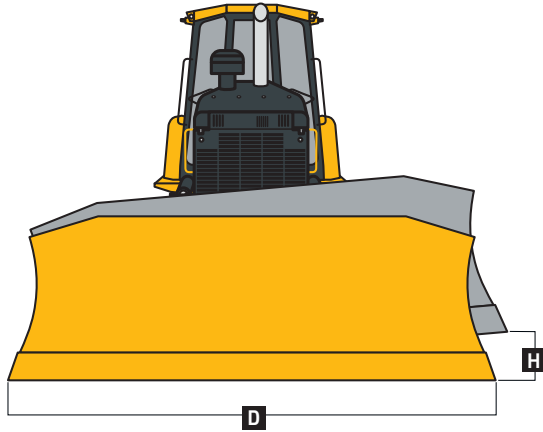


850K / 850K WT / 850K LGP WITH OUTSIDE DOZER BLADE



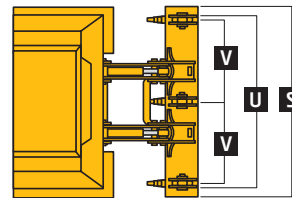
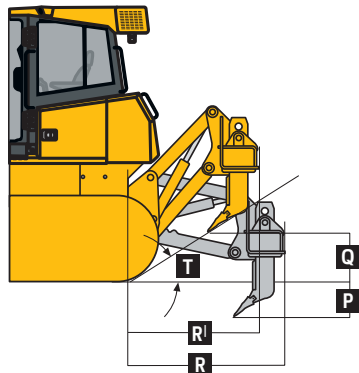
850K LT / 850K WLT / 850K LGP WITH PAT BLADE

Machine Dimensions (continued)	850K	850K WT	850K LGP	850K LT	850K WLT	850K LGP
Blade Type	Outside Dozer Blade			PAT Blade		
D Blade Width	3251 mm (10 ft. 8 in.)	3556 mm (11 ft. 8 in.)	3861 mm (12 ft. 8 in.)	3708 mm (12 ft. 2 in.)	4013 mm (13 ft. 2 in.)	4267 mm (14 ft. 0 in.)
E Blade Height	1422 mm (4 ft. 8 in.)	1374 mm (4 ft. 6 in.)	1321 mm (4 ft. 4 in.)	1229 mm (4 ft. 0 in.)	1229 mm (4 ft. 0 in.)	1229 mm (4 ft. 0 in.)
F Blade Lift Height	1151 mm (3 ft. 9 in.)	1151 mm (3 ft. 9 in.)	1151 mm (3 ft. 9 in.)	1072 mm (3 ft. 6 in.)	1072 mm (3 ft. 6 in.)	1072 mm (3 ft. 6 in.)
G Blade Digging Depth	599 mm (24 in.)	599 mm (24 in.)	599 mm (24 in.)	704 mm (28 in.)	704 mm (28 in.)	704 mm (28 in.)
H Blade Tilt (uses tilt jack)	753 mm (30 in.)	753 mm (30 in.)	853 mm (34 in.)	508 mm (20 in.)	533 mm (21 in.)	572 mm (23 in.)
I Overall Length with Blade	5384 mm (17 ft. 8 in.)	5384 mm (17 ft. 8 in.)	5940 mm (19 ft. 6 in.)	5740 mm (18 ft. 10 in.)	5740 mm (18 ft. 10 in.)	5740 mm (18 ft. 10 in.)



J Overall Width with Blade Angled	—	—	—	3391 mm (11 ft. 2 in.)	3658 mm (12 ft. 0 in.)	3901 mm (12 ft. 10 in.)
K Blade Angle	—	—	—	23.8 deg.	23.8 deg.	23.8 deg.
L Cut Reach	—	—	—	158 mm (6.2 in.)	145 mm (5.7 in.)	109 mm (4.3 in.)
M Width Over Track	2489 mm (8 ft. 2 in.)	2794 mm (9 ft. 2 in.)	3099 mm (10 ft. 2 in.)	2693 mm (8 ft. 10 in.)	2997 mm (9 ft. 10 in.)	3302 mm (10 ft. 10 in.)
N Cast Reach	—	—	—	284 mm (11.2 in.)	272 mm (10.7 in.)	234 mm (9.2 in.)
O Cutting-Edge Angle	51.5 to 61.0 deg.	51.5 to 61.0 deg.	51.5 to 61.0 deg.	55.1 to 60.2 deg.	55.1 to 60.2 deg.	55.1 to 60.2 deg.

Rear Ripper		850K / 850K WT / 850K LGP / 850K LT / 850K WLT				
Parallelogram ripper with ESCO ripper tips, multi-shank (3)						
Weight	2032.1 kg (4,480 lb.)					
P Maximum Penetration	723.9 mm (28.5 in.)					
Q Maximum Clearance Under Tip	610 mm (24 in.)					
R Overall Length, Lowered Position	1626 mm (5 ft. 4 in.)					
R^l Overall Length, Raised Position	1525 mm (5 ft. 0 in.)					
S Overall Beam Width	2400 mm (7 ft. 10 in.)					
T Slope Angle (full raise)	24 deg.					
U Ripping Width	2146 mm (7 ft. 1 in.)					
V Distance Between Shanks	1041 mm (3 ft. 5 in.)					



Additional equipment

Key: ● Standard ▲ Optional or special

See your John Deere dealer for further information.

850K Engine	
●	Meets EPA Interim Tier 4/EU Stage IIIB emissions
●	Electronic control with automatic engine protection
●	Dual-element dry-tube air cleaner with tangential unloader valve
●	Muffler, self draining, under hood, with vertical stack
●	Environmental service drains
●	Engine glow plug starting system
▲	Engine block heater
▲	Chrome exhaust
▲	Severe-duty 400mL fuel filter and water separator
▲	Rotary ejector engine air precleaner
Cooling	
●	Tilt-out cooling fan, suction type, programmable reversing
●	Engine coolant radiator (10 fins per in.)
●	Hydrostatic cooler (oil/air – 10.2 fins per in.)
●	Hydraulic cooler (oil/air – 10.2 fins per in.)
●	Enclosed safety fan guard (conforms to SAE J1308 and ISO3457)
●	Perforated engine and hood side shields
●	Tilt-out bar-type grille
▲	Extreme-duty grille
Transmission	
●	Diagnostic test ports
●	Environmental service drains
▲	Final-drive seal guards

850K Hydraulic System	
●	2-function hydraulics
▲	3-function hydraulics
▲	4-function hydraulics with rear plumbing
▲	High-flow hydraulic pump and hydraulic cooler for use with winch
▲	Integrated Grade Control (IGC) hydraulics
Mainframe, Access Panels	
●	Tilt operator station service access
●	Front tow loop (bolt-on)
●	Integral bottom protection
●	Hinged bottom access covers (bolt-on)
●	Vandal protection: Engine access door / Side tank access doors / Fuel tank / Instrument panel / Transmission reservoir / Hydraulic reservoir
●	Maintenance-free center crossbar pivot
Attachments	
▲	Landfill package
▲	Retrieval hitch with pin
▲	Extended rigid drawbar with pin for pull-type implements
▲	Counterweight, rear, 454 kg (1,000 lb.)
▲	Ripper, rear, 3 shank
▲	Winch, hydrostatically driven*
▲	Operator-protection package
▲	Forestry-protection package
Undercarriage	
●	Oscillating undercarriage with remote lube
●	Full-length, smooth-surface track frame covers
●	Guides, front and rear, with bolt-on wear strips
●	Segmented sprockets
●	Double-flange rollers
▲	Extended life undercarriage SC-2™ bushings
▲	Full-length rock guards
▲	Recessed sprockets

Canopy	Cab	Operator's Station / Electrical
●	●	Retractable seat belts, 76 mm (3 in.) (conform to SAE J386)
●	●	Convex interior rearview mirror, 102-mm (4-in.) tall, 203-mm (8-in.) wide (conforms to SAE J985)
●	●	12-volt power port
▲	▲	Second console-mounted power port, 12 volts
●	●	Lockable dash-mounted storage compartment
	●	Air conditioner, 24,000 Btu
	●	Tinted glass
	●	Dome light
	●	Heater (roof mount)
●		Air-ride vinyl seat
	●	Air-ride fabric seat
▲	▲	Heated air-ride fabric seat
	▲	Under-seat heater
	●	Wipers (intermittent plus 2 speeds) and washers – front and rear windows, and left and right doors
	●	AM/FM, weather-band radio, clock, and MP3 player front plug-in
	●	Radio-area storage slot with power port
	▲	External-mounted attachment mirror
●	●	Sealed alternator, cab 130 amps, canopy 100 amps
●	●	Master electrical disconnect switch
●	●	Lights, grille mounted (2), rear mounted (1)
▲	▲	Work lights (4), roof mounted
●	●	JDLINK™ Ultimate wireless communication system (available in specific countries; see your dealer for details)
▲	▲	Fluid-sample valves
▲	▲	Fast-fuel system
▲	▲	Quick-service ports
▲	▲	Rear attachments mirror
▲	▲	Rear storage compartment

Net engine power is with standard equipment including air cleaner, exhaust system, alternator, and cooling fan at test conditions per ISO9249. No derating is required up to 3050-m (10,000 ft.) altitude. Also available: winches, fair-leads, log arches, skidding grapples, trash packages, landfill protection packages, cable plows, side booms, field-installed cab for canopy, canopy heater, and fire-suppression systems. Specifications and design subject to change without notice. Wherever applicable, specifications are in accordance with SAE standards. Except where otherwise noted, these specifications are based on a unit with rollover protective structure, full fuel tank, 79-kg (175 lb.) operator, and standard equipment. Operator station ROPS and FOPS certified.

