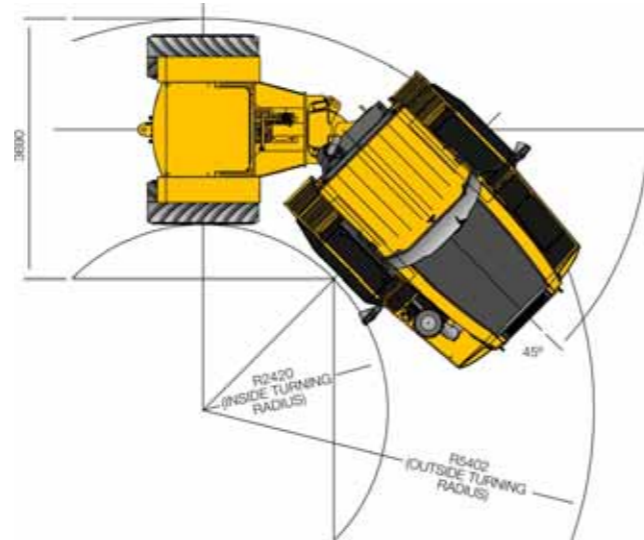
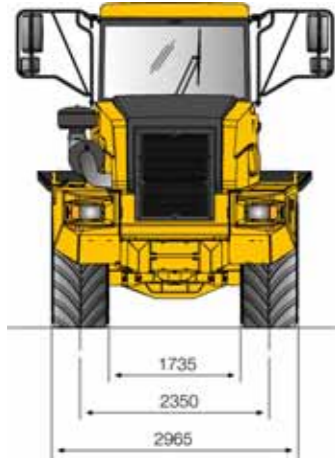
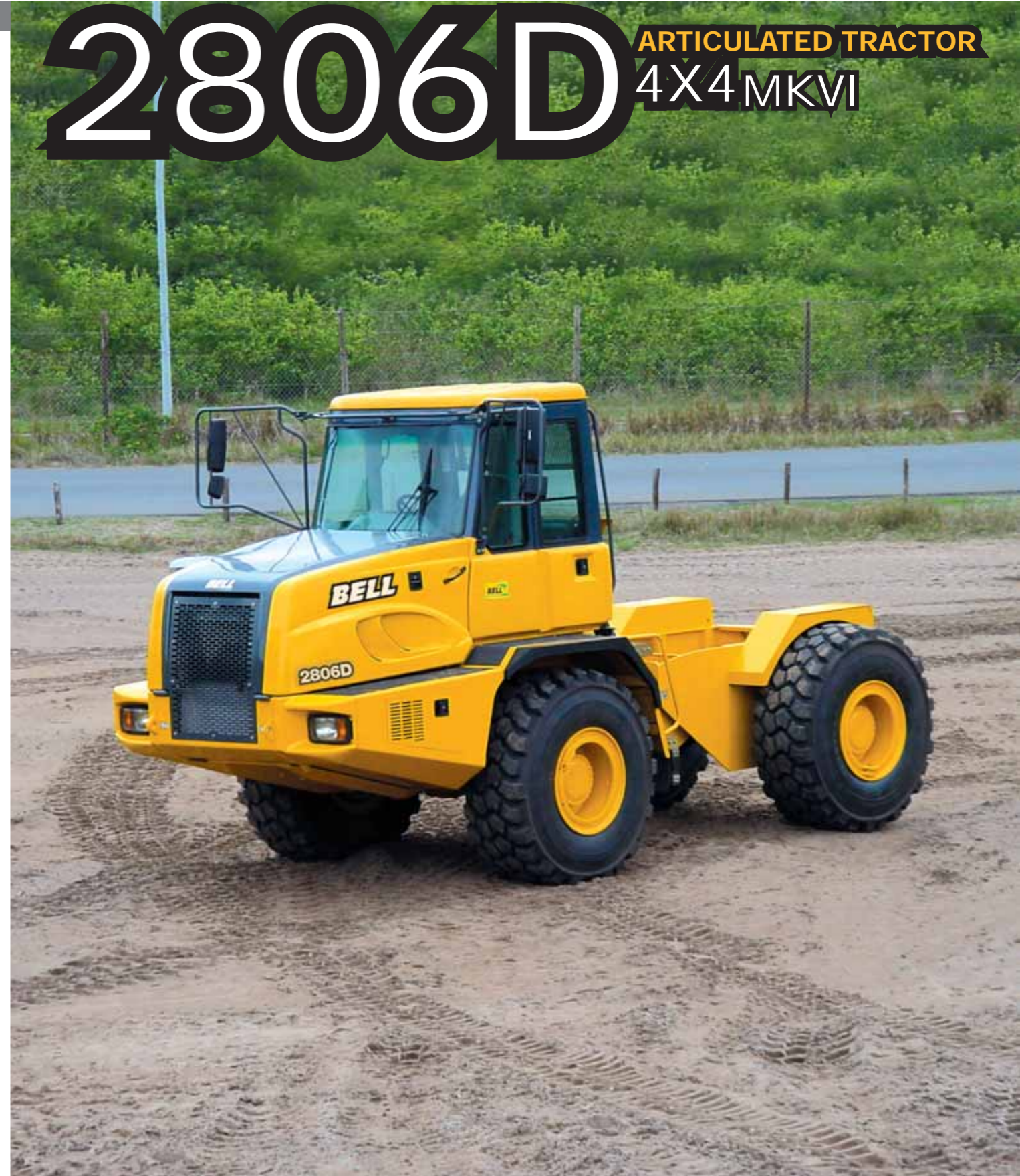


# 2806D ARTICULATED TRACTOR 4X4 MKVI



# 2806D ARTICULATED TRACTOR 4X4 MKVI



## Features of Articulated Tractors...

- **VALUE:** Bell tractors are not farm tractor derivatives. They are built from the ground up for trouble free operation and maximum durability in full-time heavy duty construction work.
- **PRODUCTIVE:** Powerful built-for hauling ADT drivetrains are well matched for pulling and retarding heavy loads. Nitrogen over oil strut suspension smooths the ride for operator and machine.
- **ECONOMY:** Modern fuel efficient engine, lockup torque converter and planetary transmission deliver more work per unit of fuel used
- **EASY TO OPERATE:** High quality cab is conducive to operator care. Simple to use controls and electronic interfaces protect the machine from accidental misuse.

BELL SOUTH AFRICA : Tel: +27 (0)11-928 9700 • Fax: +27 (0)11-928 9702  
 BELL INTERNATIONAL : Tel: +27 (0)35-907 9431 • Fax: +27 (0)35-797 4336  
 E-mail: sales@bellequipment.com • www.bellequipment.com

All dimensions are shown in millimetres, unless otherwise stated between brackets.  
 Under our policy of continuous improvement, we reserve the right to change specifications and design without prior notice. Photographs featured in this brochure may include optional equipment.

**Strong Reliable Machines**  
**Strong Reliable Support** **BELL**

SPEC/764/05/09 - 2806D Articulated Tractor (Rev1)

- Gross Power : 205 kW (275 hp)
- Gross Torque : 1 000 Nm (736 lbft)
- Gross Weight : 12 120 kg (26,712 lbs)

# BELL

# 2806D ARTICULATED TRACTOR 4X4 MKVI

**ENGINE**  
Configuration Mercedes Benz OM906LA  
Aspiration I-6 with exhaust brake and Engine Valve Brake (EVB)  
Cooling System Turbocharged and intercooled  
Liquid cooled with single pass radiator as well as charge air cooler  
Gross power 205 kW (275 hp) @ 2 200 rpm SAE J1349  
Net Power 198 kW (266 hp) @ 2 200 rpm  
Gross torque 1 000 Nm (736 lbft) @ 1 050 - 1 850 rpm SAE J1349  
Net Torque 970 Nm (714 lbft) @ 1 050 - 1 850 rpm  
Displacement 6,37 litres (389 cu.in)  
Fuel tank capacity 340 litres (90 US gal)

**TRANSMISSION**  
Layout ZF 6HP592C with integral retarder  
Gear layout Engine mounted box with rear output  
Constant meshing planetary gears, clutch operated  
Gears 6 Forward, 1 Reverse  
Clutch type Hydraulically operated multi-disc  
Control type Electronic  
Torque converter layout Hydrodynamic, with lock-up in all gears  
Vehicle speeds  
1st 2nd 3rd 4th 5th 6th R  
5.7 9.4 16.0 22.6 32.4 38.7 6.6 km/h  
3.5 5.8 9.9 14 20.1 24 4.1 mph

**TRANSFER CASE**  
Output differential VGR 13 100  
Three in-line helical gears. Interaxle 33/67 proportional differential, pneumatically lockable whilst stationary or on the move.

**AXLES**  
Differential type Bell 15T  
Spiral bevel type with Limited Slip  
Final drive type Outboard heavy duty planetary  
Housing type Steel fabricated

**BRAKING SYSTEM**  
SERVICE BRAKE Dual circuit, full hydraulic actuation caliper brakes on all wheels  
Maximum brake force 164 kN (36,900 lbf)  
PARK & EMERGENCY Spring applied, air released driveline-mounted disc.  
Maximum brake force 396 kN (89,000 lbf)  
AUXILIARY BRAKE Automatic exhaust brake and Engine Valve Brake (EVB)

**WHEELS**  
Standard Tyre Size 23,5R25  
Type 2"  
Optional Tyre Size Dual 15X34  
Type Traction

**SUSPENSION**  
Front type Semi-independent leading arm type linkages supported by nitrogen/oil struts  
Rear type Rigidly mounted

**HYDRAULIC SYSTEM**  
Full load sensing system serving the prioritized steering, body tipping and brake functions. A ground-driven, load sensing emergency steering pump is integrated into the main system  
Variable displacement, loadsensing piston  
Steering, hydraulic brake charging  
Pump Type Application Flow: 84 l/min (48.6 US gal/min)  
Pressure: 27 MPa (3,625 psi)  
Filter: 10 micron

**PNEUMATIC SYSTEM**  
Air drier with heater and integral unloader valve, serving park brake and auxiliary functions  
System pressure 810 kPa (117 psi)

**ELECTRICAL SYSTEM**  
Voltage 24 V  
Battery type Two maintenance free permanently sealed  
Battery capacity 2 x 105 Ah (optional 2 extra batteries)  
Alternator rating 28 V 80 A

**STEERING SYSTEM**  
Hydrostatically actuated by two double acting cylinders, with ground-driven emergency steering pump.  
Angle +/- 45 degrees  
Lock to lock turns 4,1

**OPERATING WEIGHTS**  
Empty: Front 8 830 kg (19,461 lbs)  
Rear 3 290 kg (7,251 lbs)  
Total 12 120 kg (26,712 lbs)  
Gross Combined Mass 56 000 kg (123,459 lbs)

**STANDARD EQUIPMENT**  
Cab  
ROPS/FOPS certification  
• Protective rear window guard • Tilt cab for service access • Gas strut supported door • Tinted safety glass • Sliding windows  
• Rear view mirrors - regular and wide angle  
• Sun visor • Wiper/washer with intermittent control • Tilt and telescoping steering wheel  
• Adjustable, air suspension seat with retractable seat belt • Fold-away trainer seat with retractable seat belt • HVAC climate control system with filtered and ducted air  
• Rotating beacon • 12 V power outlet/12 V cigarette lighter • Ash tray • Drinks holder  
• Cooled/heated lunch box • I-Tip programmable bin tip • Sound insulated to 76 dB(A) to ISO 6396 • Radio/CD/Tape  
• Memory Module • Air horn

**MDU Features**  
• Operator / Site selected speed control  
• Tipping counter • Trip timer • Trip distance  
• Transmission gear selection • Fuel Consumption • Diagnostics • Intermittent wiper timing control • Speedo calibration for alternative tyre sizes • Metric /Imperial unit selection • Warning lights with audible buzzer

**Gauges**  
• Engine coolant temperature • Engine oil pressure • Transmission oil temperature  
• Fuel • Tachometer • Battery voltage  
• Hourmeter • Odometer • System air pressure

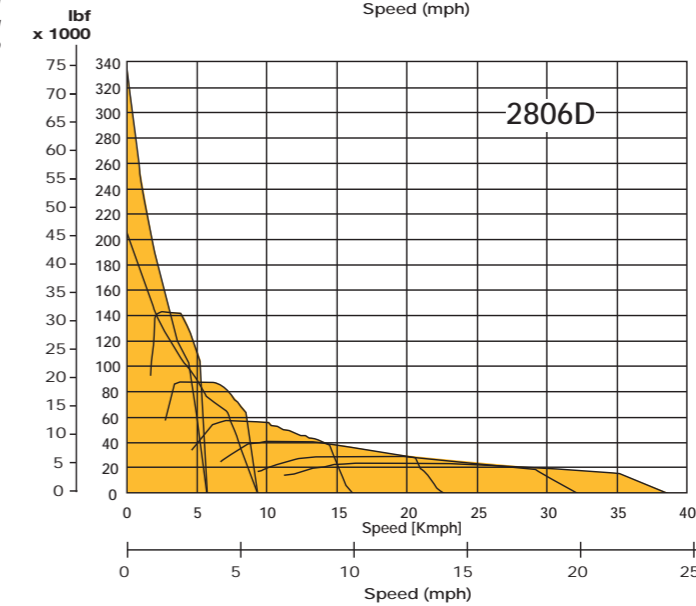
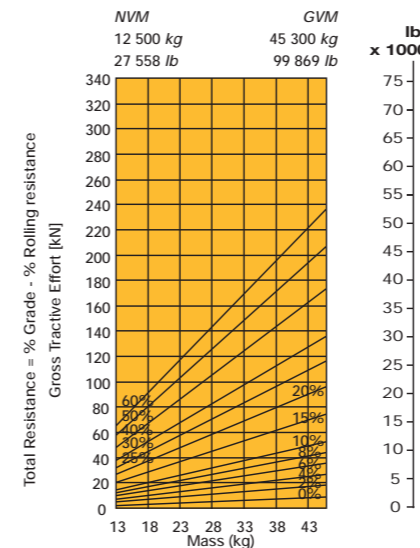
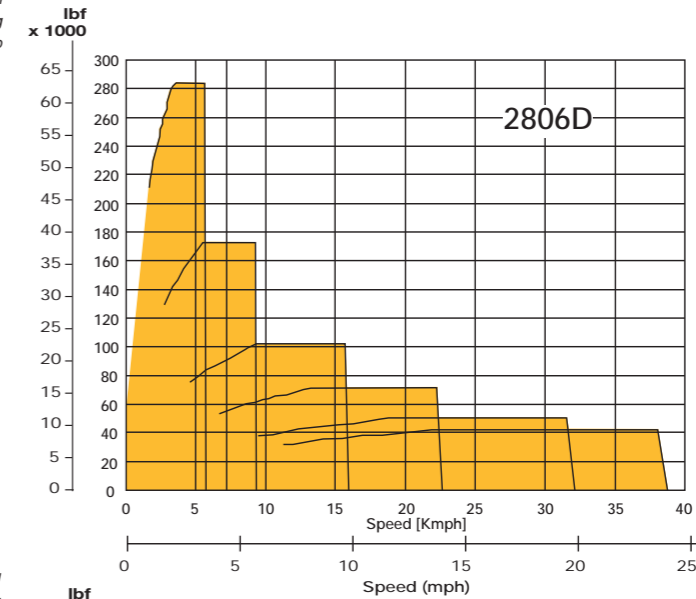
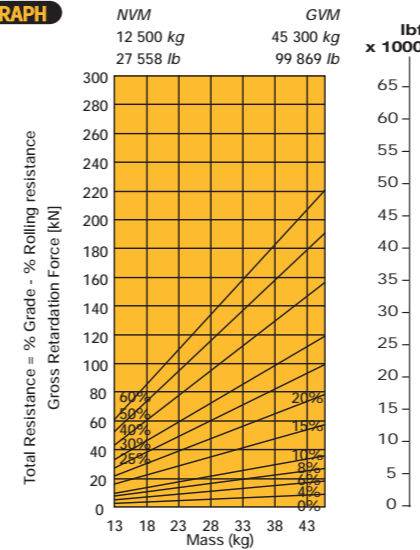
**Retarder** Integral transmission retarder

**Other** Ground driven emergency steering

**OPTIONAL EQUIPMENT** (Factory or field installed)  
• Electrically adjustable rearview mirrors - one per side  
• Retractable sun visor  
• Fleetmatic Satellite Monitoring System  
• Forward working lights  
• Artic reverse light  
• Fuel heater  
• External windshield visor  
• Headlight protection grills  
• Rear window wiper  
• Antenna mounting bracket  
• System for reverse camera  
• Tyre pressure monitoring

# 2806D ARTICULATED TRACTOR 4X4 MKVI

## DRAWBAR PULL GRAPH



## LINE DRAWING

